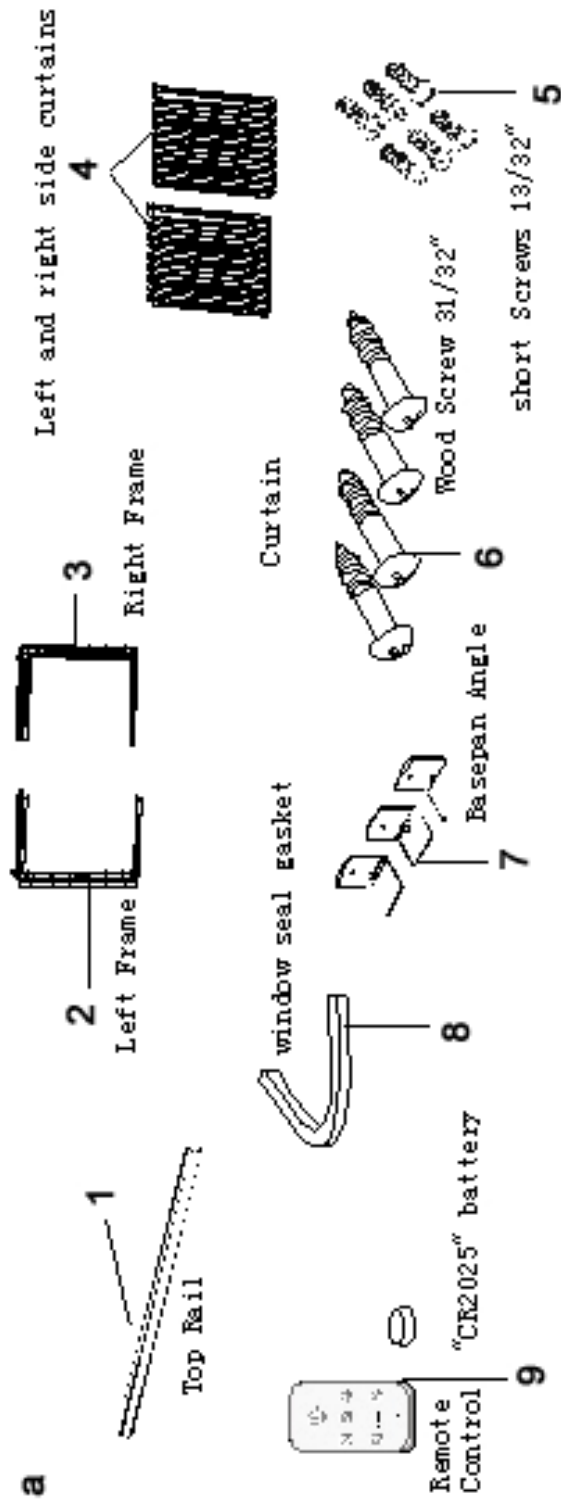


HEAT CONTROLLER, INC.

REPLACEMENT
PARTS

RADS-81A
Room Air Conditioner

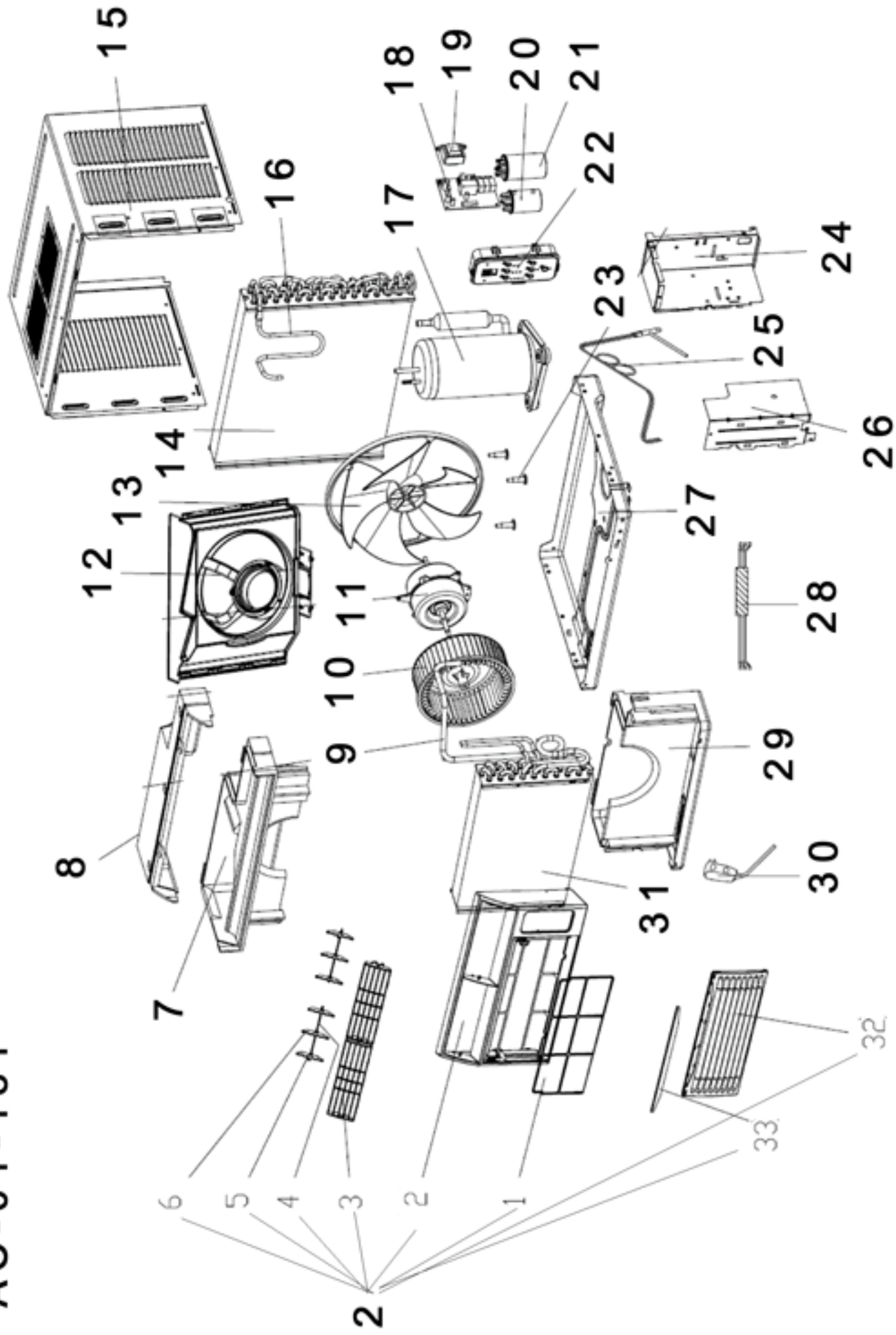
AC-01-181a



RADS-81A

FIGURE NO.	PART NO.	NAME	DESCRIPTION
2	AC-2950-65	FRAME	LEFT
3	AC-2950-66	FRAME	RIGHT
4	AC-6100-59	SCREEN	ACCORDIAN
5	AC-6150-62	SCREW	SHORT 13/32"
6	AC-6150-15	SCREW	25mm WOOD
7	AC-0840-12	BRACE	ANGLE
8	AC-3100-44	GASKET	
9	AC-5620-30	REMOTE	

AC-01-181



RADS-81A

FIGURE NO.	PART NO.	NAME	DESCRIPTION
2	AC-5200-364	PANEL	
7	AC-1480-32	CASING	MIDDLE
8	AC-1480-31	CASING	TOP
9	AC-7750-150	TUBE	SUCTION
10	AC-2750-01	FAN	BLOWER WHEEL
11	AC-4550-231	MOTOR	FAN
12	AC-0668-120	BOARD	REAR PARTITION ASSY
13	AC-2750-104	FAN	AXIAL
14	AC-1800-113	CONDENSER	ASSY
15	AC-1300-47	CABINET	
16	AC-7750-149	TUBE	DISCHARING
17	AC-1750-09	COMPRESSOR	
18	AC-5210-85	P.C.B.	
19	AC-7550-24	TRANSFORMER	
20	AC-1400-37	CAPACITOR	COMPRESSOR
21	AC-1400-03	CAPACITOR	COMPRESSOR (35uf/250v)
22	AC-2175-01	DIAL	
23	AC-0750-02	BOLT	COMPRESSOR
24	AC-0800-117	BOX	CONTROL
25	AC-7750-152	TUBE	CAPILLARY ASSY
26	AC-5300-302	PLATE	SIDE
27	AC-5300-307	PLATE	BOTTOM
28	AC-3363-15	HARNESS	WIRE
29	AC-1480-33	CASING	BOTTOM
30	AC-1900-37	CORD	POWER
31	AC-2650-104	EVAPORATOR	ASSY
1	AC-3300-14	GUIDE	

**Design, material, performance data and components
subject to change without notice.**

HEAT CONTROLLER, INC.

1900 Wellworth Ave., Jackson, Michigan 49203 • Ph. 517-787-2100 • Fax 517-787-9341

THE QUALITY LEADER IN CONDITIONING AIR

www.heatcontroller.com