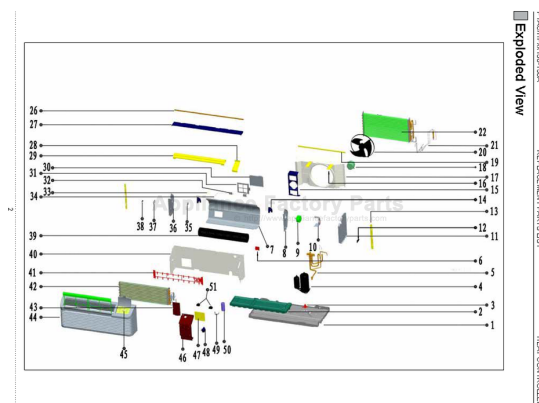


This Owner's Manual is provided and hosted by Appliance Factory Parts.



COMFORT-AIRE PTHP15A230A Owner's Manual

[Shop genuine replacement parts for COMFORT-AIRE
PTHP15A230A](#)



[Find Your COMFORT-AIRE HVAC Parts - Select From 1486 Models](#)

----- Manual continues below -----

HEAT CONTROLLER

REPLACEMENT PARTS LIST

Packaged Terminal Air Conditioners & Heat Pumps

7,000-15,000 BTUH

Cooling with Electric Heat

PTAC07A230A

PTAC09A230A

PTAC12A230A

PTAC12A250A

PTAC15A250A

PTAC15A230A

Heat Pump with Electric Heat

PTHP07A230A

PTHP09A230A

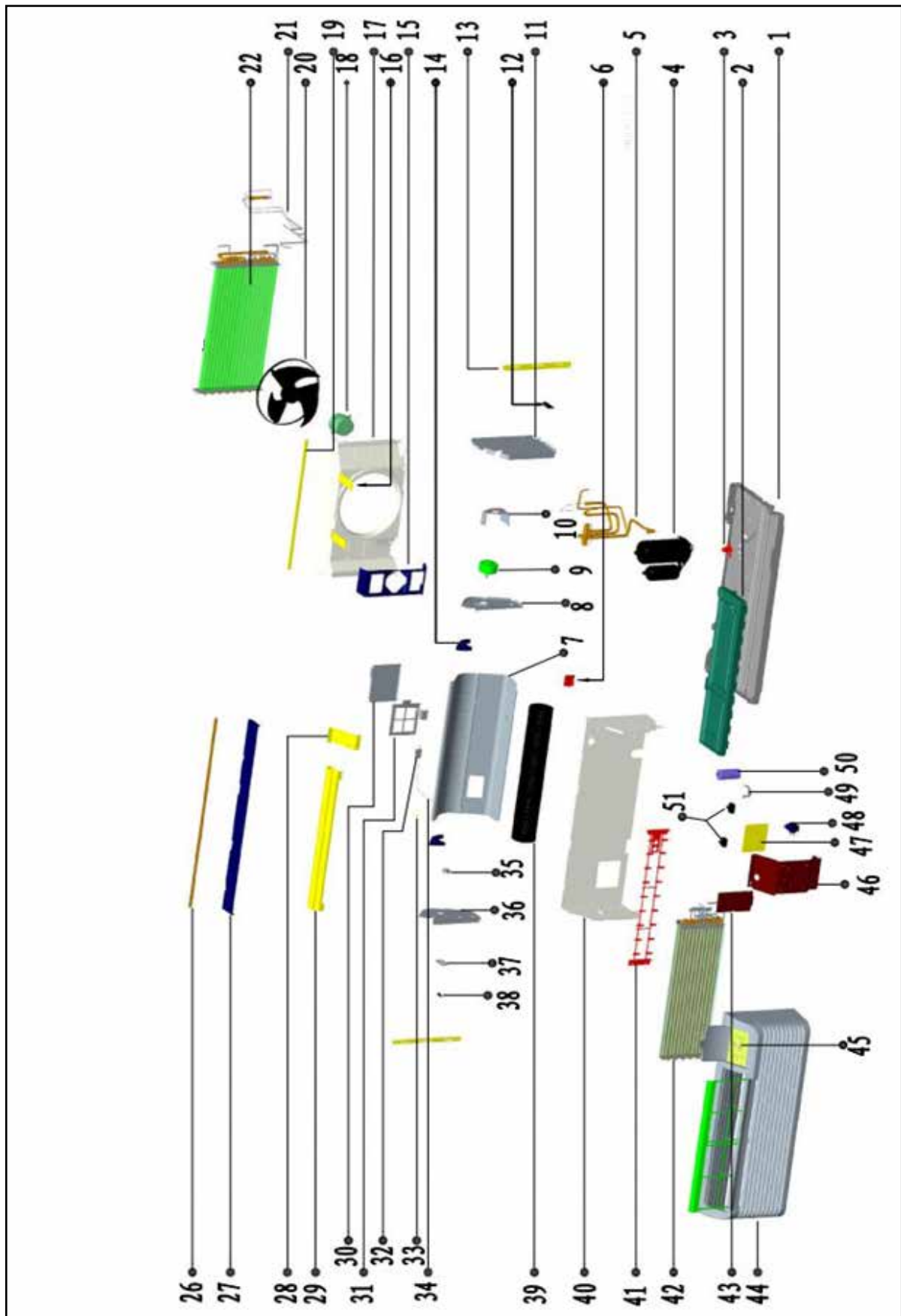
PTHP12A230A

PTHP12A250A

PTHP15A250A

PTHP15A230A

Exploded View



Generic Parts List

Location	Description	Part No.	Qty.
1	Base pan components assy	801220890133	1
2	Foam sub base	802220890006	1
3	Water disposal valve	801619900533	1
4	Compressor	801401400081	1
5	4-way valve ass'y	801620590206	1
5.1	4-way valve	801600100035	1
5.2	4-way valve coil	802401600614	1
6	Wiring press plate	801120890008	1
7	Air discharge duct	801220890153	1
8	Right side board assy of air duct	801220890157	1
9	Indoor single-axle motor	802400300024	1
10	Indoor motor support	801220890158	1
11	E-box left side board assy	801220890159	1
12	Groove clamp	801120890015	1
13	Left and right fixing clamp components	801220890167/801220890170	1
14	Left and right parts of air duct	801120890013/801120890014	1
15	Outdoor motor support	801220890144	1
16	Connection plate	801220890166	2
17	Wind inlet guide	801120890019	1
18	Outdoor single-axle motor	802400400487	1
19	Wind inlet guide plate	801220890190	1
20	Propeller fan/outdoor axial fan blade	801120890009	1
21	One-way valve ass'y	801620590208	1
21.1	One-way valve	801600300055	1
22	Condenser coil	801520890038	1
26	Front panel bracket strip	801220890164	1
27	Top cover fasten strip	801220890179	1
28	Seal board 2	801220890177	1
29	Air outlet	801220890172	1
30	Fresh air inlet cover	801220890150	1
31	Fresh air inlet filter	801120890010	1
32	Fresh air inlet support	801220890151	2
33	Fresh air inlet groove clamp	801120890017	1
34	Fresh air inlet spring and tube	802920890004/801120890028	1
35	Fixing board of bearing holder	802720890002/801220890156	1
36	Left side board assy of air duct	801220890155	1
37	Fresh air inlet rail	801120890012	1
38	Fresh air inlet lever	801120890011	1
39	Cross-flow fan/blower wheel	802920890005	1
40	Center plate assy	801220890148	1
41	Electric heater	802402000102	1
42	Evaporator coil	801520590052	1
	Thermostat connecting adapter	802420890009	1
	Harness between board and thermostat terminal strip	802420890033	1

Generic Parts List

Location	Description	Part No.	Qty.
43	Sealing board assy	801220890175	1
44	Front panel cover assy	801120890020	1
44	HC Customized front panel cover(Comfort-aire/Century)	801120890020	1
44.1	Front panel cover	801120890021	1
44.2	Front panel bracket clamp	801220890192	2
44.3	Cover filter	801120890022	2
44.4	Control board direction grid	801120890023	1
44.5	Air outlet grid	801120890024	1
44.6	Control panel ass'y	801120890025	1
44.6	HC Customized Century control panel ass'y	80112089A025	1
45	Display board assy	803320890024	1
	Display board	803300400018	
45.1	Electrical box	801120890026	1
45.2	Control pad	802020890070	1
45.2	HC Customized Control pad	8020208A0156	1
46	Electrical box flip	801220890162	1
47	PCB/Main board	803300300892	1
	PCB/Main board-For units built after 5/15/13 that do have "N" connection for electric heat on pc board, use	803300300905	1
48	Transformer	802300200068	1
49	Capacitor clamp	801200100002	1
50	Compressor capacitor	802420490001	1
51	Indoor motor capacitor	802419900166	1
51	Outdoor motor capacitor	802401100039	1
52	Air outlet protection grid	802920890003	1
54	Indoor temp. sensor	802300400077	1
55	Outdoor temp. sensor	802300400129	1
56	Connection plate	801220890139	1
57	Air return temp. sensor	802300400128	1
58	20amp LCDI power cord	802420690004	1
59	Compressor connecting wire	802421290011	1
60	Refridgerant	800500100004	0.78KG

Remote control does not come with the unit, must be purchased separately.

Accessory

Location	Description	Part No.	Qty.
53	Remote control assy (remote control, 2 batteries)	7602-512	1

Parts List

Description	Part No.
Compressor for 7K btu model	80140160007
Compressor for 9K btu model	80140160006
Compressor for 12K btu model	80140160005
Compressor for 15K btu model	80140160004
4-way reversing valve	801600100034
Indoor single-axle motor for 7K model	802400400492
Indoor single-axle motor for 9K model	802400400495
Indoor single-axle motor for 12K model	802400400493
Indoor single-axle motor for 15K model	802400400503
Outdoor single-axle motor	802400400494
Propeller fan	801120890009
Fresh air inlet filter	801120890010
Panel cover	801120890025
Control mask	802020890070
Control board	803300400018
Transformer	802300200040
Compressor capacitor for 7k btu model	802401000023
Compressor capacitor for 9k btu model	802401000039
Compressor capacitor for 12k btu model	802420490001
Compressor capacitor for 15k btu model	802401000039
Indoor temp. sensor	802300400077
Outdoor temp. sensor	802300400129

Notice: Blue marking means different key components as model cooling capacity difference

Yellow marking means HC customized parts

Exploded view shows all most complete common components of 1 PTAC chassis in detail

Due to ongoing product improvements, specifications and dimensions are subject to change and correction without notice or incurring obligations. Determining the application and suitability for use of any product is the responsibility of the installer. Additionally, the installer is responsible for verifying dimensional data on the actual product prior to beginning any installation preparations.

Incentive and rebate programs have precise requirements as to product performance and certification. All products meet applicable regulations in effect on date of manufacture; however, certifications are not necessarily granted for the life of a product. Therefore, it is the responsibility of the applicant to determine whether a specific model qualifies for these incentive/rebate programs.

HEAT CONTROLLER

1900 Wellworth Ave., Jackson MI 49203 • Ph. 517-787-2100 • www.heatcontroller.com

A  Company