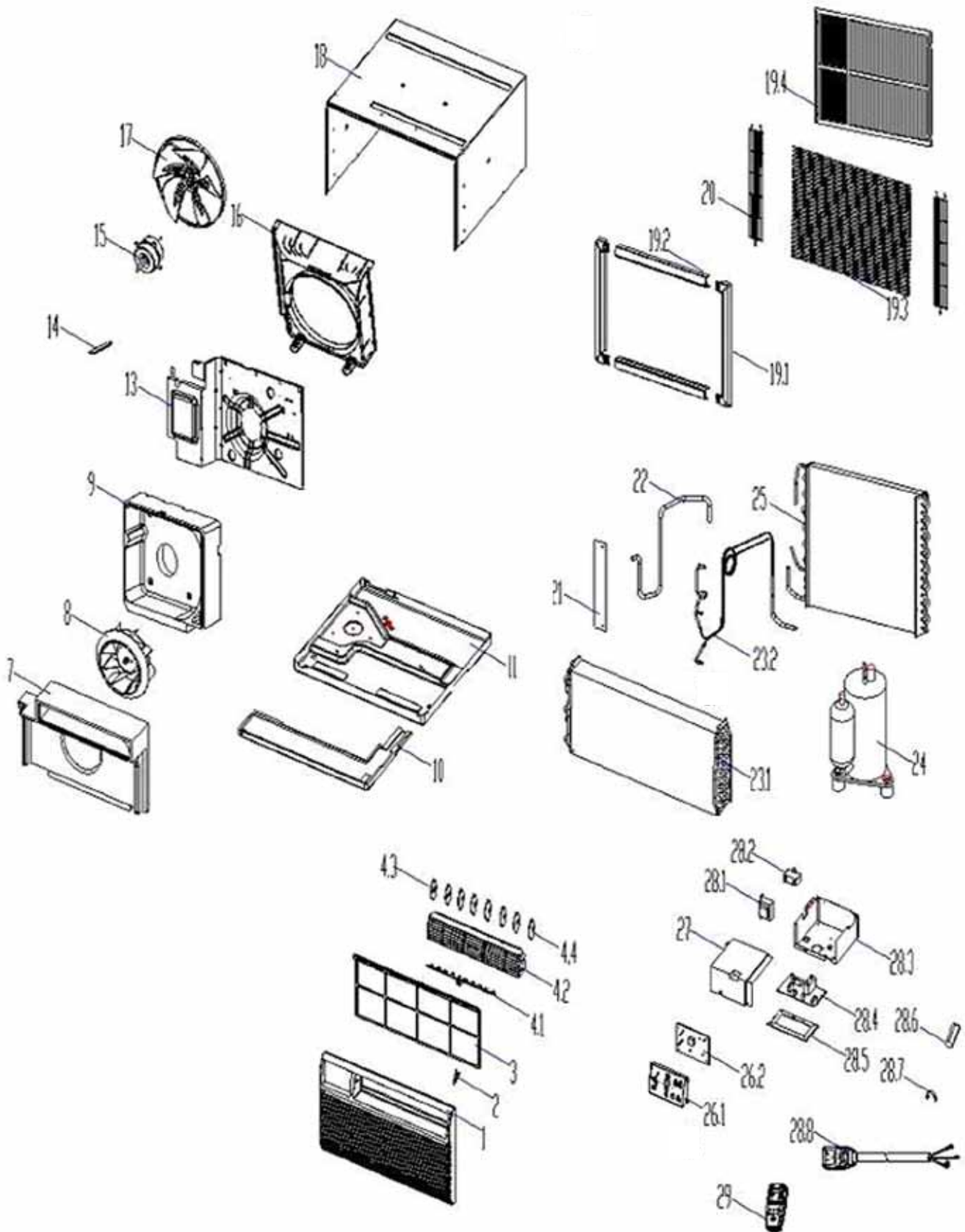


HEAT CONTROLLER, INC.

# **REPLACEMENT PARTS LIST**

**Room Air Conditioner with R-410A:  
BG-143G**

# EXPLODED VIEW



# REPLACEMENT PARTS

| Location | Part Name                         | Quantity | Part No.     |
|----------|-----------------------------------|----------|--------------|
| 1        | Front panel                       | 1        | 201121890037 |
| 2        | Air filter guide                  | 2        | 201121890003 |
| 3        | Air filter                        | 1        | 201121890036 |
| 4.1      | Louver connection bar             | 2        | 201121890035 |
| 4.2      | Horizontal louver                 | 1        | 201121890043 |
| 4.3      | Vertical louver                   | 2        | 201121890033 |
| 4.4      | Vertical louver                   | 6        | 201121890034 |
| 7        | Foam,front scroll                 | 1        | 202221890013 |
| 8        | Blower wheel                      | 1        | 201100100028 |
| 9        | Foam, rear scroll                 | 1        | 202221390003 |
| 10       | Foam,drip tray                    | 1        | 202221890010 |
| 11       | Chassis assembly                  | 1        | 201221890062 |
| 13       | Front separating board            | 1        | 201221890033 |
| 14       | Link, Front separating board      | 1        | 201221890034 |
| 15       | Fan motor                         | 1        | 202400400954 |
| 16       | Rear separating board             | 1        | 201121890053 |
| 17       | Axial flow fan                    | 1        | 201100300022 |
| 18       | Cabinet                           | 1        | 201221390086 |
| 19.1     | Left and right frame bar          | 2        | 201121890008 |
| 19.2     | Up and down frame bar             | 2        | 201121890007 |
| 19.3     | Plastic net                       | 1        | 201121890009 |
| 19.4     | Sleeve rear grille                | 1        | 202921890000 |
| 20       | Rear net,air inlet                | 2        | 201221890031 |
| 21       | Separating board for power cord   | 1        | 201121890017 |
| 22       | Discharge pipe                    | 1        | 201621590214 |
| 23.1     | Evaporator                        | 1        | 201521890049 |
| 23.2     | Capillary assembly                | 1        | 201621890266 |
| 24       | Compressor                        | 1        | 201402000610 |
| 25       | Condenser assembly                | 1        | 201521890046 |
| 27       | Cover,E-part box                  | 1        | 201221890058 |
| 28.1     | Transformer                       | 1        | 202300900140 |
| 28.2     | Fan motor capacitor               | 1        | 202401100505 |
| 28.3     | E-part box                        | 1        | 201221890057 |
| 28.4     | Main control board assembly       | 1        | 201321390058 |
| 28.5     | Installation board for E-part box | 1        | 201121890090 |
| 28.6     | Capacitor                         | 1        | 202401000508 |
| 28.7     | Capacitor clamp                   | 1        | 201225590021 |
| 28.8     | Power cord assembly               | 1        | 202402260127 |
| 29       | Remote controller                 | 1        | 203355091112 |

Design, material, performance data and components  
subject to change without notice.

## HEAT CONTROLLER, INC.

1900 Wellworth Ave., Jackson, MI 49203 ♦ Ph. 517-787-2100 ♦ Fax 517-787-9341

THE QUALITY LEADER IN CONDITIONING AIR

[www.heatcontroller.com](http://www.heatcontroller.com)