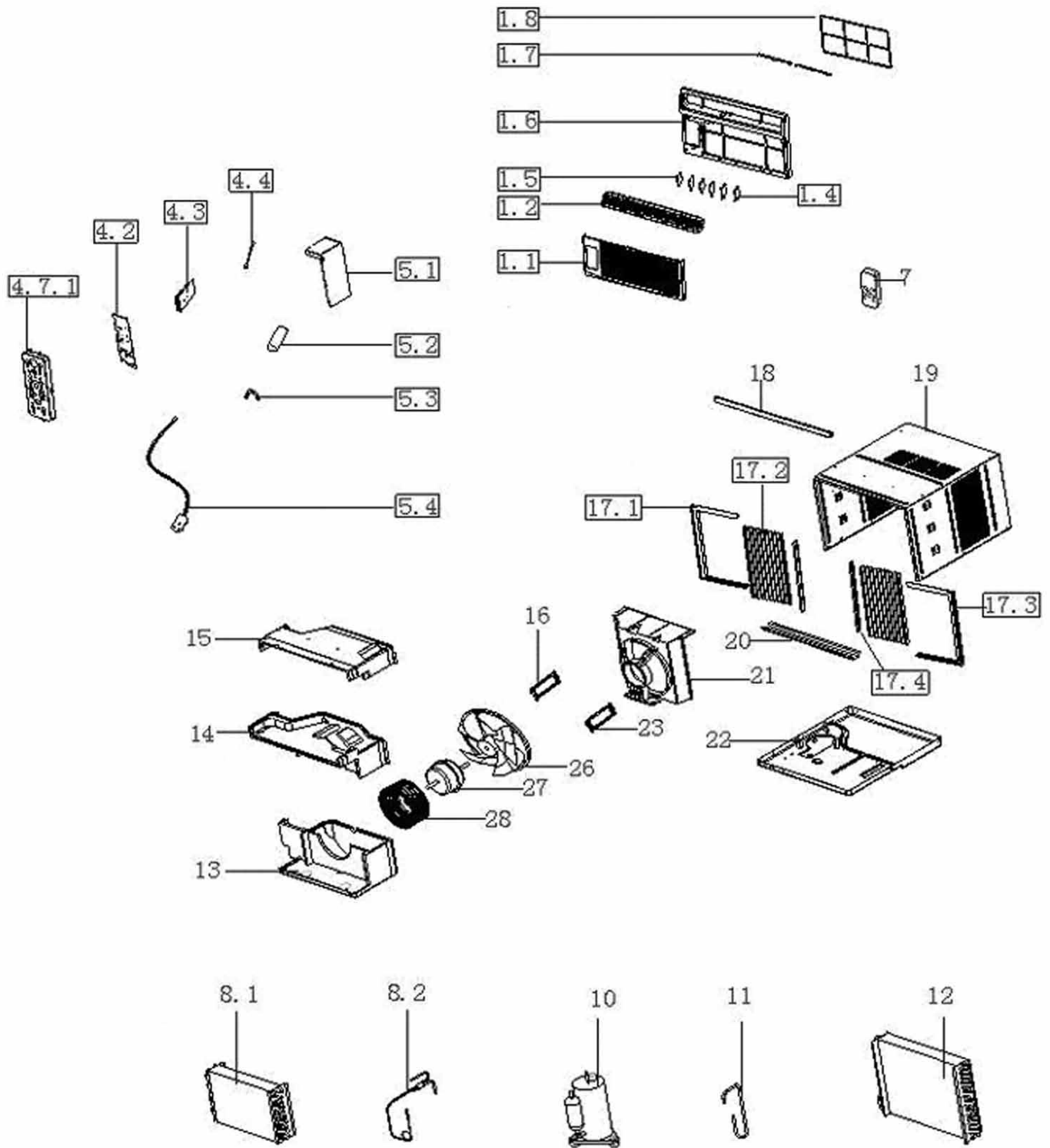


HEAT CONTROLLER, INC.

REPLACEMENT PARTS LIST

**Room Air Conditioner with R-410A:
RADS-81G**

EXPLODED VIEW



REPLACEMENT PARTS

Location	Part Name	Quantity	Part No.
1.1	Front board	1	201121190015
1.2	Louver	1	201121190019
1.4	Horizontal louver I	2	201121190017
1.5	Horizontal louver II	4	201121190016
1.6	Front frame	1	201121190013
1.7	Louver holder	2	201121190018
1.8	Air filter	1	201121190014
4.2	Cover for E-part box	1	201220290016
4.3	PCB	1	201321190050
4.4	Indoor temperature sensor	1	202432390005
4.7	Display box assembly	1	203321390103
4.7.1	Control panel	1	201121190020
5.1	E-part box	1	201221190070
5.2	Capacitor	1	202401400003
5.3	Capacitor clamp	1	201200100002
5.4	Power cord	1	202402200111
7	Remote controller	1	203355091112
8.1	Evaporator	1	201521390026
8.2	Capillary assembly	1	201621390223
10	compressor	1	201402000570
11	discharge pipe	1	201621390255
12	Condensor assembly	1	201521390060
13	Fan shell base	1	202220390009
14	Upper Fan shell	1	202220390008
15	Fan shell cover	1	202220390007
16	Left Linker for fan motor	1	201221390037
17.1	Left shutter frame	1	201120290005
17.2	Shutter	2	201120290003
17.3	Right shutter frame	1	201120290004
17.4	Shutter locking bar	2	201120290002
18	Up shutter frame	1	201221390094
19	unit cabinet	1	201221390093
20	Bottom shutter frame	1	201220290009
21	rear boarding	1	201121390013
22	chassis	1	201221390095
23	Right Linker for fan motor	1	201221390038
26	Axialflow fan	1	201100320614
27	Motor	1	202400420445
28	Centrifugal fan	1	201100120002

Design, material, performance data and components
subject to change without notice.

HEAT CONTROLLER, INC.

1900 Wellworth Ave., Jackson, MI 49203 ♦ Ph. 517-787-2100 ♦ Fax 517-787-9341

THE QUALITY LEADER IN CONDITIONING AIR

www.heatcontroller.com