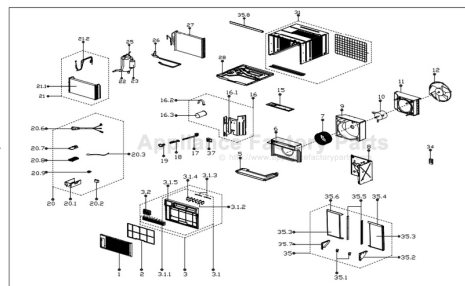


This Owner's Manual is provided and hosted by [Appliance Factory Parts](http://Appliance Factory Parts).



# COMFORT-AIRE RADS-183L Owner's Manual

[Shop genuine replacement parts for COMFORT-AIRE RADS-183L](#)



RADS-183L Parts List  
**EXPLODED VIEW**  
Room Air Conditioner with R-410A  
H&B Corporation, Inc.

[Find Your COMFORT-AIRE Air Conditioner Parts - Select From 599 Models](#)

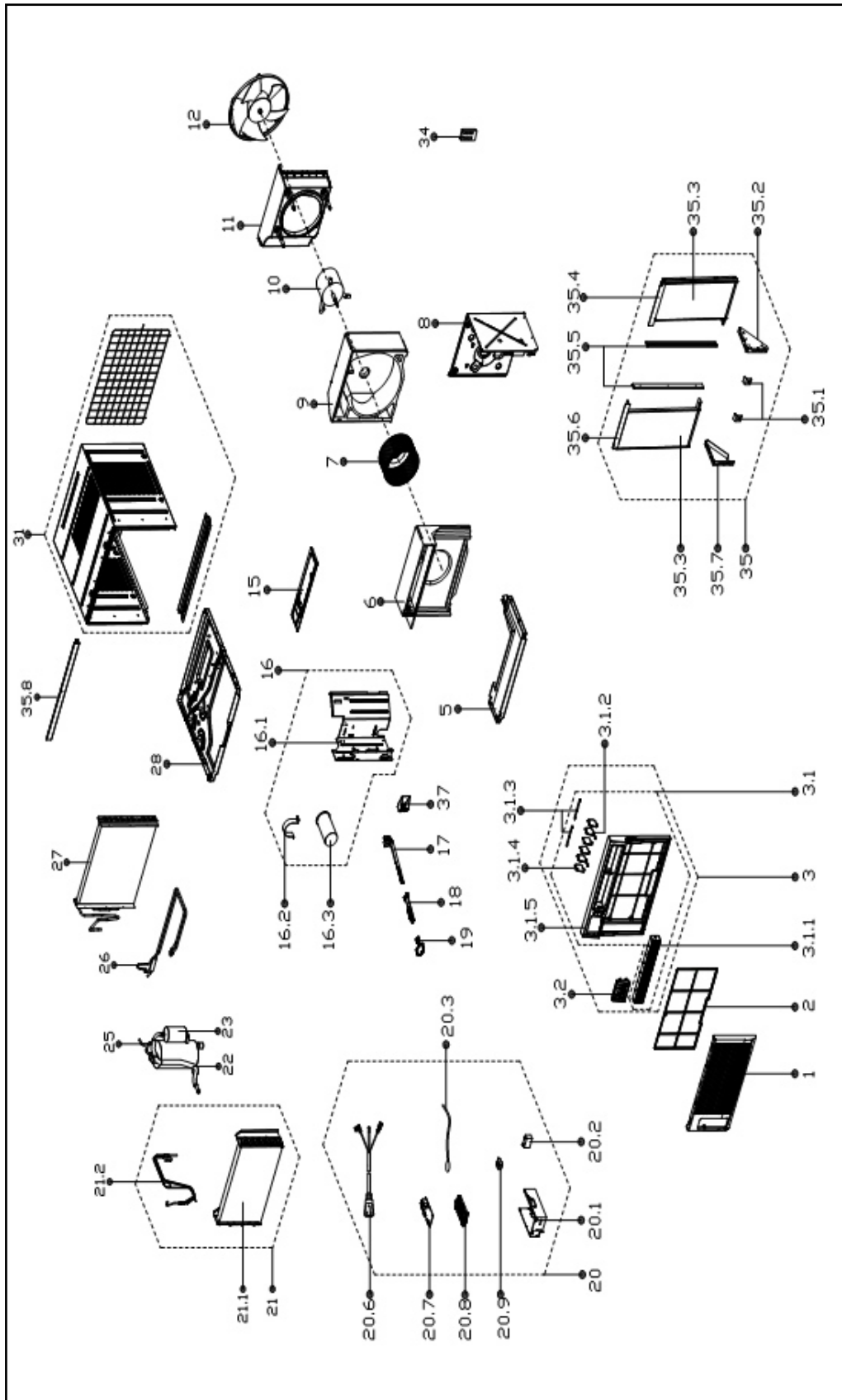
----- Manual continues below -----

HEAT CONTROLLER

**REPLACEMENT  
PARTS LIST**

**Room Air Conditioner with R-410A:  
RADS-183L**

# EXPLODED VIEW



# REPLACEMENT PARTS

| Location | Part Name                        | Quantity | Part No.     |
|----------|----------------------------------|----------|--------------|
| 1        | Front panel                      | 1        | 2011219A0375 |
| 2        | Air filter                       | 1        | 2011219A0840 |
| 3        | Panel frame assembly             | 1        | 2011218A0155 |
| 3.1      | Panel frame                      | 1        | 201121990124 |
| 3.1.1    | Air outlet assembly              | 1        | 201121990043 |
| 3.1.2    | Horizontal louver                | 2        | 201121990044 |
| 3.1.3    | Connecting rod of louver         | 2        | 201121990046 |
| 3.1.4    | Horizontal louver                | 4        | 201121990045 |
| 3.1.5    | Panel frame                      | 1        | 201121990042 |
| 3.2      | Display box assembly             | 1        | 203321890139 |
| 5        | Condenser water tray             | 1        | 202221990002 |
| 6        | Upper volute shell               | 1        | 202221990031 |
| 7        | Centrifugal fan                  | 1        | 201100120004 |
| 8        | Front right barrier              | 1        | 201221990190 |
| 9        | Rear volute shell assembly       | 1        | 202221990030 |
| 10       | Asynchronous motor               | 1        | 202400401567 |
| 11       | Rear separating                  | 1        | 201121990298 |
| 12       | Axial flow fan                   | 1        | 201100320005 |
| 15       | Front cover                      | 1        | 201221990189 |
| 16       | Front left barrier               | 1        | 203321990309 |
| 16.1     | Front left barrier               | 1        | 201221990187 |
| 16.2     | Capacitor of compressor          | 1        | 202401000074 |
| 16.3     | Capacitor clip                   | 1        | 201200100002 |
| 17       | Fresh air door                   | 1        | 201121990296 |
| 18       | Bracket of fresh air door        | 1        | 201121990295 |
| 19       | Connecting rod of fresh air door | 1        | 201121990297 |
| 20       | Electronic control box assembly  | 1        | 203321990319 |
| 20.1     | Electronic control box           | 1        | 201221990185 |
| 20.2     | transformer                      | 1        | 202300900140 |
| 20.3     | Pipe temperature sensor assembly | 1        | 202301300077 |
| 20.6     | Power cord                       | 1        | 202419990024 |
| 20.7     | Main control board assembly      | 1        | 201321990281 |
| 20.8     | Bracket of main control board    | 1        | 201121890173 |
| 20.9     | Capacitor of fan motor           | 1        | 202401100967 |
| 21       | Evaporator coil assembly         | 1        | 201521990167 |
| 21.1     | Evaporator coil                  | 1        | 201521990168 |
| 21.2     | Capillary assembly               | 1        | 201621990836 |
| 22       | Suction pipe assembly            | 1        | 201621990833 |
| 23       | Compressor                       | 1        | 201400611174 |
| 25       | Discharge pipe assembly          | 1        | 201621990834 |
| 26       | Super-cooling pipe               | 1        | 201621990819 |
| 27       | Condenser assembly               | 1        | 201521990169 |
| 28       | Chassis assembly                 | 1        | 201221990128 |
| 31       | Cabinet assembly                 | 1        | 201221890081 |
| 34       | Remote controller                | 1        | 2033550A3128 |
| 35       | Installation accessory           | 1        | 202821990050 |
| 35.1     | Locking bar                      | 2        | 201222190008 |
| 35.2     | Right bracket                    | 1        | 201221890083 |
| 35.3     | Shutter                          | 2        | 201121990022 |
| 35.4     | Right shutter frame              | 1        | 201121990021 |
| 35.5     | Connecting bar of cabinet        | 2        | 201121990285 |
| 35.6     | Left shutter frame               | 1        | 201121990020 |
| 35.7     | Left supporter                   | 1        | 201221890082 |
| 35.8     | Top shutter frame                | 1        | 201221990016 |
| 37       | Bracket of fresh air door        | 1        | 201121890102 |
|          | Display label                    |          | 2020213A0795 |
|          | Carton                           |          | 2026219A0937 |

Due to ongoing product improvements, specifications and dimensions are subject to change and correction without notice or incurring obligations. Determining the application and suitability for use of any product is the responsibility of the installer. Additionally, the installer is responsible for verifying dimensional data on the actual product prior to beginning any installation preparations.

Incentive and rebate programs have precise requirements as to product performance and certification. All products meet applicable regulations in effect on date of manufacture; however, certifications are not necessarily granted for the life of a product. Therefore, it is the responsibility of the applicant to determine whether a specific model qualifies for these incentive/rebate programs.

# HEAT CONTROLLER

1900 Wellworth Ave., Jackson MI 49203 • Ph. 517-787-2100 • [www.heatcontroller.com](http://www.heatcontroller.com)

A  Company