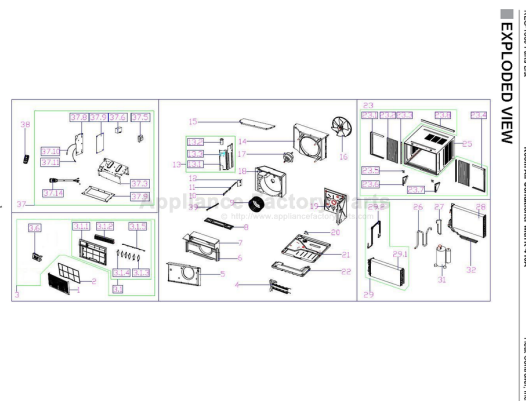


This Owner's Manual is provided and hosted by Appliance Factory Parts.



COMFORT-AIRE REG-183J-20A Owner's Manual

[Shop genuine replacement parts for COMFORT-AIRE
REG-183J-20A](#)



[Find Your COMFORT-AIRE Air Conditioner Parts - Select From 599 Models](#)

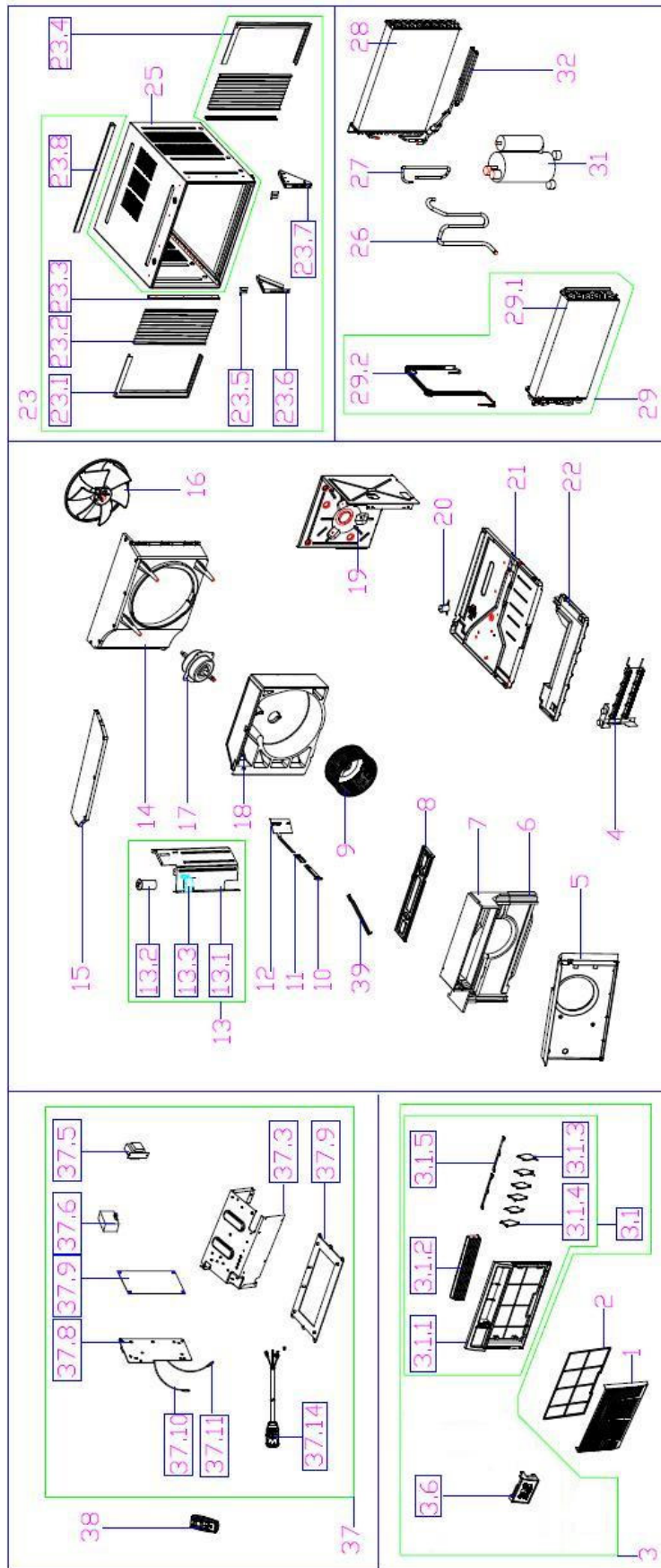
----- Manual continues below -----

HEAT CONTROLLER, INC.

REPLACEMENT PARTS LIST

**Room Air Conditioner with R-410A:
REG-183J-20A**

EXPLODED VIEW



REPLACEMENT PARTS

Location	Part Name	Quantity	Part No.
1	Front panel	1	2011219A0375
2	Air filter	1	201121990083
3	Panel frame assembly	1	2011219A0687
3.1.1	Panel frame	1	2011219A0376
3.1.2	Air outlet assembly	1	P0000879737
3.1.3	Horizontal louver	2	2011219A0393
3.1.4	Horizontal louver	4	2011219A0394
3.1.5	Connecting rod of louver	2	2011219A0395
3.6	Display box assembly	1	2033219A0256
4	Electric heater	1	202403100882
5	Box for Electronic heater	1	201221990107
6	Volute shell base	1	202221990014
7	Upper volute shell	1	202221990016
8	Front cover	1	201221990090
9	Centrifugal fan	1	201100120010
10	Connecting rod of fresh air door	1	201121990047
11	Bracket of fresh air door	1	201121990029
12	Fresh air door	1	201121990019
13	Front left barrier	1	203321990238
13.1	Front left barrier	1	201221990173
13.2	Capacitor of compressor	1	202401090056
13.3	Capacitor clip	1	201200100002
14	Rear separating	1	201121990288
15	Rear cover	1	201121990162
16	Axial flow fan	1	201100320005
17	Asynchronous motor	1	202400401075
18	Rear volute shell assembly	1	202221990015
19	Front right barrier	1	201221990017
20	Drain valve	1	202301610703
21	Chassis assembly	1	201221990129
22	Condenser water tray	1	202221990002
23	Installation accessory	1	202821990050
23.1	Left shutter frame	1	201121990020
23.2	Shutter	2	201121990022
23.3	Connecting bar of cabinet	2	201121990285
23.4	Right shutter frame	1	201121990021
23.5	Locking bar	2	201222190008
23.6	Left supporter	1	201221890082
23.7	Right bracket	1	201221890083
23.8	Top shutter frame	1	201221990016
25	Cabinet assembly	1	201221990153
26	Suction pipe assembly	1	201621990536
27	Discharge pipe assembly	1	201621990735
28	Condenser assembly	1	201521990153
29	Evaporator coil assembly	1	201521990108
29.1	Evaporator	1	201521990105
29.2	Capillary assembly	1	201621990552
31	Compressor	1	201400601290
32	Super-cooling pipe	1	201621890376
37	Electronic control box assembly	1	2033219A0366
37.3	Electronic control box	1	201221990099
37.5	transformer	1	202300900140
37.6	Capacitor of fan motor	1	202401100967
37.8	Main control board assembly	1	201321990203
37.9	Bracket of main control board	1	201121890090
37.10	Pipe temperature sensor assembly	1	202301300077
37.11	Ambient temperature sensor assembly	1	202301300210
37.14	Power cord	1	202419990025
38	Remote controller	1	2033550A3128
39	Buttstrap	1	201221990108

Design, material, performance data and components
subject to change without notice.

HEAT CONTROLLER, INC.

1900 Wellworth Ave., Jackson, MI 49203 • Ph. 517-787-2100 • Fax 517-787-9341

THE QUALITY LEADER IN CONDITIONING AIR

www.heatcontroller.com