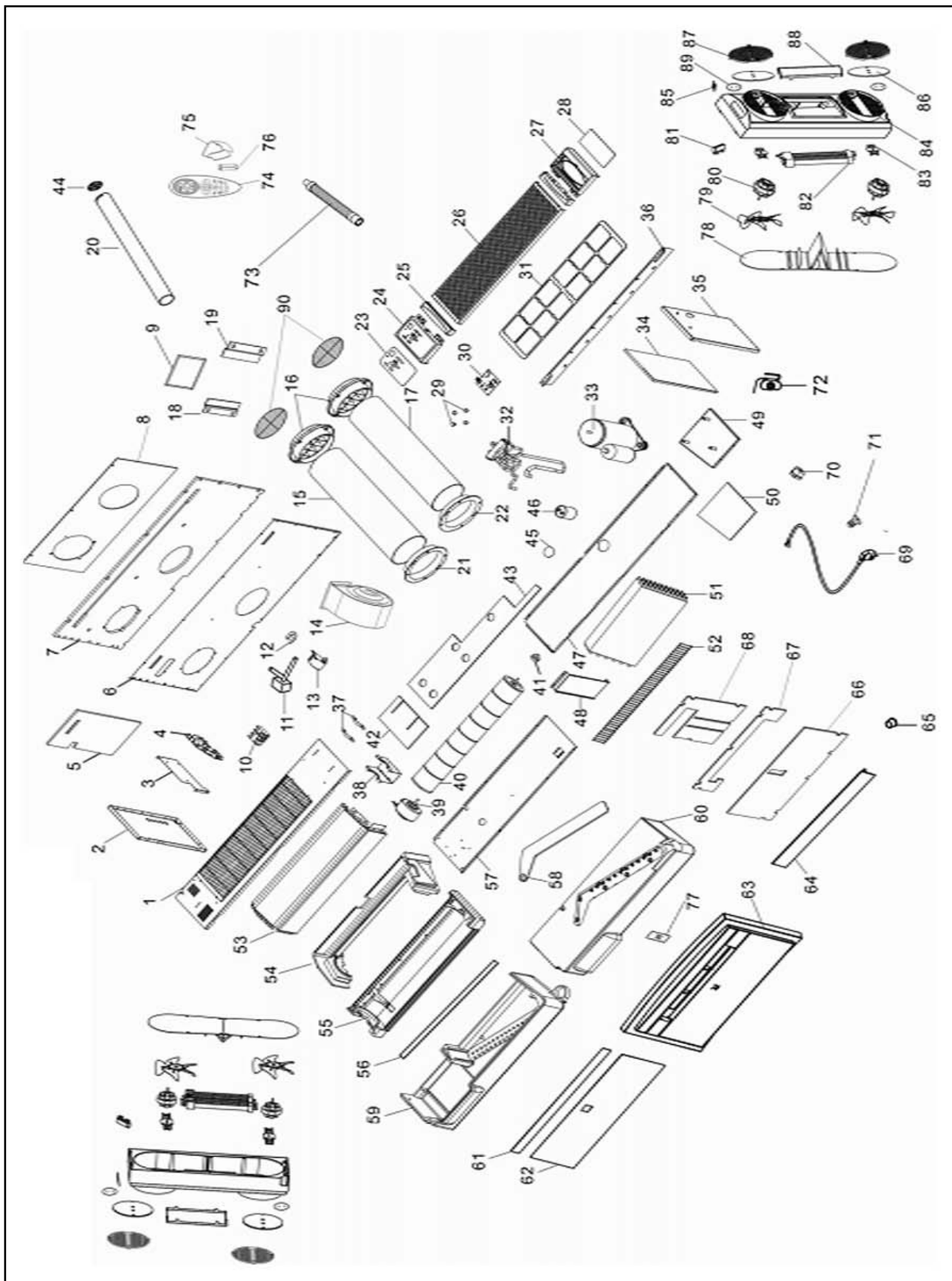


HEAT CONTROLLER

**REPLACEMENT
PARTS LIST**

Thru-the-Wall:
RPHE-103G

EXPLODED VIEW



REPLACEMENT PARTS

Location	Part Description	Quantity	Part No.
1	Top cover assembly	1	PTTW10-001
2	Left cover	1	PTTW10-002
3	Fixture for PCB	1	PTTW10-003
4	PCB EC	1	PTTW10-004
5	Back insulation material (comp side)	1	PTTW10-005
6	Back cover	1	PTTW10-006
7	Back insulation material (outside)	1	PTTW10-007
8	Back insulation material (inside)	1	PTTW10-008
9	Update fresh air filter	1	PTTW10-009
10	Terminal	1	PTTW10-010
11	Bypass valve	1	PTTW10-011
12	Inside cable plastic ring	3	PTTW10-012
13	Step motor	1	PTTW10-013
14	Condenser EC fan motor	1	PTTW10-014
15	PP air inlet tube	1	PTTW10-015
16	Rub cup grill	2	PTTW10-016
17	PP air outlet tube	1	PTTW10-017
18	Slider 1	1	PTTW10-018
19	Slider 2	1	PTTW10-019
20	Fresh air pipe	1	PTTW10-020
21	O-ring for air inlet pipe	1	PTTW10-021
22	O-ring for air outlet pipe	1	PTTW10-022
23	On board control box film	1	PTTW10-023
24	On board control box	1	PTTW10-024
25	Handle	2	PTTW10-025
26	Air inlet grille	1	PTTW10-026
27	Remote control box	1	PTTW10-027
28	Remote control box cover	1	PTTW10-028
29	Rubber support	4	PTTW10-029
30	On board control PCB	1	PTTW10-030
31	Filter	1	PTTW10-031
32	Reversing valve and tubes assy.	1	PTTW10-032
33	Compressor assembly	1	PTTW10-033
34	Right cover insulation material	1	PTTW10-034
35	Right cover	1	PTTW10-035
36	Modified Wall bracket (6mm)	1	PTTW10-036
37	Indoor motor cover	2	PTTW10-037
38	Indoor EC motor bracket	1	PTTW10-038
39	Indoor EC motor	1	PTTW10-039
40	Tangential fan	1	PTTW10-040
41	Axletree seat	1	PTTW10-041
42	Top cover insulation material	1	PTTW10-042
43	Basic pan insulation material	1	PTTW10-043
44	Fresh air net	1	PTTW10-044
45	Compressor capacitor insulation material	1	PTTW10-045
46	Capacitor for compressor	1	PTTW10-046

Continued on next page

REPLACEMENT PARTS CONTINUED

Location	Part Description	Quantity	Part No.
47	Basic pan	1	PTTW10-047
48	Link plate	1	PTTW10-048
49	Compressor mounting sheet	1	PTTW10-049
50	Compressor bottom insulation material	1	PTTW10-050
51	Condenser assembly	1	PTTW10-051
52	Air outlet grill	1	PTTW10-052
53	Evaporator assembly	1	PTTW10-053
54	Evaporator top epp	1	PTTW10-054
55	Evaporator down epp	1	PTTW10-055
56	Evaporator insulation material	1	PTTW10-056
57	Partition	1	PTTW10-057
58	Condenser top epp closer	1	PTTW10-058
59	Condenser lower epp	1	PTTW10-059
60	Condenser top epp	1	PTTW10-060
61	Upper acrylic panel	1	PTTW10-061
62	Down acrylic panel	1	PTTW10-062
63	Front panel	1	PTTW10-063
64	Flap panel	1	PTTW10-064
65	Axis sleeve	1	PTTW10-065
66	Front panel bottom insulation material	1	PTTW10-066
67	Front panel top insulation material	1	PTTW10-067
68	Front panel insulation material 3	1	PTTW10-068
69	Power cable	1	PTTW10-069
70	Cable plastic ring	1	PTTW10-070
71	Stoppie	1	PTTW10-071
72	Capillary assy.	1	PTTW10-072
73	Drain parts	1	PTTW10-073
74	Remote control	1	PTTW10-074
75	Remote control seat	1	PTTW10-075
76	Battery	2	PTTW10-076
77	LED display PCB	1	PTTW10-077
78	Speaker back plate	2	PTTW10-078
79	Speaker fan	4	PTTW10-079
80	Speaker fan motor	4	PTTW10-080
81	Speaker terminal block	2	PTTW10-081
82	Speaker PTC heater	2	PTTW10-082
83	Speaker fan motor bracket	4	PTTW10-083
84	Speaker cover	2	PTTW10-084
85	Speaker warning label	2	PTTW10-085
86	Speaker filter	4	PTTW10-086
87	Speaker inlet grille	4	PTTW10-087
88	Speaker outlet grille	2	PTTW10-088
90	Metal grill	2	PTTW10-090
FILTER-1	Carbon Filter (2 pieces)	2	PTTW-Carbon Filter
FILTER-2	Photocatalytic Filter (2 pieces)	2	PTTW- Catalytic Filter

Due to ongoing product improvements, specifications and dimensions are subject to change and correction without notice or incurring obligations. Determining the application and suitability for use of any product is the responsibility of the installer. Additionally, the installer is responsible for verifying dimensional data on the actual product prior to beginning any installation preparations.

Incentive and rebate programs have precise requirements as to product performance and certification. All products meet applicable regulations in effect on date of manufacture; however, certifications are not necessarily granted for the life of a product. Therefore, it is the responsibility of the applicant to determine whether a specific model qualifies for these incentive/rebate programs.

HEAT CONTROLLER

1900 Wellworth Ave., Jackson MI 49203 • Ph. 517-787-2100 • www.heatcontroller.com

A  Company