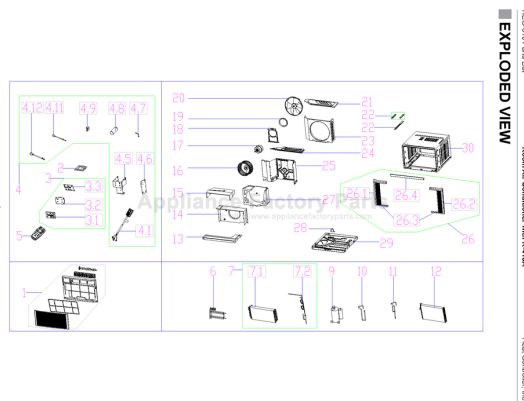


This Owner's Manual is provided and hosted by Appliance Factory Parts.



COMFORT-AIRE REG-81J Owner's Manual

[Shop genuine replacement parts for COMFORT-AIRE
REG-81J](#)



[Find Your COMFORT-AIRE Air Conditioner Parts - Select From 599 Models](#)

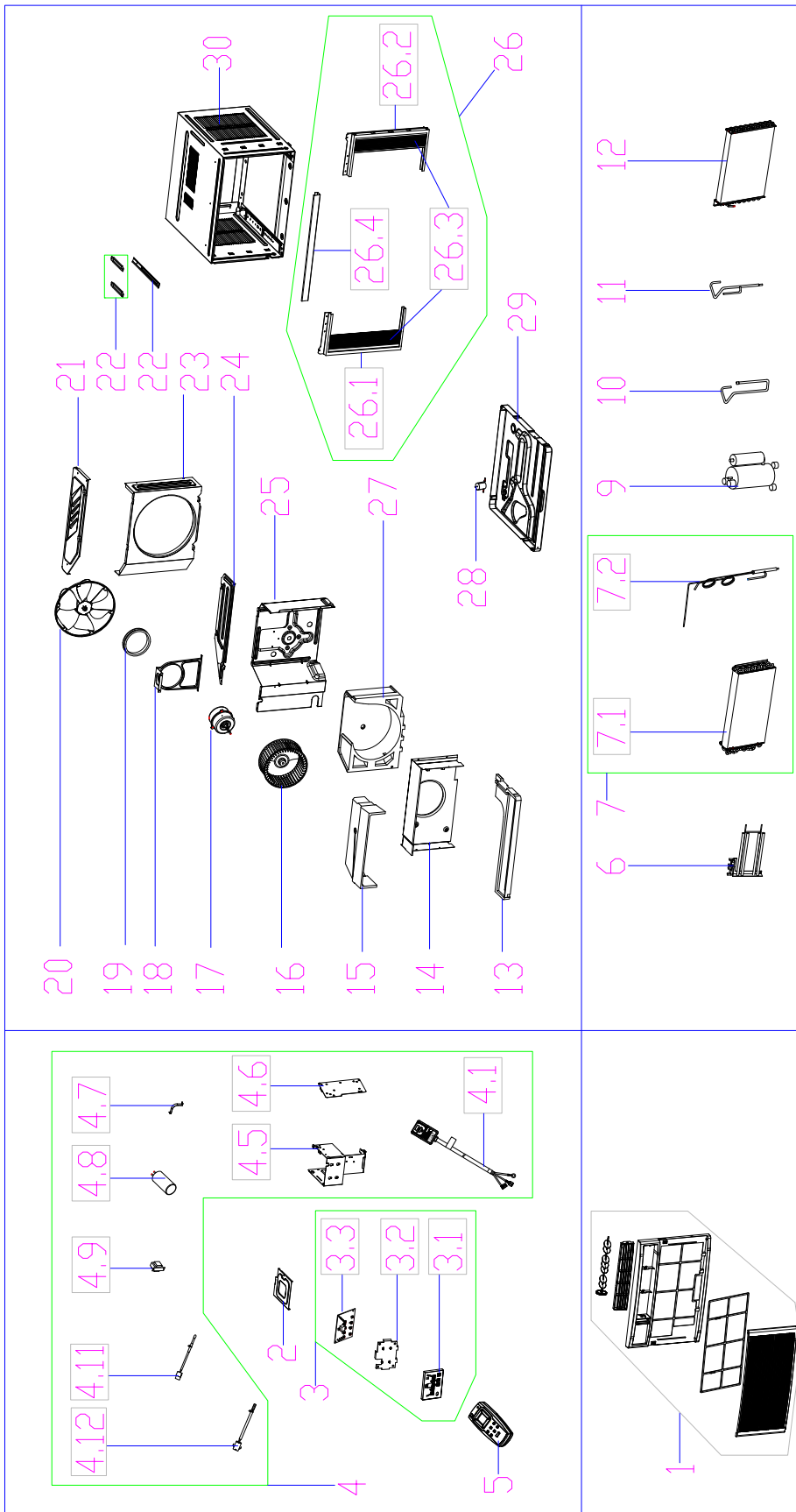
----- Manual continues below -----

HEAT CONTROLLER, INC.

REPLACEMENT PARTS LIST

**Room Air Conditioner with R-410A:
REG-81J**

EXPLODED VIEW



REPLACEMENT PARTS

Location	Part Name	Quantity	Part No.
1	Panel assembly	1	2011213A0065
1.3	Air filter	1	201121790244
1.4	Air outlet assembly	1	2011213A0100
2	Cover of electronic control box	1	201221390055
3	Display box assembly	1	2033213A0063
3.1	Control panel	1	2011213A0059
3.2	Display Panel artwork		2020213A0797
4	Electronic control box assembly	1	2033213A0083
4.1	Power cord	1	202402260126
4.5	Electronic control box	1	201221390056
4.6	Main control board assembly	1	201321390072
4.7	Capacitor clip	1	201221790129
4.8	Capacitor of compressor	1	202401400004
4.9	Transformer	1	202300900139
4.11	Indoor temperature sensor assembly	1	202301300092
4.12	Pipe temperature sensor assembly	1	202301300077
5	Remote controller	1	2033550A3128
6	Electric heater	1	202403100267
7	Evaporator coil assembly	1	201521390098
7.1	Evaporator	1	201521390054
7.2	Capillary assembly	1	201621390329
9	Compressor	1	201402200400
11	Discharge pipe assembly	1	201621390326
12	Condenser assembly	1	201521390055
13	Condenser water tray	1	202221790011
14	Air-inlet board	1	201221390058
15	Upper volute shell	1	202621390026
16	Centrifugal fan	1	201100100026
17	Asynchronous motor	1	202400420634
18	Supporter assembly of fan motor	1	201221390046
19	Washer for motor bracket	1	202721390004
20	Axial flow fan	1	201100300023
21	Rear cover	1	201221790106
22	Connecting board	1	201221390045
22	Connecting board	2	201221790102
23	Rear separating	1	201221390059
24	Front cover	1	201221390054
25	Front separating board	1	201221790103
26	Installation accessory	1	202821390007
26.1	Left shutter frame	1	201121390067
26.2	Right shutter frame	1	201121390068
26.3	Shutter	2	201121790223
26.4	Top shutter frame	1	201221390060
27	Volute Shell	1	202221390001
28	Drain valve	1	202301610703
29	Chassis assembly	1	201221390133
30	Cabinet assembly	1	201221390119

Design, material, performance data and components
subject to change without notice.

HEAT CONTROLLER, INC.

1900 Wellworth Ave., Jackson, MI 49203 • Ph. 517-787-2100 • Fax 517-787-9341

THE QUALITY LEADER IN CONDITIONING AIR

www.heatcontroller.com