



# RSG14-1B

Parts List  
22-July-2011



*This parts list is current as of the above revision date.*

Form Number: 92-42810-RSG14-1B

# Table of Contents

Model Explanation .....	Page 3
Parts Numbers	
Panels - Miscellaneous.....	Page 4
Electrical-Fan Group .....	Page 5
Coil Parts .....	Page 5
Compressor Group.....	Page 6
Accessories.....	Page 7
Drawings/Photographs	
Exploded View .....	Page 8
Valve Mounting Detail .....	Page 9
Control Box .....	Page 10
Notes .....	Page 11

**MODEL NUMBER EXPLANATION**

<b>R</b>	<b>S</b>	<b>G</b>	<b>1</b>	<b>4</b>	<b>1</b>	<b>8</b>	<b>-</b>	<b>1</b>	<b>B</b>
1			2		3				

- (1) **SERIES**
- (2) **COOLING CAPACITY (BTU/HR)**
  - 18= 18,000
  - 24= 24,000
  - 30= 30,000
  - 36= 36,000
  - 42= 42,000
  - 48= 48,000
  - 49= 47,000
  - 56= 54,000
  - 60= 60,000
- (3) **OPTIONS**

**SERIAL NUMBER EXPLANATION**

<b>7</b>	<b>0</b>	<b>9</b>	<b>3</b>	<b>N</b>	<b>0</b>	<b>7</b>	<b>0</b>	<b>1</b>	<b>9</b>	<b>9</b>	<b>9</b>	<b>9</b>	<b>9</b>
1				2	3		4	5					

- (1) **COMPRESSOR IDENTIFICATION NUMBER**
- (2) **PRODUCTION LOCATION**
- (3) **WEEK OF PRODUCTION**
- (4) **YEAR OF PRODUCTION**
- (5) **PRODUCTION NUMBER**

No.	Notes	MODEL COOLING CAPACITY VARIATION	RSG14	RSG14	RSG14	RSG14
			18 1B	24 1B	30 1B	36 1B
<b>SHEET METAL PARTS, MISCELLANEOUS</b>						
1		Cabinet	AE-100726-33	AE-100726-33	AE-100726-33	AE-100726-34
2		Cabinet Panel	AE-100727-33	AE-100727-33	AE-100727-33	AE-100727-34
3		Base Pan	AE-101588-03	AE-101588-03	AE-101588-03	AE-101588-03
4		Control Box	AE-100654-31	AE-100654-31	AE-100654-31	AE-100657-31
5		Control Box Cover	AE-100657-31	AE-100657-31	AE-100657-31	AE-100657-31
6		Top Panel	AE-100652-03	AE-100652-03	AE-100652-03	AE-100652-03
8		Grille	95-100906-04	95-100906-04	95-100906-04	95-100906-04
		Center Cap - Blank (for Grille)	91-101123-09	91-101123-09	91-101123-09	91-101123-09
12		Valve Mounting Panel	AE-57780-01	AE-57780-01	AE-57780-01	AE-100185-31
14		Service Valve - Suction	See Coil Group			
15		Service Valve - Liquid	See Coil Group			
17		Low Voltage Cover	AE-57756-01	AE-57756-01	AE-57756-01	AE-57756-01
		Touch-up Paint - Dark Gray (Aerosol)	523009	523009	523009	523009
		Touch-up Paint - Dark Gray (Paint Pens)	523011	523011	523011	523011
		Touch-up Paint - Light Gray (Aerosol)	523014	523014	523014	523014
		Touch-up Paint - Light Gray (Paint Pens)	523015	523015	523015	523015

No.	Notes	MODEL COOLING CAPACITY VARIATION	RSG14	RSG14	RSG14	RSG14
			42 1B	48 1B	49 1B	56 1B
<b>SHEET METAL PARTS, MISCELLANEOUS</b>						
1		Cabinet	AE-100726-34	AE-100726-34	AE-100726-34	AE-100726-34
2		Cabinet Panel	AE-100727-34	AE-100727-34	AE-100727-34	AE-100727-34
3		Base Pan	AE-101588-03	AE-101588-03	AE-101588-03	AE-101588-03
4		Control Box	AE-100654-33	AE-100654-34	AE-100654-34	AE-100654-34
5		Control Box Cover	AE-100657-31	AE-100657-31	AE-100657-31	AE-100657-31
6		Top Panel	AE-100652-03	AE-100652-03	AE-100652-03	AE-100652-03
8		Grille	95-100906-04	95-100906-04	95-100906-04	95-100906-04
		Center Cap - Blank (for Grille)	91-101123-09	91-101123-09	91-101123-09	91-101123-09
12		Valve Mounting Panel	AE-100185-31	AE-100185-31	AE-100185-31	AE-100185-31
14		Service Valve - Suction	See Coil Group			
15		Service Valve - Liquid	See Coil Group			
17		Low Voltage Cover	AE-57756-01	AE-57756-01	AE-57756-01	AE-57756-01
		Touch-up Paint - Dark Gray (Aerosol)	523009	523009	523009	523009
		Touch-up Paint - Dark Gray (Paint Pens)	523011	523011	523011	523011
		Touch-up Paint - Light Gray (Aerosol)	523014	523014	523014	523014
		Touch-up Paint - Light Gray (Paint Pens)	523015	523015	523015	523015

No.	Notes	MODEL COOLING CAPACITY VARIATION	RSG14			
			60 1B			
<b>SHEET METAL PARTS, MISCELLANEOUS</b>						
1		Cabinet	AE-100726-34			
2		Cabinet Panel	AE-100727-34			
3		Base Pan	AE-101588-03			
4		Control Box	AE-100654-34			
5		Control Box Cover	AE-100657-31			
6		Top Panel	AE-100652-03			
8		Grille	95-100906-04			
		Center Cap - Blank (for Grille)	91-101123-09			
12		Valve Mounting Panel	AE-100185-31			
14		Service Valve - Suction	See Coil Group			
15		Service Valve - Liquid	See Coil Group			
17		Low Voltage Cover	AE-57756-01			
		Touch-up Paint - Dark Gray (Aerosol)	523009			
		Touch-up Paint - Dark Gray (Paint Pens)	523011			
		Touch-up Paint - Light Gray (Aerosol)	523014			
		Touch-up Paint - Light Gray (Paint Pens)	523015			

No.	Notes	MODEL COOLING CAPACITY VARIATION	RSG14	RSG14	RSG14	RSG14	RSG14	
			18 1B	24 1B	30 1B	36 1B	42 1B	
<b>ELECTRICAL/FAN GROUP</b>								
7	Stk	Fan Motor - Before W2710	51-101774-02	51-101774-02	51-102870-01	51-102870-03	51-102728-13	
7	Stk	Fan Motor - After W2710	51-101774-02	51-101774-02	51-102870-01	51-102008-08	51-102728-13	
9	Stk	Fan Blade	70-102011-03	70-102011-03	70-21858-17	70-21858-17	70-21858-17	
16	Stk	Contactactor	42-42478-03	42-42478-03	42-42478-03	42-42478-03	42-42478-03	
17		Low Voltage Cover	See Panels - Miscellaneous					
18		Control Box Bottom	AE-100655-01	AE-100655-01	AE-100655-01	AE-100655-01	AE-100655-01	
19		Capacitor	See Compressor Group					

No.	Notes	MODEL COOLING CAPACITY VARIATION	RSG14	RSG14	RSG14	RSG14		
			48 1B	49 1B	56 1B	60 1B		
<b>ELECTRICAL/FAN GROUP</b>								
7	Stk	Fan Motor	51-102728-12	51-102728-13	51-102728-13	51-102728-12		
9	Stk	Fan Blade	70-21858-17	70-21858-17	70-21858-17	70-21858-17		
16	Stk	Contactactor	42-102851-02	42-102851-02	42-42478-02	42-102851-03		
17		Low Voltage Cover	See Panels - Miscellaneous					
18		Control Box Bottom	AE-100655-01	AE-100655-01	AE-100655-01	AE-100655-01		
19		Capacitor	See Compressor Group					

No.	Notes	MODEL COOLING CAPACITY VARIATION	RSG14	RSG14	RSG14	RSG14	RSG14
			18 1B	24 1B	30 1B	36 1B	42 1B
<b>COIL GROUP</b>							
11	Stk	Condenser Coil	AS-103077-03	AS-101761-03	AS-101761-03	AS-102486-03	AS-103081-03
13		Valve Mounting Bracket	AE-57781-01	AE-57781-01	AE-57781-01	AE-57781-01	AE-57781-02
14		Service Valve - Suction	61-21368-07	61-21368-07	61-21368-07	61-21368-07	61-21368-08
15		Service Valve - Liquid	61-21368-05	61-21368-05	61-21368-05	61-21368-05	61-21368-05
		Distributor - Two Way (1/2 in. to 1/2 in.)	83-19988-01	N/A	N/A	N/A	N/A
		Distributor - Three Way (3/8 in. to 3/8 in.)	N/A	83-17467-07	83-17467-07	N/A	N/A
		Filter Drier	83-22755-12	83-22755-12	83-22755-12	83-22755-12	83-22755-12

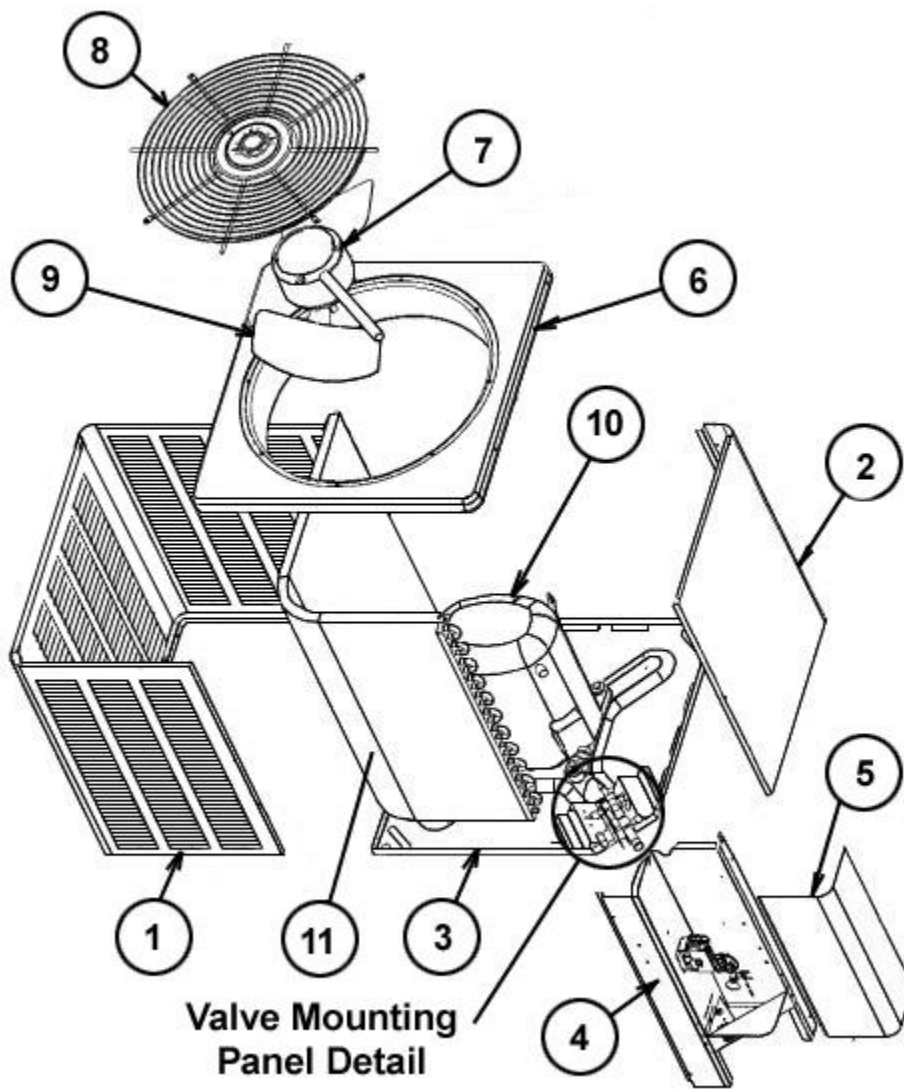
No.	Notes	MODEL COOLING CAPACITY VARIATION	RSG14	RSG14	RSG14	RSG14	
			48 1B	49 1B	56 1B	60 1B	
<b>COIL GROUP</b>							
11	Stk	Condenser Coil	AS-102980-01	AS-102980-01	AS-102980-01	AS-102980-01	
13		Valve Mounting Bracket	AE-57781-02	AE-57781-02	AE-57781-02	AE-57781-02	
14		Service Valve - Suction	61-21368-08	61-21368-08	61-21368-08	61-21368-08	
15		Service Valve - Liquid	61-21368-05	61-21368-05	61-21368-05	61-21368-05	
		Filter Drier	83-22755-12	83-22755-12	83-22755-12	83-22755-12	

No.	Notes	MODEL COOLING CAPACITY VARIATION	RSG14 18 1B	RSG14 24 1B	RSG14 30 1B	RSG14 36 1B
<b>COMPRESSOR GROUP</b>						
		<b>Compressor ID:</b>	<b>7993</b>	<b>7994</b>	<b>7995</b>	<b>7996</b>
10	Stk	Compressor	55-102045-14S	55-102045-24S	55-102045-31S	55-102045-03
		Grommet (4)	56-18518-04	56-18518-04	56-18518-04	56-18518-04
19	Stk	Capacitor - Compressor (Before W2710)	N/A	N/A	43-100510-24	43-100510-37
19	Stk	Capacitor - Compressor/Fan (Before W2710)	43-26261-40	43-101665-44	N/A	N/A
19	Stk	Capacitor - Compressor (After W2710)	N/A	N/A	43-100510-24	N/A
19	Stk	Capacitor - Compressor/Fan (After W2710)	43-26261-40	43-101665-44	N/A	43-101665-41
	Stk	Compressor Wiring Harness (Molded Plug)	45-100834-80	45-100834-80	45-100834-80	45-100834-80
		Crankcase Heater	N/A	N/A	N/A	N/A

No.	Notes	MODEL COOLING CAPACITY VARIATION	RSG14 42 1B	RSG14 48 1B	RSG14 49 1B	RSG14 56 1B
<b>COMPRESSOR GROUP</b>						
		<b>Compressor ID:</b>	<b>7997</b>	<b>7998</b>	<b>8254</b>	<b>8255</b>
10	Stk	Compressor	55-102045-15S	55-102045-09S	55-102045-06S	55-102045-58S
		Grommet (4)	56-18518-06	56-18518-06	56-18518-06	56-18518-06
19	Stk	Capacitor - Compressor	43-100510-37	43-100510-29	43-100510-29	43-100510-29
	Stk	Compressor Wiring Harness (Molded Plug)	45-100834-80	45-100834-80	45-100834-80	45-100834-80
	Stk	Crankcase Heater	N/A	44-101884-01	44-101884-01	44-101884-01

No.	Notes	MODEL COOLING CAPACITY VARIATION	RSG14 60 1B			
<b>COMPRESSOR GROUP</b>						
		<b>Compressor ID:</b>	<b>7999</b>			
10	Stk	Compressor	55-102045-26S			
		Grommet (4)	56-18518-06			
19	Stk	Capacitor - Compressor	43-100510-29			
	Stk	Compressor Wiring Harness (Molded Plug)	45-100834-80			
	Stk	Crankcase Heater	44-101884-01			

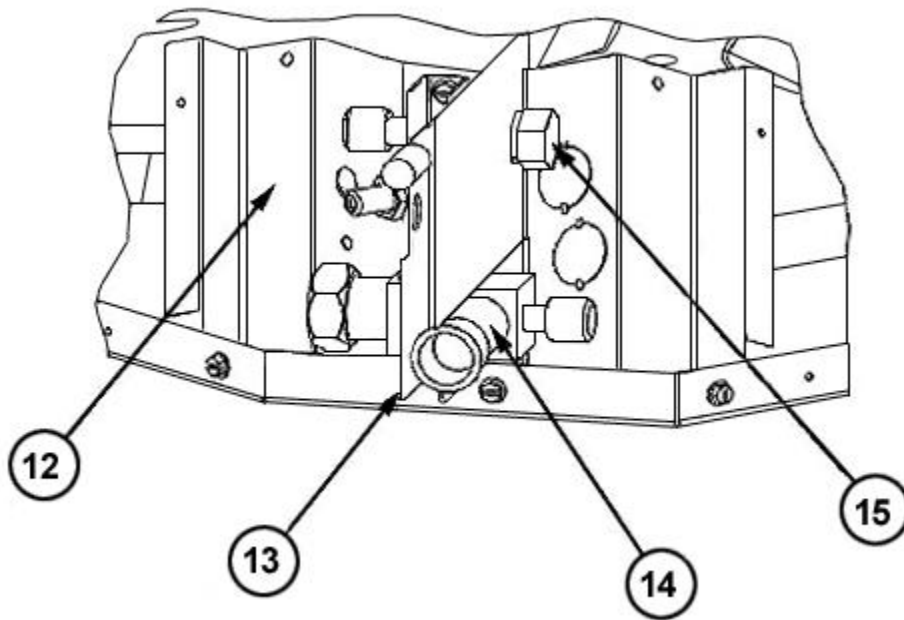
No.	Notes	MODEL COOLING CAPACITY VARIATION	RSG14 ALL ALL
<b>ACCESORIES</b>			
		Low Ambient Control	RXAD-A07
		Compressor Time Delay Control	RXMD-B01
		High Pressure Control	RXAB-A07
		Low Pressure Control	RXAC-A07



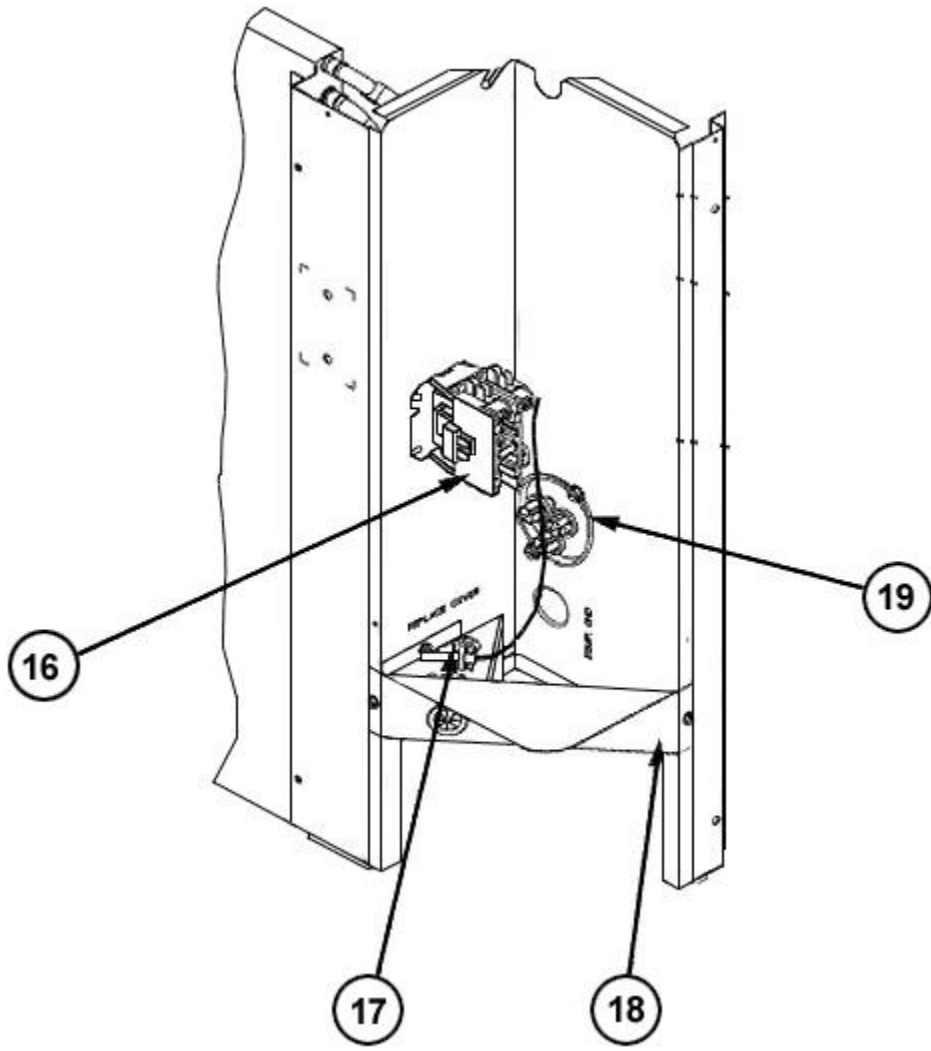
**Valve Mounting  
Panel Detail**

Exploded View





Valve Mounting Detail



Control Box

# NOTES

Stk It is recommended that stock be maintained for this part.  
N/A Not Applicable