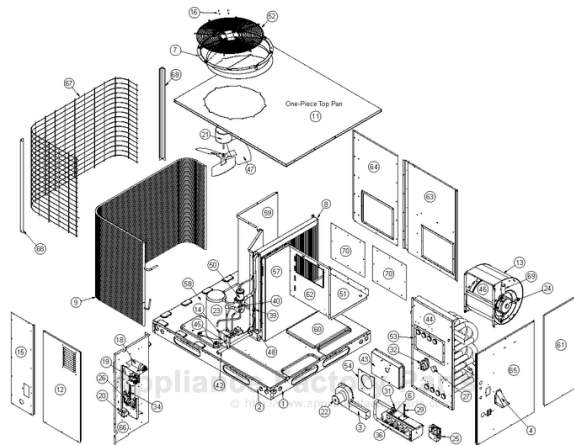


This Owner's Manual is provided and hosted by [Appliance Factory Parts](http://Appliance Factory Parts).



# COMFORT-AIRE TGRG48961E Owner's Manual

[Shop genuine replacement parts for COMFORT-AIRE  
TGRG48961E](#)



HEAT CONTROLLER, INC.

Specifications & illustrations subject to change without notice or incurring obligations.  
Jackson, MI | Printed in U.S.A. (10/12)



[Find Your COMFORT-AIRE HVAC Parts - Select From 1486 Models](#)

----- Manual continues below -----

## REPLACEMENT PARTS LIST

**Single Package Gas Heating / Electric Cooling  
13 SEER, Single Phase Models  
TGRG Series**



### IMPORTANT

- This document is primarily intended to assist qualified individuals experienced in the proper repair or servicing of this appliance. Only factory authorized parts or accessory kits may be used with this product. Improper installation, service, adjustment, or maintenance may cause explosion, fire, electrical shock or other hazardous conditions which may result in personal injury or property damage.
- Some local codes require licensed installation / service personnel to service this type of equipment. Under no circumstances should the equipment owner attempt to install parts or service this equipment. Failure to comply with this warning could result in property damage, personal injury, or death.

## TGRG Single Package Gas Heating / Electric Cooling Units 13 SEER, Single Phase Models

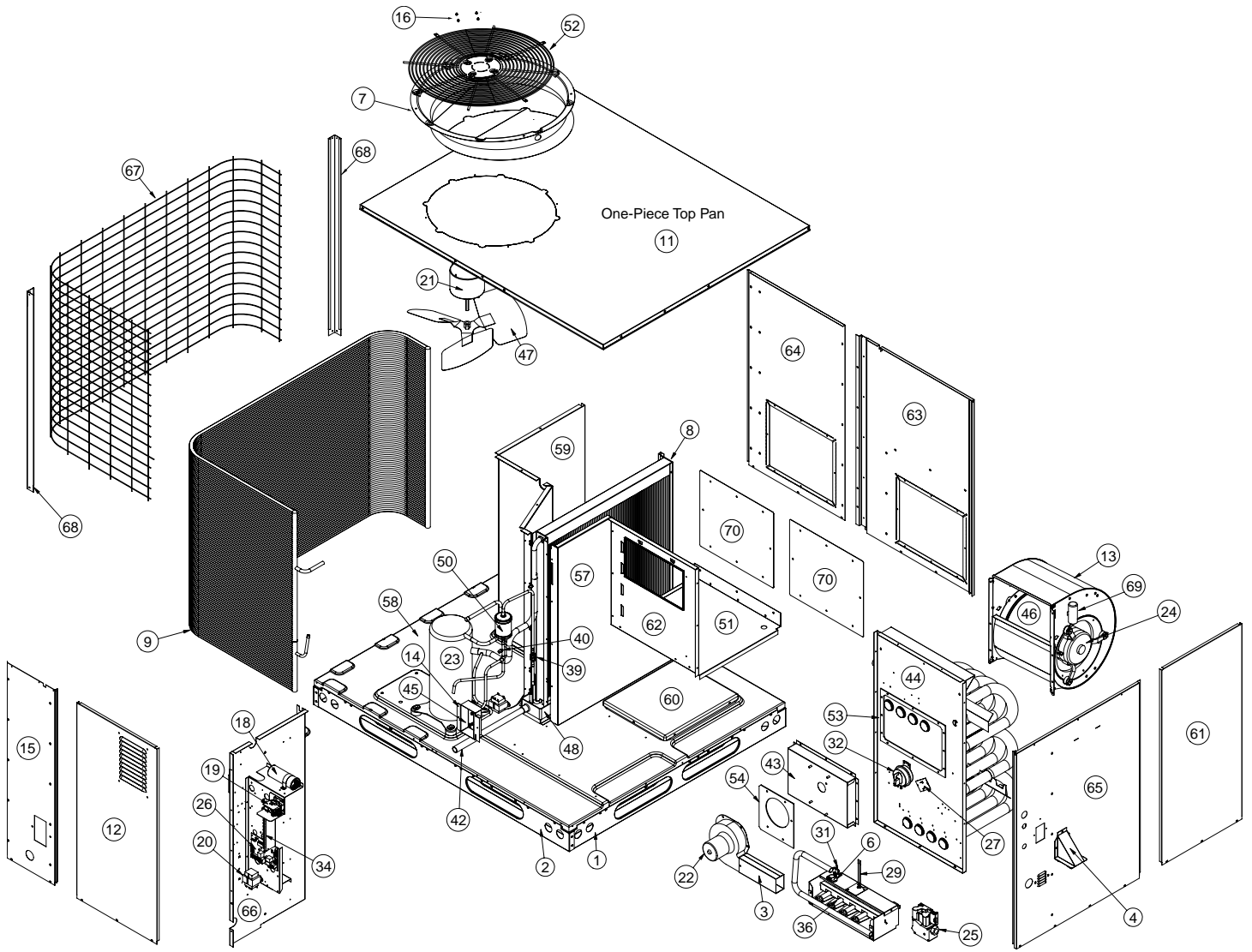
| ITEM | DESCRIPTION                                    | TGRG<br>24451E | TGRG<br>24721E | TGRG<br>30451E | TGRG<br>30721E | TGRG<br>36721E | TGRG<br>36961E | TGRG<br>42961E | TGRG<br>48961E | TGRG<br>601201E |
|------|--|----------------|----------------|----------------|----------------|----------------|----------------|----------------|----------------|-----------------|
|      |  | 921738(Y)      | 921739(Y)      | 921740(Y)      | 921741(Y)      | 921742(Y)      | 921743(Y)      | 921745(Y)      | 921746(Y)      | 921749(Y)       |
| 1    | RAIL, BASE, SHORT                              | 277551R        | 277551R        | 277551R        | 277551R        | 277551R        | 277551R        | 277551R        | 277551R        | 277551R         |
| 2    | RAIL, BASE, LONG                               | 277552R        | 277552R        | 277552R        | 277552R        | 277552R        | 277552R        | 277552R        | 277552R        | 277552R         |
| 3    | EXHAUST DUCT ASSY.                             | 263420R        | 263420R        | 263420R        | 263420R        | 263420R        | 263420R        | 263420R        | 263420R        | 263420R         |
| 4    | VENT COVER ASSY.                               | 265040R        | 265040R        | 265040R        | 265040R        | 265040R        | 265040R        | 265040R        | 265040R        | 265040R         |
| 5    | CAP, TOP (NOT SHOWN)                           | 275291R        | 275291R        | 275291R        | 275291R        | 275291R        | 275291R        | 275291R        | 275291R        | 275291R         |
| 6    | LIM, 1/2D, 1S, OR, 320, M, S, F                | 626547R        | 626547R        | 626547R        | 626547R        | 626547R        | 626547R        | 626547R        | 626547R        | 626547R         |
| 7    | DROP-IN ORIFICE                                | 263210R        | 263210R        | 263210R        | 263210R        | 263210R        | 263210R        | 263210R        | 263210R        | 263210R         |
| 8    | COIL, INDOOR                                   | 664692R        | 664692R        | 664692R        | 664692R        | 664692R        | 664692R        | 664693R        | 664693R        | 664694R         |
| 9    | COIL, OUTDOOR                                  | 664669R        | 664669R        | 664669R        | 664669R        | 664669R        | 664669R        | 664667R        | 664667R        | 664668R         |
| 10   | SWITCH, HIGH PRESS. (NOT SHOWN)                | 632473         | 632473         | 632473         | 632473         | 632473         | 632473         | 632473         | 632473         | 632473          |
| 11   | ONE-PIECE TOP PAN KIT                          | M0034730R      | M0034730R      | M0034730R      | M0034730R      | M0034730R      | M0034730R      | M0034730R      | M0034730R      | M0034730R       |
| 12   | SERVICE PANEL ASSY                             | D07241R        | D07241R        | D07241R        | D07241R        | D07241R        | D07241R        | 296638R        | 296638R        | 296639R         |
| 13   | BLOWER HSG ASSY, 9/10X10                       | 297214R        | 297214R        | 297214R        | 297214R        | 297214R        | 297214R        | —              | —              | —               |
|      | BLOWER HSG ASSY, 11X10                         | —              | —              | —              | —              | —              | —              | 297219R        | 297219R        | 297219R         |
| 14   | SERVICE BRACKET                                | 298551R        | 298551R        | 298551R        | 298551R        | 298551R        | 298551R        | 298551R        | 298551R        | 298551R         |
| 15   | PANEL, FRONT                                   | 298891R        | 298891R        | 298891RR       | 298891R        | 298891R        | 298891R        | 298892R        | 298892R        | 298893R         |
| 16   | NUT, HEX, BLACK                                | 606261         | 606261         | 606261         | 606261         | 606261         | 606261         | 606261         | 606261         | 606261          |
| 17   | LOCKNUT, SERVICE FITTING (NOT SHOWN)           | 663870         | 663870         | 663870         | 663870         | 663870         | 663870         | 663870         | 663870         | 663870          |
| 18   | CAPACITOR, RUN 40/5/370                        | 01-0084        | 01-0084        | —              | —              | —              | —              | —              | —              | —               |
|      | CAPACITOR, RUN 40/7.5/370                      | —              | —              | 01-0269        | 01-0269        | —              | —              | —              | —              | —               |
|      | CAPACITOR, RUN 45/7.5/370                      | —              | —              | —              | —              | 01-0271        | 01-0271        | 01-0271        | —              | —               |
|      | CAPACITOR, RUN 70/7.5/370                      | —              | —              | —              | —              | —              | —              | —              | 01-0278        | —               |
|      | CAPACITOR, RUN 80/7.5/370                      | —              | —              | —              | —              | —              | —              | —              | —              | 01-0279         |
| 19   | CONTACTOR, 1 POLE 30A                          | 624712         | 624712         | 624712         | 624712         | —              | —              | —              | —              | —               |
|      | CONTACTOR, 1 POLE 40A                          | —              | —              | —              | —              | 624713         | 624713         | 624713         | —              | —               |
|      | CONTACTOR, 1 POLE 50A                          | —              | —              | —              | —              | —              | —              | —              | 624714         | 624714          |
| 20   | TRANSFORMER 40 VA                              | 622336         | 622336         | 622336         | 622336         | 622336         | 622336         | 622336         | 622336         | 622336          |
| 21   | MOTOR, OUTDOOR FAN                             | 622080R        | 622080R        | —              | —              | —              | —              | —              | —              | —               |
|      |  | —              | —              | 621990R        | 621990R        | 621990R        | 621990R        | 621990R        | 621990R        | —               |
|      |  | —              | —              | —              | —              | —              | —              | —              | —              | 621740R         |
| 22   | INDUCER MOTOR                                  | 903162         | 903162         | 903162         | 903162         | 903162         | 903162         | 903162         | 903162         | 903162          |
| 23   | COMPRESSOR, ZP21K5E                            | 919606         | 919606         | —              | —              | —              | —              | —              | —              | —               |
|      | COMPRESSOR, ZP25K5E                            | —              | —              | 918869         | 918869         | —              | —              | —              | —              | —               |
|      | COMPRESSOR, ZP31K5E                            | —              | —              | —              | —              | 918870         | 918870         | —              | —              | —               |
|      | COMPRESSOR, ZP39K5E                            | —              | —              | —              | —              | —              | —              | 919607         | —              | —               |
|      | COMPRESSOR, ZP42K5E                            | —              | —              | —              | —              | —              | —              | —              | 918872         | —               |
|      | COMPRESSOR, ZP54K5E                            | —              | —              | —              | —              | —              | —              | —              | —              | 918873          |
| 24   | MTR, BLOWER, PSC (2 & 2.5 TON)                 | 913357         | 913357         | 913357         | 913357         | —              | —              | —              | —              | —               |
|      | MTR, BLOWER, PROG, 1/2 HP (3 TON)              | —              | —              | —              | —              | M0009014R      | M0009014R      | —              | —              | —               |
|      | MTR, BLOWER, PROG, 1/2 HP (3.5 TON)            | —              | —              | —              | —              | —              | —              | M0009006R      | —              | —               |
|      | MTR, BLOWER, PROG, 3/4 HP (4 TON)              | —              | —              | —              | —              | —              | —              | —              | M0009003R      | —               |
|      | MTR, BLOWER, PROG, 1 HP (5 TON)                | —              | —              | —              | —              | —              | —              | —              | —              | M0009009R       |
| 25   | GAS VALVE                                      | 904081         | 904081         | 904081         | 904081         | 904081         | 904081         | 904081         | 904081         | 904081          |
| 26   | CONTROL BOARD KIT                              | 903106         | 903106         | 903106         | 903106         | 919943         | 919943         | 919943         | 919943         | 919943          |
| 27   | SWITCH, LIMIT (180/160)                        | 626434R        | —              | 624434R        | —              | —              | —              | —              | —              | —               |
|      | SWITCH, LIMIT (170/150)                        | —              | 626423R        | —              | 626423R        | 626423R        | —              | —              | —              | —               |
|      | SWITCH, LIMIT (165/145)                        | —              | —              | —              | —              | —              | 626432R        | 626432R        | 626432R        | 626432R         |
| 28   | FUSE, 3-AMP (NOT SHOWN)                        | 632261         | 632261         | 632261         | 632261         | 632261         | 632261         | 632261         | 632261         | 632261          |
| 29   | IGNITOR - 208/230                              | 903179         | 903179         | 903179         | 903179         | 903179         | 903179         | 903179         | 903179         | 903179          |
| 30   | SWITCH, LOW PRESS. - SELECT MODELS (NOT SHOWN) | 632393R        | 632393R        | 632393R        | 632393R        | 632393R        | 632393R        | 632393R        | 632393R        | 632393R         |
| 31   | SENSOR, FLAME                                  | 903600         | 903600         | 903600         | 903600         | 903600         | 903600         | 903600         | 903600         | 903600          |

Please specify the correct Model No., Serial No, and Part No.(s) when ordering parts from the nearest authorized dealer or service center.

## TGRG Single Package Gas Heating / Electric Cooling Units 13 SEER, Single Phase Models

| ITEM | DESCRIPTION                                 | TGRG<br>24451E | TGRG<br>24721E | TGRG<br>30451E | TGRG<br>30721E | TGRG<br>36721E | TGRG<br>36961E | TGRG<br>42961E | TGRG<br>48961E | TGRG<br>D048K120* |
|------|---|----------------|----------------|----------------|----------------|----------------|----------------|----------------|----------------|-------------------|
|      |   | 921738(Y)      | 921739(Y)      | 921740(Y)      | 921741(Y)      | 921742(Y)      | 921743(Y)      | 921745(Y)      | 921746(Y)      | 921747(Y)         |
| 32   | SWITCH, PRESS., Norm. Open 0.77" W.C.       | 632424R        | 632424R        | 632424R        | 632424R        | 632424R        | 632424R        | 632424R        | 632424R        | 632424R           |
| 33   | SET OF WIRES (NOT SHOWN)                    | M0077112R      | M0077112R      | M0077112R      | M0077112R      | M0077116R      | M0077116R      | M0077110R      | M0077110R      | M0077110R         |
| 34   | BLOCK, TERMINAL                             | 632539         | 632539         | 632539         | 632539         | 632539         | 632539         | 632539         | 632539         | 632539            |
| 35   | PLUG, MOLDED HV (NOT SHOWN)                 | 634715         | 634715         | 634715         | 634715         | 634715         | 634715         | 634715         | 634715         | 634715            |
| 36   | BURNER, INSHOT                              | 660812         | 660812         | 660812         | 660812         | 660812         | 660812         | 660812         | 660812         | 660812            |
| 37   | ORIFICE, MAIN BURNER, #43 DRILL (NOT SHOWN) | 661043R        | 661043R        | 661043R        | 661043R        | 661043R        | 661043R        | 661043R        | 661043R        | 661043R           |
| 38   | CORE, CHARGING PORT (NOT SHOWN)             | 662103R        | 662103R        | 662103R        | 662103R        | 662103R        | 662103R        | 662103R        | 662103R        | 662103R           |
| 39   | DISTRIBUTOR ASSY, (.057 RESTRICTOR)         | 664518         | 664518         | —              | —              | —              | —              | —              | —              | —                 |
|      | DISTRIBUTOR ASSY, (.062 RESTRICTOR)         | —              | —              | 664595         | 664595         | —              | —              | —              | —              | —                 |
|      | DISTRIBUTOR ASSY, (.068 RESTRICTOR)         | —              | —              | —              | —              | 664689         | 664689         | —              | —              | —                 |
|      | DISTRIBUTOR ASSY, (.074 RESTRICTOR)         | —              | —              | —              | —              | —              | —              | 664599         | —              | —                 |
|      | DISTRIBUTOR ASSY, (.075 RESTRICTOR)         | —              | —              | —              | —              | —              | —              | —              | 664775         | 664775            |
|      | TXV   | —              | —              | —              | —              | —              | —              | —              | —              | —                 |
| 40   | FITTING, ACCESS                             | 663812R        | 663812R        | 663812R        | 663812R        | 663812R        | 663812R        | 663812R        | 663812R        | 663812R           |
| 41   | CAP, SERVICE PORT, BRASS (NOT SHOWN)        | 663818R        | 663818R        | 663818R        | 663818R        | 663818R        | 663818R        | 663818R        | 663818R        | 663818R           |
| 42   | DRAIN TUBE ASSY                             | 663833         | 663833         | 663833         | 663833         | 663833         | 663833         | 663833         | 663833         | 663833            |
| 43   | COLLECTOR PAN ASSY, W/O RETAINER            | M0074322R      | D10322R        | M0074322R      | D10322R        | D10322R        | M0074321R      | D10323R        | D10323R        | D10323R           |
| 44   | HEAT EXCH. PANEL ASSY.                      | 293336R        | 293335R        | 293336R        | 293335R        | 293335R        | D10303R        | D10306R        | D10306R        | D10307R           |
| 45   | FITTING, PANEL MOUNT                        | 664696         | 664696         | 664696         | 664696         | 664696         | 664696         | 664696         | 664696         | 664696            |
| 46   | WHEEL, BLOWER 10 X 10                       | 667207R        | 667207R        | 667207R        | 667207R        | 667207R        | 667207R        | —              | —              | —                 |
|      | WHEEL, BLOWER 11 X 10                       | —              | —              | —              | —              | —              | —              | 667260R        | 667260R        | 667260R           |
| 47   | FAN BLADE                                   | 667278R        | 667278R        | 667278R        | 667278R        | 667278R        | 667278R        | 667356R        | 667278R        | 667278R           |
| 48   | PAN, DRAIN                                  | 669190R        | 669190R        | 669190R        | 669190R        | 669190R        | 669190R        | 669190R        | 669190R        | 669190R           |
| 49   | REPLACEMENT HAIL GUARD KIT (NOT SHOWN)      | 917206         | 917206         | 917206         | 917206         | 917206         | 917206         | 917206         | 917206         | 917206            |
| 50   | DRIER, FILTER, UNIFLOW, 8 IN <sup>3</sup>   | 669764         | 669764         | 669764         | 669764         | 669764         | 669764         | 669764         | 669764         | 669764            |
| 51   | BLOWER SHELF                                | 283931R        | 283931R        | 283931R        | 283931R        | 283931R        | 283931R        | 283932         | 283932R        | 283932R           |
| 52   | GRILLE, TOP-BLACK                           | 669404R        | 669404R        | 669404R        | 669404R        | 669404R        | 669404R        | 669404R        | 669404R        | 669404R           |
| 53   | GASKET, COLLECTOR PAN                       | 689506R        | 689506R        | 689506R        | 689506R        | 689506R        | 689506R        | 689506R        | 689506R        | 689506R           |
| 54   | GASKET, INDUCER                             | 689518R        | 689518R        | 689518R        | 689518R        | 689518R        | 689518R        | 689518R        | 689518R        | 689518R           |
| 56   | PAINT, TOUCH-UP, STERLING GREY (NOT SHOWN)  | 903598         | 903598         | 903598         | 903598         | 903598         | 903598         | 903598         | 903598         | 903598            |
| 57   | PANEL, HEAT EX. DIVIDER                     | D05071R        | D05071R        | D05071R        | D05071R        | D05071R        | D05071R        | D05072R        | D05072R        | D05072R           |
| 58   | BOTTOM PAN ASSY.                            | D05480R        | D05480R        | D05480R        | D05480R        | D05480R        | D05480R        | D05480R        | D05480R        | D05480R           |
| 59   | DIVIDER PANEL ASSY.                         | D05505R        | D05505R        | D05505R        | D05505R        | D05505R        | D05505R        | D05502R        | D05502R        | D05502R           |
| 60   | DUCT CAP ASSY.                              | D05530R        | D05530R        | D05530R        | D05530R        | D05530R        | D05530R        | D05530R        | D05530R        | D05530R           |
| 61   | BLOWER PANEL ASSY                           | D05548R        | D05548R        | D05548R        | D05548R        | D05548R        | D05548R        | D05542R        | D05542R        | D05542R           |
| 62   | PANEL, BLOWER DISCHARGE                     | 281493R        | 281493R        | 281493R        | 281493R        | 281493R        | 281493R        | 281493R        | 281493R        | 281493R           |
| 63   | SUPPLY PANEL ASSY                           | D05558R        | D05558R        | D05558R        | D05558R        | D05558R        | D05558R        | D05552R        | D05552R        | D05552R           |
| 64   | RETURN PANEL ASSY                           | D05567R        | D05567R        | D05567R        | D05567R        | D05567R        | D05567R        | D05565R        | D05565R        | D05565R           |
| 65   | CORNER PANEL ASSY.                          | D05630R        | D05630R        | D05630R        | D05630R        | D05630R        | D05630R        | D05628R        | D05628R        | D05628R           |
| 66   | PANEL, CLOSE-OFF ASSY.                      | D05693R        | D05693R        | D05693R        | D05693R        | D05693R        | D05693R        | D05682R        | D05682R        | D05682R           |
| 67   | GUARD, COIL (FORMED)                        | 2A8452R        | 2A8452R        | 2A8452R        | 2A8452R        | 2A8452R        | 2A8452R        | 2A8453R        | 2A8453R        | 2A8453R           |
| 68   | CORNER POST                                 | D09994R        | D09994R        | D09994R        | D09994R        | D09994R        | D09994R        | D09996R        | D09996R        | D09996R           |
| 69   | BLOWER MTR CAPACITOR                        | 01-0024        | 01-0024        | 01-0024        | 01-0024        | —              | —              | —              | —              | —                 |
| 70   | DUCT CAP ASSEMBLY                           | 283101R        | 283101R        | 283101R        | 283101R        | 283101R        | 283101R        | 283101R        | 283101R        | 283101R           |

Please specify the correct Model No., Serial No, and Part No.(s) when ordering parts from the nearest authorized dealer or service center.



# HEAT CONTROLLER, INC.

Specifications & illustrations subject to change without notice or incurring obligations.  
 Jackson, MI | Printed in U.S.A. (10/12)



7095280 (NEW)