

REPLACEMENT PARTS LIST

Single Package Air Conditioner

TARG Series

13 SEER Models

| ITEM | DESCRIPTION | TARG24001E | TARG30001E | TARG36001E | TARG42001E | TARG48001E | TARG60001E |
|------|--|------------|------------|------------|------------|------------|------------|
| | | 921439(Y)A | 921440(Y)A | 921441(Y)A | 921442(Y)A | 921443(Y)A | 921444(Y)A |
| 1 | SET OF WIRES (NOT SHOWN) | M0088701R | M0088701R | M0088702R | M0088703R | M0088703R | M0088703R |
| 2 | REPL. HAIL GUARD KIT (NOT SHOWN) | 917206 | 917206 | 917206 | 917206 | 917206 | 917206 |
| 3 | REAR PANEL | D03461R | D03461R | D03465R | D03465R | D03465R | D03463R |
| 4 | DRAIN CHANNEL | D03290R | D03290R | D03290R | D03290R | D03290R | D03290R |
| 5 | CONDENSOR COIL, FORMED | M0074506R | M0074506R | M0074515R | M0074515R | M0074515R | M0089401R |
| 6 | CONDENSOR GRILL, FORMED (Premium Models Only) | 2A8153R | 2A8153R | 2A8154R | 2A8154R | 2A8154R | 2A8155R |
| 7 | DIVIDER PANEL ASSY | D03441R | D03441R | D03443R | D03443R | D03443R | D03444R |
| 8 | CORNER POST | D09991R | D09991R | D09993R | D09993R | D09993R | D09995R |
| 9 | COVER, COMPRESSOR | D02891R | D02891R | D02893R | D02893R | D02893R | D02894R |
| 10 | TOP PAN ASSY, LEFT | D03570R | D03570R | D03570R | D03570R | D03570R | D03570R |
| 11 | TOP PAN ASSY, RIGHT | D07090R | D07090R | D07090R | D07090R | D07090R | D07090R |
| 12 | FAN BLADE | 667356R | 667356R | 667355R | 667356R | 667356R | 667356R |
| 13 | CONDENSER MOTOR | 622080R | 622080R | 622164R | 621990R | 621990R | 621990R |
| 14 | FAN GRILL, BLACK | 669404R | 669404R | 669404R | 669404R | 669404R | 669404R |
| 15 | HARD START ASSEMBLY (NOT SHOWN) | M0074002R | M0074002R | M0074003R | — | — | — |
| 16 | ACORN NUT, BLACK | 606261 | 606261 | 606261 | 606261 | 606261 | 606261 |
| 17 | FILTER DRIER | 669764 | 669764 | 669764 | 669764 | 669764 | 669764 |
| 18 | DRAIN PAN | 669187R | 669187R | 669187R | 669187R | 669187R | 669187R |
| 19 | COMPRESSOR | 622624R | 622625R | 622508R | 622585R | 622587R | 622588R |
| 20 | BLOWER DIVIDER ASSY | D03486R | D03486R | D03483R | D03483R | D03483R | D03484R |
| 21 | BASE RAIL | D03420 | D03420 | D03420 | D03420 | D03420 | D03420 |
| 22 | "P"-TRAP | 669211R | 669211R | 669211R | 669211R | 669211R | 669211R |
| 23 | BLOWER TIME DELAY RELAY | 621931 | 621931 | 621931 | 621931 | 621931 | 621931 |
| 24 | TRANSFORMER | 622338 | 622338 | 622338 | 622338 | 622338 | 622338 |
| 25 | CAPACITOR, DUAL | 620765 | 620907 | 620765 | 621153 | 621944 | 621944 |
| 26 | PANEL, CORNER | D04361R | D04361R | D04363R | D04363R | D04363R | D04364R |
| 27 | COVER, CONTROL BOX | D02871R | D02871R | D02873R | D02873R | D02873R | D02874R |
| 28 | BLOWER PANEL ASSY | D03521R | D03521R | D03523R | D03523R | D03523R | D03524R |
| 29 | BLOWER TRANSITION BOX | D03350 | D03350 | D03350 | D03350 | D03350 | D03350 |
| 30 | BLOWER WHEEL, 10 X 8 | — | — | 667037R | 667037R | 667037R | 667037R |
| | BLOWER WHEEL 9 X 7.5 | 667294R | 667294R | — | — | — | — |
| 31 | FOOT, BLOWER | 262970 | 262970 | 262970 | 262970 | 262970 | 262970 |
| 32 | CONTACTOR | 624712 | 624712 | 624712 | 624713 | 624713 | 624714 |
| 33 | MOTOR BLOWER, DM2XF | M0088901 | M0088901 | M0088901 | M0088902 | M0088902 | M0088903 |
| 34 | BLOWER HOUSING | D07482R | D07482R | D07482R | D07482R | D07482R | D07482R |
| 35 | COVER, BLOWER BOX | D03340 | D03340 | D03340 | D03340 | D03340 | D03340 |
| 36 | CONTROL PANEL | 271791 | 271791 | 271793 | 271793 | 271793 | 271794 |
| 37 | EVAPORATOR COIL | 664858R | 664703R | 664685R | 664857R | 664685R | 664686R |
| 38 | BOTTOM PAN | D03430R | D03430R | D03430R | D03430R | D03430R | D03430R |
| 39 | DRAIN TUBE | 663713 | 663713 | 663713 | 663713 | 663713 | 663713 |
| 40 | FUSE, 3-AMP (NOT SHOWN) | 632261 | 632261 | 632261 | 632261 | 632261 | 632261 |
| 41 | ANTI-VIBRATION TUBE (NOT SHOWN) | 669931 | 669931 | 669931 | — | — | — |
| 42 | SWITCH, HIGH PRESSURE (NOT SHOWN) | 632473 | 632473 | 632473 | 632473 | 632473 | 632473 |
| 43 | COIL CLOSE OFF, BOTTOM (NOT SHOWN) | 2C1411 | 2C1411 | 2C1411 | 2C1411 | 2C1411 | 2C1411 |
| | COIL CLOSE OFF, TOP (NOT SHOWN) | 2C1421 | 2C1421 | 2C1421 | 2C1421 | 2C1421 | 2C1421 |
| | COIL CLOSE OFF, BACK (NOT SHOWN) | 2C1434 | 2C1434 | 2C1431 | 2C1431 | 2C1431 | 2C1432 |
| | COIL CLOSE OFF, FRONT RT (NOT SHOWN) | 2C1444 | 2C1444 | 2C1441 | 2C1441 | 2C1441 | 2C1442 |
| | COIL CLOSE OFF, FRONT LT (NOT SHOWN) | 2C1454 | 2C1454 | 2C1451 | 2C1451 | 2C1451 | 2C1452 |

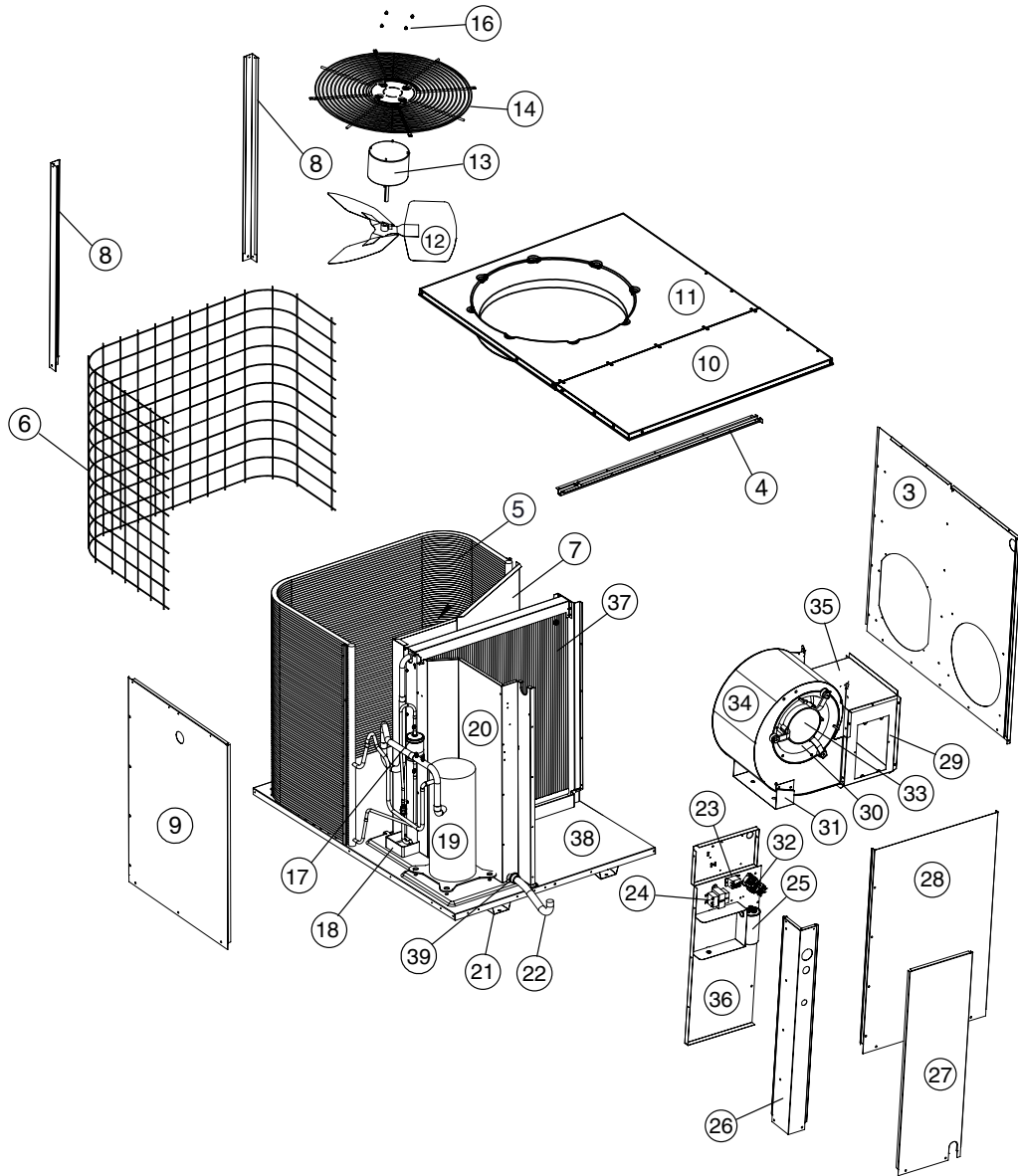
Please specify the correct Model No., Serial No. and part number(s) when ordering parts from the nearest authorized dealer or service center.

TARG Series Single Package Air Conditioner

| ITEM | DESCRIPTION | TARG24001E | TARG30001E | TARG36001E | TARG42001E | TARG48001E | TARG60001E |
|------|--|------------|------------|------------|------------|------------|------------|
| | | 921439(Y)A | 921440(Y)A | 921441(Y)A | 921442(Y)A | 921443(Y)A | 921444(Y)A |
| 44 | MOLDED PLUG, COMPRESSOR (NOT SHOWN) | 634797 | 634797 | 634797 | 634660 | 634660 | 634660 |
| 45 | DISTRIBUTOR ASSY (NOT SHOWN) | 664758 | 664758 | 664766 | 664663 | 664778 | 664782 |
| 46 | CORE, CHARGING PORT (NOT SHOWN) | 662103 | 662103 | 662103 | 662103 | 662103 | 662103 |
| 47 | FITTING, ACCESS (NOT SHOWN) | 663812 | 663812 | 663812 | 663812 | 663812 | 663812 |
| 48 | CAP, SERVICE PORT, BRASS (NOT SHOWN) | 663818 | 663818 | 663818 | 663818 | 663818 | 663818 |
| 49 | **PORT, HI FLOW, 3/8" (NOT SHOWN) | 664329 | 664329 | 664329 | 664329 | 664329 | 664329 |
| 50 | **CORE, PORT, HI FLOW, BRASS (NOT SHOWN) | 664331 | 664331 | 664331 | 664331 | 664331 | 664331 |
| 51 | ELBOW, 3/4" MPT (NOT SHOWN) | 669184 | 669184 | 669184 | 669184 | 669184 | 669184 |
| 52 | PAINT, TOUCH-UP, (NOT SHOWN) | 903598 | 903598 | 903598 | 903598 | 903598 | 903598 |

Please specify the correct Model No., Serial No. and part number(s) when ordering parts from the nearest authorized dealer or service center.

****NOTE:** This item was discontinued after 9/15/11. This is not interchangeable with Items #46 & #47.



HEAT CONTROLLER, INC.

Specifications & illustrations subject to change without notice or incurring obligations.

Jackson, MI | Printed in U.S.A. (02/13)



7095210 (NEW)