



**FRIEDRICH**

1 8 8 3

# Single Zone Air Conditioner SVC MANUAL(Exploded View)

## DUCTLESS SPLIT SYSTEMS

### **CAUTION**

Before Servicing the unit, read the safety precautions in General SVC manual.  
Only for authorized service personnel.

MODEL : MC24Y3J  
MC36Y3J

THE EXPERTS IN ROOM AIR CONDITIONING

960-920-11

# 1. Specification

## Indoor

Model Name				MC24Y3J	MC36Y3J
Power Supply		V / Ø / Hz		1 / 208-230 / 60	1 / 208-230 / 60
Casing Color		-		-	-
Dimensions	Body	W x H x D	mm	204 x 840 x 840	288 x 840 x 840
		W x H x D	inch	8-1/32 x 33-1/16 x 33-1/16	11-11/32 x 33-1/16 x 33-1/16
Net Weight	Body		kg (lbs)	20.5 (45.2)	24.6 (54.2)
Heat Exchanger	#1_(Row x Column x Fins per inch) x No.		-	(1 x 8 x 19) x 1	(1 x 12 x 21) x 1
	#2_(Row x Column x Fins per inch) x No.		-	(1 x 8 x 19) x 1	(1 x 12 x 21) x 1
	Face Area		m <sup>2</sup> (ft <sup>2</sup> )	0.168 (1.81)	0.252 (2.71)
Fan	Type		-	Turbo Fan	Turbo Fan
	Air Flow Rate	H / M / L	m <sup>3</sup> /min	17.0 / 15.0 / 13.0	30.0 / 28.0 / 26.0
		H / M / L	ft <sup>3</sup> /min	600 / 530 / 459	1,060 / 989 / 918
Fan Motor	Type		-	BLDC	BLDC
	Output		W x No.	60 x 1	124 x 1
	Power Input		W x No.	-	-
	Running Current		A	0.60 x 1	0.72 x 1
Dehumidification Rate			ℓ/h(pts/h)	2.4 (5.1)	3.6 (7.7)
Sound Pressure Level		H / M / L	dB(A)	38 / 36 / 34	46 / 44 / 40
Sound Power Level	Cooling	H / M / L	dB(A)	-	-
Piping Connections	Liquid		mm(inch)	Ø 9.52 (3/8)	Ø 9.52 (3/8)
	Gas		mm(inch)	Ø 15.88 (5/8)	Ø 15.88 (5/8)
	Drain (O.D. / I.D.)		mm	Ø 32.0 / 25.5	Ø 32.0 / 25.5
Safety Devices			-	Fuse	Fuse
Power and Communication Cable (included Earth)			No. x mm <sup>2</sup> (AWG)	4C x 0.75 (18)	4C x 0.75 (18)
Decoration Panel	Model Name		-	PT-UMC1	PT-UMC1
	Casing Color		-	Morning Fog	Morning Fog
	Dimensions	W x H x D	mm	22 x 950 x 950	22 x 950 x 950
		W x H x D	inch	7/8 x 37-13/32 x 37-13/32	7/8 x 37-13/32 x 37-13/32
Net weight		kg (lbs)	5 (11.0)	5 (11.0)	

### Note:

1. All data are based on the following conditions:

- Cooling Temperature : Indoor 27°C(80.6°F) DB / 19°C(66.2°F) WB  
Outdoor 35°C(95°F) DB / 24°C(75.2°F) WB
- Heating Temperature : Indoor 20°C(68°F) DB / 15°C(59°F) WB  
Outdoor 7°C(44.6°F) DB / 6°C(42.8°F) WB
- Piping Length : Interconnected Pipe Length = 7.5m
- Difference Limit of Elevation (Outdoor ~ Indoor Unit) is Zero.

2. Wiring cable size must comply with the applicable local and national code.

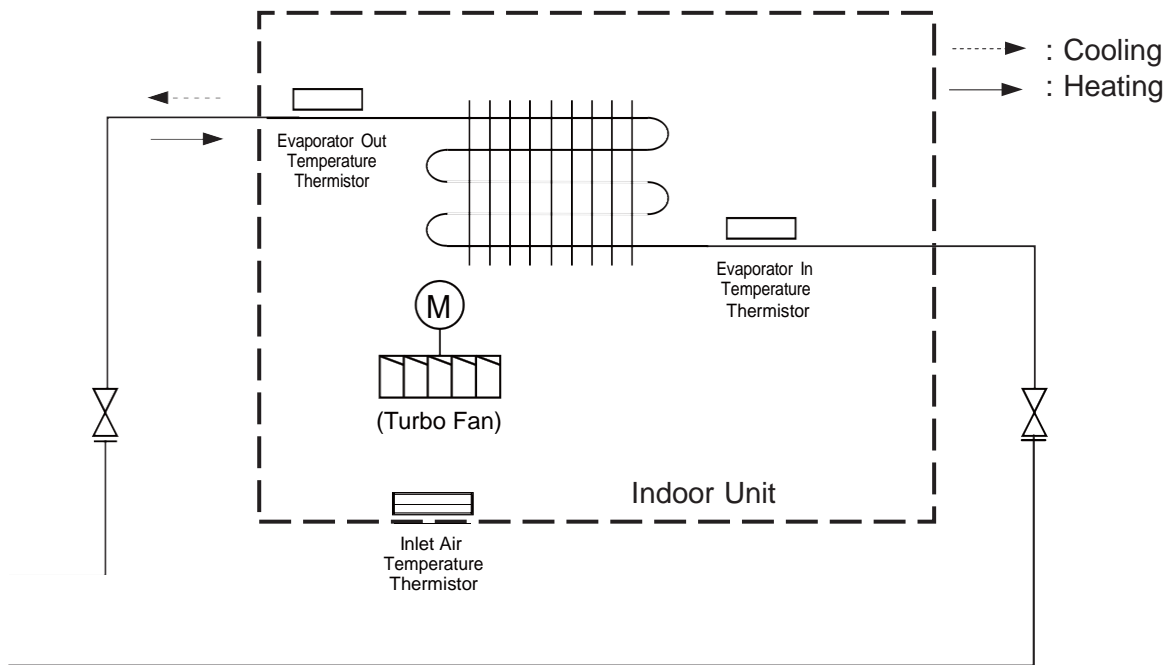
3. Due to our policy of innovation some specifications may be changed without notification.

4. Sound Level Values are measured at Anechoic chamber.

Therefore, these values can be increased (maximum 3dB(A)) owing to ambient conditions during operation.

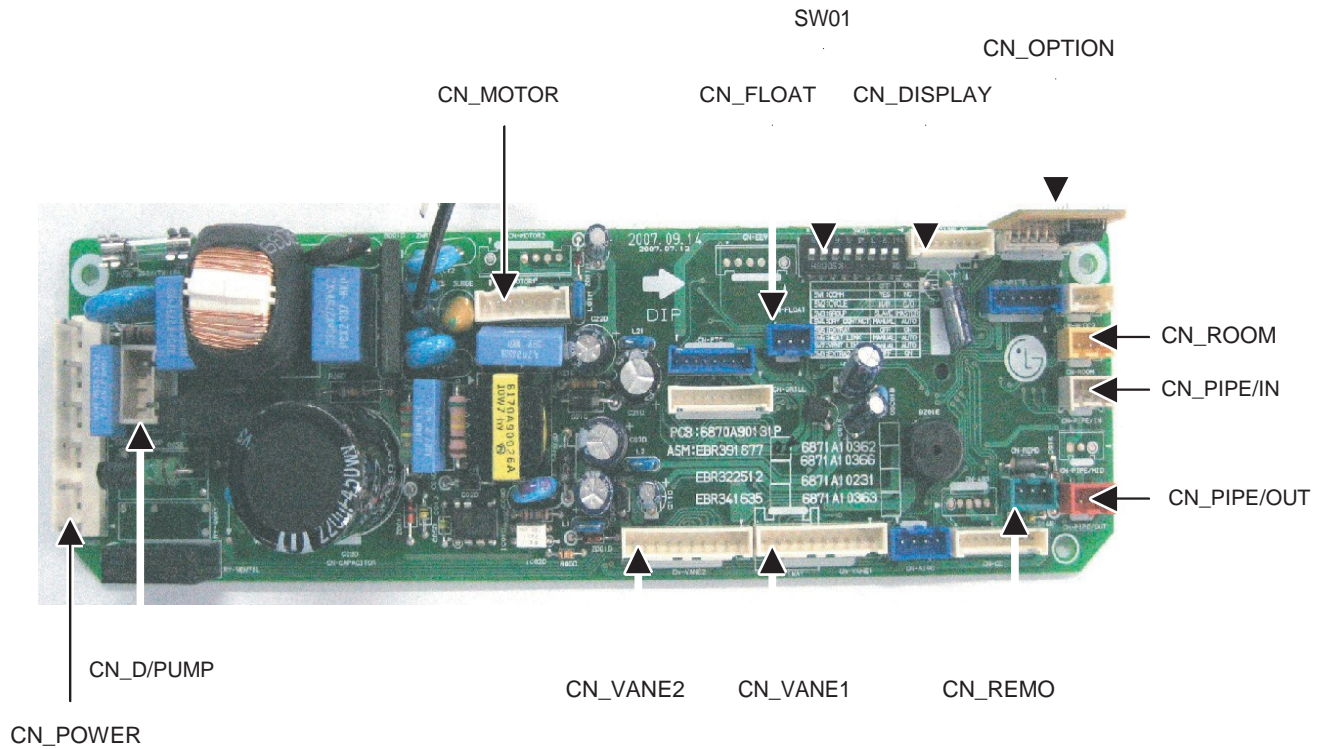
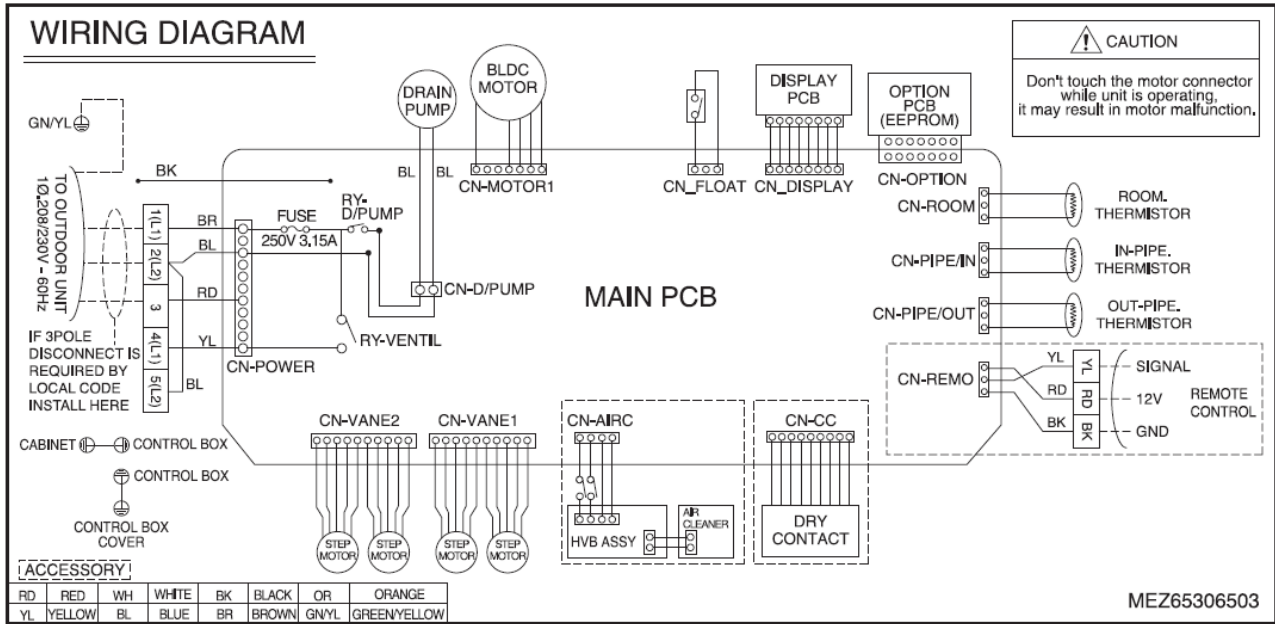
Conversion Formula
kW = Btu/h x 0.002931
cfm = CMM x 35.3

## 2. Piping Diagrams



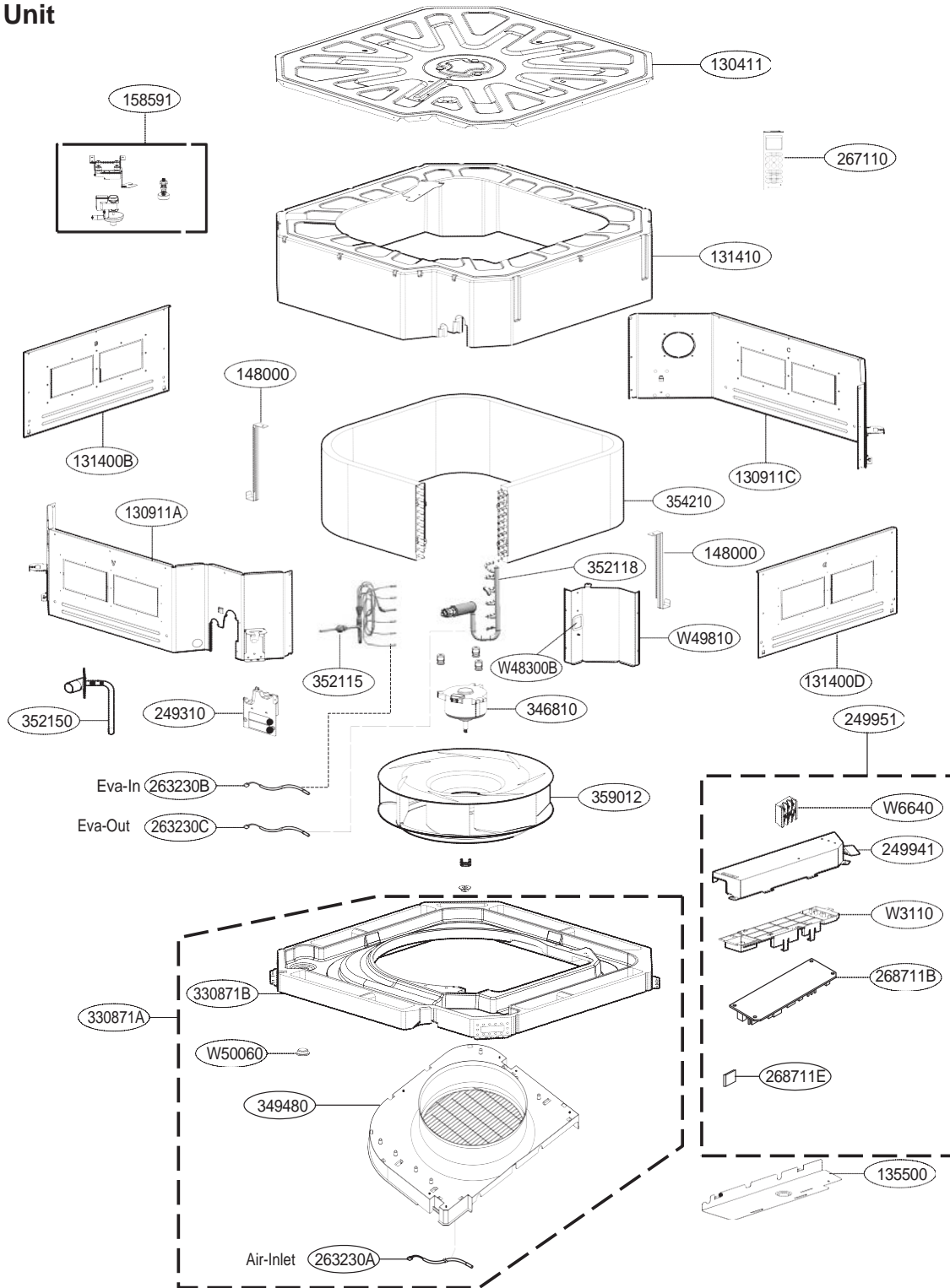
Description	PCB Connector
Inlet Air Temperature Thermistor	CN-ROOM
Evaporator In Temperature Thermistor	CN-PIPE/IN
Evaporator Out Temperature Thermistor	CN-PIPE/OUT

### 3. Wiring Diagrams



## 4. Exploded View

### Indoor Unit



Location No.	Description	Sensor Information	Housing Color
263230A	Thermistor1(CN_ROOM)	Air-Inlet	Orange
263230B	Thermistor2(CN_PIPE/IN)	Eva-in	White
263230C	Thermistor3(CN_PIPE/OUT)	Eva-out	Red

---

**Model: MC24Y3J**

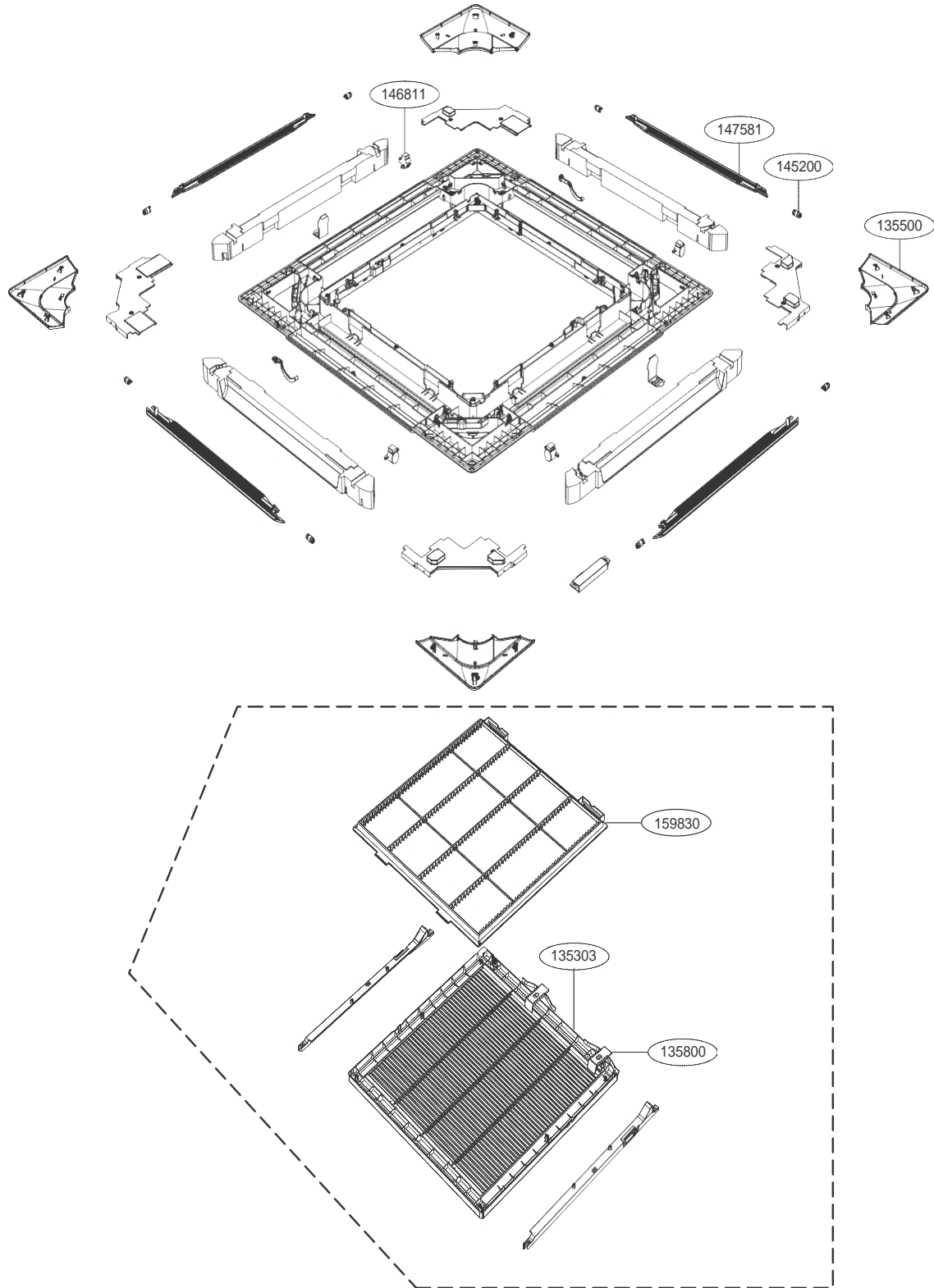
Loc No.	Description	Friedrich Part #
130411	Base Assembly, Indoor	67600501
W48300B	Bush	67606800
131400B	Cabinet	67600802
131400D	Cabinet	67600803
131410	Cabinet Assembly	67600805
130911A	Cabinet Assembly, Indoor	67600811
130911C	Cabinet Assembly, Indoor	67600812
W50060	Cap	67606900
W3110	Case	67600901
249951	Case Assembly, Control(Indoor)	67600928
249941	Case, Control(Indoor)	67600924
W6640	Connector, Terminal Block	67601402
135500	Cover	67601514
354210	Evaporator Assembly, First	67602000
359012	Fan Assembly, Turbo	67602113
249310	Holder Assembly	67602700
352150	Hose Assembly, Drain	67602803
346810	Motor Assembly, DC,Indoor	67603306
346810	Motor, DC	67603333
349480	Orifice	67603604
330871A	Pan Assembly, Drain	67603704
330871B	Pan Assembly, Drain	67603709
268711B	PCB Assembly, Main	67603909
268711E	PCB Assembly, Sub	67603928
158591	Pump Assembly, Water	67604101
267110	Remote Controller Assembly	67604301
148000	Supporter	67604605
W49810	Supporter Assembly	67604612
263230A	Thermistor Assembly, NTC	67604809
263230B	Thermistor Assembly, NTC	67604821
263230C	Thermistor Assembly, NTC	67604822
352118	Tube Assembly, Menifold(Indoor)	67606007

---

**Model: MC36Y3J**

<b>Loc No.</b>	<b>Description</b>	<b>Friedrich Part #</b>
130411	Base Assembly, Indoor	67600500
W48300B	Bush	67606800
131400B	Cabinet	67600800
131400D	Cabinet	67600801
131410	Cabinet Assembly	67600804
130911A	Cabinet Assembly, Indoor	67600810
130911C	Cabinet Assembly, Indoor	67600813
W50060	Cap	67606900
W3110	Case	67600901
249951	Case Assembly, Control(Indoor)	67600912
249941	Case, Control(Indoor)	67600924
W6640	Connector, Terminal Block	67601402
135500	Cover	67601514
354210	Evaporator Assembly, First	67602015
359012	Fan Assembly, Turbo	67602112
249310	Holder Assembly	67602700
352150	Hose Assembly, Drain	67602807
346810	Motor Assembly, DC, Indoor	67603309
349480	Orifice	67603603
330871A	Pan Assembly, Drain	67603705
330871B	Pan Assembly, Drain	67603709
268711B	PCB Assembly, Main	67603909
268711E	PCB Assembly, Sub	67603929
158591	Pump Assembly, Water	67604101
267110	Remote Controller Assembly	67604301
148000	Supporter	67604604
W49810	Supporter Assembly	67604611
263230A	Thermistor Assembly, NTC	67604809
263230B	Thermistor Assembly, NTC	67604821
263230C	Thermistor Assembly, NTC	67604822
352115	Tube Assembly, Evaporator(In)	67605800
352118	Tube Assembly, Manifold(Indoor)	67606000

# Front Panel



Location No.	Sensor Location	Remark
263230A	Air-Inlet	Housing Color : Orange
263230B	Eva-in	Housing Color : White
263230C	Eva-out	Housing Color : Red





**FRIEDRICH**

Friedrich Air Conditioning Co. | 10001 Reunion Place, Suite 500 | San Antonio, TX 78216 | 877.599.5665  
[www.friedrich.com](http://www.friedrich.com)