

This Owner's Manual is provided and hosted by [Appliance Factory Parts](#).



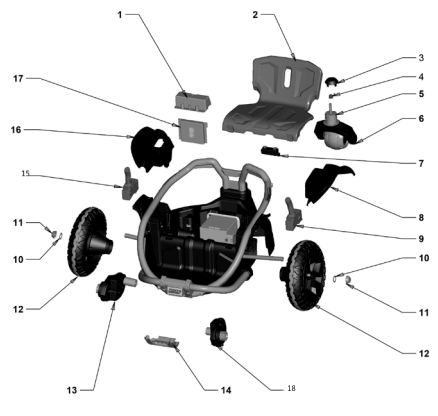
FISHER PRICE DNM22 Owner's Manual

[Shop genuine replacement parts for FISHER PRICE
DNM22](#)



[Find Your FISHER PRICE Ride On Parts - Select From 999 Models](#)

----- Manual continues below -----



DNM22 Wild Thing Power Wheels Advanced	
Age Range:	5 and up
Weight Limit:	100 Lbs
Surfaces:	Hard and Grass Surfaces
Speed:	2-5 MPH Forward 2-2.5 MPH Reverse
Colors:	Pink/Black Body/Wheels
Intro:	2016
Suggested Retail:	\$299.99
Box Dimensions:	31" L X 16" W X 34" H
Warranty:	One Year Vehicle Six Months Battery



Item	Part #	Description	QTY	Part #	Description	QTY
1	3900-4944	Circuit Board Cover (DNM22) (white)	1	3900-4947	Wire Harness w/Plug (DFV03/DNM22)	1
2	3900-4599	Seat for Wild Thing (gray)	1	00801-1869	12 Volt Battery (gray) (1)	1
3	3900-4941	Caster Cap for (DFV03/DNM22)	1	00801-1778	12 Volt Charger w/Probe	1
4	00901-1621	Cap (Retainer: 437)(black)	1	3900-5069	Battery Retainer (DFV03/DNM22)	1
5	3900-4942	Caster Bearing Cap	1	3900-4946	Cap for Seat Spring	1
6	3900-4609	Rear Wheel Assembly for DNM22	1	3900-4940	Joystick Cover Set for DNM22 (pink)	1
7	3900-4939	Seat Switch for (DFV03/DNM22)	1	3900-4966	Rear "L" Caster Axle	1
8	NA	Left Fender	1	3900-4951	Rear Axle for Wild Thing (DNM22)	1
9	3900-4971	Left Joystick/Controller	1	DFV03-5599	Seatbelt Set for Wild Thing (black)	1
10	3900-4911	Washer #10 3/16	2	3900-4603	Hardware Bag for Wild Thing	1
11	3900-4600	Hubcap for Wild Thing (pink)	2	3900-4969	Parts Bag for Wild Thing (DNM22)	1
12	3900-4597	Wheel for Wild Thing (DNM22)	2	3900-4602	Label Sheet for Wild Thing (DNM22)	1
13	3900-4949	Motor Gearbox Assembly (right)	1	3900-4601	Manual for Wild Thing	1
14	3900-4604	Skid Plate for Wild Thing (DNM22)	1	3900-4945	Seat Springs for (DFV03/DNM22)	2
15	3900-4970	Right Joystick/Controller	1	3900-4607	Gearbox for Wild Thing	2
16	NA	Right Fender	1	3900-4608	Motor Pinion 19T for Wild Thing	2
17	3900-4675	Circuit Board for (DFV03/DNM22)	1			
18	3900-4948	Motor Gearbox Assembly (left)	1			

Bold and underlined parts are to be purchased and installed by Service Centers only. These items may not be sold directly to consumers by Service Centers or Fisher-Price.