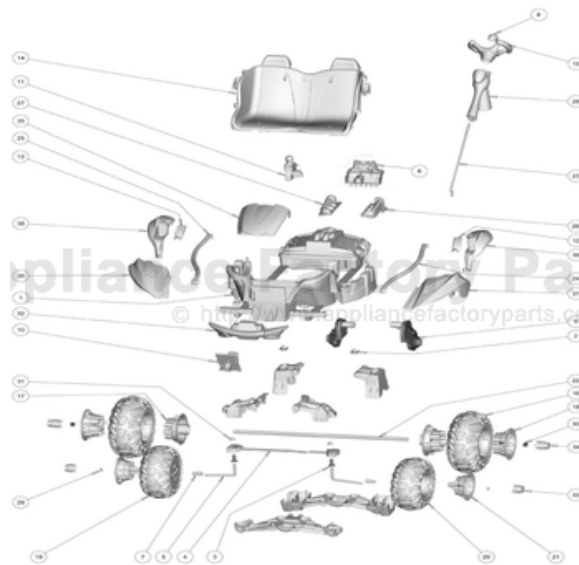


This Owner's Manual is provided and hosted by Appliance Factory Parts.



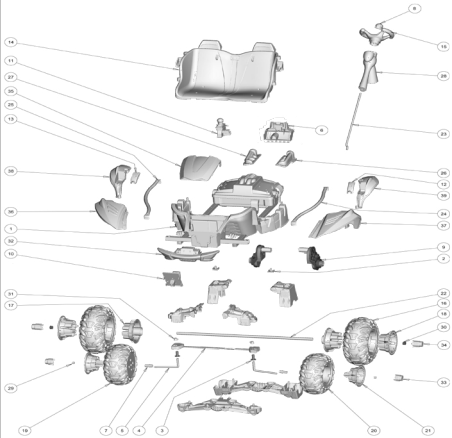
FISHER PRICE CFG09 Owner's Manual

[Shop genuine replacement parts for FISHER PRICE
CFG09](#)



[Find Your FISHER PRICE Ride On Parts - Select From 999 Models](#)

----- Manual continues below -----



CF699 Dune Racer Chrome Power Wheels Advanced	
Age Range:	3 and up
Weight Limit:	130 lbs
Surfaces:	Monster Traction
Speed:	5 MPH Forward 2.5 Forward/Reverse
Colors:	Blue w/Black Trim/Black Wheels
Intro:	2015
Suggested Retail:	\$288.40
Box Dimensions:	18.25" x 29.375" x 50.625"
Warranty:	One Year Vehicle Six Months Battery



Item	Part #	Description	QTY	Item	Part #	Description	QTY
1	N/A	Body	1	30	J4394-2149	Retainer, Axle/Steering Column Cap	2
2	P4266-2229	Retainer Nut	6	31	00801-1621	Cap (retainer. 437) - Black	2
3	P4266-2139	Vertical Bushing	2	32	W2602-9859	Bumper for Dune Racer (chrome)	1
4	P4266-9119	Steering Linkage*	1	33	P4266-2789	Front Hubcap (black)	2
5	P4266-4519E	Front Axle*	2	34	P4266-2929	Rear Hubcap (black)	2
6	P4266-2819	Battery Door (black)	1	35	P4266-8939	Hood w/ tether for Slinger (black)	1
7	P4266-2759	Front Wheel Bushing	2	36	3000-1052	Front Fender Set for Dune Racer	1
8	W6201-2769	Steering Wheel Cap	1	37	See #36	Front Fender Left	1
9	00968-2934	# 7R Motor Gearbox Assembly (15T)	2	38	N/A	Rear Fender Set for Dune Racer	1
10	W2602-9399	Footboard Assembly (black/valer)	1	39	N/A	Rear Fender Left	1
11	W2602-9339	Shifter for Dune Racer	1				
12	W6201-2989	Sidebar Cover Left (blue)	1				
13	W6201-2999	Sidebar Cover Right (blue)	1				
14	3800-9993	Seat (gray) w/ Black Headrests	1				
15	P4266-9419	Steering Wheel (black)	1				
16	5249-2369	Rear Wheel	2				
17	W2602-2459	Rear Inner Rim (black)	2				
18	W2602-6469	Rear Outer Rim (chrome)	2				
19	J8472-2359	Front Wheel Right	1				
20	J8472-2339	Front Wheel Left	1				
21	W2602-6479	Front Rim (chrome)	2				
22	P4266-4539	Rear Axle	1				
23	P4266-4479E	Steering Column	1				
24	3900-3359	Sidebar Set (Left & Right) (CHP66)	1				
25	See #24	Passenger Side Bar	1				
26	W6201-2579	Valve Cover Left	1				
27	W6201-2589	Valve Cover Right	1				
28	W6201-9869	Steering Post for Dune Racer	1				
29	00905-0116	3/8"-16 Lock Nut	4				

Part #	Description	QTY
00801-1869	12 Volt Battery (1)	1
00801-1778	12 Volt Charger w/Probe	1
00801-1775	Switch Control - (shifter/rocker type)	2
00801-2039	Footswitch - (plunger type)	1
00968-2713	# 7R Motor Pinion (15T)	2
00968-2623	# 7R Gearbox (15-16-17)	2
P4266-9799	Main Harness	1
W2602-9269	Hardware Bag	1
W6201-9349	Parts Bag for Dune Racer	1
W6201-0310	Label for Dune Racer	1
W2602-4499	Manual	1

*When repairing parts for warranty, please refer to Additional Labor Rates under Reference Material on the B2B

Bold and underlined parts are to be purchased and installed by Service Centers only. These items may not be sold directly to consumers by Service Centers or Fisher-Price.