

This Owner's Manual is provided and hosted by [Appliance Factory Parts](#).



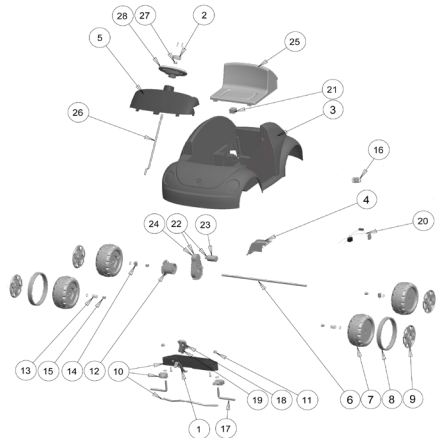
# FISHER PRICE CDD19 Owner's Manual

[Shop genuine replacement parts for FISHER PRICE  
CDD19](#)



[Find Your FISHER PRICE Ride On Parts - Select From 999 Models](#)

----- Manual continues below -----



CDD19 VW Dora & Friends Beetle Preschool Series	
Age Range:	1 1/2 - 4 Years
Weight Limit:	50 lbs
Surfaces:	Grass/Asphalt/Hard
Speed:	2.5 MPH For/Rev
Colors:	Pink Body/Black Wheels
Intro:	2015
Suggested Retail:	\$133.00
Box Dimensions:	36.75 X 17.625 X 23.375
Weight:	34 lbs
Warranty:	One Year Vehicle Six Months Battery



Item	Part #	Description	QTY	Item	Part #	Description	QTY
1	73510-4069	Steering Bracket	1	25	CDD19-9309	Seat for Dora & Friends VW	1
2	3900-3203	Steering Wheel Cap for VW	1	26	73510-4239	Steering Column	1
3	N/A	Body	27	0801-0604	Cap Nut .354 (Black)	1	
4	B9272-2419	Battery Retainer for Kawasaki KFX	1	28	3900-3191	Steering Wheel w/Steering Column	1
5	CDD19-2619	Windshield for Dora & Friends VW	1				
6	P5066-4509	Rear Axle (Threaded) for KFX	1				
7	73510-2159	Wheel - black	4				
8	73510-2479	Traction Band - black (1)	2				
9	3900-3201	Hubcap for Dora & Friends VW	4				
10	3900-3206	Steering Linkage for VW	1				
11	00801-1939	Cap Nut .437 - Black	6				
12	74460-2249	Wheel Driver 10 RIB	1				
13	73233-2559	Hex Bushing	2				
14	J8472-2379	Wheel Bushing	2				
15	74550-2069	7/16 Round/Axle Bushing (black).	6				
16	00801-1518	Large Power Wheel Emblem	1				
17	73510-4509	Front Axle	2				
18	P5921-9159	Footboard Assembly	1				
19	<u>00801-1761</u>	<u>Footswitch - 3 pin</u>	<u>1</u>				
20	<u>P5921-9788</u>	<u>Wiring Harness</u>	<u>1</u>				
21	00801-1773	Control Switch F/R - w/white buttons	1				
22	<u>00968-1900</u>	<u>#3B Motor Gearbox Assm w/o conn.</u>	<u>1</u>				
23	<u>00868-1700</u>	<u># 3 Motor Pinion Assm.</u>	<u>1</u>				
24	<u>74550-9279</u>	<u>Gearbox 3B w/ Insert</u>	<u>1</u>				

Bold and underlined parts are to be purchased and installed by Service Centers only. These items may not be sold directly to consumers by Service Centers or Fisher-Price.