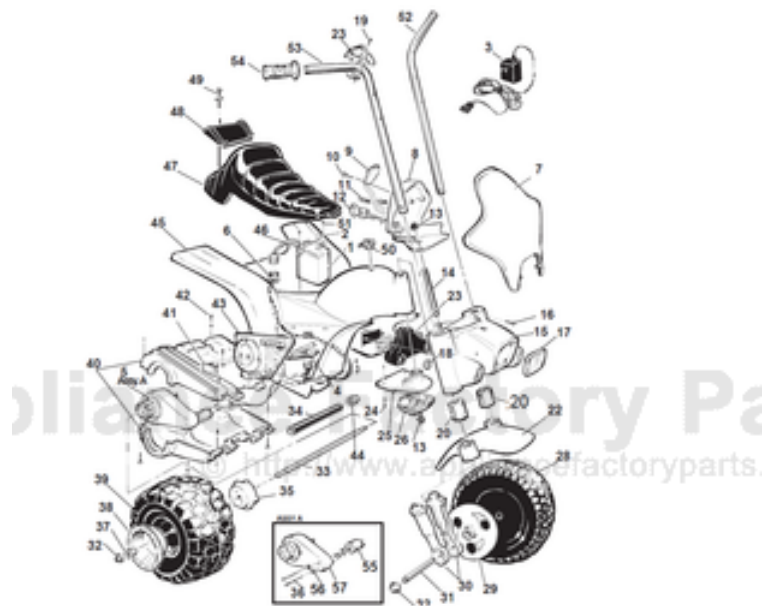


This Owner's Manual is provided and hosted by [Appliance Factory Parts](#).



FISHER PRICE 78570-84860 Owner's Manual

[Shop genuine replacement parts for FISHER PRICE
78570-84860](#)



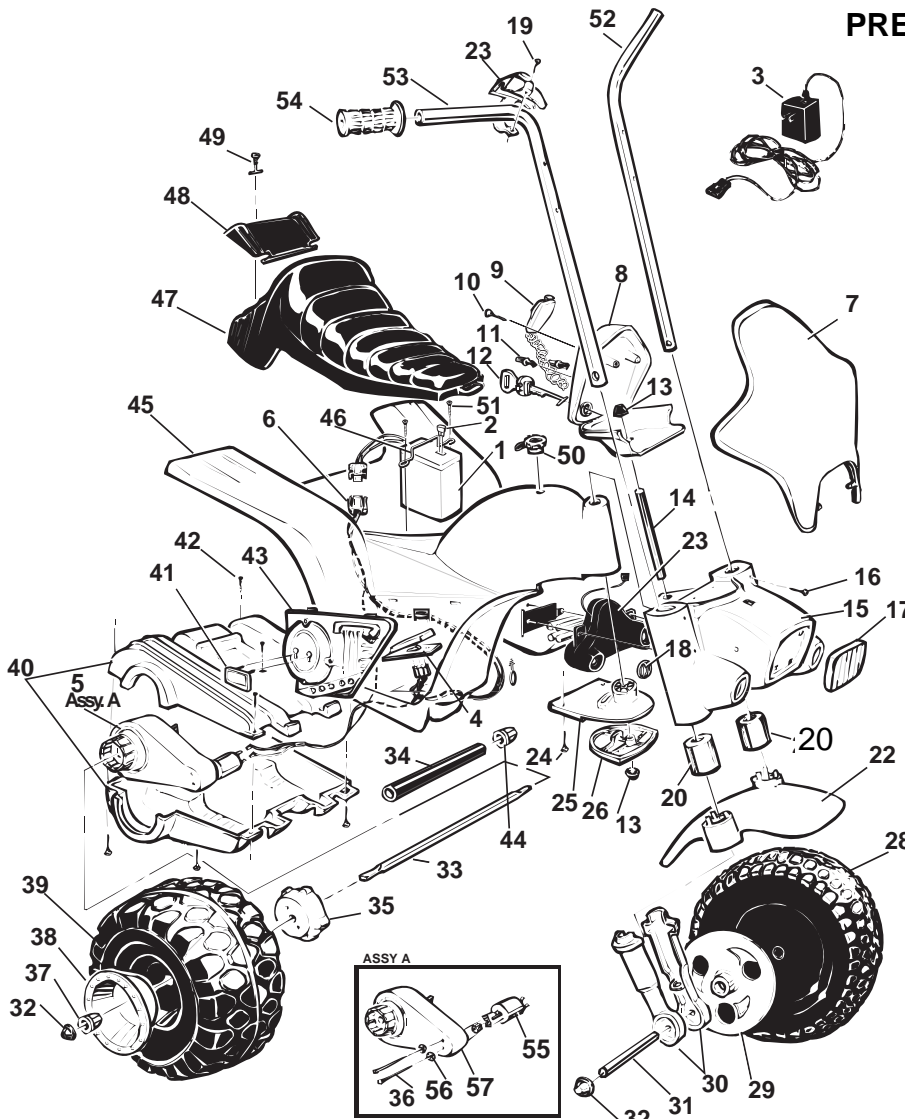
[Find Your FISHER PRICE Ride On Parts - Select From 999 Models](#)

----- Manual continues below -----



78570-9993 / 84860 HIGHWAY PATROL

PRE-SCHOOL SERIES
6 VOLT



Age Range: 2 - 6 Yrs.
Weight Limit: 50 Lbs.
Surfaces: Hard
Speed: 2.5 MPH
Colors: White Body
Yellow trim
Avail: 7-17-95 - 1997
Suggested Retail: \$129.99 - 139.99
Box Dimensions: 34" x 19" x 28"
Warranty: 90 Vehicle
6 Months Battery
Batteries (Sound/Lights) 4 AA

Service Bulletin 154

Rev. 08/11/03

Item No.	Description	Part No.	Qty.	Item No.	Description	Part No.	Qty.	Item No.	Description	Part No.	Qty.
1	Battery	00801-1234	1	25	Flex Plate N/A	76115-2259	1	49	Lock fastener	78570-2239	1
2	25 amp Fuse	0801-0151	1	26	Flex Plate Cover N/A	78570-2139	1		(when depleted, use new 78570-2439)	78570-2439	1
3	Charger	00801-0975	1	28	Wheel-Front N/A	78570-2459	1	50	Gas Cap N/A	78570-2249	1
4	*Foot Board Assembly N/A	76803-9159	1	29	Front Hubcap N/A	78570-2579	2	51	Battery Retainer Screw	0801-0228	1
5	3B Motor/Gearbox Assm	74110-9519	1	30	Shock Set N/A	78570-2099	1	52	Handlebar-Left N/A	78570-4259	1
6	*Wiring Harness N/A	78570-9799	1	31	Front Axle N/A	78570-4539	1	53	Handlebar-Right N/A	78570-4269	1
7	Windshield	78570-2729	1	32	.437 Cap Nut	0801-0214	4	54	Hand Grip	78570-2219	2
8	Dash N/A	78570-2699	1	33	Rear Axle N/A	78570-4549	1	55	Motor w/Pinion	74590-9539	1
9	Microphone	74770-9489	1	34	Rear Axle Spacer N/A	78570-4439	1	56	Lock Washer N/A	0801-0330	2
10	Dash Screws N/A	0801-0274	4	35	Driver N/A	77410-2239	1	57	3B Gearbox	74550-9279	1
11	Radio Knob N/A	78570-2179	2	36	Motor Bolts	0801-0269	2				
12	Key / Key Housing N/A	74550-2439	1	37	Hex Bushing N/A	78570-2559	2				
13	.354 Cap Nut	0801-0604	2	38	Rear Wheel Hubcap	74590-2579	2				
14	Pivot Pin N/A	78570-4419	1	39	Wheel - Rear	78570-2469	2				
15	Fairing N/A	78570-9299	1	40	Rear Module N/A	78570-2199	2				
16	Fairing Screw N/A	0801-0224	1	41	Power Wheels Emblem	74460-9069	2				
17	Headlight Lens N/A	78570-2279	1	42	Rear Module Screws	0801-0224	5				
18	Blue Lens N/A	78570-2259	1	43	False Motor Set N/A	78570-2149	1				
19	Siren Switch Screw	0801-0223	5	44	Small Bushing	74550-2689	1				
20	Shock Extension N/A	78570-2089	2	45	Body (N/A)	78570-2109	1				
22	Front Fender N/A	78570-9289	1	46	Battery Retainer N/A	78570-4429	1				
23	Sound/Light Box w/Trig N/A	78579-9659	1	47	Seat N/A	78570-2319	1				
24	Pivot Screws N/A	0801-0216	2	48	Seat Lid N/A	78570-2309	1				

*Service Bulletin 154

Bold and Underlined parts are to be purchased and installed by Service Centers only. These items may not be sold directly to consumers by Service Centers or Fisher-Price.

N/A = Not Available

PARTS NOT SHOWN

1 1/4" Screw (Flex Plate) N/A	0801-0216	2
Handlebar Plugs N/A	74510-2169	2
Literature Bag N/A	78570-0300	1
Adhesive Harness Clip	0801-0313	1
Main Decal Sheet N/A	78570-0330	1
Paper Decal Sheet N/A	78570-0340	1
Lens-Red N/A	78570-2269	1
Large Parts Bag N/A	78570-9249	1
Small Parts Bag N/A	78570-9239	1