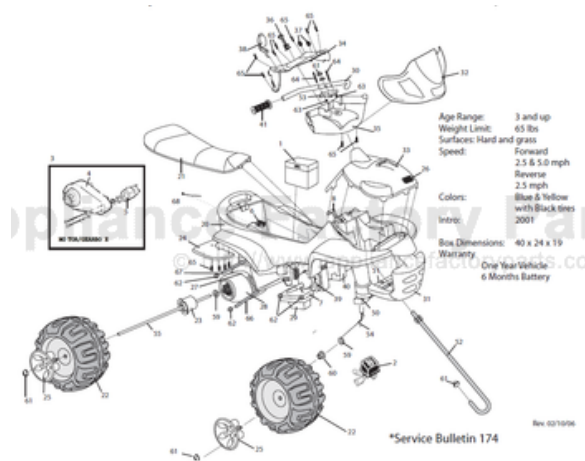


This Owner's Manual is provided and hosted by [Appliance Factory Parts](#).



# FISHER PRICE 73690-9993-On or After 1/26/04 Owner's Manual

[Shop genuine replacement parts for FISHER PRICE  
73690-9993-On or After 1/26/04](#)



[Find Your FISHER PRICE Ride On Parts - Select From 999 Models](#)

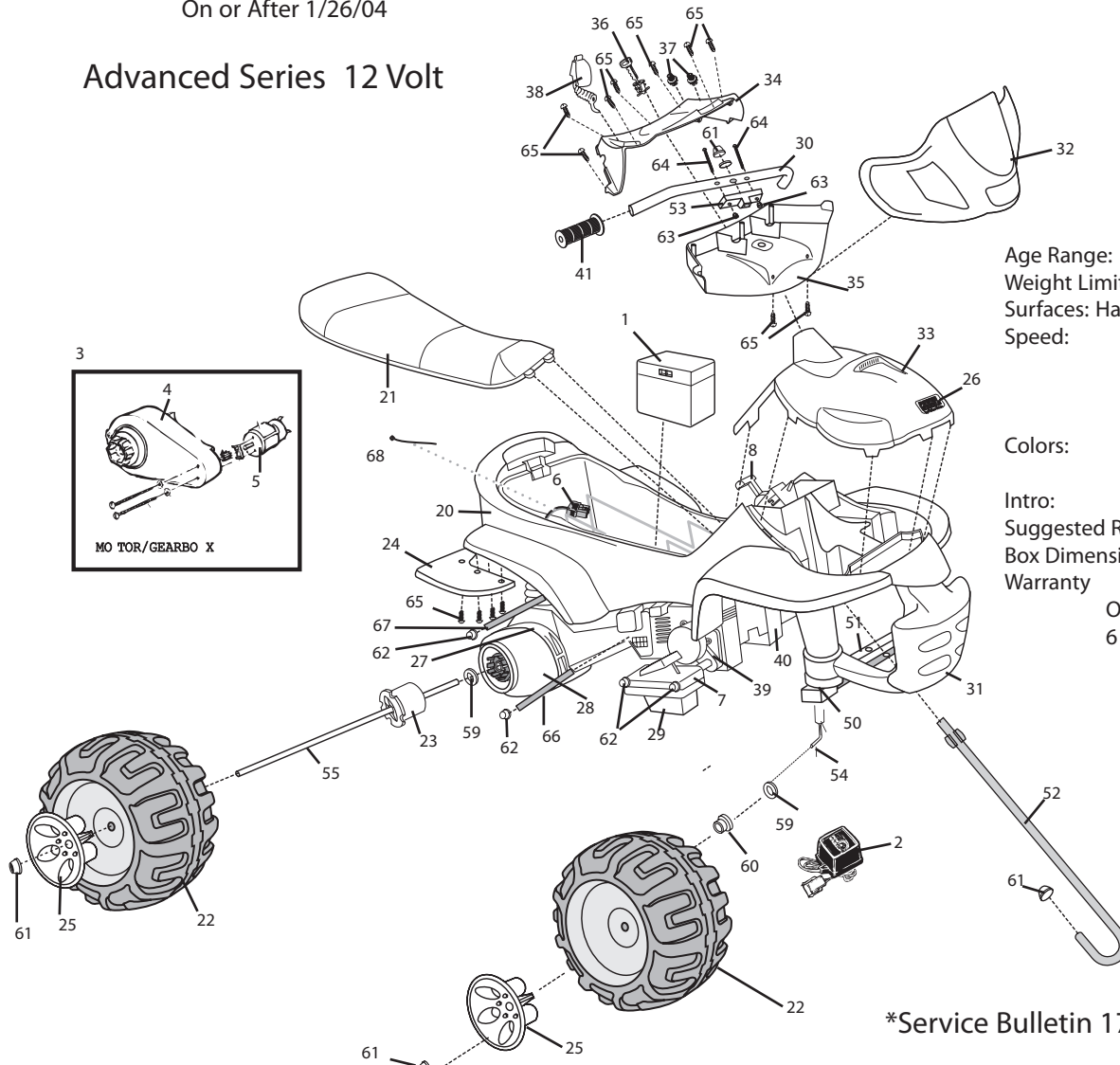
----- Manual continues below -----

# 73690-9993

## Ninja

On or After 1/26/04

### Advanced Series 12 Volt



Age Range: 3 and up  
 Weight Limit: 65 lbs  
 Surfaces: Hard and grass  
 Speed: Forward  
 2.5 & 5.0 mph  
 Reverse  
 2.5 mph  
 Colors: Blue & Yellow  
 with Black tires  
 Intro: 2001  
 Suggested Retail: \$179.99  
 Box Dimensions: 40 x 24 x 19  
 Warranty  
 One Year Vehicle  
 6 Months Battery

Rev. 02/10/06

\*Service Bulletin 174

Item No.	Description	Part No.	Qty.	Item No.	Description	Part No.	Qty.	Item No.	Description	Part No.	Qty.
<b>Working / Electrical Parts</b>											
1	Battery 12 volt	00801-0638	1	28	Motor Housing Bottom (After 1/26/04)	C7478-2169	1	61	*.437 Capnut Black	0801-0226	6
2	Charger 12 volt probe	00801-0972	1	29	Footboard lower	73690-2179	1	62	.354 Retainer Black	0801-0604	4
<b>3</b>	<b>#7 Motor Gearbox Assembly</b>	<b>00968-2912</b>	<b>2</b>	30	Handle Bar	73690-4229	1	63	#10 Nylock Lock Nut N/A	0801-0318	2
	(On or After 1/26/04)			31	Brushguard	73690-2079	1	64	#10 1 1/2 Phill Screw N/A	76222-4459	2
<b>4</b>	<b>#7 Gearbox W/out Motor</b>	<b>00968-2802</b>	<b>2</b>	32	Fairing	73690-274A	1	65	Screw #8 x 3/4" N/A	0405-2073	17
	(On or After 1/26/04)			33	Cowling Assembly	73690-9099	1	66	Motor Rod Upper N/A	74110-4559	1
<b>5</b>	<b>Motor Pinion Assembly</b>	<b>00968-2702</b>	<b>2</b>	34	Dash Upper	73690-275A	1	67	Motor Rod Lower N/A No sub	74110-4569	1
	(On or After 1/26/04)			35	Bottom Handlebar cover	73690-2769	1	<b>68.</b>	<b>Harness Cable Tie</b>	<b>00801-1125</b>	<b>1</b>
<b>6</b>	<b>Main Harness Assembly</b>	<b>74110-9799</b>	<b>1</b>	36	Key Housing N/A	74460-9369	1	<b>Parts Not Shown</b>			
7	Footboard Assembly	73690-9169	1	37	Radio Knob	74510-2149	2	Large Parts Bag (molded parts) 73690-9449 1			
8	Shifter Assembly	73690-9439	1	38	Microphone	73690-9479	1	Small Parts Bag (purchased parts) 73690-9459 1			
	<b>*See Parts Not Shown</b>			39	False Motor Cover Right	73690-2059	1	Hardware Bag 73690-9279 1			
				40	False Motor Cover Left	73690-2069	1	Owners Manual 73690-0920 1			
				41	Handgrip	73690-2229	2	Decal Sheet 73690-0310B 1			
								Capnut Tool 78640-2629 1			
<b>Plastic / Other Parts</b>											
20	Body	N/A		<b>Hardware / Metal Parts</b>							
21	Seat	73690-2309	1	50	Steering Linkage Assembly	74110-9239	1	<b>Control Switch (rocker style) 00801-0923 1</b>			
22	Wheel	73690-2469	4	51	Crossbar	73690-4649	1	Paper Kit N/A 73690-Paper 1			
23	Driver	74460-2249	2	52	*Steering Column	73690-4249	1	Footrest 73690-2189 1			
24	Mud Flap Set	73690-8001	1	53	Metal Neck	73690-4289	1	Hi-Speed Lock Out Screw 0801-0198 1			
25	Hubcap	73690-2579	4	54	Axle Front	73690-4509	2	<b>Footswitch (plunger) 00801-1566 1</b>			
26	PW Emblem	74460-9069	1	55	Axle Rear	73690-4549	1	<b>*12V Shifter Harness 74110-9689 1</b>			
27	Motor Housing Top (After 1/26/04)	C7478-2159	1	56	Upper Bushing	74110-2129	1	<b>(On or Before 10/31/03)</b>			
				57	Lower Bushing	74110-2639	1	<b>*12V Shifter Assembly w/Harness 73690-9679D 1</b>			
				59	7/16 Washer	0801-0196	5	<b>(After 10/31/03)</b>			
				60	Round Bushing	74550-2689	2				

**Bold and Underlined parts are to be purchased and installed by Service Centers only. These items may not be sold directly to consumers by Service Centers or Fisher-Price.**

# 73690-9993

## Ninja

### Advanced Series 12 Volt

Age Range: 3 and up  
 Weight Limit: 65 lbs  
 Surfaces: Hard and grass  
 Speed: Forward 2.5 & 5.0 mph  
 Reverse 2.5 mph  
 Colors: Blue & Yellow with Black tires  
 Intro: 2001  
 Suggested Retail: \$179.99  
 Box Dimensions: 40 x 24 x 19  
 Warranty

One Year Vehicle  
 6 Months Battery



### Parts Bag Breakdown

Item No.	Description	Part No.	Qty.	Item No.	Description	Part No.	Qty.	Item No.	Description	Part No.	Qty.	
Large Parts Bag			73690-9449	Small Parts Bag			73690-9459	Hardware Bag				73690-9279
	Hubcap	73690-2579	4		Handgrip	73690-2229	2		Screw 8x3/4 inch	0405-2073	19	
	Mudflap set	73690-8001	1		Metal Neck	73690-4289	1		Washer 7/16	0801-0196	6	
	Microphone	73690-9479	1		Hardware bag	73690-9279	1		Retainer Black, .437	0801-0226	8	
	Wheel Driver	74460-2249	2						Nylock Nut	0801-0318	2	
	Key Housing	74460-9369	1						Screw 10x1.5 inch phillips head	76222-4459	2	
	Radio Knob (Black)	74510-2149	2									
	Axle Bushing, .437	74550-2689	2									
	Cap Nut Tool	78640-2629	1									

### Service Bulletins

As of 5/19/03 the B1512 product requires no service bulletins. Please check [www.B2B.com](http://www.B2B.com) for future updates.

### Refund Reference Information

Retail Price \$179.00  
 80% \$143.20  
 60% \$107.40  
 40% \$71.60  
 20% \$35.80

