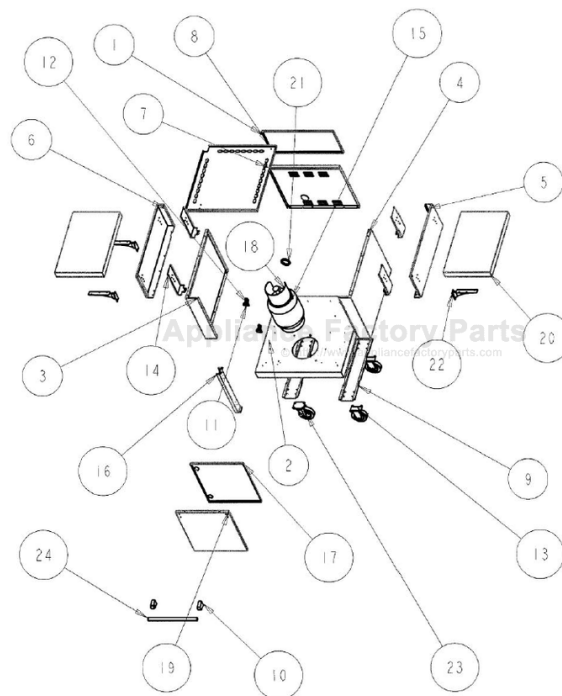


This Owner's Manual is provided and hosted by [Appliance Factory Parts](http://ApplianceFactoryParts.com).



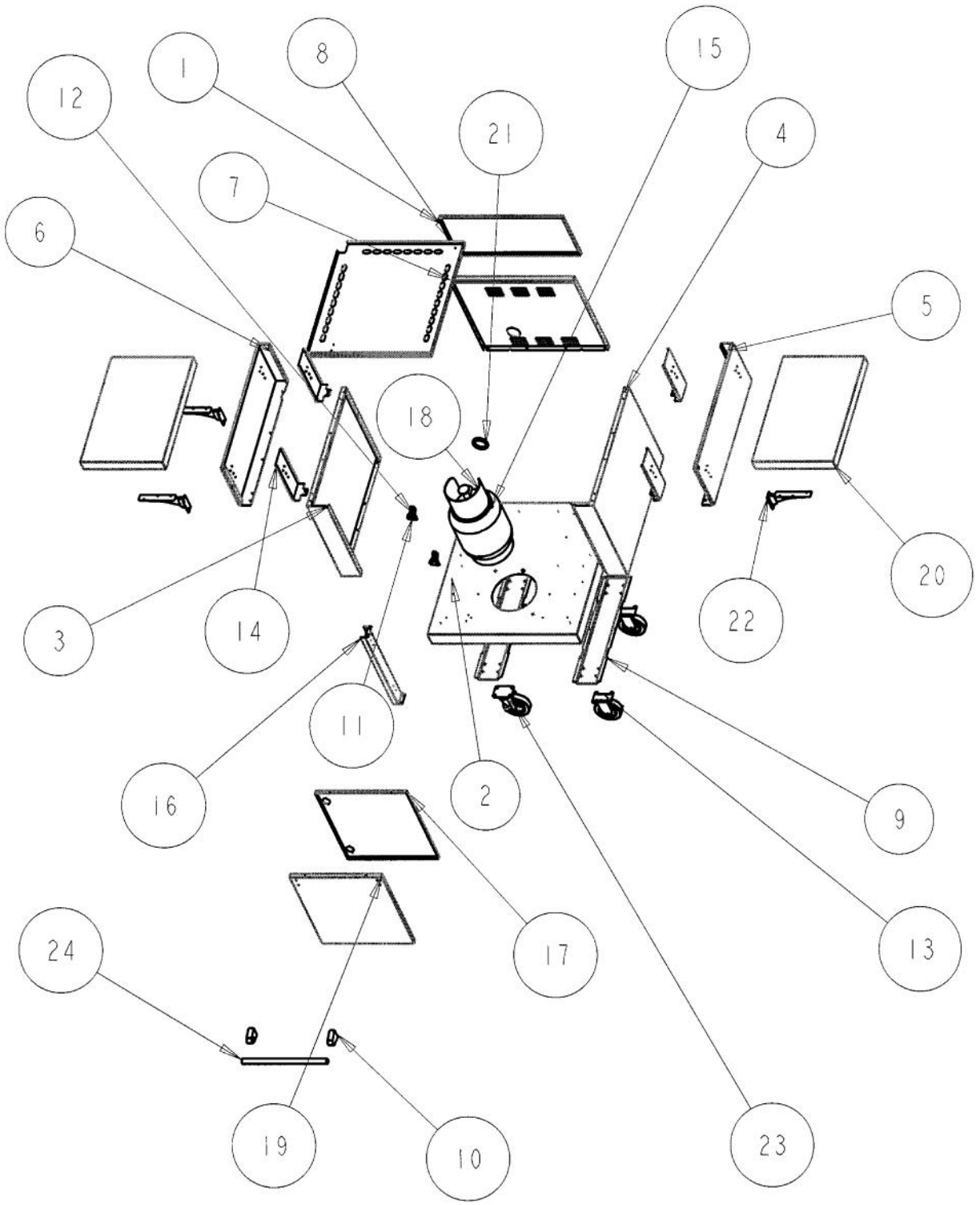
# VIKING BQC300T2\_1 Owner's Manual

**[Shop genuine replacement parts for VIKING  
BQC300T2\\_1](#)**



**[Find Your VIKING Grill Parts - Select From 210 Models](#)**

----- Manual continues below -----



Ref #	Part Number	Qty.	Description
1	B2005345		30 CART BACK
2	B3008981		CART BOTTOM - 30
3	B2008985		LH CART SIDE 30
4	B2008987		RH CART SIDE BQC300T2SS
5	B2007242		30 UPPER CART SIDE-RH (BQC300T1)
6	B2007243		30 UPPER CART SIDE LH (BQC300T1)
7	B2008980		CART BACK - 30
8	B2008988		CART TOP - 30
9	B2008982		CASTER BRACE
10	PE030001		BRACKET, DOOR, HANDLE
	PE030001PVD		END CAP DOOR HANDLE XBR
11	PC020172		DOOR HINGE (BBQ)
12	PC020173		DOOR HINGE RECEIVER (BBQ)
13	PC030021		CASTER, FIXED
14	B2006320		SIDE SHELF HINGE REINFORCEMENT
15	PD040004		GROMMET BUMPER
16	B2008983		HINGE BAR
17	B2008984		INNER DOOR - BQC300T2SS
18	N/A		HEAT SHIELD - MUST ORDER ITEM NO. 11
19	B2008986		OUTER DOOR BQC300T2SS
20	B3005378		SIDE SHELF PH II BQC530TSS
21	PD040052		SIDE BURNER GROMMET
22	PC020031		FOLD DOWN SHELF BRACKET
23	PC030020		CASTER, SWIVEL
24	PE030096		CART DRAWER HANDLE XSSX 16.494
	PE030096PVD		CART DOOR HANDLE - BQC410T -BRASS