

This Owner's Manual is provided and hosted by [Appliance Factory Parts](#).



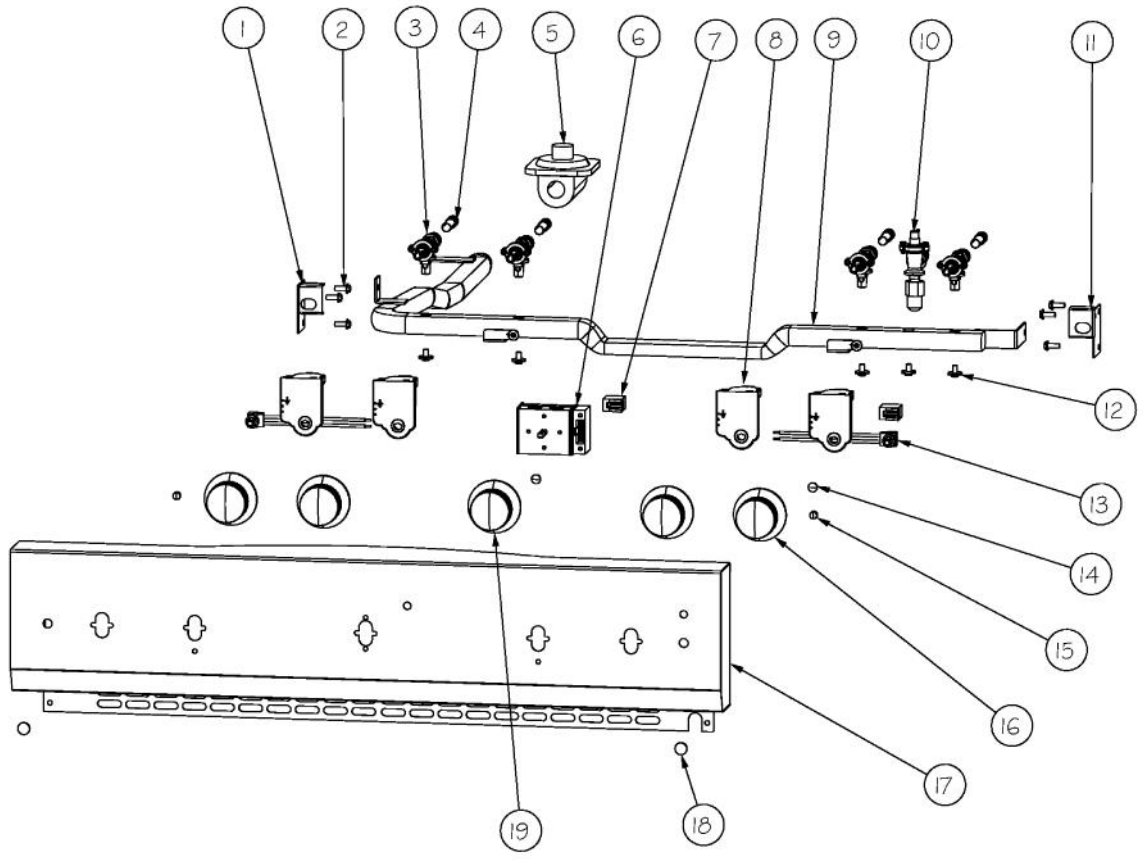
# VIKING DCCG1301-4B Owner's Manual

[Shop genuine replacement parts for VIKING  
DCCG1301-4B](#)

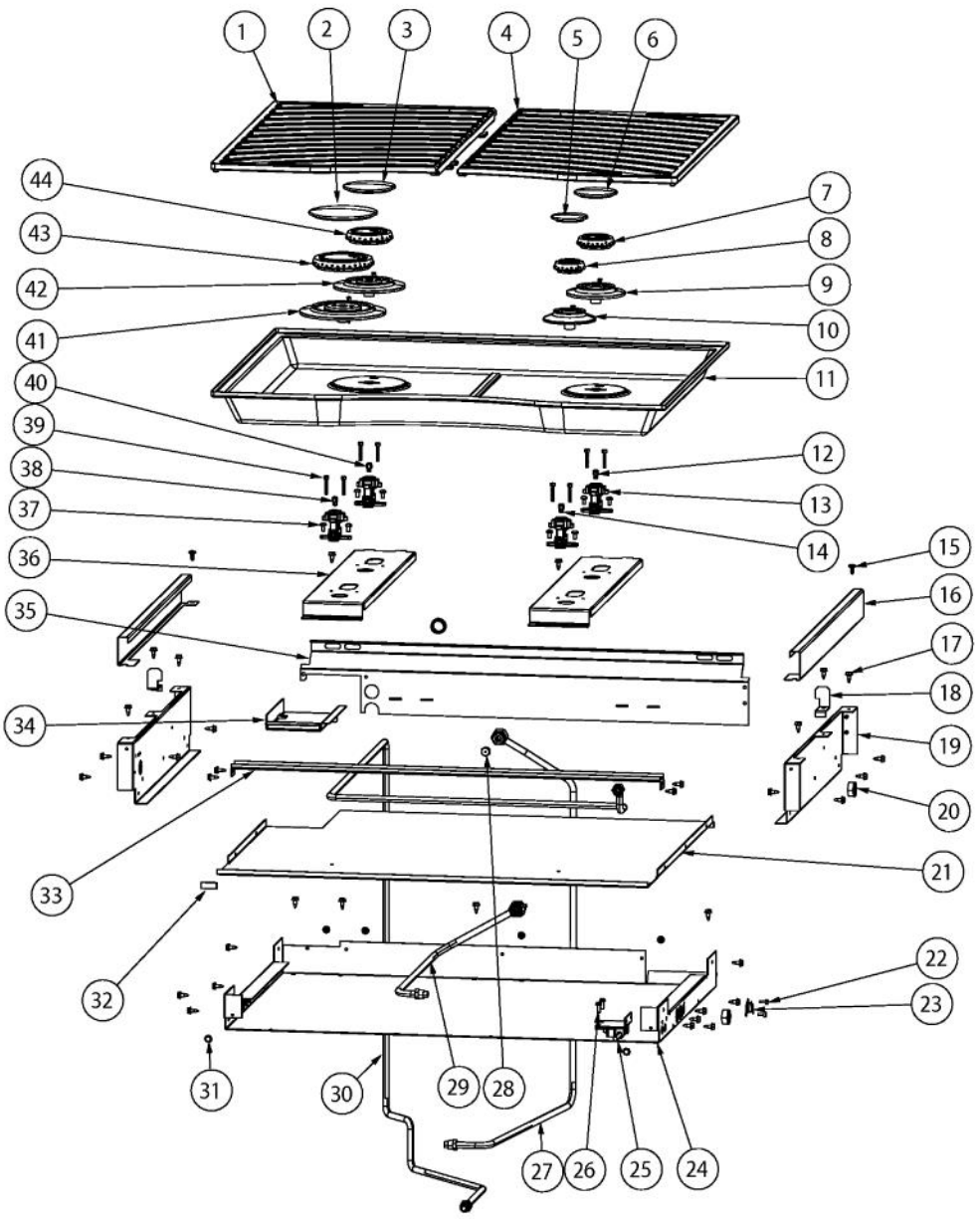


[Find Your VIKING Range Hoods Parts - Select From 411 Models](#)

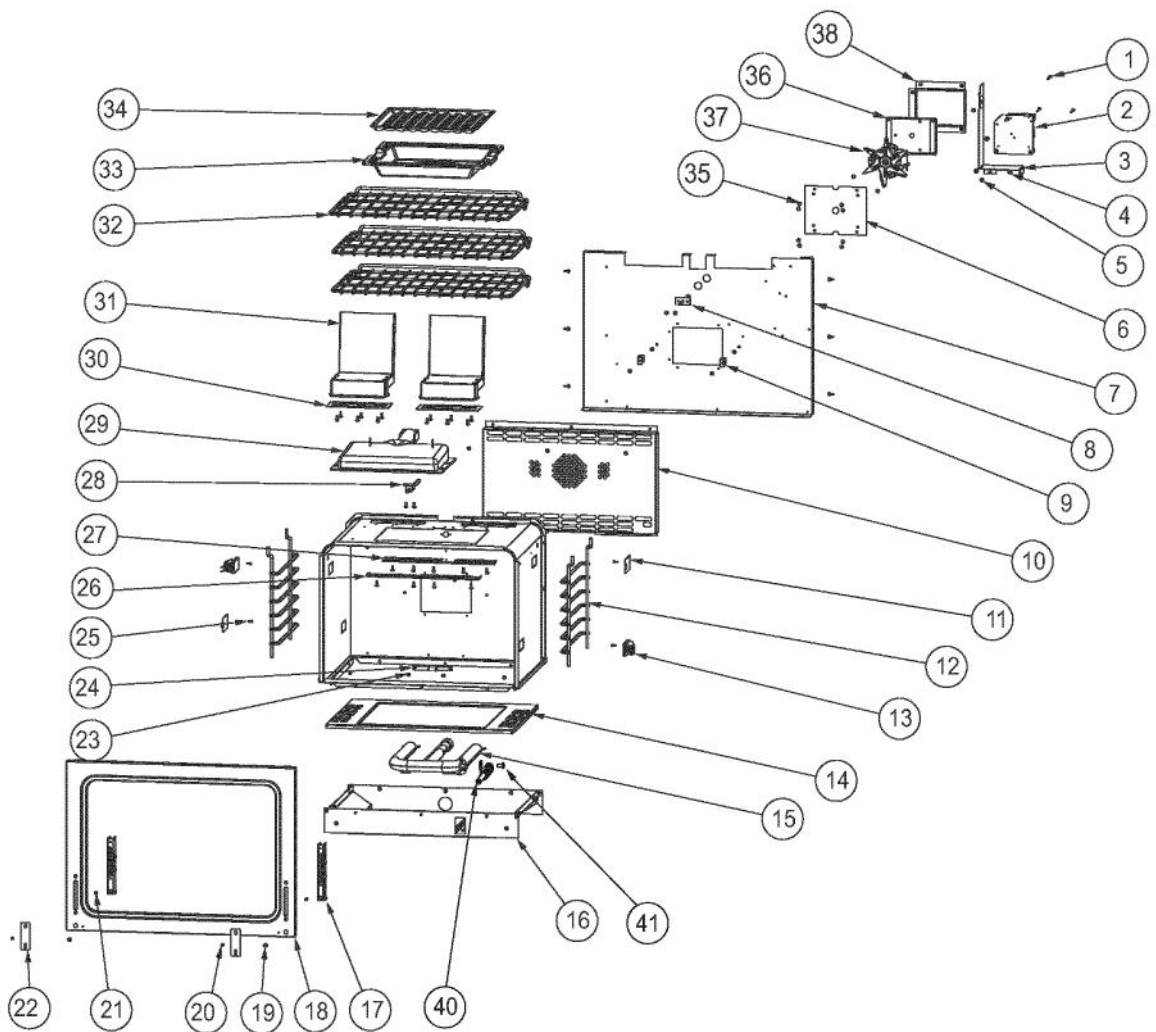
----- Manual continues below -----



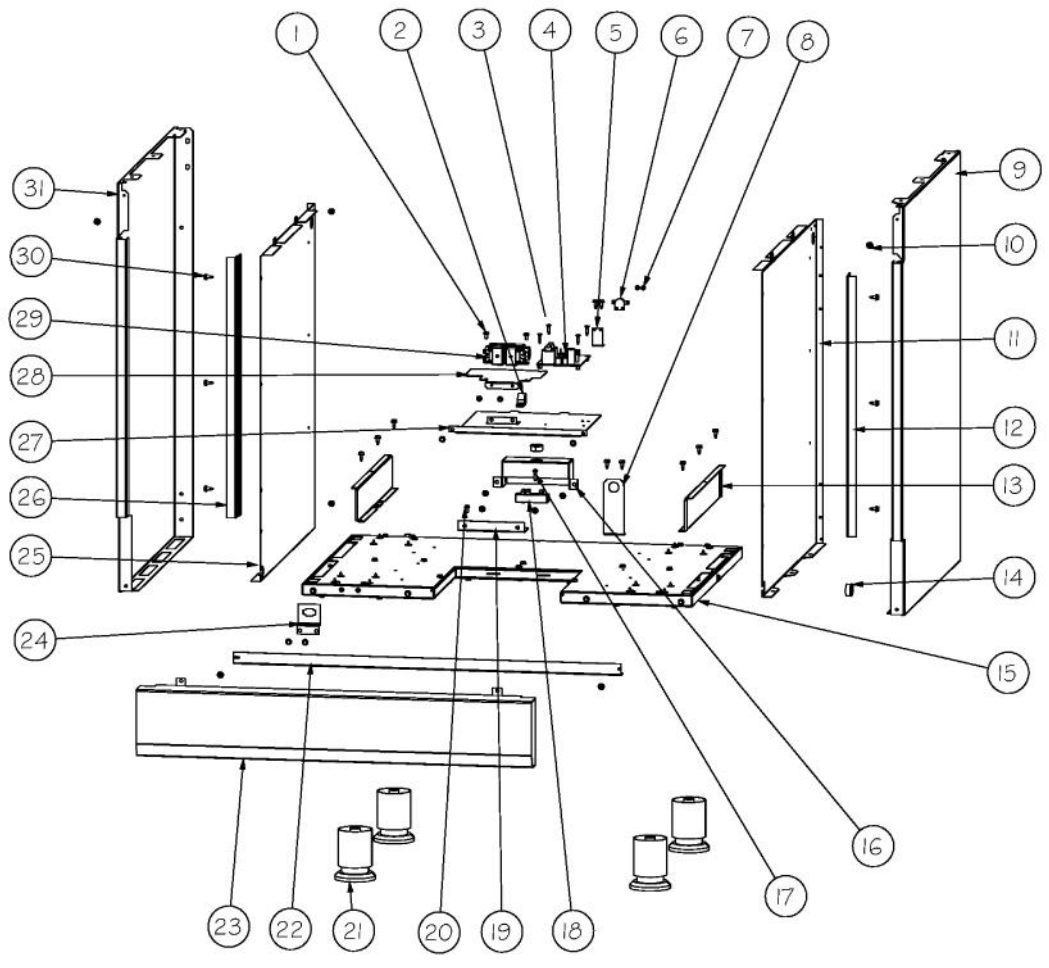
| Ref # | Part Number | Qty. | Description                              |
|-------|-------------|------|--|
| 1     | 015990-000  | 1    | BRACKET, LT, LF, DCCG130-4B              |
| 2     | PD020048    | 6    | NO.10 X 1/2 TEK 410 SS SCREW             |
| 3     | PA010211    | 4    | DGRT TOP BURNER VALVE                    |
| 4     | PB020198    | 4    | 20 FLEX TUBING                           |
| 5     | 023883-000  | 1    | REGULATOR, PRSS, NAT, 5, DESIGNER        |
| 5     | 023884-000  | 1    | REGULATOR, PRSS, L.P., 10 DESIGNER       |
| 6     | 012235-000  | 1    | ELECTRONIC THERMOSTAT - 2 POS. W/O LEADS |
| 7     | 015170-000  | 2    | HOUSING, LIGHT, BLUE NEON, 125V          |
| 8     | PA020058    | 4    | IRIS SINGLE SPARK MODULE                 |
| 9     | 015280-000  | 1    | MANIFOLD, 30 DESIGNER RANGE              |
| NI    | 002926-000  | 1    | GAS MANIFOLD, REDESIGN                   |
| 10    | PB030007    | 1    | SHUT OFF VALVE                           |
| 11    | 014247-000  | 1    | BRACKET, LT, RT, DCCG130-4B              |
| 12    | PD010012    | 5    | VALVE BOLT 1/4-20 UNC-2B 5/16 M.S.       |
| 13    | PE050076    | 2    | DESIGNER OVEN LIGHT SWITCH               |
| 14    | 015174-000  | 2    | LENS, BLUE                               |
| 15    | PA010093    | 2    | DESIGNER OVEN LT SWITCH KNOB             |
| 16    | PA010163    | 4    | DGRT KNOB-CHROME W/BLACK SLEEVE          |
| 17    | 013671-2211 | 1    | CONTROL PANEL ASM, DCCG130-4B            |
| 18    | PD040004    | 2    | GROMMET BUMPER                           |
| 19    | 014489-000  | 1    | KNOB, OVEN                               |



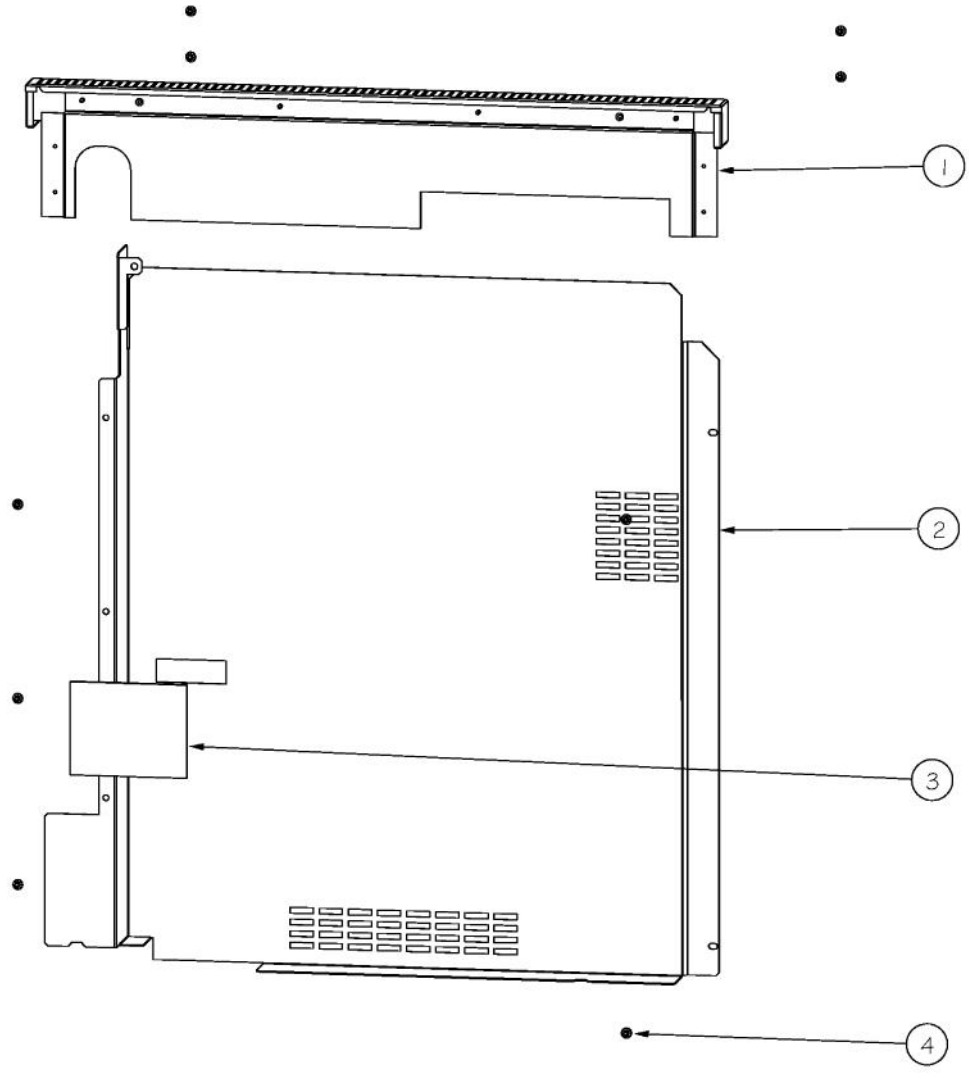
| Ref # | Part Number | Qty. | Description                              |
|-------|-------------|------|--|
| 1     | 016476-000  | 1    | LEFT GRATE, 30 DESIGNER RANGE            |
| 2     | PA080083    | 1    | D BURNER CAP XMATTE BLACKX               |
| 3     | PA080107    | 1    | DGRT-C BURNER CAP- BLACK                 |
| 4     | 016477-000  | 1    | RIGHT GRATE, 30 DESIGNER RANGE           |
| 5     | PA080103    | 1    | DGRT-A BURNER CAP- BLACK                 |
| 6     | PA080105    | 1    | DGRT-B BURNER CAP- BLACK                 |
| 7     | PA080100    | 1    | DGRT-B COMPLETE BURNER HEAD ASSEMBLY     |
| 8     | PA080099    | 1    | DGRT-A COMPLETE BURNER HEAD ASSEMBLY     |
| 9     | PB050071    | 1    | B-BASE                                   |
| 10    | PB050072    | 1    | A-BASE                                   |
| 11    | E91011410BK | 1    | BURNER PAN, DGRT300 XBKX                 |
| 12    | PB040236    | 1    | NO.55 NAT                                |
| 12    | PB040204    | 1    | NO.67 LP                                 |
| 13    | PB050067    | 3    | JETHOLDER                                |
| 14    | PB040200    | 1    | NO.57 ORIFICE - LP                       |
| 14    | PB040275    | 1    | NO.70 ORIFICE - LP                       |
| 15    | 003801-000  | 1    | SHOULDER SCREW, NO.10                    |
| 16    | 016000-000  | 2    | TRIM,SST,NO.3,SIDE TRIM,DESIGNER RNG,RH  |
| 17    | 003860-000  | 21   | NO.10-18 X .500 FASTNR,SCR,HXWH,STL,ZPLT |
| 18    | 015106-000  | 2    | SIDE TRIM SUPPORT                        |
| 19    | 013663-000  | 2    | BURNER BOX, SIDE, RT                     |
| 20    | PD040005    | 3    | SNAP BUSHING - 7/8                       |
| 21    | 013670-000  | 1    | BURNER BOX, DCCG130                      |
| 22    | PD020067    | 1    | NO.6 X 3/8 PAN PHIL. TEK SS              |
| 23    | PJ030039    | 1    | BI-METAL THERMOSTAT 275 DEGREES          |
| 24    | 013662-000  | 1    | CAVITY, TOP, DCCG130-4B                  |
| 25    | PE050208    | 1    | DOOR SWITCH                              |
| 26    | PD020060    | 1    | 10 X 1/2 (5/16)HEX WSHR HD.(T)A          |
| 27    | 014789-000  | 1    | TUBING, BROIL ASM                        |
| 28    | PB040026    | 1    | IR BURNER ORIFICE - NO.48 NAT.           |
| 28    | PB040027    | 1    | IR BUR.SPUD ORF. - NO.56 LP              |
| 29    | 014790-000  | 1    | TUBING, BAKE (NAT)                       |
| 29    | 014791-000  | 1    | TUBING, BAKE, LP                         |
| 30    | PB020218    | 1    | 3/8 S.S. FLEX TUBING 70                  |
| 31    | PD020032    | 2    | SRW-8(A)X3/8PH.WFR HD 7/16DIAXNICL       |
| 32    | PB070058    | 1    | COOKTOP GASKET-(VGSU101)                 |
| 33    | 014196-000  | 1    | SUPPORT, PAN, DESIGNER                   |
| 34    | 014199-000  | 1    | COVER, REGULATOR BASE                    |
| 35    | 014540-000  | 1    | SUPPORT,BURNER BOX, RR, DCCG130          |
| 36    | 014202-000  | 2    | SUPPORT, ORIFICE HOLDER                  |
| 37    | PD020004    | 8    | 10X3/8PH.HD.TYPE 25 REPL PD040125        |
| 38    | PB040254    | 1    | NO.49 NAT                                |
| 38    | PB040274    | 1    | NO.58 LP                                 |
| 39    | PD020159    | 8    | DGSU BURNER BASE SCREW                   |
| 40    | PB040255    | 1    | NO.52 NAT                                |
| 40    | PB040271    | 1    | NO.60 LP                                 |
| 41    | PB050069    | 1    | D-BASE                                   |
| 42    | PB050070    | 1    | C-BASE                                   |
| 43    | PA080102    | 1    | DGRT-D COMPLETE BURNER HEAD ASSEMBLY     |
| 44    | PA080101    | 1    | DGRT-C COMPLETE BURNER HEAD ASSEMBLY     |



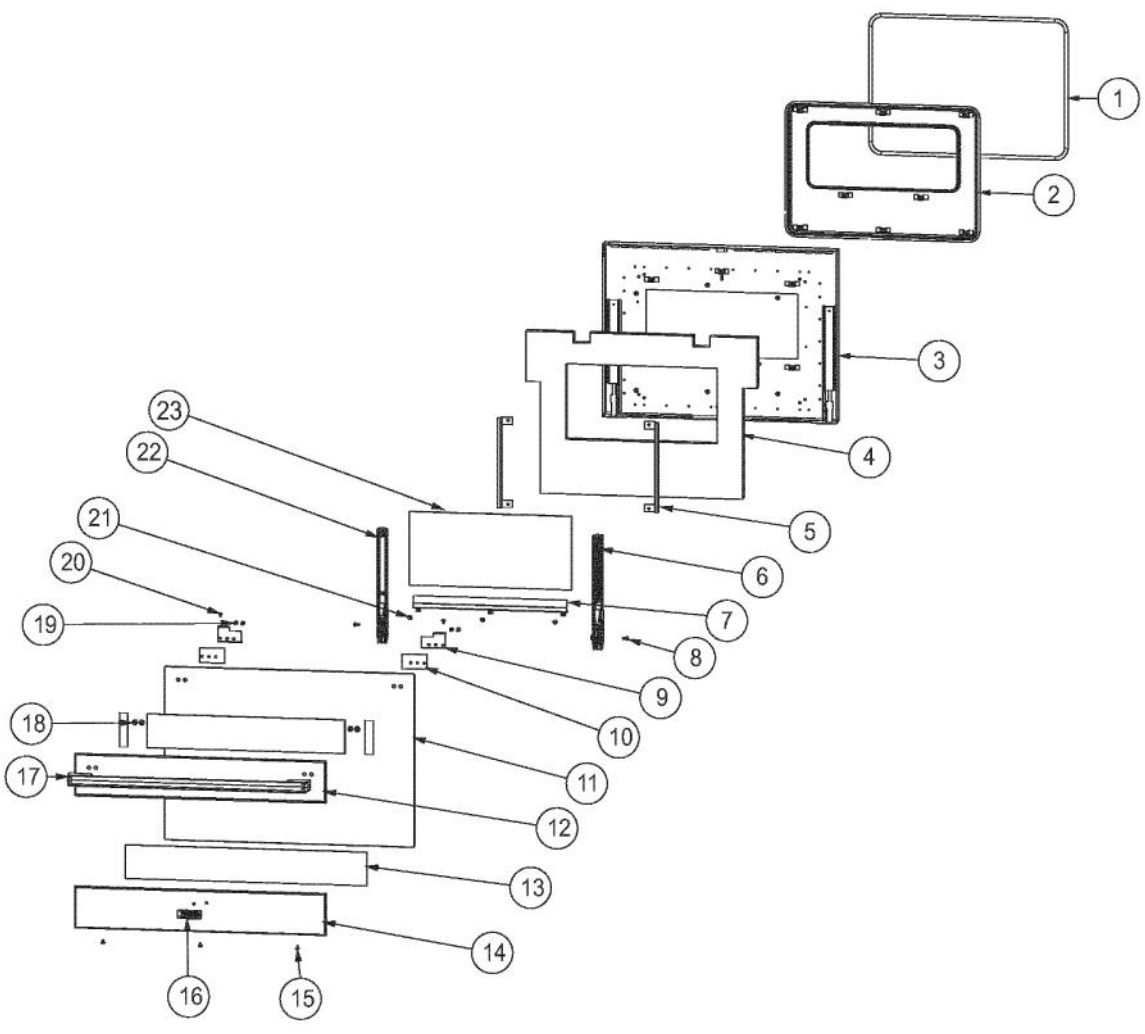
| Ref # | Part Number | Qty. | Description                                    |
|-------|-------------|------|--|
| 1     | 017177-000  | 3    | SCREW, PHIL, PAN, AB TIP                       |
| 2     | 003187-000  | 1    | FLATPAK FAN MOTOR                              |
| 3     | 016458-000  | 1    | CHANNEL, AIR FLOW                              |
| 4     | PD040036    | 3    | BUSHING - 7/16O.D. X 1/4TCK XSSX               |
| 5     | 003860-000  | 10   | NO.10-18 X .500 FASTNR,SCR,HXWH,STL,ZPLT       |
| 6     | A1002596    | 1    | CONVECTION FAN COVER (VDSC)                    |
| 7     | 004626-000  | 1    | PANEL, BACK, INSULATION, 30                    |
| 8     | 007008-000  | 1    | RTD PROBE                                      |
| 9     | A2001361    | 2    | BACK SPACER (VGSC/VGSS)                        |
| 10    | 014754-000  | 1    | COVER, FAN, ASM, 30 GAS, BLUE PORCELAIN        |
| 11    | 014752-000  | 2    | COVER, LT, BLUE PORCELAIN                      |
| 12    | PB060030    | 2    | RACK SUPT REPL PB060010                        |
| 13    | 005311-000  | 2    | 120V/25W HALOGEN LIGHT                         |
| 14    | 014922-000  | 1    | OVEN BOTTOM PAN ASM (VGSC306)                  |
| 15    | 005329-000  | 1    | BURNER, OVEN, ASM                              |
| 15    | 005330-000  | 1    | BURNER, OVEN, ASM (LP)                         |
| 16    | 014748-000  | 1    | BURNER PAN ASM                                 |
| 17    | 003060-000  | 2    | HINGE RECEPTACLE, VDSC CUSTOM                  |
| 18    | 014756-000  | 1    | FRAME, ASM, FRONT, 30 GAS, BLUE PORCELAIN      |
| 19    | PD020014    | 2    | 10X3/4 PH TR HD SMS                            |
| 20    | PD020061    | 2    | NO.8 X 3/4 FLAT HD TEK. SS.                    |
| 21    | PD020232    | 2    | NO.8 X 3/4 PH PAN HEAD TEK SCREW (BLACK OXIDE) |
| 22    | 007278-000  | 2    | ARM HINGE CLIP                                 |
| 23    | M0210443    | 4    | SCREW-E SM                                     |
| 24    | A2004428    | 1    | REAR BOTTOM BRCKT (VGSC306)                    |
| 25    | PD020067    | 4    | NO.6 X 3/8 PAN PHIL. TEK SS                    |
| 26    | B2002261    | 1    | FRONT I/R BROILER SUPPORT BRACKET              |
| 27    | B2005589    | 1    | REAR BROILER BRACKET                           |
| 28    | PB040171    | 1    | BROIL IGNITION ELECTRODE                       |
| 29    | G3001876    | 1    | IR BURNER ASSY (VGSC/RC) N/S                   |
| 30    | 019162-000  | 2    | EXHAUST GASKET                                 |
| 31    | 014870-000  | 2    | EXHAUST, ASM, GAS, DESIGNER                    |
| 32    | PB060044    | 3    | OVEN RK VDSC30/48RH REPL PB060019              |
| 33    | 014923-000  | 1    | PAN, BROILER, BLUE PORCELAIN                   |
| 34    | 014924-000  | 1    | INSERT, BROILER PAN, BLUE PORCELAIN            |
| 35    | PD020048    | 40   | NO.10 X 1/2 TEK 410 SS SCREW                   |
| 36    | A2002595    | 1    | CONVECTION FAN BOX (VDSC)                      |
| 37    | PE050057    | 1    | CONVECTION FAN (VGSC306)                       |
| 38    | A2008467    | 1    | INSULATION SHIELD                              |
| 39    | 014751-000  | 1    | OVEN CVTY, ASM, 30 GAS, BLUE PORCELAIN         |
| 40    | PB040170    | 1    | BAKE IGNITION ELECTRODE                        |
| 41    | PD020048    | 1    | NO.10 X 1/2 TEK 410 SS SCREW                   |



| Ref # | Part Number | Qty. | Description                                    |
|-------|-------------|------|--|
| 1     | PD020004    | 4    | 10X3/8PH.HD.TYPE 25 REPL PD040125              |
| 2     | PD030109    | 1    | INSULATED CLAMP                                |
| 3     | PD020061    | 4    | NO.8 X 3/4 FLAT HD TEK. SS.                    |
| 4     | PA020056    | 1    | TYTRONICS DSI MODULE<br>(BEFORE 01/01/11)      |
| 4     | 023651-000  | 1    | DSI120 LONG PURGE<br>(ON OR AFTER 01/01/11)    |
| 5     | A20014089   | 1    | DISC BRACKET                                   |
| 6     | PJ030022    | 1    | HIGH LIMIT SWITCH                              |
| 7     | PD020067    | 1    | NO.6 X 3/8 PAN PHIL. TEK SS                    |
| 8     | 014642-000  | 1    | BRACKET, BAKE ORIFICE                          |
| 9     | 014764-000  | 2    | PANEL, SIDE, DESIGNER, RH, SS                  |
| 10    | 003801-000  | 4    | SHOULDER SCREW, NO.10                          |
| 11    | 013659-000  | 2    | INSULATION, PNL, SIDE, RH                      |
| 12    | 019175-000  | 2    | BRACKET, SIDE, RH                              |
| 13    | 013661-000  | 2    | BRACKET, SUPPORT                               |
| 14    | PD040005    | 2    | SNAP BUSHING - 7/8                             |
| 15    | 015831-000  | 1    | BASE ASM                                       |
| 16    | 006945-000  | 1    | COVER, TERM, BLOCK                             |
| 17    | PD020232    | 1    | NO.8 X 3/4 PH PAN HEAD TEK SCREW (BLACK OXIDE) |
| 18    | 007400-000  | 1    | BLOCK, TERMINAL                                |
| 19    | 007484-000  | 1    | TERMINAL, BLOCK, BRACKET                       |
| 20    | PD020010    | 1    | 10 X 3/8 GREEN GROUNDING SCREW                 |
| 21    | PC030031    | 4    | ADJUSTABLE LEG                                 |
| 22    | 006199-000  | 1    | SPACER, BOT, 30, GSC                           |
| 23    | 019359-000  | 1    | KICKPLATE, 30 GAS DESG RNG, SS                 |
| 24    | 005280-000  | 1    | DISCONNECT BRKT                                |
| 25    | 013660-000  | 1    | INSULATION, PNL, SIDE, LH                      |
| 26    | 019176-000  | 1    | BRACKET, SIDE, LH                              |
| 27    | 014645-000  | 1    | BRACKET, TRAY                                  |
| 28    | 015836-000  | 1    | BRACKET, SOLENOID, DCCG130-4B                  |
| 29    | 009112-000  | 1    | VALVE, SOL, DOUBLE                             |
| 30    | 003860-000  | 26   | NO.10-18 X .500 FASTNR,SCR,HXWH,STL,ZPLT       |
| 31    | 014765-000  | 1    | PANEL, SIDE, DESIGNER, LH, SS                  |



| Ref # | Part Number | Qty. | Description                              |
|-------|-------------|------|--|
| 1     | 015931-000  | 1    | ISLAND TRIM ASM, 30 DESIGNER             |
| 2     | 014204-000  | 1    | PANEL, BACK, OTR, 30                     |
| 3     | 004285-000  | 1    | INSULATION, FOIL-BACKED,4X5              |
| 4     | 003860-000  | 9    | NO.10-18 X .500 FASTNR,SCR,HXWH,STL,ZPLT |



| Ref # | Part Number    | Qty. | Description  |
|-------|----------------|------|--|
| 1     | 000042-000     | 1    | 30 DOOR GASKET   |
| 2     | 014926-000     | 1    | PLUG, DOOR, ASM, DESIGNER, 30  |
| 3     | 014261-000     | 1    | LINER, DOOR, ASM, BLUE PORCELAIN   |
| 4     | 005475-000     | 1    | PANEL, INSL, DOOR, LINER   |
| 5     | 007583-000     | 2    | BRACKET, GLASS   |
| 6     | 008276-000     | 1    | HINGE, DOOR, VDSC18-PURPLE SPRING  |
| 7     | 015865-000     | 1    | COVER, SCREW, DOOR, DCCG130-4B   |
| 8     | PD010003       | 2    | 10-24 X 1/2 PH.TR.HD.SERD.M.S.   |
| 9     | 019173-000     | 2    | BRACKET, DESIGNER GAS  |
| 10    | 008971-000     | 2    | SPACER, DOOR, HANDLE   |
| 11    | 013676-000     | 1    | GLASS, DOOR SKIN, DESIGNER RANGE   |
| 12    | NON REPLACABLE | 1    | LINER  |
| 13    | 014194-000     | 1    | 3M VHB TAPE, 4991  |
| 14    | NON REPLACABLE | 1    | LINER  |
| 15    | PD020032       | 3    | SRW-8(A)X3/8PH.WFR HD 7/16DIAXNICL   |
| 16    | 013700-000     | 1    | 2.75 DESIGNER LOGO WITH PINS   |
| 17    | 009602-000     | 1    | HANDLE, ASM  |
| 18    | NON REPLACABLE | 4    | LINER  |
| 19    | 008974-000     | 3    | SCREW 10 - 32 X 3/4 SLOT HEX WASHER  |
| 20    | PD020063       | 2    | SCREW-NO.8(A) X 3/8PH WFR HD/BK OXID   |
| 21    | PD020014       | 9    | 10X3/4 PH TR HD SMS  |
| 22    | 013290-000     | 1    | HINGE, DOOR, VGCC36 - PINK SPRING  |
| 23    | PE060039       | 1    | GLASS-HEAT TREATED (HB2) VDSC<br>(NOT FIELD REPLACEABLE - MUST ORDER SKIN,DOOR,AS... |
| NI    | 013679-000     | 1    | SKIN, DOOR, ASM  |
| NI    | 016961-002     | 1    | SKIN,DOOR,ASM, 30 DES BK   |
| NI    | 016961-003     | 1    | SKIN,DOOR,ASM, 30 DES BT   |
| NI    | 016961-004     | 1    | SKIN,DOOR,ASM, 30 DES SG   |
| NI    | 016961-005     | 1    | SKIN,DOOR,ASM, 30 DES GG   |
| NI    | 016961-006     | 1    | SKIN,DOOR,ASM, 30 DES WH   |
| NI    | 016961-008     | 1    | SKIN,DOOR,ASM, 30 DES BU   |
| NI    | 016961-009     | 1    | SKIN,DOOR,ASM, 30 DES LE   |
| NI    | 016961-010     | 1    | SKIN,DOOR,ASM, 30 DES MJ   |
| NI    | 016961-012     | 1    | SKIN,DOOR,ASM, 30 DES VB   |
| NI    | 016961-013     | 1    | SKIN,DOOR,ASM, 30 DES CB   |
| NI    | 016961-015     | 1    | SKIN,DOOR,ASM, 30 DES PL   |
| NI    | 016961-016     | 1    | SKIN,DOOR,ASM, 30 DES CH   |
| NI    | 016961-017     | 1    | SKIN,DOOR,ASM, 30 DES TP   |
| NI    | 016961-018     | 1    | SKIN,DOOR,ASM, 30 DES CW   |
| NI    | 016961-019     | 1    | SKIN,DOOR,ASM, 30 DES OG   |
| NI    | 016961-020     | 1    | SKIN,DOOR,ASM, 30 DES GM   |
| NI    | 016961-021     | 1    | SKIN,DOOR,ASM, 30 DES SA   |
| NI    | 016961-022     | 1    | SKIN,DOOR,ASM, 30 DES SE   |
| NI    | 016961-023     | 1    | SKIN,DOOR,ASM, 30 DES IB   |
| NI    | 016961-024     | 1    | SKIN,DOOR,ASM, 30 DES AR   |
| NI    | 016961-025     | 1    | SKIN,DOOR,ASM, 30 DES RR   |
| NI    | 016961-026     | 1    | SKIN,DOOR,ASM, 30 DES PM   |
| NI    | 016961-027     | 1    | SKIN,DOOR,ASM, 30 DES MS   |
| NI    | 013689-000     | 1    | DOOR, ASM, DCCG130   |
| NI    | 016962-002     | 1    | DOOR,ASM, 30 DES BK  |
| NI    | 016962-003     | 1    | DOOR,ASM, 30 DES BT  |
| NI    | 016962-004     | 1    | DOOR,ASM, 30 DES SG  |
| NI    | 016962-005     | 1    | DOOR,ASM, 30 DES GG  |
| NI    | 016962-006     | 1    | DOOR,ASM, 30 DES WH  |
| NI    | 016962-008     | 1    | DOOR,ASM, 30 DES BU  |
| NI    | 016962-009     | 1    | DOOR,ASM, 30 DES LE  |
| NI    | 016962-010     | 1    | DOOR,ASM, 30 DES MJ  |
| NI    | 016962-012     | 1    | DOOR,ASM, 30 DES VB  |
| NI    | 016962-013     | 1    | DOOR,ASM, 30 DES CB  |
| NI    | 016962-015     | 1    | DOOR,ASM, 30 DES PL  |

| Ref # | Part Number | Qty. | Description         |
|-------|-------------|------|---------------------|
| NI    | 016962-015  | 1    | DOOR,ASM, 30 DES PL |
| NI    | 016962-016  | 1    | DOOR,ASM, 30 DES CH |
| NI    | 016962-017  | 1    | DOOR,ASM, 30 DES TP |
| NI    | 016962-018  | 1    | DOOR,ASM, 30 DES CW |
| NI    | 016962-019  | 1    | DOOR,ASM, 30 DES OG |
| NI    | 016962-020  | 1    | DOOR,ASM, 30 DES GM |
| NI    | 016962-021  | 1    | DOOR,ASM, 30 DES SA |
| NI    | 016962-022  | 1    | DOOR,ASM, 30 DES SE |
| NI    | 016962-023  | 1    | DOOR,ASM, 30 DES IB |
| NI    | 016962-024  | 1    | DOOR,ASM, 30 DES AR |
| NI    | 016962-025  | 1    | DOOR,ASM, 30 DES RR |
| NI    | 016962-026  | 1    | DOOR,ASM, 30 DES PM |
| NI    | 016962-027  | 1    | DOOR,ASM, 30 DES MS |

*No Image  
Available*

| Ref # | Part Number | Qty. | Description  |
|-------|-------------|------|--|
| NI    | 001754-000  | 1    | HARNESS POWER DISCONNECT                             |
| NI    | PE070036    | 1    | TIE WRAP   |
| NI    | PE070889    | 1    | IRIS HARNESS - 30<br>(BEFORE 01/01/11)               |
| NI    | 023341-000  | 1    | IRIS HARNESS 24, 30<br>(ON OR AFTER 01/01/11)        |
| NI    | 020927-000  | 1    | BOTTOM WIRE HARNESS<br>(BEFORE 01/01/11)             |
| NI    | 026020-000  | 1    | HARNESS, WIRING, DCCG1301<br>(ON OR AFTER 01/01/11)  |
| NI    | 006765-000  | 1    | BROIL IGNITOR WIRE ASM<br>(ON OR AFTER 01/01/11)     |
| NI    | 006698-000  | 1    | GRIDDLE ELECTRODE WIRE<br>(BEFORE 01/01/11)          |
| NI    | 024607-000  | 1    | WIRE, GRDL, ELECTRODE, ASM<br>(ON OR AFTER 01/01/11) |