

This Owner's Manual is provided and hosted by [Appliance Factory Parts](#).



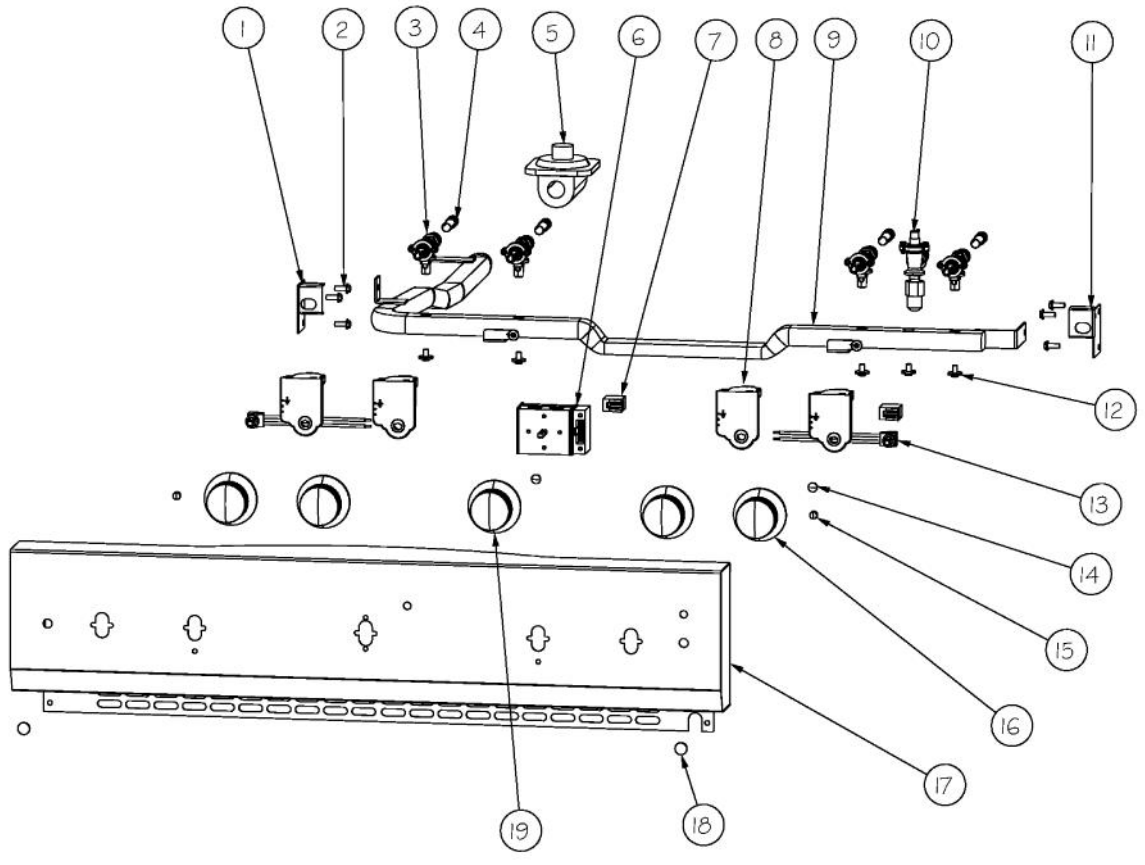
# VIKING DCCG130-4B Owner's Manual

[Shop genuine replacement parts for VIKING  
DCCG130-4B](#)

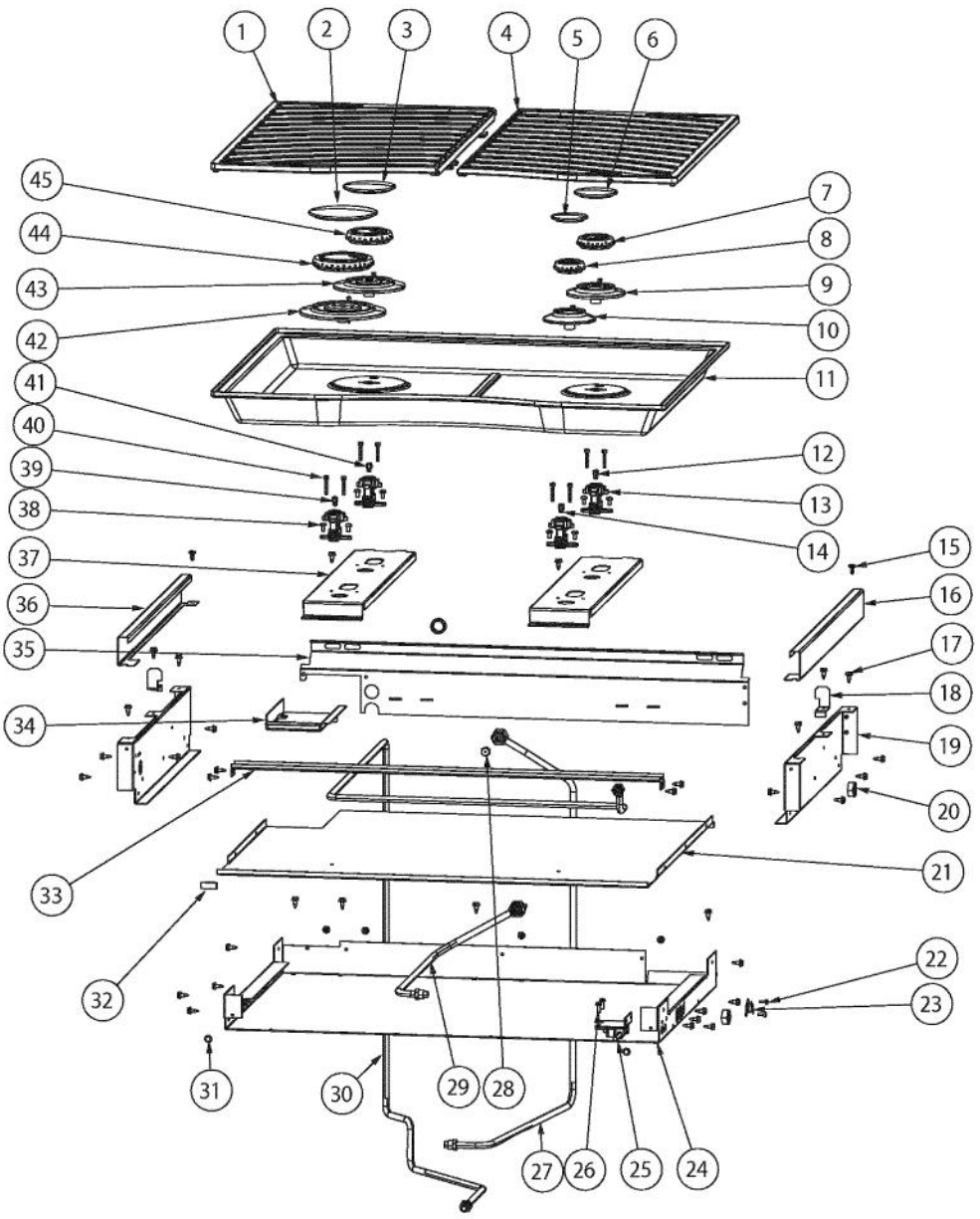


[Find Your VIKING Range Hoods Parts - Select From 411 Models](#)

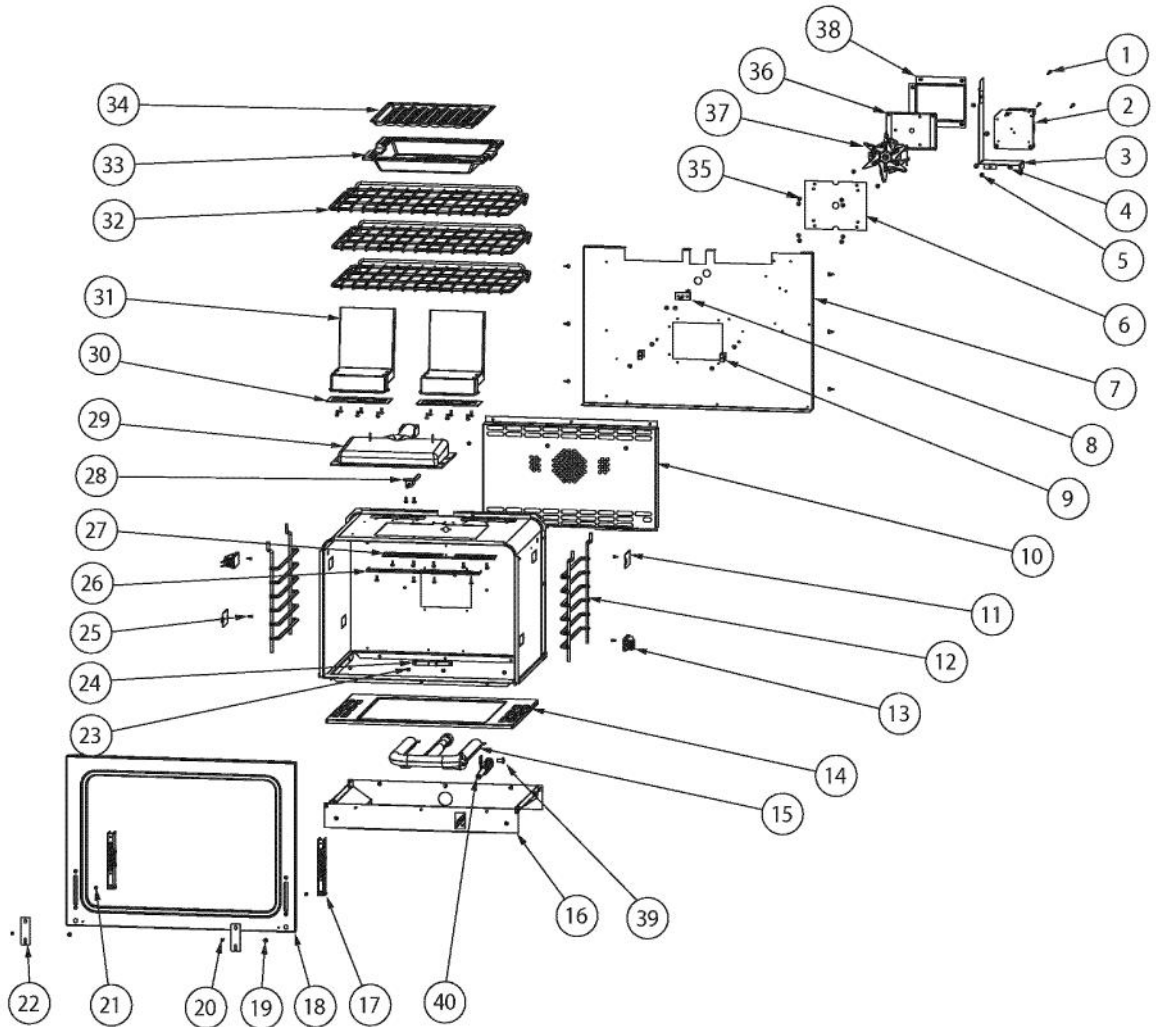
----- Manual continues below -----



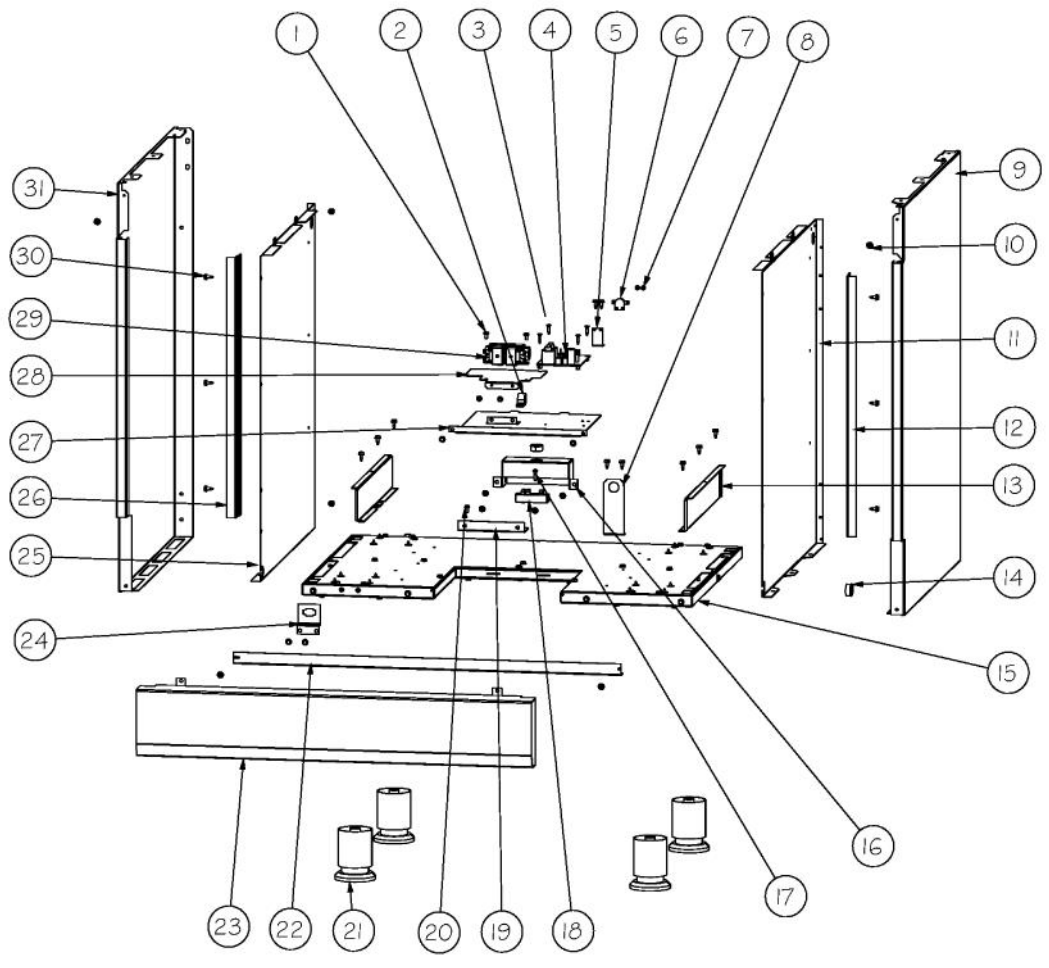
Ref #	Part Number	Qty.	Description
1	015990-000	1	BRACKET, LT, LF, DCCG130-4B
2	PD020048	6	NO.10 X 1/2 TEK 410 SS SCREW
3	PA010157	4	SUB TO 003515-000 - RANGE TOP BURNER VALVE
4	PB020198	4	20 FLEX TUBING
5	023883-000	1	REGULATOR, PRSS, NAT, 5, DESIGNER
NI	023884-000	1	REGULATOR, PRSS, L.P., 10 DESIGNER
6	012235-000	1	ELECTRONIC THERMOSTAT - 2 POS. W/O LEADS
7	015170-000	2	HOUSING, LIGHT, BLUE NEON, 125V
8	PA020058	4	IRIS SINGLE SPARK MODULE
9	015280-000	1	MANIFOLD, 30 DESIGNER RANGE
NI	002926-000	1	GAS MANIFOLD, REDESIGN
10	PB030007	1	SHUT OFF VALVE
11	014247-000	1	BRACKET, LT, RT, DCCG130-4B
12	PD010012	5	VALVE BOLT 1/4-20 UNC-2B 5/16 M.S.
13	PE050076	2	DESIGNER OVEN LIGHT SWITCH
14	015174-000	2	LENS, BLUE
15	PA010093	2	DESIGNER OVEN LT SWITCH KNOB
16	PA010163	4	DGRT KNOB-CHROME W/BLACK SLEEVE
17	013671-2211	1	CONTROL PANEL ASM, DCCG130-4B
18	PD040004	2	GROMMET BUMPER
19	014489-000	1	KNOB, OVEN



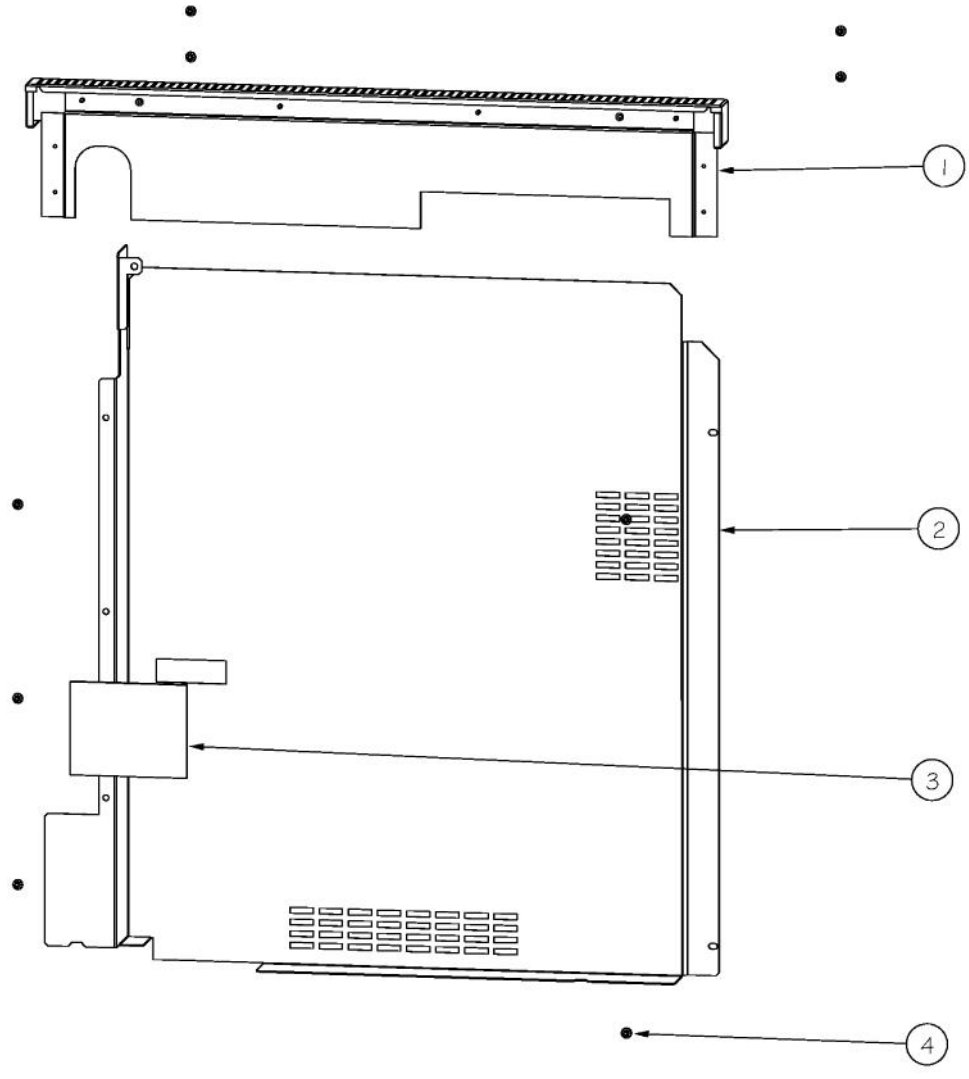
Ref #	Part Number	Qty.	Description
1	016476-000	1	LEFT GRATE, 30 DESIGNER RANGE
2	PA080083	1	D BURNER CAP XMATTE BLACKX
3	PA080107	1	DGRT-C BURNER CAP- BLACK
4	016477-000	1	RIGHT GRATE, 30 DESIGNER RANGE
5	PA080103	1	DGRT-A BURNER CAP- BLACK
6	PA080105	1	DGRT-B BURNER CAP- BLACK
7	PA080100	1	DGRT-B COMPLETE BURNER HEAD ASSEMBLY
8	PA080099	1	DGRT-A COMPLETE BURNER HEAD ASSEMBLY
9	PB050071	1	B-BASE
10	PB050072	1	A-BASE
11	E91011410BK	1	BURNER PAN, DGRT300 XBKX
11	B21011410	1	BURNER PAN - SS, DGRT300
12	PB040236	1	NO.55 NAT
NI	PB040204	1	NO.67 LP
13	PB050067	3	JETHOLDER
14	PB040200	1	NO.57 ORIFICE - LP
NI	PB040275	1	NO.70 ORIFICE - LP
15	003801-000	1	SHOULDER SCREW, NO.10
16	013986-000	1	TRIM, SIDE, RT D130
17	003860-000	21	NO.10-18 X .500 FASTNR,SCR,HXWH,STL,ZPLT
18	015106-000	2	SIDE TRIM SUPPORT
19	013663-000	2	BURNER BOX, SIDE, RT
20	PD040005	3	SNAP BUSHING - 7/8
21	013670-000	1	BURNER BOX, DCCG130
22	PD020067	1	NO.6 X 3/8 PAN PHIL. TEK SS
23	PJ030022	1	HIGH LIMIT SWITCH
24	013662-000	1	CAVITY, TOP, DCCG130-4B
25	PE050208	1	DOOR SWITCH
26	PD020060	1	10 X 1/2 (5/16)HEX WSHR HD.(T)A
27	014789-000	1	TUBING, BROIL ASM
28	PB040026	1	IR BURNER ORIFICE - NO.48 NAT.
NI	PB040027	1	IR BUR.SPUD ORF. - NO.56 LP
29	014790-000	1	TUBING, BAKE (NAT)
NI	014791-000	1	TUBING, BAKE, LP
30	019343-000	1	TUBING, FLEX 80
31	PD020032	2	SRW-8(A)X3/8PH.WFR HD 7/16DIAXNICL
32	PB070058	1	COOKTOP GASKET-(VGSU101)
33	014196-000	1	SUPPORT, PAN, DESIGNER
34	014199-000	1	COVER, REGULATOR BASE
35	014540-000	1	SUPPORT,BURNER BOX, RR, DCCG130
36	014543-000	1	TRIM, SIDE, LF, DESIGNER
37	014202-000	2	SUPPORT, ORIFICE HOLDER
38	PD020004	8	10X3/8PH.HD.TYPE 25 REPL PD040125
NI	PB040254	1	NO.49 NAT
39	PB040274	1	NO.58 LP
40	PD020159	8	DGSU BURNER BASE SCREW
NI	PB040255	1	NO.52 NAT
41	PB040271	1	NO.60 LP
42	PB050069	1	D-BASE
43	PB050070	1	C-BASE
44	PA080102	1	DGRT-D COMPLETE BURNER HEAD ASSEMBLY
45	PA080101	1	DGRT-C COMPLETE BURNER HEAD ASSEMBLY



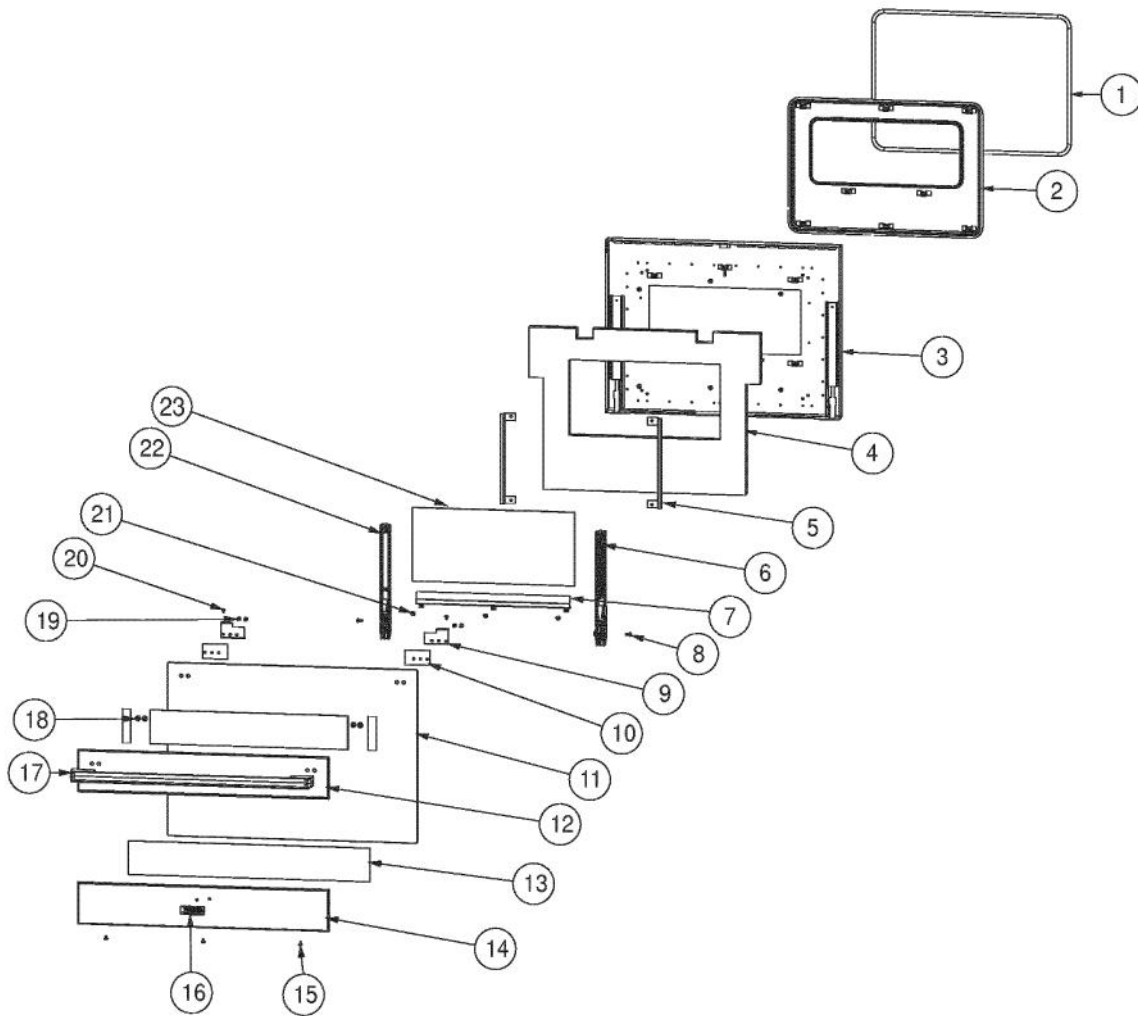
Ref #	Part Number	Qty.	Description
1	017177-000	3	SCREW, PHIL, PAN, AB TIP
2	003187-000	1	FLATPAK FAN MOTOR
3	016458-000	1	CHANNEL, AIR FLOW
4	PD040036	3	BUSHING - 7/16O.D. X 1/4TCK XSSX
5	003860-000	10	NO.10-18 X .500 FASTNR,SCR,HXWH,STL,ZPLT
6	A1002596	1	CONVECTION FAN COVER (VDSC)
7	004626-000	1	PANEL, BACK, INSULATION, 30
8	007008-000	1	RTD PROBE
9	A2001361	2	BACK SPACER (VGSC/VGSS)
10	014754-000	1	COVER, FAN, ASM, 30 GAS, BLUE PORCELAIN
11	014752-000	2	COVER, LT, BLUE PORCELAIN
12	PB060030	2	RACK SUPT REPL PB060010
13	005311-000	2	120V/25W HALOGEN LIGHT
14	014922-000	1	OVEN BOTTOM PAN ASM (VGSC306)
15	005329-000	1	BURNER, OVEN, ASM
NI	005330-000	1	BURNER, OVEN, ASM (LP)
16	014748-000	1	BURNER PAN ASM
17	031679-000	1	RECEPTACLE, HINGE
18	014756-000	1	FRAME, ASM, FRONT, 30 GAS, BLUE PORCELAIN
19	PD020014	2	10X3/4 PH TR HD SMS
20	PD020061	2	NO.8 X 3/4 FLAT HD TEK. SS.
21	PD020232	2	NO.8 X 3/4 PH PAN HEAD TEK SCREW (BLACK OXIDE)
22	007278-000	2	ARM HINGE CLIP
23	M0210443	4	SCREW-E SM
24	A2004428	1	REAR BOTTOM BRCKT (VGSC306)
25	PD020067	4	NO.6 X 3/8 PAN PHIL. TEK SS
26	B2002261	1	FRONT I/R BROILER SUPPORT BRACKET
27	B2005589	1	REAR BROILER BRACKET
28	PB040171	1	BROIL IGNITION ELECTRODE
29	G3001876	1	IR BURNER ASSY (VGSC/RC) N/S
30	019162-000	2	EXHAUST GASKET
31	014870-000	2	EXHAUST, ASM, GAS, DESIGNER
32	PB060044	3	OVEN RK VDSC30/48RH REPL PB060019
33	014923-000	1	PAN, BROILER, BLUE PORCELAIN
34	014924-000	1	INSERT, BROILER PAN, BLUE PORCELAIN
35	PD020048	40	NO.10 X 1/2 TEK 410 SS SCREW
36	A2002595	1	CONVECTION FAN BOX (VDSC)
37	PE050057	1	CONVECTION FAN (VGSC306)
38	A2008467	1	INSULATION SHIELD
39	PD020048	1	NO.10 X 1/2 TEK 410 SS SCREW
40	PB040170	1	BAKE IGNITION ELECTRODE
NI	014751-000	1	OVEN CVTY, ASM, 30 GAS, BLUE PORCELAIN



Ref #	Part Number	Qty.	Description
1	PD020004	4	10X3/8PH.HD.TYPE 25 REPL PD040125
2	PD030109	1	INSULATED CLAMP
3	PD020061	4	NO.8 X 3/4 FLAT HD TEK. SS.
4	PA020056	1	TYTRONICS DSI MODULE
NI	034880-000	1	DSI MODULE HEAT SHIELD KIT
5	A20014089	1	DISC BRACKET
6	PJ030039	1	BI-METAL THERMOSTAT 275 DEGREES
7	PD020067	1	NO.6 X 3/8 PAN PHIL. TEK SS
8	014642-000	1	BRACKET, BAKE ORIFICE
9	014764-000	2	PANEL, SIDE, DESIGNER, RH, SS
10	003801-000	4	SHOULDER SCREW, NO.10
11	013659-000	2	INSULATION, PNL, SIDE, RH
12	019175-000	2	BRACKET, SIDE, RH
13	013661-000	2	BRACKET, SUPPORT
14	PD040005	2	SNAP BUSHING - 7/8
15	015831-000	1	BASE ASM
16	031961-000	1	COVER, TERM. BLOCK
17	PD020232	1	NO.8 X 3/4 PH PAN HEAD TEK SCREW (BLACK OXIDE)
18	007400-000	1	BLOCK, TERMINAL
19	007484-000	1	TERMINAL, BLOCK, BRACKET
20	PD020010	1	10 X 3/8 GREEN GROUNDING SCREW
21	PC030031	4	ADJUSTABLE LEG
22	006199-000	1	SPACER, BOT, 30, GSC
23	019359-000	1	KICKPLATE, 30 GAS DESG RNG, SS
23	019360-002	1	KICKPLATE, 30 DESG RNG, BK
23	019360-003	1	KICKPLATE, 30 DESG RNG, BT
23	019360-004	1	KICKPLATE, 30 DESG RNG, SG
23	019360-005	1	KICKPLATE, 30 DESG RNG, GG
23	019360-006	1	KICKPLATE, 30 DESG RNG, WH
23	019360-008	1	KICKPLATE, 30 DESG RNG, BU
23	019360-009	1	KICKPLATE, 30 DESG RNG, LE
23	019360-010	1	KICKPLATE, 30 DESG RNG, MJ
23	019360-012	1	KICKPLATE, 30 DESG RNG, VB
23	019360-013	1	KICKPLATE, 30 DESG RNG, CB
23	019360-015	1	KICKPLATE, 30 DESG RNG, PL
23	019360-016	1	KICKPLATE, 30 DESG RNG, CH
23	019360-017	1	KICKPLATE, 30 DESG RNG, TP
23	019360-018	1	KICKPLATE, 30 DESG RNG, CW
23	019360-019	1	KICKPLATE, 30 DESG RNG, OG
23	019360-020	1	KICKPLATE, 30 DESG RNG, GM
23	019360-021	1	KICKPLATE, 30 DESG RNG, SA
23	019360-022	1	KICKPLATE, 30 DESG RNG, SE
23	019360-023	1	KICKPLATE, 30 DESG RNG, IB
23	019360-024	1	KICKPLATE, 30 DESG RNG, AR
23	019360-025	1	KICKPLATE, 30 DESG RNG, RR
23	019360-026	1	KICKPLATE, 30 DESG RNG, PM
23	019360-027	1	KICKPLATE, 30 DESG RNG, MS
24	005280-000	1	DISCONNECT BRKT
25	013660-000	1	INSULATION, PNL, SIDE, LH
26	019176-000	1	BRACKET, SIDE, LH
27	024416-000	1	TRAY, MTG, DESIGNER
28	024415-000	1	TRAY, MTG, DESIGNER
29	009112-000	1	VALVE, SOL, DOUBLE
30	003860-000	26	NO.10-18 X .500 FASTNR,SCR,HXWH,STL,ZPLT
31	014765-000	1	PANEL, SIDE, DESIGNER, LH, SS



Ref #	Part Number	Qty.	Description
1	015931-000	1	ISLAND TRIM ASM, 30 DESIGNER
2	032238-000	1	PANEL, BACK
3	004285-000	1	INSULATION, FOIL-BACKED,4X5
4	003860-000	9	NO.10-18 X .500 FASTNR,SCR,HXWH,STL,ZPLT



Ref #	Part Number	Qty.	Description
1	000042-000	1	30 DOOR GASKET
2	014926-000	1	PLUG, DOOR, ASM, DESIGNER, 30
3	014261-000	1	LINER, DOOR, ASM, BLUE PORCELAIN
4	005475-000	1	PANEL, INSL, DOOR, LINER
5	007583-000	2	BRACKET, GLASS
6	008276-000	1	HINGE, DOOR, VDSC18-PURPLE SPRING
7	015865-000	1	COVER, SCREW, DOOR, DCCG130-4B
8	PD010003	2	10-24 X 1/2 PH.TR.HD.SERD.M.S.
9	019173-000	2	BRACKET, DESIGNER GAS
10	008971-000	2	SPACER, DOOR, HANDLE
11	013676-000	1	GLASS, DOOR SKIN, DESIGNER RANGE
12	NON REPLACABLE	1	LINER
13	014194-000	1	3M VHB TAPE, 4991
14	NON REPLACABLE	1	LINER
15	PD020032	3	SRW-8(A)X3/8PH.WFR HD 7/16DIAXNICL
16	013700-000	1	2.75 DESIGNER LOGO WITH PINS
17	009602-000	1	HANDLE, ASM
18	NON REPLACABLE	4	LINER
19	008974-000	3	SCREW 10 - 32 X 3/4 SLOT HEX WASHER
20	PD020063	2	SCREW-NO.8(A) X 3/8PH WFR HD/BK OXID
21	PD020014	9	10X3/4 PH TR HD SMS
22	013290-000	1	HINGE, DOOR, VGCC36 - PINK SPRING
23	PE060039	1	GLASS-HEAT TREATED (HB2) VDSC (NOT FIELD REPLACEABLE - MUST ORDER SKIN, DOOR, AS...
NI	013679-000	1	SKIN, DOOR, ASM
NI	016961-002	1	SKIN,DOOR,ASM, 30 DES BK
NI	016961-003	1	SKIN,DOOR,ASM, 30 DES BT
NI	016961-004	1	SKIN,DOOR,ASM, 30 DES SG
NI	016961-005	1	SKIN,DOOR,ASM, 30 DES GG
NI	016961-006	1	SKIN,DOOR,ASM, 30 DES WH
NI	016961-007	1	SKIN, DOOR, ASM, 30 DES AL
NI	016961-008	1	SKIN,DOOR,ASM, 30 DES BU
NI	016961-009	1	SKIN,DOOR,ASM, 30 DES LE
NI	016961-010	1	SKIN,DOOR,ASM, 30 DES MJ
NI	016961-011	1	SKIN, DOOR, ASM, 30 DES FG
NI	016961-012	1	SKIN,DOOR,ASM, 30 DES VB
NI	016961-013	1	SKIN,DOOR,ASM, 30 DES CB
NI	016961-014	1	SKIN, DOOR, ASM, 30 DES EP
NI	016961-015	1	SKIN,DOOR,ASM, 30 DES PL
NI	016961-016	1	SKIN,DOOR,ASM, 30 DES CH
NI	016961-017	1	SKIN,DOOR,ASM, 30 DES TP
NI	016961-018	1	SKIN,DOOR,ASM, 30 DES CW
NI	016961-019	1	SKIN,DOOR,ASM, 30 DES OG
NI	016961-020	1	SKIN,DOOR,ASM, 30 DES GM
NI	016961-021	1	SKIN,DOOR,ASM, 30 DES SA
NI	016961-022	1	SKIN,DOOR,ASM, 30 DES SE
NI	016961-023	1	SKIN,DOOR,ASM, 30 DES IB
NI	016961-024	1	SKIN,DOOR,ASM, 30 DES AR
NI	016961-025	1	SKIN,DOOR,ASM, 30 DES RR
NI	016961-026	1	SKIN,DOOR,ASM, 30 DES PM
NI	016961-027	1	SKIN,DOOR,ASM, 30 DES MS
NI	013689-000	1	DOOR, ASM, DCCG130
NI	016962-002	1	DOOR,ASM, 30 DES BK
NI	016962-003	1	DOOR,ASM, 30 DES BT
NI	016962-004	1	DOOR,ASM, 30 DES SG
NI	016962-005	1	DOOR,ASM, 30 DES GG
NI	016962-006	1	DOOR,ASM, 30 DES WH
NI	016962-007	1	DOOR, ASM, 30 DES AL
NI	016962-008	1	DOOR,ASM, 30 DES BU
NI	016962-009	1	DOOR,ASM, 30 DES LE

Ref #	Part Number	Qty.	Description
NI	016962-009	1	DOOR,ASM, 30 DES LE
NI	016962-010	1	DOOR,ASM, 30 DES MJ
NI	016962-011	1	DOOR, ASM, 30 DES FG
NI	016962-012	1	DOOR,ASM, 30 DES VB
NI	016962-013	1	DOOR,ASM, 30 DES CB
NI	016962-014	1	DOOR, ASM, 30 DES EP
NI	016962-015	1	DOOR,ASM, 30 DES PL
NI	016962-016	1	DOOR,ASM, 30 DES CH
NI	016962-017	1	DOOR,ASM, 30 DES TP
NI	016962-018	1	DOOR,ASM, 30 DES CW
NI	016962-019	1	DOOR,ASM, 30 DES OG
NI	016962-020	1	DOOR,ASM, 30 DES GM
NI	016962-021	1	DOOR,ASM, 30 DES SA
NI	016962-022	1	DOOR,ASM, 30 DES SE
NI	016962-023	1	DOOR,ASM, 30 DES IB
NI	016962-024	1	DOOR,ASM, 30 DES AR
NI	016962-025	1	DOOR,ASM, 30 DES RR
NI	016962-026	1	DOOR,ASM, 30 DES PM
NI	016962-027	1	DOOR,ASM, 30 DES MS

*No Image  
Available*

Ref #	Part Number	Qty.	Description
1	001754-000	1	HARNESS POWER DISCONNECT
2	PE070036	1	TIE WRAP
NI	000647-000	2	IRIS IGNITOR WIRE, FRONT BURNER
NI	006766-000	2	IRIS IGNITOR WIRE, BACK BURNER