

This Owner's Manual is provided and hosted by [Appliance Factory Parts](http://www.appliancefactoryparts.com).



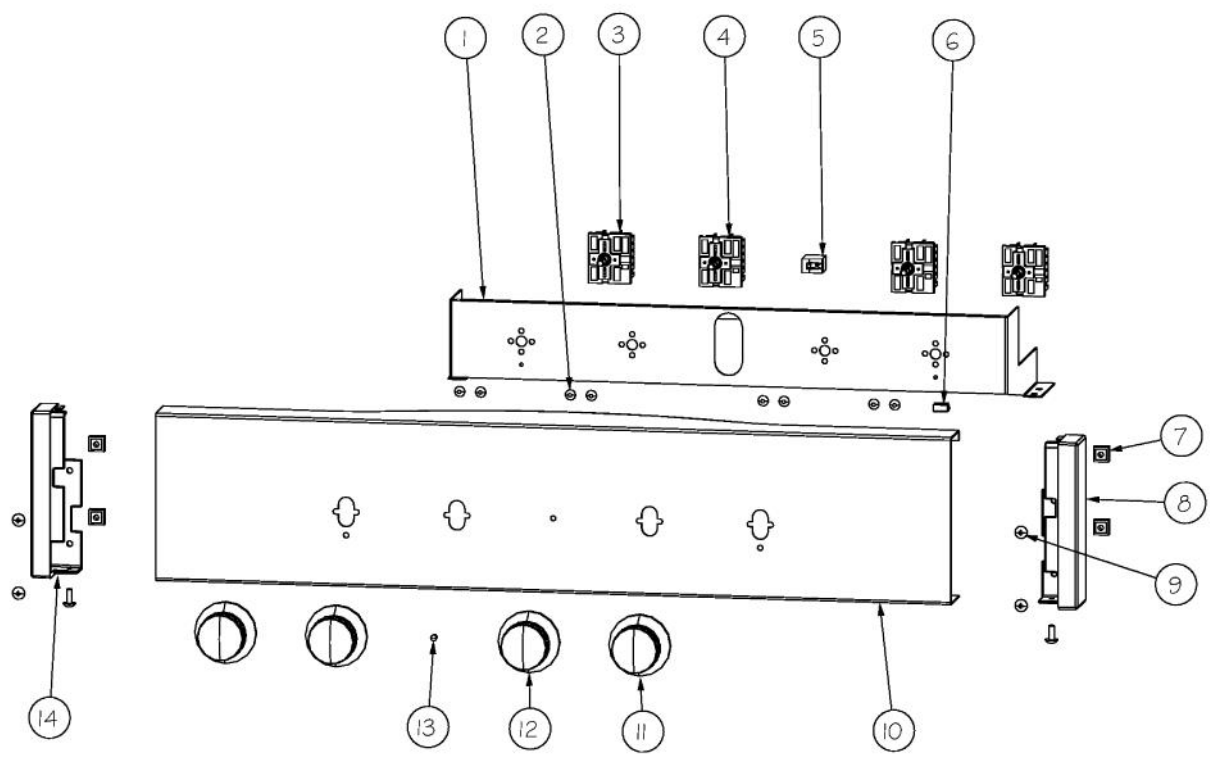
VIKING DERT302-4B Owner's Manual

**[Shop genuine replacement parts for VIKING
DERT302-4B](#)**

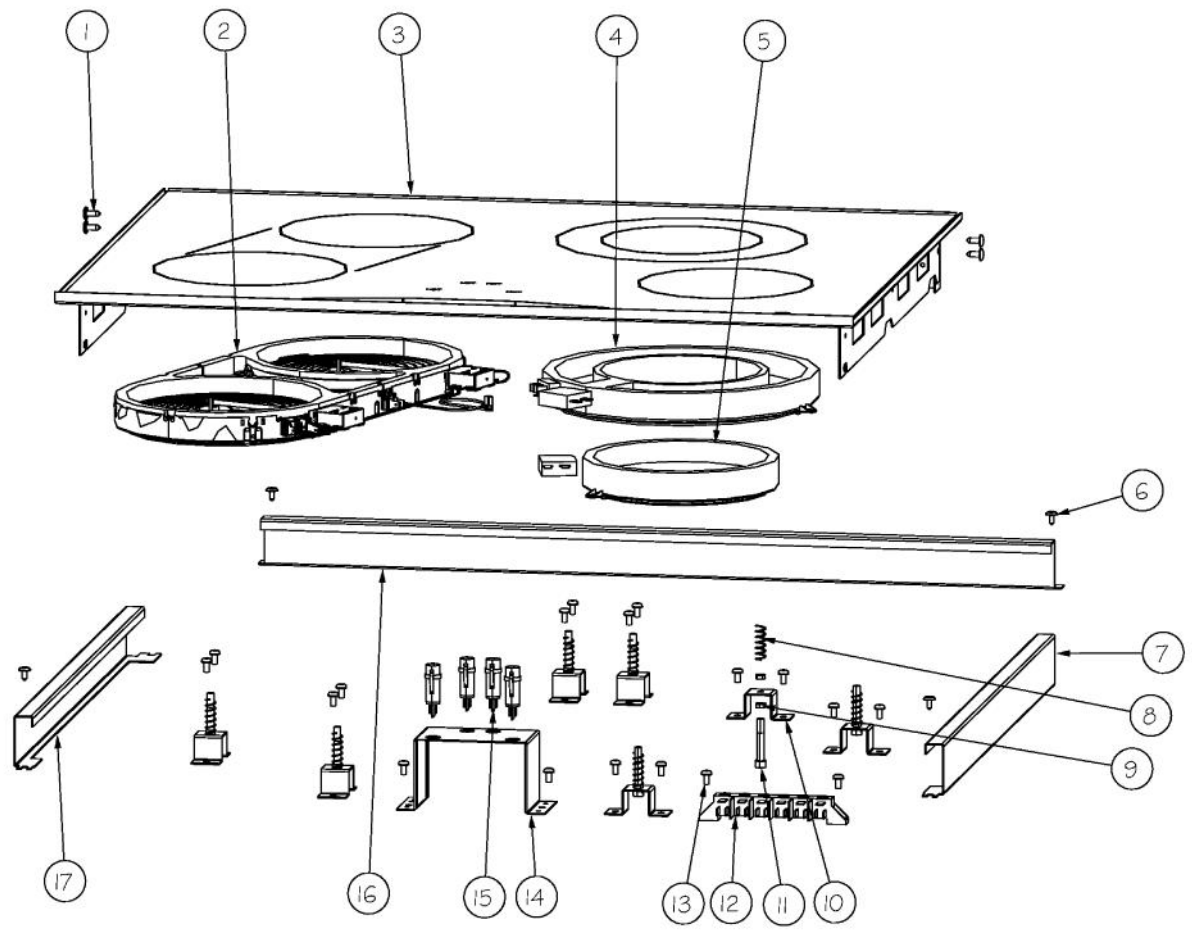


[Find Your VIKING Range Hoods Parts - Select From 411 Models](#)

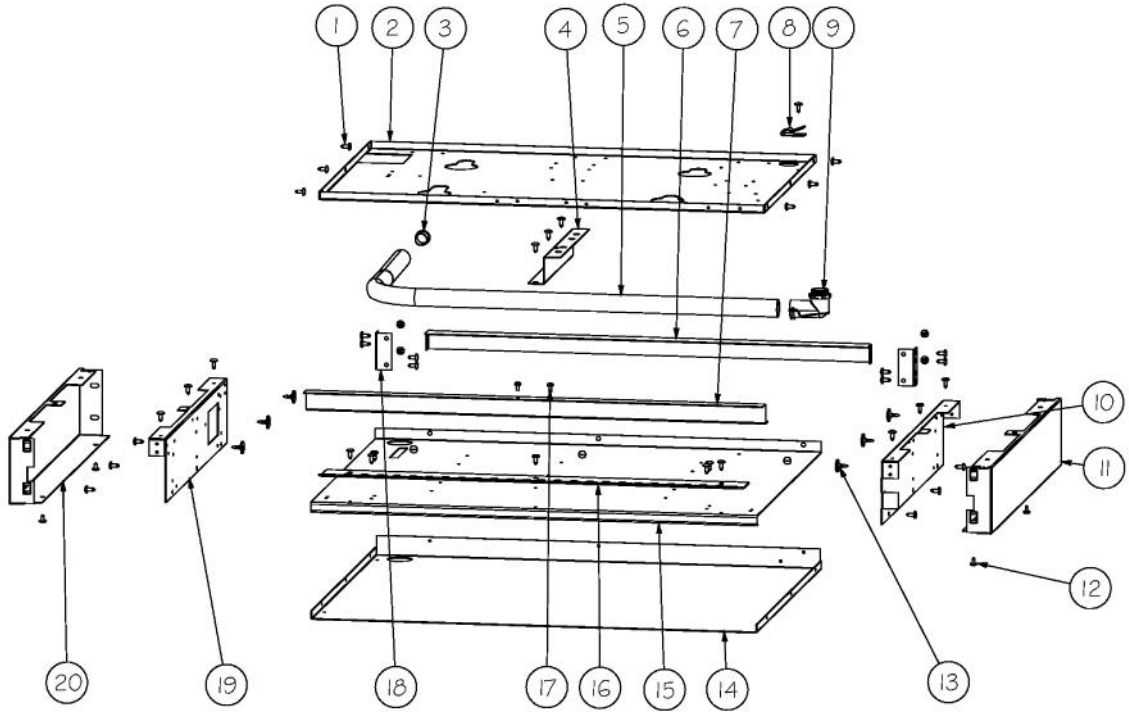
----- Manual continues below -----



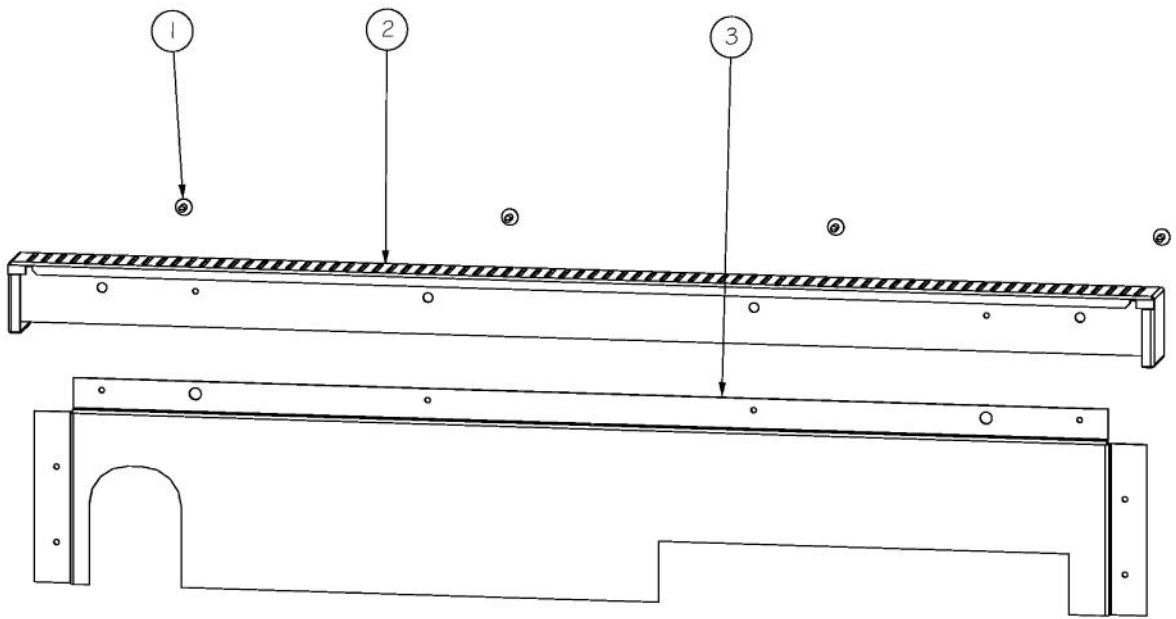
Ref #	Part Number	Qty.	Description
1	A20015496	1	SWITCH MOUNTING PLATE - 30
2	PD020044	8	NO.8-32 X 1/4 PH. TR. HD. M.S.
3	PJ030049	2	DOUBLE INFINITE SWITCH
4	PJ030028	2	DUAL INFINITE SWITCH
5	017582-000	1	LIGHT HOUSING, BLUE NEON
6	A20014923	1	CONTROL PANEL SPACER
7	PD030005	4	SELF RETAINING NUT
8	PE030141	1	CONTROL PANEL END CAP, RH DGRT
9	PD010003	6	10-24 X 1/2 PH.TR.HD.SERD.M.S.
10	016766-000	1	CONTROL PANEL-DERT302-4B W/GRAPHICS
11	PA010207	2	KNOB-CHROME W/BLACK SLEEVE
12	PA010209	2	KNOB - CHROME/BLK/DUAL INF.
13	017579-000	1	LENS, BLUE
14	PE030140	1	CONTROL PANEL END CAP, LH DGRT



Ref #	Part Number	Qty.	Description
1	PD020002	3	10 X 1/2 PH.TR.HD.SMS.
2	PJ020004	1	ELEMENT-(2)1800 X 800
3	G50013840BK	1	30 DERT TOP ASSY XBKX
NI	G50013840WH	1	GLASS TOP ASSEMBLY - WHITE GLASS
4	PJ020005	1	2500 ELEMENT
5	PJ020003	1	ELEMENT
6	PD020032	4	SRW-8(A)X3/8PH.WFR HD 7/16DIAXNICL
7	B20011270	1	SIDE TRIM, RH
8	PC010006	7	GUIDE SPRING DESU
9	PD040056	14	ELEMENT STUD NUT
10	A20014957	7	GUIDE MOUNTING BRACKET
11	PD010148	7	ELEMENT STUD
12	PE070231	1	TERMINAL BLOCK - 6 POLE (HEYCO)
13	PD020004	17	10X3/8PH.HD.TYPE 25 REPL PD040125
14	A2005723	1	DECU30 LIGHT BRACKET
15	PE050113	4	DECU INDICATOR LIGHT (SP-2185-BDPS)
16	B20013827	1	BACK TRIM, DERT300
17	B20011269	1	SIDE TRIM, LH



Ref #	Part Number	Qty.	Description
1	PD020002	44	10 X 1/2 PH.TR.HD.SMS.
2	A20011409	1	BURNER PAN SUPPORT DGRT30
3	PD040131	1	CONDUIT GROMMET (3/4)
4	A20013839	1	ELEMENT SUPPORT BRACE
5	PB020259	1	3/4 CONDUIT
6	A20016222	1	DERT301 REAR TOP SUPPORT
7	A20016221	1	DERT301 FRONT TOP SUPPORT
8	PD030062	1	.250 HI-LIMIT SWITCH CLAMP(VGSC306)
9	PB040259	1	90 DEG. 3/4 CONDUIT FITTING
10	A20011268	1	BURNER BOX SIDE, RH
11	B20011272	1	SIDE PANEL, RH
12	PD020032	4	SRW-8(A)X3/8PH.WFR HD 7/16DIAXNICL
13	PD020151	6	SHOULDER SCREW
14	A20014518	1	BURNER BOX BOTTOM
15	A20014519	1	INSULATION PANEL
16	A20013835	1	FINGER SHIELD 30
17	PD020004	2	10X3/8PH.HD.TYPE 25 REPL PD040125
18	A20013830	2	GLASS TRAY SIDE BRACKET
19	A20011267	1	BURNER BOX SIDE, LH
20	B20011271	1	SIDE PANEL, LH



Ref #	Part Number	Qty.	Description
1	PD020032	4	SRW-8(A)X3/8PH.WFR HD 7/16DIAXNICL
2	016597-000	1	ISLAND TRIM, DESIGNER RANGE
3	015909-000	1	ISLAND TRIM, BACK, DESIGNER