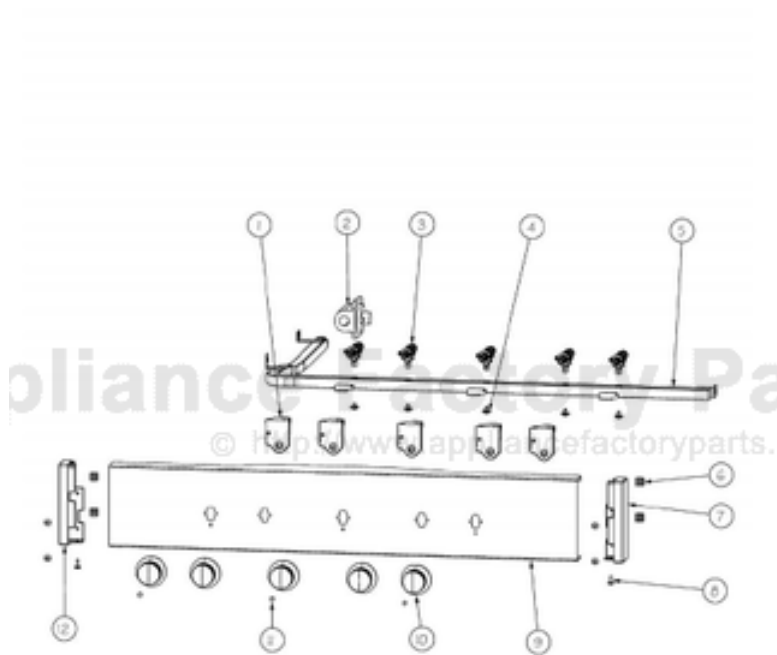


This Owner's Manual is provided and hosted by Appliance Factory Parts.



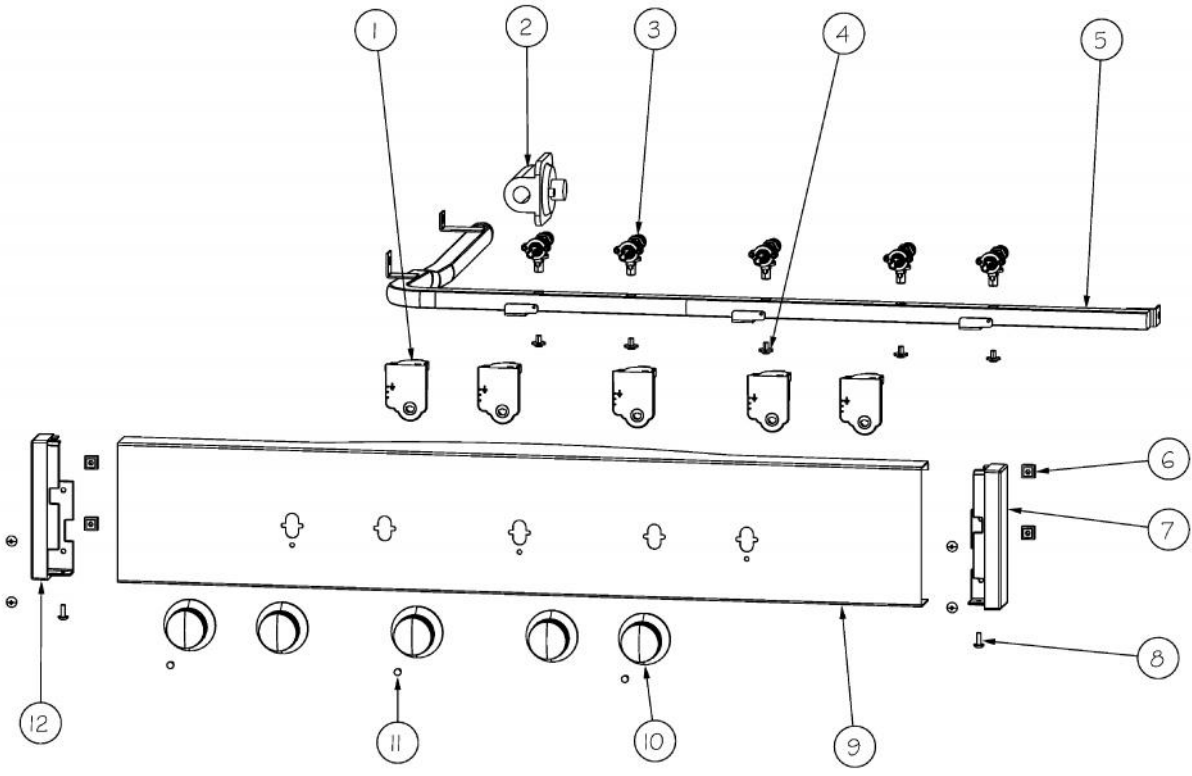
VIKING DGRT361-5B Owner's Manual

[Shop genuine replacement parts for VIKING
DGRT361-5B](#)

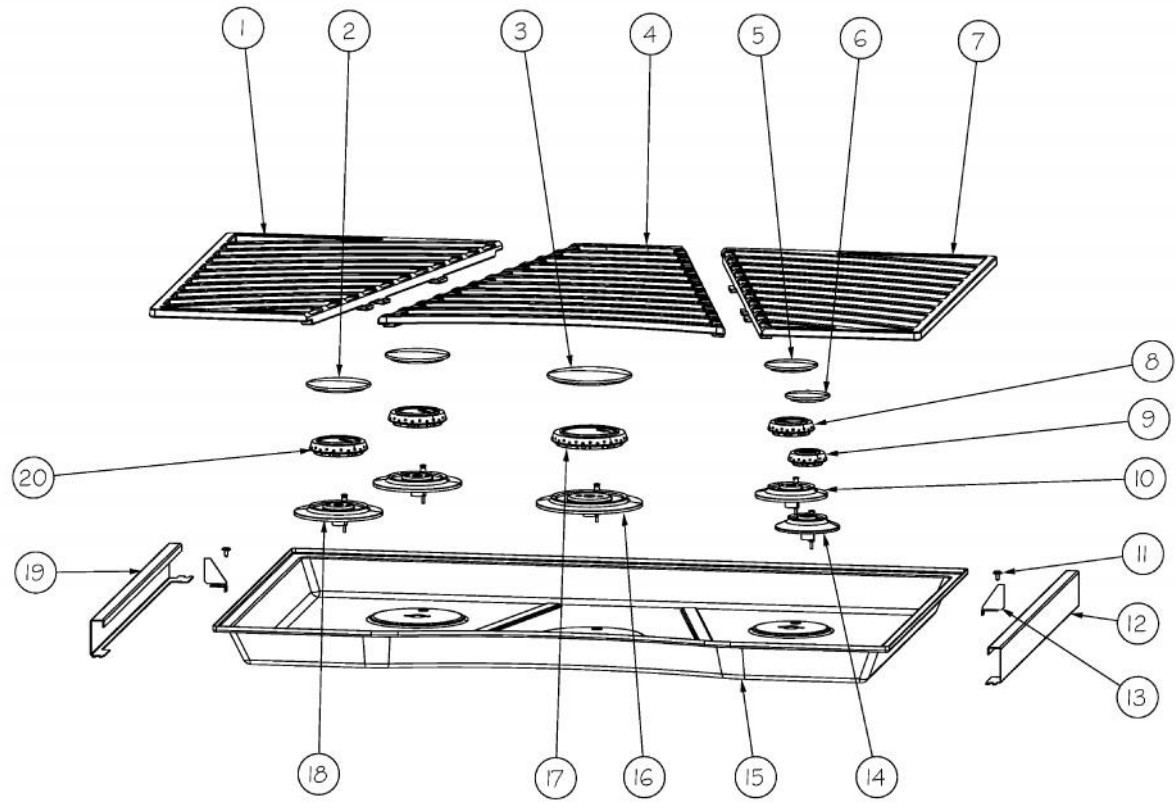


[Find Your VIKING Gas Range Parts - Select From 76 Models](#)

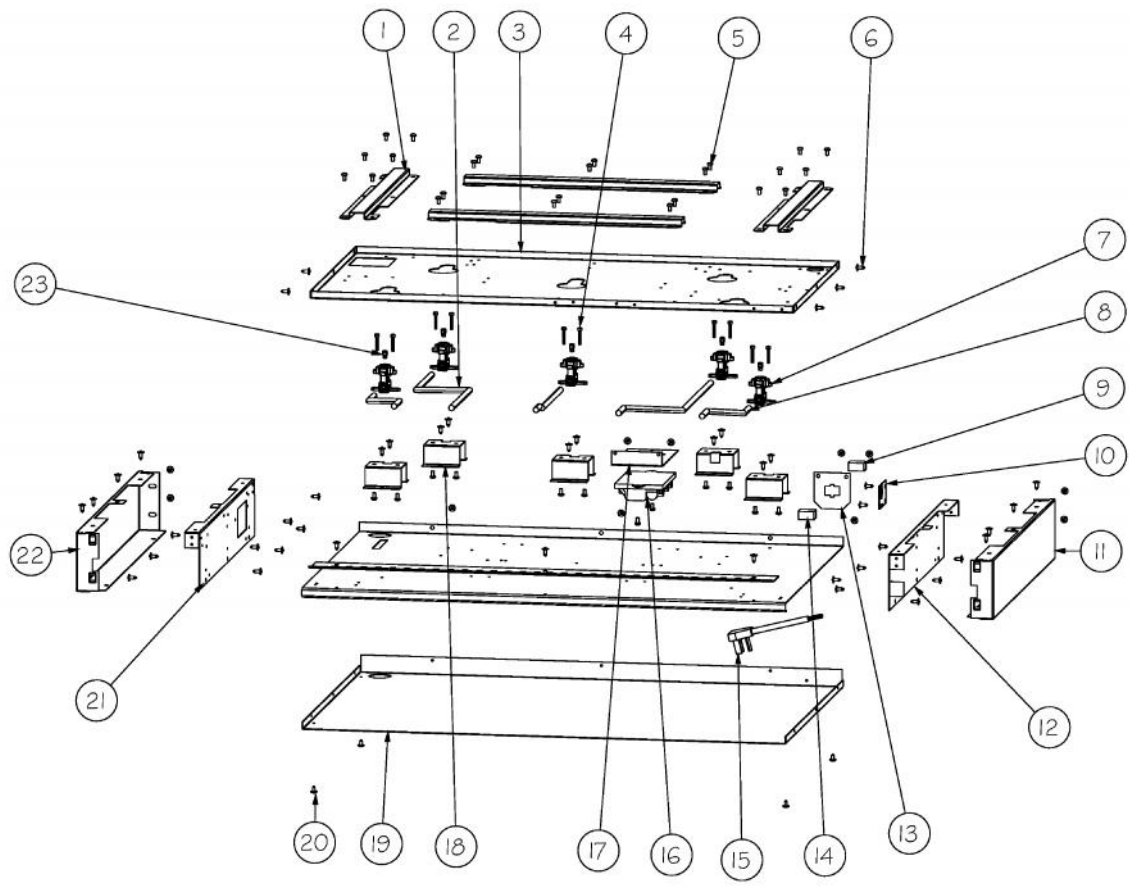
----- Manual continues below -----



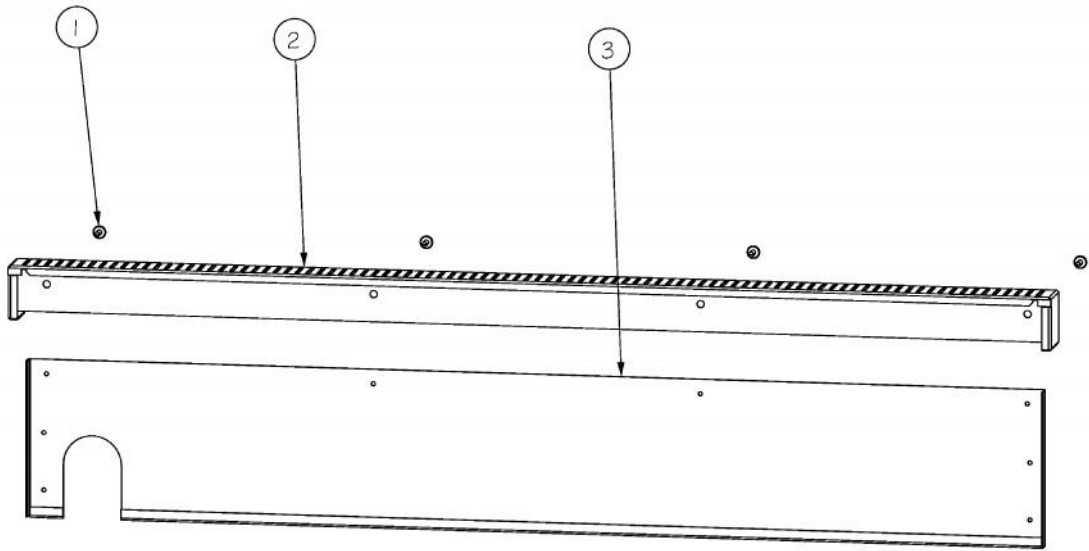
Ref #	Part Number	Qty.	Description
1	PA020058	5	IRIS SINGLE SPARK MODULE
2	PA070001	1	PRESSURE REGULATOR (NAT.)
3	PA010157	5	SUB TO 003515-000 - RANGE TOP BURNER VALVE
4	PD010012	5	VALVE BOLT 1/4-20 UNC-2B 5/16 M.S.
5	PA050101	1	DESIGNER RANGETOP MANIFOLD, 36
6	PD030005	4	SELF RETAINING NUT
7	PE030141	1	CONTROL PANEL END CAP, RH DGRT
8	PD010003	6	10-24 X 1/2 PH.TR.HD.SERD.M.S.
9	016765-000	1	CONTROL PANEL, DGRT361-5B W/GRAPHICS
10	PA010163	5	DGRT KNOB-CHROME W/BLACK SLEEVE
11	PD020067	3	NO.6 X 3/8 PAN PHIL. TEK SS
12	PE030140	1	CONTROL PANEL END CAP, LH DGRT



Ref #	Part Number	Qty.	Description
1	PA060100	1	LEFT GRATE, DGRT360 (BK)
2	PA080107	2	DGRT-C BURNER CAP- BLACK
3	PA080083	1	D BURNER CAP XMATTE BLACKX
4	PA060102	1	CENTER GRATE, DGRT360 (BK)
5	PA080105	1	DGRT-B BURNER CAP- BLACK
6	PA080103	1	DGRT-A BURNER CAP- BLACK
7	PA060104	1	RIGHT GRATE, DGRT360 (BK)
8	PA080100	1	DGRT-B COMPLETE BURNER HEAD ASSEMBLY
9	PA080099	1	DGRT-ACOMPLETE BURNER HEAD ASSEMBLY
10	PB050071	1	B-BASE
11	PD020032	2	SRW-8(A)X3/8PH.WFR HD 7/16DIAXNICL
12	B20011270	1	SIDE TRIM, RH
13	A20014958	2	DESIGNER SIDE TRIM SUPPORT
14	PB050072	1	A-BASE
15	B21011264	1	BURNER PAN DGRT360
NI	E91011264BK	1	BURNER PAN DGRT360 XBKX
NI	E91011264WH	1	BURNER PAN DGRT360 XWHX
NI	E91011264GG	1	BURNER PAN DGRT360 XGGX
NI	E91011264SG	1	BURNER PAN DGRT360 xSGx
16	PB050069	1	D-BASE
17	PA080102	1	DGRT-D COMPLETE BURNER HEAD ASSEMBLY
18	PB050070	2	C-BASE
19	B20011269	1	SIDE TRIM, LH
20	PA080101	2	DGRT-C COMPLETE BURNER HEAD ASSEMBLY



Ref #	Part Number	Qty.	Description
1	A20011280	4	BURNER PAN SPACER
2	PB020191	3	15 FLEX TUBE
3	A20011265	1	BURNER PAN SUPPORT
4	PD020159	10	DGSU BURNER BASE SCREW
5	PD020004	36	10X3/8PH.HD.TYPE 25 REPL PD040125
6	PD020002	53	10 X 1/2 PH.TR.HD.SMS.
7	PB050067	1	JETHOLDER
8	PB020190	2	10 FLEX TUBE
9	PA070007	1	LP TANK REGULATOR (VGBQ)
NI	000714-000	1	LP REGULATOR
10	A1001138	1	MANIFOLD BRKT
11	B20011272	1	SIDE PANEL, RH
12	A20011268	1	BURNER BOX SIDE, RH
13	A10011273	1	PLUG BRACKET
14	PE070070	1	DISCONNECT BLOCK XALX 770020-1
15	G4007440	1	SUPPLY CORD ASSY
16	PA020048	1	INVENSYS 0+6 RE-IGNITION SPARK MODULE
17	A20012110	1	SPARK MODULE BRKT.-VGRT362
18	A20013838	5	JET HOLDER SPACER
19	A20014533	1	36 BURNER BOX BOTTOM
20	PD020032	1	SRW-8(A)X3/8PH.WFR HD 7/16DIAXNICL
21	A20011267	1	BURNER BOX SIDE, LH
22	B20011271	1	SIDE PANEL, LH
23	PB040197	1	NO. 53 ORIFICE FOR SEALED BURNER
NI	PB040199	1	NATURAL ORIFICE NO.56
NI	PB040236	1	NO.55 NAT
NI	PB040254	1	NO.49 NAT
NI	PB040255	1	NO.52 NAT
NI	PB040270	1	NO.71 ORIFICE FOR SEALED BURNER
NI	PB040257	1	LP ORIFICE NO.66
NI	PB040272	1	NO.64 ORIFICE FOR SEALED BURNER
NI	PB040271	1	NO.60 LP
NI	PB040199	1	NATURAL ORIFICE NO.56



Ref #	Part Number	Qty.	Description
1	PD020046	4	NO.8 X 1/2 SCREWS
2	B30011275	1	ISLAND TRIM, TOP, 36
3	A20011279	1	ISLAND TRIM, BACK, 36