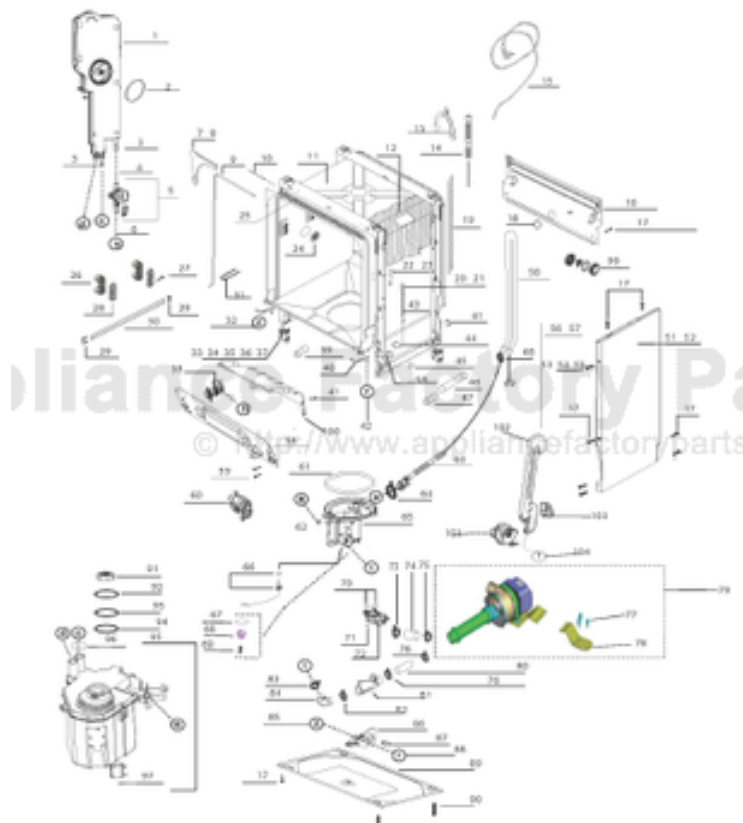


This Owner's Manual is provided and hosted by [Appliance Factory Parts](http://www.ApplianceFactoryParts.com).



VIKING FDW302WS Owner's Manual

[Shop genuine replacement parts for VIKING
FDW302WS](#)



[Find Your VIKING Dishwasher Parts - Select From 36 Models](#)

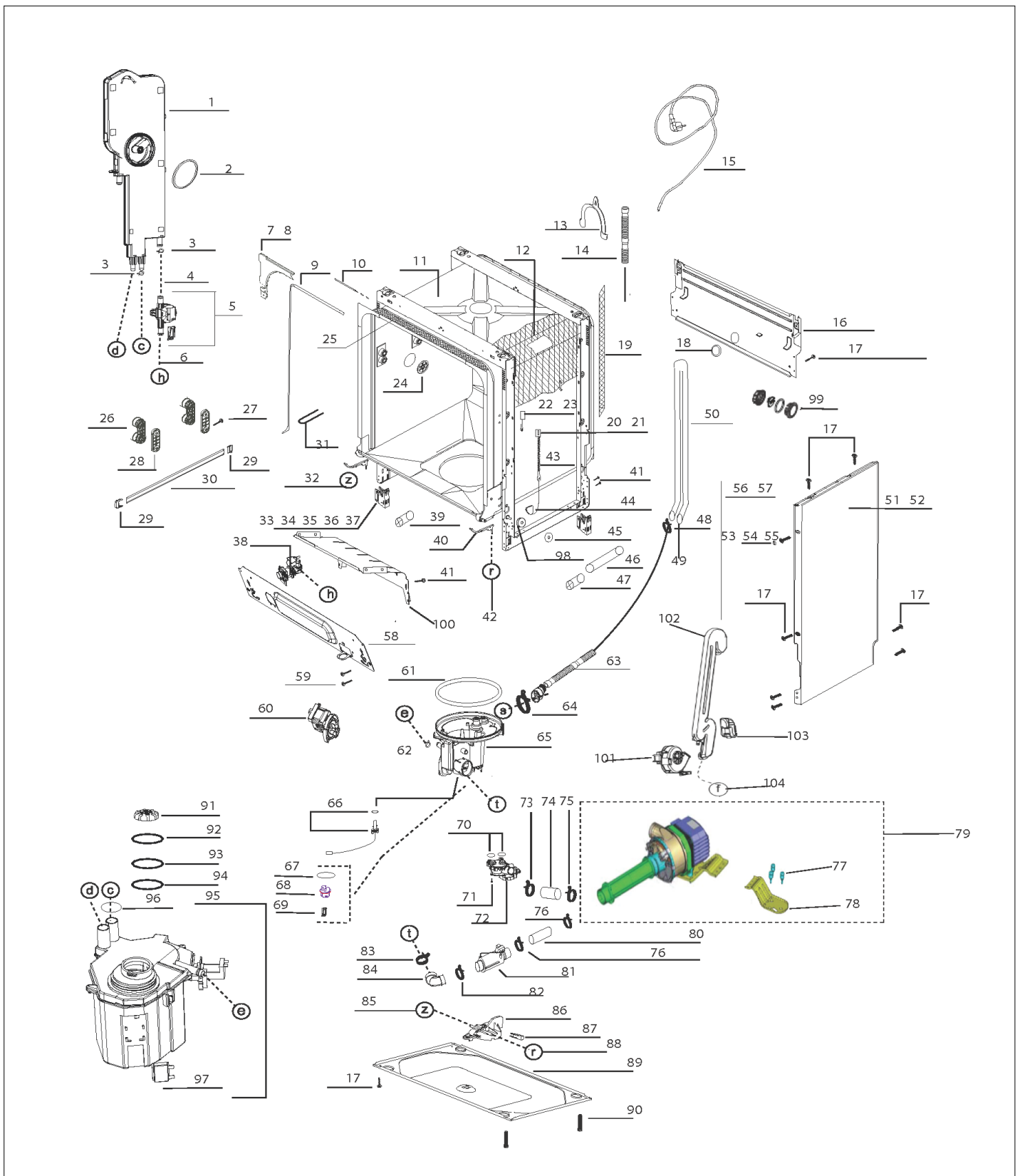
----- Manual continues below -----

FDW302WS

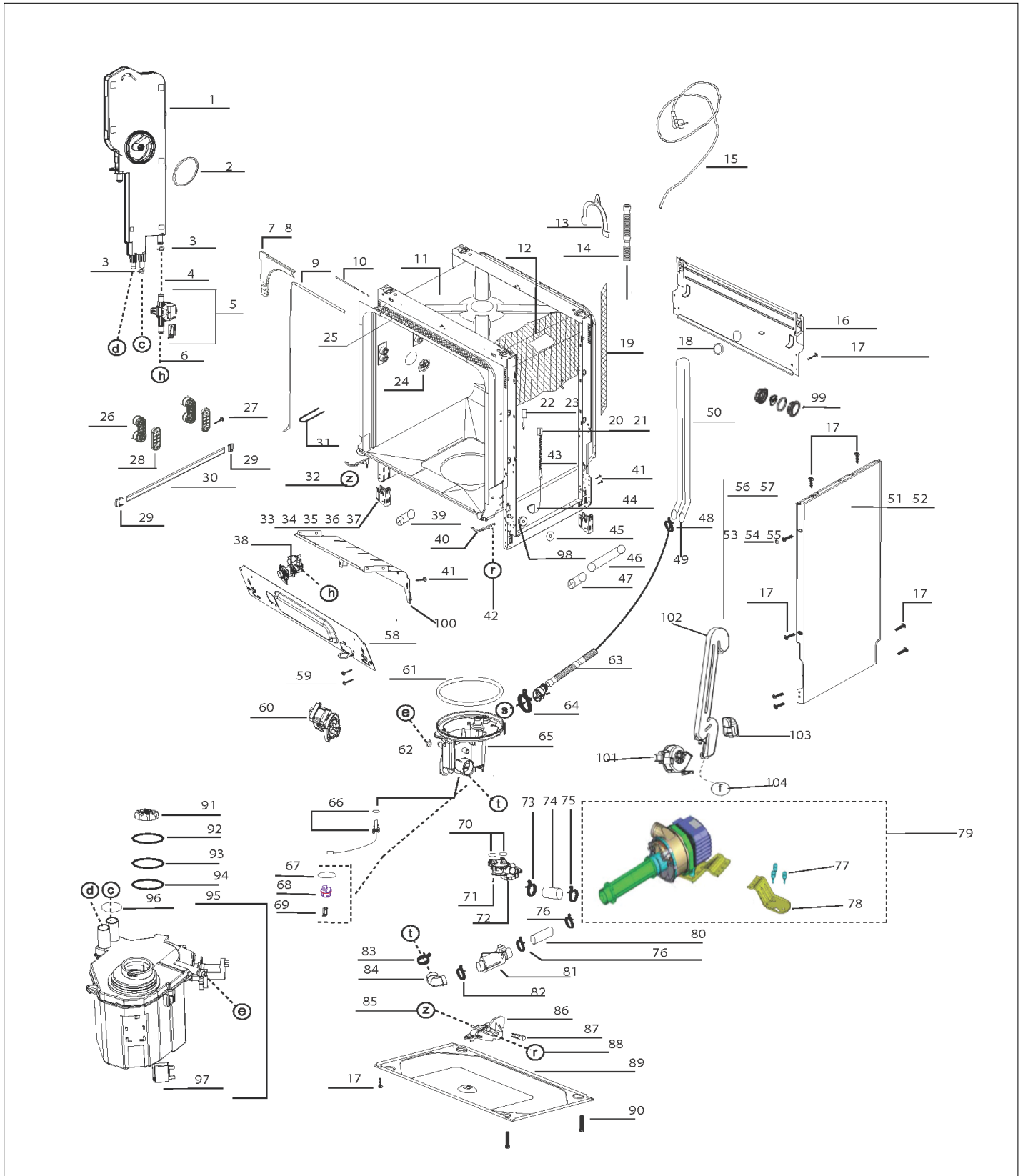
**BI DISHWASHER - CUSTOM PANEL WATER
SOFTENER**

FDW302WS Chassis Parts	1
FDW302WS Door Parts	2
FDW302WS Washer System Parts	3
Appendix A:Pages Index	A
Appendix B:Parts Index	B

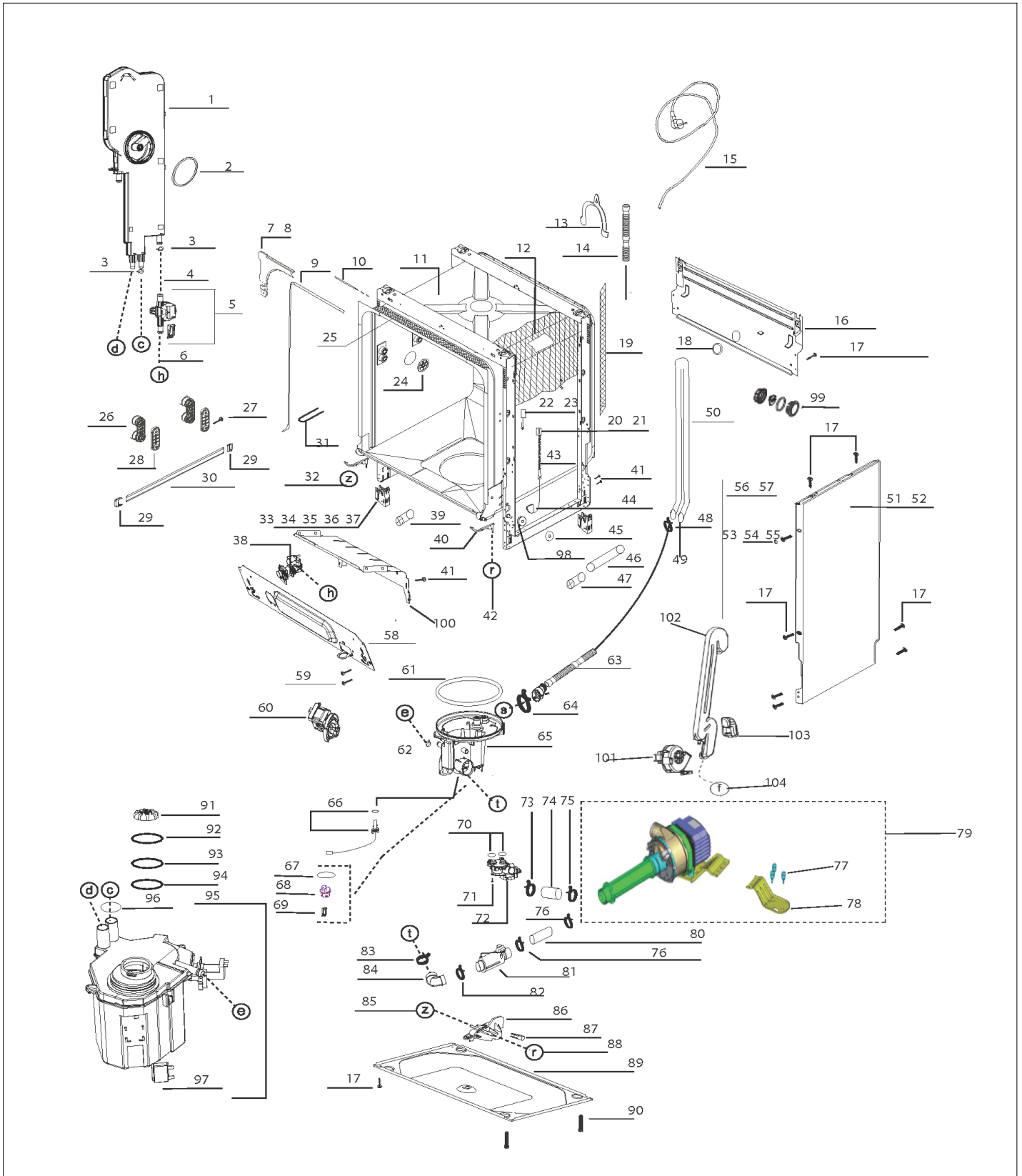
FDW302WS Chassis Parts



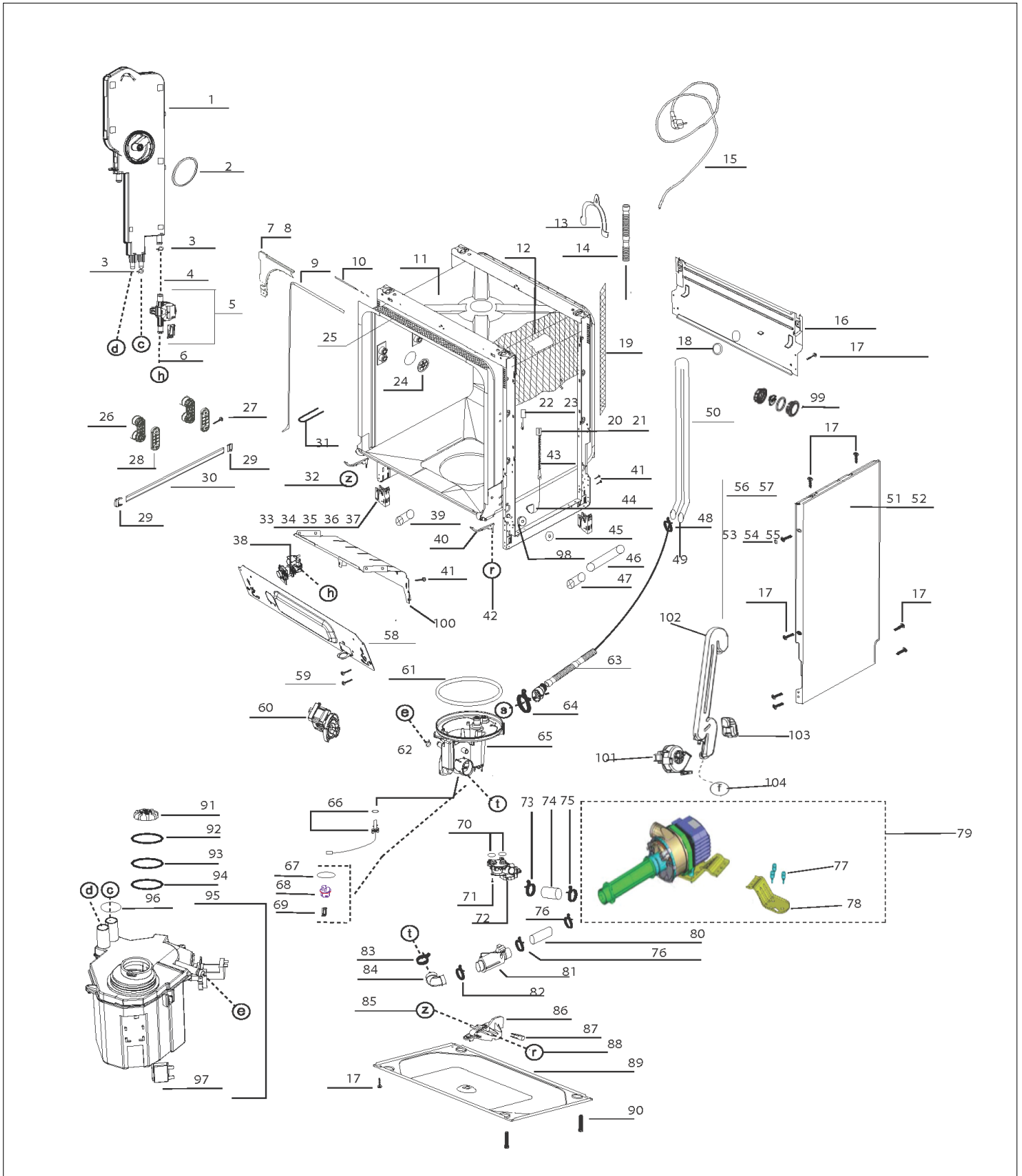
Item	Part No.	Name	Qty	Uom	NOTES
1	050775-000	REGENERATION UNIT	1	EA	
2	039910-000	AIR FUNNEL GASKET	1	EA	
Comments for Part Num. 039910-000 bradleysapplianceservice@shaw.ca on Feb 28, 2017 SUBS TO: 039910-000 AIR FUNNEL GASKET					
3	039958-000	HOSE CLAMP (Ø 15.88)	2	EA	
4	039866-000	HOSE BETWEEN COUNTER AND REGENERATION U.	1	EA	
Comments for Part Num. 039866-000 bradleysapplianceservice@shaw.ca on Mar 7, 2017 Caution when order this part. We ordered the 039866-000 HOSE but got the base pan instead. It was labelled with 039866-000 so it might be a mislabelled part.					
5	050887-000	COUNTER GROUP	1	EA	
6	039867-000	HOSE	1	EA	
7	039767-000	TOP CORNER BRACKET - LEFT	1	EA	
8	039768-000	TOP CORNER BRACKET - RIGHT	1	EA	
9	039769-000	DOOR SEALING GASKET	1	EA	
10	060202-000	NOISE ISOLATION FOR TUB	1	EA	
11	060168-000	STRUCTURE GROUP	1	EA	
12	050777-000	INNER TUB ISOLATION	1	EA	
13	039958-000	HOSE CLAMP (Ø 15.88)	1	EA	
14	039725-000	DRAIN HOSE	1	EA	
Comments for Part Num. 039725-000 profixappliances@gmail.com on Dec 12, 2017 Per Bradleysapplianceservice: IF LONG EXTERIOR DRAIN HOSE IS REQUIRED - FROM BACK OF DISHWASHER TO DRAIN OUTLET - ORDER PART NUMBER: 039726-000 DRAIN HOSE IF SUMP TO BACK OF UNIT DRAIN HOSE IS REQUIRED - INSIDE OF UNIT - ORDER PART NUMBER: 039725-000 SUMP DRAIN HOSE (16 INCHES LONG)					
15	039949-000	MAIN PLUG EURO 120 V CANADA	1	EA	
16	050891-000	REAR BOTTOM SUPPORT	1	EA	
17	060711-000	SCREW	11	EA	



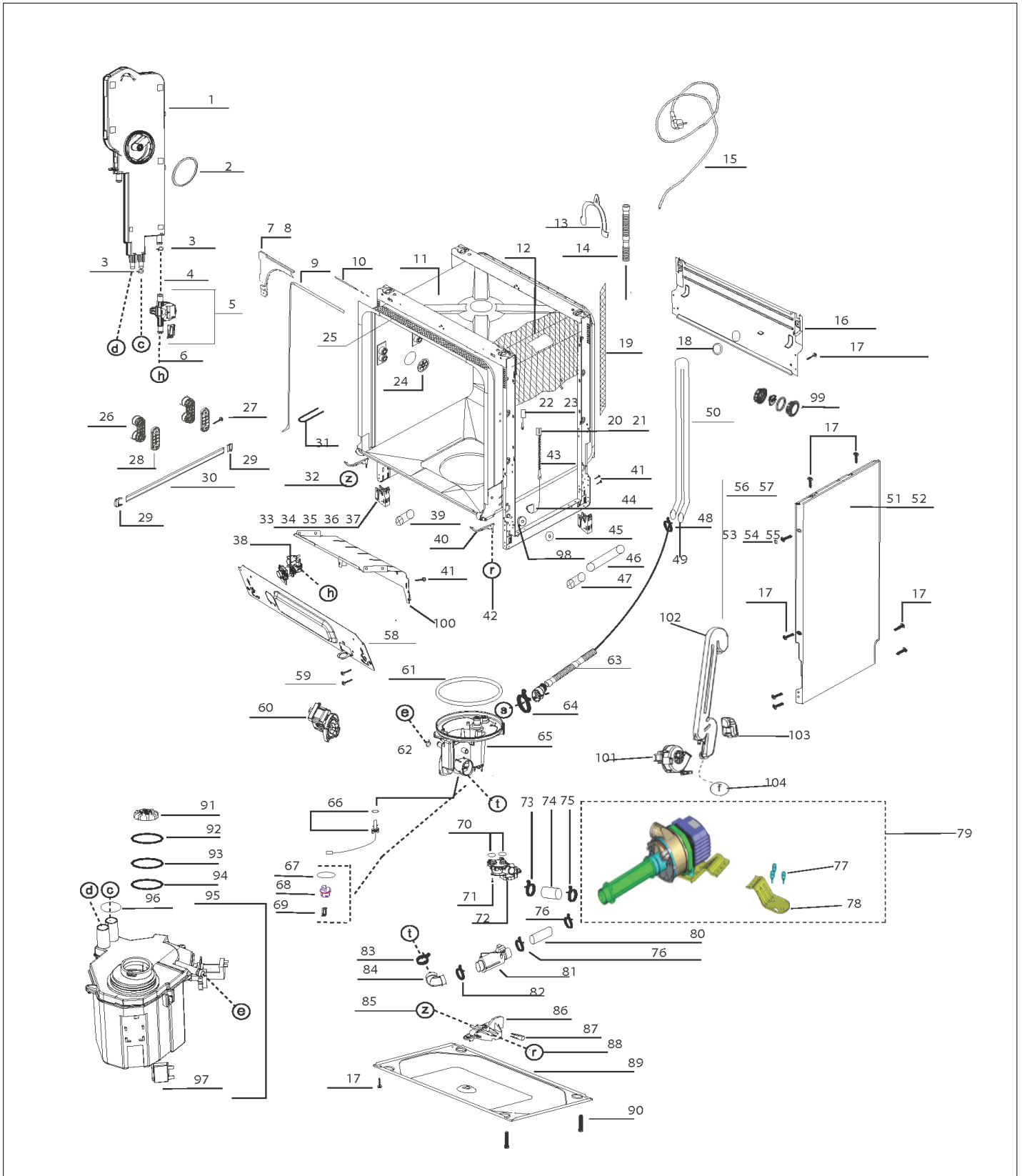
Item	Part No.	Name	Qty	Uom	NOTES
18	039918-000	DRAIN HOSE HOLDER 7037	2	EA	
19	060157-000	FELT	1	EA	
20	057470-000	DUAL SPRING HOLDER TOP PART	2	EA	
21	057471-000	DUAL SPRING HOLDER LOWER PART	2	EA	
22	039763-000	DOOR ADJUSTMENT GROUP-LEFT	1	EA	
23	059866-000	DOOR ADJUSTMENT GROUP	1	EA	
24	050778-000	air funnel cup	2	EA	
25	039923-000	DOOR LOCK COTTON FLEECE	1	EA	
26	050780-000	GRD BALL BEARING ROLLER GROUP	4	EA	
27	050781-000	SCREW	8	EA	
28	039777-000	RAIL WHEEL HOLDER	4	EA	
29	050782-000	rail cap front back	4	EA	
30	039887-000	RAIL	2	EA	
31	039901-000	DOOR LOCK HOOK	1	EA	
32	039873-000	HOSE	1	EA	
33	039898-000	FOOT SUPPORT PART	4	EA	
34	050779-000	FOOT GROUP-ADJUSTABLE-RIGHT-FRONT	1	EA	
35	039941-000	FOOT GROUP-ADJUSTABLE-RIGHT-BACK	1	EA	
36	039942-000	FOOT GROUP-ADJUSTABLE-LEFT-FRONT	1	EA	
37	039943-000	Rear feet Adjustable LEFT BACK	1	EA	
38	039756-000	WATER INLET VALVE	1	EA	
39	039765-000	DOOR ADJUSTING ADAPTOR	2	EA	
40	039921-000	OVERFLOW SIPHON	2	EA	
41	039912-000	INNER DOOR STOPPER	2	EA	
42	039872-000	HOSE	1	EA	
43	057495-000	HINGE SPRING	4	EA	
44	039894-000	HINGE ROPE GROUP	2	EA	
45	060200-000	SCREW CAP SIDE WALLS	2	EA	
46	039938-000	REAR ADJUSTABLE DOOR CONNECTION PART	2	EA	



Item	Part No.	Name	Qty	Uom	NOTES
47	039937-000	REAR ADJUSTABLE FOOT CONNECTION PART	2	EA	
48	039952-000	HOSE CLAMP (Ø 28_7)	2	EA	
49	039725-000	DRAIN HOSE	1	EA	
Comments for Part Num. 039725-000 profixappliances@gmail.com on Dec 12, 2017 Per Bradleysapplianceservice: IF LONG EXTERIOR DRAIN HOSE IS REQUIRED - FROM BACK OF DISHWASHER TO DRAIN OUTLET - ORDER PART NUMBER: 039726-000 DRAIN HOSE IF SUMP TO BACK OF UNIT DRAIN HOSE IS REQUIRED - INSIDE OF UNIT - ORDER PART NUMBER: 039725-000 SUMP DRAIN HOSE (16 INCHES LONG)					
50	039792-000	COLUMN ASSY	1	EA	
51	057516-000	SIDE PANEL-LEFT	1	EA	
52	057517-000	SIDE PANEL-RIGHT	1	EA	
53	039877-000	SCREW	2	EA	
54	039905-000	SCREW CAP SIDE WALLS	2	EA	
55	060203-000	SCREW CAP SIDE WALLS	2	EA	
56	057529-000	NOISE ISOLATION	2	EA	
Not Shown	NOTE	SLIDES ON TRIM OF TUB		EA	
57	039760-000	NOISE ISOLATION	2	EA	
Not Shown	NOTE	STICKS ON SIDE OF UNIT		EA	
58	039773-000	KICK PLATE SHEET	1	EA	
59	039761-000	SCREW	2	EA	
60	039758-000	DRAIN PUMP GROUP	1	EA	
61	039722-000	SUMP GASKET	1	EA	
62	060723-000	HOSE CLAMP (Ø 16.4)	5	EA	
63	039726-000	DRAIN HOSE	1	EA	

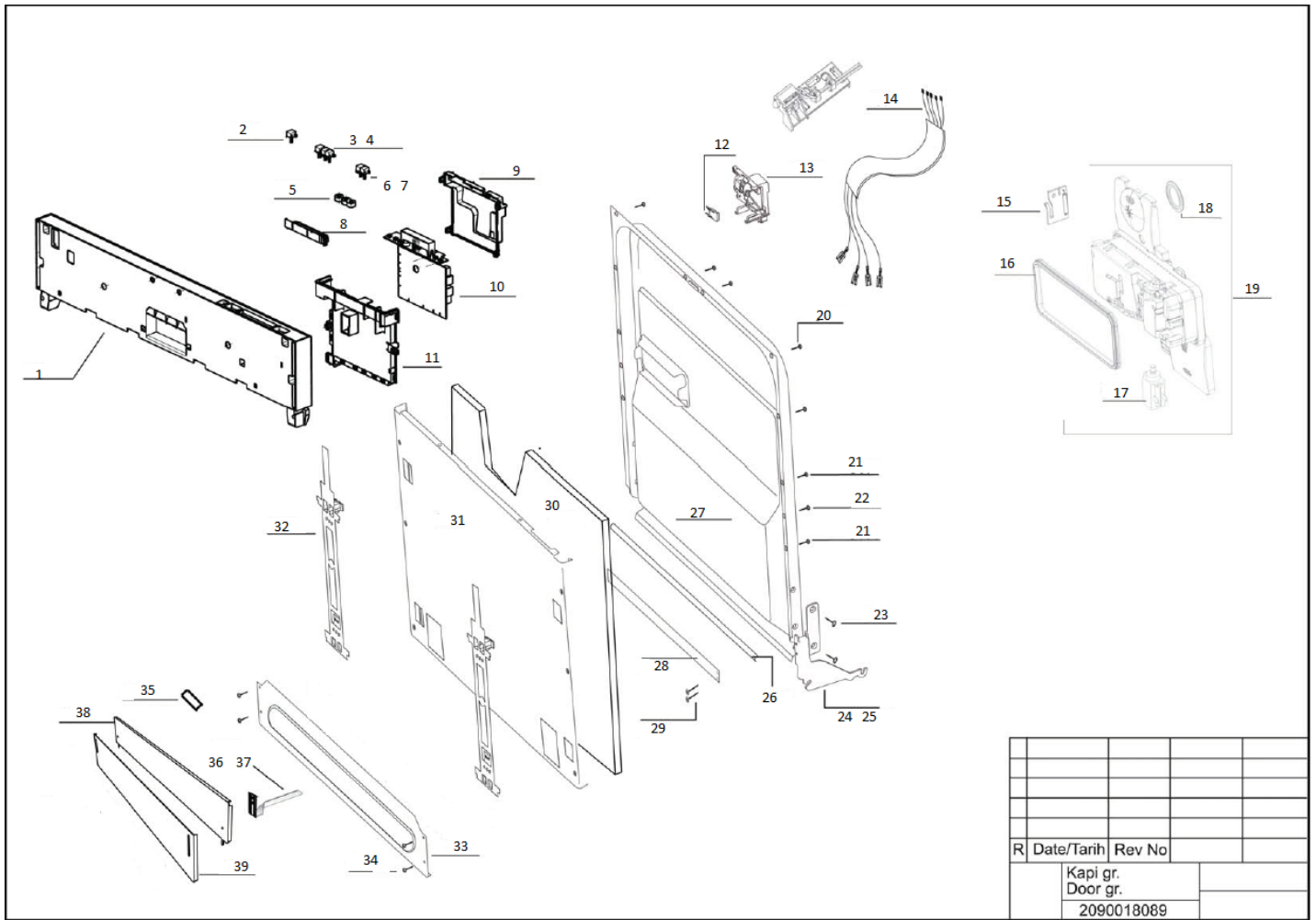


Item	Part No.	Name	Qty	Uom	NOTES
Comments for Part Num. 039726-000 bradleysapplianceservice@shaw.ca on Jul 15, 2016 IF LONG EXTERIOR DRAIN HOSE IS REQUIRED - FROM BACK OF DISHWASHER TO DRAIN OUTLET - ORDER PART NUMBER: 039726-000 DRAIN HOSE IF SUMP TO BACK OF UNIT DRAIN HOSE IS REQUIRED - INSIDE OF UNIT - ORDER PART NUMBER: 039725-000 SUMP DRAIN HOSE (16 INCHES LONG) Reply by profixappliances@gmail.com on Dec 12, 2017 Thank you for the clarification!					
64	039955-000	HOSE CLAMP	1	EA	
65	062826-000	SUMP-VDW300	1	EA	
66	039933-000	NTC GROUP	1	EA	
67	039868-000	O-RING (TURBIDITY)	1	EA	
68	039900-000	TURBIDITY FRAME	1	EA	
69	039950-000	TURBIDITY CARD AND LED HOLDER GR	1	EA	
70	039883-000	WASHER	2	EA	
71	039945-000	SCREW	1	EA	
72	060194-000	6 WAY VALVE GROUP	1	EA	
73	039953-000	HOSE CLAMP.(+ 34_1)	1	EA	
74	050798-000	HOSE	1	EA	
75	039957-000	HOSE CLAMP	1	EA	
76	039955-000	HOSE CLAMP	2	EA	
77	060182-000	CIRCULATION PUMP DAMPENING RUBBER	3	EA	
78	060181-000	MOTOR BRACKET GROUP	1	EA	
79	060187-000	QUADRO CIRCULATION MOTOR GROUP	1	EA	
80	060188-000	PUMP INLET HOSE	1	EA	
81	060167-000	FLOW THROUGH HEATER	1	EA	
82	039955-000	HOSE CLAMP	1	EA	
83	050799-000	HOSE CLAMP	1	EA	
84	039723-000	HOSE BETWEEN SUMP AND HEATER	1	EA	
85	039873-000	HOSE	1	EA	
86	039934-000	OVERFLOW FLOAT GROUP	1	EA	



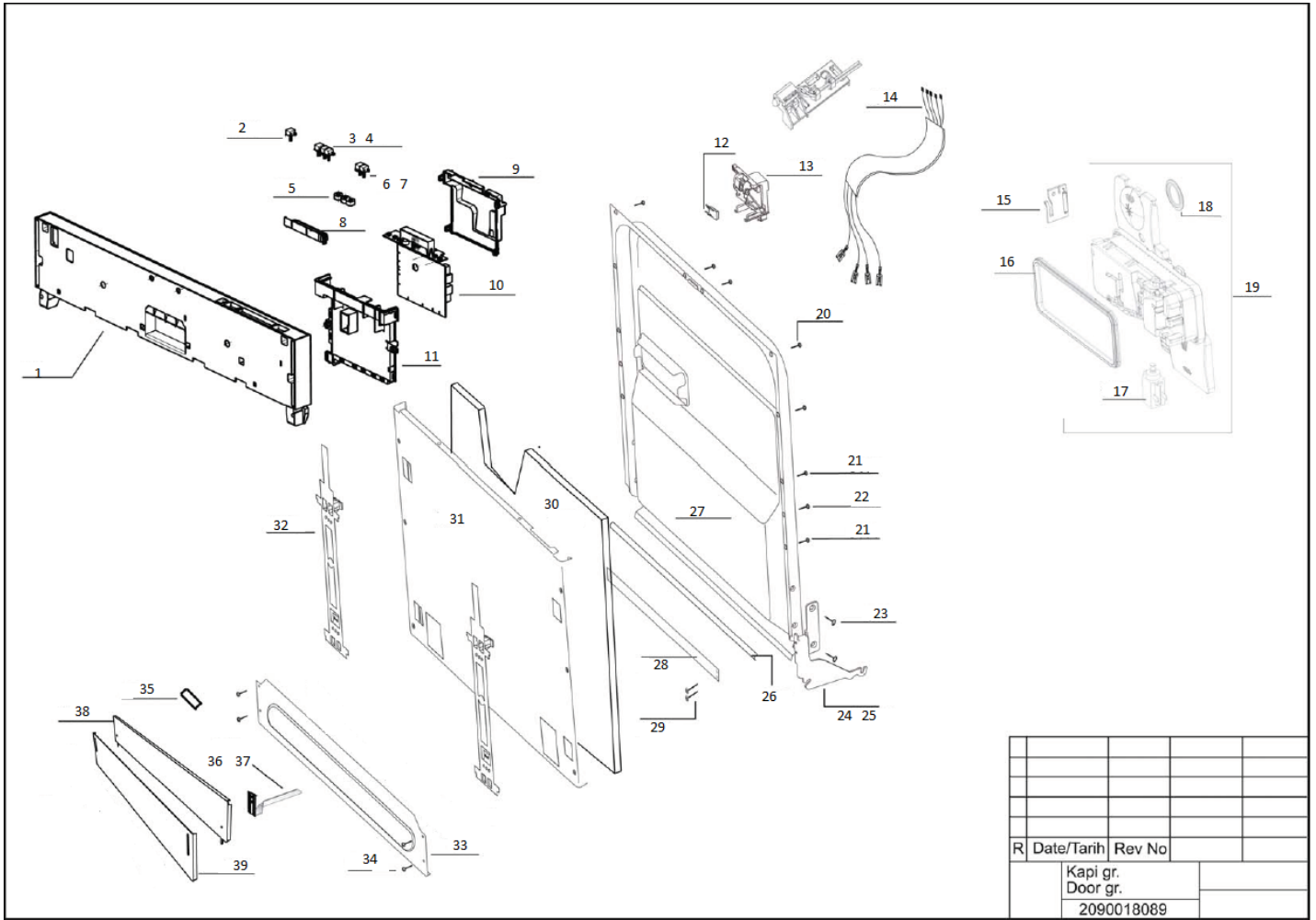
Item	Part No.	Name	Qty	Uom	NOTES
87	039913-000	MICRO SWITCH	1	EA	
88	039872-000	HOSE	1	EA	
89	039886-000	BOTTOM TRAY	1	EA	
90	039889-000	FOOT GROUP-ADJUSTABLE	4	EA	
91	050805-000	WATER SOFTENER CAP GROUP 2	1	EA	
92	050806-000	WATER SOFTENER CAP GASKET	1	EA	
93	057592-000	WATER SOFTENER NUT	1	EA	
94	050807-000	SOFTENER O-RING	1	EA	
95	057585-000	WATER SOFTENER GROUP	1	EA	
96	039753-000	O RING -WATER SOFTENER	2	EA	
97	039865-000	SALT INDICATOR SWITCH	1	EA	Not available online / Call for pricing and availability
98	039893-000	HINGE WHEEL	2	EA	
99	060174-000	INNER ILLUMINATION CARD HOLDER GR	1	EA	
100	039885-000	LOWER SUPPORT - FRONT	1	EA	
101	050179-000	FAN MOTOR GROUP	1	EA	Not available online / Call for pricing and availability
102	050784-000	FAN SUCTION PIPE	1	EA	
103	050796-000	FAN OUTLET PIPE	1	EA	
104	050797-000	HOSE BETWEEN FAN AND SUMP	1	EA	
NI	057530-000	ACCESSORIES	1	EA	
Not Shown	NOTE	INSTALL HARDWARE		EA	
NI	064528-000	LEFT MOUNTING BRACKET	1	EA	
Not Shown	NOTE	TO SECURE UNIT TO CABINET		EA	
NI	064529-000	RIGHT MOUNTING BRACKET	1	EA	
Not Shown	NOTE	TO SECURE UNIT TO CABINET		EA	
NI	061473-000	AMERICA BOBBIN TERFERENCE FILTER	1	EA	

FDW302WS Door Parts



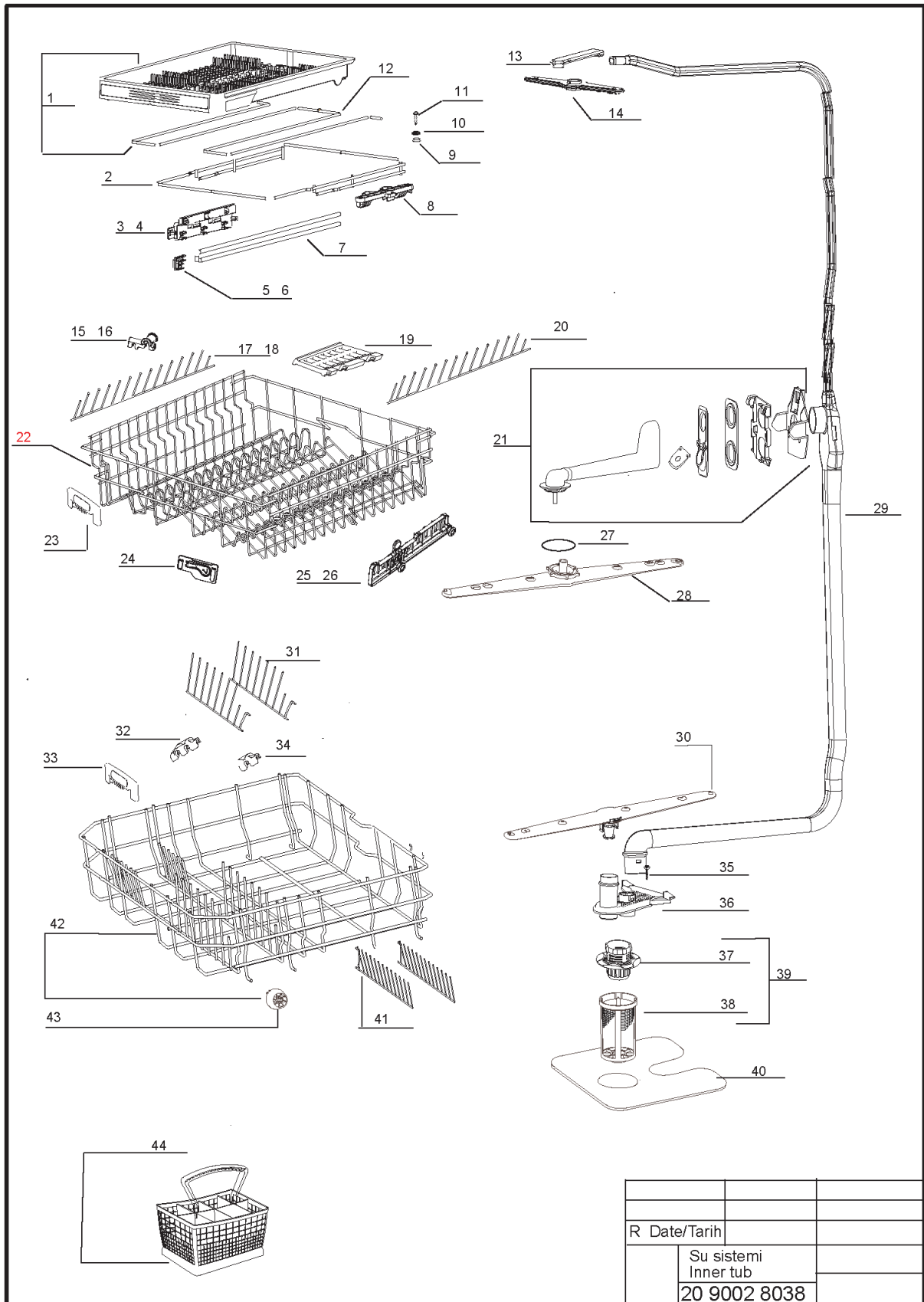
R	Date/Tarih	Rev No	
	Kapi gr.		
	Door gr.		
	2090018089		

Item	Part No.	Name	Qty	Uom	NOTES
1	060163-000	PANEL GR FDW302	1	EA	
2	060156-000	ON-OFF BUTTON BLACK	1	EA	
3	060153-000	F1-F2 FUNCTION BUTTON BLACK	1	EA	
4	060155-000	PROGRAME DELAY BUTTON BLACK	1	EA	
5	060192-000	E5-E6 BUTTON GASKET	1	EA	
6	060154-000	F3-F4 FUNCTION BUTTON BLACK	1	EA	
7	060180-000	DELAY BUTTON BLACK	1	EA	
8	060191-000	E5-E6 BOTTON HOLDER PART	1	EA	
9	060190-000	E5-E6 CARD HOLDER BACK PART	1	EA	
10	060161-000	ELECTRONIC CARD E5	1	EA	
11	060189-000	E5-E6 CARD HOLDER FRONT PART	1	EA	
12	059878-000	NEW DOOR SWITCH	1	EA	
13	060170-000	DOOR LOCK GROUP	1	EA	
14	060185-000	D1 CABLE HARNESS	1	EA	
15	050831-000	RINSE AID GLASS	1	EA	
16	039714-000	DTERGENT DISPENSER GASKET	1	EA	
17	039882-000	THERMOACTUATOR D3731 D3421	1	EA	
18	039713-000	RINSE AID GASKET	1	EA	
19	039715-000	DETERGENT DISPENSER GROUP	1	EA	
20	039880-000	SCREW	6	EA	
21	039917-000	BOLT M4X8 D3731 D3421	4	EA	
22	063627-000	INNER DOOR STOPER	2	EA	
23	060158-000	SCREW	4	EA	
24	039739-000	HINGE ARM RIGHT	1	EA	
25	039738-000	HINGE ARM LEFT	1	EA	
26	039908-000	DOOR SEALING GASKET	1	EA	
27	039720-000	INNER DOOR GR	1	EA	
28	039935-000	HINGE ARM SUPPORT	1	EA	
29	039912-000	INNER DOOR STOPER	4	EA	



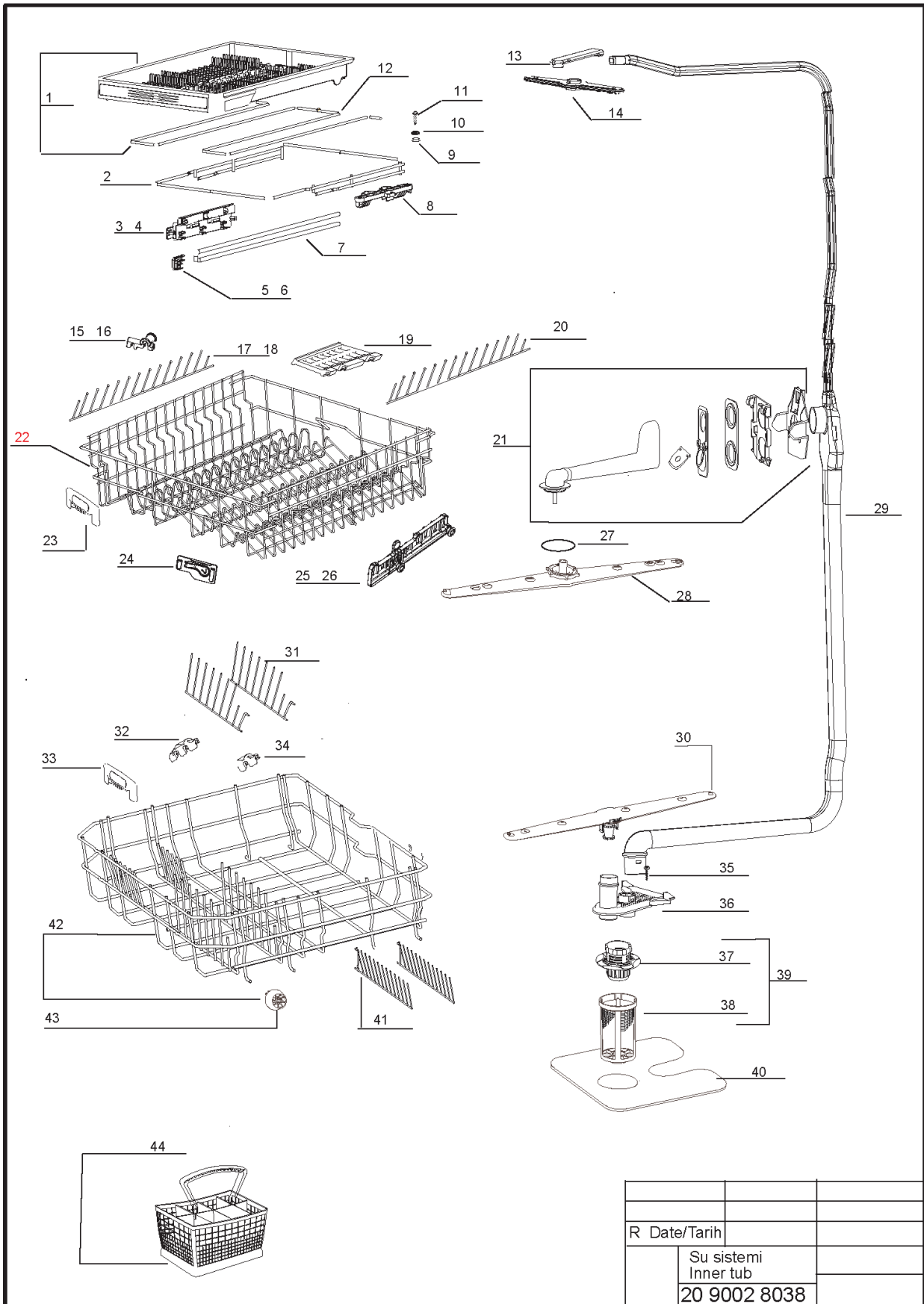
Item	Part No.	Name	Qty	Uom	NOTES
30	039903-000	DOOR INSULATION	1	EA	
31	059867-000	OUTER DOOR	1	EA	Not available online / Call for pricing and availability
32	060709-000	BOARD CONNECTION PART	2	EA	Not available online / Call for pricing and availability
33	039773-000	KICK PLATE SHEET	1	EA	
34	039876-000	SCREW	4	EA	
35	039928-000	KICK PLATE ADJUSTING LOCKET	1	EA	
36	039924-000	PLINTH ADJUSTMENT SHEET LEFT	1	EA	
37	039925-000	PLINTH ADJUSTMENT SHEET RIGHT	1	EA	
38	039926-000	KICK PLATE SHEET	1	EA	
39	060210-000	KICK PLATE SHEET	1	EA	
NI	063681-000	INSULATION MATERIAL	1	EA	
Not Shown	NOTE	GOES BEHIND KICKPLATE		EA	
NI	057473-000	PROGRAM END SIGNAL MODULE	1	EA	
Not Shown	NOTE	(INDICATOR LIGHT)		EA	

FDW302WS Washer System Parts



R	Date/Tarih	
	Su sistemi Inner tub	
	20 9002 8038	

Item	Part No.	Name	Qty	Uom	NOTES
1	060176-000	UPPER TRAY GROUP	1	EA	
2	050810-000	UPPER TRAY HOLDER	1	EA	
3	050811-000	UPPER TRAY DRAWER HOLDER-LEFT	1	EA	
4	050812-000	UPPER TRAY DRAWER HOLDER-RIGHT	1	EA	
5	060177-000	UPPER TRAY RAIL CAP-RIGHT RAL 7037	1	EA	
6	060178-000	UPPER TRAY RAIL CAP-LEFT RAL7037	1	EA	
7	050815-000	CEILING RAIL	2	EA	
8	050816-000	UPPER TRAY RAIL HOLDER	2	EA	
9	050817-000	CONNECTING WASHER	1	EA	
10	039883-000	WASHER	1	EA	
11	039945-000	SCREW	1	EA	
12	050809-000	UPPER TRAY FRAME WIRE	1	EA	
13	039847-000	CEILING SPRAY ARM FEED PIPE	1	EA	
14	039841-000	CEILING SPRAY GROUP	1	EA	
15	039861-000	UPPER BASKET CLIPS	11	EA	
16	039783-000	FOLDING PART CLIPS RIGHT	1	EA	
17	059870-000	UPPER BASKET SUPPORT WIRE	1	EA	
18	059871-000	UPPER BASKET SUPPORT WIRE	1	EA	
19	039785-000	SHELF GROUP	4	EA	
20	060173-000	LOWER BASKET PLATE HOLDER FRONT	2	EA	
21	039862-000	UPPER SPRAY ARM FEED PIPE	1	EA	
22	060241-000	UPPER RACK GR. RAL 7037	1	EA	
23	060179-000	UPPER BASKET HANDLE GR	1	EA	
24	057494-000	GRD FOLDING PART	1	EA	
25	057480-000	UPPER BASKET MECHANISM- LEFT	1	EA	
26	057481-000	UPPER BASKET MECHANISM- RIGHT	1	EA	
27	039870-000	GASKET	1	EA	



R	Date/Tarih	
	Su sistemi Inner tub	
	20 9002 8038	

Item	Part No.	Name	Qty	Uom	NOTES
28	060165-000	UPPER SPRAY ARM GROUP	1	EA	
29	039840-000	WATER SUPPLY TUBE GROUP	1	EA	
30	060164-000	LOWER SPRAY ARM GROUP	1	EA	
31	039788-000	PLATE HOLDER-LEFT	2	EA	
32	050821-000	LOWER BASKET CLIPS	3	EA	
33	050883-000	LOWER BASKET HANDLE	1	EA	
34	039855-000	LOWER BASKET CLIPS	7	EA	
35	039951-000	HOSE CLAMP (DIA 17.3)	1	EA	
36	060199-000	HALF FILTER SUPPORT ZONE	1	EA	
37	057474-000	COARSE FILTER	1	EA	
38	060196-000	MICRO FILTER GROUP_2	1	EA	
39	060197-000	FILTER GROUP_2	1	EA	
40	060198-000	METAL FILTER GROUP	1	EA	
41	039789-000	PLATE HOLDER-RIGHT	2	EA	
42	060184-000	LOWER BASKET GROUP	1	EA	
43	050884-000	GRD LOWER BASKET SANTOPRENE WHEEL GROUP	1	EA	
44	057482-000	CUTLERY BASKET GROUP	1	EA	



Appendix A:Pages Index

FDW302WS Chassis Parts 1
FDW302WS Door Parts 2
FDW302WS Washer System Parts 3



Appendix B:Parts Index

039713-000	2	039876-000	2
039714-000	2	039877-000	1
039715-000	2	039880-000	2
039720-000	2	039882-000	2
039722-000	1	039883-000	1, 3
039723-000	1	039885-000	1
039725-000	1, 1	039886-000	1
039726-000	1	039887-000	1
039738-000	2	039889-000	1
039739-000	2	039893-000	1
039753-000	1	039894-000	1
039756-000	1	039898-000	1
039758-000	1	039900-000	1
039760-000	1	039901-000	1
039761-000	1	039903-000	2
039763-000	1	039905-000	1
039765-000	1	039908-000	2
039767-000	1	039910-000	1
039768-000	1	039912-000	1, 2
039769-000	1	039913-000	1
039773-000	1, 2	039917-000	2
039777-000	1	039918-000	1
039783-000	3	039921-000	1
039785-000	3	039923-000	1
039788-000	3	039924-000	2
039789-000	3	039925-000	2
039792-000	1	039926-000	2
039840-000	3	039928-000	2
039841-000	3	039933-000	1
039847-000	3	039934-000	1
039855-000	3	039935-000	2
039861-000	3	039937-000	1
039862-000	3	039938-000	1
039865-000	1	039941-000	1
039866-000	1	039942-000	1
039867-000	1	039943-000	1
039868-000	1	039945-000	1, 3
039870-000	3	039949-000	1
039872-000	1, 1	039950-000	1
039873-000	1, 1	039951-000	3
		039952-000	1



039953-000	1	057495-000	1
039955-000	1, 1, 1	057516-000	1
039957-000	1	057517-000	1
039958-000	1, 1	057529-000	1
050179-000	1	057530-000	1
050775-000	1	057585-000	1
050777-000	1	057592-000	1
050778-000	1	059866-000	1
050779-000	1	059867-000	2
050780-000	1	059870-000	3
050781-000	1	059871-000	3
050782-000	1	059878-000	2
050784-000	1	060153-000	2
050796-000	1	060154-000	2
050797-000	1	060155-000	2
050798-000	1	060156-000	2
050799-000	1	060157-000	1
050805-000	1	060158-000	2
050806-000	1	060161-000	2
050807-000	1	060163-000	2
050809-000	3	060164-000	3
050810-000	3	060165-000	3
050811-000	3	060167-000	1
050812-000	3	060168-000	1
050815-000	3	060170-000	2
050816-000	3	060173-000	3
050817-000	3	060174-000	1
050821-000	3	060176-000	3
050831-000	2	060177-000	3
050883-000	3	060178-000	3
050884-000	3	060179-000	3
050887-000	1	060180-000	2
050891-000	1	060181-000	1
057470-000	1	060182-000	1
057471-000	1	060184-000	3
057473-000	2	060185-000	2
057474-000	3	060187-000	1
057480-000	3	060188-000	1
057481-000	3	060189-000	2
057482-000	3	060190-000	2
057494-000	3	060191-000	2



060192-000 2
060194-000 1
060196-000 3
060197-000 3
060198-000 3
060199-000 3
060200-000 1
060202-000 1
060203-000 1
060210-000 2
060241-000 3
060709-000 2
060711-000 1
060723-000 1
061473-000 1
062826-000 1
063627-000 2
063681-000 2
064528-000 1
064529-000 1