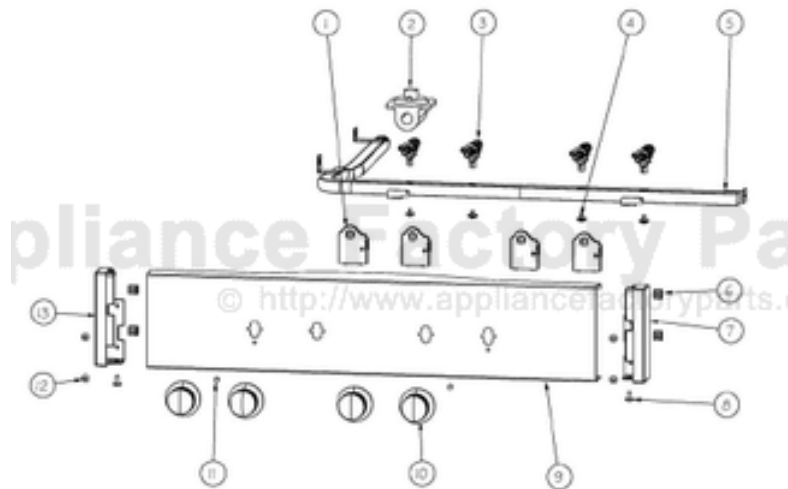


This Owner's Manual is provided and hosted by [Appliance Factory Parts](http://www.appliancefactoryparts.com).



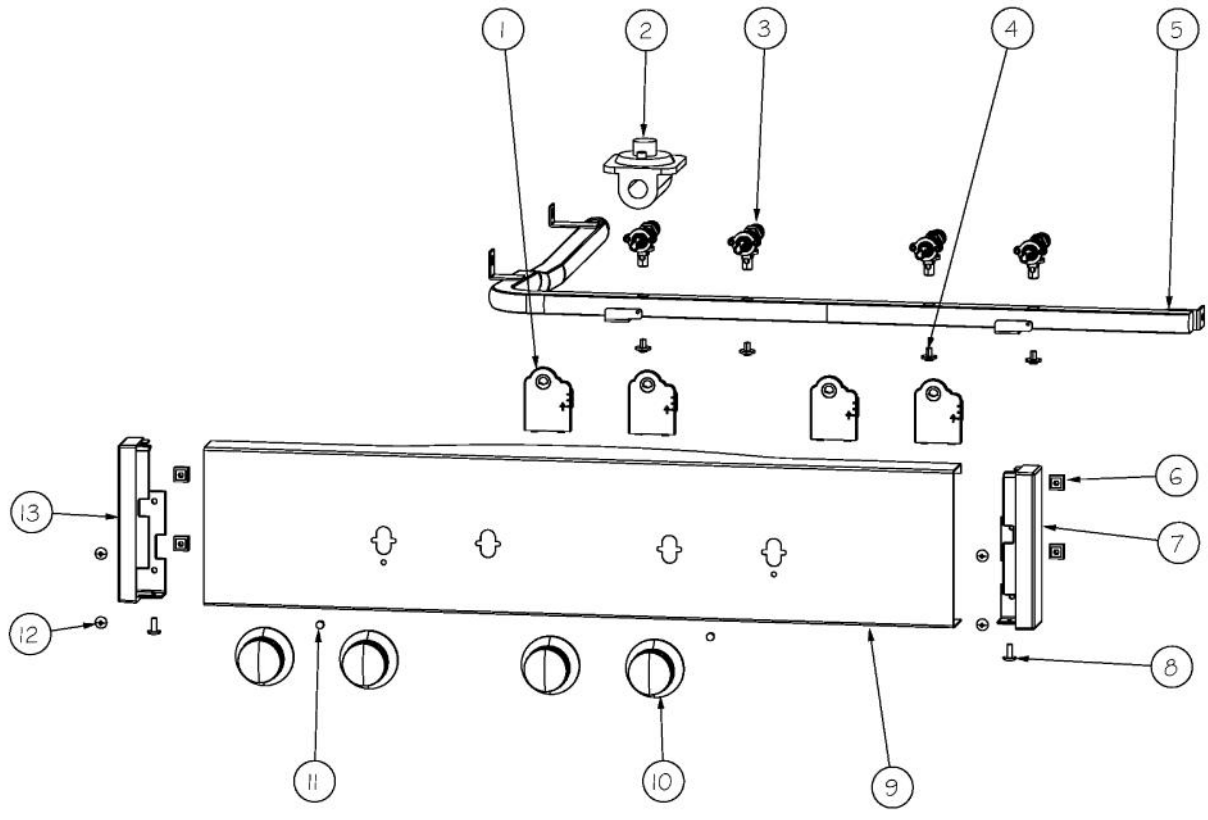
# VIKING DGRT301-4B Owner's Manual

**[Shop genuine replacement parts for VIKING  
DGRT301-4B](#)**

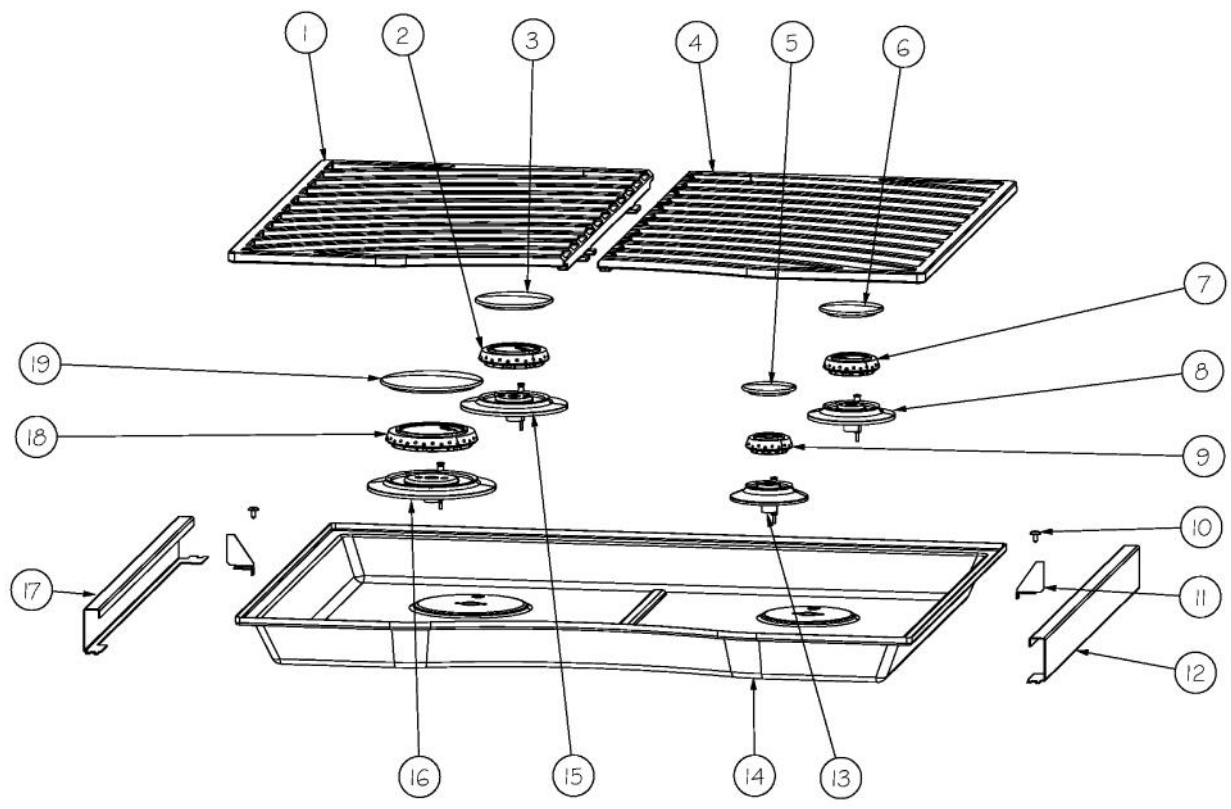


**[Find Your VIKING Range Hoods Parts - Select From 411 Models](#)**

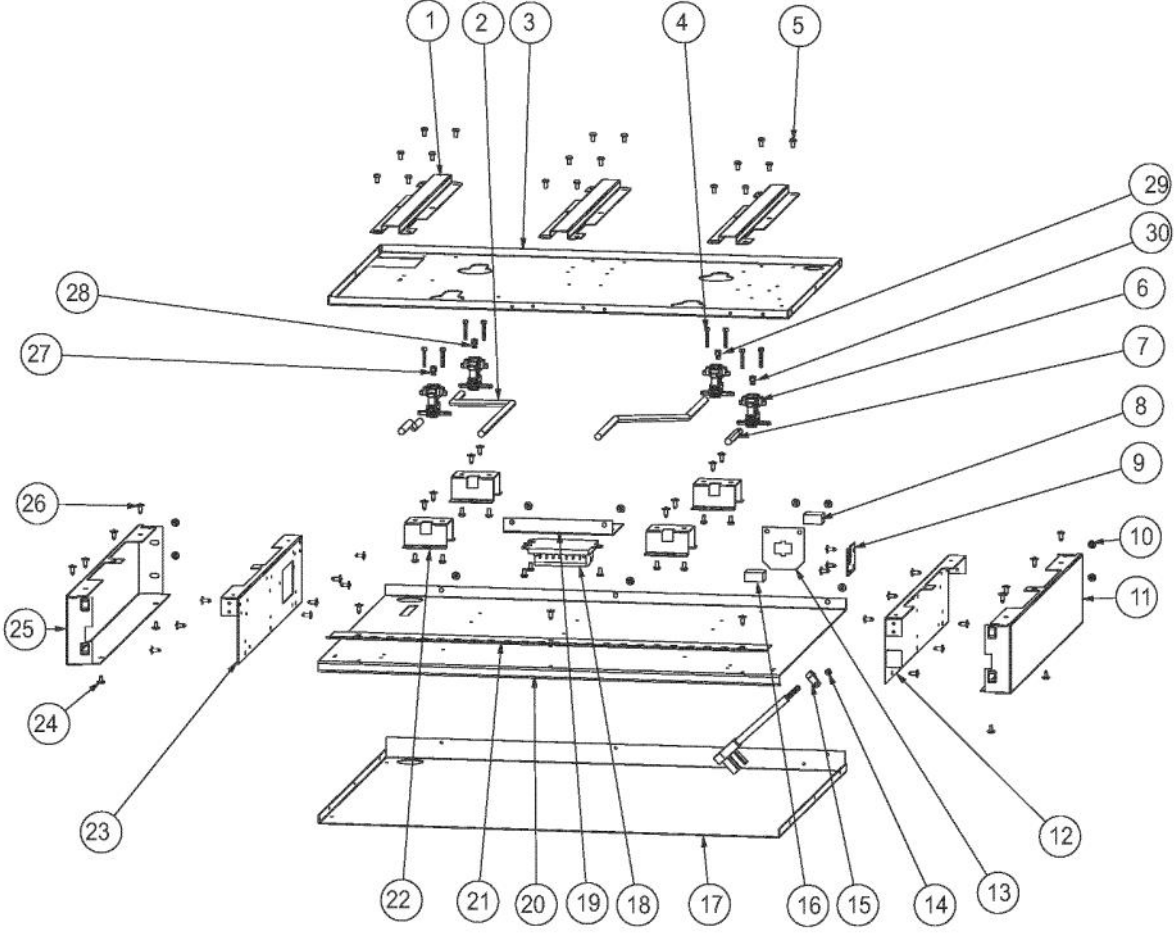
----- Manual continues below -----



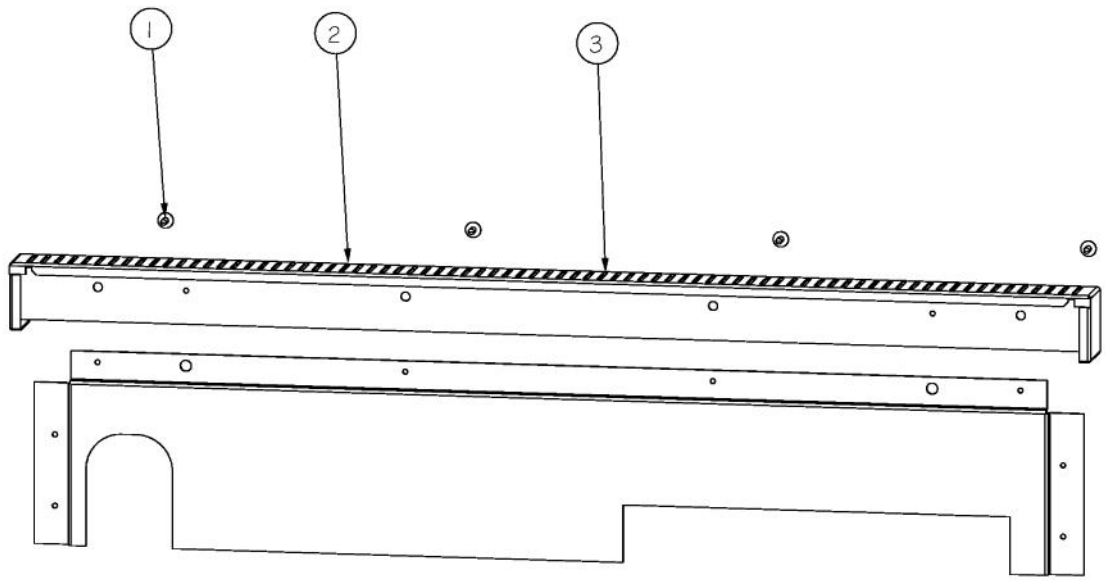
Ref #	Part Number	Qty.	Description
1	PA020058	4	IRIS SINGLE SPARK MODULE
2	023883-000	1	REGULATOR, PRSS, NAT, 5, DESIGNER
2	023884-000		REGULATOR, PRSS, L.P., 10 DESIGNER
3	PA010157	4	SUB TO 003515-000 - RANGE TOP BURNER VALVE
4	PD010012	4	VALVE BOLT 1/4-20 UNC-2B 5/16 M.S.
5	PA050106	1	DGRT300 MANIFOLD
6	PD030005	4	SELF RETAINING NUT
7	PE030141	1	CONTROL PANEL END CAP, RH DGRT
8	PD020033	2	SRW-NO.10-24X1/2T(23)PH.WFR HD (NKL)
9	016764-000	1	CONTROL PANEL, DGRT301-4B W/GRAPHICS
10	PA010163	4	DGRT KNOB-CHROME W/BLACK SLEEVE
11	PD020067	2	NO.6 X 3/8 PAN PHIL. TEK SS
12	PD010003	2	10-24 X 1/2 PH.TR.HD.SERD.M.S.
13	PE030140	1	CONTROL PANEL END CAP, LH DGRT



Ref #	Part Number	Qty.	Description
1	PA060109	1	LH GRATE - BK
2	PA080101	1	DGRT-C COMPLETE BURNER HEAD ASSEMBLY
3	PA080107	1	DGRT-C BURNER CAP- BLACK
4	PA060110	1	RH GRATE - BK
5	PA080103	1	DGRT-A BURNER CAP- BLACK
6	PA080105	1	DGRT-B BURNER CAP- BLACK
7	PA080100	1	DGRT-B COMPLETE BURNER HEAD ASSEMBLY
8	PB050071	1	B-BASE
9	PA080099	1	DGRT-ACOMPLETE BURNER HEAD ASSEMBLY
10	PD020032	2	SRW-8(A)X3/8PH.WFR HD 7/16DIAXNICL
11	A20014958	2	DESIGNER SIDE TRIM SUPPORT
12	B20011270	1	SIDE TRIM, RH
13	PB050072	1	A-BASE
14	B21011410	1	BURNER PAN - SS, DGRT300
NI	E91011410BK	1	BURNER PAN, DGRT300 XBKX
NI	E91011410WH	1	BURNER PAN, DGRT300 XWHX
15	PB050070	1	C-BASE
16	PB050069	1	D-BASE
17	B20011269	1	SIDE TRIM, LH
18	PA080102	1	DGRT-D COMPLETE BURNER HEAD ASSEMBLY
19	PA080083	1	D BURNER CAP XMATTE BLACKX



Ref #	Part Number	Qty.	Description
1	A20011280	3	BURNER PAN SPACER
2	PB020191	2	15 FLEX TUBE
3	A20011409	1	BURNER PAN SUPPORT DGRT30
4	PD020159	8	DGSU BURNER BASE SCREW
5	PD020004	29	10X3/8PH.HD.TYPE 25 REPL PD040125
6	PB050067	4	JETHOLDER
7	PB020190	2	10 FLEX TUBE
8	PE070071	1	DISCONNECT BLOCK XALX 770027-1
9	A1001138	1	MANIFOLD BRKT
10	003860-000	3	NO.10-18 X .500 FASTNR,SCR,HXWH,STL,ZPLT
11	B20011272	1	SIDE PANEL, RH
12	A20011268	1	BURNER BOX SIDE, RH
13	A10011273	1	PLUG BRACKET
14	PD020010	1	10 X 3/8 GREEN GROUNDING SCREW
15	PD030009	1	CLAMP, AL-8 (.500)
16	PE070070	1	DISCONNECT BLOCK XALX 770020-1
17	A20014518	1	BURNER BOX BOTTOM
18	PA020047	1	INVENSYS 0+4 RE-IGNITION SPARK MODULE
19	A20011287	1	SPARK MODULE BRACKET
20	A20014519	1	INSULATION PANEL
21	A20013835	1	FINGER SHIELD 30
22	A20013838	4	JET HOLDER SPACER
23	A20011267	1	BURNER BOX SIDE, LH
24	PD020032	4	SRW-8(A)X3/8PH.WFR HD 7/16DIAXNICL
25	B20011271	1	SIDE PANEL, LH
26	PD020002	43	10 X 1/2 PH.TR.HD.SMS.
27	PB040254	4	NO.49 NAT
27	PB040274	1	NO.58 LP
28	PB040255	1	NO.52 NAT
28	PB040271	1	NO.60 LP
29	PB040236	1	NO.55 NAT
29	PB040204	1	NO.67 LP



Ref #	Part Number	Qty.	Description
1	PD020032	4	SRW-8(A)X3/8PH.WFR HD 7/16DIAXNICL
2	016597-000	1	ISLAND TRIM, DESIGNER RANGE
3	015909-000	1	ISLAND TRIM, BACK, DESIGNER