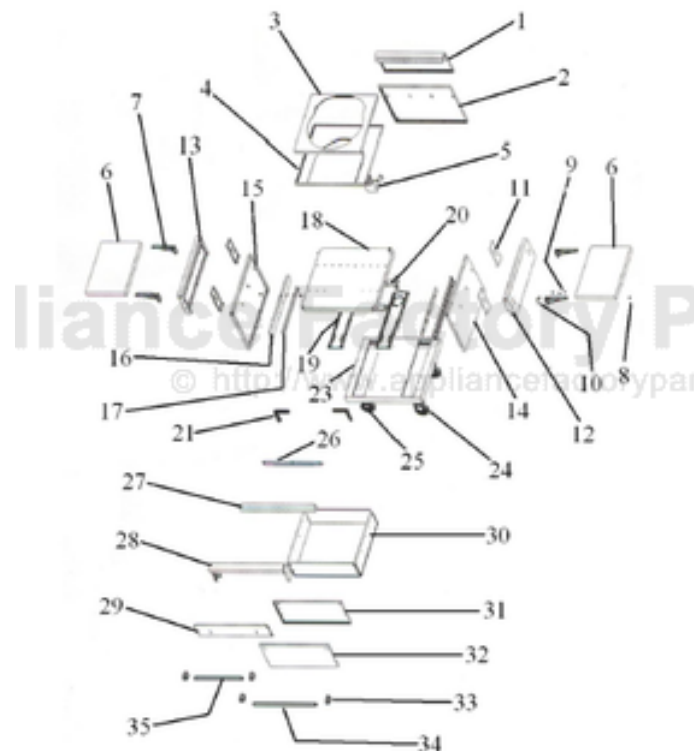


This Owner's Manual is provided and hosted by [Appliance Factory Parts](#).



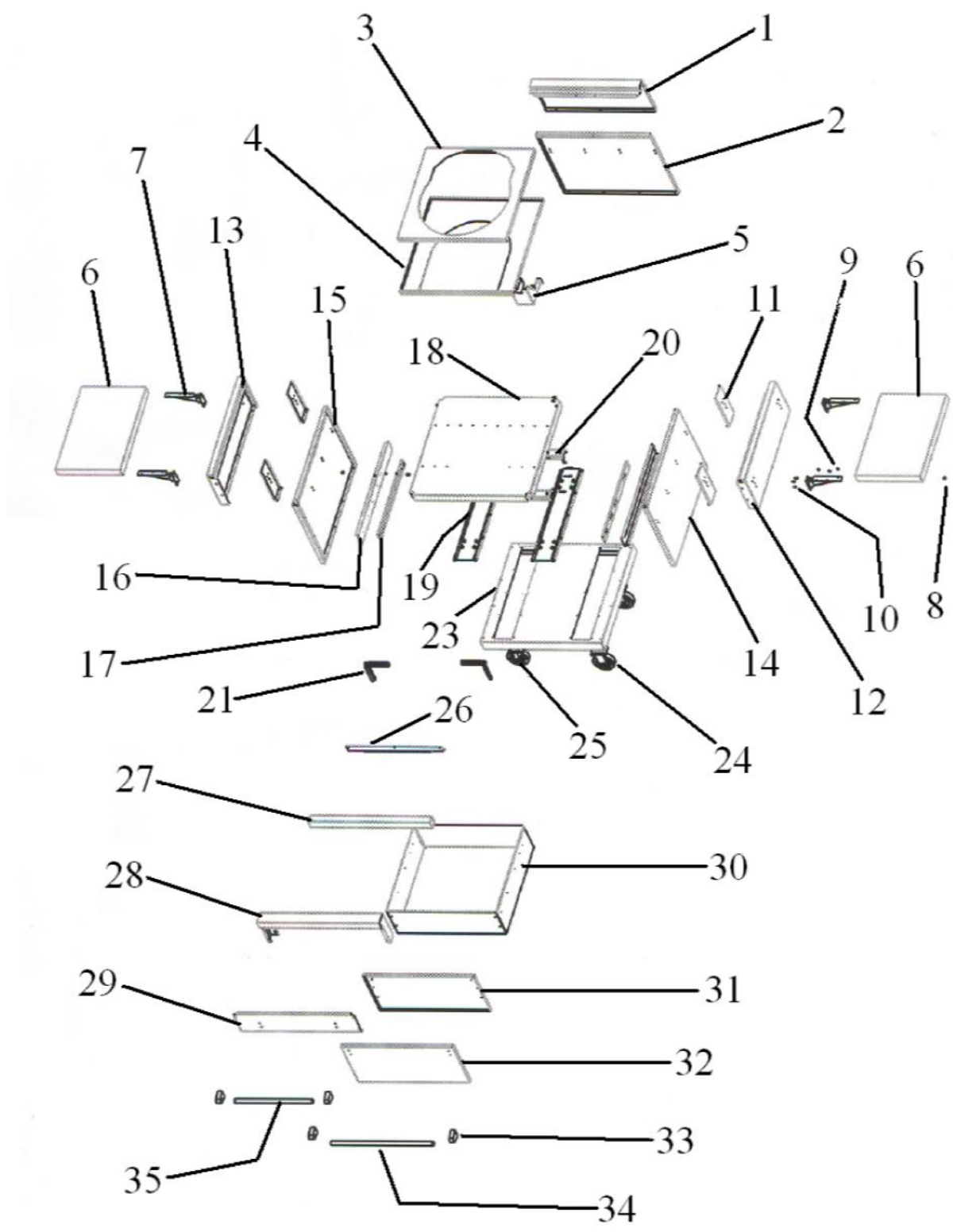
VIKING QSC30 Owner's Manual

[Shop genuine replacement parts for VIKING QSC30](#)



[Find Your VIKING Grill Parts - Select From 210 Models](#)

----- Manual continues below -----



Ref #	Part Number	Qty.	Description
1	B2009127		CART BOX BACK
2	B2006782		GRILL CART BACK 30
3	B2009129		CART TOP
	B20014409		QSC30 CART TOP (NEW)
4	B2009128		CART TOP
5	B20010699		QSC30 MOUNTING BRACKET
	B20014413		NEW HINGE BRACE
6	B3005378		SIDE SHELF PH II BQC530TSS
7	PC020031		FOLD DOWN SHELF BRACKET
8	PD040060		RUBBER GROMMET
9	PD020055		NO.10 X 1/2 PAN PHIL. TEK. SS
10	PD020056		NO.10-24 X 1/2 PH.TR. M.S. SS
11	B2007211		CART SIDE BRACE 41 & 53
12	B2009130		CART BOX SIDE RH
13	B2009131		CART BOX SIDE LH
14	B2009106		LOWER CART SIDE RH
15	B2006781		LOWER CART SIDE RH
16	B2005376		41 SLIDE BRACE
17	PC080010		SLIDE
18	B2006783		VCQS 41 CART GRILL SUPPORT
19	B2009382		CASTER BRACE
20	B2009833		VCQS 30 SMOKER SHELF BRACE
21	PM010361		VCQS CORNER FRAME LH
22	PM010360		VCQS CORNER FRAME RH
23	B3006786		30 CART BOTTOM
24	PC030021		CASTER, FIXED
25	PC030020		CASTER, SWIVEL
26	B2009136		DRIP TRAY HANDLE BRACKET
27	B3009134		FALSE TRAY HANDLE
	C9309134BR		FALSE TRAY HANDLE XBRX
28	G3009133		LANDING LEDGE ASSY - 30
29	B2009135		CONTROL PANEL 41 W SIDE BURN
30	B3006789		VCQS 41 CART DRAWER
31	B2006790		VCQS 41 CART DRAWER I.S.
32	B2006791		VCQS 41 CART DRAWER OS
33	PE030001		BRACKET, DOOR, HANDLE
	PE030001PVD		END CAP DOOR HANDLE XBR
34	PE030003		DOOR HANDLE 30
	PE030003PVD		DOOR HANDLE - BR
35	PE030060		WARMING DRAWER HANDLE SS VEWD172
	F0004886		WARMING DRAWER HANDLE XBRX VEWD172