

This Owner's Manual is provided and hosted by [Appliance Factory Parts](#).



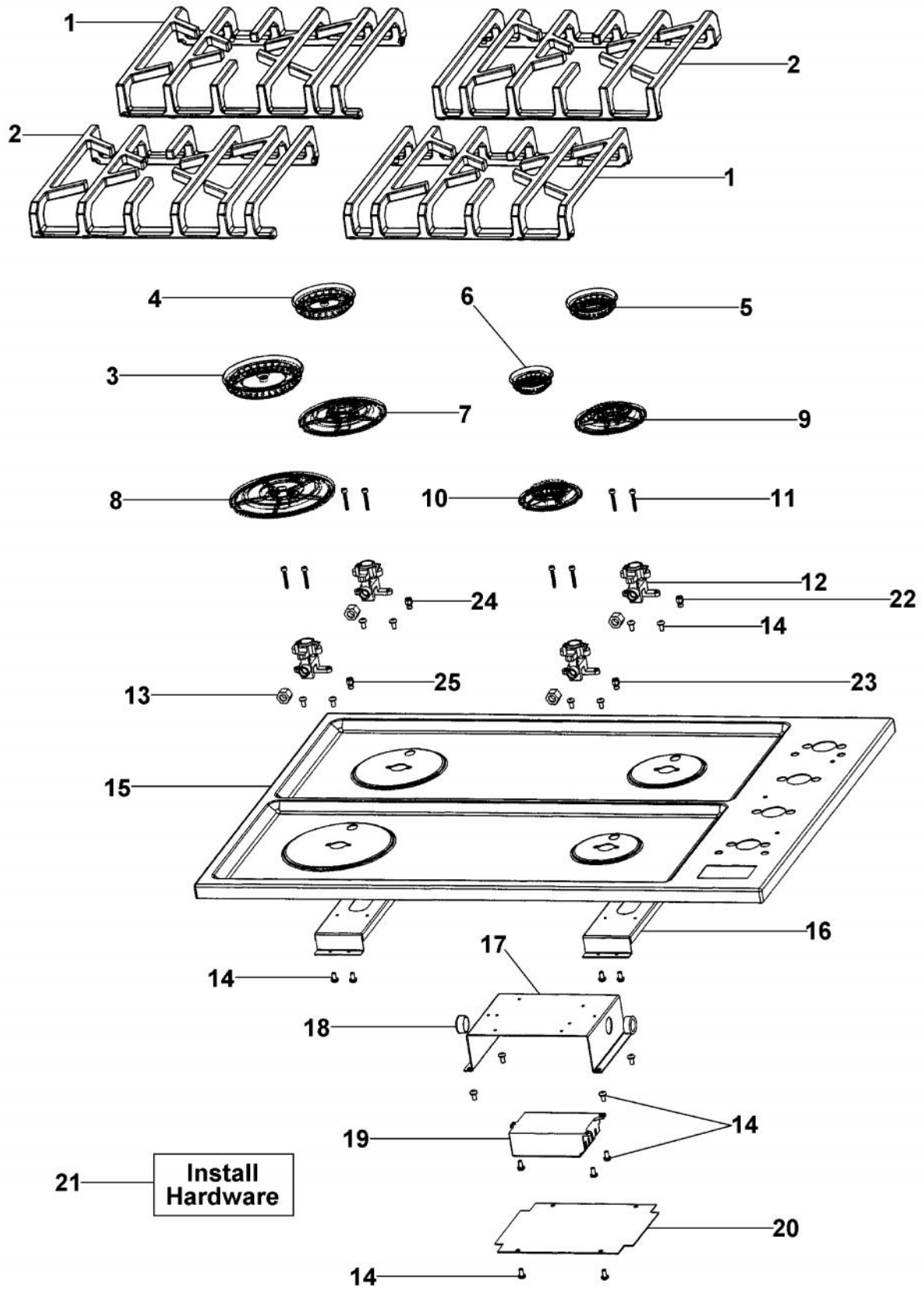
VIKING VG SU102 Owner's Manual

[Shop genuine replacement parts for VIKING VG SU102](#)

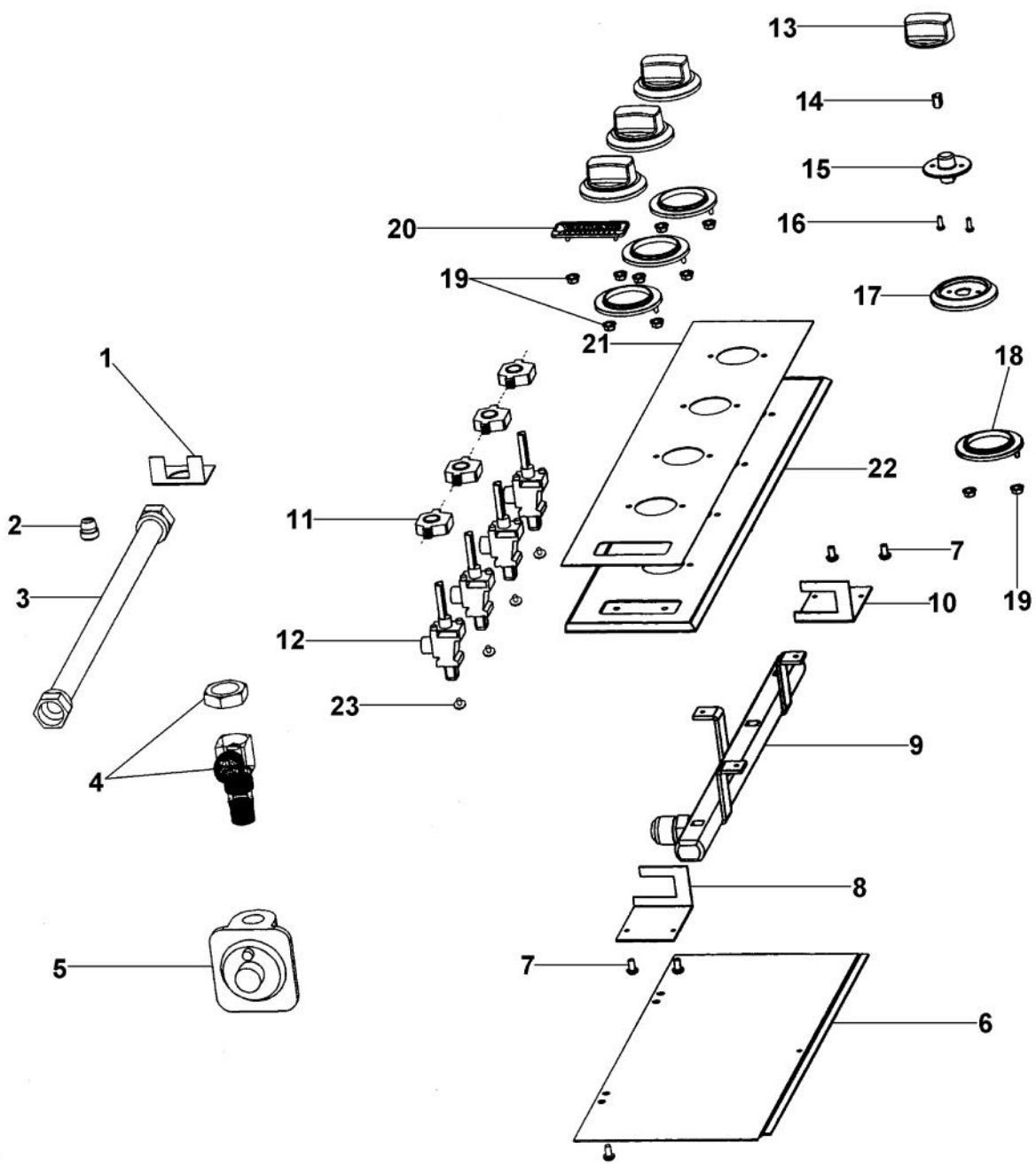


[Find Your VIKING Gas Range Parts - Select From 76 Models](#)

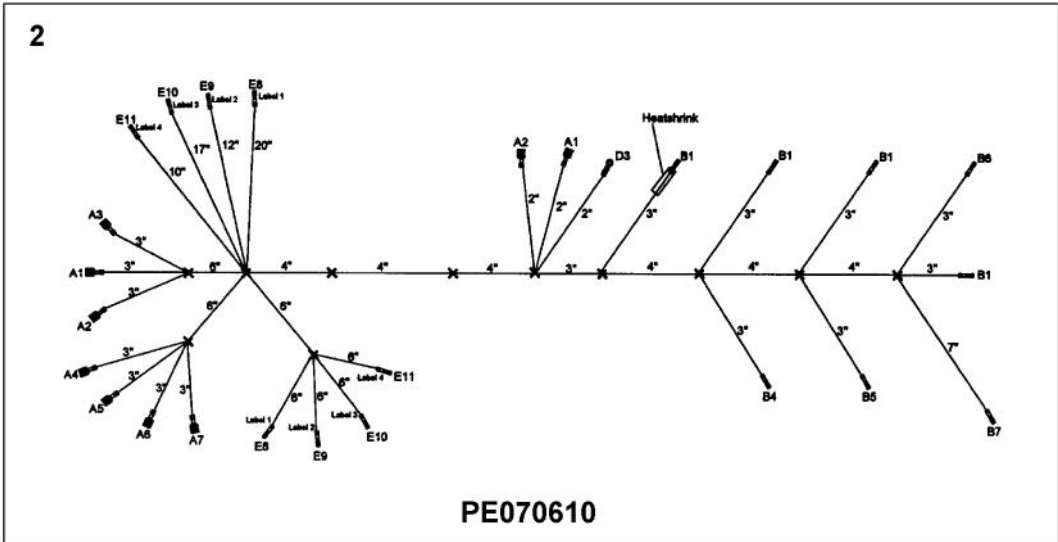
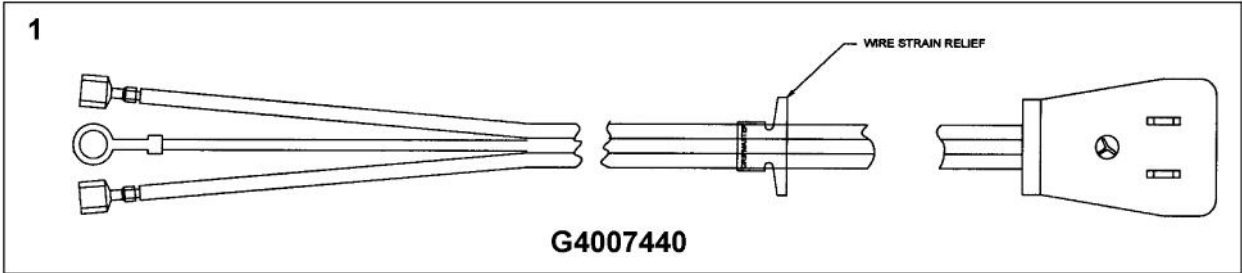
----- Manual continues below -----



Ref #	Part Number	Qty.	Description
1	PA060097		VGSU102 GRATE 2
	PA060115		30 GRATE 2 (GRAY)
2	PA060096		30 VGSU GRATE
	PA060114		30 GRATE 1 (GRAY)
3	PA080088		D-BURNER
	PA080092		D-BURNER (GRAY)
4	PA080089		C-BURNER
	PA080093		C-BURNER (GRAY)
5	PA080090		B-BURNER
	PA080094		B-BURNER (GREY)
6	PA080091		A-BURNER
	PA080095		A-BURNER (GRAY)
7	PB050070		C-BASE
8	PB050069		D-BASE
9	PB050071		B-BASE
10	PB050072		A-BASE
11	PD020159		DGSU BURNER BASE SCREW
12	PB050067		JETHOLDER
13	N/A		HEAT SHIELD - MUST ORDER ITEM NO. 11
14	PD020004		10X3/8PH.HD.TYPE 25 REPL PD040125
15	B21010611		30 MAIN TOP
	E91010611AL		VGSU102 SEALED TOP XALX
	E91010611BK		VGSU102 SEALED TOP XBKX
	E91010611BT		VGSU102 SEALED TOP XBTX
	E91010611CB		VGSU102 SEALED TOP XCBX
	E91010611EP		VGSU102 SEALED TOP XEPX
	E91010611FG		VGSU102 SEALED TOP XFGX
	E91010611GG		VGSU102 SEALED TOP XGGX
	E91010611LE		VGSU102 SEALED TOP XLEX
	E91010611MJ		VGSU102 SEALED TOP XMJX
	E91010611SG		VGSU102 SEALED TOP XSGX
	E91010611VB		VGSU102 SEALED TOP XVBX
	E91010611WH		VGSU102 SEALED TOP XWHX
16	A20010622		JET HOLDER SUPPORT
17	A2005717		SPARK MODULE BOX (DGCU)
18	PD040005		SNAP BUSHING - 7/8
19	PA020041		TYTRONICS 0+4 SPARK MODULE
20	A1005718		MODULE COVER
21	PD030029		SELF RETAINING NUT (1/4-20)
			INSTALL HARDWARE - QTY. 2
	PD010027		EYE BOLT-VGSU101/161
			INSTALL HARDWARE - QTY. 2
	A2003053		RET.BRKT VGSU101 REPL PG210006
			INSTALL HARDWARE - QTY. 2
NI	PB070058		COOKTOP GASKET-(VGSU101)
			(BETWEEN UNIT & COUNTERTOP)
NI	PB070234		GASKET (VGSU101/161)
			(BETWEEN MAIN TOP AND BURNER BOX)
22	PB040236		NO.55 NAT
	PB040257		LP ORIFICE NO.66
23	PB040199		NATURAL ORIFICE NO.56
	PB040258		LP ORIFICE NO.69
24	PB040255		NO.52 NAT
	PB040256		LP ORIFICE NO.62
25	PB040254		NO.49 NAT
	PB040199		NATURAL ORIFICE NO.56



Ref #	Part Number	Qty.	Description
1	A2007840		DGSU BULKHEAD BRACKET
2	PE070069		STRAIGHT-THRU BUSHING
3	PB020254		5/8 FLEX TUBE 15
4	PB040231		90 DEGREE BULKHEAD ELBOW W / LOCKNUT
5	PA070004		PRESSURE REG.(NAT.) RV47L-77-5.0
	PA070005		PRESSURE REG.(LP) RV47L-77-10.0
6	A20010614		ACCESS COVER PLATE
7	PD020004		10X3/8PH.HD.TYPE 25 REPL PD040125
8	A20010621		VGSU MANIFOLD BRACKET (FRONT)
9	PA050097		30 VGSU MANIFOLD
10	A20010620		VGSU MANIFOLD BRACKET (REAR)
11	PA020015		SPARK IGNITION SWITCH
12	PA010094		SUB TO 003577-000 - DGCU GAS VALVE (DESIGNER SERIES)
NI	PB020252		FLEX TUBE 35
NI	PB020190		10 FLEX TUBE
13	PA010174		COOKTOP KNOB BLACK
	PA010175		COOKTOP KNOB (WHITE)
14	PC010007		KNOB SPRING (GOLD CORE KNOBS)
15	PA010148		VGSU KNOB INSERT
16	PD020076		6-32 X 3/8 PHILL PAN MS
17	PB010263		UPPER BEZEL
	PB010263PVD		UPPER BEZEL BRASS (BLACK)
18	PB010262		LOWER BEZEL
19	PD030006		CAPPED WASHER PAL NUT
20	PE010165		VIKING CHROME PLATE LOGO
	PE010166		VIKING LOGO BRASS
	PE010176		2.5 WHITE CHROME LOGO
	PE010177		2.5 WHITE BRASS LOGO
21	PE010171		30 VGSU INSERT
	PE010172		30 VGSU INSERT (WH)
22	PE040223		VGSU102 CTRL PNL
	PE040223PVD		VGSU102 CTRL PNL XPV DX
23	PD010012		VALVE BOLT 1/4-20 UNC-2B 5/16 M.S.



Ref #	Part Number	Qty.	Description
1	G4007440		SUPPLY CORD ASSY
2	PE070610		VGSU102 WIRE HARNESS