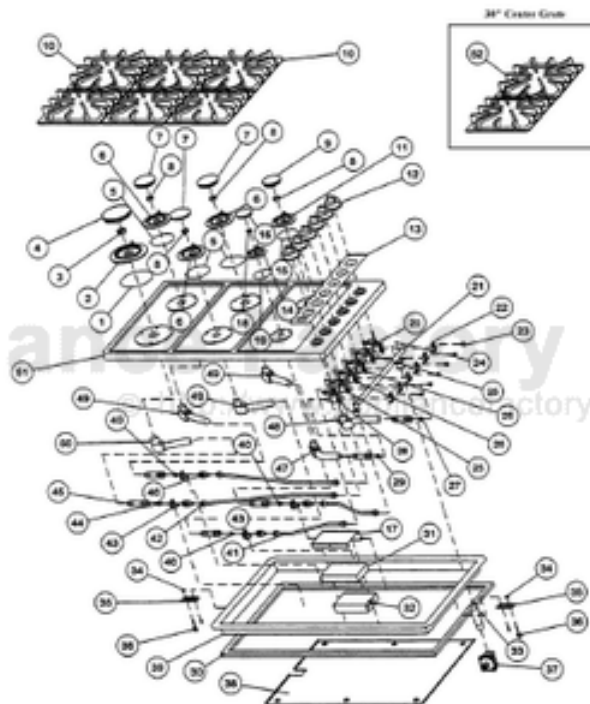


This Owner's Manual is provided and hosted by [Appliance Factory Parts](#).



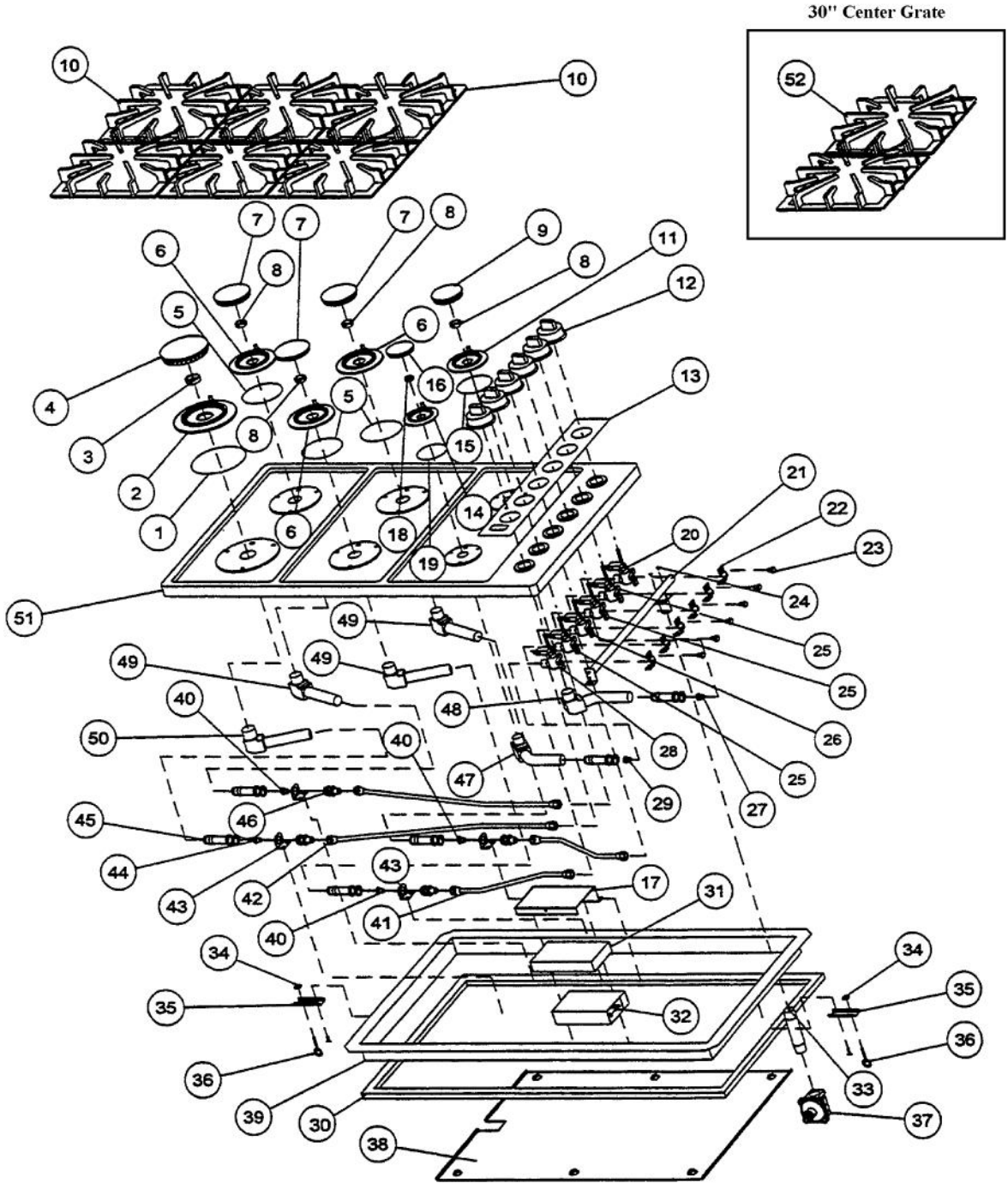
VIKING VGSU161_3 Owner's Manual

[Shop genuine replacement parts for VIKING
VGSU161_3](#)



[Find Your VIKING Gas Range Parts - Select From 76 Models](#)

----- Manual continues below -----



Ref #	Part Number	Qty.	Description
1	PB070063		B.BASE O-RING (VGSU) NO.25-000-004-46
2	PB050032		BURN. BASE VGSU(LF)REPL PG230023
3	PD030037		RETAINER RING REPL PG200011
4	PA080088		D-BURNER
	PA080092		D-BURNER (GRAY)
5	PB070062		B.BASE O-RING (VGSU) NO.25-000-004-33
6	PB050033		BUR.BASE(CF,R,LR)REPL PG230022
7	PA080089		C-BURNER
	PA080093		C-BURNER (GRAY)
8	PD030038		RETAINER RING REPL PG200010
9	PA080090		B-BURNER
	PA080094		B-BURNER (GREY)
10	PA060032		VGSU160 MT-BK GRATES REPL PA060020
	PA060033		VGSU160 MT-GY GRATE REPL PA060021
11	PB050034		BURNER BASE VGSU RR REPL PG230021
12	PB010154		TOP BURNER KNOB-XBKX (VGSU)
	PB010155		TOP BURNER KNOB-XWHX (VGSU)
No.	PB010152		KNOB BEZEL-CHROME (30 B-IN OVEN)
	PB010153		KNOB BEZEL-XBRX (30 B-IN OVEN)
13	PE040057		CTRL PAN-SS/BK-LOGO (VGSU161)
	PE040058		CTRL PAN-SS/WH-LOGO (VGSU161)
14	PB050035		BURNER BASE VGSU RF REPL PG230020
15	PB070061		B.BASE O-RING (VGSU) NO.25-000-004-28
16	PA080091		A-BURNER
	PA080095		A-BURNER (GRAY)
17	A2003066		SPARK MODULE COVER - VGSU161
18	PD030039		RETAINER RING REPL PG200009
19	PB070060		B.BASE O-RING (VGSU) NO.25-000-004-27
20	PA010061		TB.VALVE(VGSU)REPL PG230002
21	PA050052		MANIFOLD (VGSU161)REPL PG230005
22	PB070059		FIXING CLIP(VGSU)REPL PG200001
23	PD010029		BOLT M5X10 PAN PH M.S. (VGSU101)
24	PD020006		NO.6-32 X 1/4 PH.PAN HD. T(F)
25	PA010062		TB.VALVE(VGSU)REPL PG230003
26	PA010063		TB.VALVE(VGSU)REPL PG230004
27	PG230031		ORIFICE HOOD-NO.55/132NAT -R)
	PG230036		ORIFICE HOOD-NO.65/90LP (R-R)
28	PA010060		TB.VALVE(VGSU)REPL PG230001
29	PG230032		ORIFICE HOOD-NO.58/107 NAT-F)
	PG230036		ORIFICE HOOD-NO.65/90LP (R-R)
30	PB070058		COOKTOP GASKET-(VGSU101)
31	PB070034		INSULATION-TRS-10 1 X 20 X 3'
32	PA020042		TYTRONICS 0+6 SPARK MODULE
33	PA050033		PIPE NIPPLE - 1/2 X 3
34	PD030029		SELF RETAINING NUT (1/4-20)
35	A2003053		RET.BRKT VGSU101 REPL PG210006
36	PD010027		EYE BOLT-VGSU101/161
37	PA070004		PRESSURE REG.(NAT.) RV47L-77-5.0
	PA070005		PRESSURE REG.(LP) RV47L-77-10.0
38	A2003065		36 HEAT SHIELD - VGSU161
39	A3003064		BURNER BOX BTM-(VGSU161) (WELDED)
40	PG230030		ORIFICE HOOD-NO.53/150NATC-F,C-R,L-R)
	PG230034		ORIFICE HOOD-NO.60/102LP(C-F,C-R,L-R)
41	PB020073		TUBING (VGSU161) REPL PG230010
42	PB020074		BUR.MANIFOLD TUBING REPL PG230011
43	A2003052		TUBING BRKT. REPL PG210003
44	PG230029		ORIFICE HOOD-NO.52/160NATL-F)
45	PB050040		AIR MIXER (VGSU)REPL PG230028
46	PB040119		ORIFICE ADAP.(VGSU) NO.GD-1150001-DOU
47	PB050043		BUR.VENT.90DEG RF REPL PG230027

Ref #	Part Number	Qty.	Description
47	PB050043		BUR.VENT.90DEG RF REPL PG230027
48	PB050042		BUR.VENT.90DEG RR REPL PG230026
49	PB050029		BURNER VENT.90DEG REPL PG230025
50	PB050028		BUR VENT.90DEG REPL PG230024
51	B2102872		COOKTOP SURFACE 36
	E9102872BK		COOKTOP SURFACE XBKX 36
	E9102872WH		COOKTOP SURFACE, WH (161)
52	PA060034		CENTER GRATE-MATT XBKX (VGSU101)
	PA060035		CENTER GRATE-MATT GRAY (VGSU101)
No.	PE070179		SUPPLY CORD

*No Image
Available*

Ref #	Part Number	Qty.	Description
No.	G4003057	1	IGNITOR WIRE - 16 (VGSU101/161)
No.	G4003058	1	IGNITOR WIRE - 20 (VGSU101/161)
No.	G4003059	1	IGNITOR WIRE - 9 (VGSU101/161)
No.	G4003069	2	IGNITOR WIRE - 25 (VGSU101/161)
No.	G4003070	1	IGNITOR WIRE - 22 (VGSU101/161)