

This Owner's Manual is provided and hosted by [Appliance Factory Parts](#).



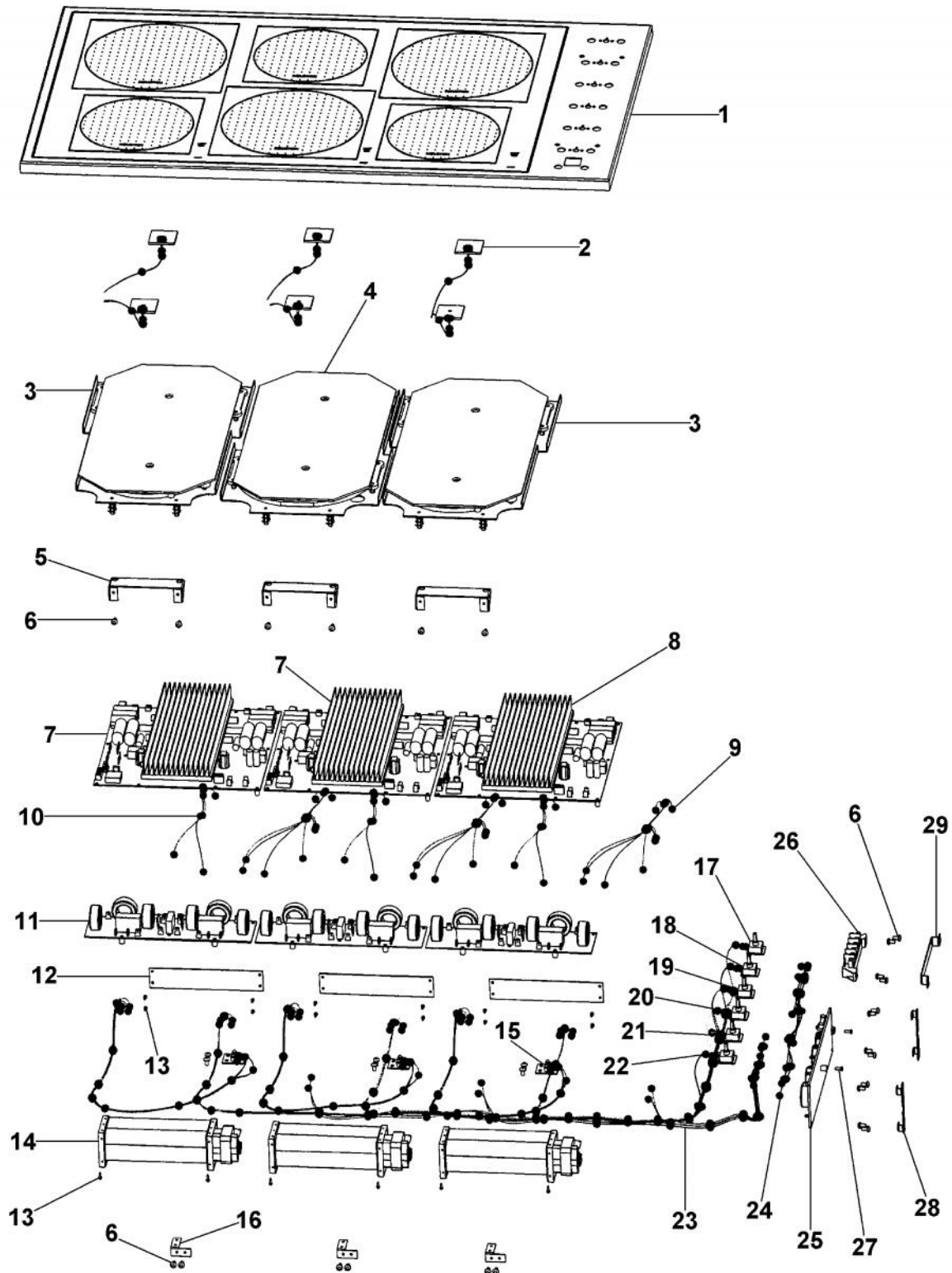
VIKING VICU165_1 Owner's Manual

[Shop genuine replacement parts for VIKING VICU165_1](#)

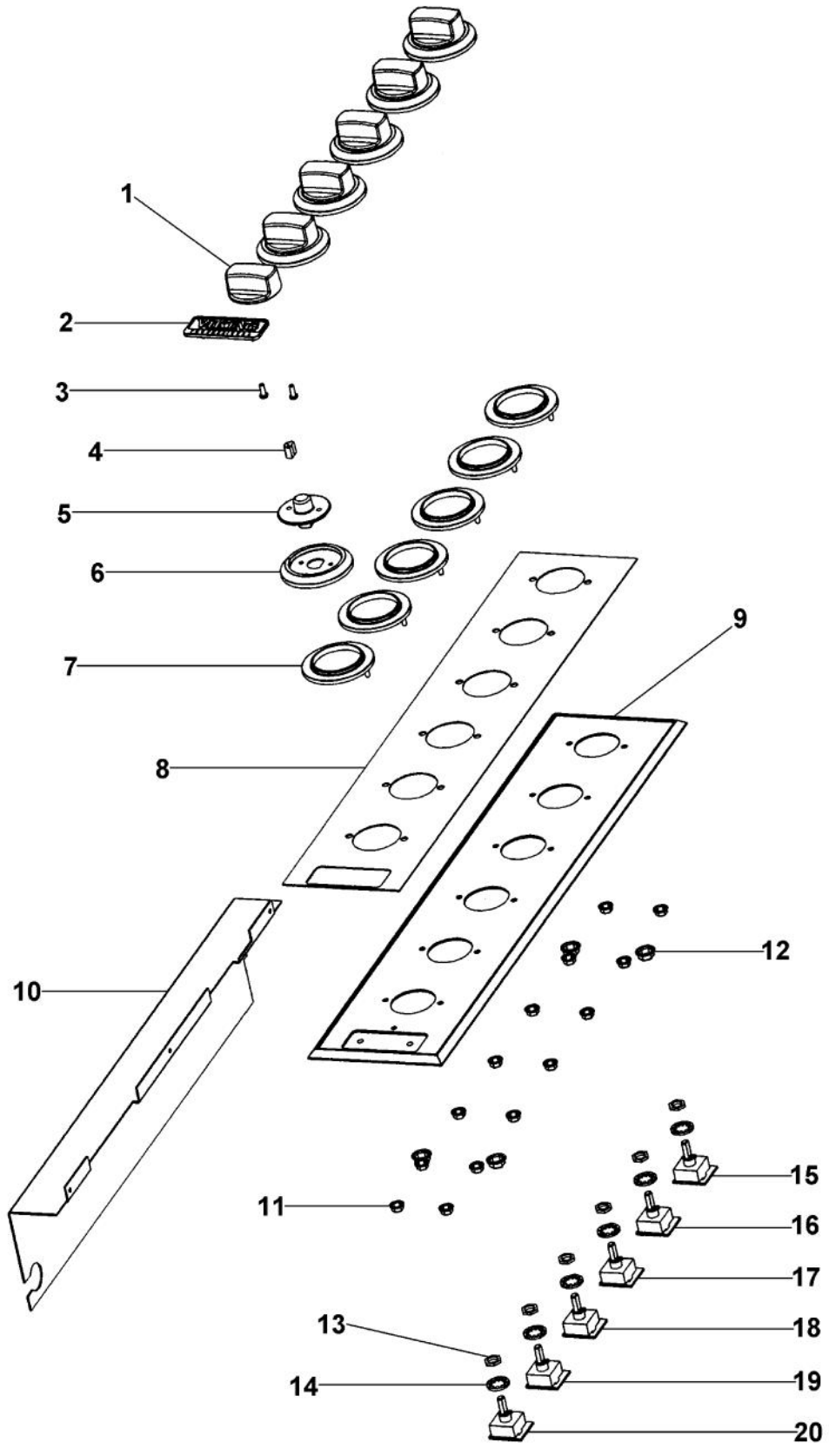


[Find Your VIKING Gas Range Parts - Select From 76 Models](#)

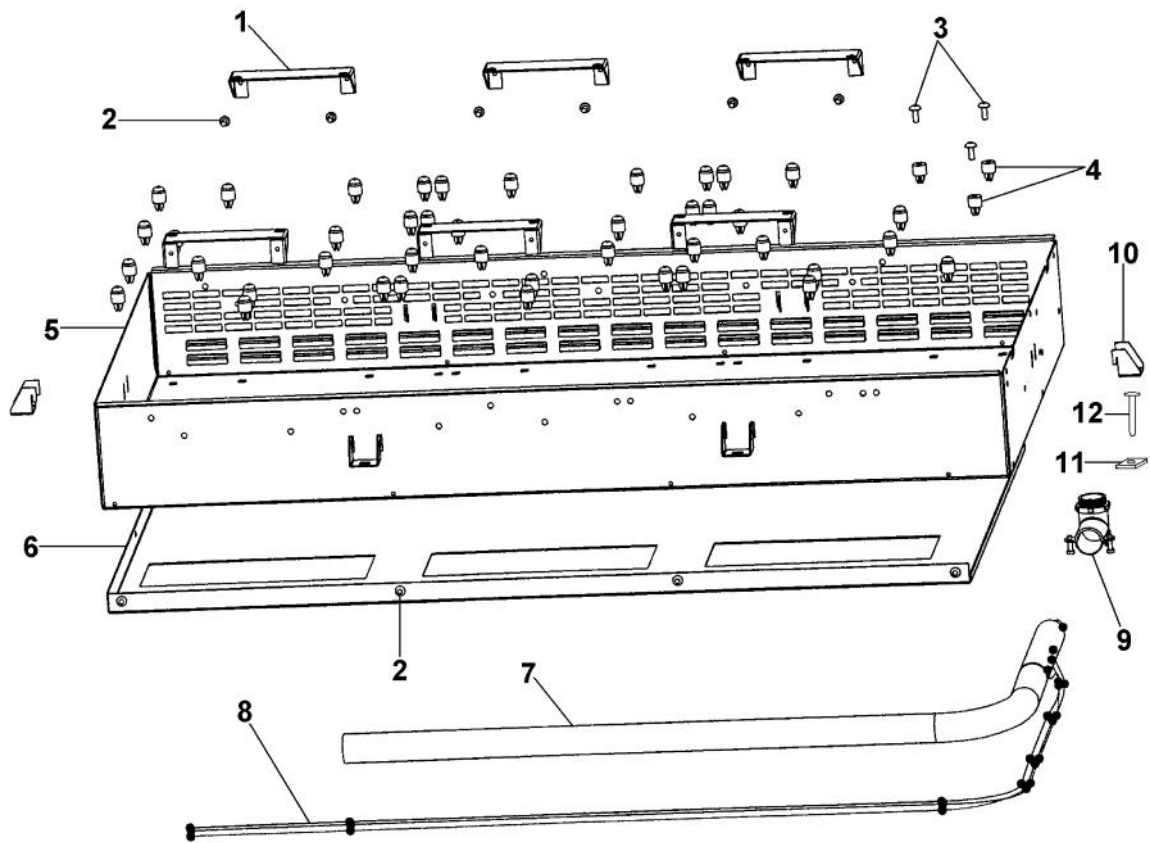
----- Manual continues below -----



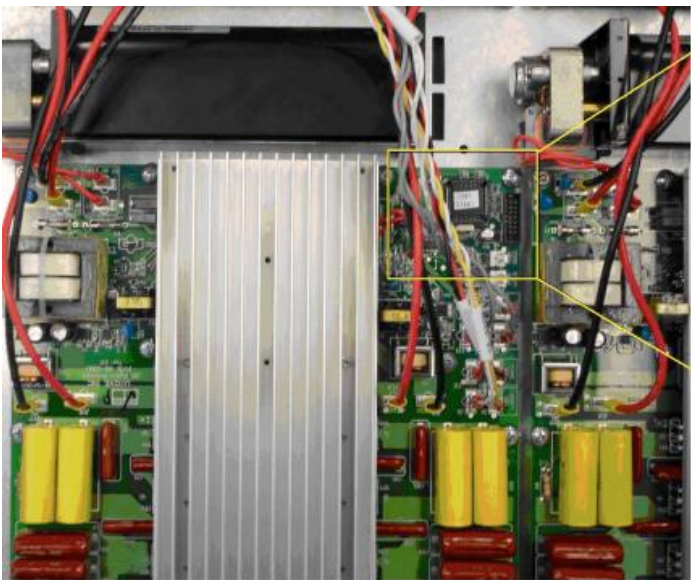
Ref #	Part Number	Qty.	Description
1	G50012151 G50012938		36 VICU TOP ASSY 36 VICU TOP ASSY WH
2	PE070761		INDUCTION THERMAL LIMITER
3	PE070688		ALL INDUCTION COIL TRAY ASSEMBLY (INC. HARNESS)
4	PE070689		ALL INDUCTION COIL TRAY ASSEMBLY (INC. HARNESS)
5	A2005077		COIL TRAY BRACKET
6	PD020004		10X3/8PH.HD.TYPE 25 REPL PD040125
7	PE070681		LEFT & MIDDLE SECTION POWER BOARD
8	PE070596		ALL INDUCTION POWER BOARD
9	PE070692		EMI TO POWER HARNESS 1 (RED WIRE - 12" / BLACK WIRE - 13")
10	PE070693		EMI TO POWER HARNESS 2 (RED WIRE - 9" / BLACK WIRE - 10")
11	PE070597		ALL INDUCTION EMI BOARD
12	A10012995		FAN SHIELD
13	PD020013		TYPE AB NO.6 X 3/8 PH PAN HD. SMS
14	PE070635		VICU COOLING FAN (INC. HARNESS)
15	PE070519		INDUCTION LED ASSEMBLY (INC. HARNESS)
16	A20010645		INDUCTION LED BRACKET
17	PE070687		POT ASSY-BLUE 59 (12-4506) (INC. HARNESS)
18	PE070686		POT ASSY-GRAY 61 (12-4507) (INC. HARNESS)
19	PE070685		POT ASSY - RED 46 (12-4505) (INC. HARNESS)
20	PE070684		POT ASSY- YELLOW 50 (12-4508) (INC. HARNESS)
21	PE070683		POT ASSY- WHITE 33 (12-4500) (INC. HARNESS)
22	PE070682		POT ASSY - BLACK 27 (12-4504) (INC. HARNESS)
23	PE070691		CONDITIONER TO EMI HARNESS
24	PE070690		BLOCK TO CONDITIONER HARNESS
25	PE070627		VICU EMI FILTER
26	PE070231		TERMINAL BLOCK - 6 POLE (HEYCO)
27	PD020183		6 X 32 GREEN GROUNDING SCREW
28	A20012988		BOARD MOUNTING BRACKET
29	A2005084		INDUCTION TERMINAL BOARD BRACKET
NI	PS000001		20 AMP FAST ACTING CERAMIC FUSE



Ref #	Part Number	Qty.	Description
1	PA010174		COOKTOP KNOB BLACK
	PA010175		COOKTOP KNOB (WHITE)
	036415-000		KNOB, BODY VGSU CR3
2	PE010165		VIKING CHROME PLATE LOGO
	PE010166		VIKING LOGO BRASS
	PE010176		2.5 WHITE CHROME LOGO
	PE010177		2.5 WHITE BRASS LOGO
3	PD020076		6-32 X 3/8 PHILL PAN MS
4	PC010007		KNOB SPRING (GOLD CORE KNOBS)
5	PA010180		VCCU KNOB MOUNT CORE
6	PB010263		UPPER BEZEL
	PB010263PVD		UPPER BEZEL BRASS (BLACK)
7	PB010262		LOWER BEZEL
8	PE040258		VICU 36 CONTROL PANEL INLAY
	PE040267		VICU 36 CONTROL PANEL INLAY WHITE GRAPHICS
9	PE040251		36 ELECTRIC CONTROL PANEL
	PE040251PVD		36 ELECTRIC CONTROL PANEL XPVDX
10	B20012989		BOARD SHIELD
11	PD030006		CAPPED WASHER PAL NUT
12	PD030137		CAPPED WASHER PAL NUT
13	PD030114		INDUCTION CONTROL NUT
14	PD040117		10 MM WASHER
15	PE070687		POT ASSY-BLUE 59 (12-4506) (INC. HARNESS)
16	PE070686		POT ASSY-GRAY 61 (12-4507) (INC. HARNESS)
17	PE070685		POT ASSY - RED 46 (12-4505) (INC. HARNESS)
18	PE070684		POT ASSY- YELLOW 50 (12-4508) (INC. HARNESS)
19	PE070683		POT ASSY- WHITE 33 (12-4500) (INC. HARNESS)
20	PE070682		POT ASSY - BLACK 27 (12-4504) (INC. HARNESS)



Ref #	Part Number	Qty.	Description
1	A2005077		COIL TRAY BRACKET
2	PD020004		10X3/8PH.HD.TYPE 25 REPL PD040125
3	PD010003		10-24 X 1/2 PH.TR.HD.SERD.M.S.
4	PD030033		GROMMET NUT-ROUND HD. NO.8 X .500DIA.
5	A30012693		VICU36 BOX
6	A20012694		VICU36 BOTTOM COVER
7	PB020259		3/4 CONDUIT
8	PE070562		RED WIRE (8 GA. SF-2 200 DEG.C 600V)
	PE070563		BKX WIRE (8 GA.SF-2 200DEG.C600V)
	G4003016		GREEN - SUPPLY WIRE
9	PB040259		90 DEG. 3/4 CONDUIT FITTING
NI	PD040034		CONDUIT GROMMET (1/2)
10	A2005721		MOUNT BRACKET (DECU)
			INSTALL HARDWARE - QTY. 6
11	PD030029		SELF RETAINING NUT (1/4-20)
			INSTALL HARDWARE - QTY. 6
12	PD020123		BOLT 1/4-20 X 3 HEX HD
			INSTALL HARDWARE - QTY. 6



Ref #	Part Number	Qty.	Description
-------	-------------	------	-------------
