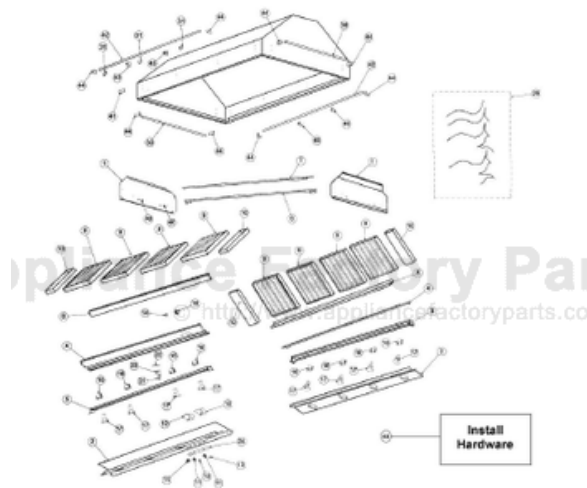


This Owner's Manual is provided and hosted by Appliance Factory Parts.



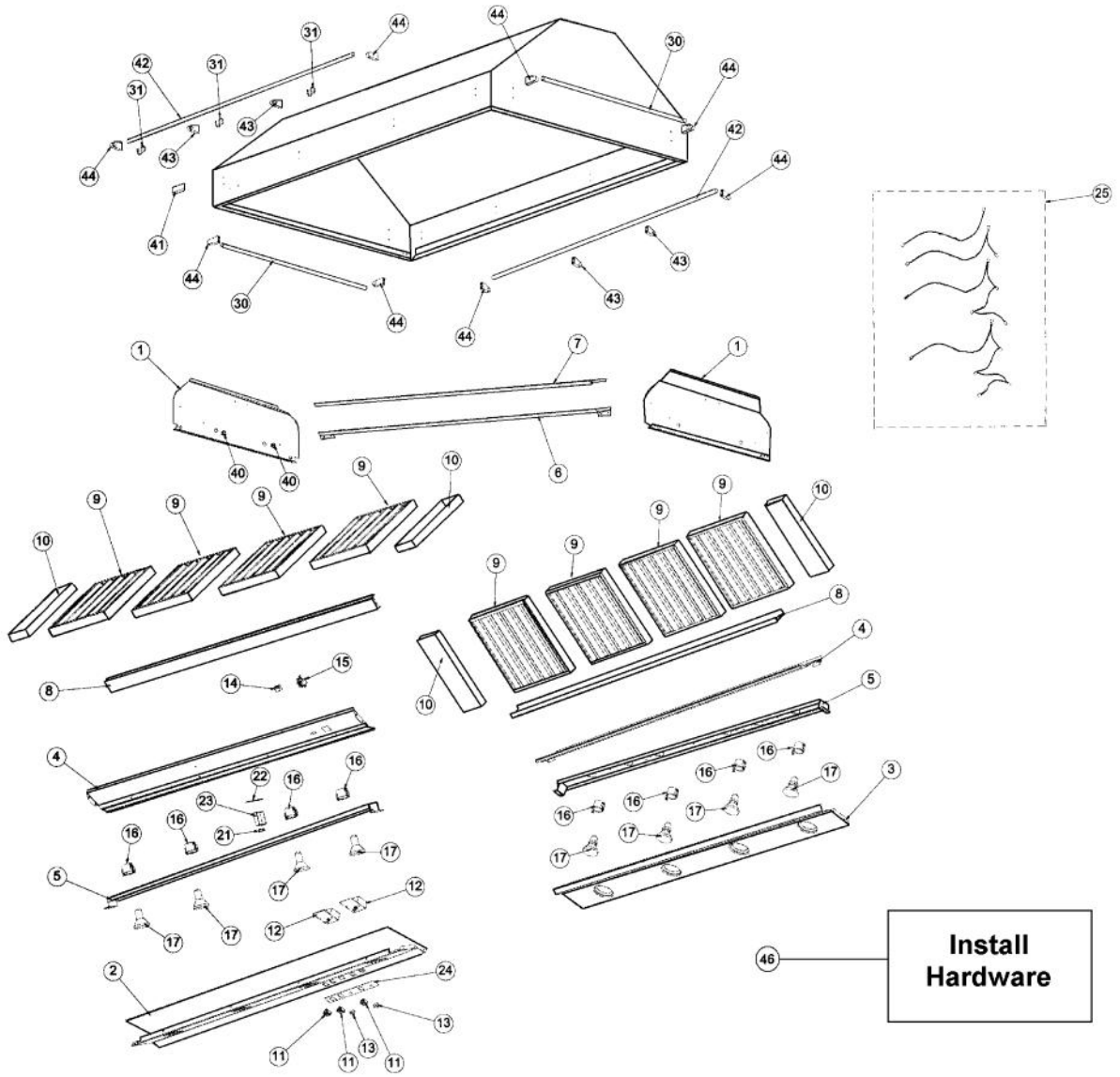
VIKING VIH4208 Owner's Manual

[Shop genuine replacement parts for VIKING VIH4208](#)



[Find Your VIKING Range Hoods Parts - Select From 411 Models](#)

----- Manual continues below -----



| Ref # | Part Number | Qty. | Description |
|-------|-------------|------|--------------------------------------|
| 1 | B2004061 | | HOOD I/S SIDE RH/LH(VIH36/42/54/66) |
| 2 | B2004068 | | CTRL PAN FRONT (VIH4208) |
| 3 | B2004065 | | CTRL PAN REAR (VIH4208) |
| 4 | B2004069 | | CTRL PAN TOP (VIH4208) |
| 5 | A2004096 | | LIGHT SUPT (VIH42) |
| 6 | B2004092 | | HOOD FILTER SUPT BTM (VIH4208) |
| 7 | B2004072 | | HOOD FILTER SUPT TOP (VIH4208) |
| 8 | B2003887 | | GREASE TROUGH (VWH4248)/78 |
| 9 | G3103955 | | FILTER ASSEMBLY 13.375 X 7 |
| 10 | B2004083 | | FILTER SPACER (VIH36/42) 5.895 X 7 |
| 11 | PE050048 | | FAN/LIGHT SWITCH (HOODS) EP0M11J |
| 12 | PE050141 | | PRO LIGHT CONTROL |
| 13 | PA010071 | | LIGHT/MOTOR CONTROLLER KNOB |
| 14 | PE070196 | | FEMALE SOCKET (2 PRONG) |
| 15 | PE070197 | | MALE SOCKET (3 PRONG) |
| 16 | PE050032 | | LIGHT SOCKET, (571V) |
| 17 | PE050034 | | HALOGEN BULB 50W |
| 18 | N/A | | HEAT SHIELD - MUST ORDER ITEM NO. 11 |
| 19 | N/A | | HEAT SHIELD - MUST ORDER ITEM NO. 11 |
| 20 | N/A | | HEAT SHIELD - MUST ORDER ITEM NO. 11 |
| 21 | PJ030014 | | HEAT SENSOR (N.O.) 160 DEG. |
| 22 | B2003837 | | HEAT SENSOR BRKT |
| 23 | A2103810 | | THERMODISC BRACKET |
| 24 | PE040131 | | CTRL PNL GRPH REPL (30/3610 36/4208) |
| 25 | PE070381 | | VIH36/42 WIRE HARNESS |
| 26 | Order No.25 | | THERMODISC HARNESS |
| 27 | Order No.25 | | THERMODISC HARNESS |
| 28 | Order No.25 | | THERMODISC HARNESS |
| 29 | Order No.25 | | THERMODISC HARNESS |
| 30 | F0003878 | | ISLAND HOOD XSSX SIDE RAIL - CUT TO |
| | F0003877 | | SIDE RAIL - BRASS |
| 31 | PE030076 | | CHROME S HOOKS REPL PV100012SS |
| | PE030077 | | BR `S` HOOKS REPL PV100012BR |
| 32 | PC040010 | | POP RIVET |
| 33 | PD020010 | | 10 X 3/8 GREEN GROUNDING SCREW |
| 34 | PD010037 | | NO.10-24 WELD STUD |
| 35 | PD030006 | | CAPPED WASHER PAL NUT |
| 36 | PD020009 | | 10 X 1 PH. HD. PAN HD. SMS |
| 37 | PD020087 | | 10 X 1/2 PAN PH. TEK ZINC |
| 38 | PD030010 | | NO.10-24 KEPS NUT |
| 39 | PD030059 | | TINNERMAN CLIP |
| 40 | PD040005 | | SNAP BUSHING - 7/8 |
| 41 | PE010142 | | 3 LOGO XBKXXCHROME |
| | PE010144 | | 3 LOGO XWHXCHROME |
| | PE010143 | | 3 LOGO BK/BR |
| | PE010145 | | LOGO - WH / BR |
| | PE010151 | | 3 ULTRALINE PROF. LOGOXBKXCHROME |
| | PE010153 | | 3 ULTRALINE PROF. LOGOXWHXCHROME |
| | PE010152 | | 3 ULTRALINE PROF. LOGOXBKXBRX |
| | PE010154 | | 3 ULTRALINE PROF. LOGOXWHXXBRX |
| 42 | PE030121 | | ACCESSORY RAIL - SS |
| | F0003870 | | 42 - XBRX CUT TO SIZE FRONT/REAR R |
| 43 | PE030052 | | SUPPORT TUBE, HOLE THROUGH |
| | PE030053 | | MIDDLE RAIL SUPPORT - BR |
| 44 | PE030054 | | END CAP - SS |
| | PE030055 | | END CAP - BR |
| NI | PD010003 | | 10-24 X 1/2 PH.TR.HD.SERD.M.S. |
| 45 | PE050156 | | PRO BLOWER CONTROL |
| 46 | PD020009 | | 10 X 1 PH. HD. PAN HD. SMS |
| | | | INSTALL HARDWARE - QTY. 8 |

| Ref # | Part Number | Qty. | Description |
|-------|-------------|------|--|
| NI | PD030010 | | INSTALL HARDWARE - QTY. 8 NO.10-24 KEPS NUT |
| NI | PD020010 | | INSTALL HARDWARE - QTY. 4 10 X 3/8 GREEN GROUNDING SCREW INSTALL HARDWARE - QTY. 1 |



| Ref # | Part Number | Qty. | Description |
|-------|-------------|------|-------------|
|-------|-------------|------|-------------|
