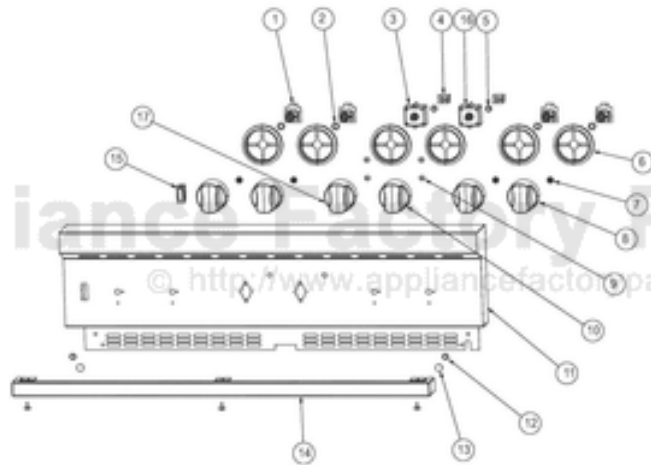


This Owner's Manual is provided and hosted by [Appliance Factory Parts](http://www.appliancefactoryparts.com).



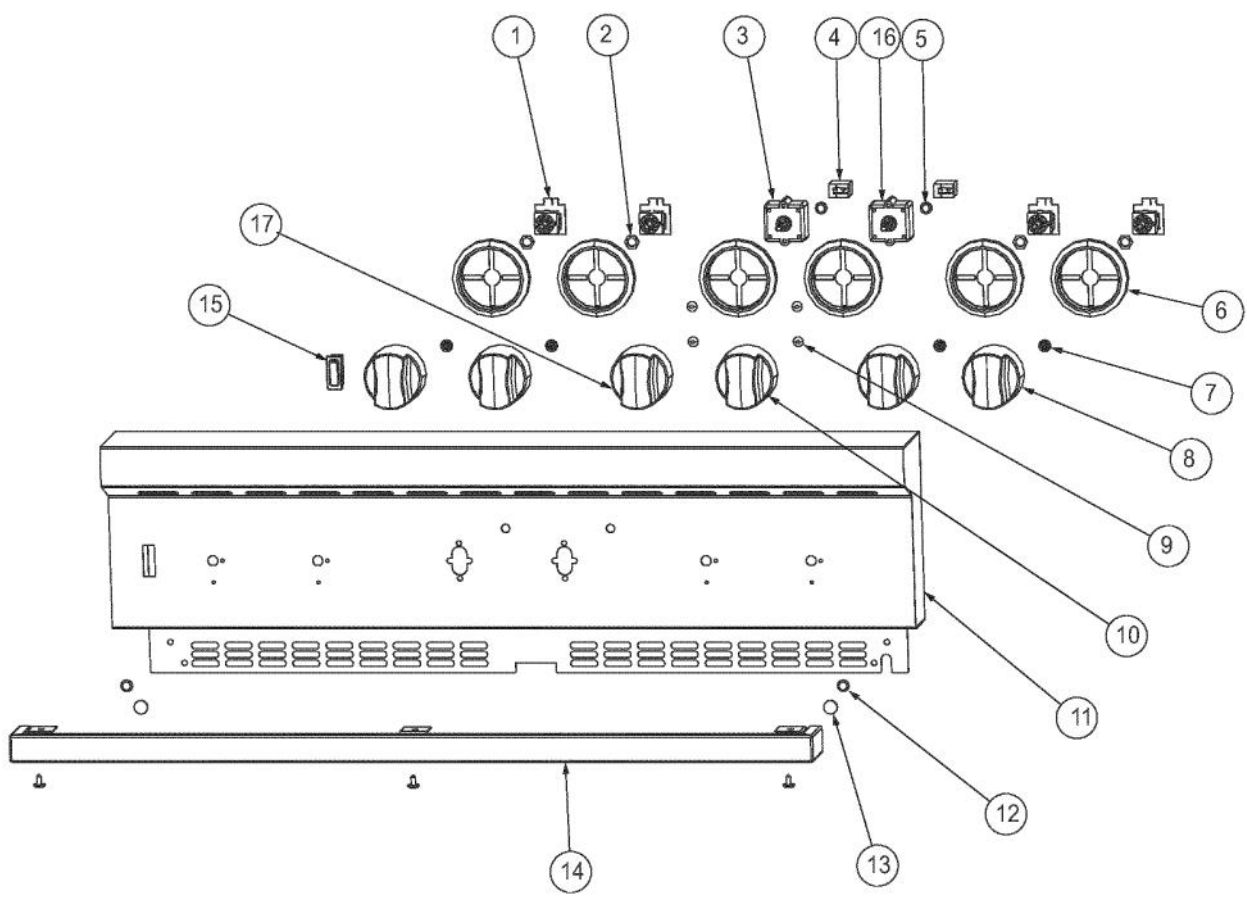
VIKING VISC5304 Owner's Manual

[Shop genuine replacement parts for VIKING VISC5304](#)

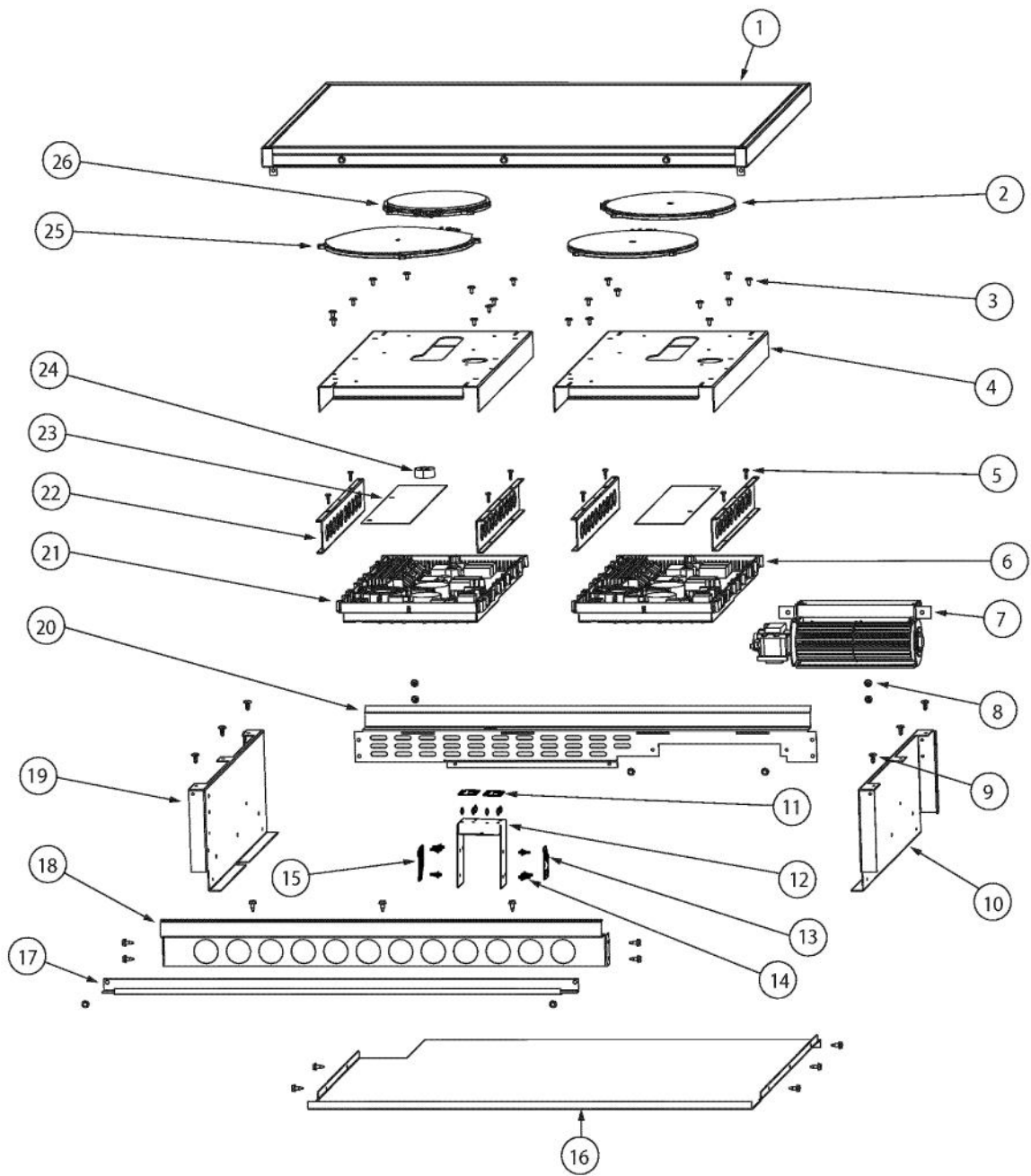


[Find Your VIKING Range Hoods Parts - Select From 411 Models](#)

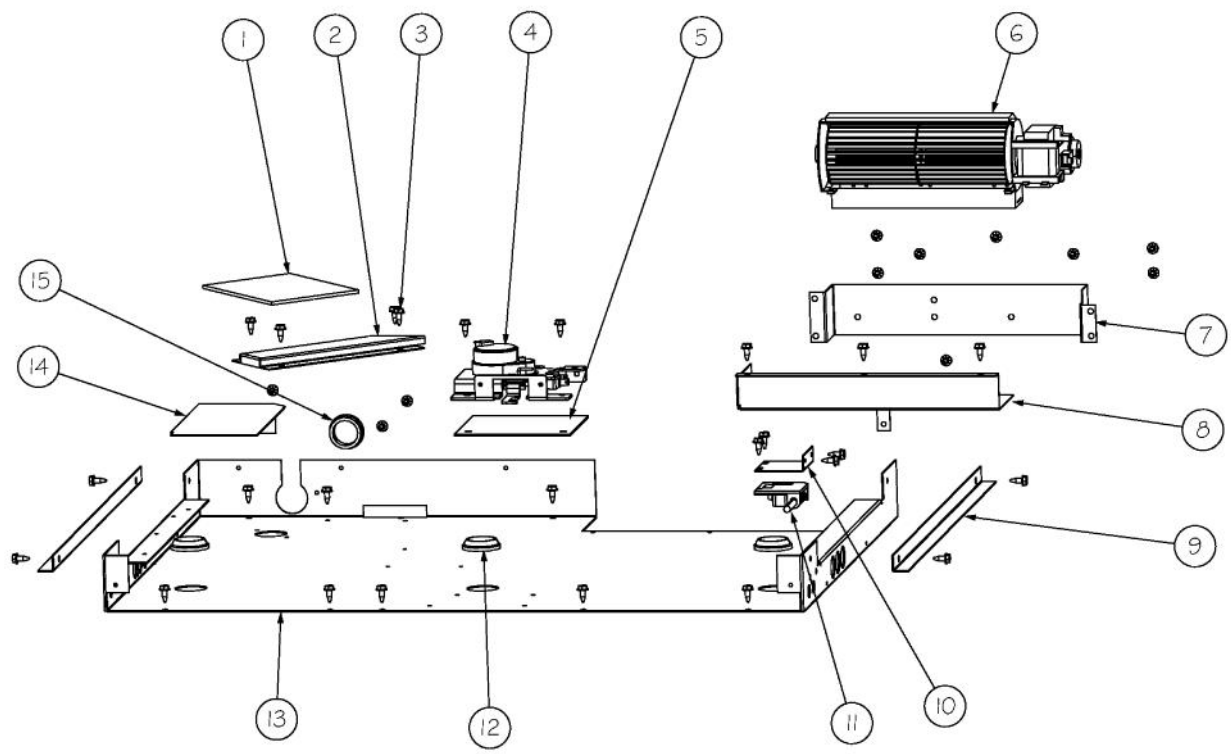
----- Manual continues below -----



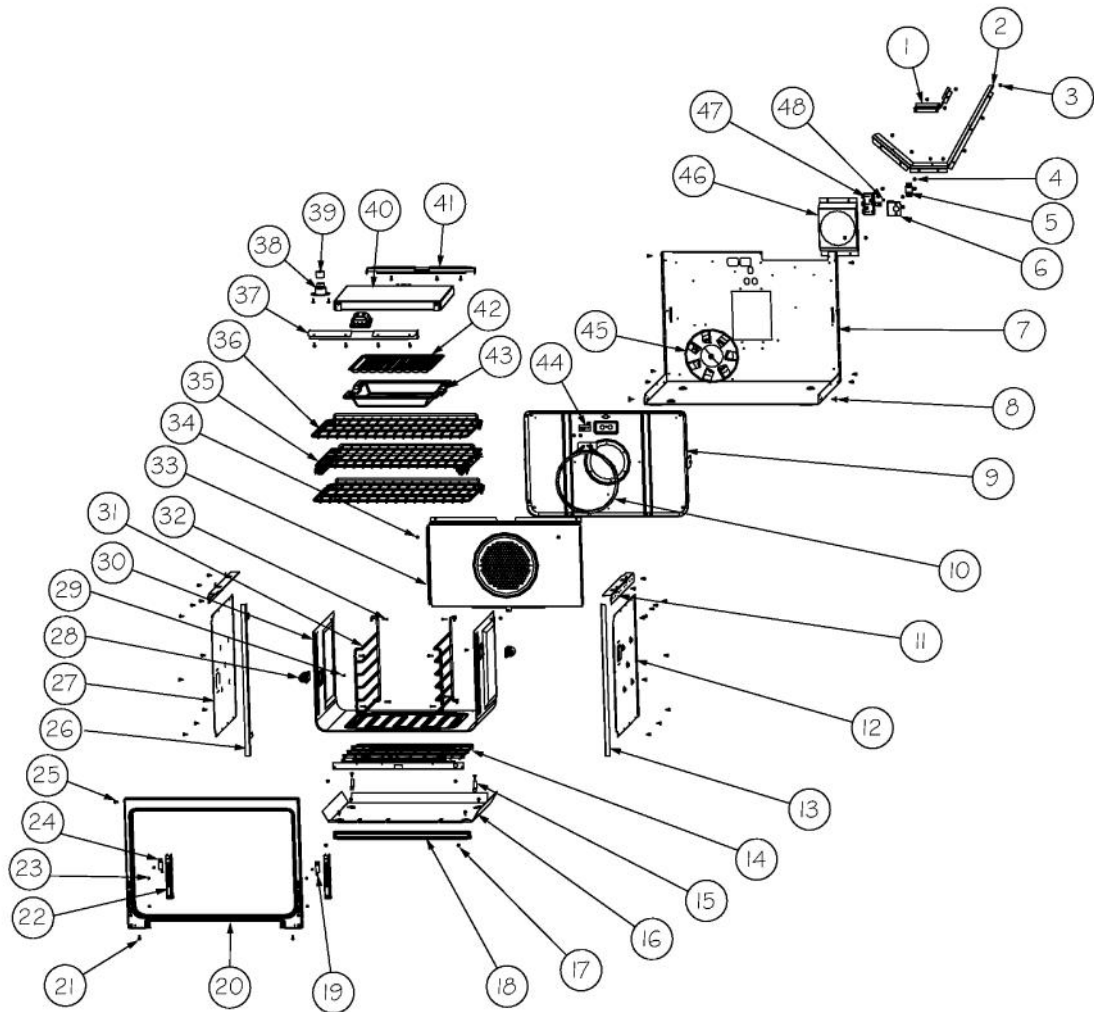
Ref #	Part Number	Qty.	Description
1	003225-000	4	ROTARY INDUCTION CONTROL
2	PD030114	4	INDUCTION CONTROL NUT
3	PJ030033	1	SELECTOR (10 POS)
4	PE050072	2	LENS OPENING (250 VOLT) BEFORE 7/20/10 (072010C00007885)
NI	021336-000	2	INDICATOR, LT, RED, CHROME BEZEL, LED ON OR AFTER 7/20/10 (072010C00007885)
5	PE050023	2	OVEN IND. LIGHT (LENS & BEZEL) BEFORE 7/20/10 (072010C00007885)
NI	021336-000	2	INDICATOR, LT, RED, CHROME BEZEL, LED (ON OR AFTER 7/20/10 - 072010C00007885) TO 7/13/11)
NI	015043-000	2	INDICATOR, LIGHT, BLUE LED (ON OR AFTER 7/14/11)
6	PB010304	6	KNOB BEZEL
7	PD020046	4	NO.8 X 1/2 SCREWS
8	007561-000	4	INDUCTION KNOB - SS
9	PD020044	4	NO.8-32 X 1/4 PH. TR. HD. M.S.
10	005271-000	1	RANGE SELECTOR KNOB-BRUSHED, SSS
11	007556-000	1	CONTROL PANEL, VISC530
12	PD020032	5	SRW-8(A)X3/8PH.WFR HD 7/16DIAXNICL
13	PD040004	2	GROMMET BUMPER
14	002945-000	1	FALSE DRIP TRAY HANDLE ASSY, 30 - SS
15	003719-000	1	OVEN LIGHT SWITCH, BLACK
16	PJ030035	1	THERMOSTAT
17	005270-000	1	RANGE THERMOSTAT KNOB-BRUSHED, SSS



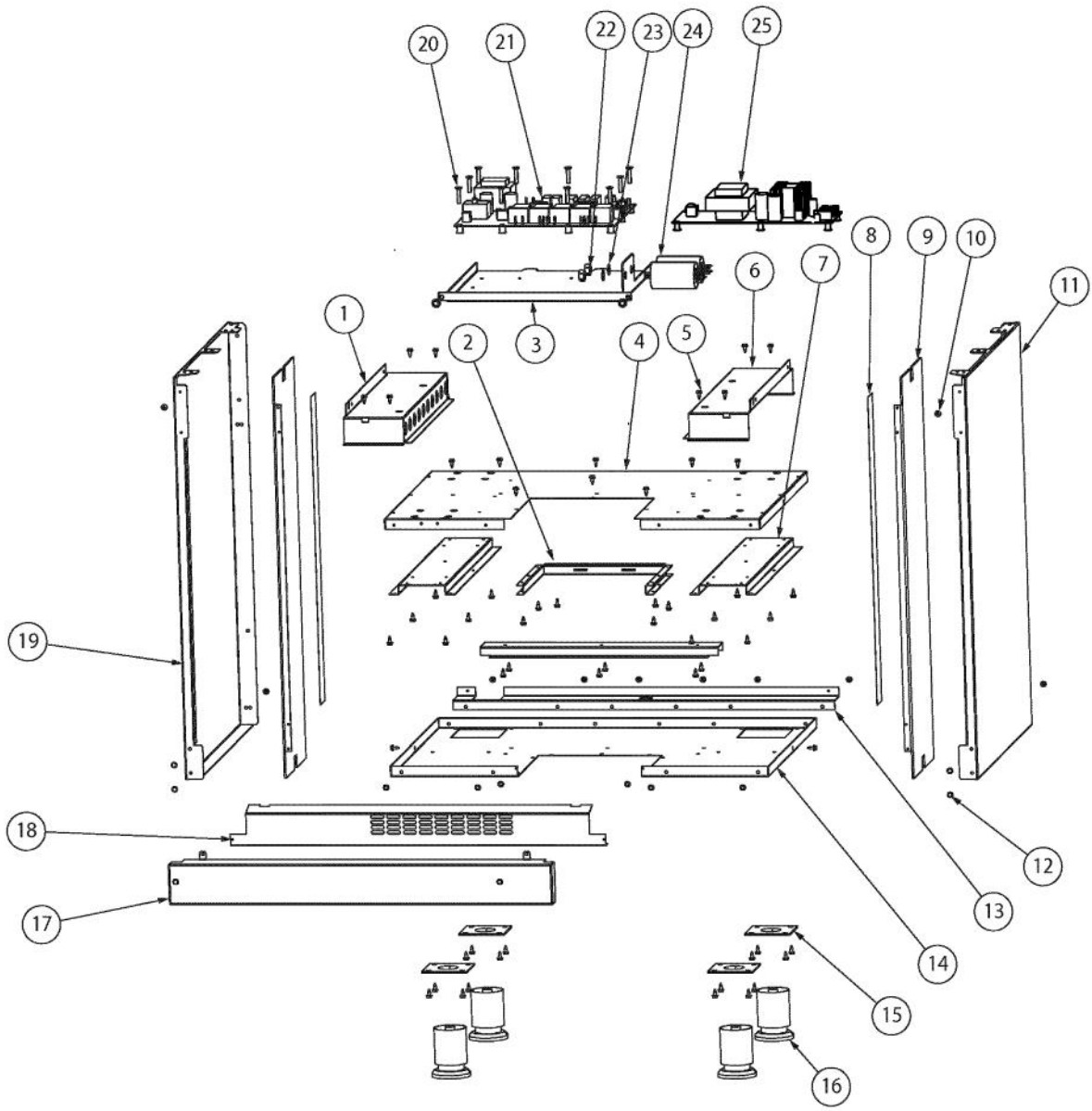
Ref #	Part Number	Qty.	Description
1	007560-000	1	COOKTOP, GLASS ASSY
2	003134-000	2	COIL, IND, 180MM
3	PD020032	20	SRW-8(A)X3/8PH.WFR HD 7/16DIAXNICL
4	007475-000	2	VISC GENERATOR MOUNT
5	PD020005	8	NO.8 X 1/2 PH.PN.HD.SMS.
6	003133-000	1	COOKTOP, GEN
7	008233-000	1	INDUCTION COOKING FAN ASSY
8	003860-000	19	NO.10-18 X .500 FASTNR,SCR,HXWH,STL,ZPLT
9	003801-000	6	SHOULDER SCREW, NO.10
10	002755-000	1	BURNER BOX SIDE, RH
11	003136-000	2	INDICATOR, IND, RED
12	007494-000	1	INDUC/CONV MOUNT
13	003154-044	1	CONV 1850 WATT
14	003715-000	12	CONVERTER STANDOFF
15	003154-043	1	CONV 3700/1400 WATT
16	002922-000	1	BURNER BOX BOTTOM
17	004577-000	1	DRIP, LEDGE
18	008186-000	1	FRONT SUPPORT
19	003481-000	1	BURNER BOX SIDE, LH
20	007550-000	1	SUPPORT, RNG, TOP REAR
21	007544-000	1	COOKTOP GENERATOR 3700/1400 WATT
22	007847-000	4	GENERATOR MOUNTING RAIL
23	008320-000	2	HEAT SINK COVER
24	003592-000	1	CASED CORE
25	007545-000	1	COIL, IND, 210MM
26	007508-000	1	COIL, IND, 145MM



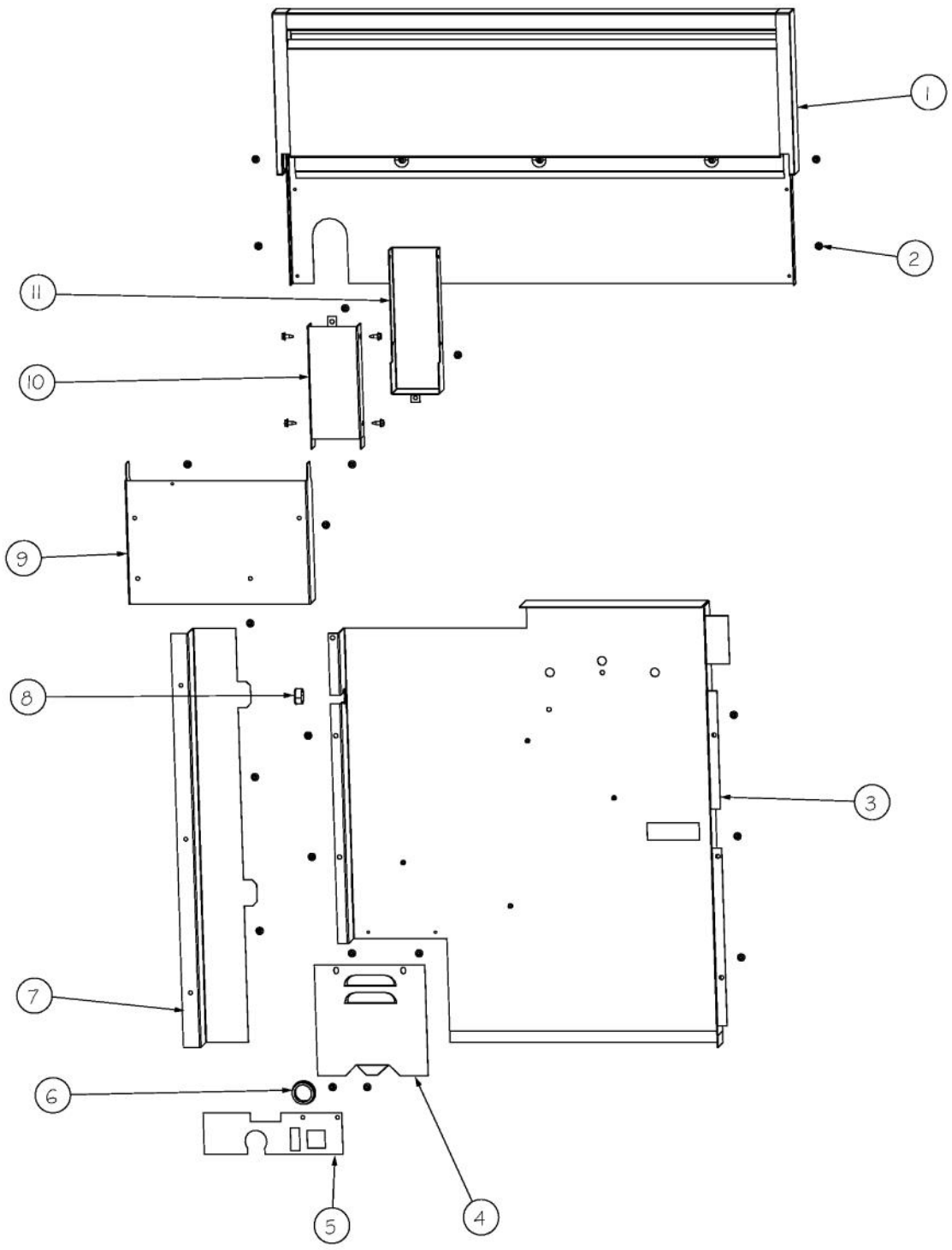
Ref #	Part Number	Qty.	Description
1	004285-000	1	INSULATION, FOIL-BACKED,4X5
2	003333-000	1	DUCT, FLUE
3	003860-000	36	NO.10-18 X .500 FASTNR,SCR,HXWH,STL,ZPLT
4	PE050210	1	DOOR LATCH
5	PB070321	1	LOWER LATCH INSULATION
6	PE050250	1	PREMIUM BLOWER WITH HES BEFORE 8/6/2013
6	018607-000	1	FAN,BLO, 220-240V 50/60HZ ASSY AFTER 8/6/13
7	004110-000	1	MOUNT,BLOWER
8	A2009659	1	BRACKET, FILLER, BLOWER
9	008215-000	2	SIDE INSULATION RETAINER
10	A20012649	1	DOOR SWITCH BRACKET
11	PE050208	1	DOOR SWITCH
12	PB070079	3	SILICONE EXTRUSION (DGSU)
13	002754-000	1	RANGE TOP BRACE, AIR CHANNEL
14	004016-000	1	PLATE,SVCE,RGLT
15	PD040152	1	SNAP BUSHING



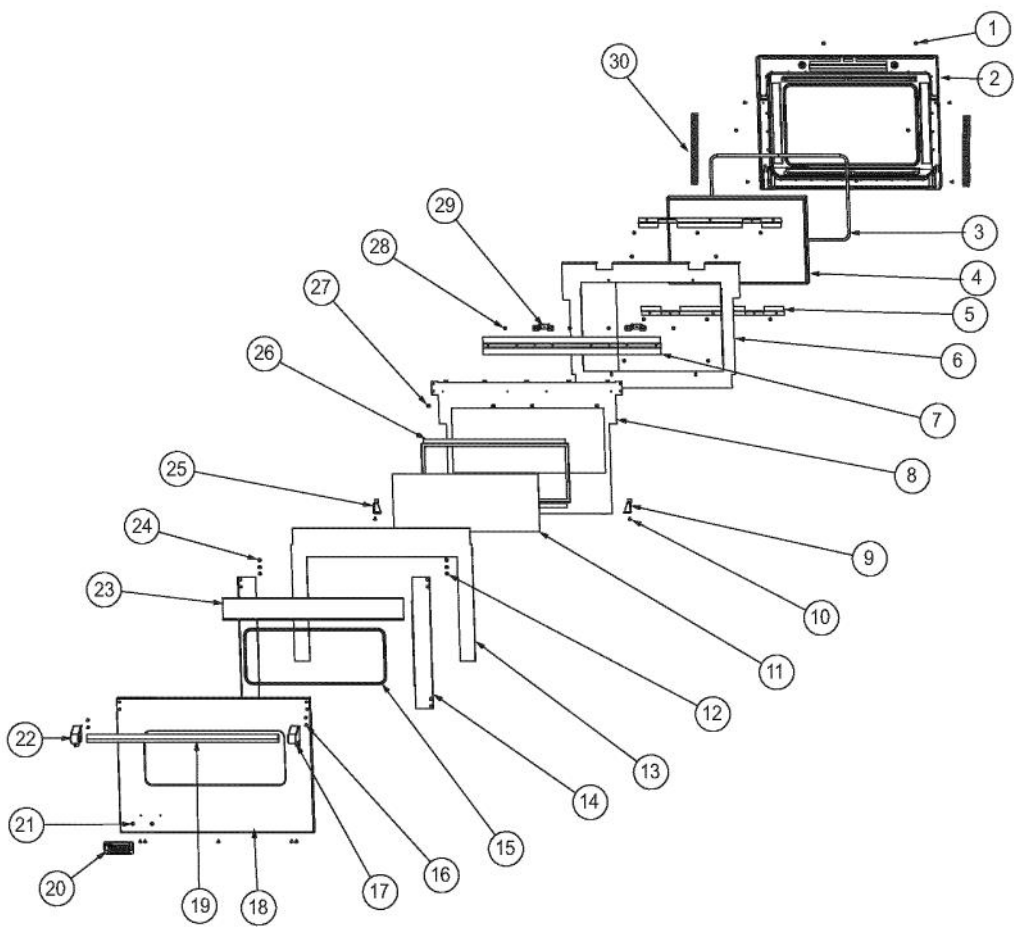
Ref #	Part Number	Qty.	Description
1	003356-000	1	DIVERTER, AIR
2	002941-000	1	BAFFLE, FAN, REAR
3	003860-000	52	NO.10-18 X .500 FASTNR,SCR,HXWH,STL,ZPLT
4	PD020014	4	10X3/4 PH TR HD SMS
5	A1002457	1	POWER CORD MOUNTING STRAP (VDSC)
6	A2002195	1	POWER CORD MOUNTING BRKT (VDSC)
7	003244-000	1	OVEN BOTTOM, BACK WRAP
8	PD020151	2	SHOULDER SCREW
9	H30014982	1	CAVITY BACK WELD ASSY 30
10	PJ010047	1	CONVECTION ELEMENT
11	A2009641	2	BRKT, TOP WRAPPER
12	A2009622	1	BRKT, TOP WRAPPER, RIGHT
13	003644-000	1	TRIM,FRONT,SIDE,STAINLESS
14	PJ010048	1	BAKE ELEMENT
15	A2009696	2	HOLDER, BAKE ELEMENT
16	A2009612	1	ELEMENT, MTG TRAY
17	PD020063	2	SCREW-NO.8(A) X 3/8PH WFR HD/BK OXID
18	E9109655	1	BAKE TRAY COVER
19	B21010915	1	HINGE CLIP ? RH
20	H30014980	1	FRONT FRAME WELD ASSY 30
21	PD020062	4	NO.8-32 X 3/8 PHMS TYPE 1
22	Q31679-000	2	RECEPTACLE, HINGE
23	PD020061	2	NO.8 X 3/4 FLAT HD TEK. SS.
24	B21010916	1	HINGE CLIP ? LH
25	003801-000	1	SHOULDER SCREW, NO.10
26	005038-000	1	TRIM,FR,SIDE,L
27	A20012650	1	BRKT, TOP WRAPPER LEFT
28	PE050238	2	120 VOLT SIDE HALOGEN LIGHT
29	PD020067	2	NO.6 X 3/8 PAN PHIL. TEK SS
30	E21014038	1	30 PREMIERE CAVITY WRAPPER
31	PB060104	2	RACK SUPPORT LH
32	PD020232	8	NO.8 X 3/4 PH PAN HEAD TEK SCREW (BLACK OXIDE)
33	G91013598	1	30 BAFFLE ASSEMBLY
34	PD020048	14	NO.10 X 1/2 TEK 410 SS SCREW
35	PB060108	1	SLIDING RACK
36	PB060107	2	30 OVEN RACK
37	B20014050	1	PREMIERE BROIL ELEMENT BRACKET FRONT
38	PM010014	1	SMOKE ELIMINATOR (VDSC)
39	PB020275	1	VENT TUBE
40	PJ010050	1	SEALED BROIL ELEMENT W/GLASS
41	B20014051	1	PREMIERE BROIL ELEMENT BRACKET REAR
42	E9107934	1	BROILER PAN INSERT
43	E9107933	1	BROILER PAN
44	PE050206	1	RTD THERMOSTAT PROBE
45	A21014019	1	CONVECTION FAN BLADE
NI	PE050203	1	CONVECTION MOTOR
46	A2009697	1	BRACKET, CONVECTION INSULATION
47	PE070147	1	TERMINAL BLOCK
48	PD020010	1	10 X 3/8 GREEN GROUNDING SCREW



Ref #	Part Number	Qty.	Description
1	003763-000	1	OVEN MODULE SUPPORT CHANNEL, LH
2	003054-000	1	BASE CENTER CUTOUT STIFFENER
3	003050-000	1	CONTROL BOARD MOUNTING PLATE BEFORE 7/20/10 (072010C00007885)
NI	015096-000	1	PLATE, MTG, EOC4 CONTROL BOARD ON OR AFTER 7/20/10 (072010C00007885)
4	003052-000	1	BASE TOP PLATE
5	003860-000	71	NO.10-18 X .500 FASTNR,SCR,HXWH,STL,ZPLT
6	003761-000	1	OVEN MODULE SUPPORT CHANNEL, RH
7	003053-000	2	BASE LEG SUPPORT CHANNEL
8	M0275166	2	TAPE-ALUM SL
9	002238-000	2	HEAT SINK-SIDE PANEL
10	003801-000	2	SHOULDER SCREW, NO.10
11	002905-000	1	SIDE PANEL, RH, SST
12	PD020032	4	SRW-8(A)X3/8PH.WFR HD 7/16DIAXNICL
13	003323-000	1	OVEN LEDGE, BACK
14	003051-000	1	BASE LOWER PLATE
15	PC030007	4	LEG PLATE - 3/4 THREADED HOLE
16	PC030031	4	ADJUSTABLE LEG
17	002910-000	1	KICKPLATE - STAINLESS
18	003330-000	1	ACCESS GRILL PANEL, LOWER
19	003588-000	1	SIDE PANEL, LH
20	PD020043	13	NO.6-32 X .750 PH. CTRSK T(F)-VGSO166
21	000621-000	1	SUB TO 002406-000 - CONTROL BOARD BEFORE 7/20/10 (072010C00007885)
21	014000-000	1	EOC4-CONTROL BOARD ON OR AFTER 7/20/10 (072010C00007885)
NI	021340-000	1	LINEAR POWER SUPPLY, SINGLE ON OR AFTER 7/20/10 (072010C00007885)
22	PD030172	2	M8 X 1.25MM NUT
23	PD040164	2	5/16 INTERNAL TOOTH LOCK WASHER TYPE A
24	PE050247	2	EBM FAN MOTOR CAPACITOR
25	021340-000	1	LINEAR POWER SUPPLY, SINGLE



Ref #	Part Number	Qty.	Description
1	003815-000	1	30 WIDE X 8 HIGH BACKGUARD ASSY
2	003860-000	25	NO.10-18 X .500 FASTNR,SCR,HXWH,STL,ZPLT
3	003272-000	1	COVER, REAR
4	A2002454	1	BACK COVER ACCESS DOOR
5	003702-000	1	TEST CONNECTOR MOUNTING PLATE
6	PD040152	1	SNAP BUSHING
7	003245-000	1	CHANNEL, WIRE, REAR
8	PD040005	1	SNAP BUSHING - 7/8
9	003681-000	1	DUCT, AIR
10	A20010102	1	FLUE, CENTER EXTENDED
11	A20010101	1	FLUE, OUTSIDE SHELL



Ref #	Part Number	Qty.	Description
1	PD020063	18	SCREW-NO.8(A) X 3/8PH WFR HD/BK OXID
2	015412-000	1	DOOR LINER SPOTWELD ASM
3	000594-000	1	BLACK FIBERGLASS ROPE 3/8
4	PE060094	1	30 WINDOW PACK
5	004153-000	2	DOOR GLASS HOLDER BRACKET
6	004152-000	1	DOOR LINER INSULATION RETAINER, 30
7	002732-000	1	DOOR SKIN MOUNTING BRACKET ASSY
8	002730-000	1	DOOR SKIN INSULATION RETAINER, BLACK
9	A20012640	1	HINGE SUPPORT RH
10	PD020032	7	SRW-8(A)X3/8PH.WFR HD 7/16DIAXNICL
11	PE060090	1	30 PROF. OUTER DOOR GLASS (NOT FIELD REPLACEABLE - MUST ORDER ITEM NO. 18)
12	PD020073	2	SRW NO.10 X 24 X 3/8 WAFER HD TYPE23
13	002727-000	1	DOOR SKIN INSULATION, 30
14	002726-000	2	DOOR SKIN SIDE BRACKET
15	PE060105	1	30 J-MOLD (CHROME) NOT FIELD REPLACEABLE (NOT FIELD REPLACEABLE - MUST ORDER ITEM NO. 18)
16	002736-000	4	NO.10-32 PAN HEAD PHILLIPS MACHINE SCREW
17	003012-000	1	DOOR HANDLE ENDCAP ASSY, RH (CHROME)
18	023251-000	1	SVC DOOR SKIN KIT, VDSC530, 530T, SS
18	023252-002	1	SRV DOOR SKIN KIT, VDSC530, 530T, BK
18	023252-003	1	SRV DOOR SKIN KIT, VDSC530, 530T, BT
18	023252-004	1	SRV DOOR SKIN KIT, VDSC530, 530T, SG
18	023252-005	1	SRV DOOR SKIN KIT, VDSC530, 530T, GG
18	023252-006	1	SRV DOOR SKIN KIT, VDSC530, 530T, WH
18	023252-008	1	SRV DOOR SKIN KIT, VDSC530, 530T, BU
18	023252-009	1	SRV DOOR SKIN KIT, VDSC530, 530T, LE
18	023252-010	1	SRV DOOR SKIN KIT, VDSC530, 530T, MJ
18	023252-012	1	SRV DOOR SKIN KIT, VDSC530, 530T, VB
18	023252-013	1	SRV DOOR SKIN KIT, VDSC530, 530T, CB
18	023252-015	1	SRV DOOR SKIN KIT, VDSC530, 530T, PL
18	023252-016	1	SRV DOOR SKIN KIT, VDSC530, 530T, CH
18	023252-017	1	SRV DOOR SKIN KIT, VDSC530, 530T, TP
18	023252-018	1	SRV DOOR SKIN KIT, VDSC530, 530T, CW
18	023252-019	1	SRV DOOR SKIN KIT, VDSC530, 530T, OG
18	023252-020	1	SRV DOOR SKIN KIT, VDSC530, 530T, GM
18	023252-021	1	SRV DOOR SKIN KIT, VDSC530, 530T, SA
18	023252-022	1	SRV DOOR SKIN KIT, VDSC530, 530T, SE
18	023252-023	1	SRV DOOR SKIN KIT, VDSC530, 530T, IB
18	023252-024	1	SRV DOOR SKIN KIT, VDSC530, 530T, AR
18	023252-025	1	SRV DOOR SKIN KIT, VDSC530, 530T, RR
18	023252-026	1	SRV DOOR SKIN KIT, VDSC530, 530T, PM
18	023252-027	1	SRV DOOR SKIN KIT, VDSC530, 530T, MS
19	002728-000	1	DOOR HANDLE - SS, 1.25 OD
20	PE010016	1	NAMEPLATE, LOGO, PRO
21	PD030006	1	CAPPED WASHER PAL NUT
22	003011-000	1	DOOR HANDLE ENDCAP ASSY, LH (CHROME)
23	002724-000	1	DOOR SKIN HEAT SINK, 30
24	004907-000	4	STEEL FINISHING PLUG, NICKEL PLTD 25/64 HOLE
25	A20012641	1	HINGE SUPPORT LH
26	L20014077	1	30 WINDOW HOLDER NOT FIELD REPLACEABLE (NOT FIELD REPLACEABLE - MUST ORDER ITEM NO. 18)
27	PD020033	4	SRW-NO.10-24X1/2T(23)PH.WFR HD (NKL)
28	PD030010	3	NO.10-24 KEPS NUT
29	A21014003	2	DOOR LINER MTG. BRKT.
30	002740-000	2	MANSFIELD HINGE, BLUE SPRING

*No Image
Available*

Ref #	Part Number	Qty.	Description
NI	004132-000	1	OVEN HARNESS BEFORE 7/20/10 (072010C00007885)
NI	021182-000	1	MAIN OVEN HARNESS ON OR AFTER 7/20/10 (072010C00007885)
NI	004133-000	1	CONTROL PANEL HARNESS BEFORE 7/20/10 (072010C00007885)
NI	020019-000	1	HARNESS, WRG, CONTROL ON OR AFTER 7/20/10 (072010C00007885)
NI	005292-000	1	MODEL 5 HEADER BEFORE 7/20/10 (072010C00007885)
NI	023022-000	1	MODEL 17 HEADER ON OR AFTER 7/20/10 (072010C00007885)
NI	000915-000	1	LIMIT JUMPER BEFORE 7/20/10 (072010C00007885)
NI	PE070734	1	SINGLE OVEN HEADER BEFORE 7/20/10 (072010C00007885)