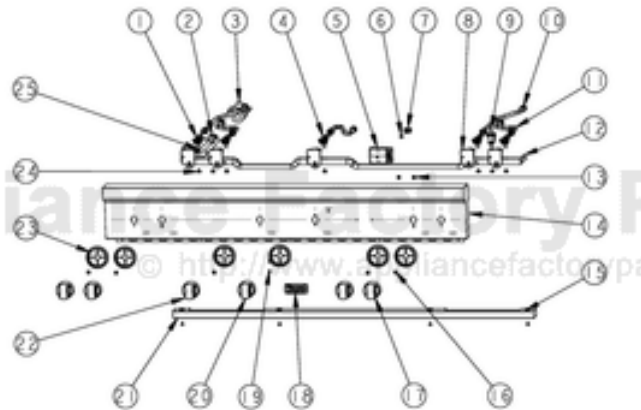


This Owner's Manual is provided and hosted by [Appliance Factory Parts](http://ApplianceFactoryParts.com).



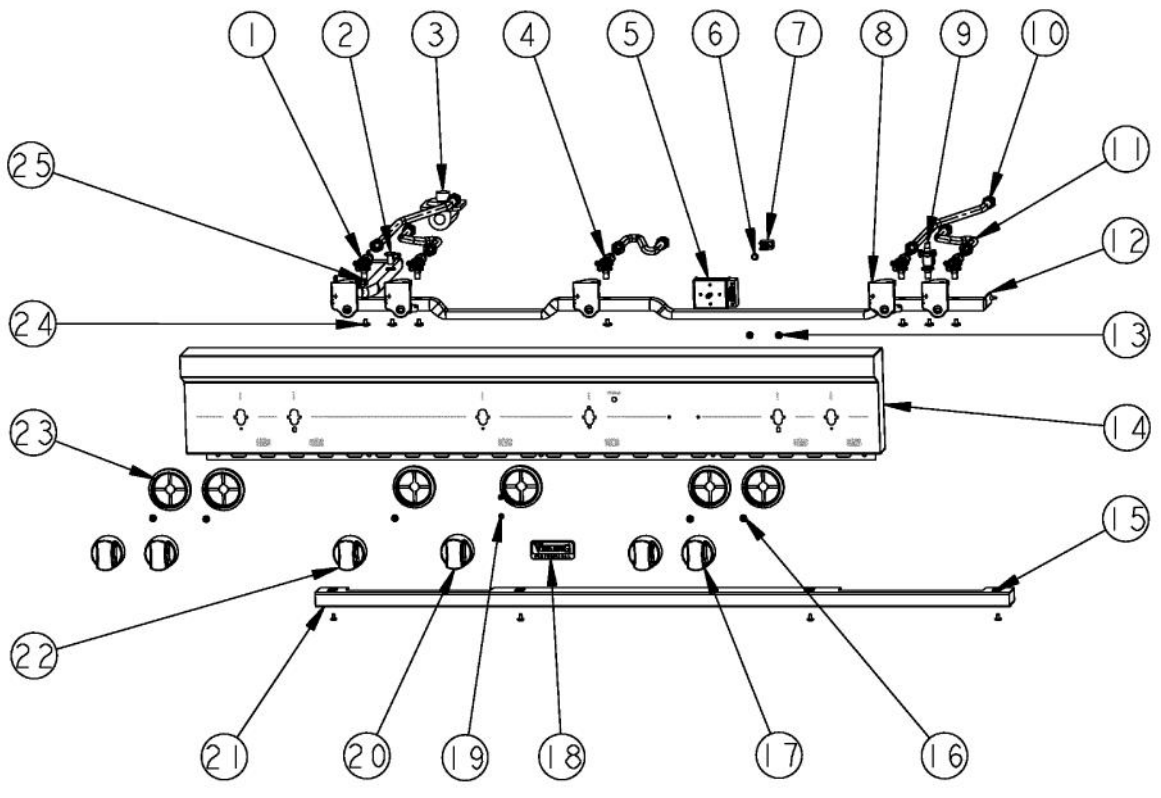
VIKING VGRT5484GQ Owner's Manual

[Shop genuine replacement parts for VIKING VGRT5484GQ](#)

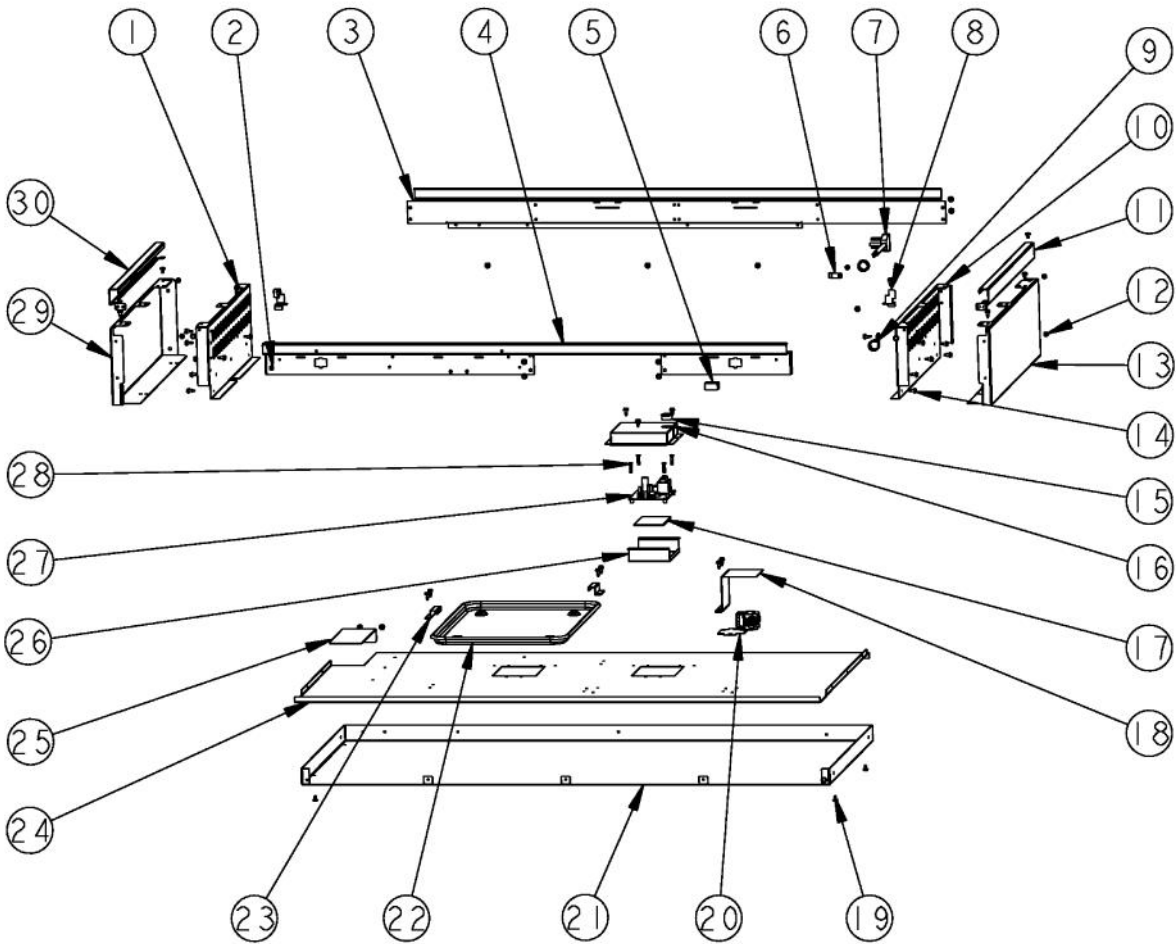


[Find Your VIKING Range Hoods Parts - Select From 411 Models](#)

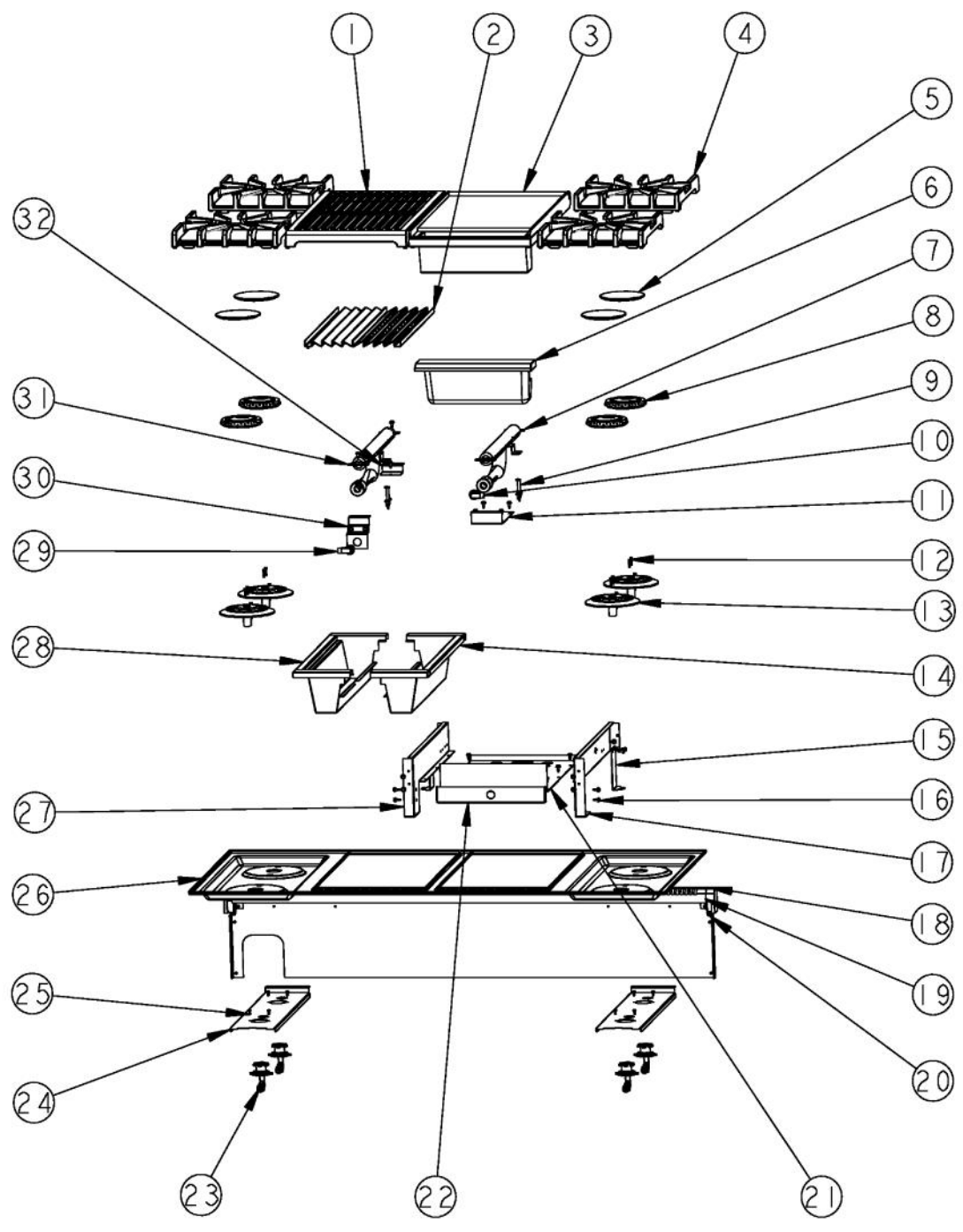
----- Manual continues below -----



Ref #	Part Number	Qty.	Description
1	006015-000	4	VALVE, BRS, SEALED TOP - ISPHORDING
2	002884-000	1	MANIFOLD PLUG
3	PA070001	1	PRESSURE REGULATOR (NAT.)
4	013583-000	1	VALVE, GRL, ASM, BRS, ISPHORDING
5	012235-000	1	ELECTRONIC THERMOSTAT - 2 POS. W/O LEADS
6	PE050023	1	OVEN IND. LIGHT (LENS & BEZEL)
7	PE050072	1	LENS OPENING (250 VOLT)
8	PA020058	5	IRIS SINGLE SPARK MODULE
9	PB030007	1	SHUT OFF VALVE
10	005815-000	2	BURNER MODULE ASSY (15K)
11	PB020192	1	10 FLEX TUBING W/CONNECTORS
12	008709-000	1	MANIFOLD, GAS, VDSC548-4GQ
13	PD030006	2	CAPPED WASHER PAL NUT
14	014330-000	1	CONTROL, PANEL, ASM, VGRT548-4GQ
15	PD020032	6	SRW-8(A)X3/8PH.WFR HD 7/16DIAXNICL
16	PD020046	5	NO.8 X 1/2 SCREWS
17	005269-000	4	RANGE TOP BURNER KNOB-BRUSHED, SSS
18	PE010142	1	3 LOGO XBKXXCHROME
19	PD020062	2	NO.8-32 X 3/8 PHMS TYPE 1
20	006570-000	1	KNOB, GRDL(LH OVEN), ASM, PVD, NO.3, SSS
21	011717-000	1	TRIM ASM
22	006574-000	1	KNOB, GRL, ASM, PVD, NO.3, SSS
23	PB010304	6	KNOB BEZEL
24	PD010012	7	VALVE BOLT 1/4-20 UNC-2B 5/16 M.S.
25	003860-000	3	NO.10-18 X .500 FASTNR,SCR,HXWH,STL,ZPLT
NI	015357-000	1	IGNITOR, W/WIRE
NI	000647-000	2	IRIS IGNITOR WIRE, FRONT BURNER
NI	006766-000	2	IRIS IGNITOR WIRE, BACK BURNER



Ref #	Part Number	Qty.	Description
1	011078-000	1	PANEL, RNG, GRIDDLE, LF
2	PD020010	1	10 X 3/8 GREEN GROUNDING SCREW
3	008464-000	1	BRNR BOX,REAR,FLAT,SUPPORT,VDSC5484GQ 48
4	008705-000	1	SUPPOT, RNG, TOP, FR, VDSC548-4GQ
5	PE070071	1	DISCONNECT BLOCK XALX 770027-1
6	PD030148	1	CLAMP CABLE ALUMINUM .500 DIA. (AL-8 CLAMP)
7	PE070128	1	SUPPLY CORD (VGRT/SC/SS/RC)
8	004021-000	2	SUPPORT,TRIM,SIDE
9	PD030109	1	INSULATED CLAMP
10	011077-000	1	SHIELD, HEAT, GRIDDLE, RH
11	002920-000	1	SIDE TRIM, RH - STAINLESS
12	PD020055	4	NO.10 X 1/2 PAN PHIL. TEK. SS
13	008100-000	1	PANEL, RH RANGETOP
14	003860-000	46	NO.10-18 X .500 FASTNR,SCR,HXWH,STL,ZPLT
15	PD040005	1	SNAP BUSHING - 7/8
16	009267-000	1	COVER, FLAT,DSI, RAISED, 6G
17	PB070191	1	INSULATION PAD
18	009402-000	1	SOLENOID HEAT SHIELD COVER
19	PD020032	13	SRW-8(A)X3/8PH.WFR HD 7/16DIAXNICL
20	009111-000	1	VALVE, SOL, SINGLE
21	014324-000	1	RANGETOP, PANEL, BTM, VGRT548
22	PB080061	1	GREASE PAN
23	008286-000	2	BRACKET,DRIP,PAN,CUSTOM,Q-MODELS
24	006240-000	1	BURNER BOX BOTTOM,FLAT,VDSC548
25	007793-000	1	PLATE, SVCE,FLAT,REGULATOR,VDSC548
26	014306-000	1	BRACKET,SUPT,BOT,DSI BOARD,VGRT536-4G
27	PA020056	1	TYTRONICS DSI MODULE (BEFORE 01/19/11)
27	023651-000	1	DSI120 LONG PURGE (ON OR AFTER 01/19/11)
28	PD020043	4	NO.6-32 X .750 PH. CTRSK T(F)-VGSO166
29	008101-000	1	PANEL, LH, RANGETOP
30	003649-000	1	SIDE TRIM, LH - STAINLESS



Ref #	Part Number	Qty.	Description
1	010168-000	1	CUSTOM RANGE GRILL GRATE
2	E9101130BK	2	GRILL SMOKE GENERATOR
3	012291-000	1	GRIDDLE ASM, CUSTOM RANGES
4	007323-000	4	BURNER GRATE
5	PA080083	4	D BURNER CAP XMATTE BLACKX
6	012929-000	1	TROUGH, GRS, ASM
7	013888-000	1	GRIDDLE, BURNER, ASM, NAT, W/IGNITOR BRACKET
8	006706-000	4	B6 REV SEALED BURNER
9	PA020028	2	SPARK IGNITER
10	PB040190	1	90 DEGREE ORIFICE FITTING NO.50 NAT
11	006785-000	1	GRIDDLE, BOX, VENTURI, COVER
12	009197-000	8	NO.6-32 X 5/8 18-8 SS NC SOC CAP
13	003322-041	4	SEALED BURNER BASE, PAINTED FINISH
14	013593-000	1	PAN, DRIP, ASM, RIGHT
15	010649-000	2	FOOT, GRIDDLE BOX , VG536-4G
16	003860-000	35	NO.10-18 X .500 FASTNR,SCR,HXWH,STL,ZPLT
17	009097-000	1	RIGHT GRIDDLE SUPPORT, 36
18	008831-000	1	ISLAND TRIM, ASM, 48 CUSTOM
19	PD020055	4	NO.10 X 1/2 PAN PHIL. TEK. SS
20	PD020032	1	SRW-8(A)X3/8PH.WFR HD 7/16DIAXNICL
21	013953-000	1	GRIDDLE, BOX, BOTTOM, CUSTOM G RANGES
22	006783-000	1	GRIDDLE BRKT, ORIFICE, CUSTOM RANGES
23	001394-042	4	15000 BTU NAT JETHOLDER
24	002923-000	2	BURNER MODULE SUPPORT
25	PD020056	8	NO.10-24 X 1/2 PH.TR. M.S. SS
26	E9109803BK	1	48 SEALED COOKTOP 4BGQ XBKX
27	009096-000	1	LEFT GRIDDLE SUPPORT, 36
28	013595-000	1	PAN, DRIP, ASM, LEFT
29	008739-000	1	GRIDDLE ORIFICE FITTING, NAT.
30	007776-000	1	MOUNT, GRILL, BURNER, FRONT
31	007878-000	1	BURNER, GRIL, ASM
32	008636-000	1	BRACKET, BURNER, GRILL, REAR
33	PB020192	1	10 FLEX TUBING W/CONNECTORS