

This Owner's Manual is provided and hosted by [Appliance Factory Parts](#).



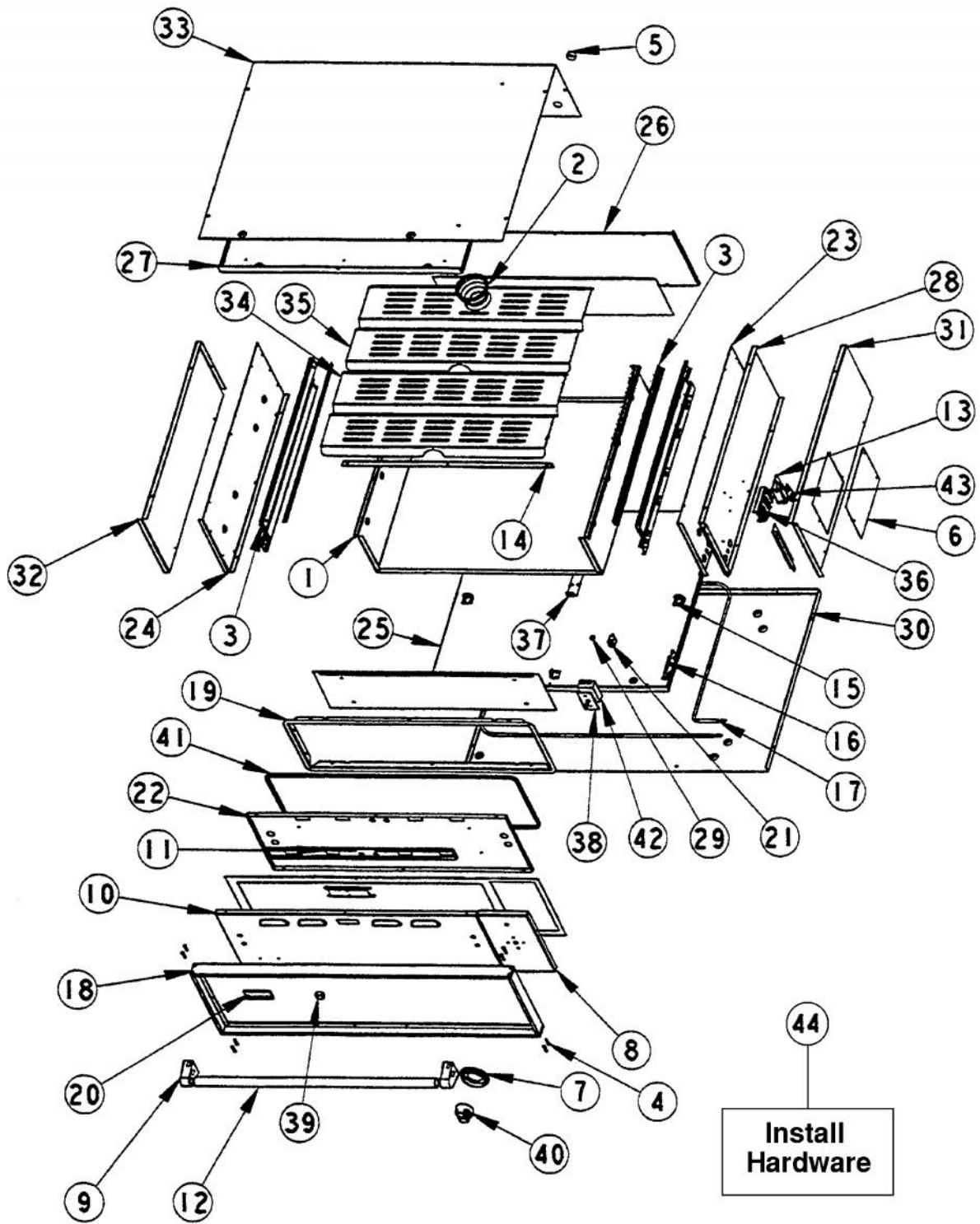
VIKING VEWD102T Owner's Manual

[Shop genuine replacement parts for VIKING VEWD102T](#)



[Find Your VIKING Small Appliance Parts - Select From 19 Models](#)

----- Manual continues below -----



| Ref # | Part Number | Qty. | Description |
|-------|--------------|------|-------------------------------------|
| 1 | G3004143 | | WARMING DRAWER WELD ASSY - (30) |
| 2 | PA030005 | | 6OZ. STAINLESS STEEL BOWL (6960) |
| 3 | PC020022 | | WARMING DRAWER SLIDES |
| 4 | PD020150 | | NO.6 X 1/2 PH. CT. SK. SMS. ``SS`` |
| 5 | PD040005 | | SNAP BUSHING - 7/8 |
| 6 | B1004135 | | ACCESS PLATE (VEWDT) |
| 7 | PB010171 | | BEZEL - SS |
| | PB010172 | | BEZEL NEW BR REPL PB010107 |
| 8 | B9204178 | | CTRL PAN)SLK SCR) XSSX (VEWD102) |
| | C9204178FG | | CTRL PAN (SLK SCR) XFGX (VEWD102) |
| | C9204178GG | | CTRL PAN (SLK SCR) XGGX (VEWD102) |
| | C9204178VB | | CTRL PAN (SLK SCR) XVBX (VEWD102) |
| NI | B2004867 | | OD CTRL PNL RAIN GUARD (VEWDT) |
| 9 | PE030001 | | BRACKET, DOOR, HANDLE |
| | PE030001PVD | | END CAP DOOR HANDLE XBR |
| 10 | B9204172 | | O/S DOOR PANEL XSLK SCREENXVEWD102 |
| | B9204172FG | | O/S DOOR PNL XSLK SCREENX(VEWD102T) |
| | B9204172GG | | O/S DOOR PNL XSLK SCREENX(VEWD102T) |
| | B9204172VB | | O/S DOOR PNL XSLK SCREENX(VEWD102T) |
| 11 | G3004195 | | DOOR SLIDE ASSY (VEWD102/162) |
| 12 | PE030062 | | WARMING DRAWER HANDLE SS VEWD102 |
| | F0005008 | | WARMING DRAWER HANDLE XBRX VEWD102 |
| 13 | B2002195 | | POWER CORD MOUNTING BRKT (VEWDT) |
| 14 | B2004126 | | DRAWER STOP 30 |
| NI | G3207303FG | | 30 DOOR ASSYXFGX(VEWD102T) |
| | G3207303FGBR | | 30 DOOR ASSYXFGXBRX(VEWD102T) |
| | G3207303GG | | 30 DOOR ASSYXGGX (VEWD102T) |
| | G3207303GGBR | | 30 DOOR ASSYXGGXBRX(VEWD102T) |
| | G3207303SS | | 30 DOOR ASSY XSSX (VEWD102T) |
| | G3207303SSBR | | 30 DOOR ASSY XSSXBRX (VEWD102T) |
| | G3207303VB | | 30 DOOR ASSYXVBX (VEWD102T) |
| | G3207303VBBR | | 30 DOOR ASSYXVBXBRX (VEWD102T) |
| 15 | B2004147 | | ELEMENT BRACKET (VEWD) |
| 16 | B2004141 | | BRACKET |
| 17 | PJ010009 | | ELEMENT - 30 (VEWD) |
| 18 | G3104139 | | FRONT FRAME ASSY (VEWD102) |
| 19 | B2004179 | | GASKET FRAME (VEWD102) |
| 20 | PE010142 | | 3 LOGO XBKXXCHROME |
| | PE010143 | | 3 LOGO BK/BR |
| 21 | PE050024 | | OVEN IND. LIGHT (LIGHT HOUSING) |
| 22 | B2004177 | | INSIDE DOOR PANEL - 30 (VEWD) |
| 23 | B2004151 | | INSIDE PANEL RH (VEWD) |
| 24 | B2004152 | | INSIDE PANEL LH (VEWD) |
| 25 | B2004174 | | BOTTOM INSIDE PANEL - 30 (VEWD) |
| 26 | B2004176 | | REAR INSIDE PANEL - 30 (VEWD) |
| 27 | B2004175 | | TOP INSIDE PANEL - 30 |
| 28 | B2004160 | | INSULATION PANEL (VEWDT) |
| 29 | PE050023 | | OVEN IND. LIGHT (LENS & BEZEL) |
| 30 | B2004169 | | OUTER BOTTOM PANEL 30 (VEWD102T) |
| 31 | B2004157 | | OUTER SIDE PANEL RH (VEWDT) |
| 32 | B2004158 | | OUTER SIDE PANEL LH (VEWDT) |
| 33 | B2004171 | | 30 OUTER TOP PANEL (VEWDT) |
| 34 | B2004131 | | FRONT RACK - 30 (VEWD) |
| 35 | B2004132 | | REAR RACK - 30 (VEWD) |
| 36 | PE070147 | | TERMINAL BLOCK |
| 37 | B2004148 | | THERMAL BULB BRKT (VEWD) |
| 38 | B1004146 | | THERMOSTAT SPACER (VEWD) |
| 39 | PA010072 | | MOISTURE SELECTOR KNOB XBKX (VEWD) |
| 40 | PB010168 | | T/STAT KB BK REPL PW100008BK |
| 41 | PB070072 | | WARMING DRAWER GASKET 6`UNIT |

| Ref # | Part Number | Qty. | Description |
|-------|-------------|------|---------------------------------------|
| 41 | PB070072 | | WARMING DRAWER GASKET 6`/UNIT |
| 42 | PB010167 | | THERMOSTAT |
| 43 | A1002457 | | POWER CORD MOUNTING STRAP (VDSC) |
| NI | G4004149 | | WIRE HARNESS (VEWD) |
| NI | G4004150 | | SUB TO PE070377 - WIRE HARNESS (VEWD) |
| NI | G4004197 | | WIRE HARNESS (VEWD) |
| NI | G4004198 | | WIRE HARNESS (VEWD) |
| NI | G4004199 | | WIRE HARNESS (VEWD) |
| NI | B1002457 | | STRAIN RELEIF (VEWDT) |
| NI | PB070034 | | INSULATION-TRS-10 1 X 20 X 3` |
| NI | PD950012 | 1 | STRIKE PANEL ACCESS |
| NI | PD950013 | 1 | LATCH PANEL ACCESS |