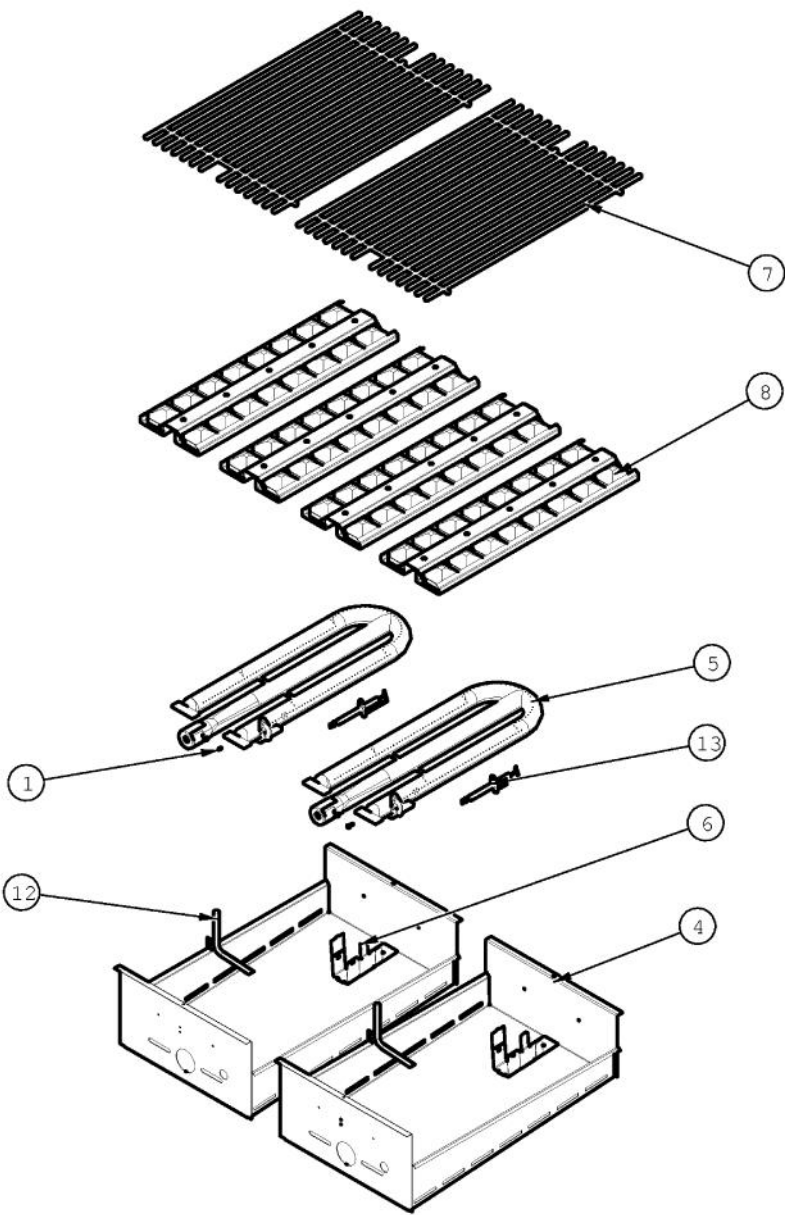
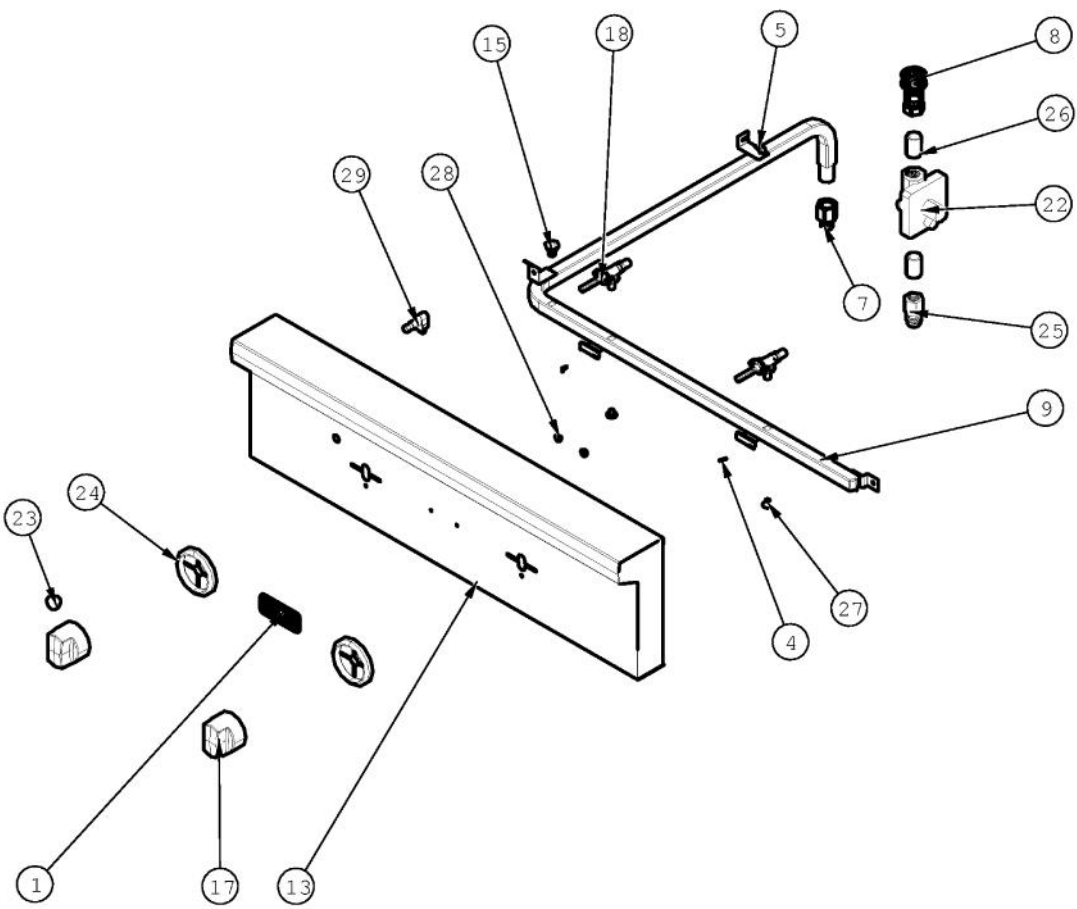


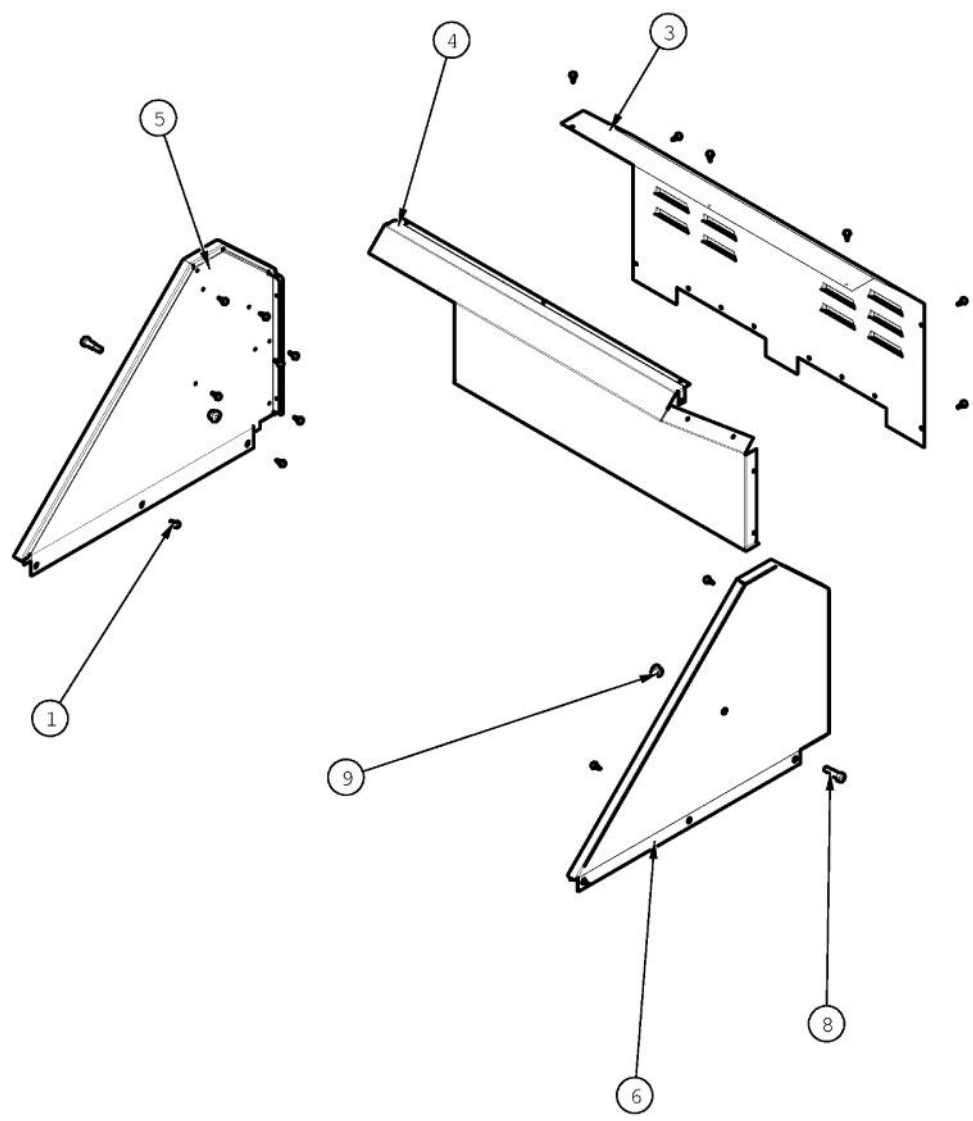
Ref #	Part Number	Qty.	Description
1	002671-000	2	RUBBER DOOR BUMPER
2	020055-000	17	SCR, DR, HXWH, 410SS, NPLT, 10-18 X 1/2
3	029459-000	2	PANEL, LWR SIDE
4	029460-000	2	FRAME, GRL, TOP
5	031849-000	1	BRACKET, BACK SUPPORT
6	033540-000	2	BRACKET, MTG SUPPORT, IGN ASM, 9V
7	035606-000	2	FLUE DIVERTER, 30
8	035911-000	1	SUPPORT, FRONT
9	035914-000	1	HEAT SHIELD, FRONT
10	036024-000	2	SUPPORT, TRAY, BRIQUETTE, 30
11	PD020166	2	NO.10 X 3/4 PAN PHIL. TEK. XSSX
12	PD950013	2	LATCH PANEL ACCESS
13	PM010049	1	SPARK MODULE BATTERY PHASE II
14	PA020036	1	SPARK MODULE



Ref #	Part Number	Qty.	Description
1	004706-000	2	MACHINE SCREW, 6-32 X 3/8, PAN HD, PHILLIPS
4	029461-000	1	BOX, U BURNER, 30
5	029479-000	2	U-BURNER, BQ ASM
6	032239-000	1	BRACKET, REAR GRILL BURNER
7	032287-000	2	GRILL, CKNG, GRATE, PORC
8	032370-000	4	TRAY, CRMC, BRIQUETTE, ASM
12	PB020114	2	FLASH TUBE (VGBQ3002T)
13	PB040288	2	SMOKER BURNER IGNITER

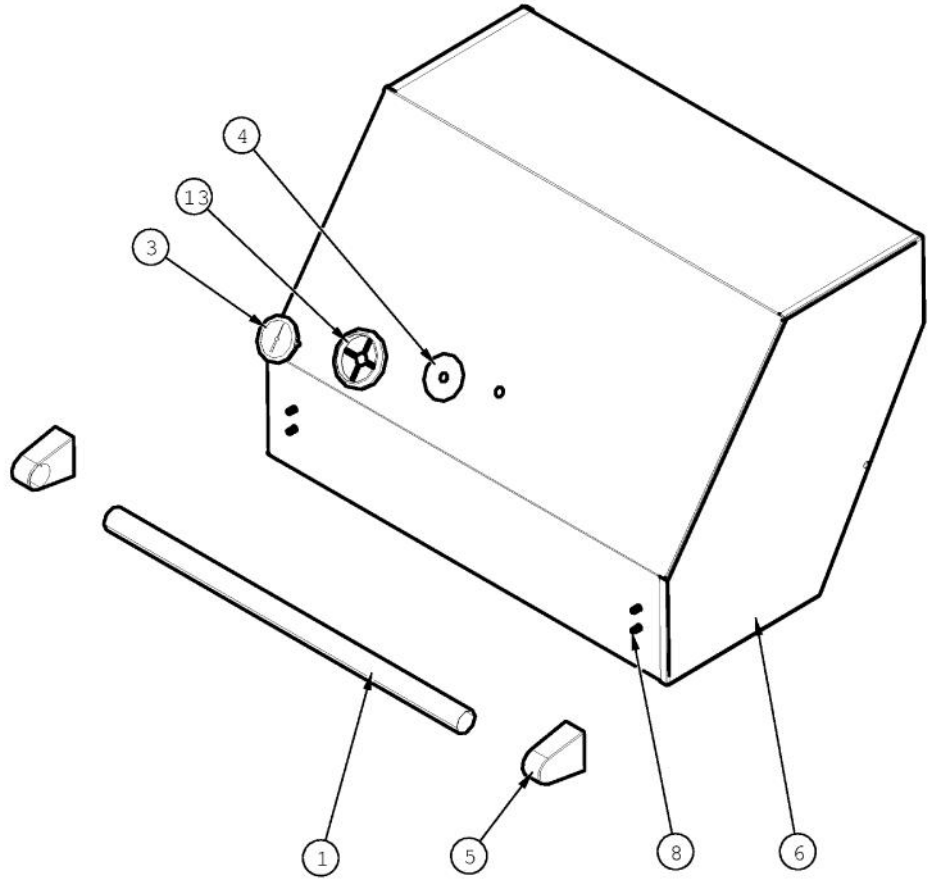


Ref #	Part Number	Qty.	Description
1	015009-000	1	OUTDOOR LOGO - 3 CHROME
4	020041-000	2	SCR, DR, PH, PNH, 410 SS, NPLT, 6-20 X 3/8
5	020055-000	5	SCR, DR, HXWH, 410SS, NPLT, 10-18 X 1/2
7	PB040146	1	1/2 X 3/8 FLARE ADAPTER (VGBQ)
8	023652-000		COUPLER, ASM
9	029468-000	1	MANIFOLD, BQ13002, NAT ASM
13	032514-2386	1	PANEL, CNTRL WELD W/GRAPHICS, BQ13002
15	002884-000	1	MANIFOLD PLUG
17	003561-000	2	OUTDOOR GRILL KNOB
18	014953-000	2	VALVE, GAS, ASM, U BNR - LP
18	014952-000	2	VALVE, GAS, ASM, U BNR
22	PA070005	1	PRESSURE REG.(LP) RV47L-77-10.0
22	PA070006	1	PRESSURE REGULATOR - NATURAL
23	PB010163	1	OVEN LIGHT SWITCH KNOB BK
24	PB010304	2	KNOB BEZEL
25	PB040235	1	1/2NPT TO 3/8 FLARE COUPLING
26	PB040046	2	1/2 CLOSE NIPPLE (VGSO166)
27	PD010012	3	VALVE BOLT 1/4-20 UNC-2B 5/16 M.S.
28	PD030006	2	CAPPED WASHER PAL NUT
29	PE050063	1	SPARKER SWITCH
NI	PB020227	1	HIGH PRESSURE LP HOSE
NI	PA010138	1	CYLINDER CONNECTION
NI	PA070007	1	LP TANK REGULATOR (VGBQ)

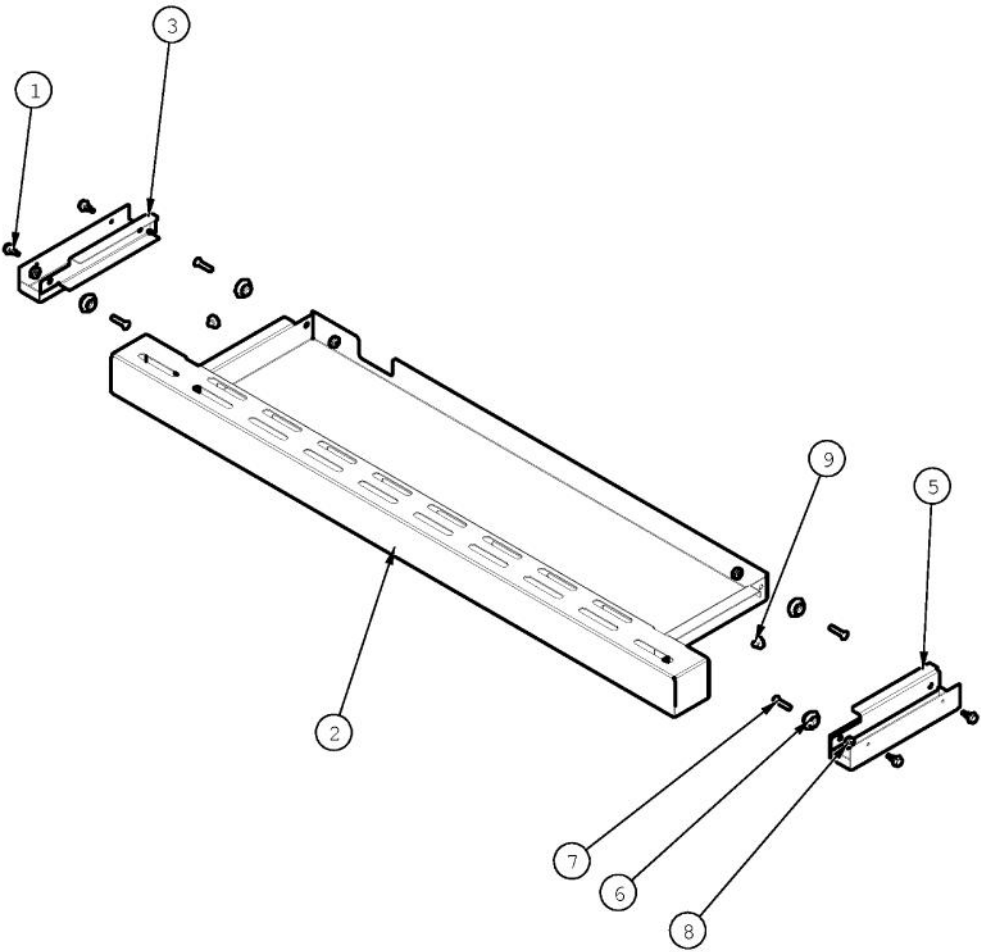


Ref #	Part Number	Qty.	Description
1	020055-000	31	SCR, DR, HXWH, 410SS, NPLT, 10-18 X 1/2
3	029462-000	1	PANEL, REAR BQ
4	032770-000	1	BACKPLATE, INT, W/RTSR, VGBQ13002
5	032841-000	1	WINDSHIELD ASM, BQ W/O RTSR, LH
6	032947-000	1	WINDSHIELD ASM, BQ W/O RTSR, RH
8	034607-000	2	FASTENER, BOLT, 5/16 - 1-1/2
9	PD030063	2	10-C05-HC 5/16-18 FLANGE NUT





Ref #	Part Number	Qty.	Description
1	019277-000	1	DOOR HANDLE, 24
3	020659-000	1	GAUGE, BMTL, TEMPERATURE
4	026724-000	1	SPACER, WSHR
5	026965-000	2	END CAP, ASM, DOOR HANDLE
6	035864-000	1	HOOD, BQ, 30 ASM
8	035647-000	4	FASTENER, BOLT, HXH, SST
13	PB010304	1	KNOB BEZEL



Ref #	Part Number	Qty.	Description
1	020055-000	4	SCR, DR, HXWH, 410SS, NPLT, 10-18 X 1/2
2	031548-000	1	DRIP TRAY ASM, BQ, 30
3	031555-000	1	DRIP TRAY GUIDE, LH
5	031554-000	1	DRIP TRAY GUIDE, RH
6	PC020025	2	DRIP TRAY WHEEL
7	PD020082	4	10 X 24 COUNTERSUNK S.S. SCREW
8	PD030044	4	10-24 KEPS NUT SS
9	PD040004	2	GROMMET BUMPER

*No Image  
Available*

Ref #	Part Number	Qty.	Description
NI	036446-000	2	WIRE ASM, GROUND 7.5
NI	G4006377	1	WIRE ASSY (VGBQ-T SERIES) 15
NI	G4006379	1	WIRE ASSY (VGBQ-T SERIES) 25
NI	G4006380	2	WIRE ASSY (VGBQ-T SERIES) 15
NI	036452-000	1	WIRE ASM, IGNITER, 21