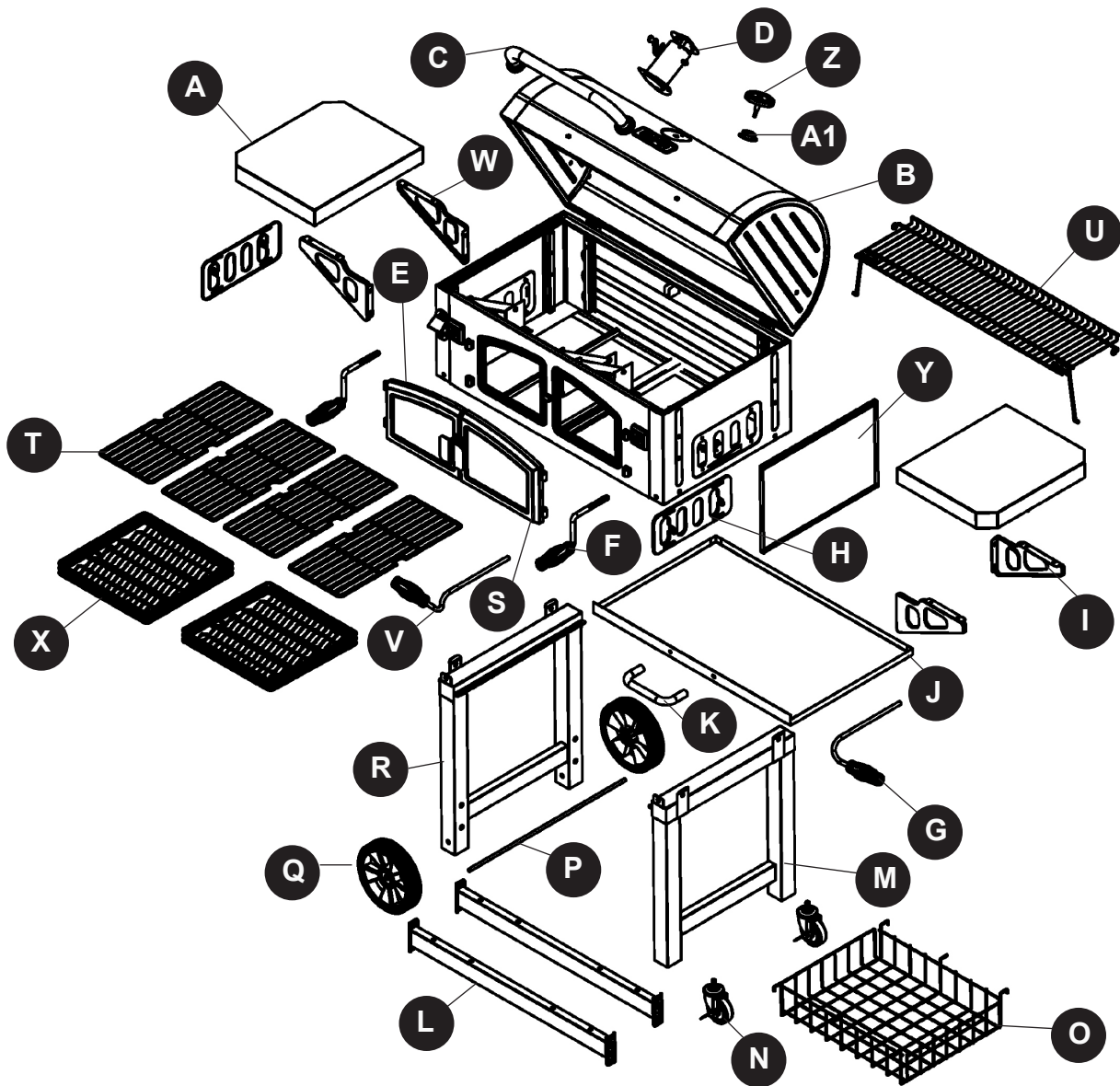


# PACKAGE CONTENTS

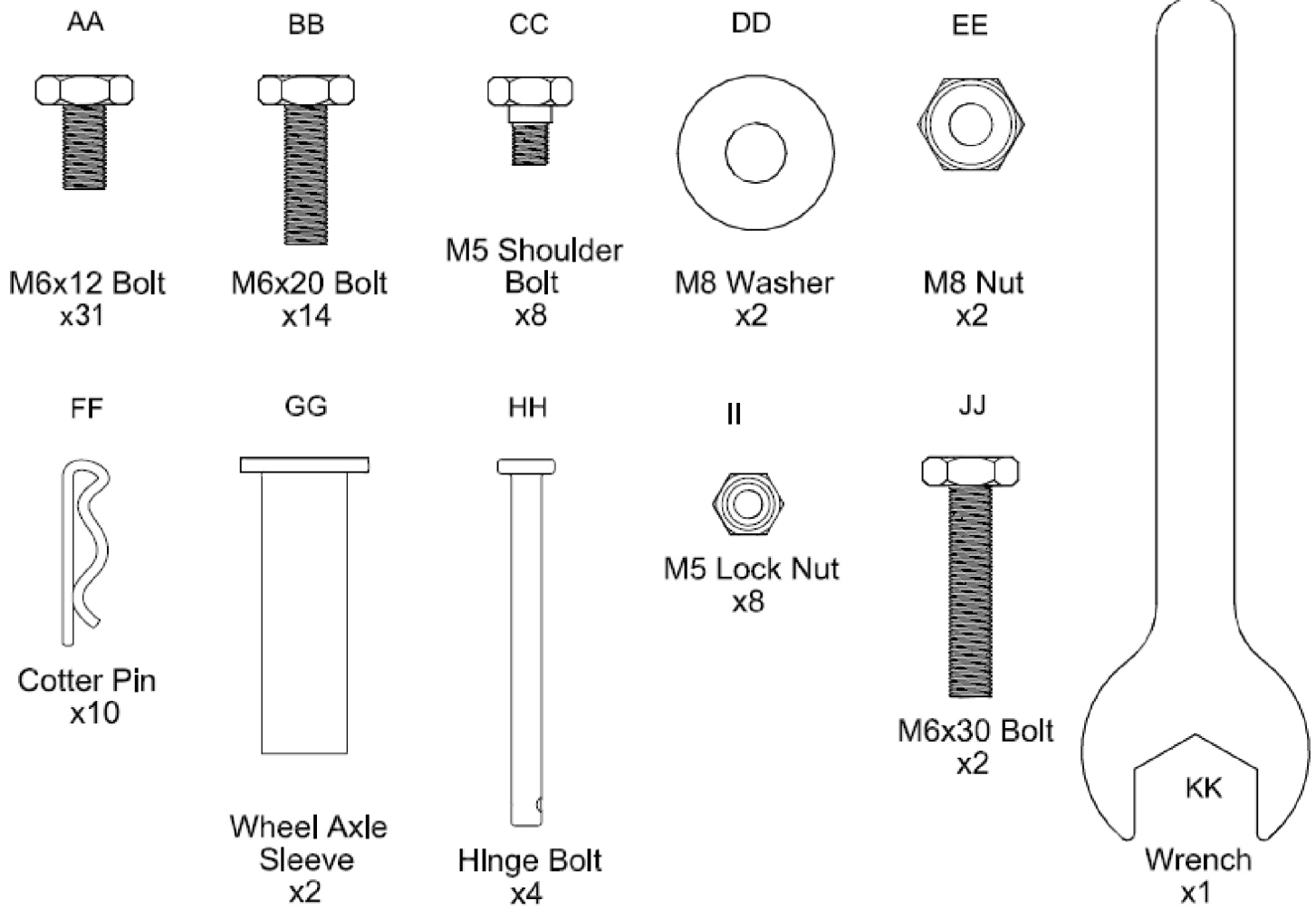


PART	DESCRIPTION	QUANTITY
A	Side Shelf	2
B	Lid and Firebox Assembly	1
C	Lid Handle Assembly	1
D	Smoke Stack Assembly	1
E	Charcoal Access Door-Left	1
F	Crank Handle	2
G	Damper Handle-Right	1
H	Damper	2
I	Side Shelf Support-Right Rear/Left Front	2
J	Ash Tray	1
K	Ash Tray Handle	1
L	Cart Brace	2
M	Right Leg Assembly	1
N	Caster	2

PART	DESCRIPTION	QUANTITY
O	Storage Basket	1
P	Axle	1
Q	Wheel	2
R	Left Leg Assembly	1
S	Charcoal Access Door-Right	1
T	Grate	4
U	Warming Rack	1
V	Damper Handle-Left	1
W	Side Shelf Support-Left Rear/Right Front	2
X	Charcoal Tray	2
Y	Divider Panel	1
Z	Temperature Gauge	1
A1	Temperature Gauge Nut Bezel	1

## HARDWARE CONTENTS (shown actual size)

---



## PREPARATION

---

Before beginning assembly of product, make sure all parts are present. Compare parts with package contents list and hardware contents list. If any part is missing or damaged, do not attempt to assemble the product.

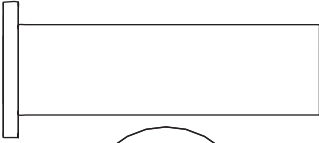
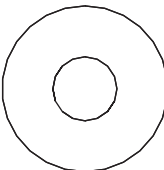
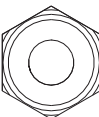
**Estimated Assembly Time:** 50 minutes with two people

Tools Required for Assembly (not included): Phillips screwdriver, adjustable wrench.

# ASSEMBLY INSTRUCTIONS

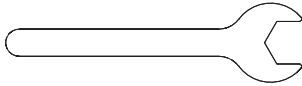
1. Insert axle (P) into left leg assembly (R). Attach one wheel (Q) to each side of axle (P) using one wheel axle sleeve (GG), one M8 washer (DD), and one M8 nut (EE).

## Hardware Used

<b>GG</b>	Wheel axle sleeve		x 2
<b>DD</b>	M8 Washer		x 2
<b>EE</b>	M8 Nut		x 2

2. Attach two casters (N) to right leg assembly (M) and secure with wrench (KK).

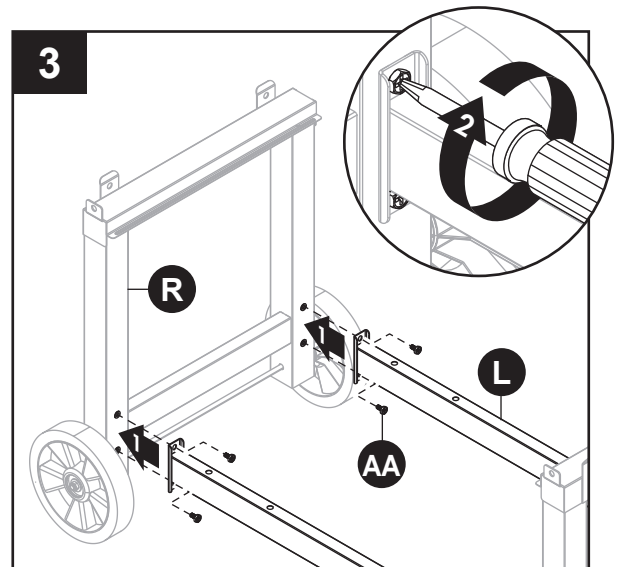
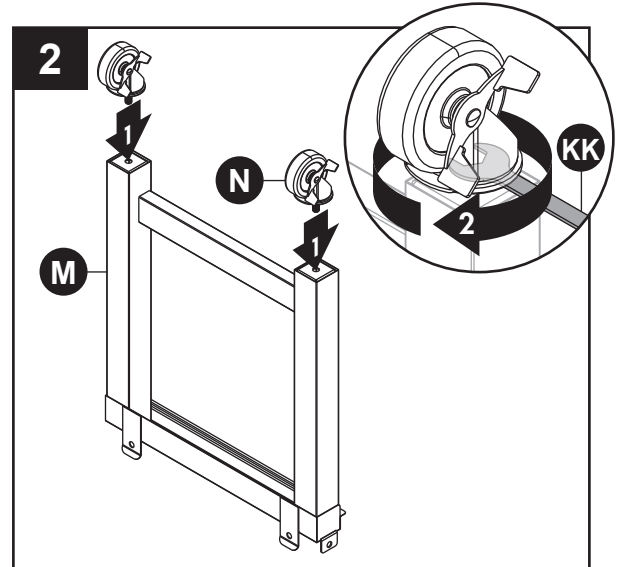
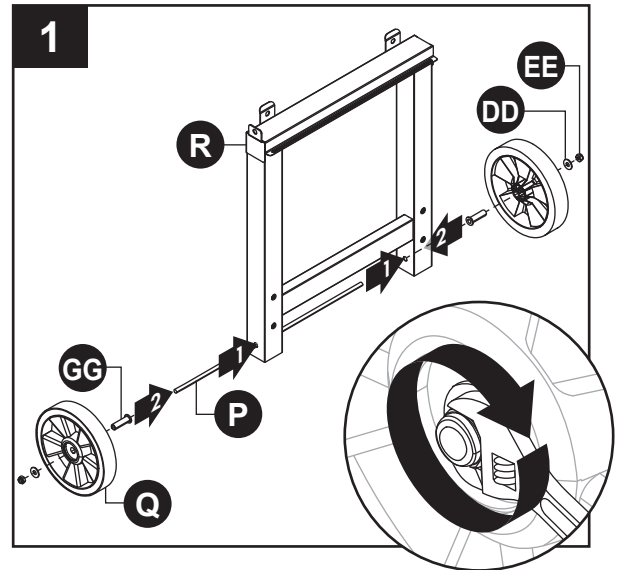
## Hardware Used

<b>KK</b>	Wrench (not to scale)		x 1
-----------	--------------------------	---	-----

3. Attach two cart braces (L) to left leg assembly (R) using two M6x12 bolts (AA) on each side.

## Hardware Used

<b>AA</b>	M6x12 Bolt		x 4
-----------	------------	---	-----

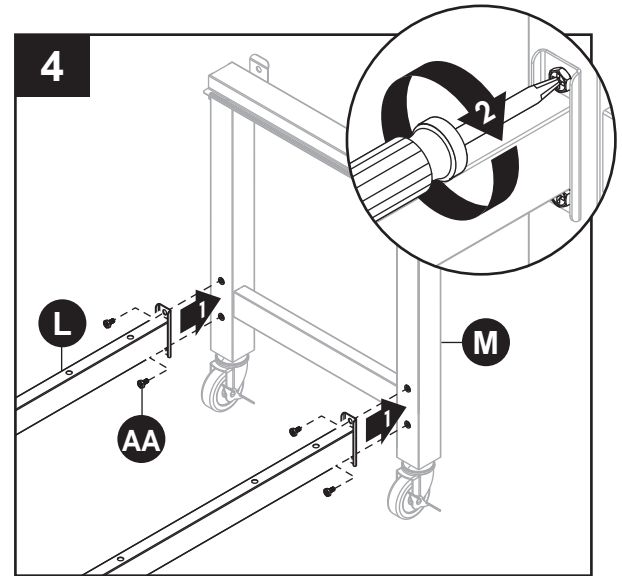


## ASSEMBLY INSTRUCTIONS

- Attach two cart braces (L) to right leg assembly (M) using two M6x12 bolts (AA) on each side.

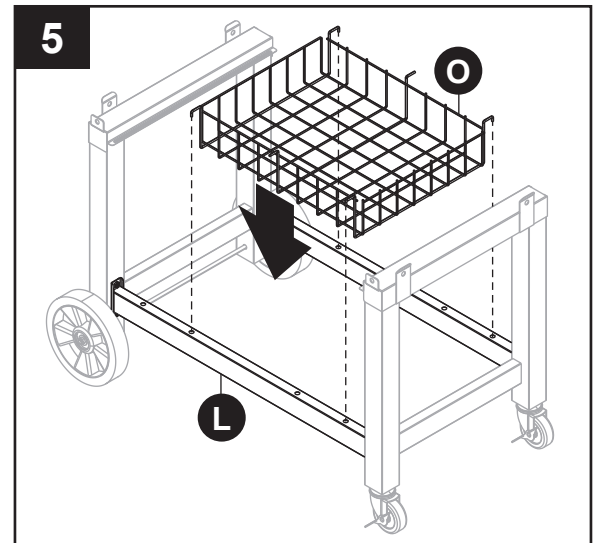
### Hardware Used

<b>AA</b>	M6x12 Bolt		x 4
-----------	------------	---	-----

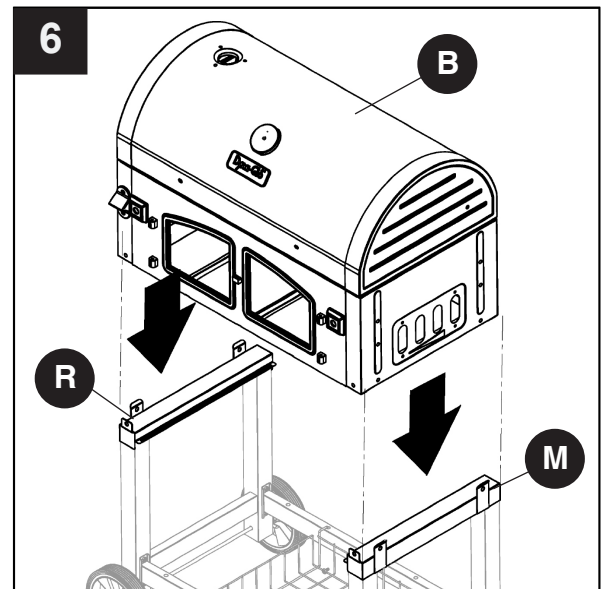


- Attach storage basket (O) to cart braces (L).

NOTE: Make sure four hooks on storage basket (O) are fully inserted into holes on cart braces (L).



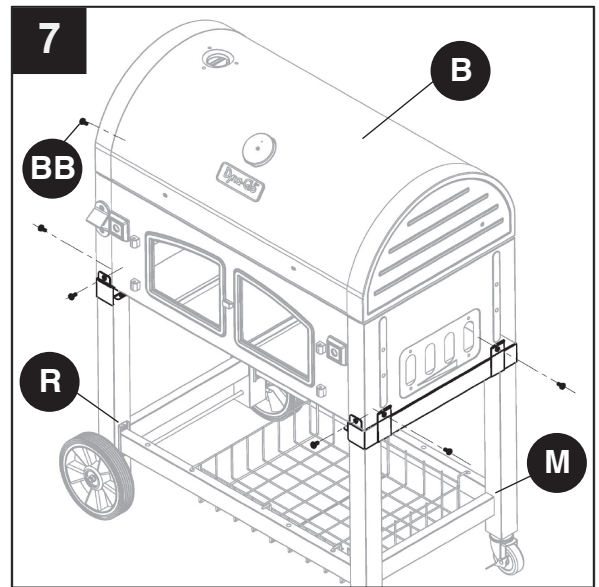
- With the help of a second person, set lid and firebox assembly (B) on top of left leg assembly (R) and right leg assembly (M).



## ASSEMBLY INSTRUCTIONS

7. Secure lid and firebox assembly (B) on top of left leg assembly (R) and right leg assembly (M) using six M6x20 bolts (BB).

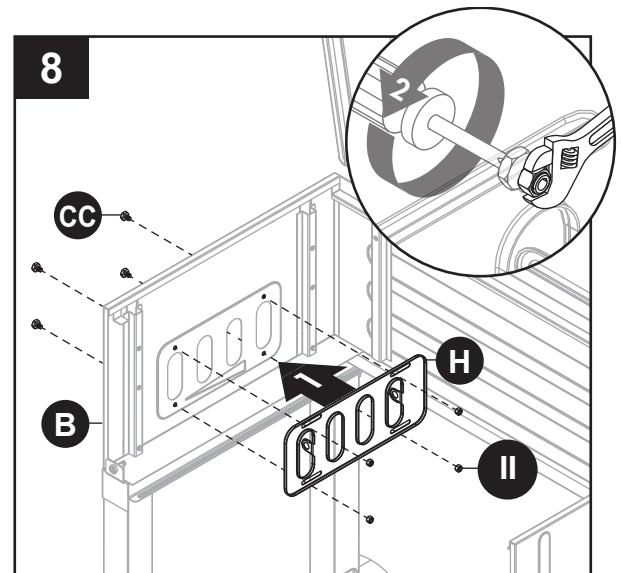
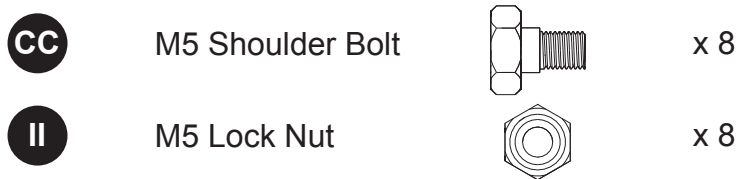
### Hardware Used



8. Attach damper (H) to inside of lid and firebox assembly (B) using four M5 shoulder bolts (CC) and four M5 lock nuts (II). Repeat for remaining damper (H).

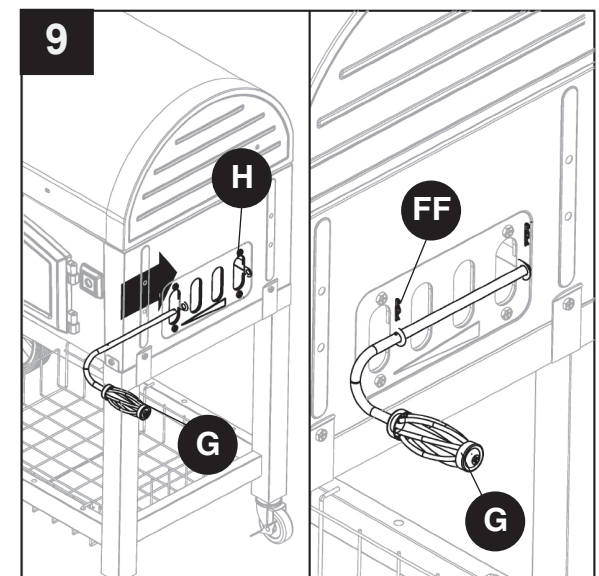
NOTE: For clarity, illustration is shown with front of lid and firebox assembly (B) removed.

### Hardware Used



9. Insert damper handle – right (G) into the two holes on right side damper (H). Secure with two cotter pins (FF). Repeat for damper handle – left (V).

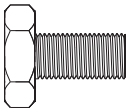
### Hardware Used

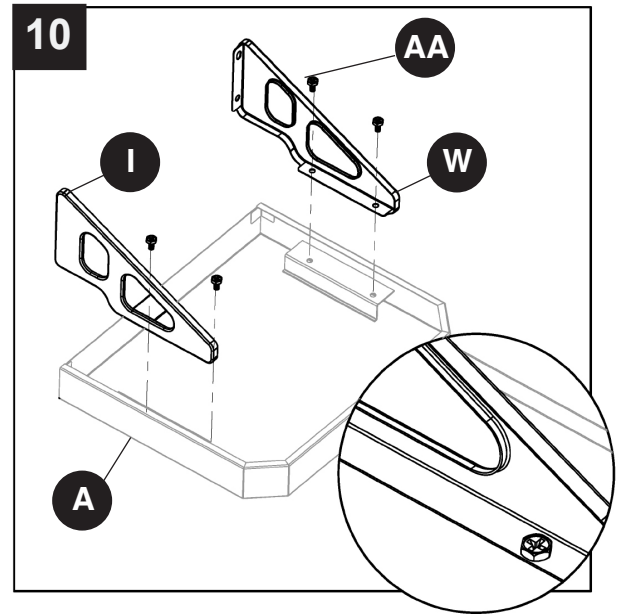


## ASSEMBLY INSTRUCTIONS

10. With shelf upside down, attach side shelf support – left rear/right front (W) and side shelf support – left front/right rear (I) to side shelf (A) using four M6x12 bolts (AA) on each side. Repeat for remaining shelf (A).

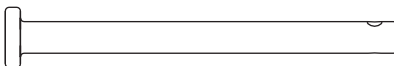
### Hardware Used

**AA** M6x12 Bolt  x 8

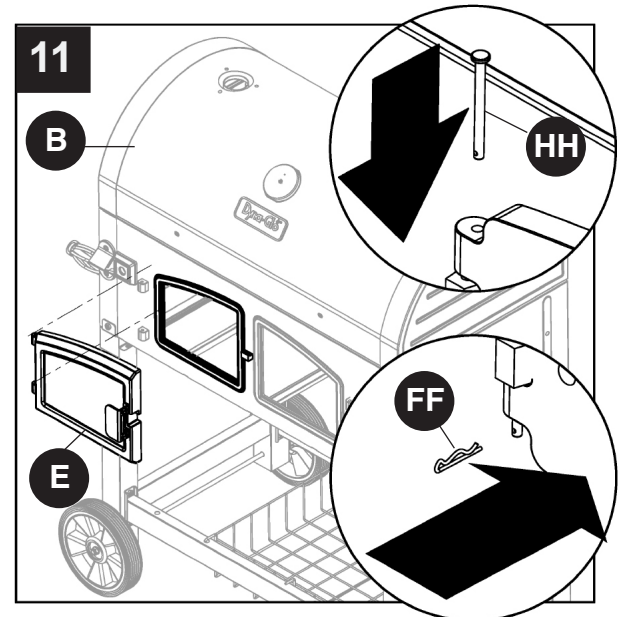


11. Attach left charcoal access door (E) to lid and firebox assembly (B). Insert two hinge bolts (HH) into hinges on charcoal access door (E) and secure with two cotter pins (FF). Repeat for right charcoal access door (S).

### Hardware Used

**HH** Hinge Bolt  x 4

**FF** Cotter Pin  x 4

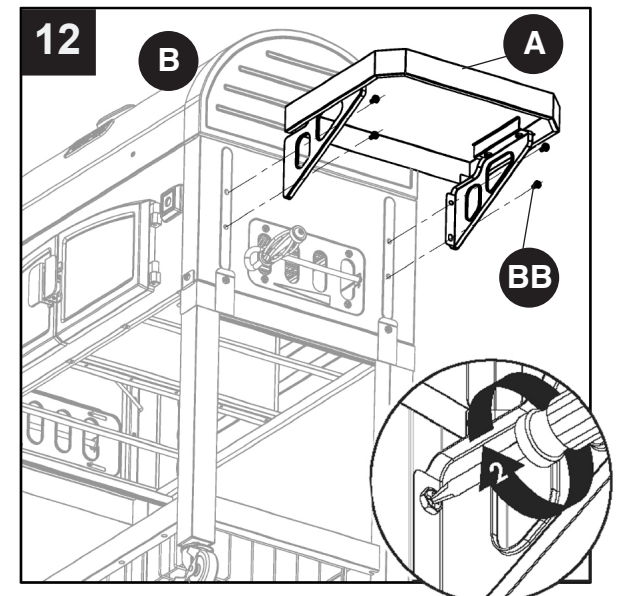


12. Attach right side shelf (A) to lid and firebox assembly (B) using four M6x20 bolts (BB). Repeat on left side with remaining side shelf (A).

NOTE: First secure two upper M6x20 bolts (BB), then lower M6x20 bolts (BB).

### Hardware Used

**BB** M6x20 Bolt  x 8

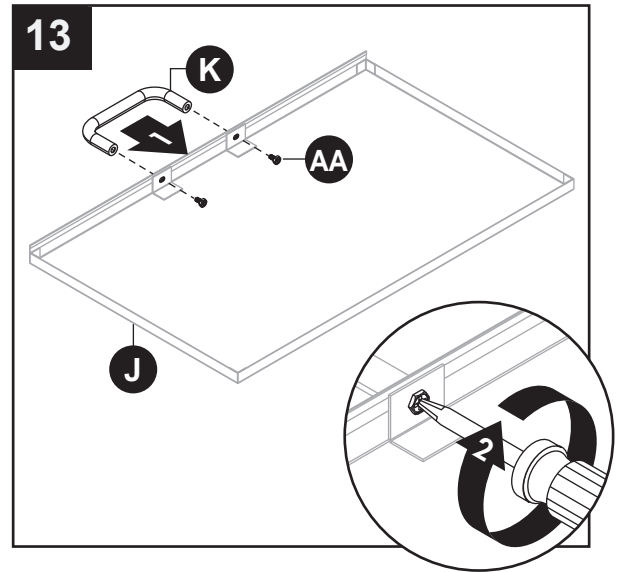


## ASSEMBLY INSTRUCTIONS

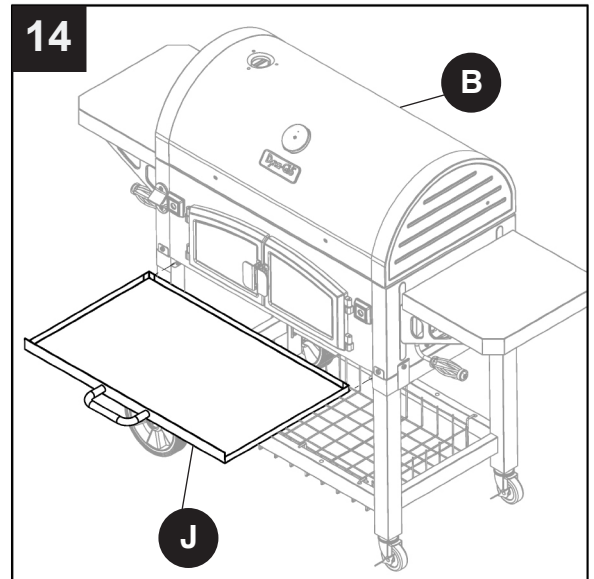
13. Attach ash tray handle (K) to ash tray (J) using two M6x12 bolts (AA).

### Hardware Used

**AA** M6x12 Bolt  x 2



14. Insert ash tray (J) into lid and firebox assembly (B).

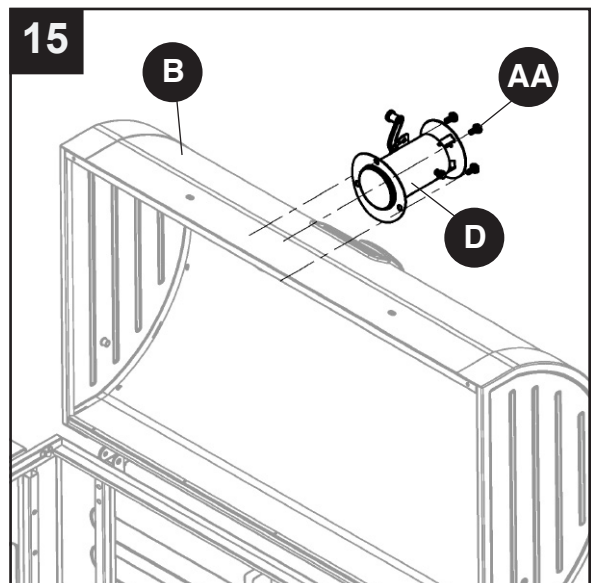


15. Attach smoke stack assembly (D) to lid and firebox assembly (B) using three M6x12 bolts (AA).

NOTE: Make sure the smoke stack damper adjustment handle faces the front of the grill.

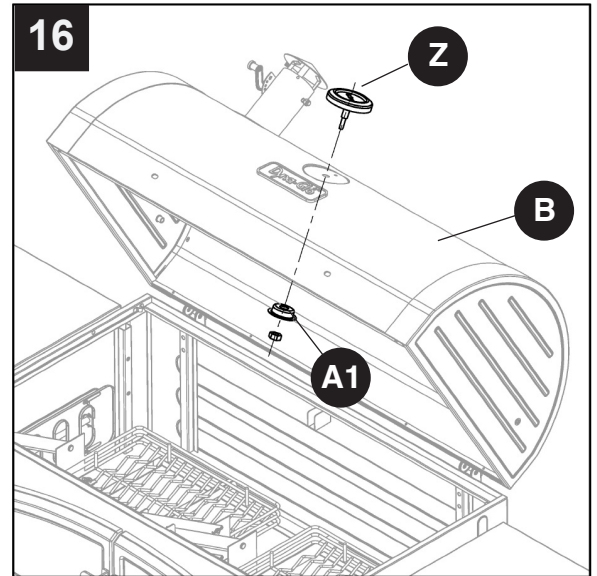
### Hardware Used

**AA** M6x12 Bolt  x 3



## ASSEMBLY INSTRUCTIONS

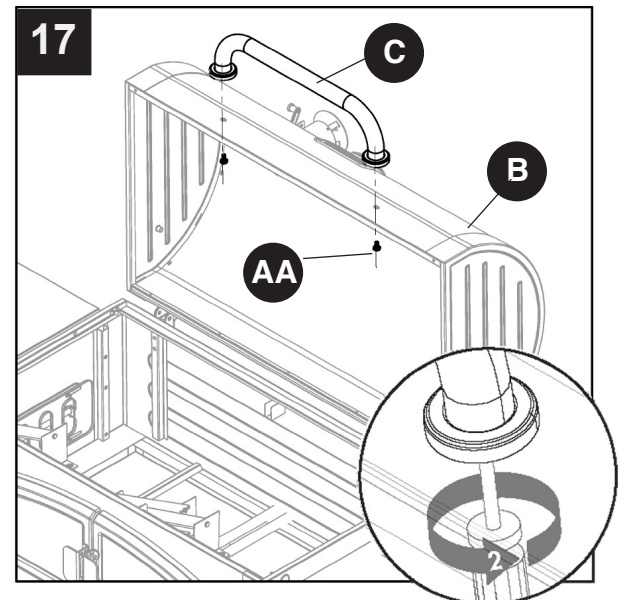
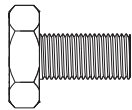
16. Attach temperature gauge (Z) and temperature gauge nut bezel (A1) to lid and firebox assembly (B) using pre-assembled nut .



17. Attach lid handle assembly (C) to lid and firebox assembly (B) using two M6x12 bolts (AA).

### Hardware Used

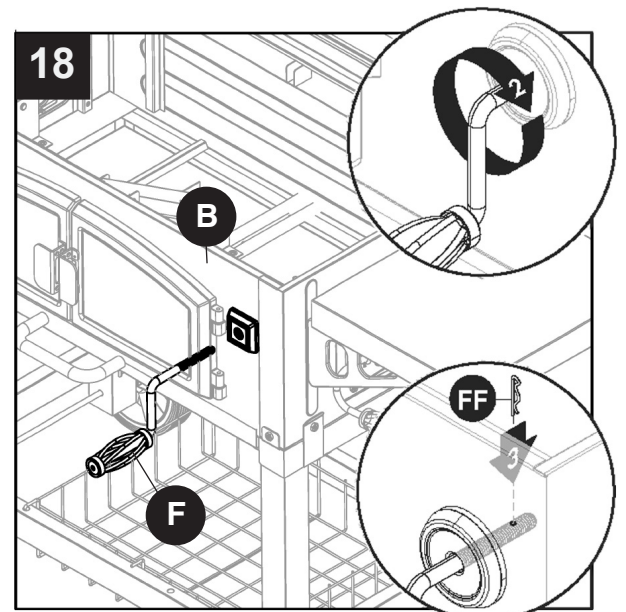
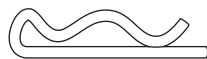
AA M6x12 Bolt x 2



18. Thread crank handle (F) into lid and firebox assembly (B). Secure with one cotter pin (FF). Repeat for remaining crank handle (F).

### Hardware Used

FF Cotter Pin x 2





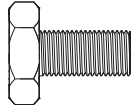
## ASSEMBLY INSTRUCTIONS

19. Attach two charcoal trays (X) to inside of lid and firebox assembly (B) using four M6x12 bolts (AA) each.

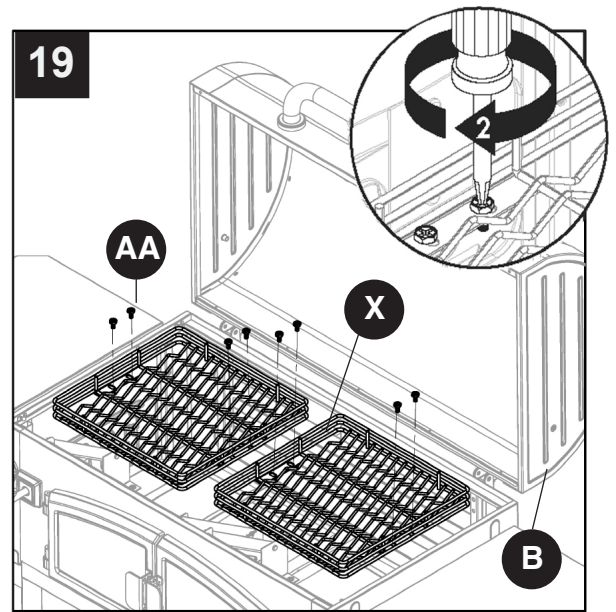
### Hardware Used

AA

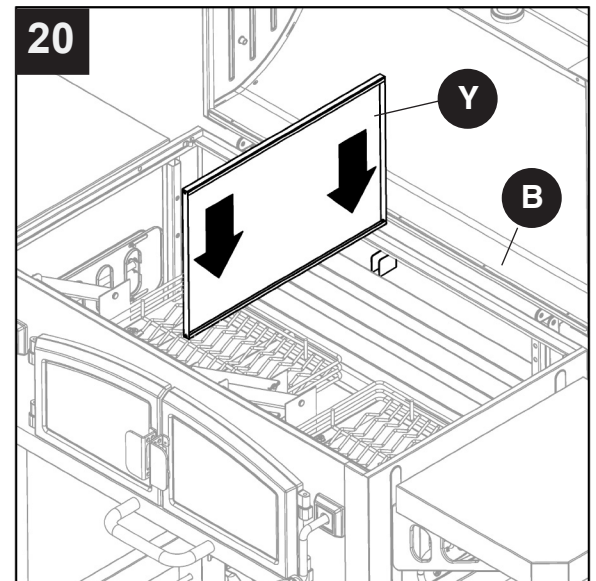
M6x12 Bolt



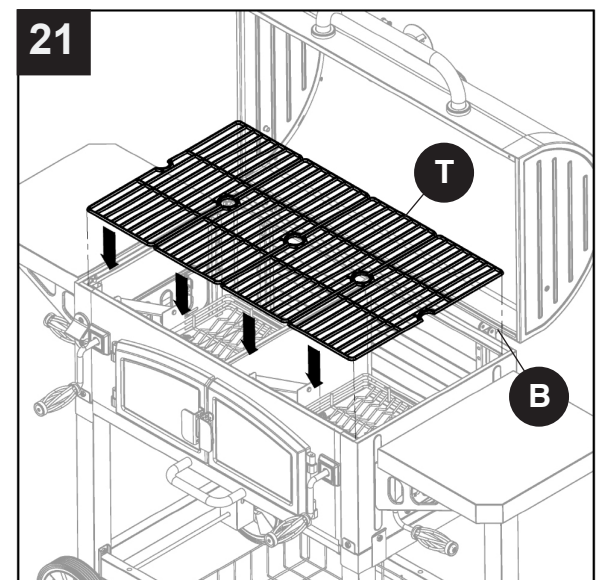
x 8



20. Insert the divider panel (Y) into the inside of the lid and firebox assembly (B).



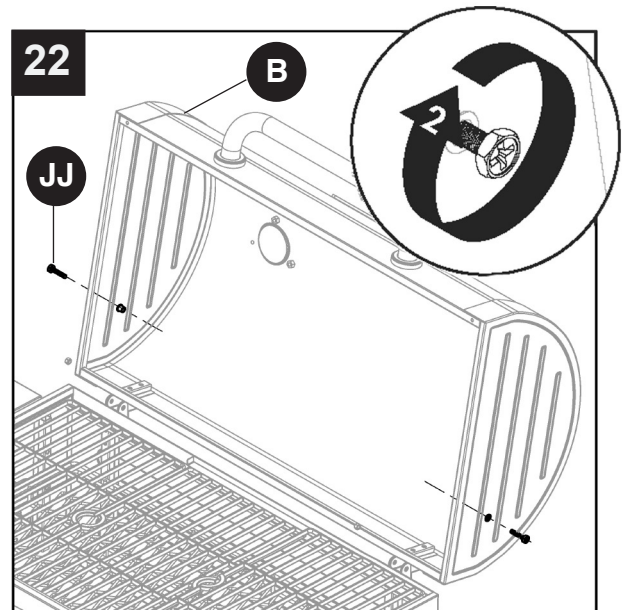
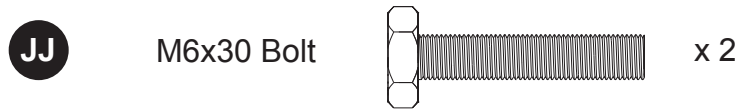
21. Place four grates (T) on lid and firebox assembly (B).



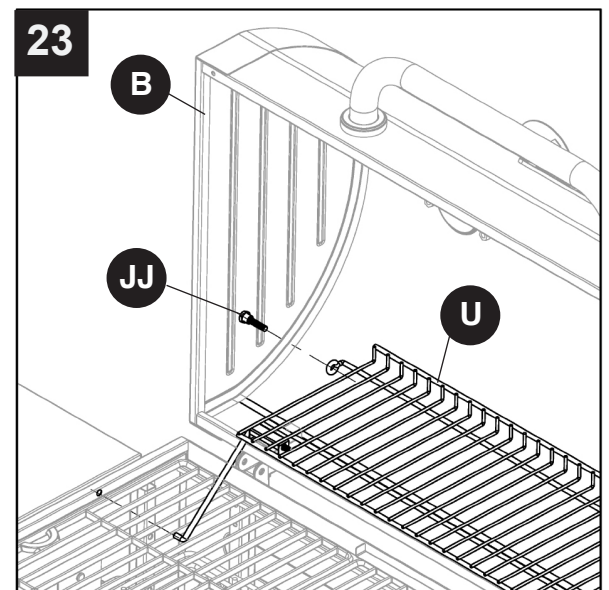
## ASSEMBLY INSTRUCTIONS

22. Attach one M6x30 bolt (JJ) on each side of lid and firebox assembly (B). DO NOT fully tighten.

### Hardware Used



23. Insert one end of warming rack (U) onto M6x30 bolt (JJ) and into the hole on lid and firebox assembly (B). Repeat for other side.



24. Fully tighten M6x30 bolts (JJ) on each side of lid and firebox assembly (B).

