

This Owner's Manual is provided and hosted by [Appliance Factory Parts](#).



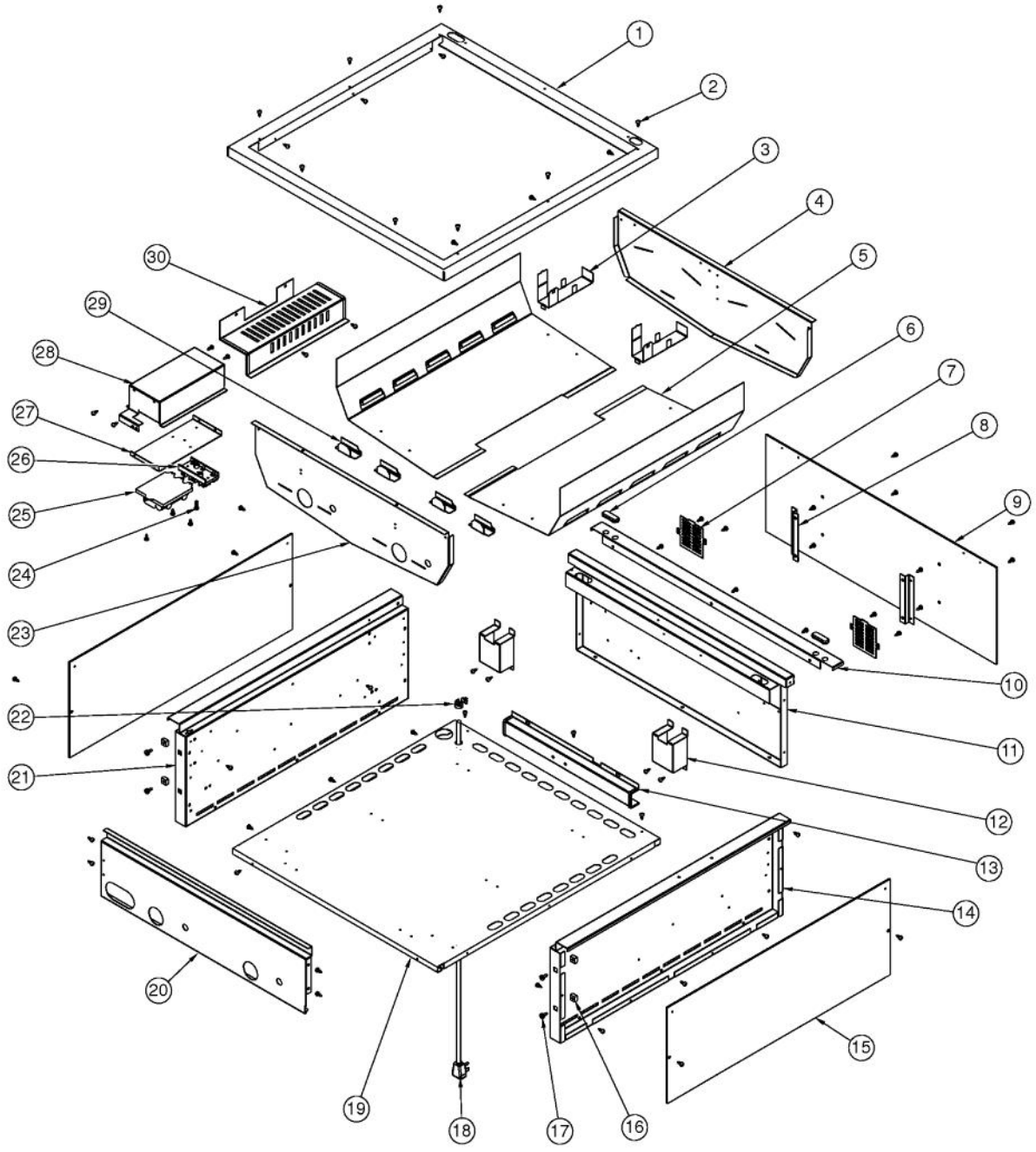
# VIKING VGBQ3002RE2 Owner's Manual

[Shop genuine replacement parts for VIKING  
VGBQ3002RE2](#)

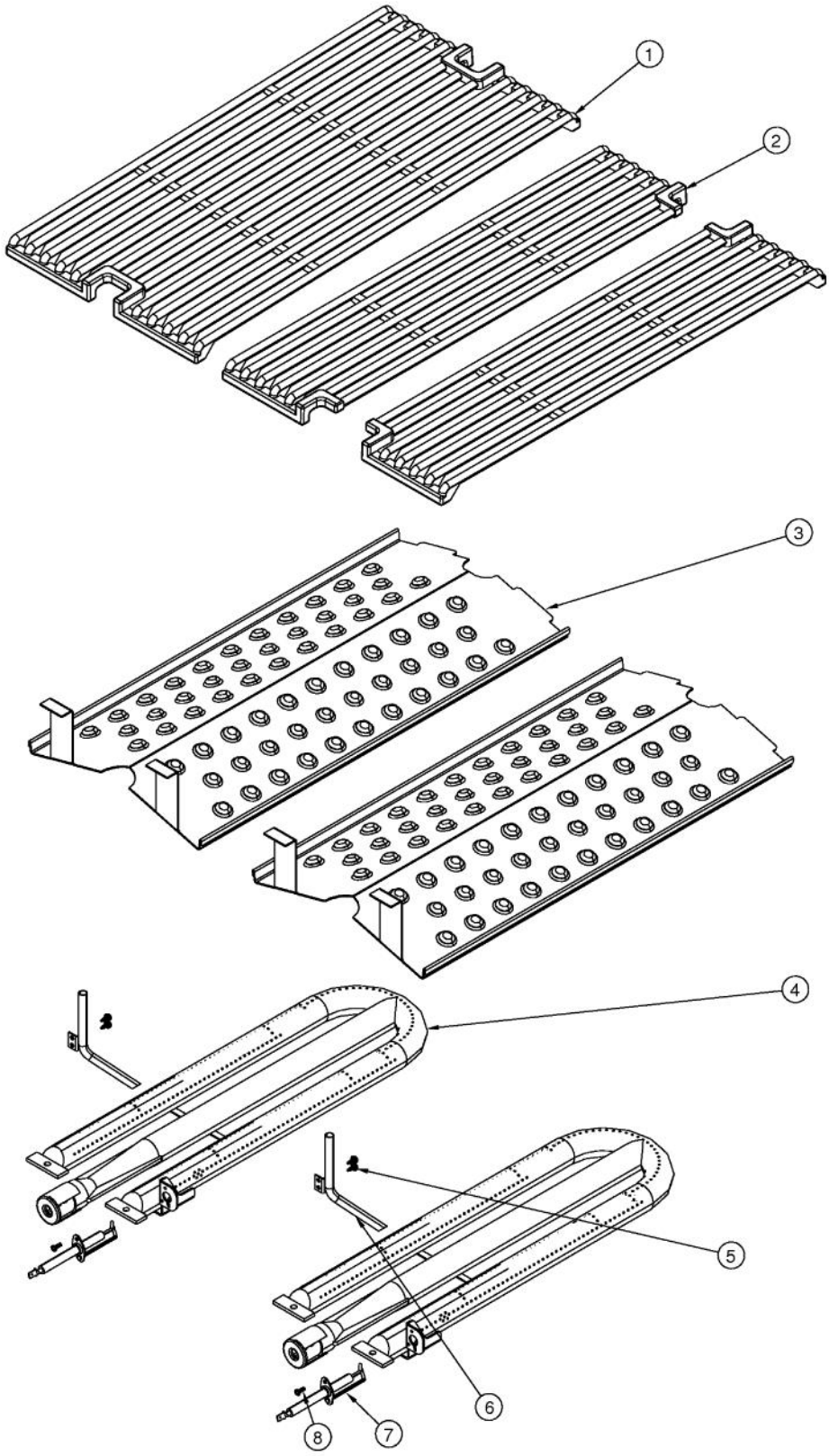


[Find Your VIKING Grill Parts - Select From 210 Models](#)

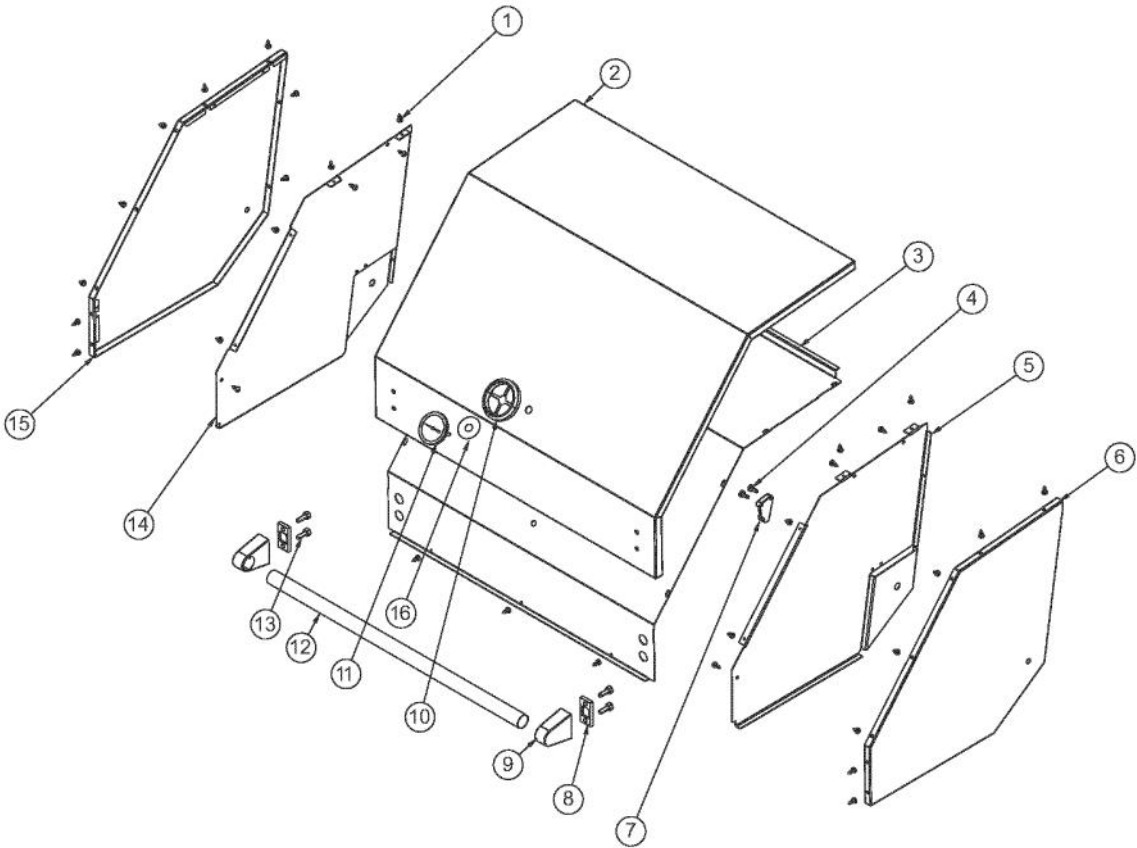
----- Manual continues below -----



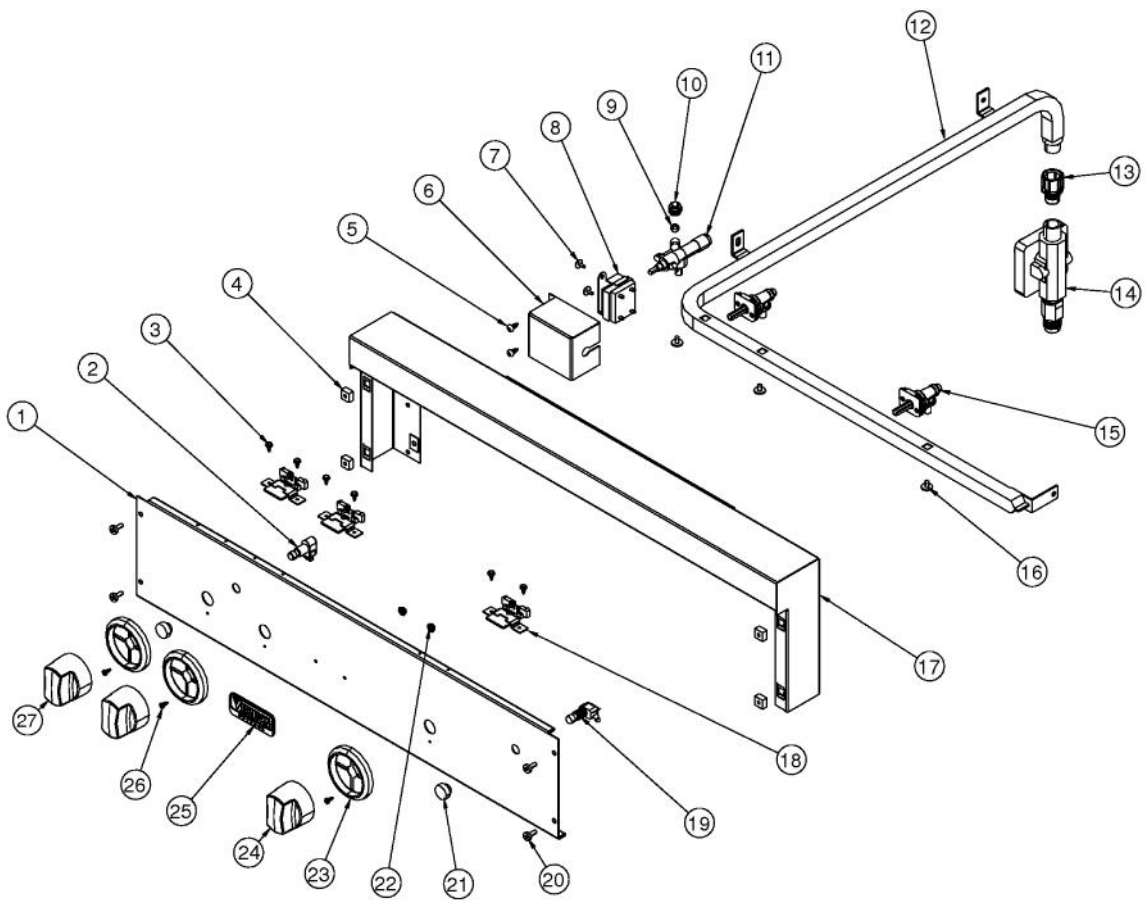
Ref #	Part Number	Qty.	Description
1	B20015516	1	GRILL FRAME 30
2	020051-000	65	SCR, DR, PHLP,PNH, 410SS, NPLT, 10-16 X 1/2
3	006010-000	2	GRILL BURNER REAR BRACKET
4	025544-000	1	BOX, BNR, BACK, 30
5	025543-000	2	BOX, BRN, BOT, 30
6	002671-000	2	RUBBER DOOR BUMPER
7	002353-000	2	GRILL PLUG VENT
8	B2006305	2	HEAT SHIELD BRACKET
9	L1005399	1	REAR HEAT SHIELD 30``
10	003856-000	1	30 GRILL REAR TRIM
11	B20015513	1	GRILL BOX BACK 30
12	002355-000	2	GRILL RECEPTACLE BOX
13	A2000210	1	WIRE CHANNEL
14	B2005203	1	GRILL BOX SIDE RH (PHASE 2)
15	L1005398	2	SIDE HEAT SHIELD
16	PD030050	4	10-24 CAGE NUT SS
17	PD020056	4	NO.10-24 X 1/2 PH.TR. M.S. SS
18	PE070791	1	GRILL POWER SUPPLY CORD (8 FT)
19	B20015510	1	GRILL BOX BOTTOM 30
20	025801-000	1	SUPPORT, GRL, FR, VGBQ3002RE2
21	B2005204	1	PANEL, GRL, LH
22	PD040044	1	SNAP THRU BUSHING 1/4DIA CORD
23	025542-000	1	BOX, BNR, FR, 30
24	PD020166	1	NO.10 X 3/4 PAN PHIL. TEK. XSSX
25	PA020047	1	INVENSYS 0+4 RE-IGNITION SPARK MODULE
26	PE070855	1	E SERIES TERMINAL BLOCK
27	B20015568	1	0+4 SM/TB HOUSING BTM
28	B30015552	1	0+4 SPARK MODULE TERMINAL HOUSING
29	006011-000	4	GRILL BURNER FRONT BRACKET
30	004089-000	1	POWER CORD SHIELD
NI	025700-000		HOUSING, MDL, ASM, LH (INCLUDES ITEMS 24 - 28 & ITEM 2)



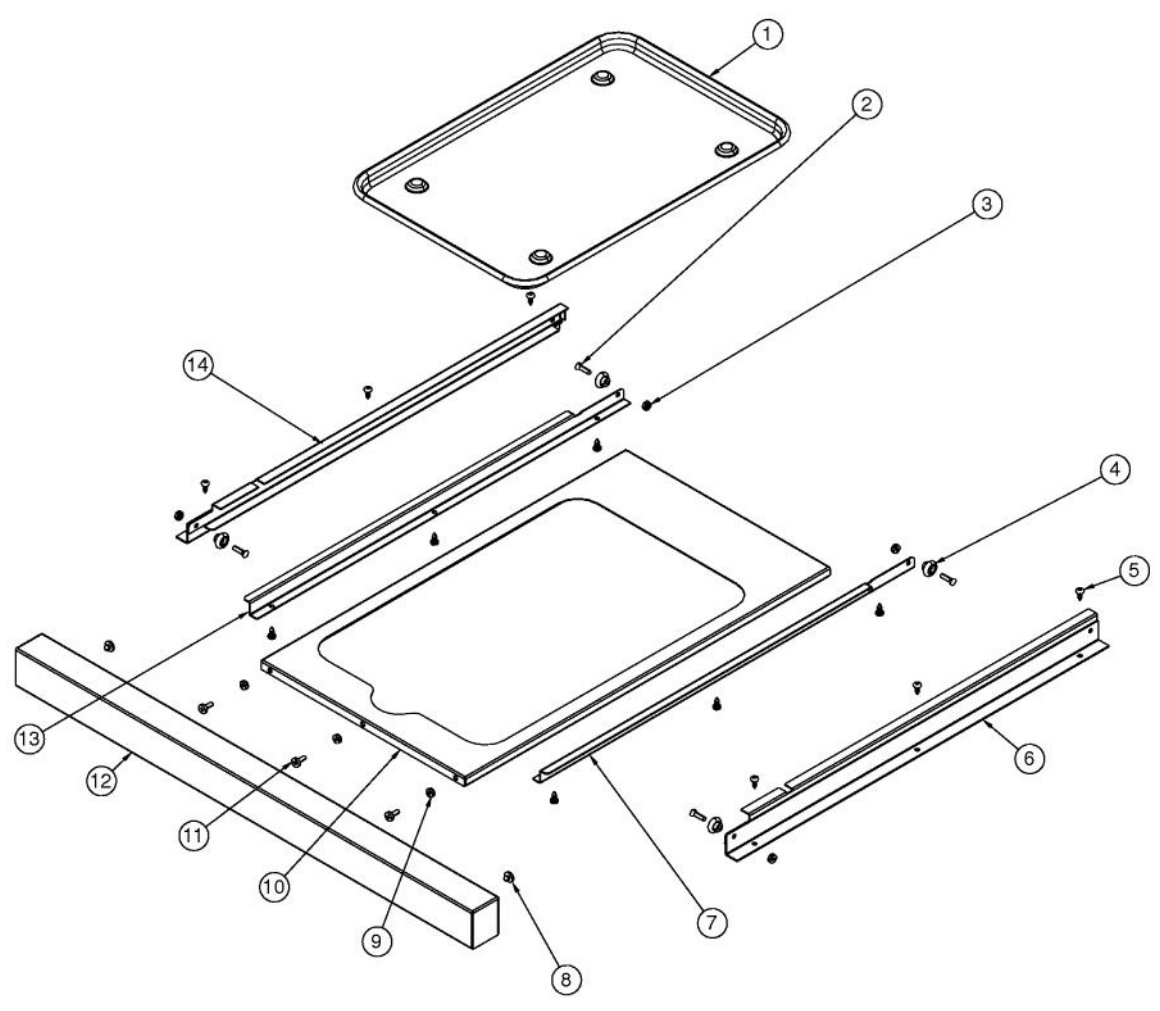
Ref #	Part Number	Qty.	Description
1	002369-000	1	REDESIGN BBQ GRATE - FULL
2	002370-000	2	REDESIGN BBQ GRATE - HALF
3	024157-000	2	SHIELD, GRS
4	023000-000	2	BURNER, GRL, ASM, U
5	008026-000	4	NO.6-20 HEX WASHER SS SCREW
6	PB020114	2	FLASH TUBE (VGBQ3002T)
7	PB040288	2	SMOKER BURNER IGNITER
8	004706-000	2	MACHINE SCREW, 6-32 X 3/8, PAN HD, PHILLIPS
NI	025701-000	1	BURNER, GRL, ASM (INCLUDES ITEMS 4, 7, & 8)



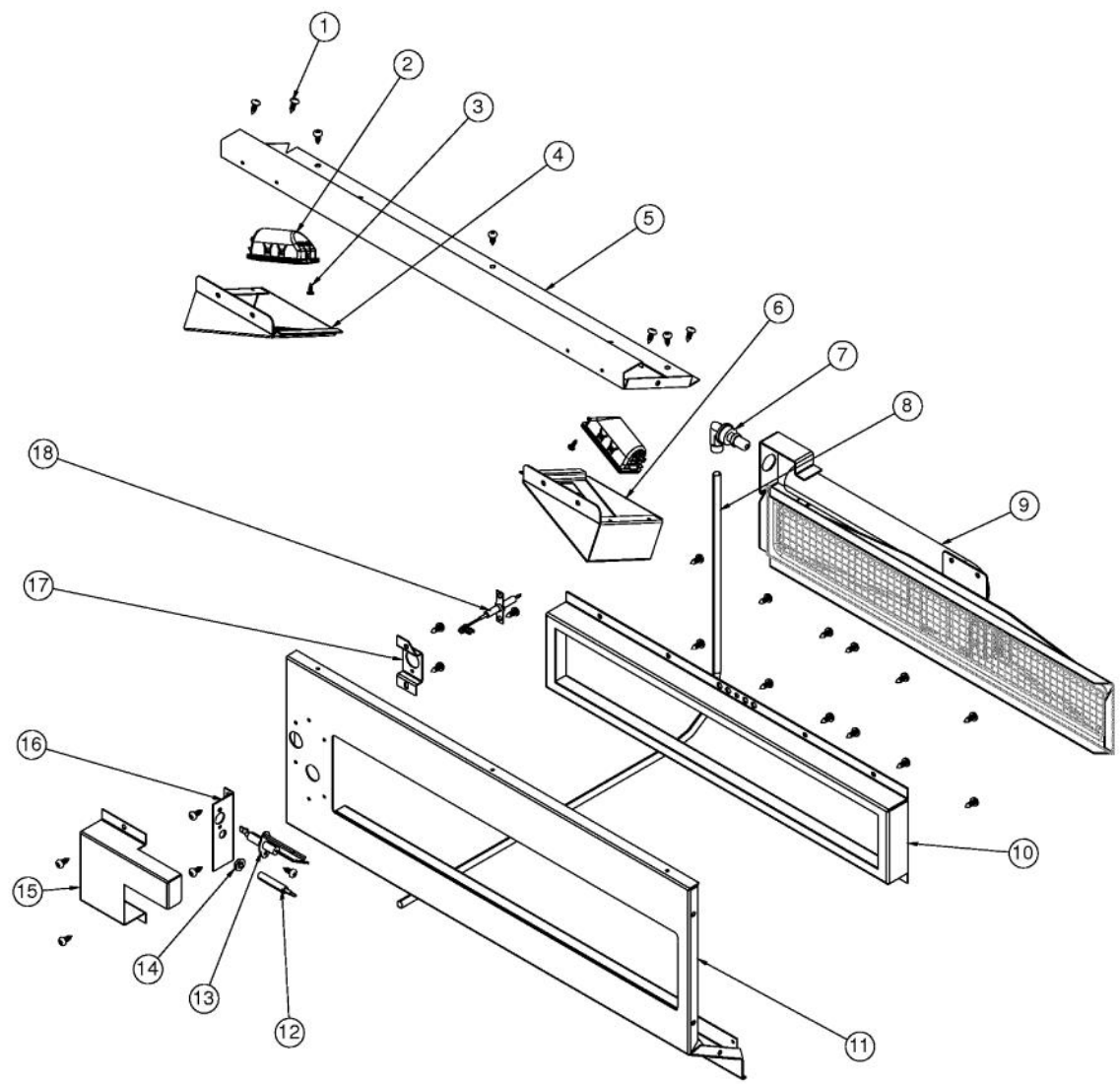
Ref #	Part Number	Qty.	Description
1	020051-000	35	SCR, DR, PHLP,PNH, 410SS, NPLT, 10-16 X 1/2
2	025802-000	1	SHIELD, CANOPY, FR
3	003635-000	1	30 CANOPY HEAT SHIELD
4	PD020056	2	NO.10-24 X 1/2 PH.TR. M.S. SS
5	007379-000	1	GRILL CANOPY INSIDE RH
6	003630-000	1	GRILL CANOPY OUTSIDE RH
7	007215-000	1	CANOPY SPRING END MOUNT-RH
8	PD040010	2	DOOR HANDLE SPACER
9	000268-000	2	HANDLE END CAP ASSY
10	PB010304	1	KNOB BEZEL
11	020659-000	1	GAUGE, BMTL, TEMPERATURE
12	PE030041	1	DOOR HANDLE (CANOPY) XSSX (VGBQ30)
13	PD020069	4	CAP SCREW 1/4-20 X 3/4 SS
14	003633-000	1	GRILL CANOPY INSIDE LH
15	003632-000	1	GRILL CANOPY OUTSIDE LH
16	026724-000	1	SPACER, WSHR
NI	025805-000	1	HOOD, GRL, ASM, 30 (INCLUDES ITEMS 1 - 15)



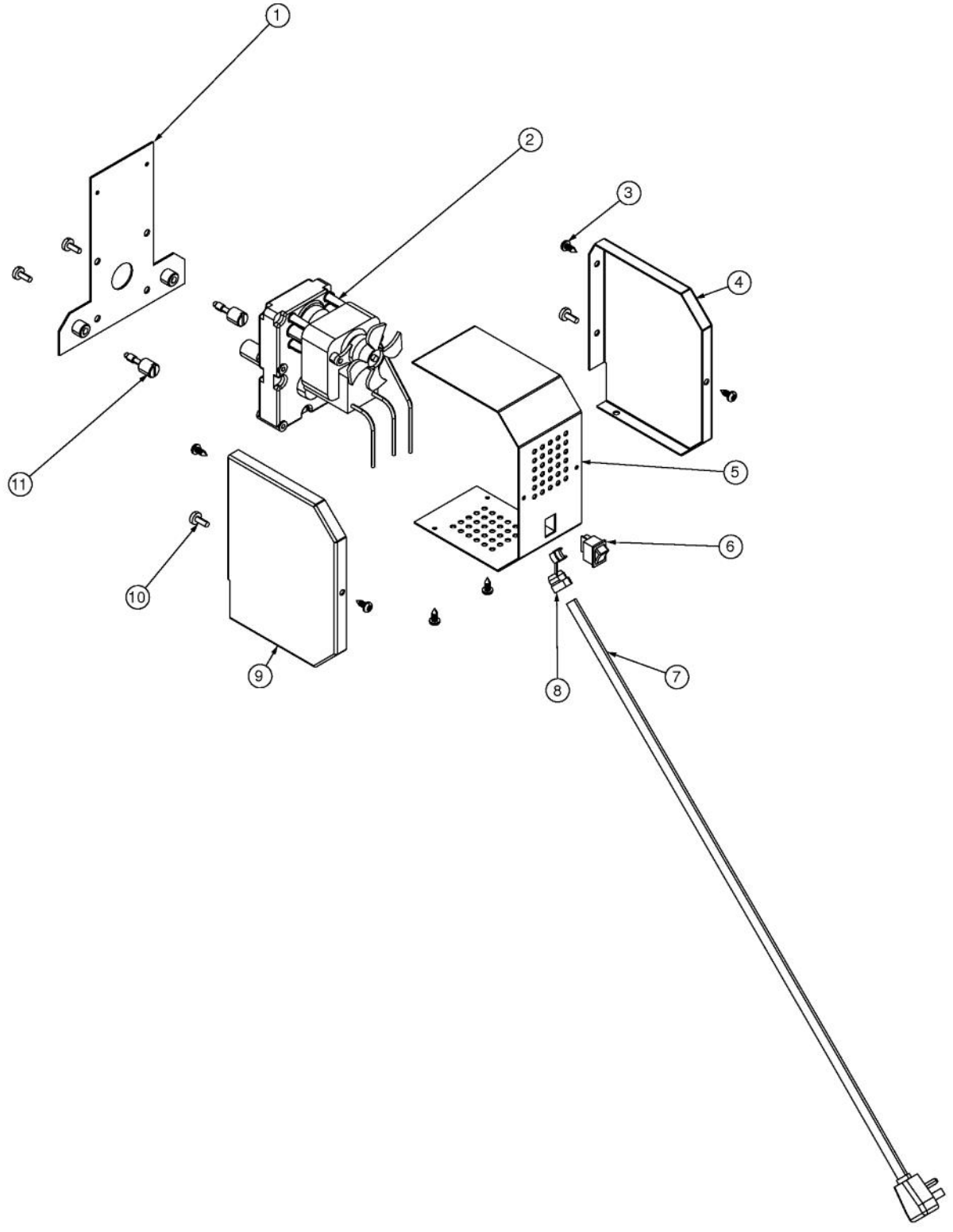
Ref #	Part Number	Qty.	Description
1	025806-000	1	CONTROL PANEL, VGBQ3002RE2
2	PE050063	1	SPARKER SWITCH
3	008026-000	6	NO.6-20 HEX WASHER SS SCREW
4	PD030050	4	10-24 CAGE NUT SS
5	020051-000	2	SCR, DR, PHLP,PNH, 410SS, NPLT, 10-16 X 1/2
6	007657-000	1	PROT. COVER
7	PD020073	2	SRW NO.10 X 24 X 3/8 WAFER HD TYPE23
8	006021-000	1	SCE, PWR, LED, 12VAC
9	PB040263	1	5/16 FERRULE
10	PB040228	1	FITTING BRASS COMPRESSION NUT
11	PB010191	1	I.R. SAFETY VALVE (PHASE II GRILLS)
11	PB010220	1	I.R. SAFETY VALVE LP
12	025799-000	1	MANIFOLD, GRL, 30
13	023650-000	1	NIPPLE, ASM
14	G3004936	1	REGULATOR ASSY - NAT (P1 GRILL)
14	G3004937	1	REGULATOR ASSY - L.P. W/HOSE
15	014952-000	2	VALVE, GAS, ASM, U BNR
15	006389-000	2	GAS VALVE - LP
16	PD010012	5	VALVE BOLT 1/4-20 UNC-2B 5/16 M.S.
17	G3005223	1	LANDING LEDGE ASSY 30 (PHASE 2)
18	005999-000	3	LED BOARD ASSEMBLY
19	PE050019	1	OVEN LIGHT SWITCH (VGSO166) 90-DEG.
20	PD020056	4	NO.10-24 X 1/2 PH.TR. M.S. SS
21	PB010163	2	OVEN LIGHT SWITCH KNOB BK
22	PD030006	2	CAPPED WASHER PAL NUT
23	PB010304	3	KNOB BEZEL
24	003561-000	2	OUTDOOR GRILL KNOB
25	015009-000	1	OUTDOOR LOGO - 3 CHROME
26	020041-000	3	SCR, DR, PH, PNH, 410 SS, NPLT, 6-20 X 3/8
27	003563-000	1	ROTIS BURNER KNOB
NI	025800-000	1	MANIFOLD, GAS, ASM, VGBQ3002RE2
NI	026744-000	1	MANIFOLD, LP GAS ASM, VGBQ3002RE2
NI	025702-000	1	HOUSING, XFMR, ASM (INCLUDES ITEMS 6 - 8)
NI	025808-000	1	PANEL, CTRL, ASM VGBQ3002RE2 (INCLUDES ITEMS 1 - 3 & 18 - 27)



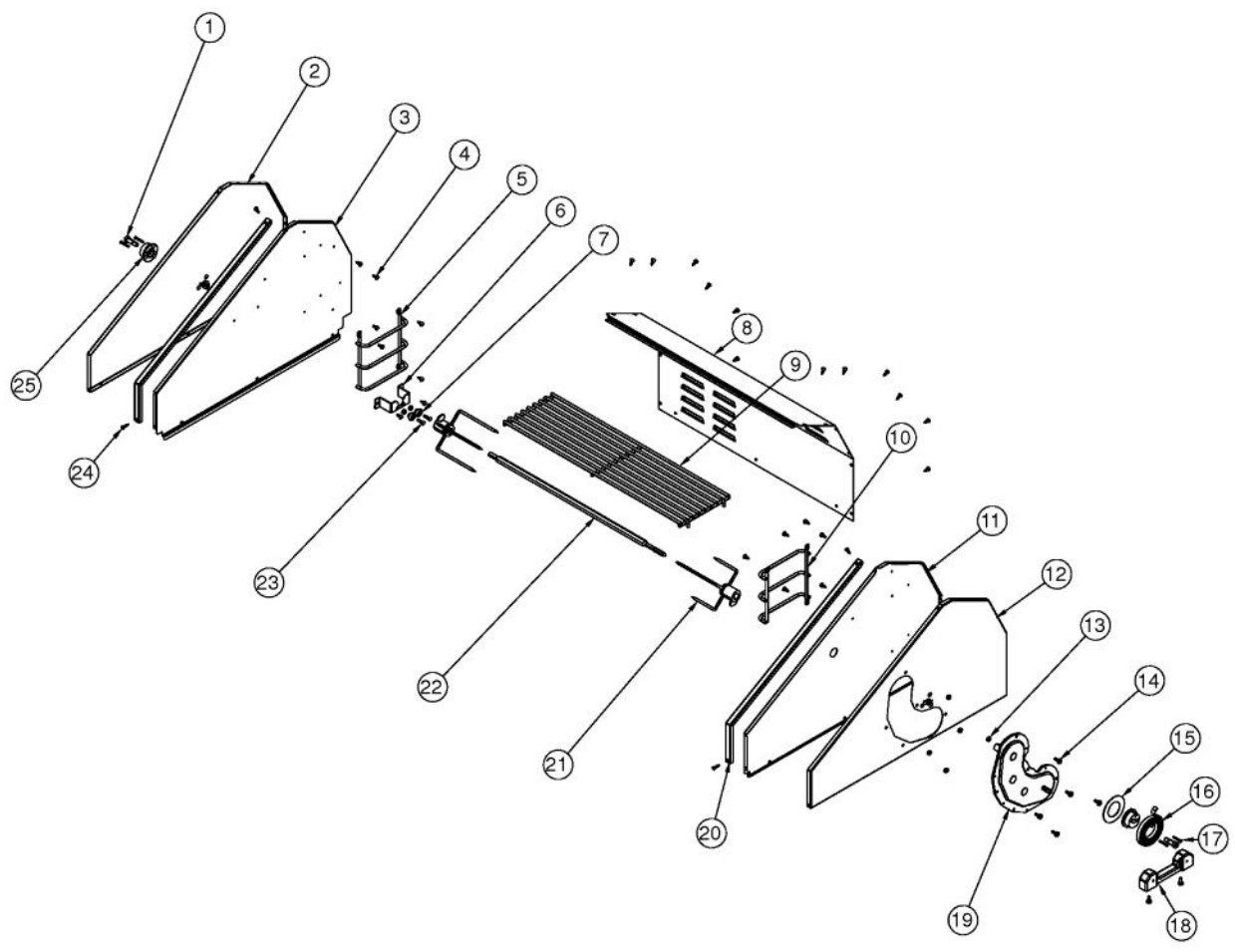
Ref #	Part Number	Qty.	Description
1	J2101749	1	GREASE PAN
2	PD020082	4	10 X 24 COUNTERSUNK S.S. SCREW
3	PD030044	4	10-24 KEPS NUT SS
4	PC020025	4	DRIP TRAY WHEEL
5	020051-000	12	SCR, DR, PHLP,PNH, 410SS, NPLT, 10-16 X 1/2
6	G3005215	1	DRIP TRAY SLIDE - RH
7	B2005316	1	DRIP TRAY RUNNER RH
8	PD040004	2	GROMMET BUMPER
9	PD030044	3	10-24 KEPS NUT SS
10	B2005312	1	DRIP TRAY 30 (PHASE 2)
11	PD020056	3	NO.10-24 X 1/2 PH.TR. M.S. SS
12	B3005315	1	30 INCH DRIP TRAY HANDLE (PHASE 2)
13	G3005214	1	DRIP TRAY SLIDE - LH
14	B2005317	1	DRIP TRAY RUNNER LH (PHASE 2)
NI	G3205308	1	30 INCH DRIP TRAY ASSY (PHASE 2) (INCLUDES ITEMS 1 - 14)



Ref #	Part Number	Qty.	Description
1	020051-000	27	SCR, DR, PHL,PNH, 410SS, NPLT, 10-16 X 1/2
2	001310-000	2	120V HALOGEN LIGHT
3	020041-000	2	SCR, DR, PH, PNH, 410 SS, NPLT, 6-20 X 3/8
4	000602-000	1	GRILL LIGHT HOUSING LH
5	E9105393	1	30`` FRONT HOUSING TOP
6	000603-000	1	GRILL LIGHT HOUSING RH
7	PB040124	1	90 DEG. ORIFICE FITTING
8	PB020096	1	48 5/16 S.S. FLEX TUBING REPL F2003505
9	G3005289	1	BURNER,ASM,,ASM,IR,20
10	B2005347	1	INFRARED FRAME
11	G91015522	1	FRONT HOUSING ASSY (VGIQ3002RT)
12	PB010162	1	THERMOCOUPLE - BBQ GRILL W/ ROTIS
13	PB040160	1	WOK IGNITER
14	PD030048	1	THERMOCOUPLE NUT M08-VGBQ-8743300007
15	B20015402	1	I/R IGNITOR COVER LH
16	B20015403	1	IR IGNITOR BRACKET
17	B20015401	1	FLEXIBLE IGNITOR STANDOFF
18	PB040280	1	FLEXIBLE ROTISSERIE IGNITOR



Ref #	Part Number	Qty.	Description
1	002081-000	1	ROT MOTOR MOUNTING PLATE ASSY
2	PE070184	1	ROTISSERIE MOTOR
3	020051-000	6	SCR, DR, PHLP,PNH, 410SS, NPLT, 10-16 X 1/2
4	B2005285	1	PHASE II ROTIS BOX FRONT
5	B2005286	1	PHASE II ROTIS COVER
6	PE050051	1	ROTISSERIE SWITCH
7	PE070189	1	ELECTRICAL SUPPLY CORD - BBQ GRILL
8	PD040044	1	SNAP THRU BUSHING 1/4DIA CORD
9	B2005284	1	PHASE II ROTIS BOX FRONT
10	PD020056	4	NO.10-24 X 1/2 PH.TR. M.S. SS
11	PD010090	2	ROTISSERIE FASTENER KNOB
NI	G3205282	1	ROTISSERIE MOTOR ASSEMBLY (PHASE 2) (INCLUDES ITEMS 1 THRU 11)



Ref #	Part Number	Qty.	Description
1	034607-000	2	FASTENER, BOLT, 5/16 - 1-1/2
2	G5005257	1	OUTSIDE WINDSHIELD ASSY LH
3	B20015419	1	INSIDE WINDSHIELD LH
4	020051-000	26	SCR, DR, PHLP,PNH, 410SS, NPLT, 10-16 X 1/2
5	PB060113	1	WARMING RACK SUPPORT LH
6	B2005278	1	ROTISSERIE ROLLER BRACKET (PHASE 2)
7	PC020025	2	DRIP TRAY WHEEL
8	003652-000	1	30 GRILL REAR COVER
9	PB060057	1	WARMING RACK 30
10	PB060112	1	WARMING RACK SUPPORT RH
11	B20015418	1	INSIDE WINDSHIELD RH
12	G5005256	1	OUTSIDE WINDSHIELD ASSY RH
13	PD030044	7	10-24 KEPS NUT SS
14	PD020056	7	NO.10-24 X 1/2 PH.TR. M.S. SS
15	007818-000	1	RETAINER, CANOPY SPRING
16	007206-000	1	CANOPY, SPRING, ASSIST- LIGHT
17	006779-000	4	NO.6-32 X 1.0 SS FLAT HD SCREW
18	PB060055	1	ROTISSERIE MOUNT CASTING
19	PC070024	1	ROTIS. GEAR BOX ASSY
20	B20015574	2	GRILL WINDSHIELD TRIM
21	PB060058	2	SPIT FORK
22	PB060054	1	ROTIS SPIT ROD 30
23	PD020082	2	10 X 24 COUNTERSUNK S.S. SCREW
24	020037-000	4	SCR, DR, FCSKHP, 410 SS, NPLT, 8-18 X 3/4
25	005942-000	2	SPRING INDEX

*No Image  
Available*

Ref #	Part Number	Qty.	Description
NI	026343-000	1	HARN, MAIN, 3002RE2

*No Image  
Available*

Ref #	Part Number	Qty.	Description
NI	G40016229	1	IGNITOR WIRE 34

*No Image  
Available*

Ref #	Part Number	Qty.	Description
NI	025323-000	1	HARNESS, WIRE, ROTISSERIE

*No Image  
Available*

Ref #	Part Number	Qty.	Description
NI	006017-000	1	LED WIRE 4.875

*No Image  
Available*

Ref #	Part Number	Qty.	Description
NI	006105-000	1	LED WIRE 11.50

*No Image  
Available*

Ref #	Part Number	Qty.	Description
NI	006019-000	1	LED WIRE 10.75

*No Image  
Available*

Ref #	Part Number	Qty.	Description
NI	006384-000	1	30 & 41 WIRE ASSEMBLY

*No Image  
Available*

<u>Ref #</u>	<u>Part Number</u>	<u>Qty.</u>	<u>Description</u>
NI	G50013595	1	LP CONNECTION SERVICE KIT