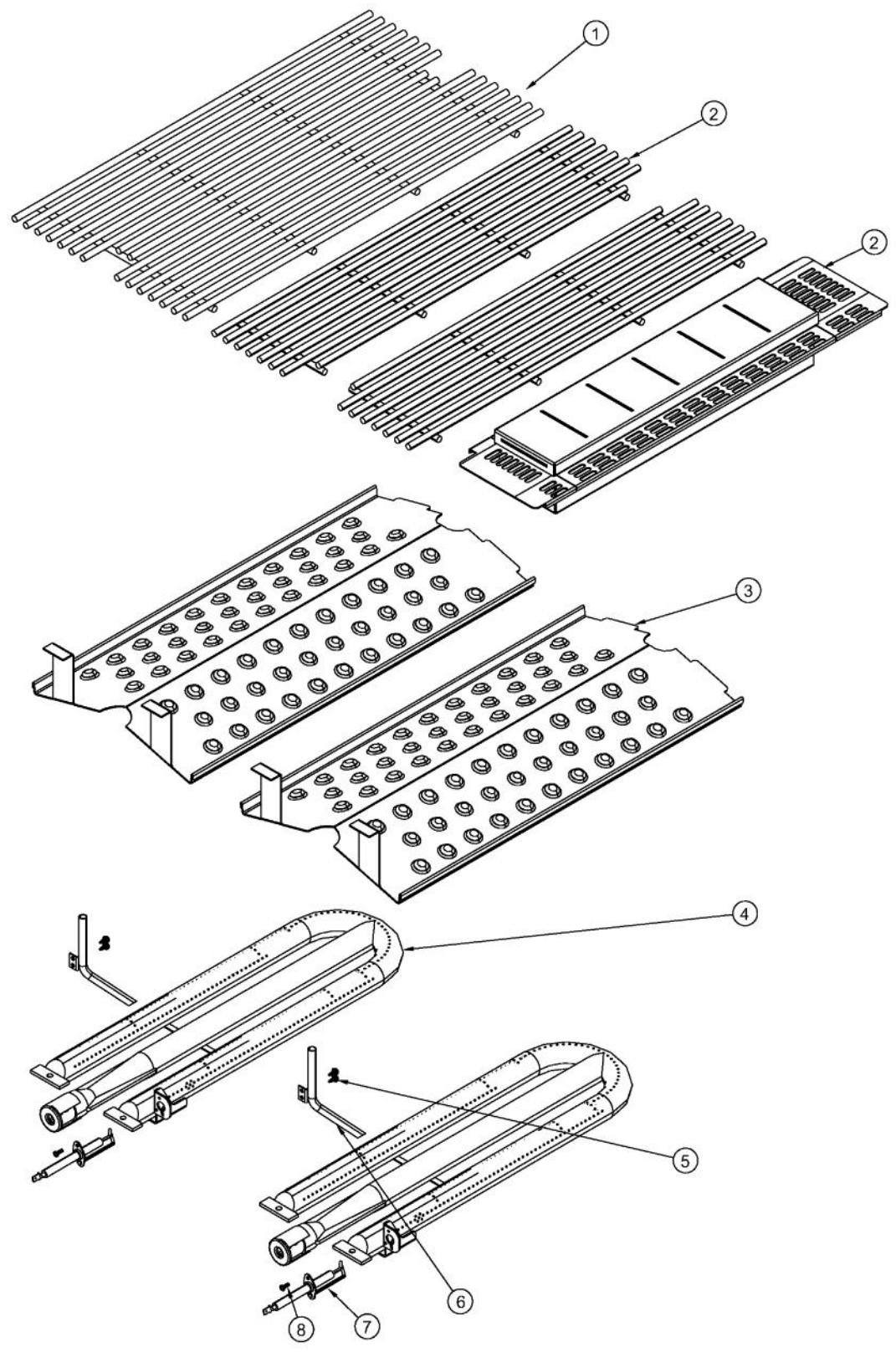
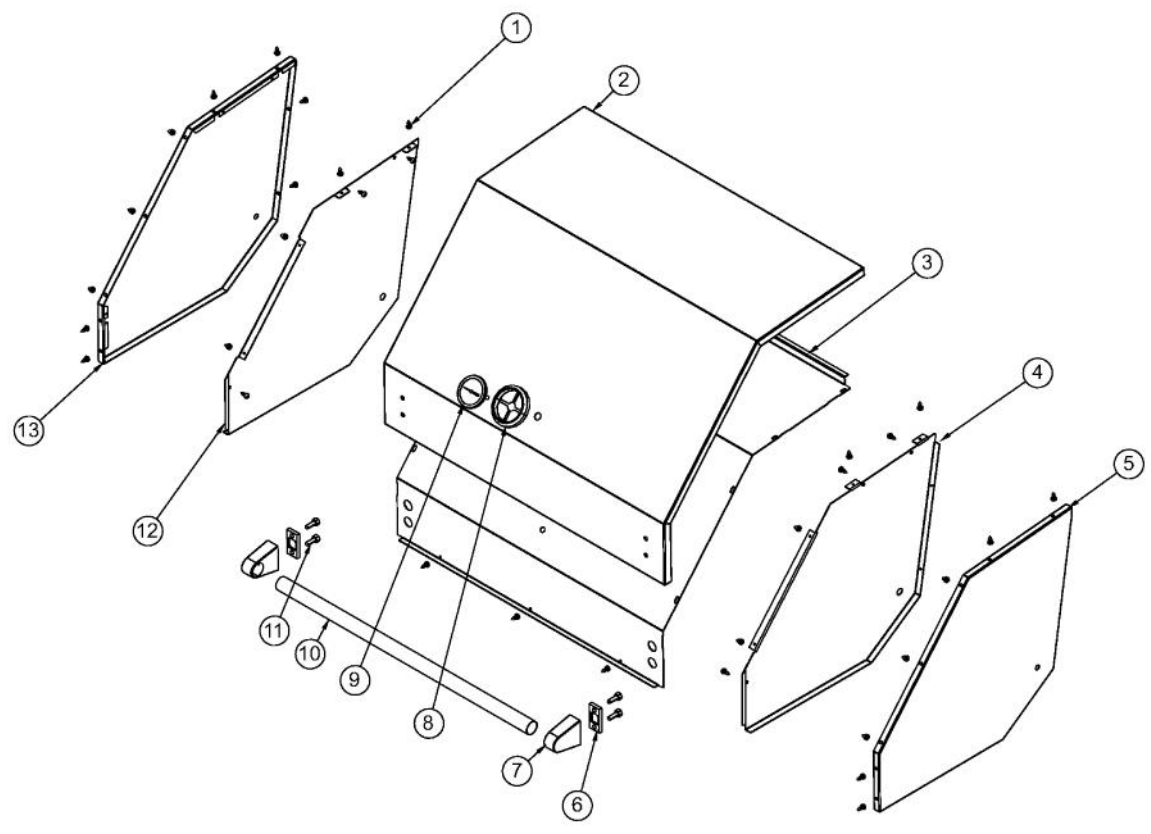


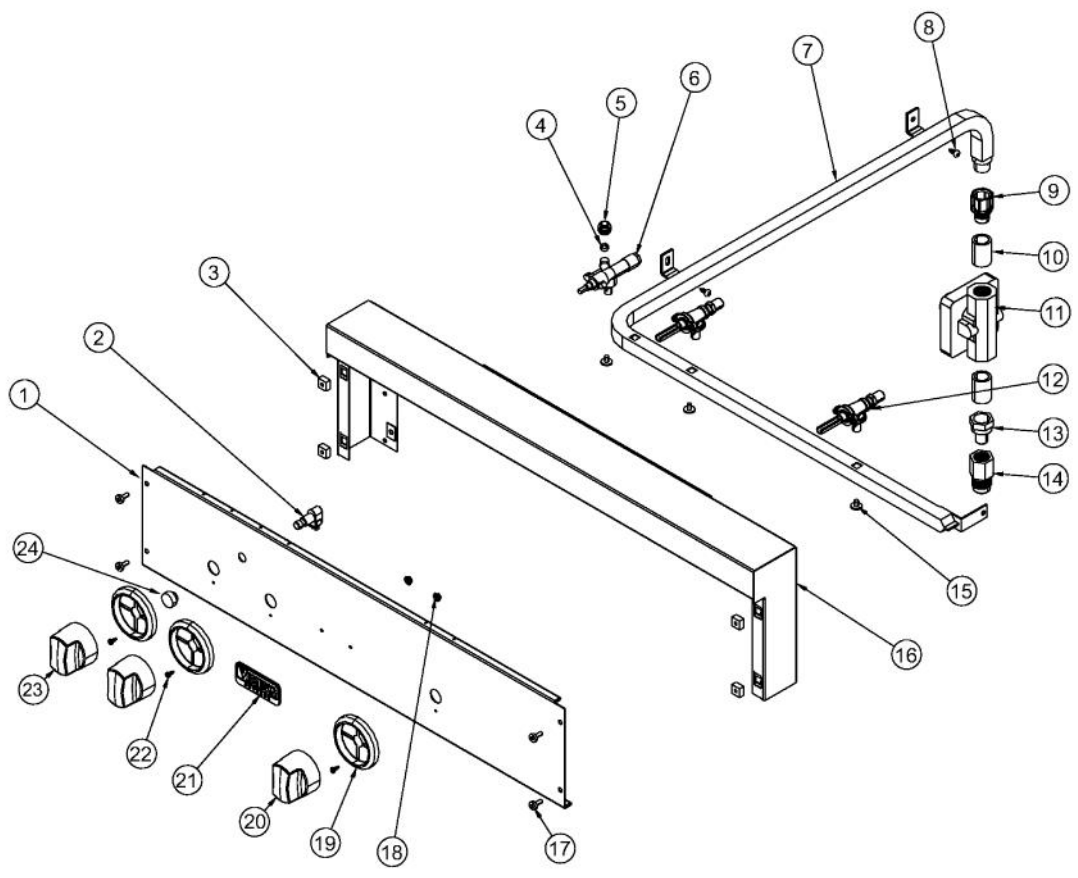
Ref #	Part Number	Qty.	Description
1	B20015516	1	GRILL FRAME 30
2	020051-000	53	SCR, DR, PHLP,PNH, 410SS, NPLT, 10-16 X 1/2
3	006010-000	2	GRILL BURNER REAR BRACKET
4	025544-000	1	BOX, BNR, BACK, 30
5	025543-000	2	BOX, BRN, BOT, 30
6	002671-000	2	RUBBER DOOR BUMPER
7	002354-000	2	GRILL PLUG PLATE
8	B2006305	2	HEAT SHIELD BRACKET
9	L1005399	1	REAR HEAT SHIELD 30`
10	003856-000	1	30 GRILL REAR TRIM
11	B20015513	1	GRILL BOX BACK 30
12	B2005203	1	GRILL BOX SIDE RH (PHASE 2)
13	L1005398	2	SIDE HEAT SHIELD
14	PD030050	4	10-24 CAGE NUT SS
15	PD020056	4	NO.10-24 X 1/2 PH.TR. M.S. SS
16	B20015510	1	GRILL BOX BOTTOM 30
17	B2005250	1	SPARK MODULE BRACKET (PHASE 2)
18	PD020166	2	NO.10 X 3/4 PAN PHIL. TEK. XSSX
19	025801-000	1	SUPPORT, GRL, FR, VGBQ3002RE2
20	PA020036	1	SPARK MODULE
21	PM010049	1	SPARK MODULE BATTERY PHASE II
22	B2005204	1	PANEL, GRL, LH
23	025542-000	1	BOX, BNR, FR, 30
24	006011-000	4	GRILL BURNER FRONT BRACKET



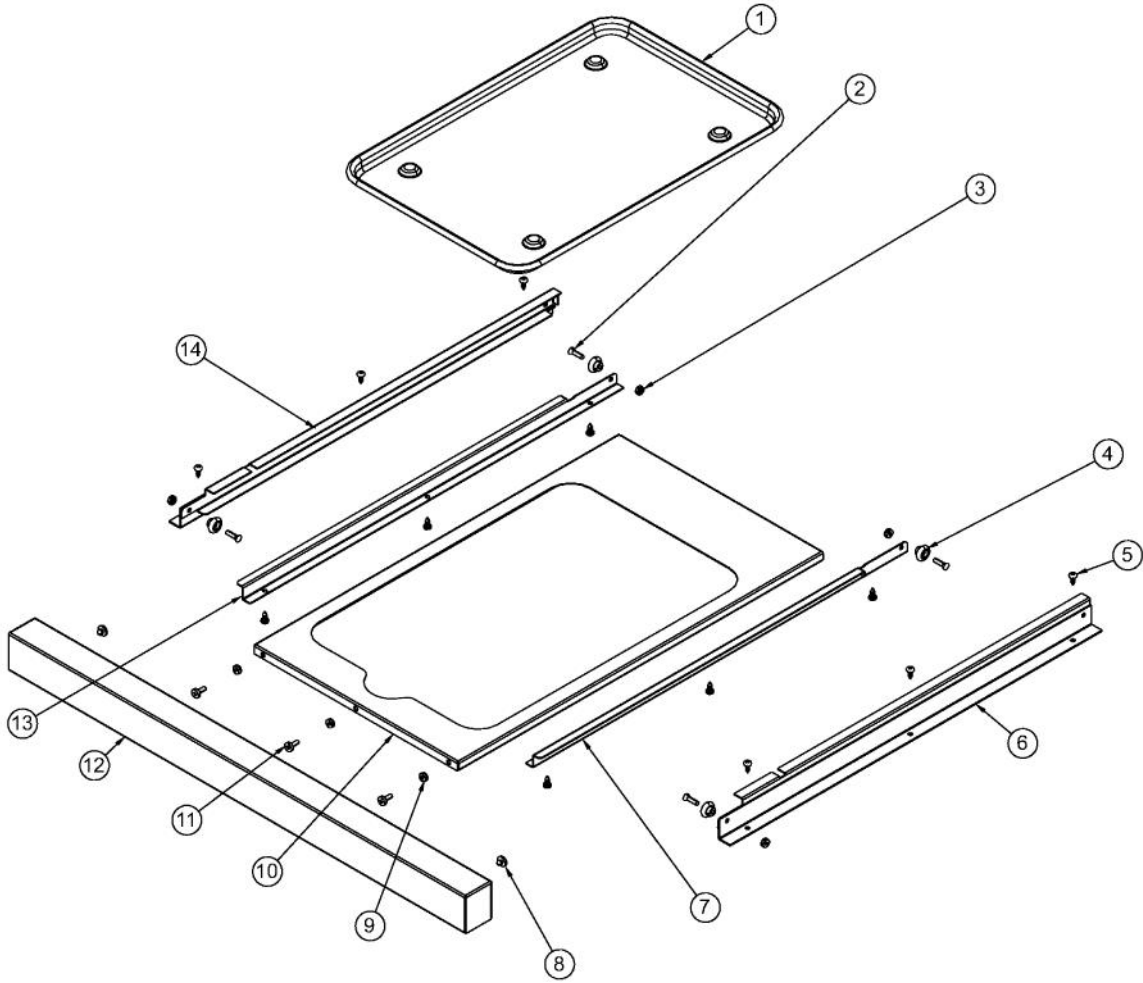
Ref #	Part Number	Qty.	Description
1	PA060052	2	GRILL COOKING GRATES
2	PA060053	2	HALF GRILL GRATE
3	027596-000	1	BOX, SMOKER ASM
4	024157-000	2	SHIELD, GRS
5	023000-000	2	BURNER, GRL, ASM, U
6	008026-000	4	NO.6-20 HEX WASHER SS SCREW
7	PB020114	2	FLASH TUBE (VGBQ3002T)
8	PB040288	2	SMOKER BURNER IGNITER
9	004706-000	2	MACHINE SCREW, 6-32 X 3/8, PAN HD, PHILLIPS



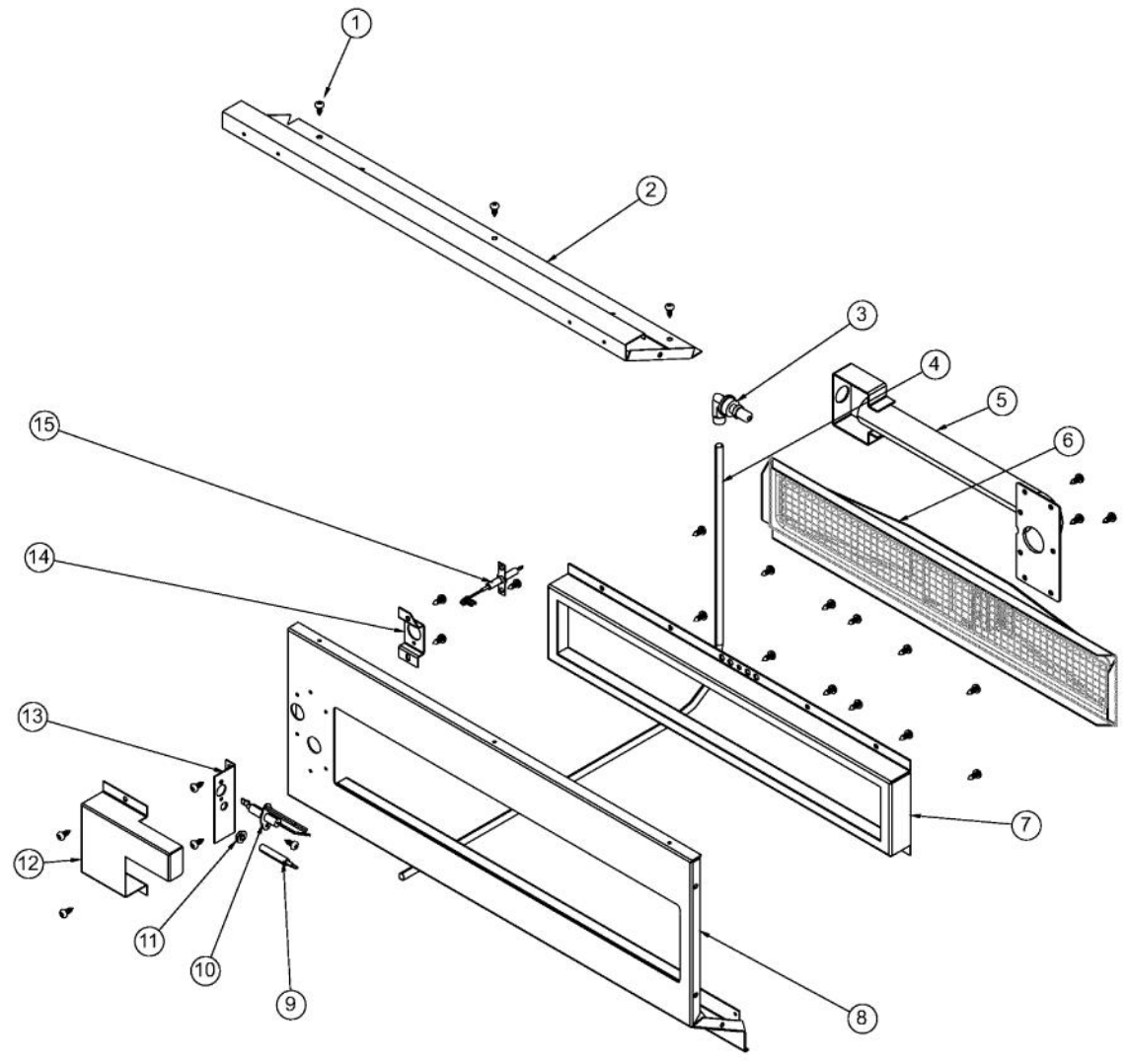
Ref #	Part Number	Qty.	Description
1	020051-000	35	SCR, DR, PHLP,PNH, 410SS, NPLT, 10-16 X 1/2
2	025802-000	1	SHIELD, CANOPY, FR
3	003635-000	1	30 CANOPY HEAT SHIELD
4	006667-000	1	GRILL CANOPY INSIDE LH
5	003630-000	1	GRILL CANOPY OUTSIDE RH
6	PD040010	2	DOOR HANDLE SPACER
7	000268-000	2	HANDLE END CAP ASSY
8	PB010304	1	KNOB BEZEL
9	020659-000	1	GAUGE, BMTL, TEMPERATURE
10	PE030041	1	DOOR HANDLE (CANOPY) XSSX (VGBQ30)
11	PD020069	4	CAP SCREW 1/4-20 X 3/4 SS
12	006666-000	1	GRILL CANOPY INSIDE RH
13	003632-000	1	GRILL CANOPY OUTSIDE LH



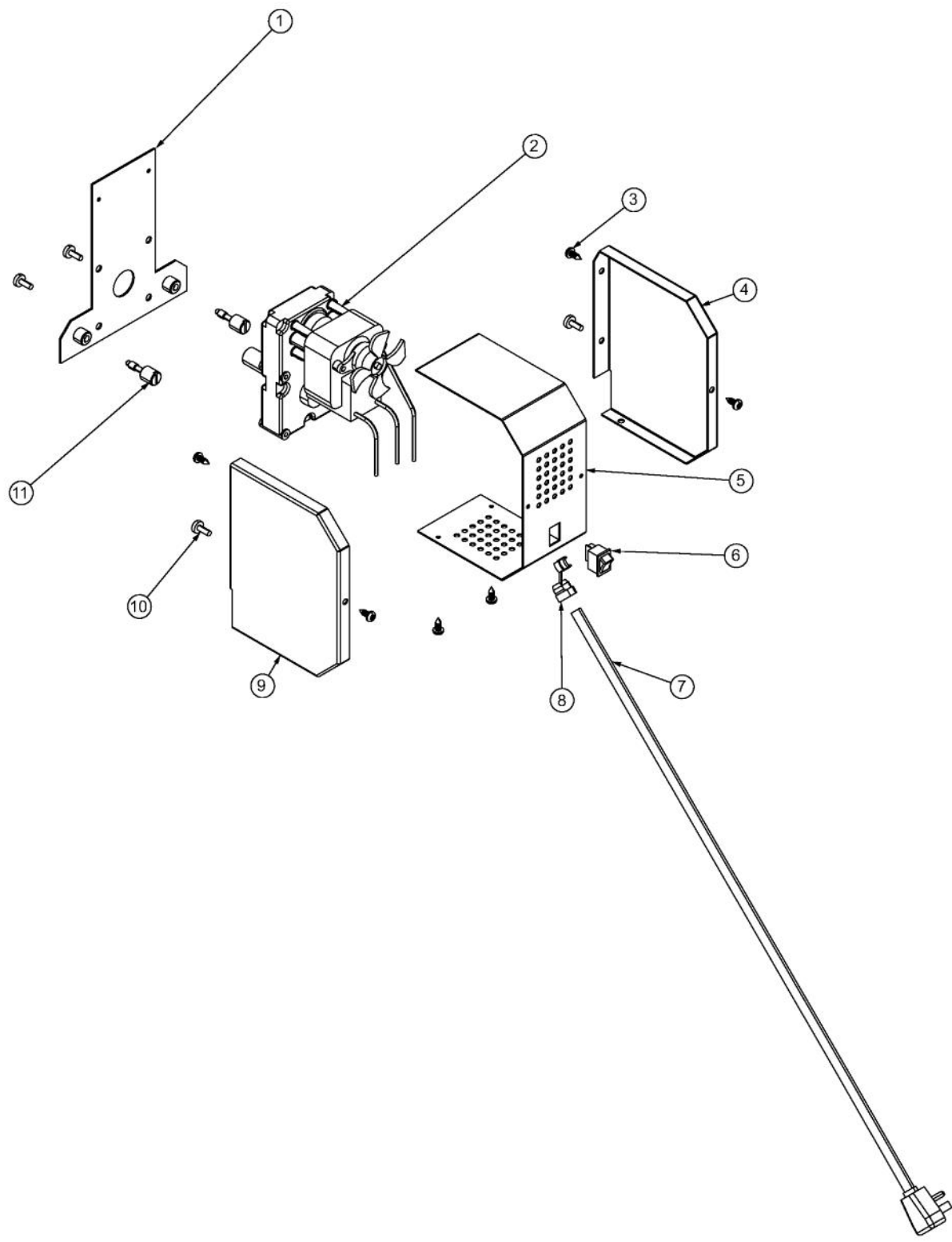
Ref #	Part Number	Qty.	Description
1	026015-000	1	CONTROL PANEL, VGBQ3002RT2
2	PE050063	1	SPARKER SWITCH
3	PD030050	4	10-24 CAGE NUT SS
4	PB040263	1	5/16 FERRULE
5	PB040228	1	FITTING BRASS COMPRESSION NUT
6	PB010191	1	I.R. SAFETY VALVE (PHASE II GRILLS)
7	025799-000	1	MANIFOLD, GRL, 30
8	020051-000	2	SCR, DR, PHLP,PNH, 410SS, NPLT, 10-16 X 1/2
9	023650-000	1	NIPPLE, ASM
10	PB040046	2	1/2 CLOSE NIPPLE (VGSO166)
11	PA070006	1	PRESSURE REGULATOR - NATURAL
11	PA070005	1	PRESSURE REG.(LP) RV47L-77-10.0
NI	G50013595	1	LP CONNECTION SERVICE KIT
12	014952-000	2	VALVE, GAS, ASM, U BNR
12	014953-000	2	VALVE, GAS, ASM, U BNR - LP
13	023652-000	1	COUPLER, ASM
14	PB020239	1	7/8 FLARE TO 1/2 FEMALE CONNECTOR
15	PD010012	5	VALVE BOLT 1/4-20 UNC-2B 5/16 M.S.
16	G3005223	1	LANDING LEDGE ASSY 30 (PHASE 2)
17	PD020056	4	NO.10-24 X 1/2 PH.TR. M.S. SS
18	PD030006	2	CAPPED WASHER PAL NUT
19	PB010304	3	KNOB BEZEL
20	003561-000	2	OUTDOOR GRILL KNOB
21	015009-000	1	OUTDOOR LOGO - 3 CHROME
22	020041-000	3	SCR, DR, PH, PNH, 410 SS, NPLT, 6-20 X 3/8
23	003563-000	1	ROTIS BURNER KNOB
24	PB010163	2	OVEN LIGHT SWITCH KNOB BK



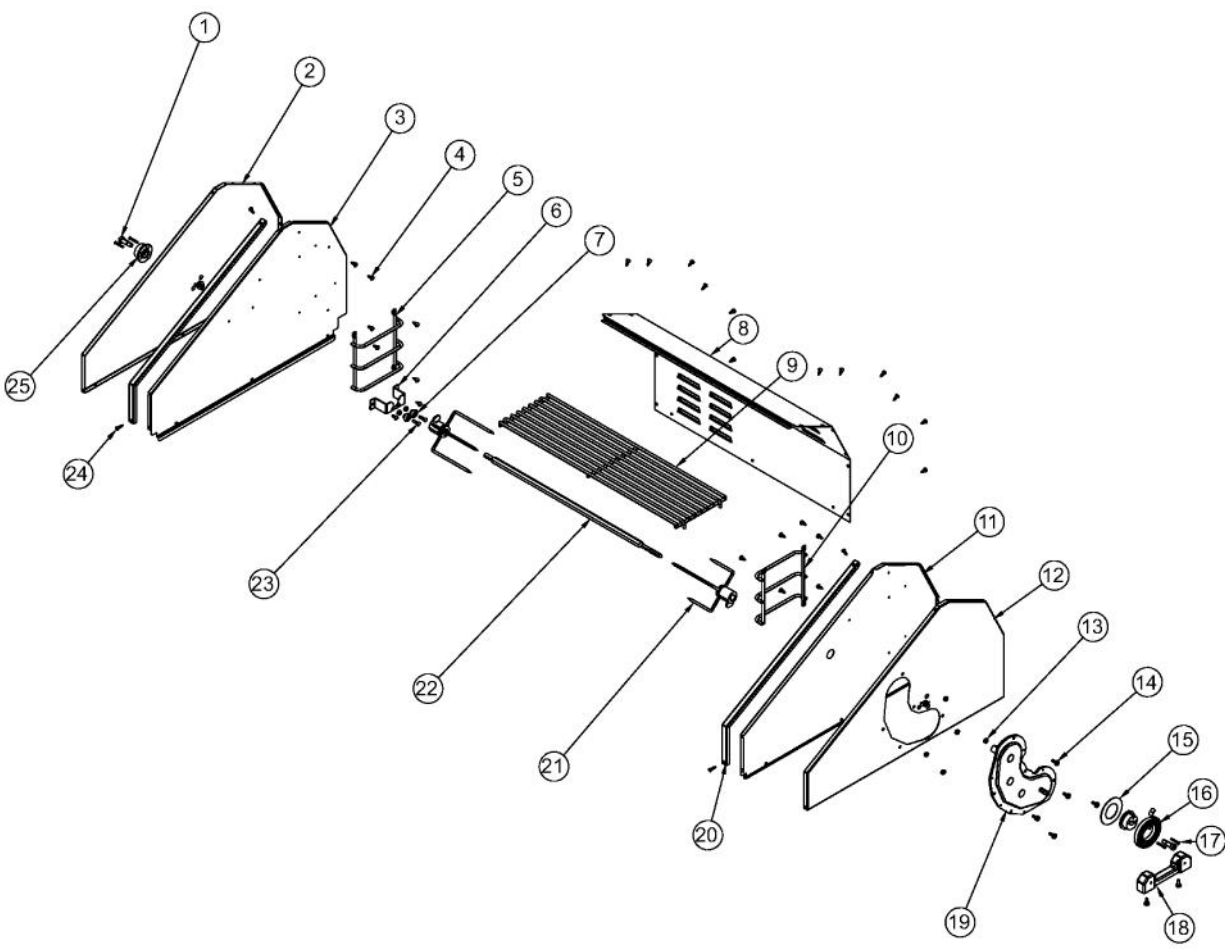
Ref #	Part Number	Qty.	Description
1	J2101749	1	GREASE PAN
2	PD020082	4	10 X 24 COUNTERSUNK S.S. SCREW
3	PD030044	4	10-24 KEPS NUT SS
4	PC020025	4	DRIP TRAY WHEEL
5	020051-000	12	SCR, DR, PHLP,PNH, 410SS, NPLT, 10-16 X 1/2
6	G3005215	1	DRIP TRAY SLIDE - RH
7	B2005316	1	DRIP TRAY RUNNER RH
8	PD040004	2	GROMMET BUMPER
9	PD030044	3	10-24 KEPS NUT SS
10	B2005312	1	DRIP TRAY 30 (PHASE 2)
11	PD020056	3	NO.10-24 X 1/2 PH.TR. M.S. SS
12	B3005315	1	30 INCH DRIP TRAY HANDLE (PHASE 2)
13	G3005214	1	DRIP TRAY SLIDE - LH
14	B2005317	1	DRIP TRAY RUNNER LH (PHASE 2)



Ref #	Part Number	Qty.	Description
1	020051-000	23	SCR, DR, PHLP,PNH, 410SS, NPLT, 10-16 X 1/2
2	E9105393	1	30`` FRONT HOUSING TOP
3	PB040124	1	90 DEG. ORIFICE FITTING
4	PB020096	1	48 5/16 S.S. FLEX TUBING REPL F2003505
5	PB050060	1	I/R VENTURI (PHASE 2 BBQ)
6	G3005289	1	BURNER,ASM,,ASM,IR,20
7	B2005347	1	INFRARED FRAME
8	G91015522	1	FRONT HOUSING ASSY (VGIQ3002RT)
9	PB010162	1	THERMOCOUPLE - BBQ GRILL W/ ROTIS
10	PB040160	1	WOK IGNITER
11	PD030048	1	THERMOCOUPLE NUT M08-VGBQ-8743300007
12	B20015402	1	I/R IGNITOR COVER LH
13	B20015403	1	IR IGNITOR BRACKET
14	B20015401	1	FLEXIBLE IGNITOR STANDOFF
15	PB040280	1	FLEXIBLE ROTISSERIE IGNITOR



Ref #	Part Number	Qty.	Description
1	002081-000	1	ROT MOTOR MOUNTING PLATE ASSY
2	PE070184	1	ROTISSERIE MOTOR
3	020051-000	6	SCR, DR, PHLP,PNH, 410SS, NPLT, 10-16 X 1/2
4	B2005285	1	PHASE II ROTIS BOX FRONT
5	B2005286	1	PHASE II ROTIS COVER
6	PE050051	1	ROTISSERIE SWITCH
7	PE070189	1	ELECTRICAL SUPPLY CORD - BBQ GRILL
8	PD040044	1	SNAP THRU BUSHING 1/4DIA CORD
9	B2005284	1	PHASE II ROTIS BOX FRONT
10	PD020056	4	NO.10-24 X 1/2 PH.TR. M.S. SS
11	PD010090	2	ROTISSERIE FASTENER KNOB



Ref #	Part Number	Qty.	Description
1	PD010043	2	5/16INCH SHOULDER BOLT (PHASE 2)
2	G5005257	1	OUTSIDE WINDSHIELD ASSY LH
3	B20015419	1	INSIDE WINDSHIELD LH
4	020051-000	26	SCR, DR, PHLP,PNH, 410SS, NPLT, 10-16 X 1/2
5	PB060113	1	WARMING RACK SUPPORT LH
6	B2005278	1	ROTISSERIE ROLLER BRACKET (PHASE 2)
7	PC020025	2	DRIP TRAY WHEEL
8	003652-000	1	30 GRILL REAR COVER
9	PB060057	1	WARMING RACK 30
10	PB060112	1	WARMING RACK SUPPORT RH
11	B20015418	1	INSIDE WINDSHIELD RH
12	G5005256	1	OUTSIDE WINDSHIELD ASSY RH
13	PD030044	7	10-24 KEPS NUT SS
14	PD020056	7	NO.10-24 X 1/2 PH.TR. M.S. SS
15	007818-000	1	RETAINER, CANOPY SPRING
16	007206-000	1	CANOPY, SPRING, ASSIST- LIGHT
17	006779-000	4	NO.6-32 X 1.0 SS FLAT HD SCREW
18	PB060055	1	ROTISSERIE MOUNT CASTING
19	PC070024	1	ROTIS. GEAR BOX ASSY
20	B20015574	2	GRILL WINDSHIELD TRIM
21	PB060058	2	SPIT FORK
22	PB060054	1	ROTIS SPIT ROD 30
23	PD020082	2	10 X 24 COUNTERSUNK S.S. SCREW
24	020037-000	4	SCR, DR, FCSKHP, 410 SS, NPLT, 8-18 X 3/4
25	005942-000	2	SPRING INDEX

*No Image
Available*

Ref #	Part Number	Qty.	Description
NI	G4006378	2	WIRE ASSY (VGBQ-T SERIES) 25
NI	G4006376	1	WIRE ASSY (VGBQ-T SERIES) 10
NI	G4006380	2	WIRE ASSY (VGBQ-T SERIES) 15
NI	025322-000	1	HARNESS, WIRE, ROTISSERIE

*No Image
Available*

Ref #	Part Number	Qty.	Description
NI	G50013595	1	LP CONNECTION SERVICE KIT