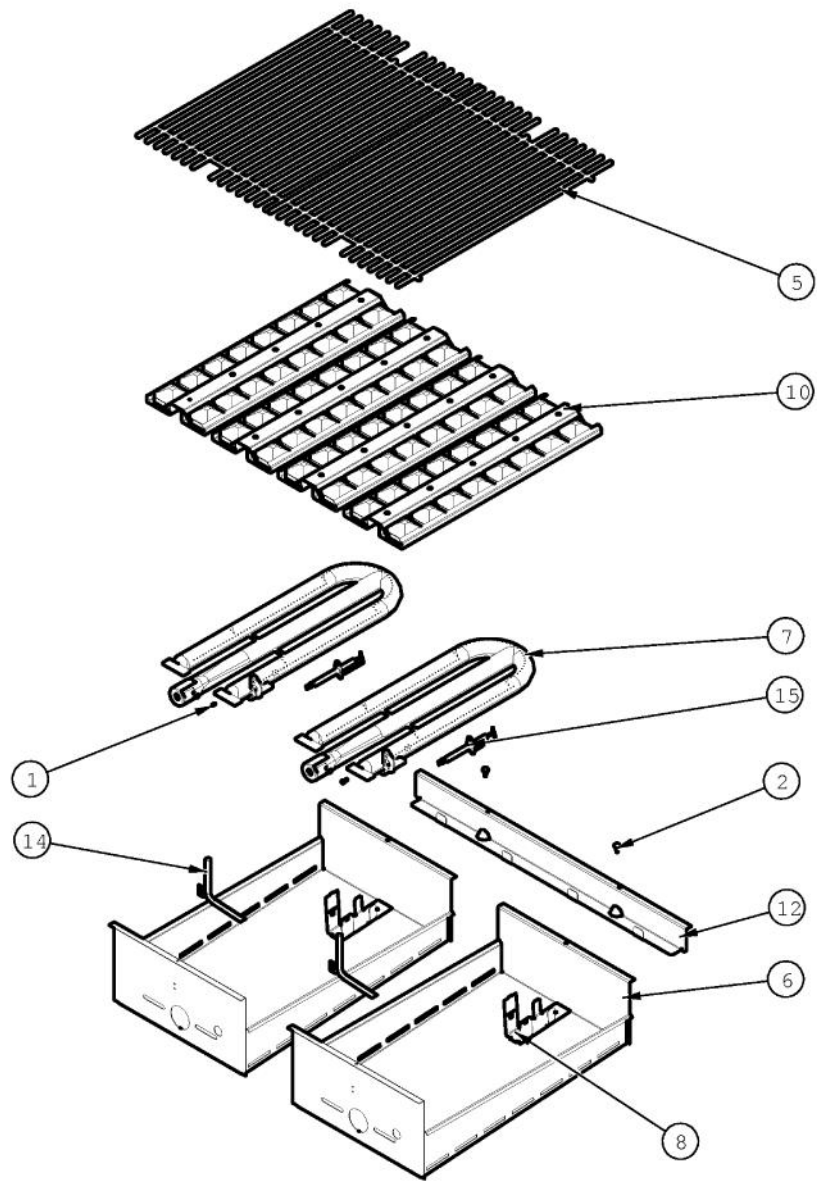
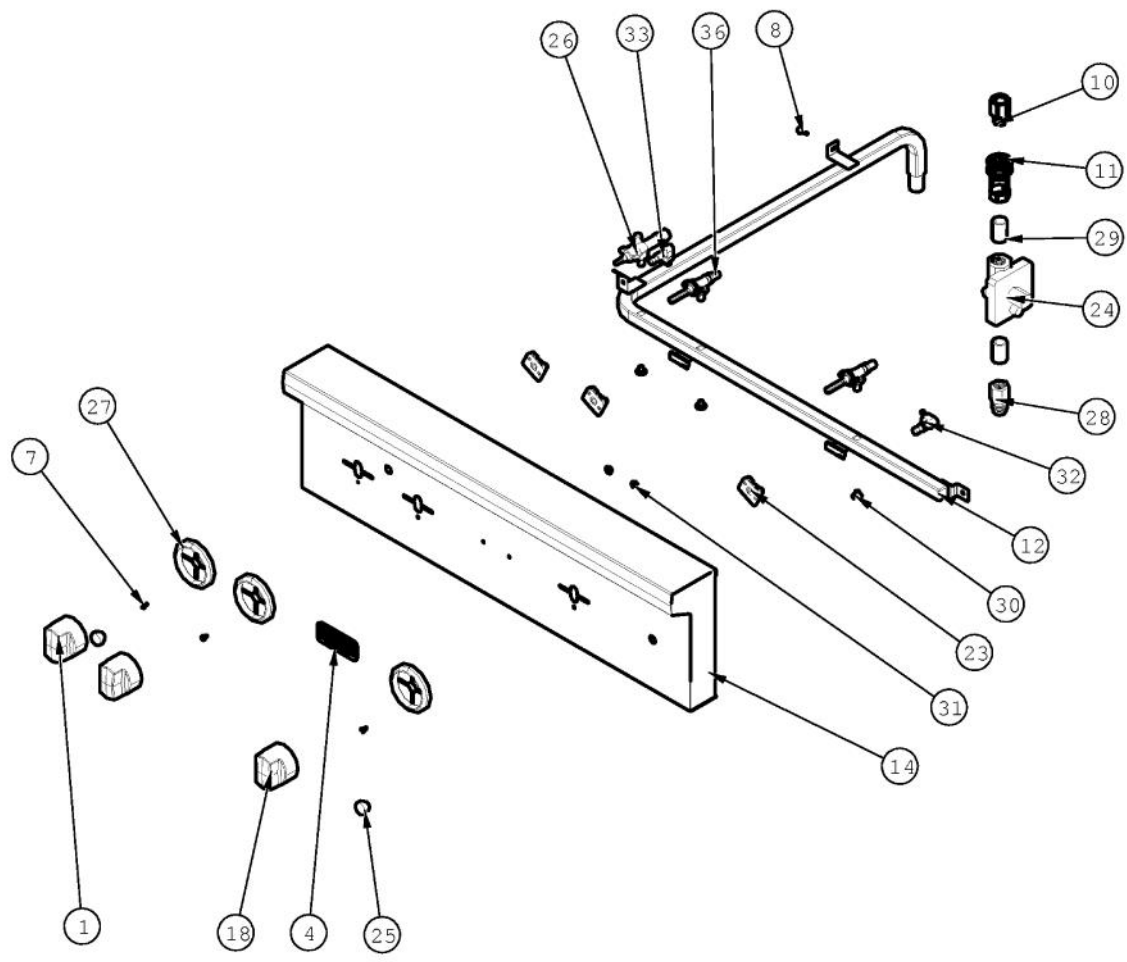


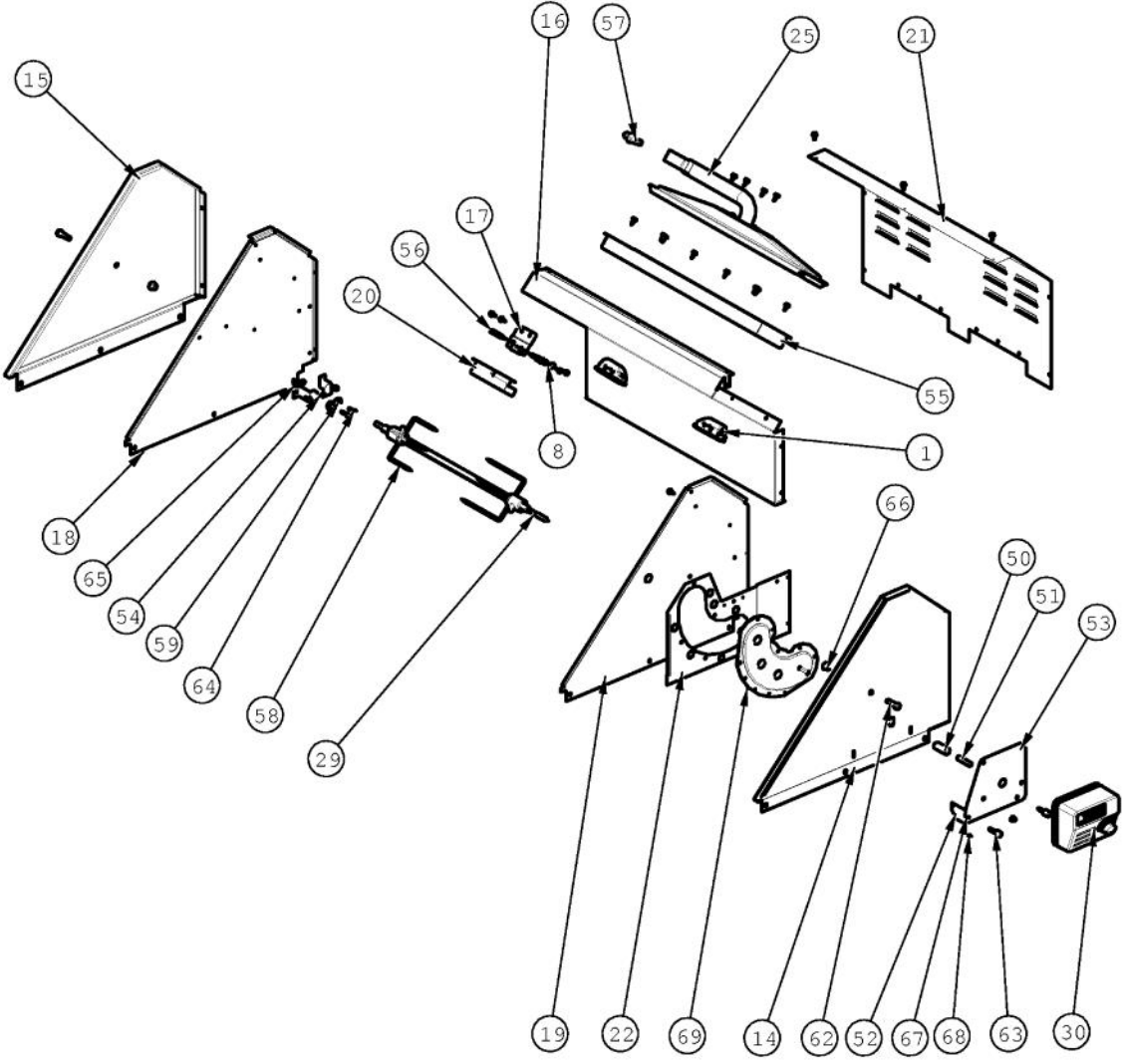
Ref #	Part Number	Qty.	Description
1	002671-000	2	RUBBER DOOR BUMPER
2	014143-000	2	SCR 10-12 A SHLD TRP 1/2 S ZN BLUE
3	020055-000	25	SCR, DR, HXWH, 410SS, NPLT, 10-18 X 1/2
4	029459-000	2	PANEL, LWR SIDE
5	029460-000	1	FRAME, GRL, TOP
6	031570-000	1	BRACKET, MOUNTING, MODULE
7	031849-000	1	BRACKET, BACK SUPPORT
8	035606-000	2	FLUE DIVERTER, 30
9	035648-000	1	PANEL, SUPPORT, HEAT SHIELD
10	035668-000	1	PANEL, FRONT, HEAT SHIELD
11	036024-000	1	SUPPORT, TRAY, BRIQUETTE, 30
12	PD950013	2	LATCH PANEL ACCESS



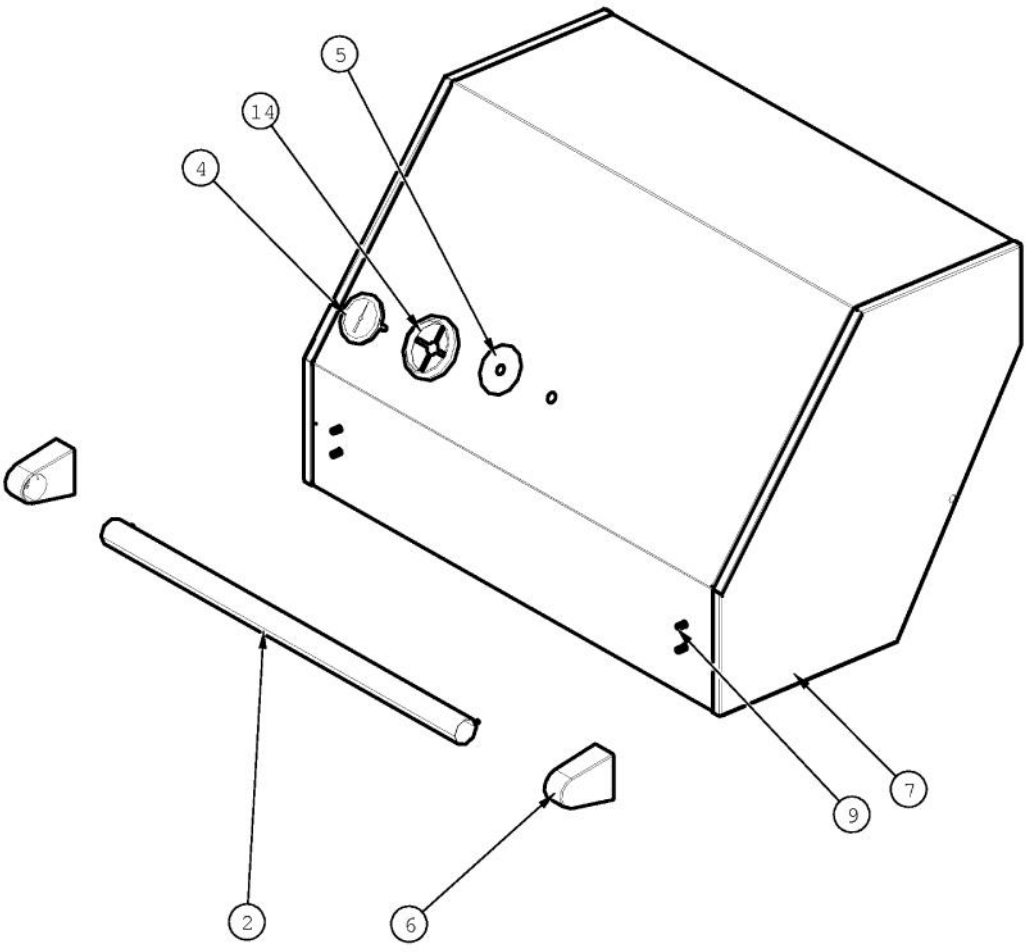
Ref #	Part Number	Qty.	Description
1	004706-000	4	MACHINE SCREW, 6-32 X 3/8, PAN HD, PHILLIPS
2	020055-000	4	SCR, DR, HXWH, 410SS, NPLT, 10-18 X 1/2
5	029434-000	2	GRATE, BQ GRILL
6	029461-000	2	BOX, U BURNER, 30
7	029479-000	2	U-BURNER, BQ ASM
8	032239-000	1	BRACKET, REAR GRILL BURNER
10	032370-000	4	TRAY, CRMC, BRIQUETTE, ASM
12	036024-000	1	SUPPORT, TRAY, BRIQUETTE, 30
14	PB020114	1	FLASH TUBE (VGBQ3002T)
15	PB040288	2	SMOKER BURNER IGNITER



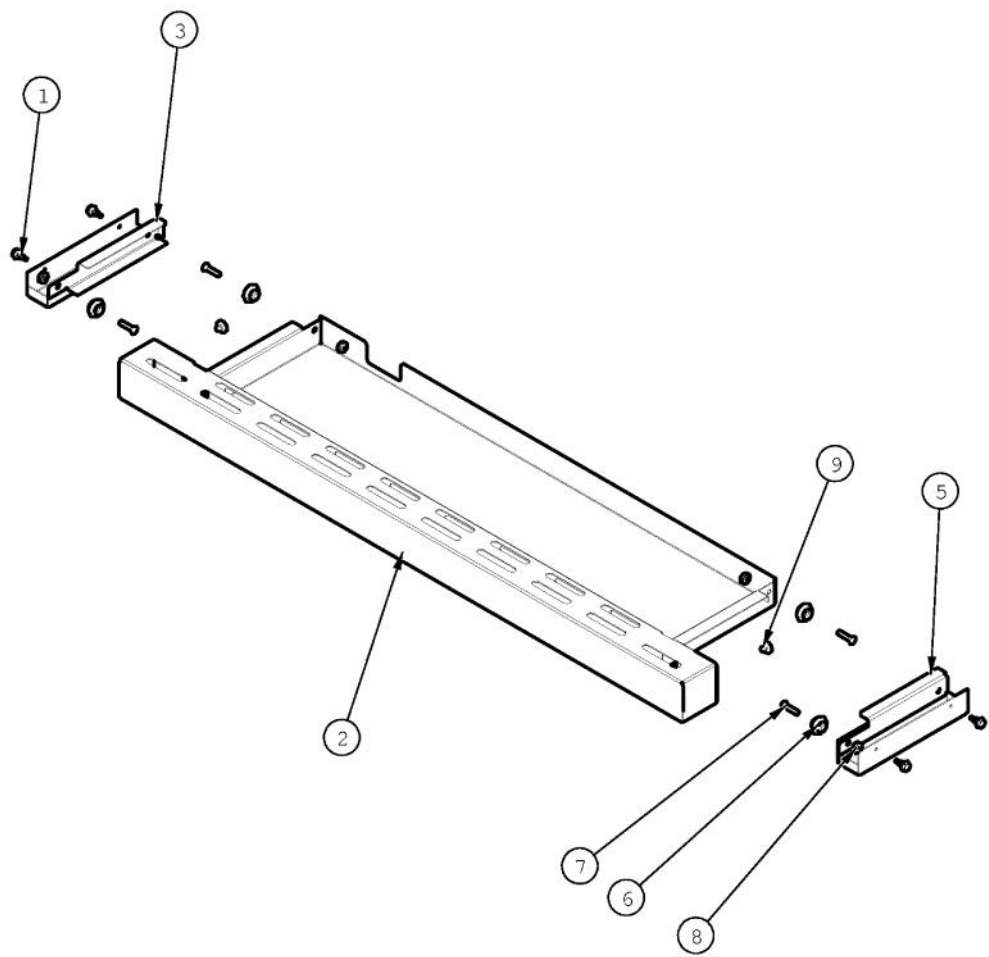
Ref #	Part Number	Qty.	Description
1	003563-000	1	ROTIS BURNER KNOB
4	015009-000	1	OUTDOOR LOGO - 3 CHROME
7	020041-000	3	SCR, DR, PH, PNH, 410 SS, NPLT, 6-20 X 3/8
8	020055-000	3	SCR, DR, HXWH, 410SS, NPLT, 10-18 X 1/2
10	023650-000	1	NIPPLE, ASM
11	023652-000	1	COUPLER, ASM
12	029468-000	1	MANIFOLD, BQ13002, NAT ASM
14	032728-2384	1	PANEL, CNTRL WELD W/GRAPHICS, BQ13002R
18	003561-000	2	OUTDOOR GRILL KNOB
23	PA020045	3	IGNITOR SWITCH
24	PA070005	1	PRESSURE REG.(LP) RV47L-77-10.0
24	PA070006	1	PRESSURE REGULATOR - NATURAL
25	PB010163	1	OVEN LIGHT SWITCH KNOB BK
26	PB010220	1	I.R. SAFETY VALVE LP
27	PB010304	3	KNOB BEZEL
28	PB020239	1	7/8 FLARE TO 1/2 FEMALE CONNECTOR
29	PB040046	2	1/2 CLOSE NIPPLE (VGSO166)
30	PD010012	3	VALVE BOLT 1/4-20 UNC-2B 5/16 M.S.
31	PD030006	2	CAPPED WASHER PAL NUT
32	PE050019	1	OVEN LIGHT SWITCH (VGSO166) 90-DEG.
33	PE050063	1	SPARKER SWITCH
36	014953-000	2	VALVE, GAS, ASM, U BNR - LP
36	014952-000	2	VALVE, GAS, ASM, U BNR
NI	PB020227	1	HIGH PRESSURE LP HOSE
NI	PA010138	1	CYLINDER CONNECTION
NI	PA070007	1	LP TANK REGULATOR (VGBQ)
NI	PA020047	1	INVENSYS 0+4 RE-IGNITION SPARK MODULE



Ref #	Part Number	Qty.	Description
1	034082-000	2	120V HALOGEN LIGHT ASM
8	015357-000	1	IGNITOR, W/WIRE
14	029451-000	1	WINDSHIELD, BQ, OS, RH
15	029452-000	1	WINDSHIELD, BQ, OS, LH
16	029453-000	1	BACKPLATE, BQ, INT
17	029454-000	1	BRACKET, ROTIS IGNITOR, MTG
18	029455-000	1	WINDSHIELD, BQ, IS, LH
19	029456-000	1	WINDSHIELD, BQ, IS, RH
20	029457-000	1	COVER, ROTIS IGNITOR
21	029462-000	1	PANEL, REAR BQ
22	029463-000	1	SUPPORT, GEAR
25	G3005289	1	BURNER,ASM,,ASM,IR,20
29	PB060054	1	ROTIS SPIT ROD 30
30	032461-000	1	MOTOR, ROTIS
50	035020-000	1	STUD, COUPLING, ROTIS ASM
52	035056-000	1	SUPPORT BRACKET, MTG, RTSR
53	035368-000	1	SUPPORT BRACKET, MTG, RTSR MTR (IF BUILT BEFORE 4/23/12 ORDER 038269-000)
NI	038269-000	1	ROTIS MOUNTING BRACKET KIT
NI	037377-000	1	ADAPTER, HEX, ROTISSERIE MOTOR ADAPTER
54	037589-000	1	ROLLER, BRKT, ROTIS, ASM
55	B2005347	1	INFRARED FRAME
56	PB010162	1	THERMOCOUPLE - BBQ GRILL W/ ROTIS
57	PB050060	1	I/R VENTURI (PHASE 2 BBQ)
58	032881-000	2	FORK, RTSR
62	034607-000	2	FASTENER, BOLT, 5/16 - 1-1/2
63	PD010090	2	ROTIS FASTENER KNOB
66	PD030063	2	10-C05-HC 5/16-18 FLANGE NUT
67	PD030064	2	CAPTURE NUT 1/4 NO.20
68	PD040004	2	GROMMET BUMPER
69	PC070024	1	ROTIS. GEAR BOX ASSY



Ref #	Part Number	Qty.	Description
2	019277-000	1	DOOR HANDLE, 24
4	020659-000	1	GAUGE, BMTL, TEMPERATURE
5	026724-000	1	SPACER, WSHR
6	026965-000	2	END CAP, ASM, DOOR HANDLE
7	035864-000	1	HOOD, BQ, 30 ASM
9	035647-000	4	FASTENER, BOLT, HXH, SST
14	PB010304	1	KNOB BEZEL
NI	036547-000	2	GROMMET, RECTANGLE RUBBER (USED ON CANOPY)



Ref #	Part Number	Qty.	Description
1	020055-000	4	SCR, DR, HXWH, 410SS, NPLT, 10-18 X 1/2
2	031548-000	1	DRIP TRAY ASM, BQ, 30
3	031555-000	1	DRIP TRAY GUIDE, LH
5	031554-000	1	DRIP TRAY GUIDE, RH
6	PC020025	4	DRIP TRAY WHEEL
7	PD020082	4	10 X 24 COUNTERSUNK S.S. SCREW
8	PD030044	4	10-24 KEPS NUT SS
9	PD040004	2	GROMMET BUMPER

*No Image
Available*

Ref #	Part Number	Qty.	Description
NI	035599-000	1	HARNESS, WIRE, GRILL 33002
NI	035561-000	1	WIRE, IGNITOR, GRILL 8
NI	035565-000	1	WIRE, IGNITOR, GRILL 12
NI	035631-000	1	HARNESS, WIRE, ROTIS, 33002