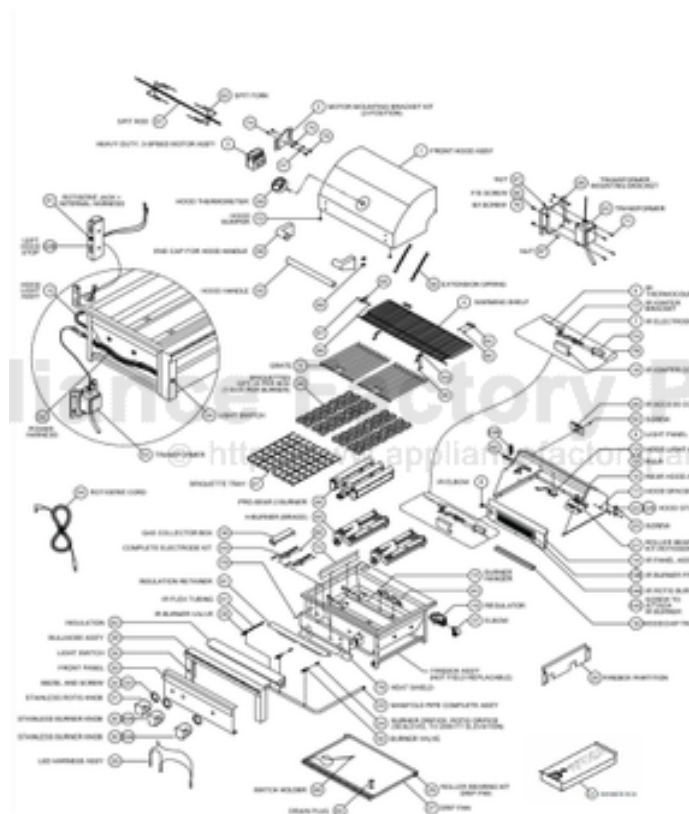


This Owner's Manual is provided and hosted by [Appliance Factory Parts](#).



VIKING VGQI5300 Owner's Manual

[Shop genuine replacement parts for VIKING VGQI5300](#)



[Find Your VIKING Range Hoods Parts - Select From 411 Models](#)

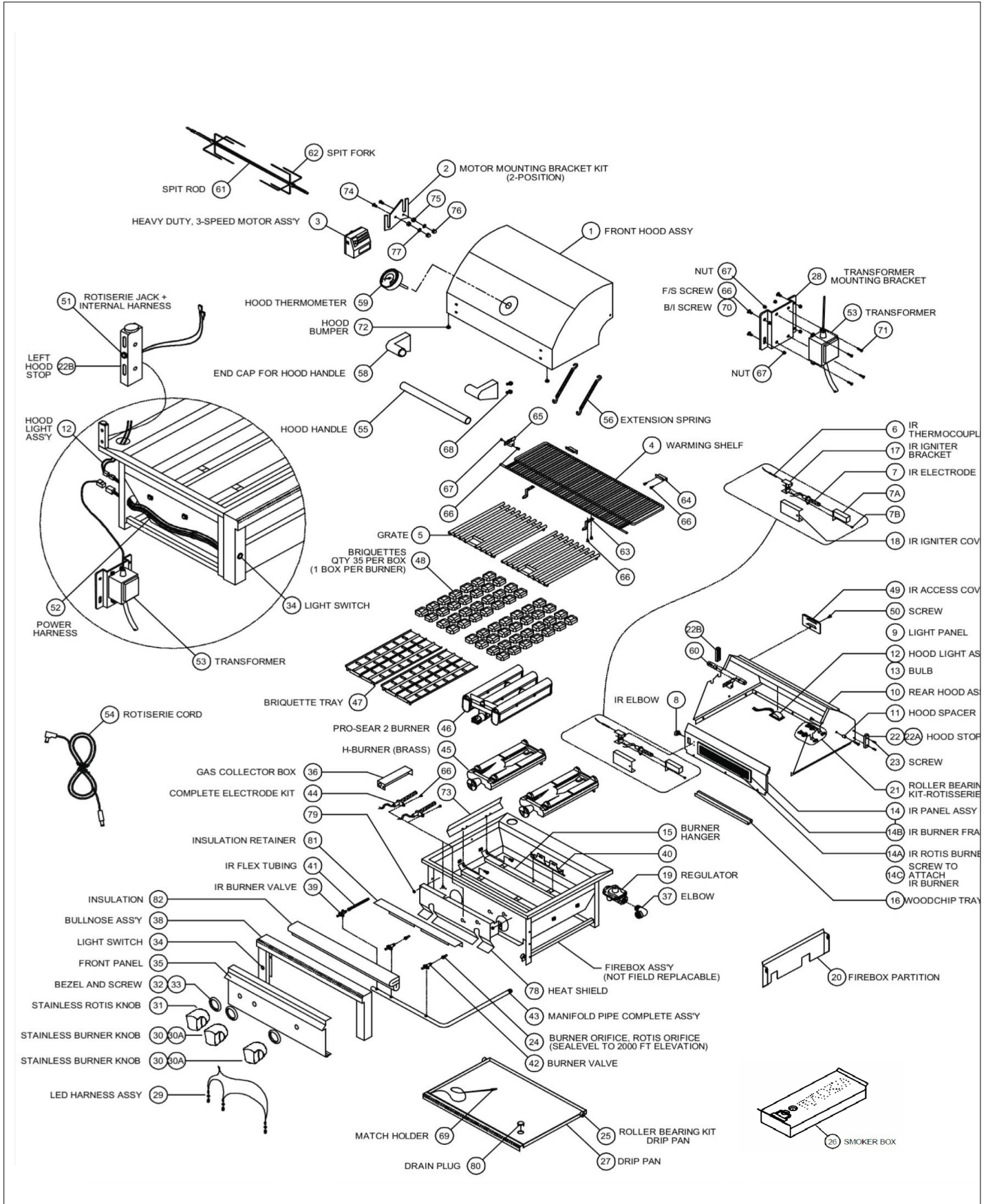
----- Manual continues below -----

VQGI5300

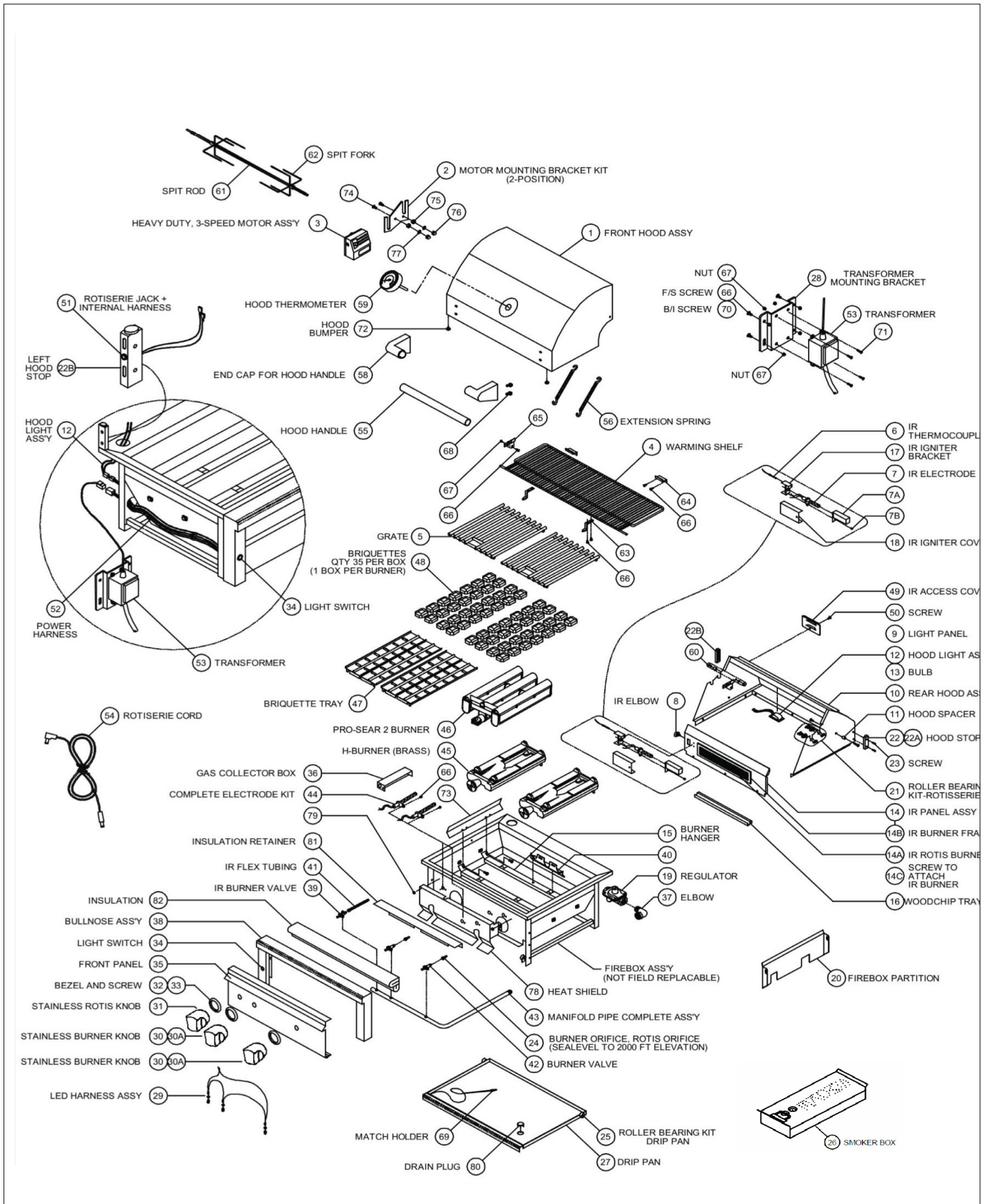
30" BUILT-IN GRILL

VQGI5300 Built-in Grill	1
Appendix A:Pages Index	A
Appendix B:Parts Index	B

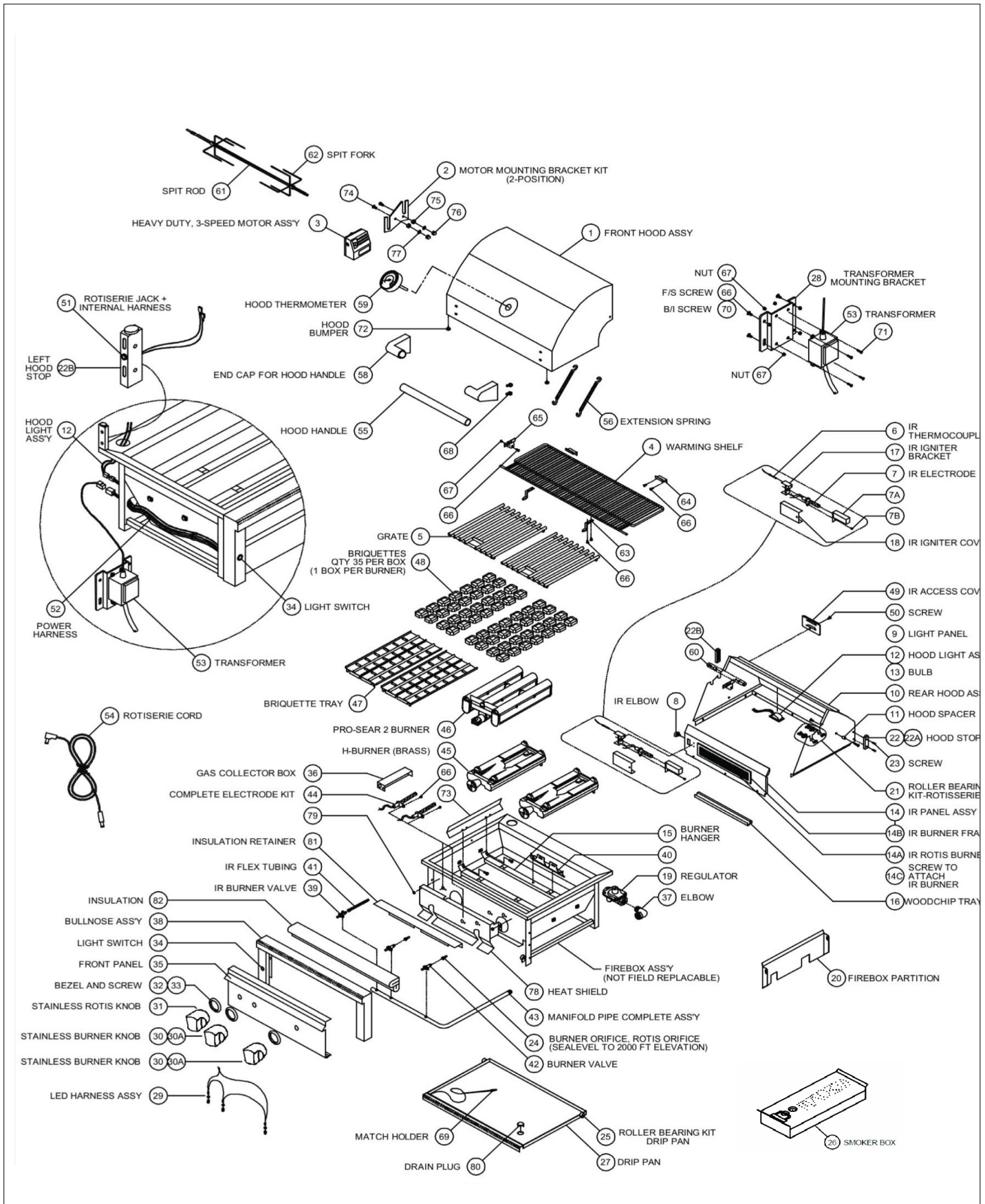
VQGI5300 Built-in Grill



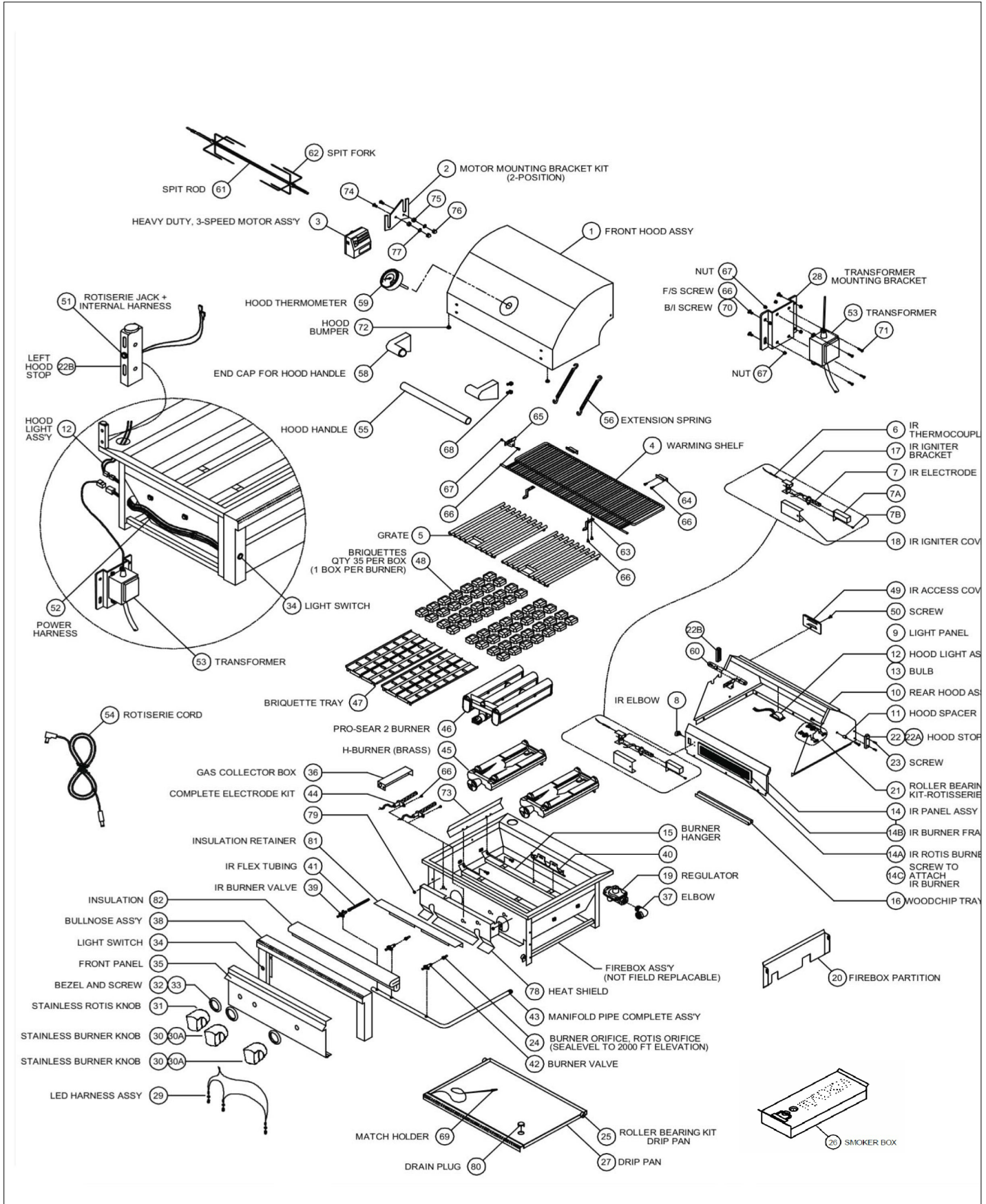
Item	Part No.	Name	Qty	Uom	NOTES
1	061953-000	FRONT HOOD ASSY, 30"		EA	
2	061996-000	MOTOR MOUNTING BRACKET KIT, ALL PRO		EA	
3	061992-000	MOTOR ASSY, HEAVY DUTY 3 SPEED		EA	
4	061811-000	WARMING SHELF, PRO 30"		EA	
5	061780-000	GRATE- 13 1/2" X 21"	2	EA	
6	061778-000	IR THERMOCOUPLE		EA	
7	061867-000	IR ELECTRODE, HOT SURFACE (SEE ALSO #73)		EA	
7A	061871-000	GAS COLLECTOR BOX, IR ROTIS		EA	
7B	061769-000	SCREW, #6-32 x 1/4 PH. PAN HD		EA	
8	061805-000	IR BRASS ELBOW, 7/16-20 MALE THREAD		EA	
9	061820-000	LIGHT PANEL/REAR HOOD LINER, 30"		EA	
10	061945-000	REAR HOOD ASSY, PRO 30"		EA	
11	062428-000	HOOD SPACER, UNIVERSAL		EA	
12	061964-000	HOOD LIGHT ASSY, SINGLE W/10W BULB		EA	
13	061810-000	BULB, REPLACEMENT, 10W HALOGEN		EA	
NI	061827-000	GLASS REPLACEMENT COVER W/CLIP		EA	
14	061949-000	IR PANEL ASSY, 30" (INCLUDES BURNER)		EA	
14A	061861-000	IR ROTIS. BURNER ONLY (MEDIUM-21 IN.)		EA	
14B	061863-000	IR BURNER FRAME ONLY (MEDIUM-21 IN.)		EA	
14C	061853-000	SCREW, #8-32 X 5/16 PH. FLAT HD		EA	
15	061838-000	BURNER HANGER, PRO 30"		EA	
16	061750-000	WOODCHIP TRAY (30", 54")		EA	
17	061869-000	IR IGNITER BRACKET, PRO		EA	
18	061876-000	IR IGNITER COVER, PRO 30"		EA	
19	061789-000	REGULATOR 4/11 N/G ONLY		EA	



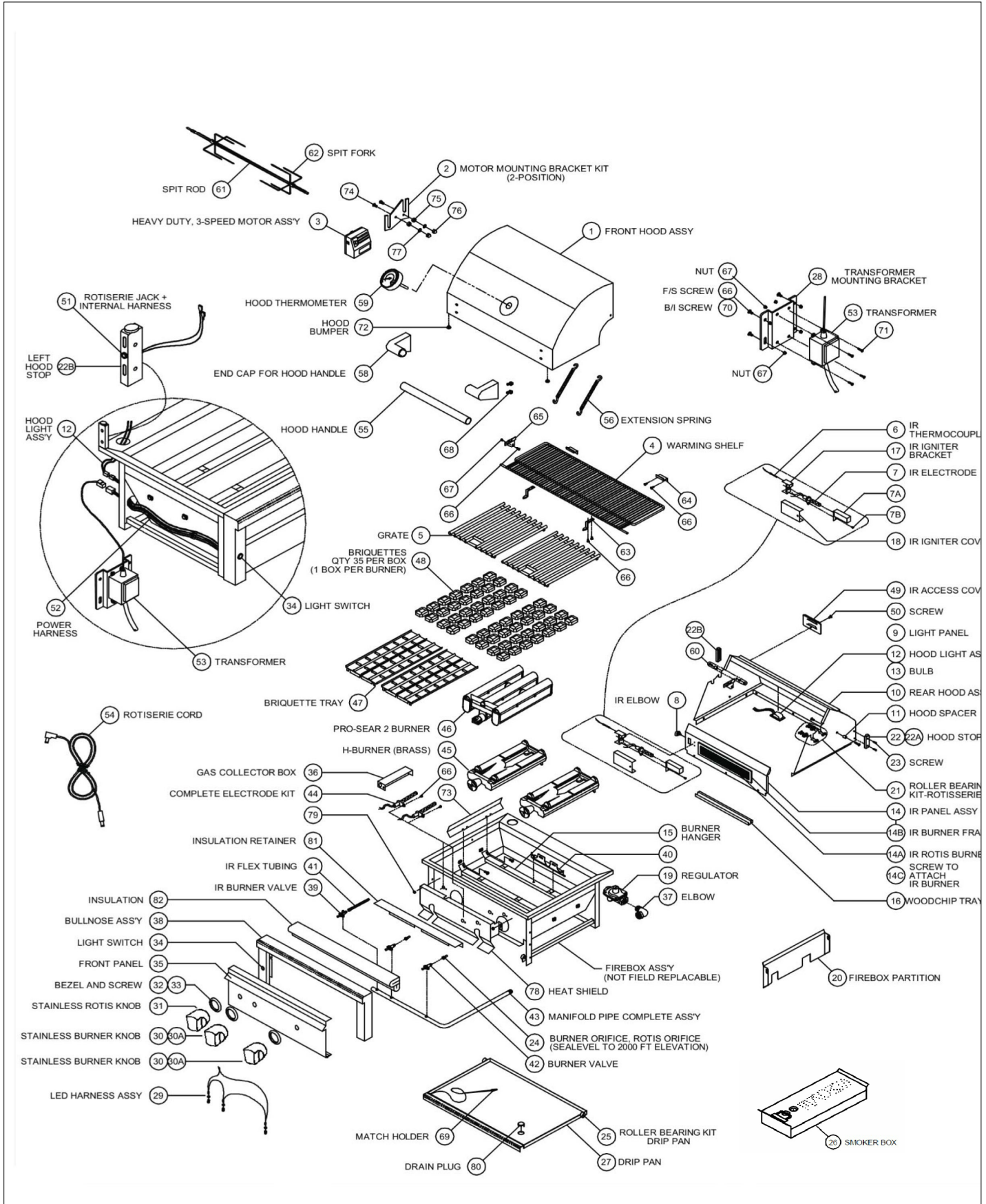
Item	Part No.	Name	Qty	Uom	NOTES
Not Shown	061759-000	REGULATOR W/30" HOSE DOUBLE STAGE-LP		EA	
20	061900-000	FIRBOX PARTITION, PROSEAR 30", 42", 54"		EA	
21	061994-000	ROLLER BEARING KIT- ROTISSERIE (2 PARTS EA)		EA	
22	061834-000	HOOD STOP, RIGHT, ALL PRO		EA	
22A	061836-000	BUMPER FOR HOOD STOP, .750 DIA		EA	
22B	061883-000	HOOD STOP, LEFT, ALL PRO		EA	
23	061835-000	SCREW/HOOD STOP- #8-32 x 1" PH TRUSS HD		EA	
24	062012-000	COMPLETE ORIFICE FIELD KIT- LP TO NG		EA	
Not Shown	062011-000	COMPLETE ORIFICE FIELD KIT- NG TO LP		EA	
Not Shown	061784-000	ORIFICE, BURNER, NG (#41 LONG)		EA	
Not Shown	061783-000	ORIFICE, BURNER, LP (#53 LONG)		EA	
Not Shown	061754-000	ORIFICE, BURNER, NG (#44 SHORT) PROSEAR		EA	
Not Shown	061757-000	ORIFICE, BURNER, LP (#54 SHORT) PROSEAR		EA	
Not Shown	061755-000	ORIFICE, IR ROTIS., NG (#50 SHORT)		EA	
Not Shown	061758-000	ORIFICE, IR ROTIS., LP (#57 SHORT)		EA	
25	061995-000	ROLLER BEARING KIT- DRIP PAN (2 PARTS EA)		EA	
26	061905-000	SMOKER SET		EA	
27	062025-000	DRIP PAN, PRO 30"		EA	
28	061875-000	TRANSFORMER MOUNTING BRKT B/I & F/S		EA	
29	061960-000	LED HARNESS ASSY, 30-IR		EA	
Not Shown	061841-000	LED HOLDER		EA	
30	061916-000	KNOB, BURNER, STAINLESS		EA	
30A	061918-000	KNOB, PROSEAR, STAINLESS		EA	
31	061917-000	KNOB, ROTIS, STAINLESS		EA	
32	061915-000	BEZEL		EA	



Item	Part No.	Name	Qty	Uom	NOTES
33	061904-000	BEZEL SCREW, #6-32 x 1/8 PH PAN		EA	
34	061878-000	LIGHT SWITCH + HARNESS, BLUE LIGHTED		EA	
35	061975-000	FRONT PANEL, 30"		EA	
36	061868-000	GAS COLLECTOR BOX, H-BURNER		EA	
37	061752-000	ELBOW, STREET, 1/2" 90 DEGREE-NG ONLY		EA	
Not Shown	061760-000	ELBOW, 3/8" FLARE TO 1/2" FIP-LP ONLY		EA	
38	061967-000	BULLNOSE ASSY, PRO 30"		EA	
39	061802-000	IR BURNER VALVE W/ MICROSWITCH		EA	
40	061884-000	BURNER SUPPORT, PROSEAR-2 30, 42, 54		EA	
41	061804-000	FLEX HOSE, 9MM X 38" W/ 7/16 FITTINGS		EA	
42	061881-000	MAIN BURNER VALVE W/MICROSWITCH		EA	
Not Shown	061859-000	MICROSWITCH REPLACEMENT FOR VALVE		EA	
43	061935-000	MANIFOLD ASSY W/VALVES, 30" LP		EA	
Not Shown	061937-000	MANIFOLD ASSY W/VALVES, 30" NG		EA	
Not Shown	061934-000	MANIFOLD ASSY W/VALVES, 30" LP PROSEAR		EA	
Not Shown	061936-000	MANIFOLD ASSY W/VALVES, 30" NG PROSEAR		EA	
44	062000-000	COMPLETE ELECTRODE KIT, 30" IR		EA	
45	061787-000	H-BURNER (BRASS)		EA	
46	061885-000	PROSEAR-2 BURNER, 30", 42", 54"		EA	
Not Shown	061998-000	SCREEN REPLACEMENT, PROSEAR 2 BURNER		EA	
47	061988-000	BRIQUETTE TRAY, WIDE, 30", 42", 54"		EA	
Not Shown	062006-000	COMPLETE TRAY W/BRIQUETTIES & CHIPS		EA	
48	061993-000	BRIQUETTIES, 35 PER BOX		EA	



Item	Part No.	Name	Qty	Uom	NOTES
49	061785-000	IR ACCESS COVER		EA	
50	061763-000	SCREW, 1/4-20 X 3/8 PH TRUSS HD, S/S		EA	
51	061963-000	ROTISERIE JACK + INTERNAL HARNESS		EA	
Not Shown	061874-000	JAKC ONLY, DC PANEL MOUNT		EA	
52	061972-000	MAIN POWER HARNESS (30, 36, 42, 54)		EA	
53	061872-000	TRANSFORMER, 5 AMP, ALL PRO		EA	
54	061886-000	ROTISERIE EXTERNAL CORD		EA	
55	061910-000	HOOD HANDLE, 30"		EA	
56	061806-000	EXTENSION SPRING, 30", 42", 54"		EA	
58	061914-000	END CAP FOR HOOD HANDLE		EA	
59	061889-000	HOOD THERMOMETER, SEALED		EA	
Not Shown	061890-000	WASHER FOR HOOD THERMOMETER		EA	
60	061764-000	PIVOT SCREW, 1/4-20 X 1" HEX DRIVE		EA	
Not Shown	061762-000	PIVOT SCREW NIT, HEX, 1/4-20 S/S		EA	
Not Shown	061772-000	PIVOT WASHER, SPLIT LOCK, 1/4 S/S		EA	
61	061815-000	SPIT ROD, PRO 30"		EA	
62	061799-000	SPIT FORK, HEAVY DUTY, ALL SIZES		EA	
63	061865-000	FRONT RETAINING BKT., WARMING RACK		EA	
64	061819-000	REAR RETAINING BRACKET, WARMING RACK		EA	
65	061891-000	LEFT RETAINING BRACKET, WARMING RACK		EA	
66	061765-000	SCREW #8-32 X 3/8 PH TRUSS HEAD S/S		EA	
67	061771-000	LOCK NUT, #8-32, S/S		EA	
68	061808-000	BOLT, HEX HEAD, 1/4-20 X 3/8", S/S		EA	
69	061791-000	ALTERNATE LIGHTING DEVICE, MATCH HOLDER		EA	



Item	Part No.	Name	Qty	Uom	NOTES
70	061790-000	SCREW, #8 X 1/2 PH TRUSS HD TYPE 'A'		EA	
71	061800-000	SCREW, #8-32 X 5/8 PH. PAN HD, S/S		EA	
72	061837-000	HOOD BUMPER, .500 DIA		EA	
73	061892-000	BRIQUETTE DIVIDER 30", 42", 54"		EA	
74	061773-000	SCREW, #10-24 X 3/4 PH FLAT HD S/S		EA	
75	061860-000	ROTIS. SPACER		EA	
76	061822-000	NUT, ACORN, #10-24, S/S		EA	
77	061823-000	WASHER, #10 SPLIT LOCK, S/S		EA	
78	061898-000	HEAT SHIELD, PRO 30"		EA	
Not Shown	061894-000	HEAT SHIELD, PROSEAR 30"		EA	
79	061770-000	NUT, COMBINATION (FOR HEAT SHIELD)		EA	
80	061858-000	DRAIN PLUG, DRIP PAN		EA	
81	061909-000	RETAINER, INSULATION		EA	
82	062008-000	INSULATION	2	EA	
NI	064803-000	WINDSCREEN 30"		EA	
NI	064806-000	WIND BAFFLE 30"		EA	



Appendix A:Pages Index

VQGI5300 Built-in Grill 1



Appendix B:Parts Index

061750-000	1	061827-000	1
061752-000	1	061834-000	1
061754-000	1	061835-000	1
061755-000	1	061836-000	1
061757-000	1	061837-000	1
061758-000	1	061838-000	1
061759-000	1	061841-000	1
061760-000	1	061853-000	1
061762-000	1	061858-000	1
061763-000	1	061859-000	1
061764-000	1	061860-000	1
061765-000	1	061861-000	1
061769-000	1	061863-000	1
061770-000	1	061865-000	1
061771-000	1	061867-000	1
061772-000	1	061868-000	1
061773-000	1	061869-000	1
061778-000	1	061871-000	1
061780-000	1	061872-000	1
061783-000	1	061874-000	1
061784-000	1	061875-000	1
061785-000	1	061876-000	1
061787-000	1	061878-000	1
061789-000	1	061881-000	1
061790-000	1	061883-000	1
061791-000	1	061884-000	1
061799-000	1	061885-000	1
061800-000	1	061886-000	1
061802-000	1	061889-000	1
061804-000	1	061890-000	1
061805-000	1	061891-000	1
061806-000	1	061892-000	1
061808-000	1	061894-000	1
061810-000	1	061898-000	1
061811-000	1	061900-000	1
061815-000	1	061904-000	1
061819-000	1	061905-000	1
061820-000	1	061909-000	1
061822-000	1	061910-000	1
061823-000	1	061914-000	1
		061915-000	1



061916-000 1
061917-000 1
061918-000 1
061934-000 1
061935-000 1
061936-000 1
061937-000 1
061945-000 1
061949-000 1
061953-000 1
061960-000 1
061963-000 1
061964-000 1
061967-000 1
061972-000 1
061975-000 1
061988-000 1
061992-000 1
061993-000 1
061994-000 1
061995-000 1
061996-000 1
061998-000 1
062000-000 1
062006-000 1
062008-000 1
062011-000 1
062012-000 1
062025-000 1
062428-000 1
064803-000 1
064806-000 1