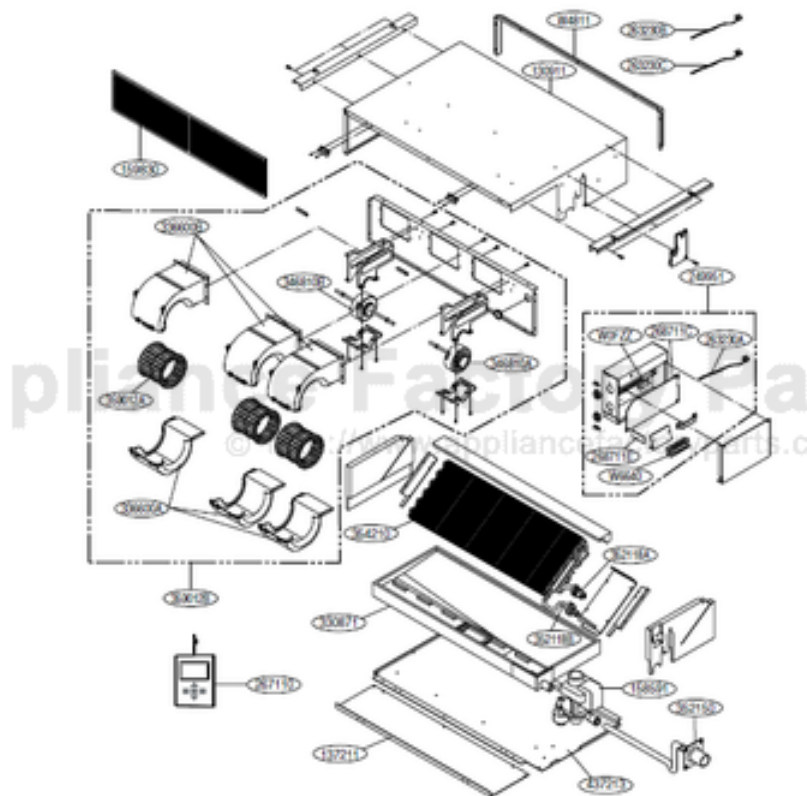


This Owner's Manual is provided and hosted by Appliance Factory Parts.



LG AMNW09GB1A0 Owner's Manual

[Shop genuine replacement parts for LG
AMNW09GB1A0](#)



[Find Your LG Air Conditioner Parts - Select From 2328 Models](#)

----- Manual continues below -----



Internal Use Only

<http://biz.lgservice.com>

Multi Air Conditioner

SVC MANUAL(Exploded View)

**MODEL : AMNW09GB1A0(LMDN095HV)
AMNW12GB1A0(LMDN125HV)**

CAUTION

Before Servicing the unit, read the safety precautions in General SVC manual.
Only for authorized service personnel.

1. Specification

| Indoor unit type | | | Ceiling Concealed Duct - Low Static | |
|------------------------------|-------------------------------|--------------|--|--|
| Model | | | AMNW09GB1A0 [LMDN095HV] | AMNW12GB1A0 [LMDN125HV] |
| Power Supply | | Ø / V / Hz | 1/ 208~230/ 60 | 1/ 208~230/ 60 |
| Capacity(*) | | Btu/h class | 9,000 | 12,000 |
| Current | Running Current | A | 0.25 | 0.25 |
| Fan | Motor Type | | BLDC | BLDC |
| | Fan Type | | Sirocco Fan | Sirocco Fan |
| | Motor Output(W) x No. of Unit | | 5 x 1, 19 x 1 | 5 x 1, 19 x 1 |
| | Air Flow Rate (H / M / L) | CMM | 9.5 / 8.5 / 7.5 | 15.0 / 13.5 / 11.5 |
| | | CFM | 300/ 265/ 230 | 335 / 300 / 265 |
| | External Static Pressure | mmAq | 4 | 4 |
| | Capacitor | µF / Vac | - | - |
| Drive | | Direct Drive | Direct Drive | |
| Coil | Row x Column x FPI | | 2R x 12C x 21 | 2R x 12C x 21 |
| Dimensions (W x H x D) | Body | mm(inch) | 820 x 190 x 575(32 9/32x7 1/2x 22 21/32) | 820 x 190 x 575(32 9/32x7 1/2x 22 21/32) |
| | Decorative Panel | mm(inch) | - | - |
| Net Weight | Body | kg (lbs) | 20.5(45.2) | 20.5(45.2) |
| | Decorative Panel | kg (lbs) | - | - |
| Air Filter | | | Long life filter | Long life filter |
| Sound Level (H / M / L) | | dB(A)+3 | 32/ 26/ 25 | 33/ 31/26 |
| Piping Connections | Liquid | mm (inch) | 6.35 (1/4) | 6.35 (1/4) |
| | Gas | mm (inch) | 9.52 (3/8) | 9.52 (3/8) |
| | Drain(OD/ID) | mm(inch) | 32/25(1.26/0.984) | 32/25(1.26/0.984) |
| Dehumidification Rate | | l/h | 1.0 | 1.2 |
| Safety Devices | | | Fuse, thermal protector for fan motor | Fuse, thermal protector for fan motor |
| Temperature Sensor | | | Thermistor | Thermistor |
| Referigerant | | | R410A | R410A |
| Referigerant Control | | | EEV(in Outdoor unit) | EEV(in Outdoor unit) |
| Transmission Interunit Cable | | No. x AWG | 4 x 18 (Including Earth) | 4 x 18 (Including Earth) |

Note:

1. Capacities are based on the following conditions:

Cooling: - Indoor Temperature 26.7°C(80°F) DB/19.4°C(67°F)

- Outdoor Temperature 35°C(95°F) DB/23.9°C(75°F)

Heating: - Indoor Temperature 21.1°C(70°F) DB/15.6°C(60°F) WB

- Outdoor Temperature 8.3°C(47°F) DB/6.1°C(43°F) WB

Piping Length - Interconnecting Piping Length 7.5m(24.6 ft.)

- Level Difference of Zero

2. Wiring cable size must comply with the applicable local and national code.

3. The specification may be subject to change without prior notice for purpose of improvement.

4. For more Capacity(*),refer to the combination table

| Conversion Formula |
|------------------------------|
| kW = Btu/h class X 0.0002931 |
| cfm = CMM x 35.3 |

2. Function Table

| Category | Function | AMNW09GB1A0 [LMDN095HV] | AMNW12GB1A0 [LMDN125HV] |
|----------------------|---|-------------------------|-------------------------|
| Air flow | Air supply outlet | 1 | 1 |
| | Airflow direction control(left & right) | - | - |
| | Airflow direction control(up & down) | - | - |
| | Auto swing(left & right) | - | - |
| | Auto swing(up & down) | - | - |
| | Airflow steps(fan / cool / heat) | 3 / 3 / 3 | 3 / 3 / 3 |
| | Chaos swing | - | - |
| | Chaos wind(auto wind) | X | X |
| | Jet cool(Power wind) | X | X |
| Air purifying | Swirl wind | X | X |
| | Deodorizing filter | X | X |
| | Plasma air purifier | X | X |
| Installation | Prefilter(washable / anti-fungus) | O | O |
| | Drain pump | O | O |
| | E.S.P. control | O | O |
| | Electric heater(operation) | X | X |
| Reliability | High ceiling operation | - | - |
| | Hot start | O | O |
| | Self diagnosis | O | O |
| Convenience | Soft dry operation | O | O |
| | Auto changeover | X | X |
| | Auto cleaning | X | X |
| | Auto operation(artificial intelligence) | O | O |
| | Auto restart operation | O | O |
| | Child lock | O | O |
| | Energy-Saving Cooling Mode | X | X |
| | Forced operation | X | X |
| | Group control | O | O |
| | Sleep mode | X | X |
| | Timer(on/off) | X | X |
| | Timer(weekly) | X | X |
| | Two thermistor control | O | O |
| Individual control | Wide wired remote controller | Accessory (PQRCUSA0) | Accessory (PQRCUSA0) |
| | Deluxe wired remote controller | Accessory (PQRCUDS0) | Accessory (PQRCUDS0) |
| | Simple wired remote controller | O | O |
| | Simple wired remote controller(for hotel use) | Accessory (PQRCFCS0C) | Accessory (PQRCFCS0C) |
| | Wireless remote controller(simple) | X | X |
| | Wireless LCD remote control | X | X |
| | Wireless LCD remote control(Ez) | X | X |
| CAC network function | General central controller (Non LGAP) | X | X |
| | Dry contact | Accessory (PQDSB) | Accessory (PQDSB) |
| | Central control(LGAP) | Accessory (PQCSB101S0) | Accessory (PQCSB101S0) |
| | PDI(power distribution indicator) | Accessory (PQNUD1S00) | Accessory (PQNUD1S00) |
| Special function kit | PI 485 | Accessory (PMNFP14A0) | Accessory (PMNFP14A0) |
| | CTIE | X | X |
| Others | Zone control | Accessory (ABZCA) | Accessory (ABZCA) |
| | Thermistor | - | - |

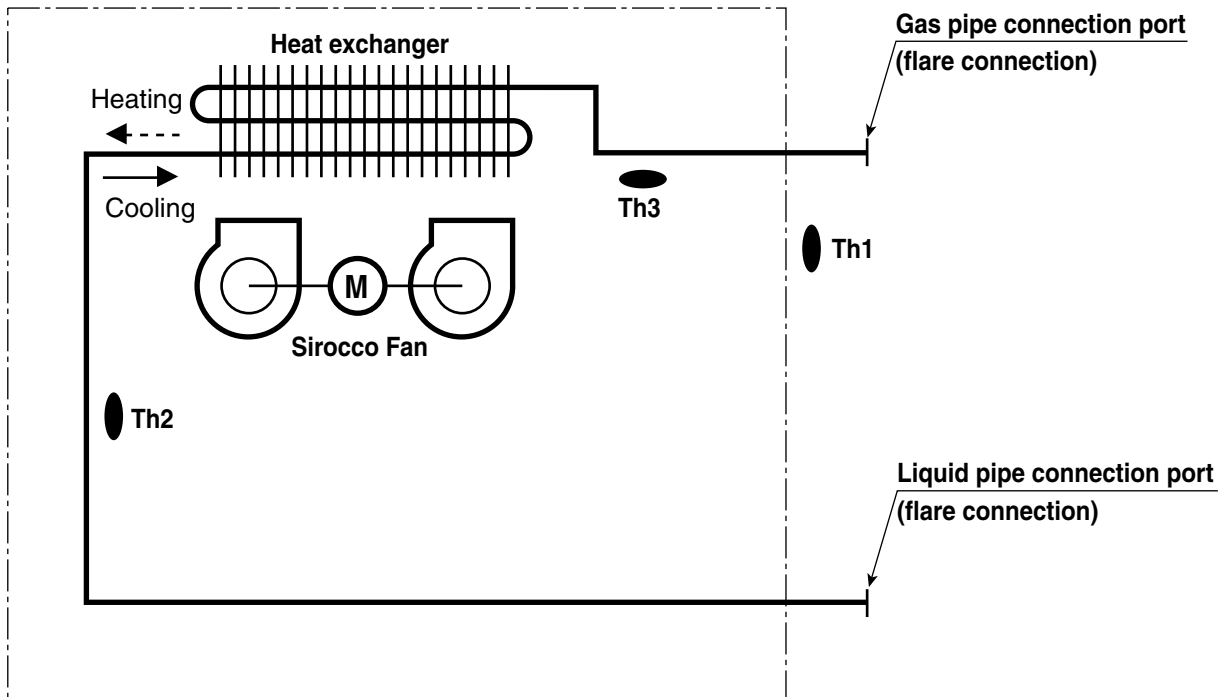
Note :

O : Applied, X : Not applied, - : No relation

* Option : Model name & price are different according to options, and assembled in factory with main unit.

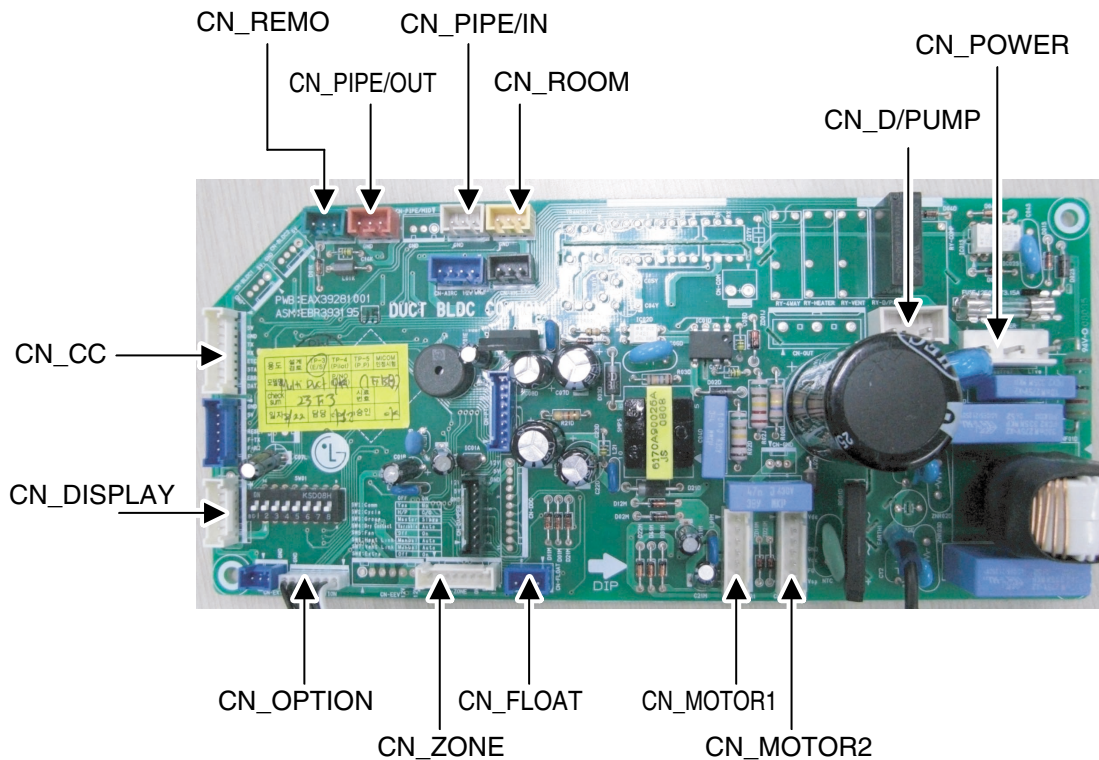
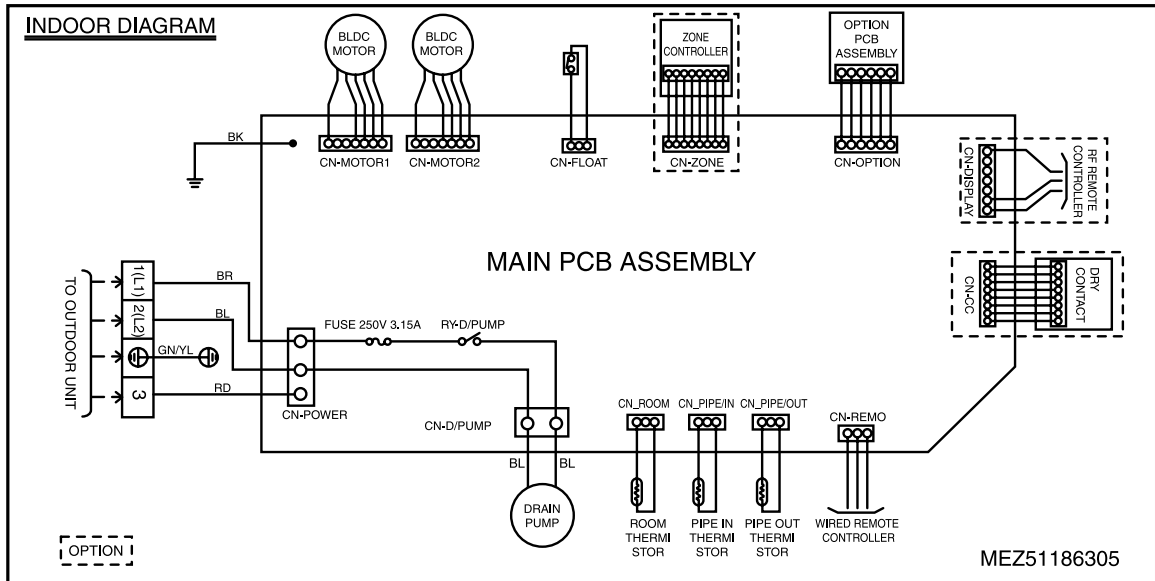
* Accessory : Installed at field, ordered and purchased separately by the corresponding model name, supplied with separate package.

3. Piping Diagrams

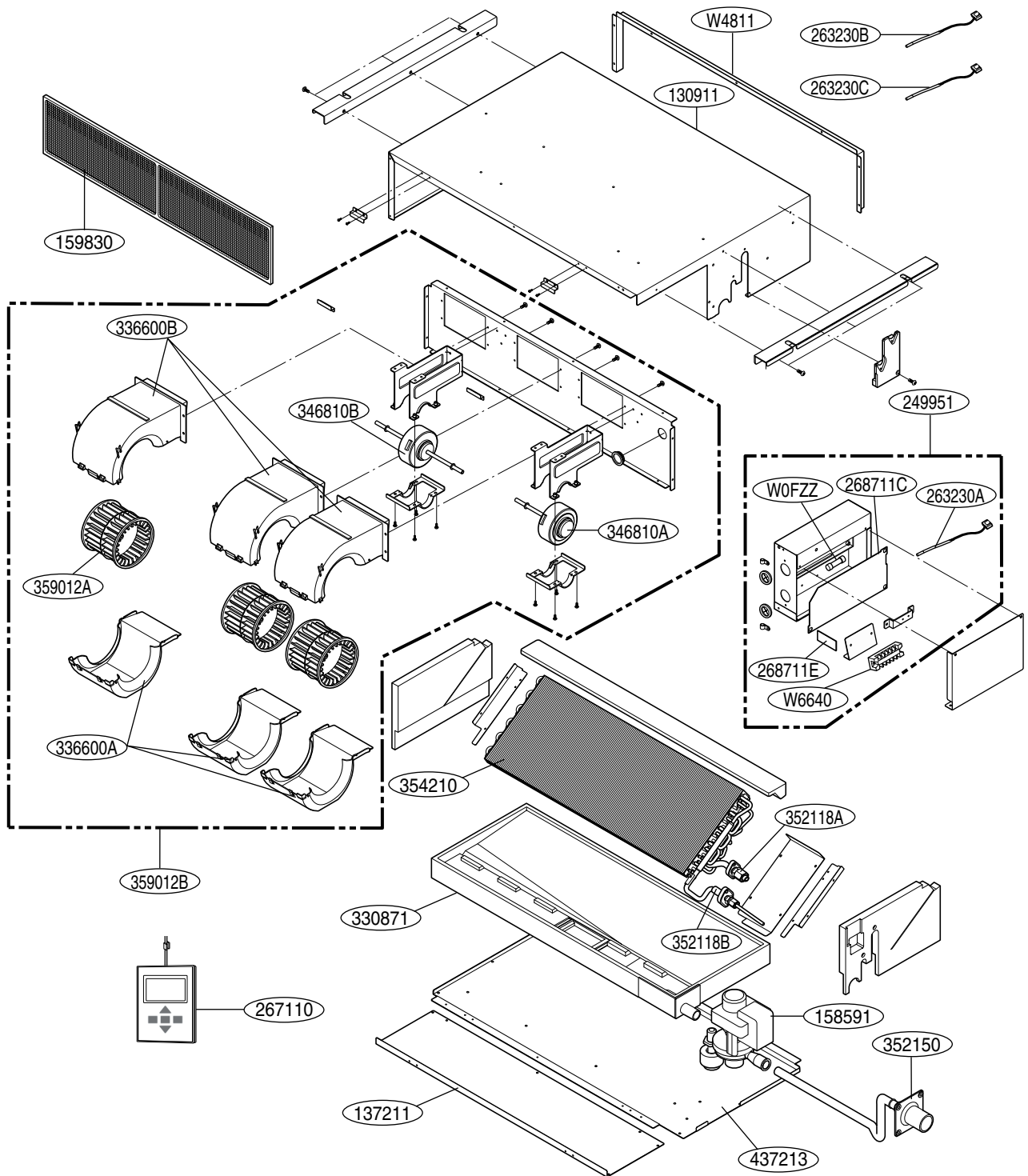


| LOC. | Description | PCB Connector |
|------|--|---------------|
| Th1 | Thermistor for sunction air temperature | CN_ROOM |
| Th2 | Thermistor for evaporator inlet temperature | CN_PIPE |
| Th3 | Thermistor for evaporator outlet temperature | CN_PIPEOUT |

4. Wiring Diagrams



5. Exploded View



Note) * Please ensure GCSC since the replacement parts may be changed depending upon the buyer's request. Please check the correct parts in View RPL(Replacement Part List) on GCSC. (GCSC Website <http://biz.lgservice.com>.)



P/NO : MFL61777607

JANUARY, 2009