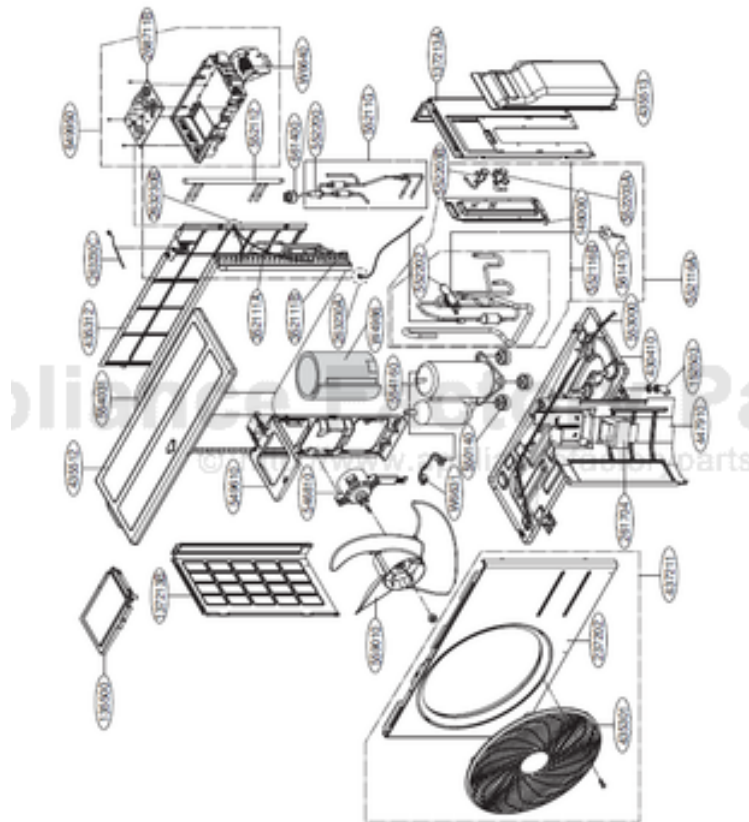


This Owner's Manual is provided and hosted by [Appliance Factory Parts](#).



# LG AS-W123BRM9 Owner's Manual

[Shop genuine replacement parts for LG AS-W123BRM9](#)



[Find Your LG Air Conditioner Parts - Select From 2330 Models](#)

----- Manual continues below -----



Internal Use Only

<http://biz.lgservice.com>

# Room Air Conditioner

## **SVC MANUAL(Exploded View)**

**MODEL : AS-W093BRM9(LAN090HSV2/LAU090HSV2)  
AS-W123BRM9(LAN120HSV2/LAU120HSV2)  
AS-W093B1Y9(LSN091HSV2/LSU091HSV2)  
AS-W123B1Y9(LSN121HSV2/LSU121HSV2)**

### **CAUTION**

Before Servicing the unit, read the safety precautions in General SVC manual.  
Only for authorized service personnel.

# 1. Specification

| Models                               |   | Unit        | AS-W093BRM9                   | AS-W123BRM9                   | AS-W093B1Y9                   | AS-W123B1Y9                   |             |
|--------------------------------------|---|-------------|-------------------------------|-------------------------------|-------------------------------|-------------------------------|-------------|
| Cooling Capacity                     |   | kW          | 0.89~2.64~3.70                | 0.89~3.3~4.30                 | 0.89~2.64~3.70                | 0.89~3.3~4.30                 |             |
|                                      |   | Btu/h.      | 3,070~9,000~12,620            | 3,070~11,200~14,660           | 3,070~9,000~12,620            | 3,070~11,200~14,660           |             |
| Heating Capacity                     |   | kW          | 0.89~3.17~5.00                | 0.89~3.90~6.00                | 0.89~3.17~5.00                | 0.89~3.90~6.00                |             |
|                                      |   | Btu/h.      | 3,070~10,800~17,060           | 3,070~13,300~20,470           | 3,070~10,800~17,060           | 3,070~13,300~20,470           |             |
| Power Input                          | Cooling/Heating                         | W           | 677 / 700                     | 896 / 1,000                   | 677 / 700                     | 896 / 1,000                   |             |
| Running Current                      | Cooling/Heating                         | A           | 3.0 / 3.7                     | 4.2 / 4.9                     | 3.0 / 3.7                     | 4.2 / 4.9                     |             |
| Starting Current                     | Cooling/Heating                         | A           | 3.0 / 3.7                     | 4.2 / 4.9                     | 3.0 / 3.7                     | 4.2 / 4.9                     |             |
| EER                                  |   | W/W         | 3.91                          | 3.67                          | 3.91                          | 3.67                          |             |
|                                      |   | Btu/h.W     | 13.3                          | 12.5                          | 13.3                          | 12.5                          |             |
| SEER                                 |   |             | 20                            | 20                            | 20                            | 20                            |             |
| HSPF                                 |   |             | 11                            | 11                            | 11                            | 11                            |             |
| Power Supply                         |   | Ø / V / Hz  | 1/208-230/60                  | 1/208-230/60                  | 1/208-230/60                  | 1/208-230/60                  |             |
| Power Factor                         |   | %           | 93/97.1/93/97.1               | 93/97.1/93/97.1               | 93/97.1/93/97.1               | 93/97.1/93/97.1               |             |
| Air Flow Rate                        | Indoor,Max                              | m3/min(CFM) | 12.0 (423)                    | 12.0(423)                     | 12.0 (423)                    | 12.0(423)                     |             |
|                                      | Outdoor,Max                             | m3/min(CFM) | 33(1,165)                     | 33(1,165)                     | 33(1,165)                     | 33(1,165)                     |             |
| Moisture Removal                     |   | l/h.        | 1.1                           | 1.3                           | 1.1                           | 1.3                           |             |
| Sound Level                          | Indoor,H/M/L                            | dB(A)±3     | 39 / 33 / 24                  | 39 / 33 / 24                  | 39 / 33 / 24                  | 39 / 33 / 24                  |             |
|                                      | Outdoor,Max                             | dB(A)±3     | 45                            | 45                            | 45                            | 45                            |             |
| Refrigerant & Charge (at 7.5 m)      |   | g(oz)       | R410A, 1,000(35.3)            | R410A, 1,000(35.3)            | R410A, 1,000(35.3)            | R410A, 1,000(35.3)            |             |
| Additional Refrigerant charge        |   | g/m(oz/ft)  | 20(0.22)                      | 20(0.22)                      | 20(0.22)                      | 20(0.22)                      |             |
| Compressor                           | Type                                    |             | Rotary                        | Rotary                        | Rotary                        | Rotary                        |             |
|                                      | Model                                   |             | 5RS102XAA21                   | 5RS102XAA21                   | 5RS102XAA21                   | 5RS102XAA21                   |             |
|                                      | Motor Type                              |             | Brushless DC Motor            | Brushless DC Motor            | Brushless DC Motor            | Brushless DC Motor            |             |
|                                      | Oil Type                                |             | PVE(FV50S)                    | PVE(FV50S)                    | PVE(FV50S)                    | PVE(FV50S)                    |             |
|                                      | Oil Charge                              | cc          | 320                           | 320                           | 320                           | 320                           |             |
|                                      | O.L.P. name                             |             | -                             | -                             | -                             | -                             |             |
| Fan(Indoor)                          | Type                                    |             | Cross Flow Fan                | Cross Flow Fan                | Cross Flow Fan                | Cross Flow Fan                |             |
|                                      | Motor Output                            | W           | 20                            | 20                            | 20                            | 20                            |             |
| Fan(Outdoor)                         | Type                                    |             | Propeller                     | Propeller                     | Propeller                     | Propeller                     |             |
|                                      | Motor Type                              |             | BLDC                          | BLDC                          | BLDC                          | BLDC                          |             |
|                                      | Motor Output                            | W           | 43                            | 43                            | 43                            | 43                            |             |
| Circuit Breaker*                     |   | A           | 15                            | 15                            | 15                            | 15                            |             |
| Power Supply Cable                   |   | No.*mm2     | 3*1.5                         | 3*1.5                         | 3*1.5                         | 3*1.5                         |             |
| Power and Transmission Cable No.*mm2 |   | No.*mm2     | 4*1.0 (Including Earth)       | 4*1.0 (Including Earth)       | 4*1.0 (Including Earth)       | 4*1.0 (Including Earth)       |             |
| Piping Connections                   | Liquid Side                             | mm(in)      | 6.35(1/4)                     | 6.35(1/4)                     | 6.35(1/4)                     | 6.35(1/4)                     |             |
|                                      | Gas Side                                | mm(in)      | 9.52(3/8)                     | 9.52(3/8)                     | 9.52(3/8)                     | 9.52(3/8)                     |             |
| Drain Hose(O.D./I.D.)                |   | mm(in)      | 21.5 / 16.0(0.85 / 0.63)      | 21.5 / 16.0(0.85 / 0.63)      | 21.5 / 16.0(0.85 / 0.63)      | 21.5 / 16.0(0.85 / 0.63)      |             |
| Dimensions                           | Indoor (W*H*D)                          | mm          | 895*285*205                   | 895*285*205                   | 895*285*195                   | 895*285*195                   |             |
|                                      | inch                                    |             | 35.2*11.2*8.1                 | 35.2*11.2*8.1                 | 35.2*11.2*7.7                 | 35.2*11.2*7.7                 |             |
|                                      | Outdoor (W*H*D)                         | mm          | 770*545*288                   | 770*545*288                   | 770*545*288                   | 770*545*288                   |             |
|                                      | inch                                    |             | 30.3*21.5*11.3                | 30.3*21.5*11.3                | 30.3*21.5*11.3                | 30.3*21.5*11.3                |             |
| Net Weight                           | Indoor                                  | kg(lbs)     | 11(24.5)                      | 11(24.5)                      | 10(22.1)                      | 10(22.1)                      |             |
|                                      | Outdoor                                 | kg(lbs)     | 35(77.2)                      | 35(77.2)                      | 35(77.2)                      | 35(77.2)                      |             |
| Gross Weight                         | Indoor                                  | kg(lbs)     | 13.5(29.7)                    | 13.5(29.7)                    | 12(26.5)                      | 12(26.5)                      |             |
|                                      | Outdoor                                 | kg(lbs)     | 37(81.6)                      | 37(81.6)                      | 37(81.6)                      | 37(81.6)                      |             |
| Operation Range                      | Cooling(Outdoor)                        | °C          | -10~48(14~118.4)              | -10~48(14~118.4)              | -10(-18)*~48(14.0(0)*~118.4)  | -10(-18)*~48(14.0(0)*~118.4)  |             |
|                                      | Heating(Outdoor)                        | °C          | -10~24(14.0~75.2)             | -10~24(14.0~75.2)             | -10~24(14.0~75.2)             | -10~24(14.0~75.2)             |             |
| Piping Length (Min/Max)              |   | m(ft)       | 2(6.6) / 20(65.6)             | 2(6.6) / 20(65.6)             | 2(6.6) / 20(65.6)             | 2(6.6) / 20(65.6)             |             |
| Chargeless                           |   | m(ft)       | 12.5(41.0)                    | 12.5(41.0)                    | 12.5(41.0)                    | 12.5(41.0)                    |             |
| Max. Elevation Difference            |   | m(ft)       | 10(32.8)                      | 10(32.8)                      | 10(32.8)                      | 10(32.8)                      |             |
| Tool Code(Chassis)                   | Indoor + Outdoor                        |             | SB_A + UL2                    | SB_A + UL2                    | SB_R + UL2                    | SB_R + UL2                    |             |
| Functions                            | Temperature Control                     |             | Thermistor                    | Thermistor                    | Thermistor                    | Thermistor                    |             |
|                                      | Allergy free filter                     |             | -                             | -                             | -                             | -                             |             |
|                                      | Plasma Filter                           |             | O                             | O                             | O                             | O                             |             |
|                                      | Prefilter(washable/anti-fungus)         |             | O                             | O                             | O                             | O                             |             |
|                                      | Auto Clean                              |             | O                             | O                             | O                             | O                             |             |
|                                      | CHAOS Wind(Auto Wind)                   |             | O                             | O                             | O                             | O                             |             |
|                                      | Steps, Fan/Cool/Heat                    |             | 5 / 6 / 5                     | 5 / 6 / 5                     | 5 / 6 / 5                     | 5 / 6 / 5                     |             |
|                                      | Airflow Direction Control(up& Down)     |             | Auto                          | Auto                          | Auto                          | Auto                          |             |
|                                      | Airflow Direction Control(left & right) |             | Auto                          | Auto                          | Auto                          | Auto                          |             |
|                                      | Remote Controller Type                  |             | Wireless LCD                  | Wireless LCD                  | Wireless LCD                  | Wireless LCD                  |             |
|                                      | Setting Temperature Range               | Cooling     |                               | 18°C ~ 30°C                   | 18°C ~ 30°C                   | 18°C ~ 30°C                   | 18°C ~ 30°C |
|                                      |   | Heating     |                               | 16°C ~ 30°C                   | 16°C ~ 30°C                   | 16°C ~ 30°C                   | 16°C ~ 30°C |
|                                      | Auto Operation (Micom Control)          |             | -                             | -                             | -                             | -                             |             |
|                                      | Auto Changeover (Micom Control)         |             | O                             | O                             | O                             | O                             |             |
|                                      | Self Diagnosis                          |             | O                             | O                             | O                             | O                             |             |
|                                      | Timer                                   |             | 24h, On/Off                   | 24h, On/Off                   | 24h, On/Off                   | 24h, On/Off                   |             |
|                                      | Sleep Operation                         |             | O                             | O                             | O                             | O                             |             |
|                                      | Soft Dry Operation                      |             | O                             | O                             | O                             | O                             |             |
|                                      | Restart Delay(minute)                   |             | 3                             | 3                             | 3                             | 3                             |             |
|                                      | Deice Control(Defrost)                  |             | O                             | O                             | O                             | O                             |             |
|                                      | Hot Start                               |             | O                             | O                             | O                             | O                             |             |
|                                      | Jet Cool                                |             | O                             | O                             | O                             | O                             |             |
|                                      | Low Ambient Operation                   |             | O                             | O                             | O                             | O                             |             |
| Special Function                     |   |             | WATER LEVEL SENSOR (OPTIONAL) | WATER LEVEL SENSOR (OPTIONAL) | WATER LEVEL SENSOR (OPTIONAL) | WATER LEVEL SENSOR (OPTIONAL) |             |

## Note:

O : Applied, - : No relation

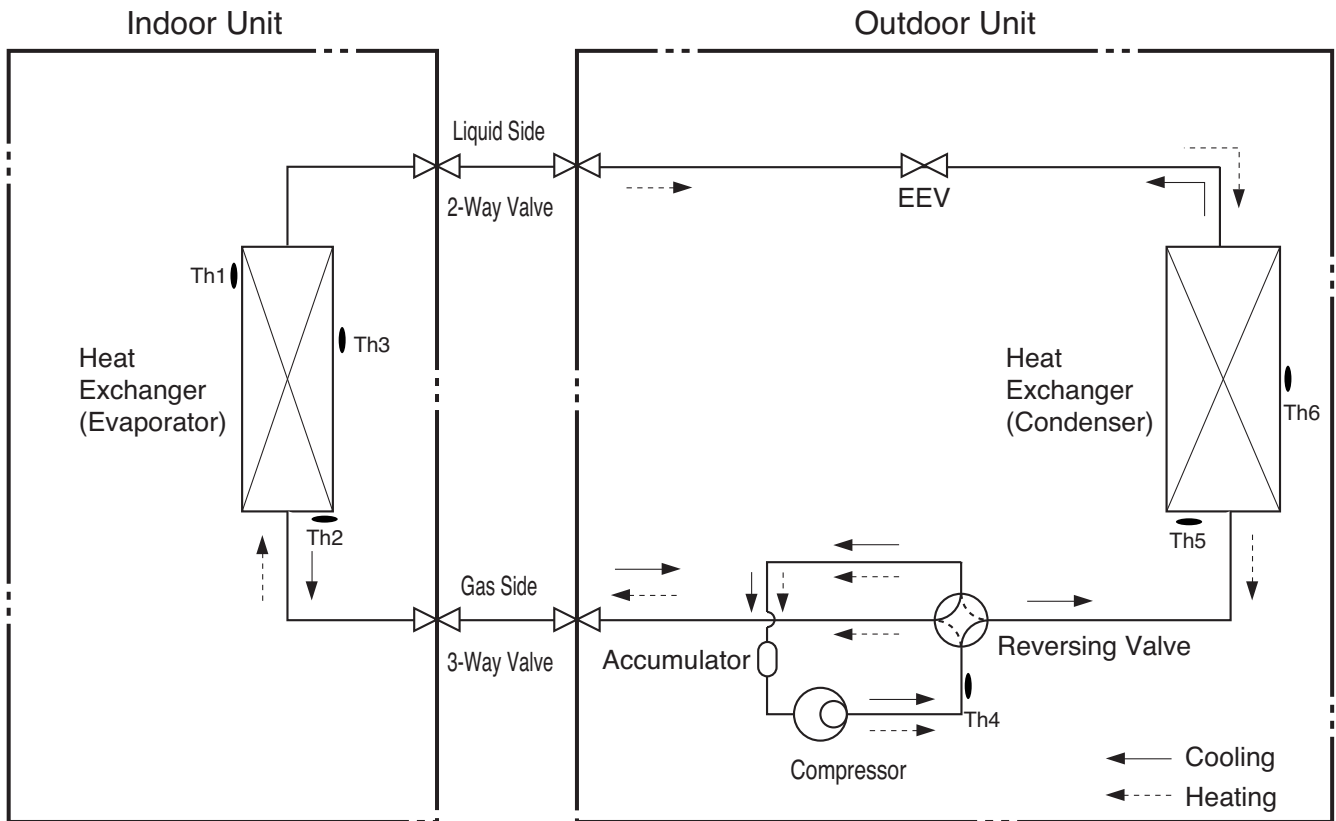
\* For circuit breaker rating, please conform to local standards wherever necessary.

\* With wind baffle accessory installed. with out wind baffle installed, the minimum temperature will be 14°F D.B.

\* Some of functions are slightly different depending upon models.

\* The specification may be subject to change without notice for purpose of improvement.

## 2. Piping Diagrams

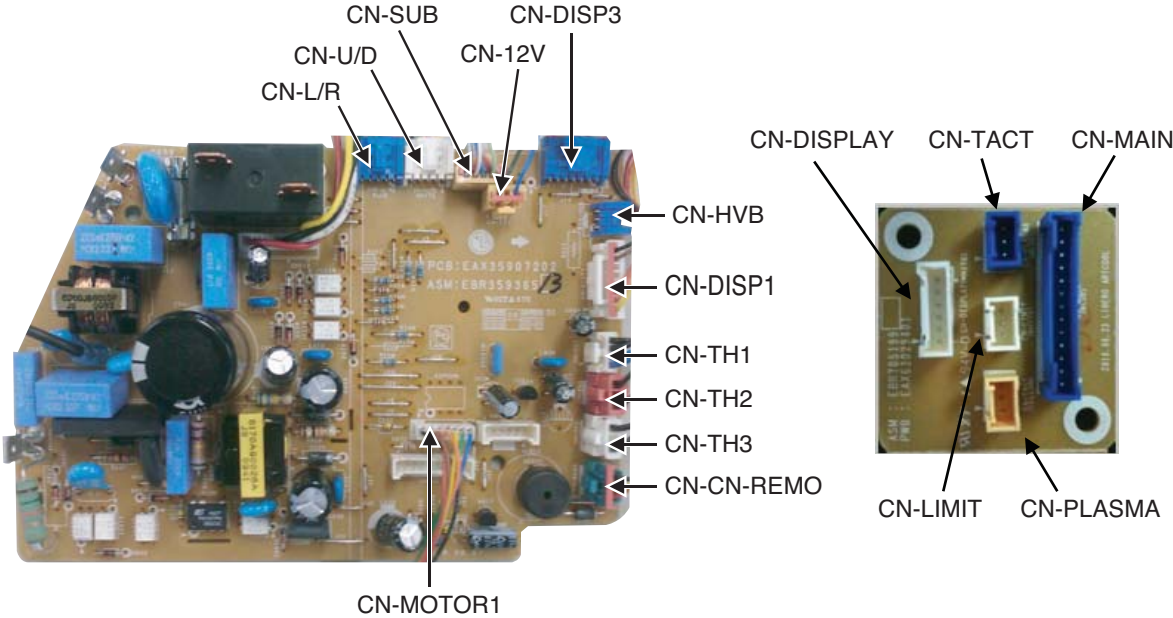
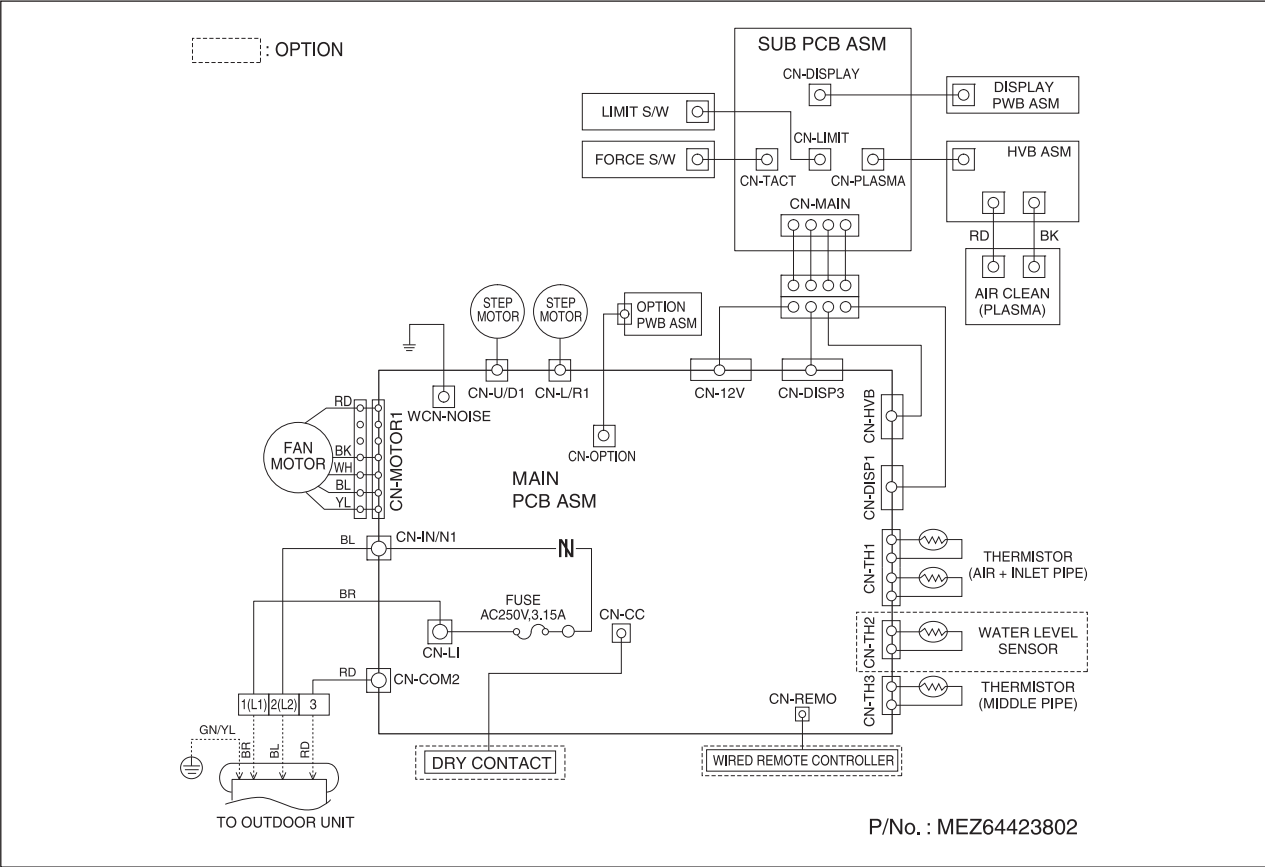


| LOC. | Description                                  | PCB Connector   |
|------|--|-----------------|
| Th1  | Thermistor for suction air temperature       | CN-TH1(Indoor)  |
| Th2  | Water Level Sensor (Option)                  | CN-TH2(Indoor)  |
| Th3  | Thermistor for evaporator middle temperature | CN-TH3(Indoor)  |
| Th4  | Thermistor for discharge pipe temperature    | CN-TH2(Outdoor) |
| Th5  | Thermistor for condensing temperature        | CN-TH1(Outdoor) |
| Th6  | Thermistor for outdoor air temperature       |                 |

# 3. Wiring Diagrams

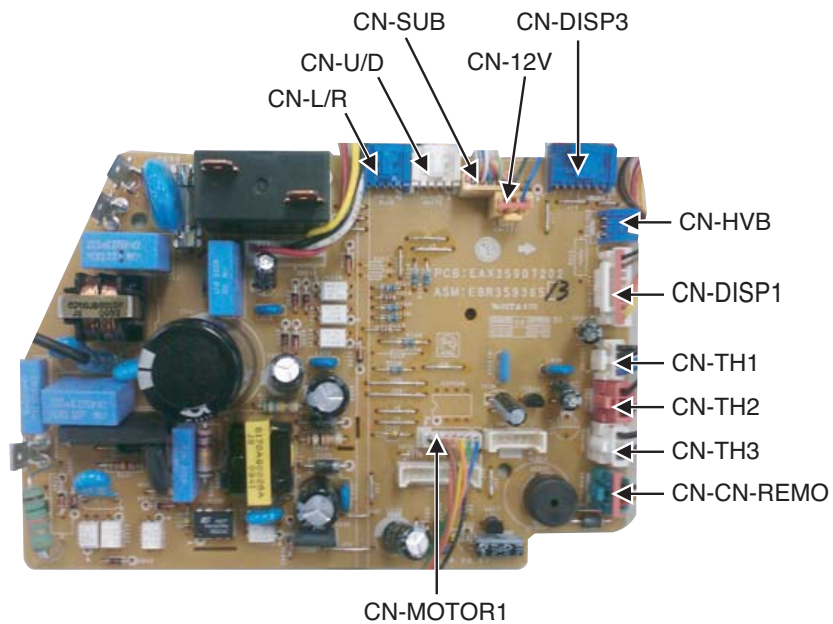
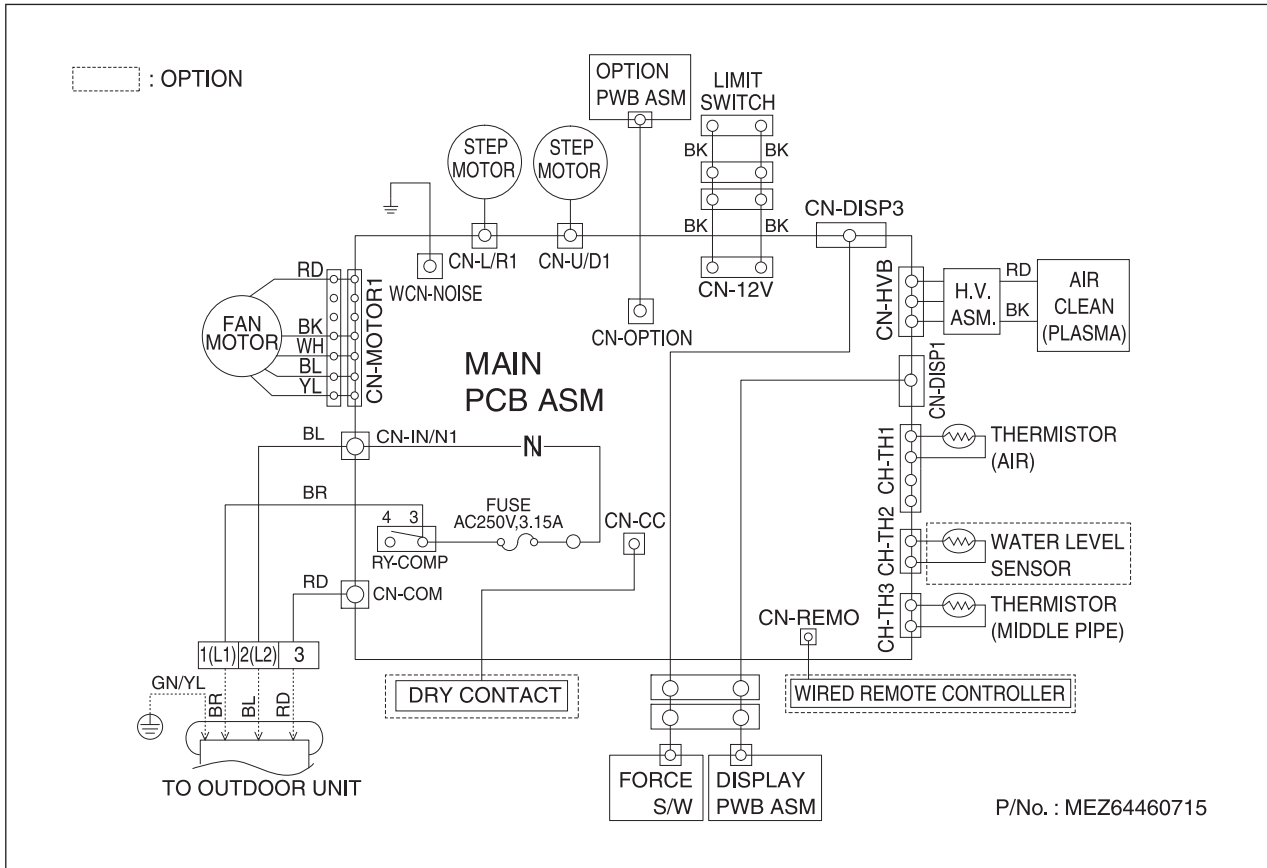
## Indoor Unit

MODEL : AS-W093BRM9, AS-W123BRM9

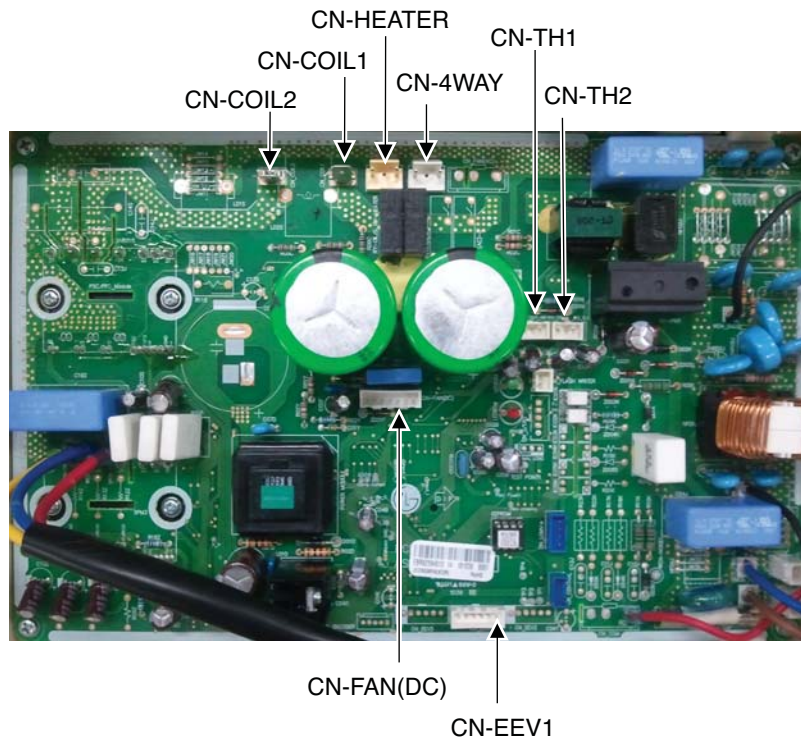
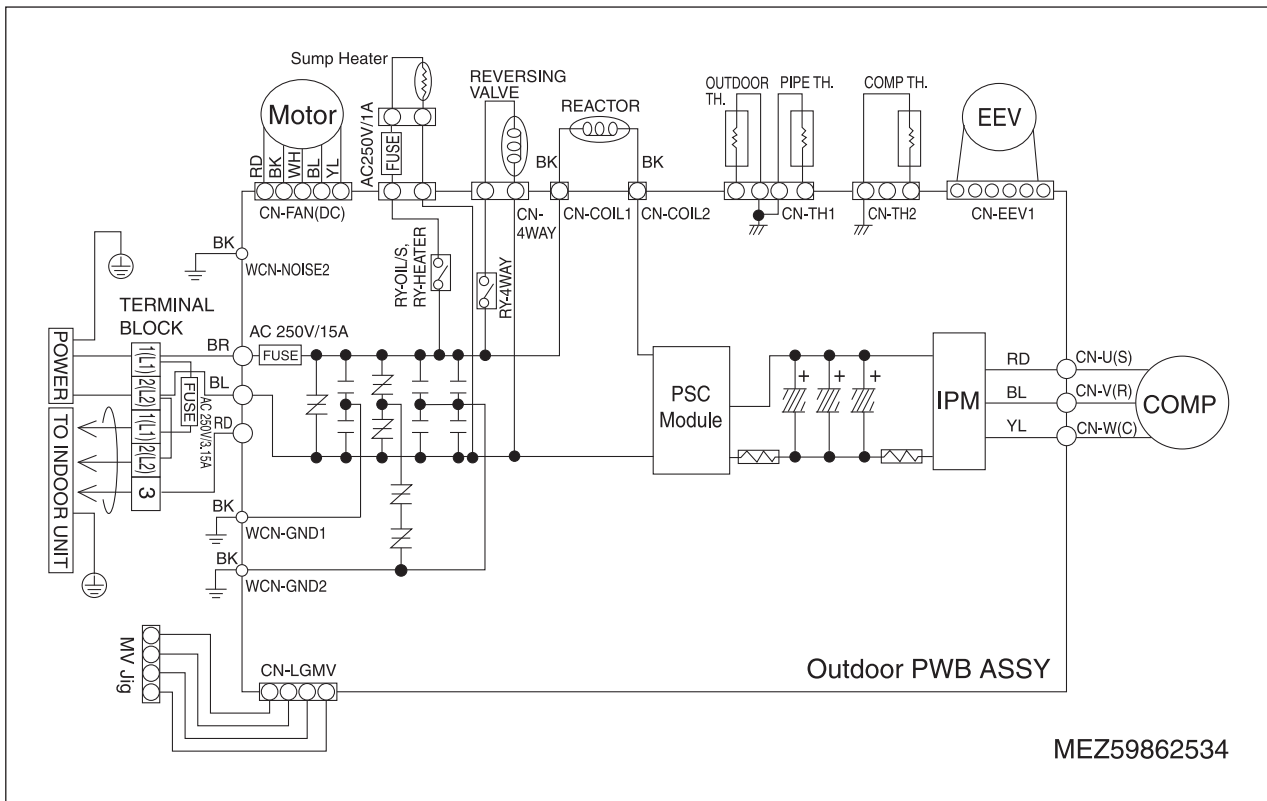


# Indoor Unit

MODEL : ASNW093B1Y9, ASNW123B1Y9

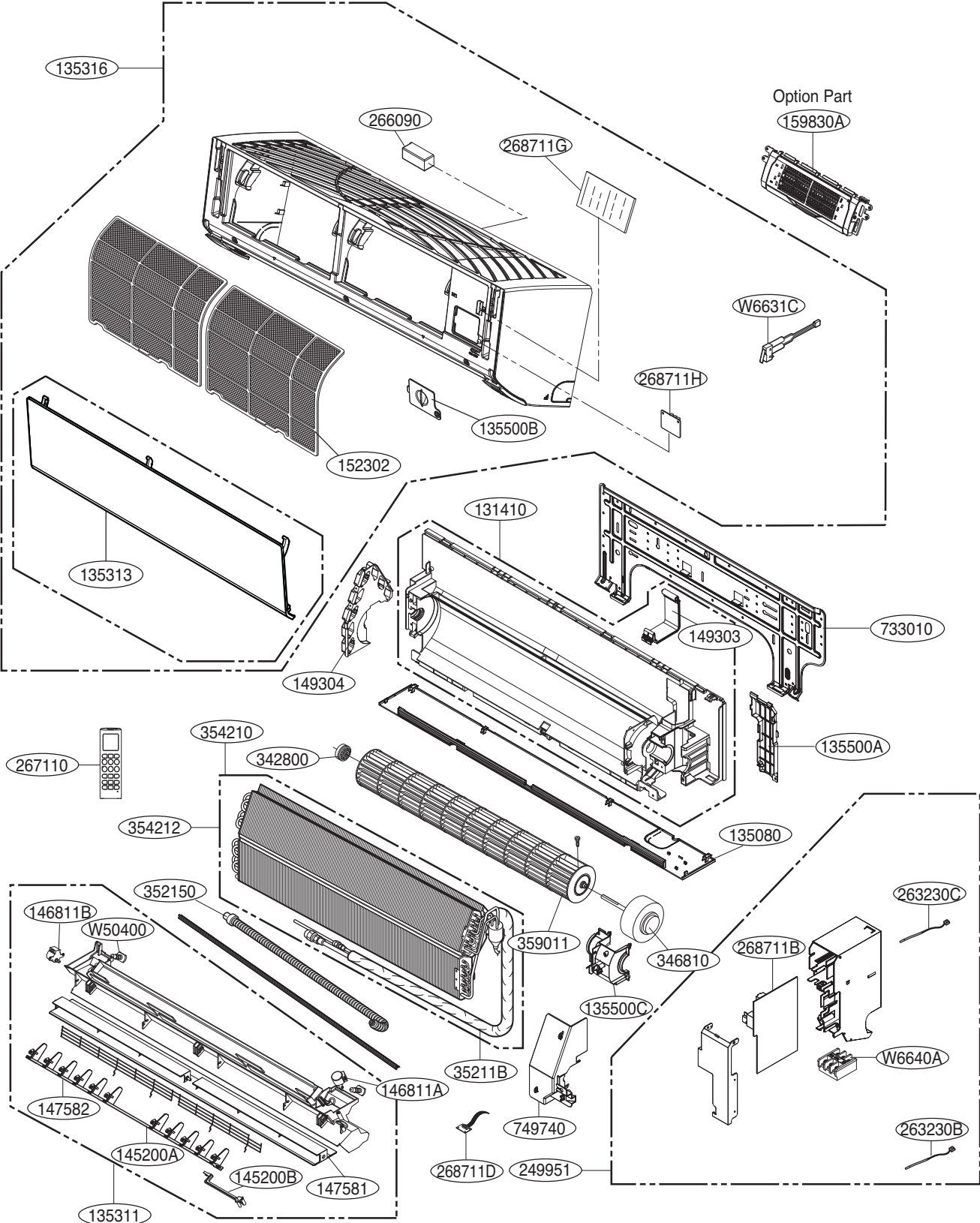


# Outdoor Unit

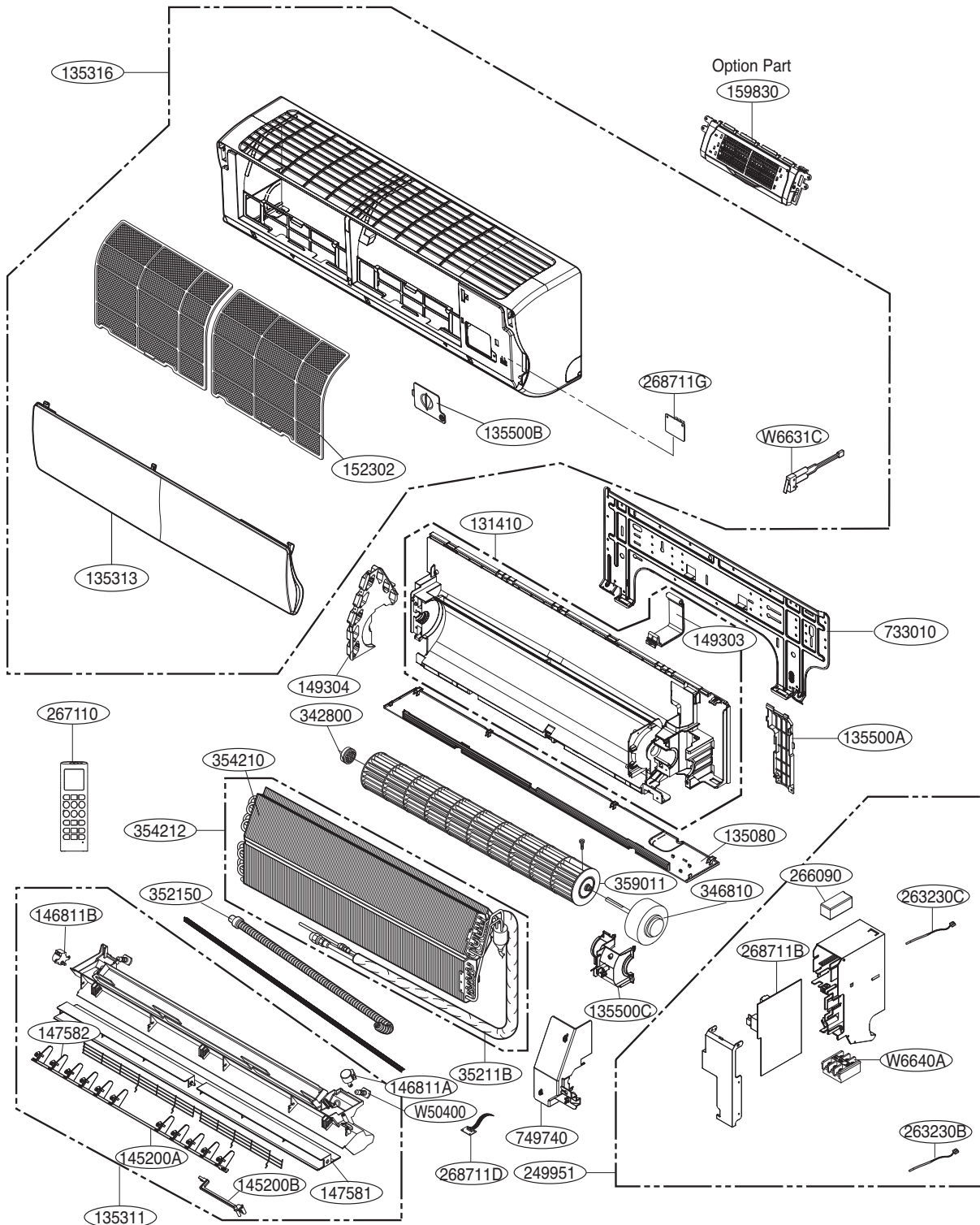


# 4. Exploded View

Model : AS-W093BRM9, AS-W123BRM9

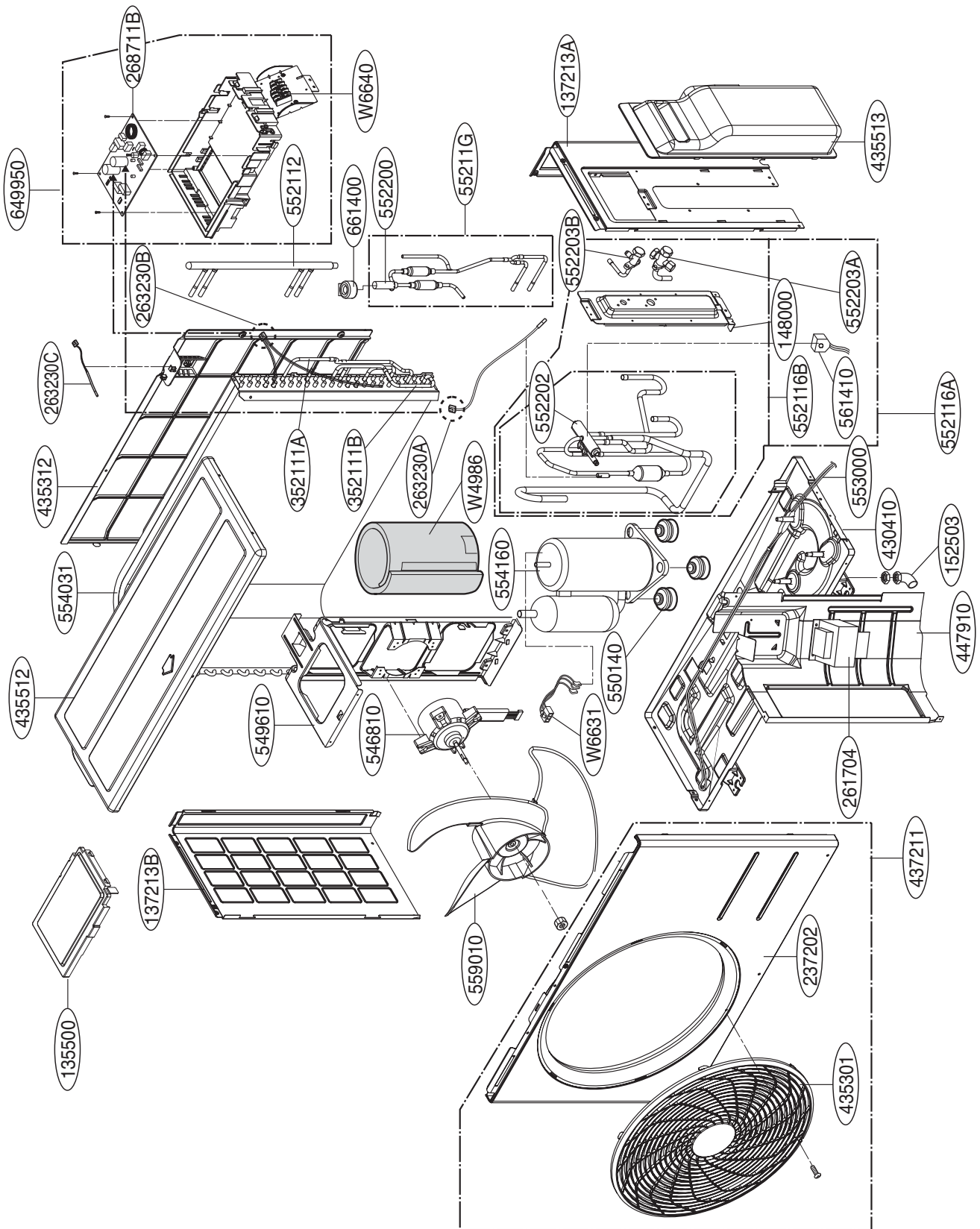


**MODEL : ASNW093B1Y9, ASNW123B1Y9**



Note) \* Please ensure GCSC since the replacement parts may be changed depending upon the buyer's request. Please check the correct parts in View RPL(Replacement Part List) on GCSC. (GCSC Website <http://www.lge.com>)

# Outdoor Unit





|        |  |
|--------|--|
| US     | 1. Please call the installing contractor of your product, as warranty service will be provided by them.<br>2. If you have service issues that have not been addressed by the contractor, please call 1-888-865-3026. |
| CANADA | Service call Number # : (888) LG Canada, (888) 542-2623  |

P/NO : MFL67501902

MAY, 2013