

This Owner's Manual is provided and hosted by [Appliance Factory Parts](#).



# LG AS-W243DGU1 Owner's Manual

[Shop genuine replacement parts for LG AS-W243DGU1](#)



[Find Your LG Air Conditioner Parts - Select From 2330 Models](#)

----- Manual continues below -----



Internal Use Only

<http://biz.lgservice.com>

# Room Air Conditioner

## **SVC MANUAL(Exploded View)**

**MODEL : AS-W243DGU1**

### **CAUTION**

Before Servicing the unit, read the safety precautions in General SVC manual.  
Only for authorized service personnel.

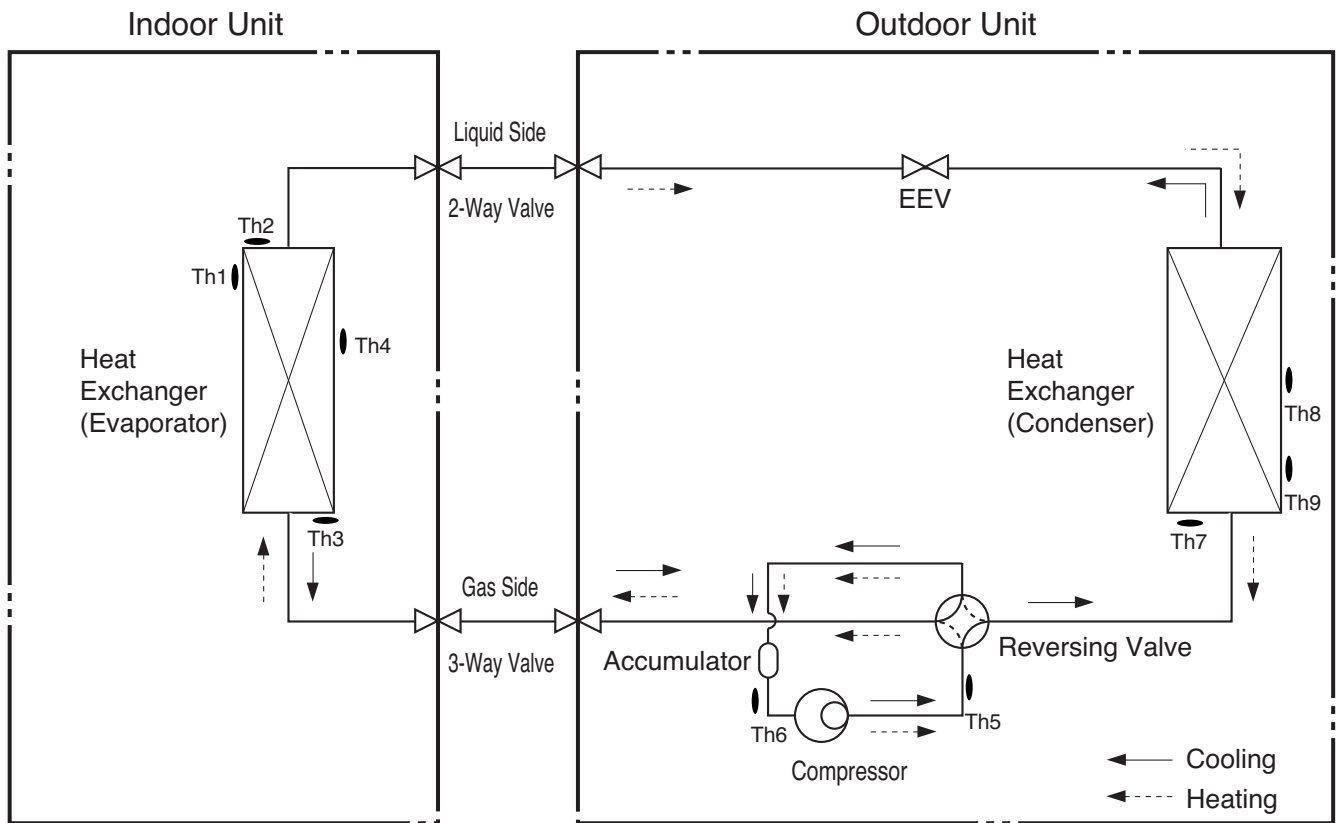
# 1. Product Specifications

Sales Model		Unit	LS240HSV	
Models		Unit	AS-W243DGU1	
Cooling Capacity		kW	0.90 ~ 6.45 ~ 8.80	
		Btu/h.	3,070~22,000~30,030	
Heating Capacity		kW	0.90 ~ 8.09 ~ 11.40	
		Btu/h.	3,070~27,600~38,898	
Power Input	Cooling	W	1760	
Running Current	Cooling/Heating	A	7.9 / 10.7	
Starting Current	Cooling/Heating	A	7.9 / 10.7	
EER		W/W	3.66	
		Btu/h.W	12.5	
SEER			18.9	
HSPF			10.2	
Power Supply		Ø / V / Hz	1/208-230/60	
Power Factor		%	96.9	
Air Flow Rate	Indoor,Max	m3/min(CFM)	25(883)	
	Outdoor,Max	m3/min(CFM)	60(2,119)	
Moisture Removal		l/h.	2.8	
Sound Level	Indoor,H/M/L	dB(A)±3	46/43/39	
	Outdoor,Max	dB(A)±3	54	
Refrigerant & Charge (at 7.5 m)		g(oz)	R410A, 2,000(70.5)	
Additional Refrigerant charge		g/m(oz/ft)	35(0.38)	
Compressor	Type		Twin Rotary	
	Model		GJT240DAA	
	Motor Type		Brushless DC Motor	
	Oil Type		PVE(FVD68C)	
	Oil Charge	cc	900	
	O.L.P. name		-	
Fan(Indoor)	Type		Cross Flow Fan	
	Motor Output	W	76.1	
Fan(Outdoor)	Type		Propeller	
	Motor Type		BLDC	
	Motor Output	W	124	
Circuit Breaker*		A	25	
Power Supply Cable		No.*mm2	3*2.5	
Power and Transmission Cable No.*mm2		No.*mm2	4*1.0 (Including Earth)	
Piping Connections	Liquid Side	mm(in)	9.52(3/8)	
	Gas Side	mm(in)	15.88(5/8)	
Drain Hose(O.D / I.D.)		mm(in)	21.5 / 16.0(0.85 / 0.63)	
Dimensions	Indoor (W*H*D)	mm	1209*346*205	
		inch	47-5/8*13-5/8*8-1/16	
	Outdoor (W*H*D)	mm	870*800*320	
		inch	34-5/16*31-1/2*12-5/8	
Net Weight	Indoor	kg(lbs)	18(39.7)	
	Outdoor	kg(lbs)	60(132.3)	
Gross Weight	Indoor	kg(lbs)	20(44.1)	
	Outdoor	kg(lbs)	64(141.1)	
Operation Range	Cooling(Outdoor)	°C(°F)	-5~48(14~118.4)	
	Heating(Outdoor)	°C(°F)	-10(-15)~24(14.0~75.2)	
Piping Length (Min/Max)		m(ft)	- / 30(98.4)	
Chargeless		m(ft)	-	
Max. Elevation Difference		m(ft)	15(49.2)	
Tool Code(Chassis)	Indoor + Outdoor		SD + UE1+	
Functions	Temperature Control		Thermistor	
	Allergy free filter		O	
	Plasma Filter		O	
	Prefilter(washable/anti-fungus)		O	
	Auto Clean		O	
	CHAOS Wind(Auto Wind)		O	
	Steps, Fan/Cool/Heat		3/4/3	
	Airflow Direction Control(up& Down)		Auto	
	Airflow Direction Control(left & right)		Auto	
	Remote Controller Type		Wireless LCD(EZ-Remocon)	
	Setting Temperature Range	Cooling		18°C ~ 30°C
		Heating		16°C ~ 30°C
	Auto Operation (Micom Control)			-
	Auto Changeover (Micom Control)			O
	Self Diagnosis			O
	Timer			24h, On/Off
	Sleep Operation			O
	Soft Dry Operation			O
	Restart Delay(minute)			3
	Deice Control(Defrost)			O
	Hot Start			O
	Jet Cool			O
	Low Ambient Operation			O
Special Function			-	

Note : O : Applie, X : Not applied, - : No relation  
 • Filters are optional in some specific areas.

• For Circuit Breaker Rating, please conform to local standards whenever necessary.

## 2. Piping Diagrams

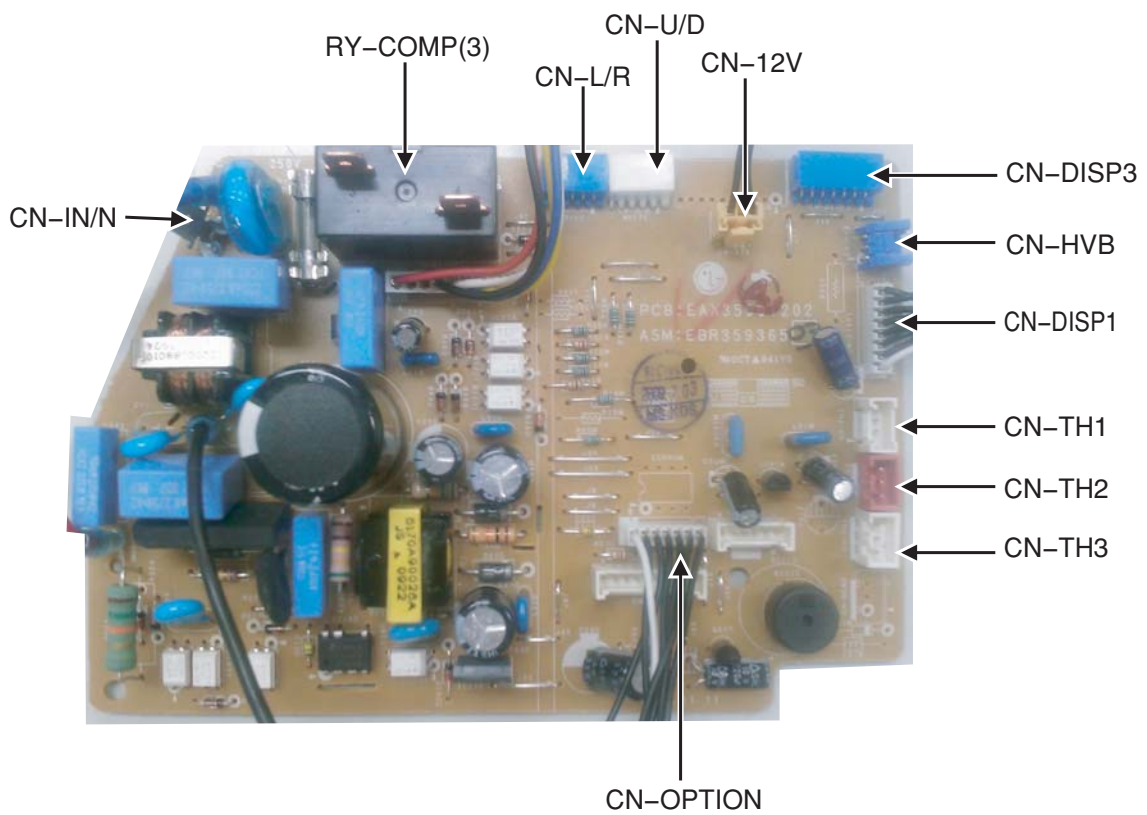
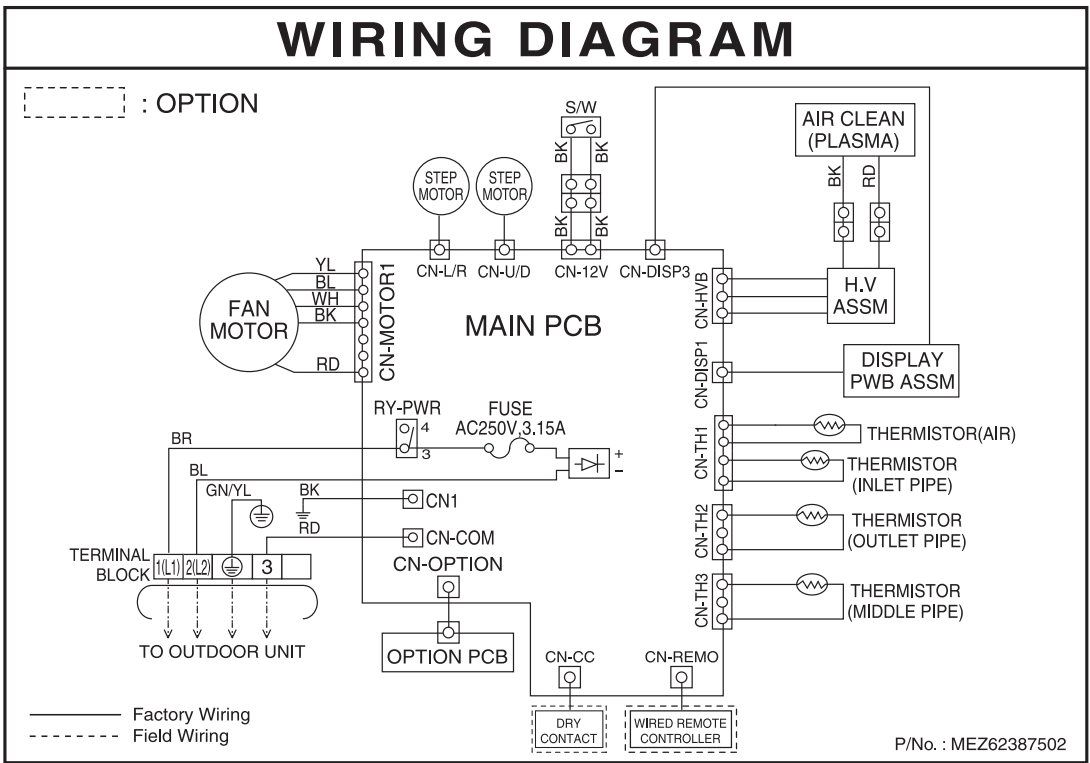


LOC.	Description	PCB Connector
Th1	Thermistor for suction air temperature	CN-TH1(Indoor)
Th2	Thermistor for evaporator inlet temperature	
Th3	Thermistor for evaporator outlet temperature	
Th4	Thermistor for evaporator middle temperature	
Th5	Thermistor for discharge pipe temperature	CN-TH3(OUTDOOR)
Th6	Thermistor for suction pipe temperature	
Th7	Thermistor for condensing temperature	CN-TH2(OUTDOOR)
Th8	Thermistor for outdoor air temperature	
Th9	Thermistor for condensing middle temperature	CN-TH4(OUTDOOR)

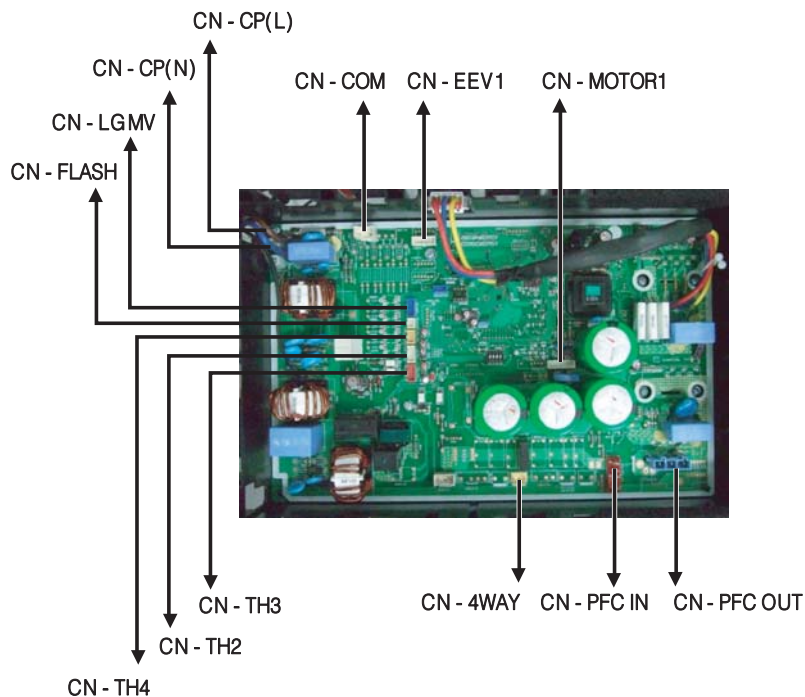
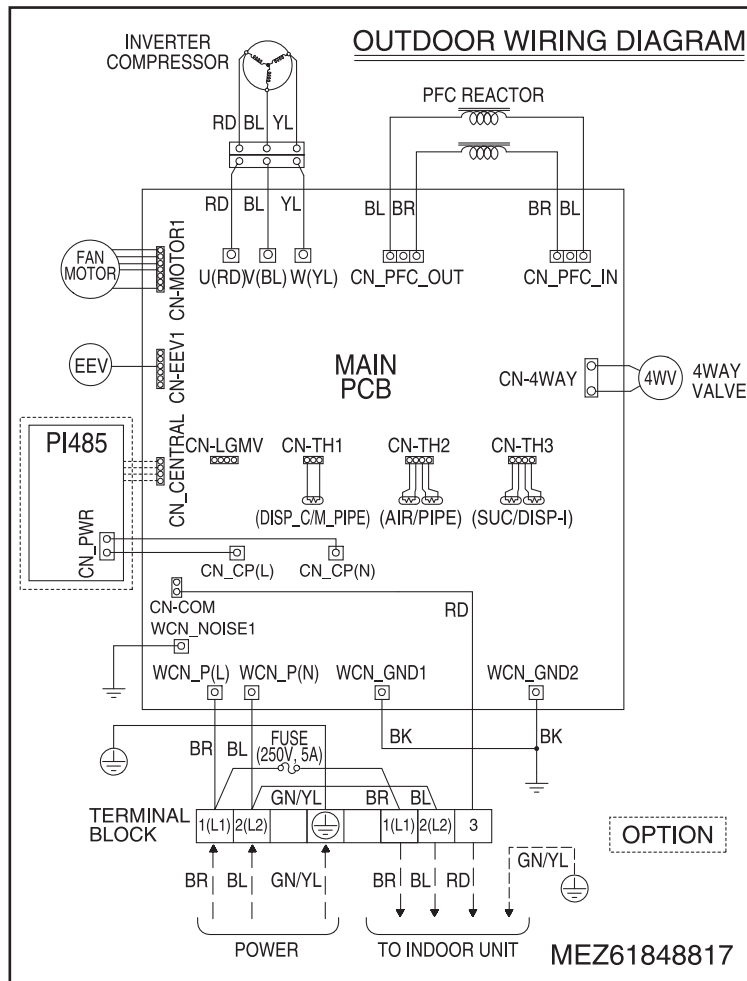
※ EEV : Electronic Expansion Valve

# 3. Wiring Diagrams

## Indoor Unit

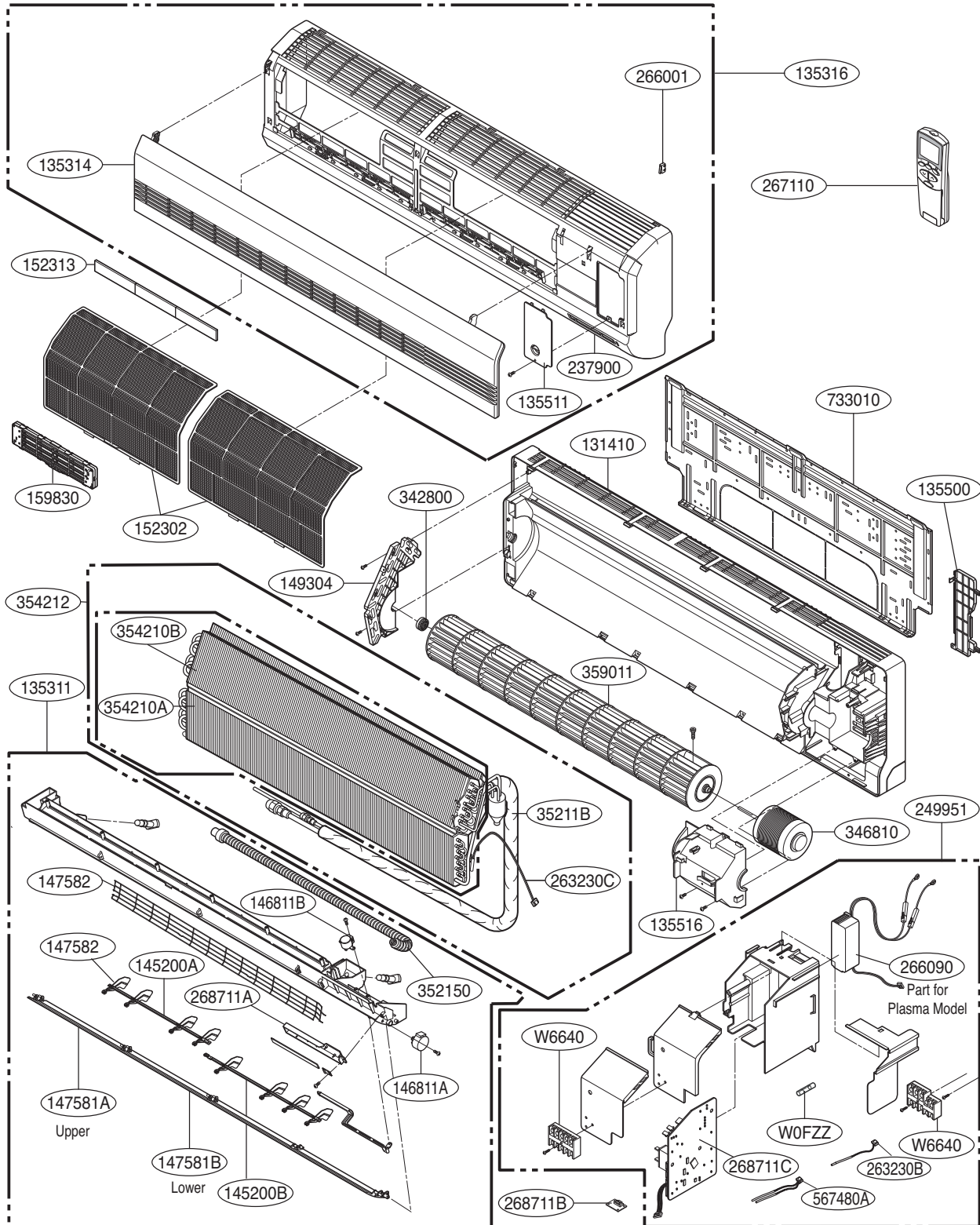


# Outdoor Unit



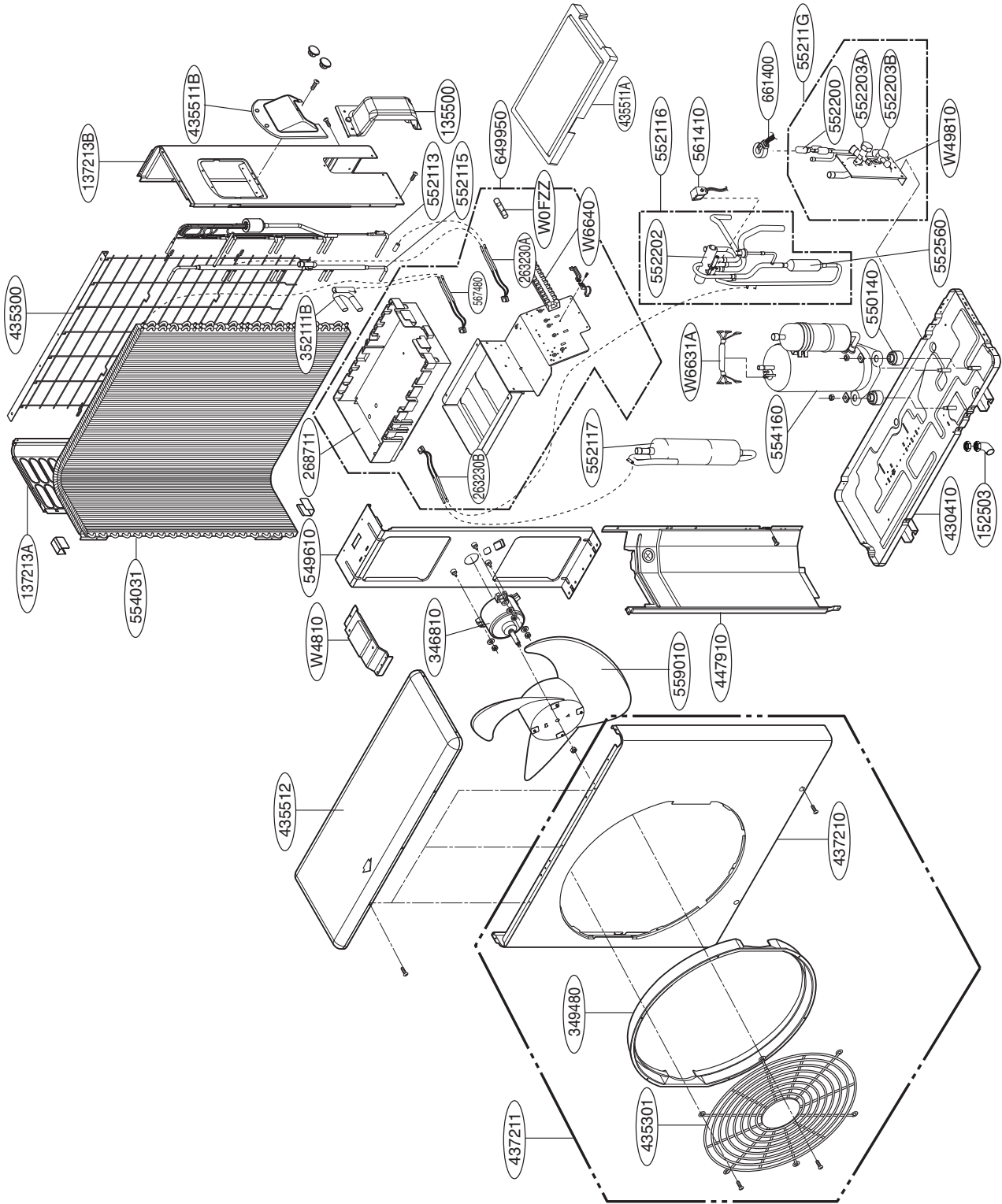
# Exploded View

## Indoor Unit



Note) \* Please ensure GCSC since the replacement parts may be changed depending upon the buyer's request.  
 Please check the correct parts in View RPL(Replacement Part List) on GCSC.  
 (GCSC Website <http://biz.Lgservice.com>.)

# Outdoor Unit





P/NO : MFL33984926

JUNE, 2010