

This Owner's Manual is provided and hosted by [Appliance Factory Parts](#).



LG ASNW2435SZ1 Owner's Manual

[Shop genuine replacement parts for LG ASNW2435SZ1](#)



[Find Your LG Air Conditioner Parts - Select From 2330 Models](#)

----- Manual continues below part list -----

Available Replacement Parts for LG ASNW2435SZ1

4280A20004M	Bearing
AKB74375404	Ac Remote Control Akb74375404
5901A92441E	Cross Flow Fan Assembly
4681A20042E	Motor Assembly,dc,stepping
5251A20011D	Drain Hose Assembly
EBG61107008	Ntc Thermistor Assembly
EAU62004011	Motor Assembly,dc,indoor
4681A20042G	Motor Assembly,dc,stepping



Room Air Conditioner

SVC MANUAL(Exploded View)

**MODEL : ASNW2435SZ1(LSN246HV)
ASUW2435SZ1(LSU246HV)**

CAUTION

Before Servicing the unit, read the safety precautions in General SVC manual.
Only for authorized service personnel.

1. Specification

Models		AS-W2435SZ1 (LS246HV)		
Cooling Capacity (Min~Rating~Max)		kW	3.87~7.15~7.74	
		Btu/h	13,200~24,400~26,400	
Heating Capacity (Min~Rating~Max)		kW	3.37~7.62~8.88	
		Btu/h	11,500~26,000~30,300	
Power Input	Cooling/Heating	W	2652/2920	
Running Current	Cooling/Heating	A	11.7/13.0	
Starting Current	Cooling/Heating	A	11.7/13.0	
EER		W/W	2.7	
		Btu/h.W	9.2	
COP		W/W	8.9	
Power Supply		∅ / V / Hz	1/208-230/60	
Power Factor		%	97	
Air Flow Rate	Indoor,Max	mm ³ /min(cfm)	20.3(717)	
	Outdoor,Max	mm ³ /min(cfm)	58(2,048)	
Moisture Removal		l/h	2.7	
Sound Level	Indoor,H/M/L	dB(A)+3	45/40/37	
	Outdoor,Max	dB(A)+3	54	
Refrigerant & Charge(at 7.5m)		g(oz)	R410A, 1,800(63)	
Additional Refrigerant Charge		g/m(oz/ft)	30(0.32)	
Compressor	Type		Rotary	
	Model		5KD240XCA21	
	Motor Type		BLDC	
	Oil Type		FV50S	
	Oil Charge	cc	900	
	O.L.P Name		-	
Fan(Indoor)	Type		Cross Flow Fan	
	Motor Output	W	24	
Fan(outdoor)	Type		Propeller	
	Motor Type		AC Induction	
	Motor Output	W	76.5	
Circuit Breaker*		A	25	
Power Supply Cable		NEC	12	
Power and Transmission Cable		NEC	18	
Piping Connections	Liquid Side	mm(in)	9.52(3/8)	
	Gas Side	mm(in)	15.88(5/8)	
Drain Hose	O.D , I.D	mm(in)	21.5.16(0.85,0.63)	
Dimension	Indoor(W*H*D)	mm	1,090*300*178	
		inch	42.9*11.8*7.0	
	Outdoor(W*H*D)	mm	870*800*320	
		inch	34.3*34.6*12.6	
Net Weight	Indoor	kg(lbs)	13.0(28.7)	
	Outdoor	kg(lbs)	66(145.5)	
Operation Range	Cooling(Outdoor)	°C	-10 ~ 46 (14.0~114.8)(Low Ambient)	
	Heating(Outdoor)	°C	-10 ~ 24 (14.0 ~ 75.2)	
Max. Piping Length		m(ft)	30(98)	
Max. Elevation Difference		m(ft)	15(49)	
Tool Code(Chassis)	Indoor + Outdoor		S8 + UE1	
Functions	Temperature Control		Thermistor	
	Plasma Filter		-	
	Prefilter(washable/anti-fungus)		O	
	Auto Clean		O	
	CHAOS Wind(Auto Wind)		O	
	Steps, Fan/Cool/Heat		-/4/4	
	Airflow Direction Control(up&down)		Auto	
	Airflow Direction Control(left&right)		Auto	
	Remocon Type		Wireless LCD	
	Setting Temperature Range	Cooling		18 ~ 30 (64~86)
		Heating		16 ~ 30 (60~86)
	Auto Operation (Micom Control)		-	
	Auto Changeover (Micom Control)		O	
	Self Diagnosis		O	
	Timer		24h On/Off	
	Sleep Operation		O	
	Soft Dry Operation		O	
	Restart Delay(minute)		2	
	Deice Control(Defrost)		O	
	Hot Start		O	
	Jet Cool / Heat		O / O	
	Low Ambient Operation		O	
	Special Function		-	
Network Functions	Dry Contact		-	
	Network Solution(LGAP)		-	
	PI485		-	

Note:

O : Applied, - : No relation

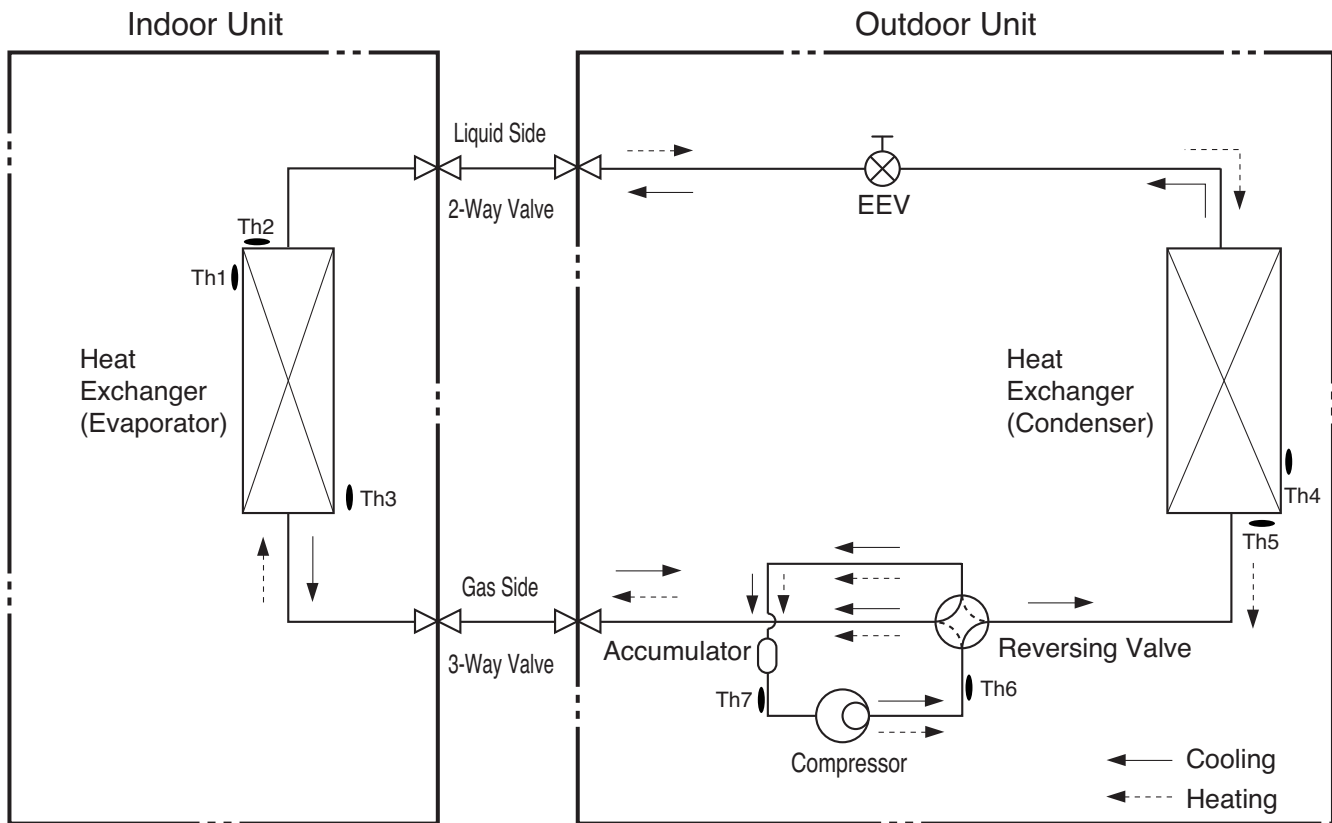
* For circuit breaker rating, please conform to local standards wherever necessary.

* Some of functions are slightly different depending upon models.

* The specification may be subject to change without prior notice for purpose of improvement.

* Capacity : based on 230V

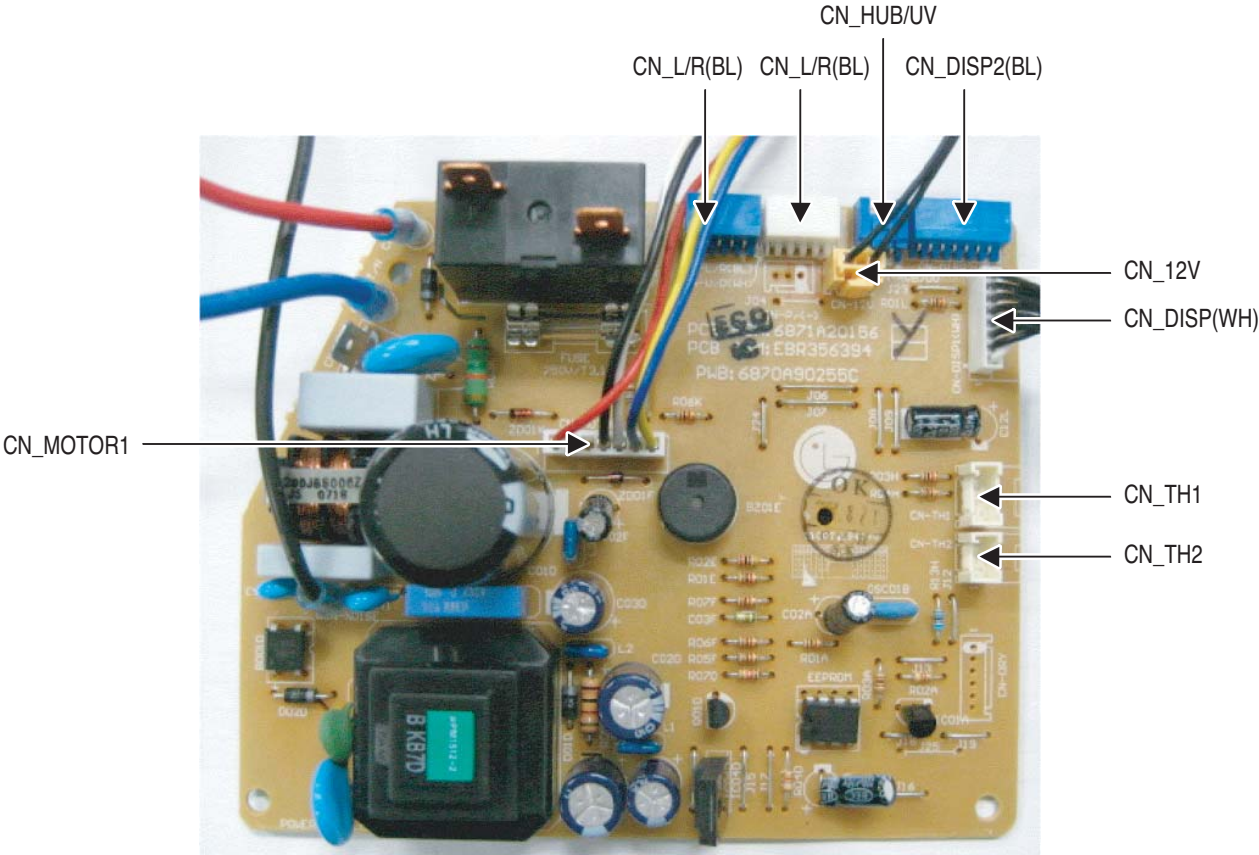
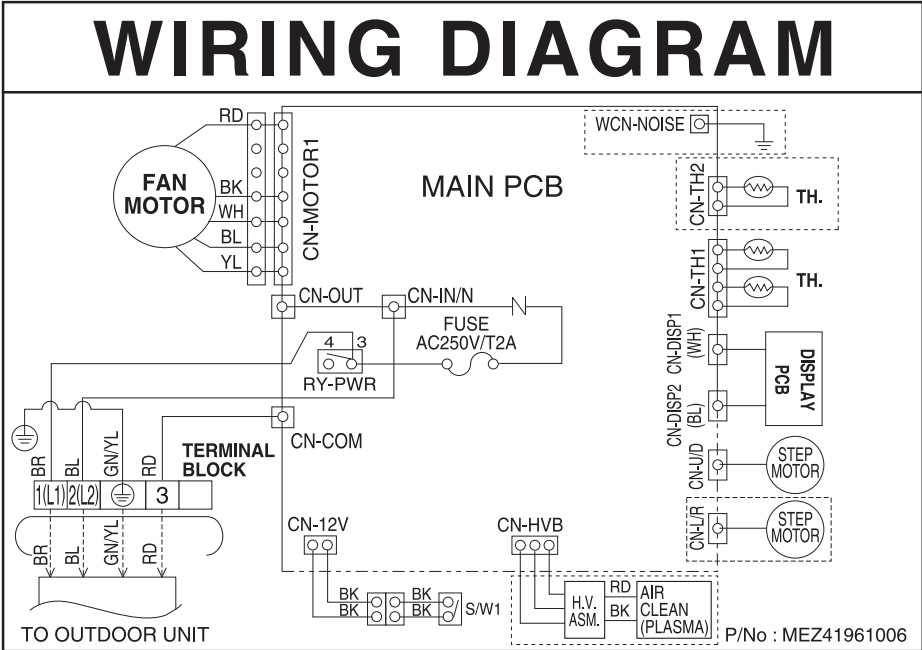
2. Piping Diagrams



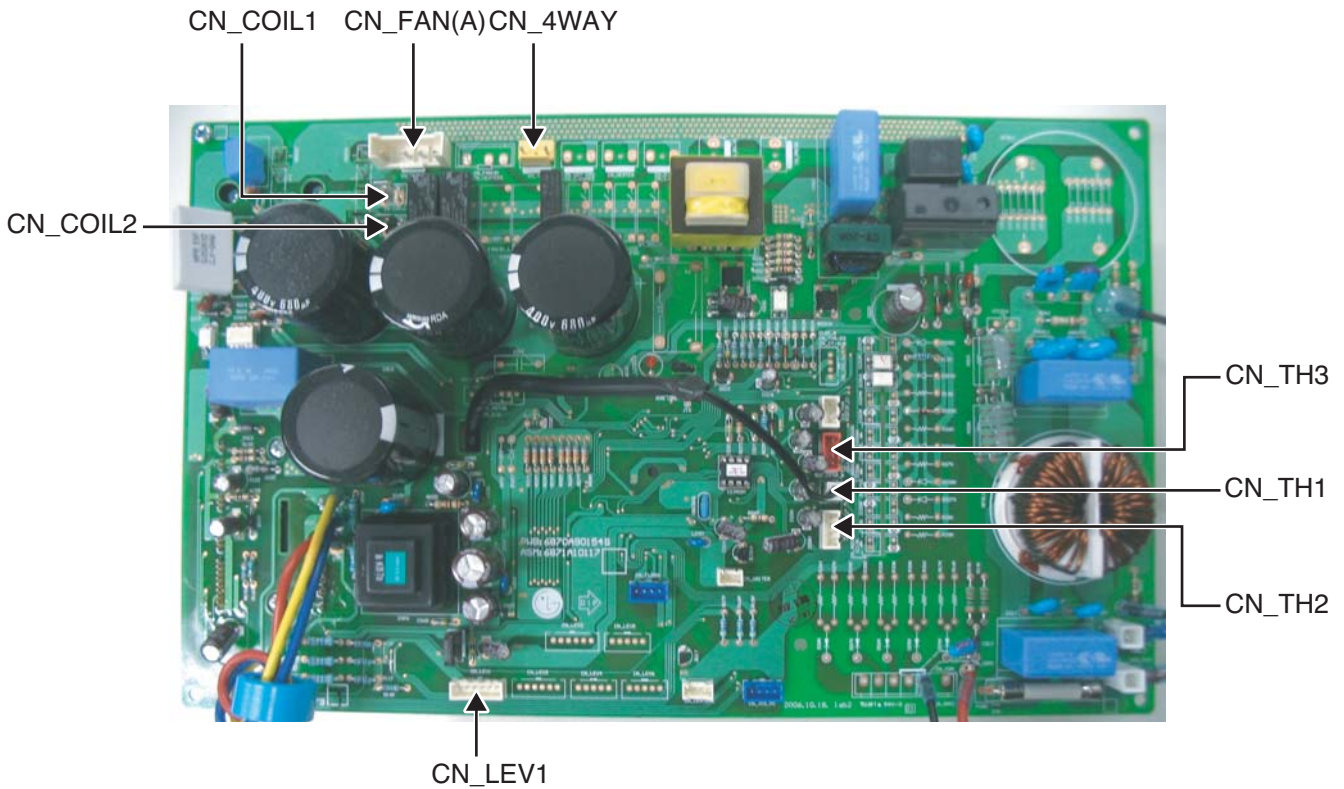
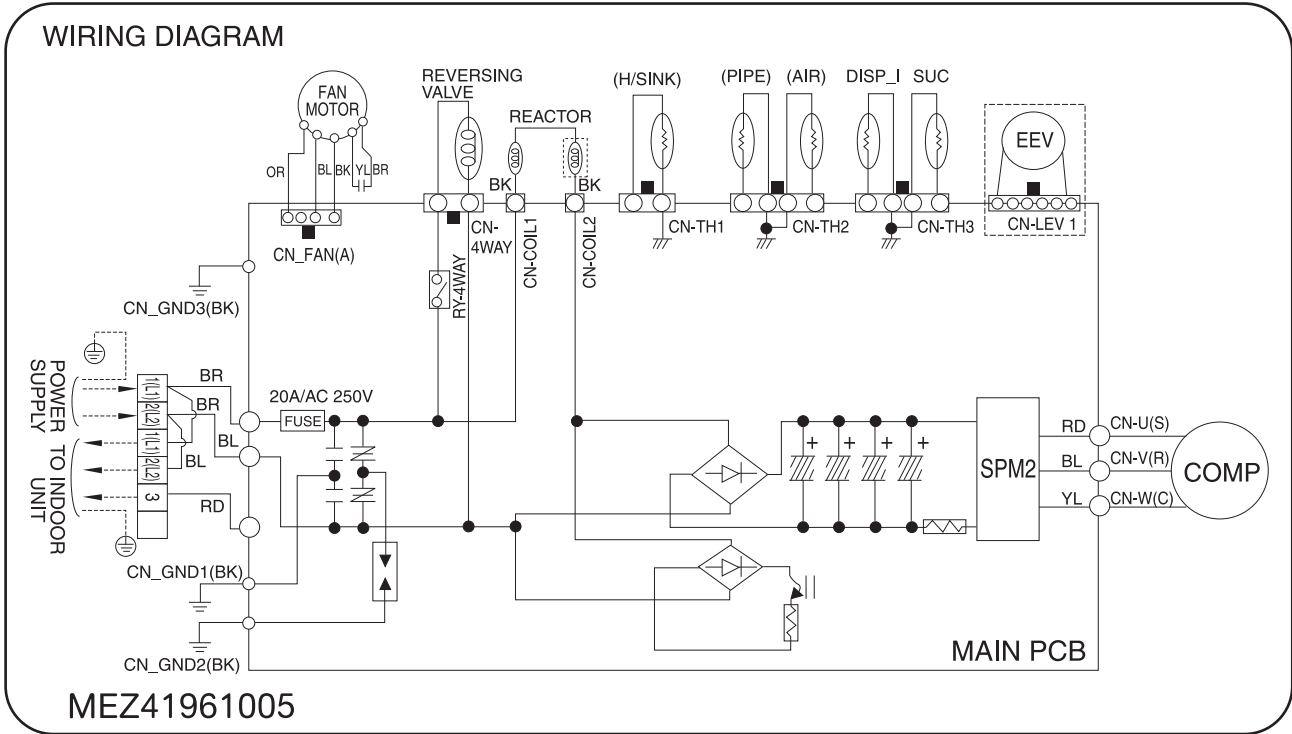
LOC.	Description	PCB Connector
Th1	Thermistor for indoor air temperature	CN_TH1(INDOOR)
Th2	Thermistor for evaporating temperature	CN_TH2(INDOOR)
Th3		CN_TH3(INDOOR)
Th4	Thermistor for outdoor air temperature	CN_TH2(OUTDOOR)
Th5	Thermistor for condensing temperature	
Th6	Thermistor for discharge pipe temperature	CN_TH3(OUTDOOR)
Th7	Thermistor for suction pipe temperature	

3. Wiring Diagrams

Indoor Unit

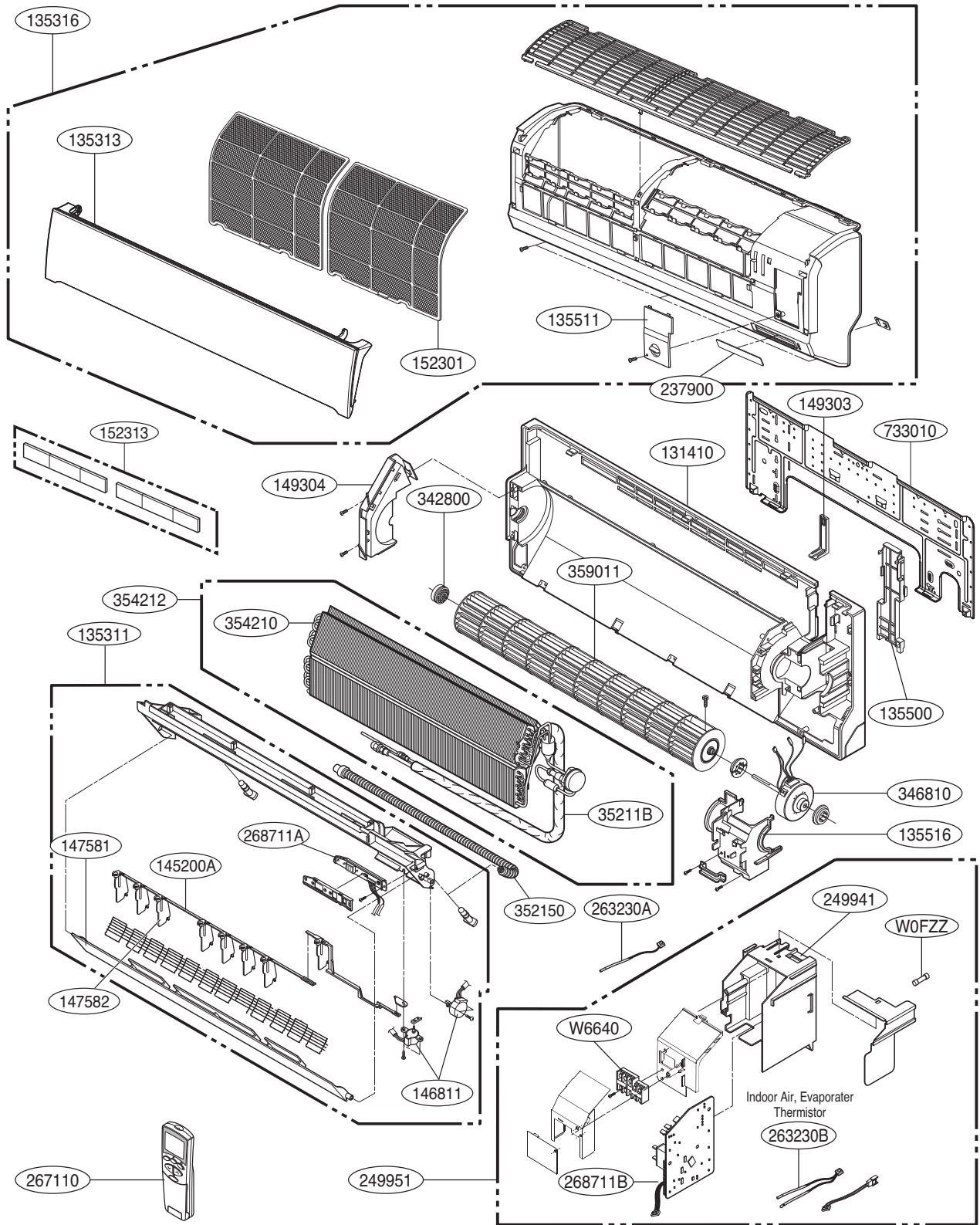


Outdoor Unit



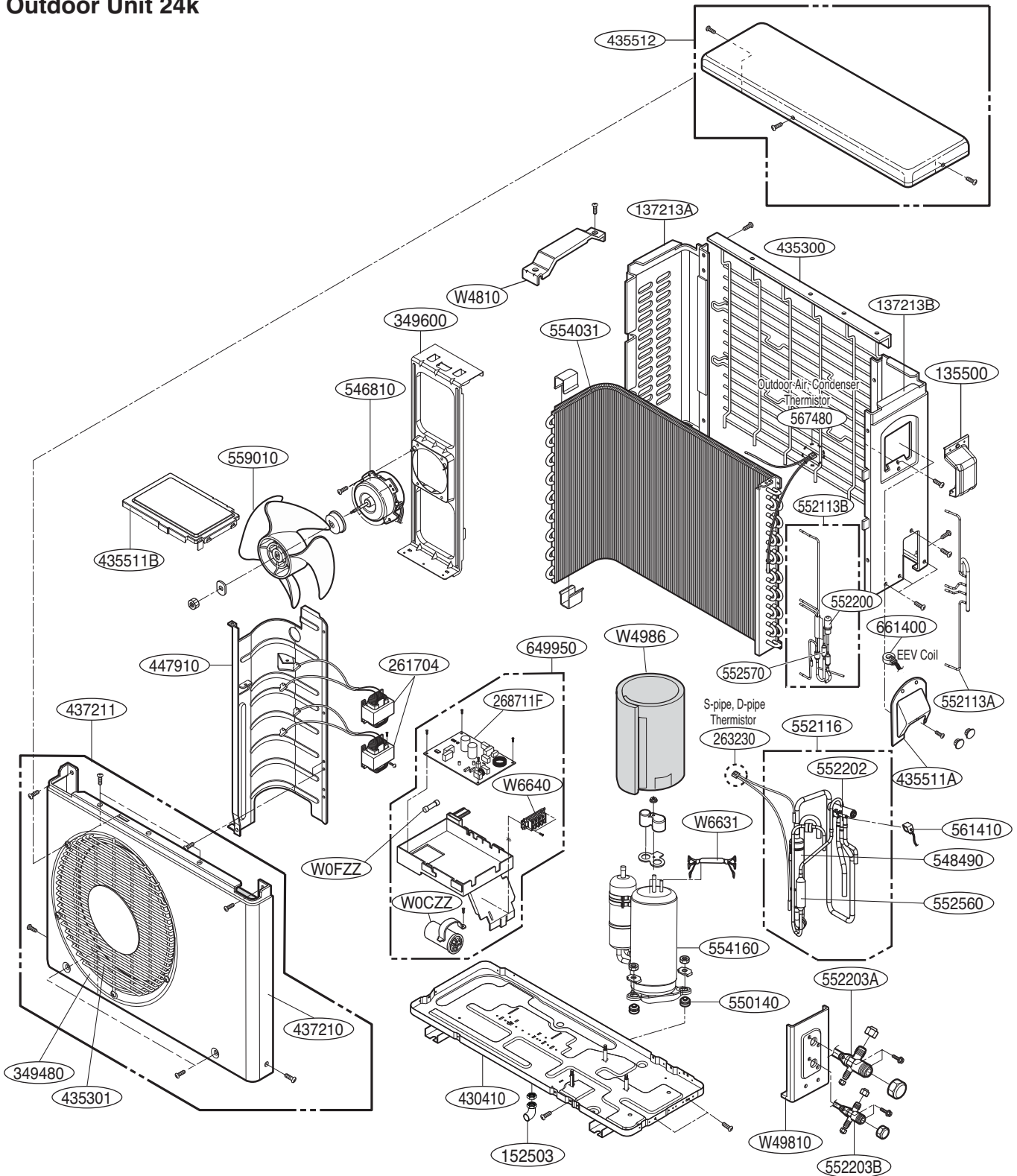
4. Exploded View

Indoor Unit



Note) * Please ensure GCSC since the replacement parts may be changed depending upon the buyer's request. Please check the correct parts in View RPL(Replacement Part List) on GCSC. (GCSC Website <http://biz.Lgservice.com>.)

Outdoor Unit 24k



Model	Classification	Description	Part Number	Location Number	Remark
AS-W2438*H1	Inverter Heat/ Pump	Compressor	5416A90055A	554160	-
		Harness, Single	6631A30099D	W6631	

Note) * Please ensure GCSC since the replacement parts may be changed depending upon the buyer's request.
 Please check the correct parts in View RPL(Replacement Part List) on GCSC.
 (GCSC Website <http://biz.Lgservice.com>.)



P/NO : MFL42684223

JANUARY, 2010