

This Owner's Manual is provided and hosted by [Appliance Factory Parts](#).



# BIG GREEN EGG MiniMax Owner's Manual

[Shop genuine replacement parts for BIG GREEN EGG  
MiniMax](#)



[Find Your BIG GREEN EGG Grill Parts - Select From 8 Models](#)

----- Manual continues below part list -----

## Available Replacement Parts for BIG GREEN EGG MiniMax

<a href="#">110114</a>	Stainless steel grid for small egg
<a href="#">120847</a>	Complete handle replacement kit S & Mini
<a href="#">117250</a>	Temperature Gauge, 3 inch Dial
<a href="#">118370</a>	GRILL GRIPPER
<a href="#">112187</a>	Fire Box
<a href="#">115171</a>	Draft Door Tips for Small, MiniMax.Mini

# Big Green Egg®



Big  
Green  
Egg®



**World's Best Smoker and Grill!**

The Original American Designed Ceramic Cooker

[www.biggreenegg.com](http://www.biggreenegg.com)

Welcome to the Big Green Egg, the Original American Designed Ceramic Cooker. Derived from an ancient clay cooker called a "kamado," the Big Green Egg has rewarded its owners with amazing results since 1974. This catalog will introduce you to this "EGGstraordinary" product, its advantages, and to what some "EGGheads" (dedicated owners of the Big Green Egg) have to say about the EGG®.

**Complete Outdoor Cooker** With its unparalleled flexibility of use, you can use your Big Green Egg for everything from grilling a steak to slow cooking a tender brisket to baking a loaf of bread. Vegetables – corn, potatoes, mushrooms, onions – and even desserts are superb. You can cook everything that you need for an entire meal at once!

**Moisture Retention** The Big Green Egg is made using space-age ceramics that were developed specifically for our product. The EGG retains heat and moisture so well that foods do not dry out! Meats and other foods undergo little or no shrinkage and are tastier because the natural juices and flavors stay locked inside.

**Easy to Start** The Big Green Egg reaches cooking temperature and is ready to use in approximately 10 minutes. Lighting the natural lump charcoal is quick using a natural fire starter or an electric lighter; no lighter fluid should be used. The inventive design of the EGG draws air into the lower draft door, through the charcoal, and out of the damper top.

**Easy Temperature Control** You can grill, smoke and bake at exact temperatures by adjusting the dampers. You have total control over the temperature, maintaining accuracy within a few degrees! The temperature gauge in the lid gives precise temperature readings from 0°F to 750°F.

*5 EGG options to choose from*

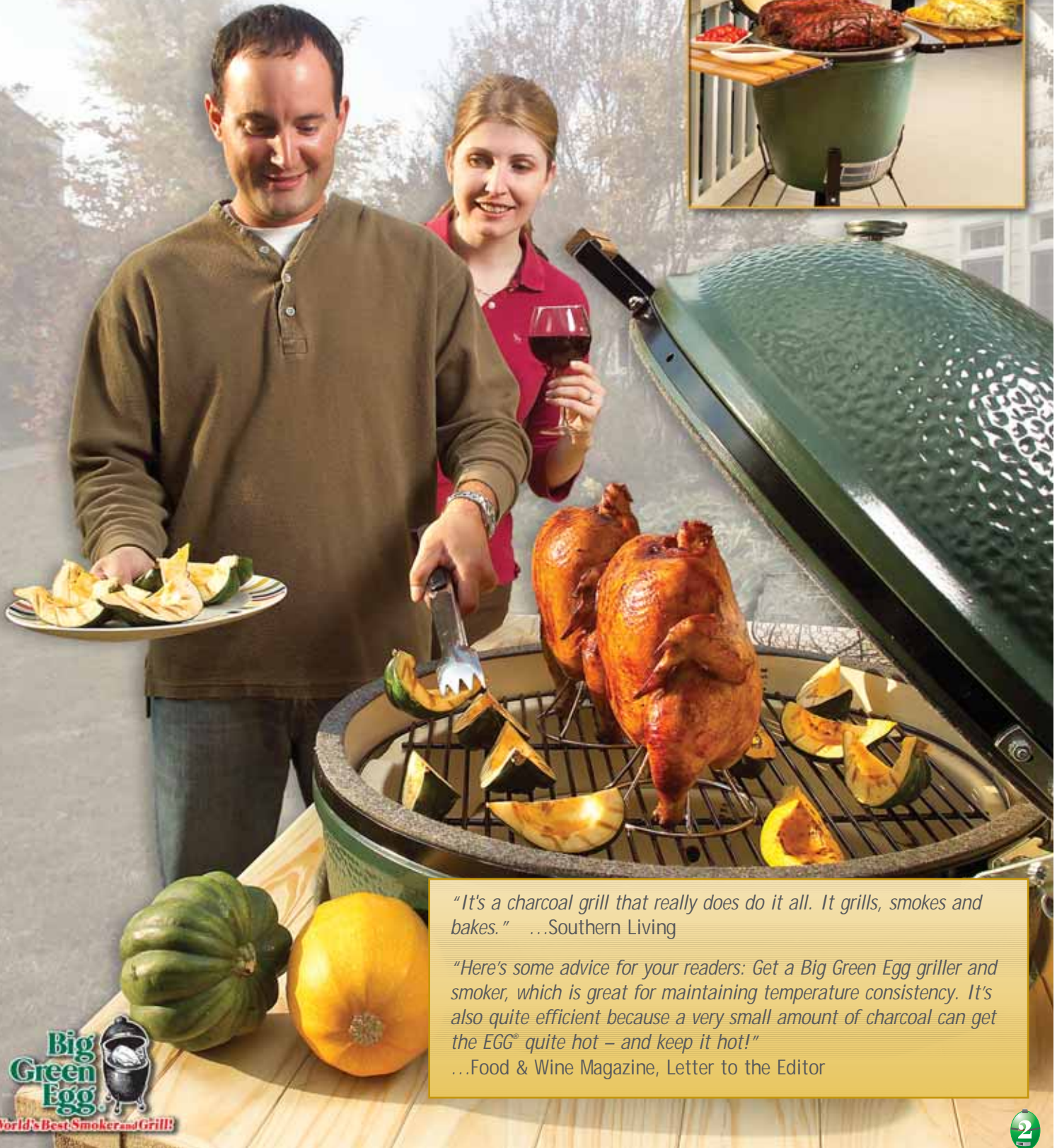
<b>XLarge</b>	205 lbs – 24" grid
<b>Large</b>	140 lbs – 18.25" grid
<b>Medium</b>	95 lbs – 15" grid
<b>Small</b>	65 lbs – 13" grid
<b>Mini</b>	30 lbs – 9.5" grid



## Versatile – Efficient – Easy to use

**Easy Clean Up** The Big Green Egg® exterior has a lifetime baked-on glaze that maintains its good looks and easily wipes clean. Inside, the heat burns off any grease build-up – like a self-cleaning oven.

**Year–Round Use** The Big Green Egg is easy to use in all climates, even in freezing temperatures, snow or rain.



*"It's a charcoal grill that really does do it all. It grills, smokes and bakes." ...Southern Living*

*"Here's some advice for your readers: Get a Big Green Egg griller and smoker, which is great for maintaining temperature consistency. It's also quite efficient because a very small amount of charcoal can get the EGG® quite hot – and keep it hot!"*

*...Food & Wine Magazine, Letter to the Editor*

# Big Green Egg®

## Your Big Green Egg includes...

- Precisely molded ceramics bonded with a green, non-toxic glazed exterior that won't fade, discolor or peel
- Hinged band for easy one-hand opening and closing
- Non-jamming, stainless steel draft door with a mesh screen that minimizes the potential for burns from stray sparks
- Cushioned gaskets for improved insulation and seal
- Heavy porcelain-coated grid for easy cleanup
- Dual function metal top for precise temperature control
- Precision external temperature gauge
- Instructional CD/DVD
- Manual

*"Green Eggs & fans - Music has Deadheads. Football has Cheeseheads. And Barbecue has Eggheads. You'll know this last group by the egg-shaped green grills they'll be standing next to, tongs in hand, looking to extol the virtues of the Big Green Egg. Their mantra goes something like this... It's foolproof, fuel-efficient, and can cook anything from fish and steak to pizza and pie. You have to get one. Now."*

Bon Appetit Magazine



The Big Green Egg® was introduced in 1974 and has earned its reputation as the World's Best Smoker and Grill. Since then, we have become the world's largest producer and international distributor of ceramic kamado style cookers. Your Big Green Egg investment is protected by a company with over 35 years of experience and a reputation for excellent customer service. Imitations have come and gone, but the Big Green Egg is the original. Look for the Big Green Egg logo molded into the lid!



The Big Green Egg is the most unique barbecue product on the market with more smoker and grill capabilities than all other conventional cookers combined.

**Smoker** The ceramic double-wall construction of the Big Green Egg makes it a superior smoker. Precisely controlled smoking temperatures give succulent results with turkey, ham, lamb, chicken, ribs and all other barbecued meat.

**Grill** You can sear steaks, hamburgers, pork chops, fish and seafood, resulting in a flavor-packed crust unmatched by other grills. High temperature grilling – even at 750°F – is quick and easy!

**Oven** The Big Green Egg bakes bread, biscuits, pizza, muffins, cookies, cakes and even pies better and quicker than your kitchen oven! You'll get a "brick oven" flavor and crust. You must try this to believe it! It's actually hard to burn foods or ruin a cookout in the Big Green Egg. The EGG® is, very forgiving – good news for beginners.



# Big Green Egg®

## Features of the Big Green Egg

- Ready to cook in 10 minutes with no lighter fluid
- Ceramic walls retain heat with accurate temperature control and no hot spots
- There is no need to add more charcoal while cooking; unburned charcoal can be reused
- No constant tending required; with enclosed cooking there are no grease flare-ups
- The Big Green Egg withstands temperature extremes from below 0°F to 1800°F
- Can be used year-round, even in freezing temperatures and rain
- Surface stays cooler than metal grills and is safer around children
- Weatherproof ceramics won't rust like metal
- Handsome, decorative and unique design



*Cooking in the Big Green Egg is easy – even your mistakes taste better than your successes cooked on an ordinary grill!*





- *The Big Green Egg is Number 1! More are sold each year than all other kamado style cookers combined.*

- *There are more Big Green Egg dealers in the US and abroad than dealers for all other kamado style cookers combined! If you move, it will be very convenient to locate a local dealer.*

- *It is estimated that seven out of ten kamado style cookers in use today are a Big Green Egg product.*



### Better than Water Smokers

A water smoker is made of metal and requires a pan of water to keep foods from drying out. Water smokers are very slow, taking up to 12 hours to smoke a turkey or ham. It is difficult to maintain temperatures, on a cold or blustery day they become inefficient. *The Big Green Egg®:*

- Cooks your ham or turkey to perfection in just a few hours
- Minimizes drying heat loss; your foods retain their moisture
- Dispenses with the need for messy water pans and frequent refilling
- Makes cleanup a breeze; there is no greasy mess
- Uses very little charcoal and produces very little ash

### Better than Gas Grills

The Big Green Egg offers the best of both charcoal and gas grilling options – fast start time and charcoal flavor. *The Big Green Egg:*

- Fires up in 10 minutes
- Cooks juicier, more succulent foods
- Allows you to grill meats rare, medium, well done, or anything in between
- Cooking time is faster than on a gas grill
- Reaches a hotter searing temperature than ordinary gas grills

### Better than Kettle Grills

Kettle grills rarely cook evenly and they tend to have hot spots. *The Big Green Egg:*

- Retains, circulates and radiates heat evenly for perfectly cooked meals
- The EGG® holds the heat – the kettle loses heat, especially in cold or windy weather
- The Big Green Egg keeps food moist – the kettle dries food out



**EGG Nest** *Rolling metal cart adds mobility*

- NEST-XL For XLarge
- NEST-LG For Large
- NEST-M For Medium
- NEST-SM For Small



**Cypress Tables – Long**

- YXL4 For XLarge, 60.5" long
- Y5TAB For Large, 59.5" long
- Y5TAB4 For Large, with wheels
- Y3TAB For Medium, 59.5" long
- Y3TAB4 For Medium, with wheels

### EGG Shelves

*Additional work space is added with convenient fold-down composite shelves*

- ESXL For XLarge, (set of 2)
  - ESL For Large, (set of 2)
  - ESM For Medium, (set of 2)
  - ESS For Small, (set of 2)
  - ES3XL For XLarge (middle shelf only)
  - ES3L For Large (middle shelf only)
- (Not available for Mini) (For use with EGG Nest only)*



**EGG Mates** *Attaches convenient fold-down shelves to your EGG (set of 2)*

- EMXL XLarge
  - EML Large
  - EMM Medium
- (Not available for Small or Mini) (For use with EGG Nest only)*



**Cypress Tables – Compact**

- Y5TABC For Large, 41" long
- Y5TABC4 For Large, with wheels
- Y3TABC For Medium, 41" long
- Y3TABC4 For Medium, with wheels
- Y1TABC For Small, 41" long
- Y1TABC4 For Small, with wheels



### Natural Fire Starter

*Ignites quickly without lighter fluid taste*

FS24 24 to a pack



### Electric Fire Starter

*Lights charcoal in minutes*

HL Electric (600 watt)

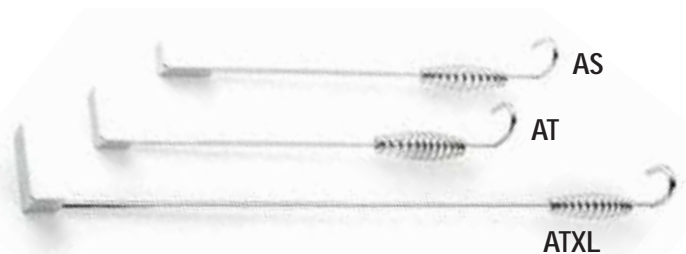
### Ventilated Vinyl Grill Covers

- VXLVC Covers XLarge in Nest
- V5VCA Covers Large or Medium in Nest
- V3VC Covers Small in Nest
- V5TC Long Table Cover
- V3TC Compact Table Cover



### Vinyl Grill Covers

- XLVC Covers XLarge in Nest
- 5VCA Covers Large or Medium in Nest
- 3VC Covers Small in Nest
- XLTC XLarge Table Cover
- 5TC Long Table Cover
- 3TC Compact Table Cover



AS

AT

ATXL



EAP



GG



### 100% Natural Lump Charcoal

*Cooks longer, contains no fillers, produces less ash*

CP 20 lb bag



### Ash Tools / Grill Gripper

- ATXL Ash Tool for XLarge
- AT Ash Tool for Large and Medium
- AS Ash Tool for Small and Mini
- EAP EGG Ash Pan
- GG Grill Gripper

*"If you can only own one grill in your lifetime—get the Big Green Egg®" ...CNBC – TV*



### Baking Stones

*Makes brick oven pizza, bread and baked goods*

- BSXL For XLarge
- BSL For Large
- BSM For Medium
- HMBSXL Half-moon Baking Stone for XLarge
- HMBSL Half-moon Baking Stone for Large



### Plate Setters

*For indirect cooking and baking*

- PSXL For XLarge
- PSL For Large
- PSM For Medium
- PSS For Small



### Half Moon Raised Grid w/Drip Pan

- HMRGXL For XLarge
- HMRGL For Large
- HMRGM For Medium
- HMRGS For Small
- HMDPXL Extra Drip Pan for XLarge
- HMDPL Extra Drip Pan for Large
- HMDPM Extra Drip Pan for Medium
- HMDPS Extra Drip Pan for Small

### Porcelain-coated V-Racks

*Use upright for roast or inverted for ribs*

- VRP For XLarge, Large and Medium
- VRPS For Small



### Dutch Oven

- DO Cast Iron Dutch Oven



### Drip Pans

- 13NSP 13" X 9" non-stick
- 9R Round 9" non-stick



### Cast Iron Cooking Grids

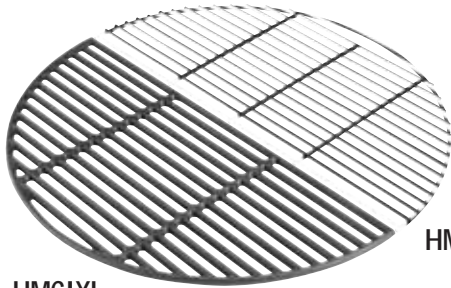
Great for searing

- HMCIXL Half-moon Cast Iron Grid for XLarge
- HM24P Half-moon Porcelain Coated Grid for XLarge
- 18CI For Large
- 15CI For Medium
- 13CI For Small

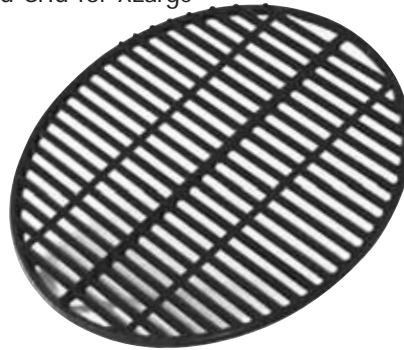


### Griddle 2 Sided

CIGHL Half Moon fits XLarge and Large



HMCIXL



HM24P

### Vertical Roasters

Holds poultry upright for perfect smoking and easier carving

- VTR Turkey Roaster
- VCR Chicken Roaster
- SC Sittin' Chicken Ceramic Roaster



3Tier

PSL

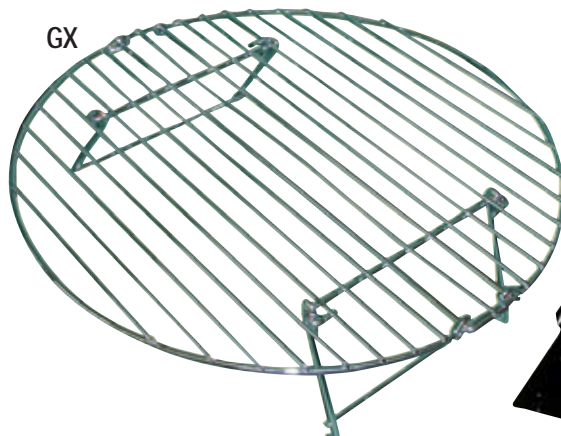
2LFR



### Grill Extenders

Create additional cooking capacity

- 3Tier Porcelain Coated Rack for Large (requires PSL and 2LFR)
- 2LFR 2" Fire Ring for Large
- GX Stainless Shelf fits XLarge, Large and Medium

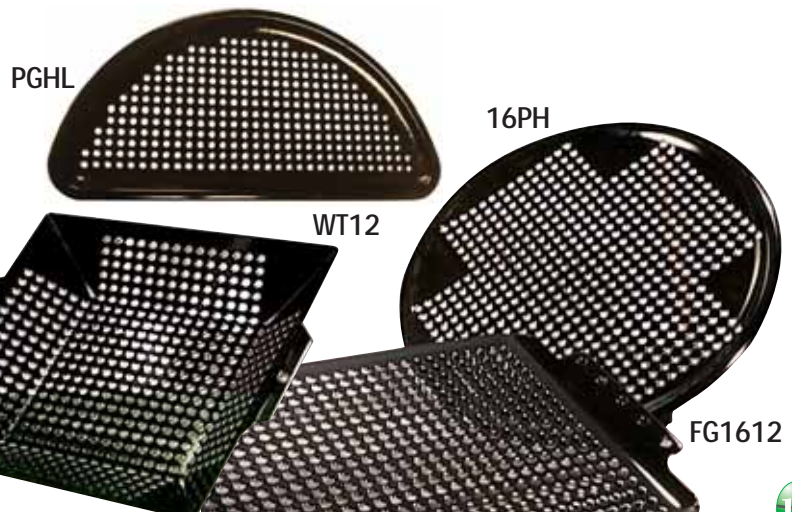


GX

### Specialty Grids

Porcelain Coated

- WT12 Wok Topper, fits XLarge and Large
- FG1612 16" X 12", fits XLarge and Large
- 16PH Round 16", fits XLarge and Large
- PGHL Half Moon Grid fits XLarge and Large



PGHL

WT12

16PH

FG1612



### Temperature Gauges

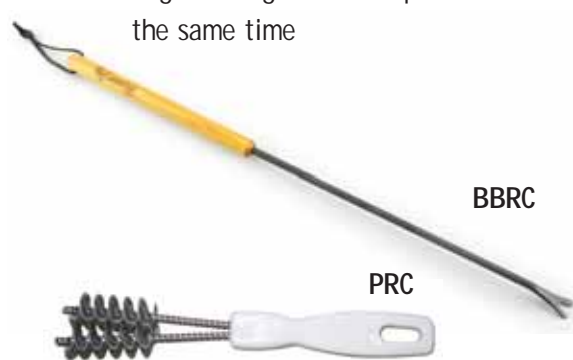
- TP External Precision to 750°F
- M Meat Gauge - stick & stay
- MP Meat Gauge - instant read
- DT Digital Thermometer
- IRT Instant Read Digital Thermometer
- ET-73 Remote Smoker Thermometer
- PT-12 Digital Pocket Thermometer

### PigTail Pigtail Meat Flipper



### Grid Cleaners

- PRC Porcelain Rack Cleaner
- BBRC Big Green Egg Grid Cleaner, 23" long, the angled design cleans top and bottom at the same time



### Wood Chips

Add great smoke flavor 1-1/2 lb. to 2 lb. bags

- |                   |               |
|-------------------|---------------|
| HC Hickory        | CHERRY Cherry |
| MC Mesquite       | PECAN Pecan   |
| SMC Sugar Maple   | ALDER Alder   |
| JACK Jack Daniels | APPLE Apple   |

Wood Chunks 5 or 6 lb. bags

- |             |              |
|-------------|--------------|
| HCL Hickory | MCL Mesquite |
|-------------|--------------|

### Grilling Planks

2 planks per package

- APLANK 15" Alder Grilling Planks
- MPLANK 15" Maple Grilling Planks
- CPLANK 15" Cedar Grilling Planks
- OPLANK 15" Red Oak Grilling Planks



Glove Sure Grip Oven Mitt

MIT Cotton Mit

Platter 18" Platter

OCB Oval Cutting Board



**EGGcelerator**

EC Fans the charcoal at initial lighting for faster start-up (fits XLarge, Large and Medium)



**Seasonings - Big Green Egg Private Label**

- MM BGE Private Blend (5.5 oz.)
- MML BGE Private Blend (16 oz.)
- MSM Sweet Maple (11.5 oz.)
- MGGP Green Garlic & Pepper (13.5 oz.)
- MGP Green Pecan (11.7 oz.)

**Big Green Egg Cook Books**

- CBEGG Big Green Egg Cookbook, For EGGheads
- MAN Big Green Egg Manual



CBEGG

MAN



HIS

**Promotional Materials**

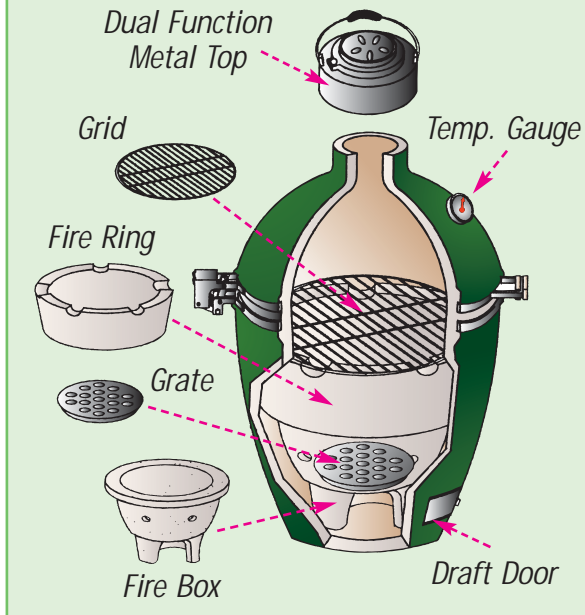
- KOZY Koozies with logo
- CAP Stonewashed Cap with Logo
- CAP-EGG Stonewashed Cap with EGGhead
- HIS Apron
- DVD Instructional DVD
- DVDEGG Eggtoberfest DVD
- TSHIRT T-Shirt (white, M-3XL)
- GOLF Golf Shirt (white, black or green, M-3XL)
- DENIM Denim Shirt (S-3XL)
- MOCK Mock Turtleneck (white, S-3XL)



CAP-EGG

CAP

### Big Green Egg Components Diagram



### Gasket Replacement Kit

- GKHDXL For XLarge
- GKHDL For Large
- GKHDM For Medium, Small and Mini



### Dual Function Metal Tops



- DFMT For XLarge, Large and Medium
- DFMST For Small
- DFMTLGE For Mini

### Bands

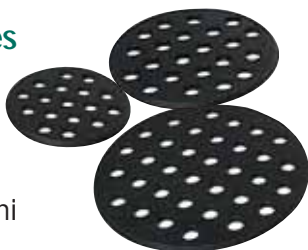
*Holds lid open for one hand operation*

- XLB Spring-assisted, for XLarge
- SABL Spring-assisted, for Large
- SABM Spring-assisted, for Medium
- SABS Spring-assisted, for Small
- OB Scissors-system, for Mini



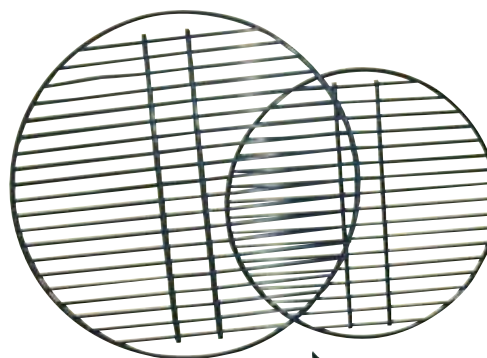
### Cast Iron Fire Grates

- XLFGC For XLarge
- LFGC For Large
- MFGC For Medium
- SFGC For Small & Mini



### Porcelain Coated Grids

- 24P For XLarge
- 18P For Large
- 15P For Medium
- 13P For Small
- 9P For Mini



### Fire Ring



- XLFR For XLarge
- LFR For Large
- MFR For Medium
- SFR For Small
- TFR For Mini

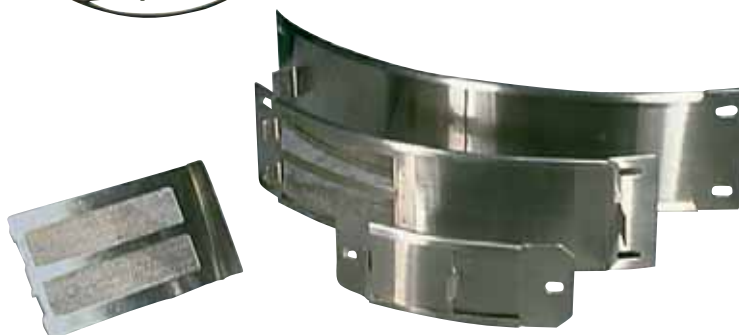
### Fire Box

- XLFB For XLarge
- LFB For Large
- MFB For Medium
- SFB For Small
- TFB For Mini



### Stainless Steel Draft Doors

- SSMDXL For XLarge w/Mesh Screen
- SSMD For Large and Medium w/Mesh Screen
- 1SSMD For Small and Mini w/Mesh Screen
- MESH-XL Mesh panel only for XLarge
- MESH-L Mesh panel only for Large and Medium
- MESH-S Mesh panel only for Small and Mini



If you are looking for a grill, you have found it here; the EGG® is the BEST! I've had mine for 18 months and it does it all. It will be the last grill you ever buy!  
*Michael... Monroe, LA*

A friend purchased the Big Green Egg® for our monthly cookouts. At first we were all skeptical, but after numerous PERFECT meals we are all in love with its capabilities! At this time I am recommending it to all my other friends and family! Definitely invest in this cooker if you are serious about BBQ or smoking. I'm sure you won't be disappointed!  
*Jim... Miami Beach, FL*

The Big Green Egg is the best, we enjoy using it year round, bourbon chicken is like none other. The new BGE Chiminea is also a great addition to our entertaining fun and complements its cousin.  
*Ed... Wanamassa, NJ*

Being from Memphis, I thought I had tasted the best in pork BBQ, until I cooked it on my new Big Green Egg! My kids still have fork wounds from fighting over leftovers.  
*Glen... Allen, VA*

I bought an EGG for my husband for Father's Day. I may never have to cook again! The BEST smoked salmon and ribs ever. We had guest over the other night and I think we sold two more EGGs for you!  
*Holly... Atlanta, GA*



I cannot tell you how happy my family is with the EGG! We just completed our 1st winter with the EGG and rain or snow it just cooks like there is no tomorrow! To be quite honest, I enjoy getting the EGG going in the middle of the winter and just watching the aroma drift to some of the neighbors' yards. As for my neighbors, they are still waiting for the weather to break to use their grills.  
*Doug... Ronkonkoma, NY*

Just got the Big Green Egg and now everyone who comes to dinner wants one. Can't believe how great the food is. No more deep fried turkey at Thanksgiving, now it will be cooked in our EGG.  
*Chris ... South Prairie, WA*

Just bought an EGG and gave it a workout over the weekend. Found it easy to use. I thought that regulating the heat might be a problem, however it was very easy to keep it at the 250°F mark and the pork butts were outstanding. The burgers on Friday night and the chickens on Sunday were all very flavorful. Also cooked some veggies and dessert on it too.... Yummy! I think we made the right choice when we bought the EGG.  
*Joe... Concord, NC*



Kevin Rathbun, EGGhead, executive chef and Atlanta restaurateur says, "I love the Big Green Egg. I especially like to cook 'low and slow'. Its moisture retention is better than any product out there!"



# Big Green Egg® *The World's Best Smoker and Grill*



## The Big Green Egg Chiminea

The Big Green Egg Chiminea offers the warmth and ambiance of an outdoor heater with our same ceramic technology. Plus it can be used as a portable barbecue grill – excellent for camping and tailgating. It withstands rain even when hot, uses wood or charcoal, has a screened front for safety and has an optional stand and cooking grid. The Big Green Egg Chiminea is a great addition to your deck or patio!

- CHIM Chiminea
- CHIMS Stand for Chiminea or Mini EGG®
- NEST-L Large Nest
- 9P Optional Cooking Grid

