

This Owner's Manual is provided and hosted by [Appliance Factory Parts](#).



# Alfresco ARTP-42 Owner's Manual

[Shop genuine replacement parts for Alfresco ARTP-42](#)



[Find Your Alfresco Grill Parts - Select From 126 Models](#)

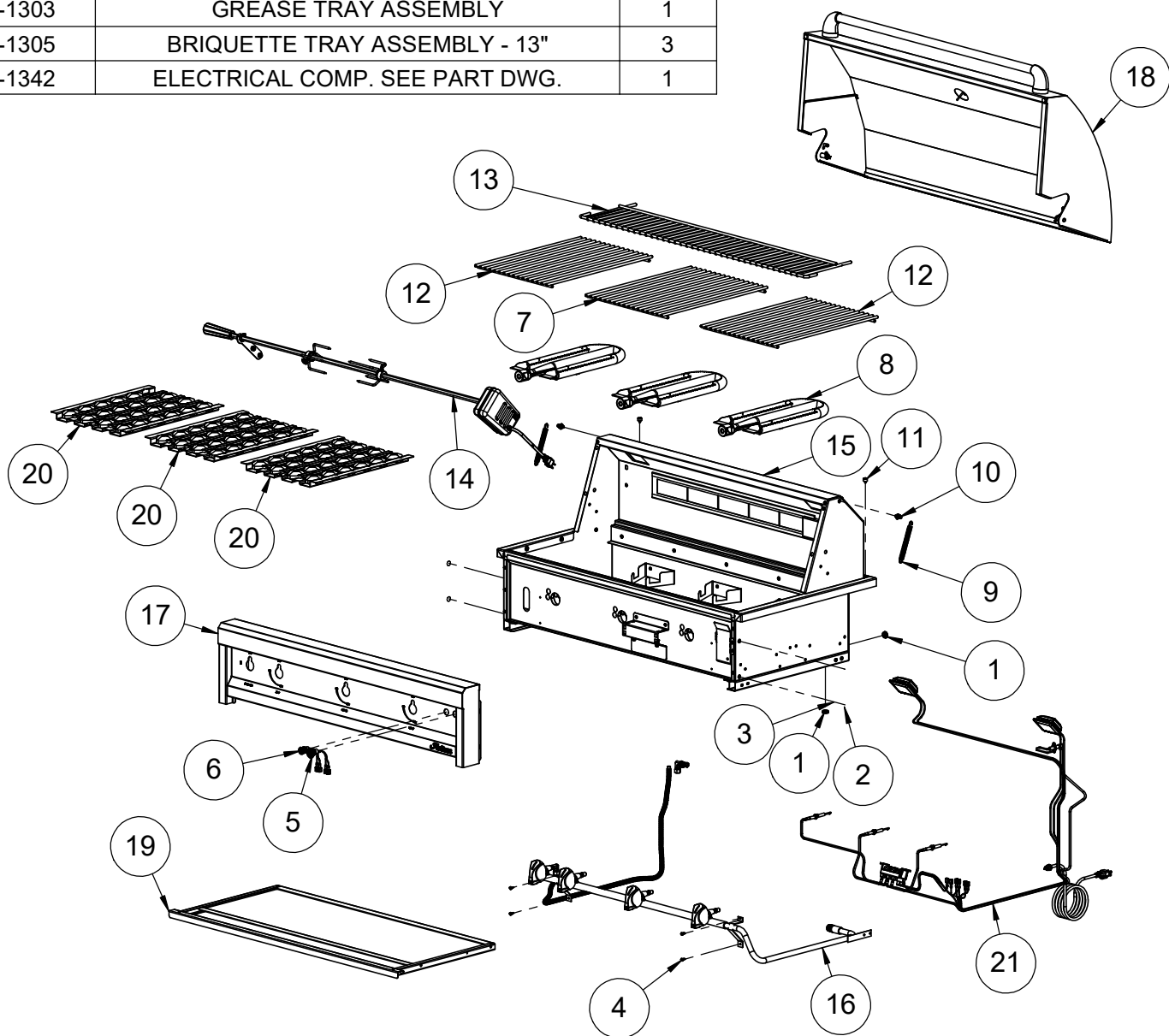
----- Manual continues below -----

# Artisan



***ARTP-42 Parts Manual***  
***Serial Numbers 20-00000 forward***

ITEM	MODEL	DESCRIPTION	QTY.
1	200-0004	GROMMET 9/16" OD, 1/16" MAT'L, 7/16" ID	2
2	200-0086	1/4-20 X 3/8 - TRUSS HEAD - PHILIPS SCREW	2
3	200-0087	WASHER - 1/4" SPRING LOCK- REGULAR - SS	2
4	200-0111	SCREW 8-18 X 1/2 - SELF TAP - 410 SS	4
5	210-0583	SWITCH - IGNITION - MOMENTARY [ON]/OFF	1
6	210-0584	SWITCH - LIGHT - LATCHING [ON/OFF]	1
7	290-0324	BBQ GRID - 13.8125" WIDE	1
8	290-0355	U-BURNER	3
9	290-0443	SPRING TEMPERED- .513 OD x 4.875 L	2
10	290-0447	HOOD SPRING LATCH	2
11	290-0469	BUMPER 1/2" Ø x 5/16" H - 600 °F	2
12	290-0501	BBQ GRID - 12.8125" WIDE	2
13	290-0504	WARMING GRID	1
14	510-1257	ROTISSERIE KIT	1
15	510-1280	MAIN BODY	1
16	510-1285	GAS MANIFOLD, SEE PARTS DRAWING	1
17	510-1286	FRONT PANEL	1
18	510-1289	FRONT HOOD WITH BUMPERS	1
19	510-1303	GREASE TRAY ASSEMBLY	1
20	510-1305	BRIQUETTE TRAY ASSEMBLY - 13"	3
21	510-1342	ELECTRICAL COMP. SEE PART DWG.	1



**Artisan**  
 SUPERIOR EQUIPMENT SOLUTIONS  
 7039 EAST SLAUSON AVENUE  
 COMMERCE, CA. 90040

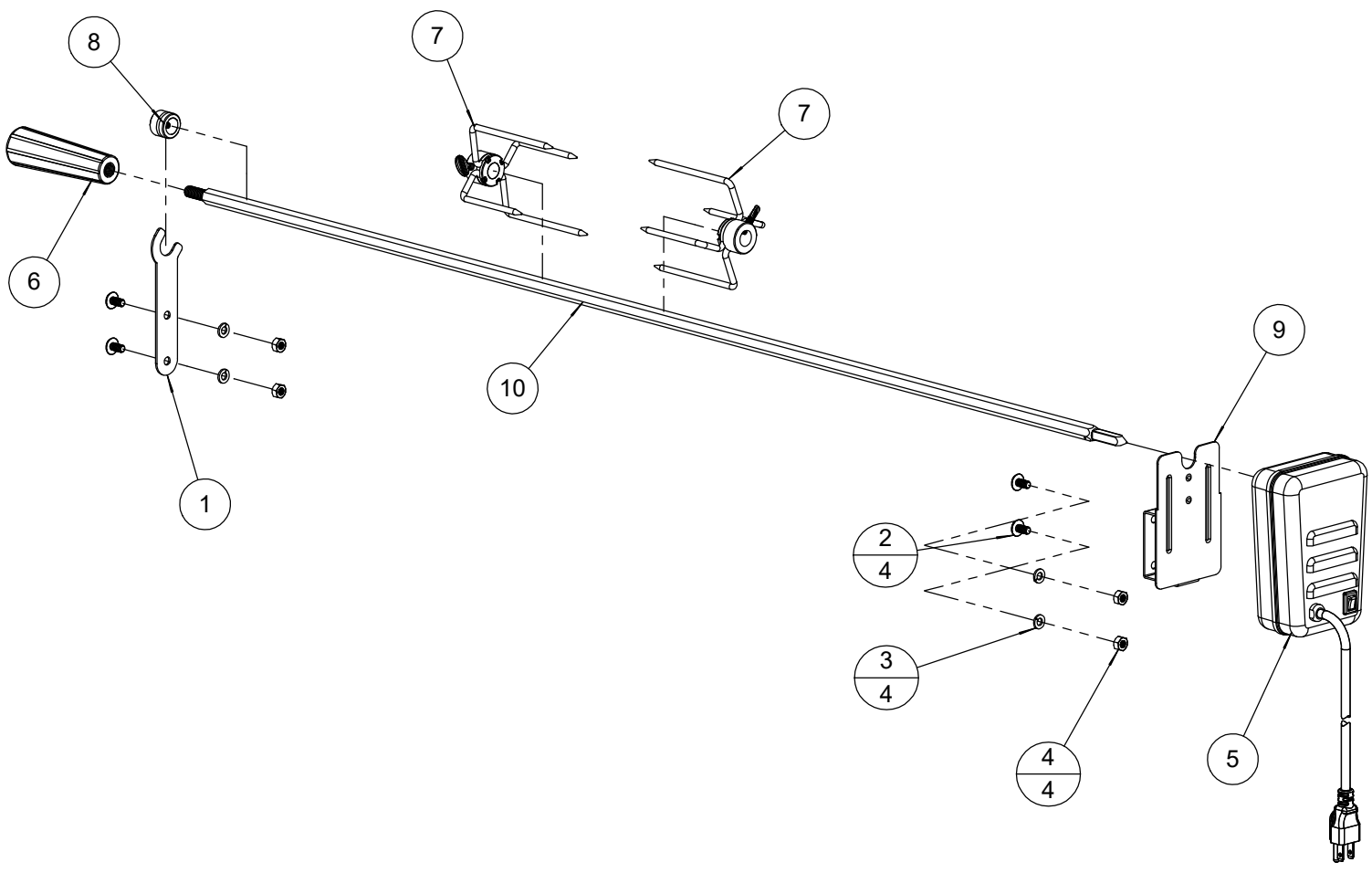
THE INFORMATION CONTAINED IN THIS DRAWING IS THE SOLE PROPERTY OF SUPERIOR EQUIPMENT SOLUTIONS INC. ANY REPRODUCTION IN PART OR AS A WHOLE WITHOUT WRITTEN PERMISSION FROM SUPERIOR EQUIPMENT SOLUTIONS, INC. IS PROHIBITED.  
**DRAWN BY:** J PELAYO  
**CREATED:** April 6, 2020

**PROJECT TITLE:**  
**ARTP-42**  
**DRAWING TITLE:**  
**BARBECUE MAIN ASSEMBLY**

**DRAWING NO.:**  
**500-024**  
**SHEET 1 OF 1**

**BILL OF MATERIALS**

ITEM	PART N°	DESCRIPTION	QTY
1	100-2366	ROTISSERIE HOLDER BRACKET	1
2	200-0057	SCREW 1/4-20 X 1/2 - TRUSS HEAD - PHILPS	4
3	200-0087	WASHER - 1/4" SPRING LOCK- REGULAR - SS	4
4	200-0090	1/4-20 - DOUBLE CHAMFER - HEX NUT	4
5	210-0493	ROTISSERIE MOTOR	1
6	290-0330	ROTISSERIE SPEAR HANDLE	1
7	290-0331	ROTISSERIE FORK ASSEMBLY	2
8	290-0332	ROTISSERIRE BUSHING ASSEMBLY	1
9	290-0333	ROTISSERIE MOTOR MOUNT	1
10	290-0500	ROTISSERIE SPEAR 42" BBQ	1



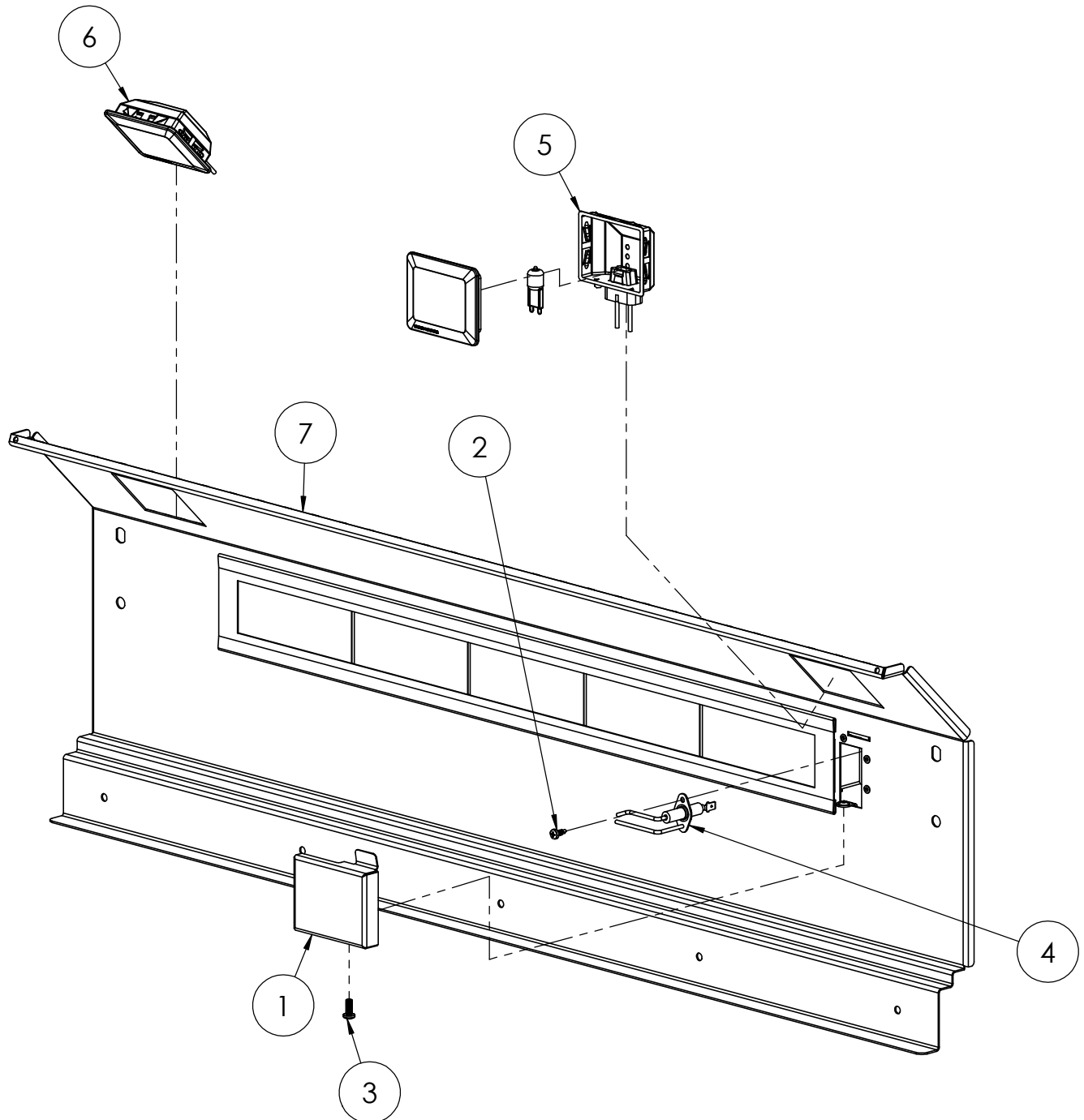
**Artisan™**  
 SUPERIOR EQUIPMENT SOLUTIONS  
 1085 BIXBY DRIVE  
 CITY OF INDUSTRY, CA. 91745

THE INFORMATION CONTAINED IN THIS DRAWING IS THE SOLE PROPERTY OF SUPERIOR EQUIPMENT SOLUTIONS INC. ANY REPRODUCTION IN PART OR AS A WHOLE WITHOUT WRITTEN PERMISSION FROM SUPERIOR EQUIPMENT SOLUTIONS, INC. IS PROHIBITED.  
**DRAWN BY: ADRIAN CRISCI**  
**LAST SAVED: 12/12/2019 10:24:07 AM**

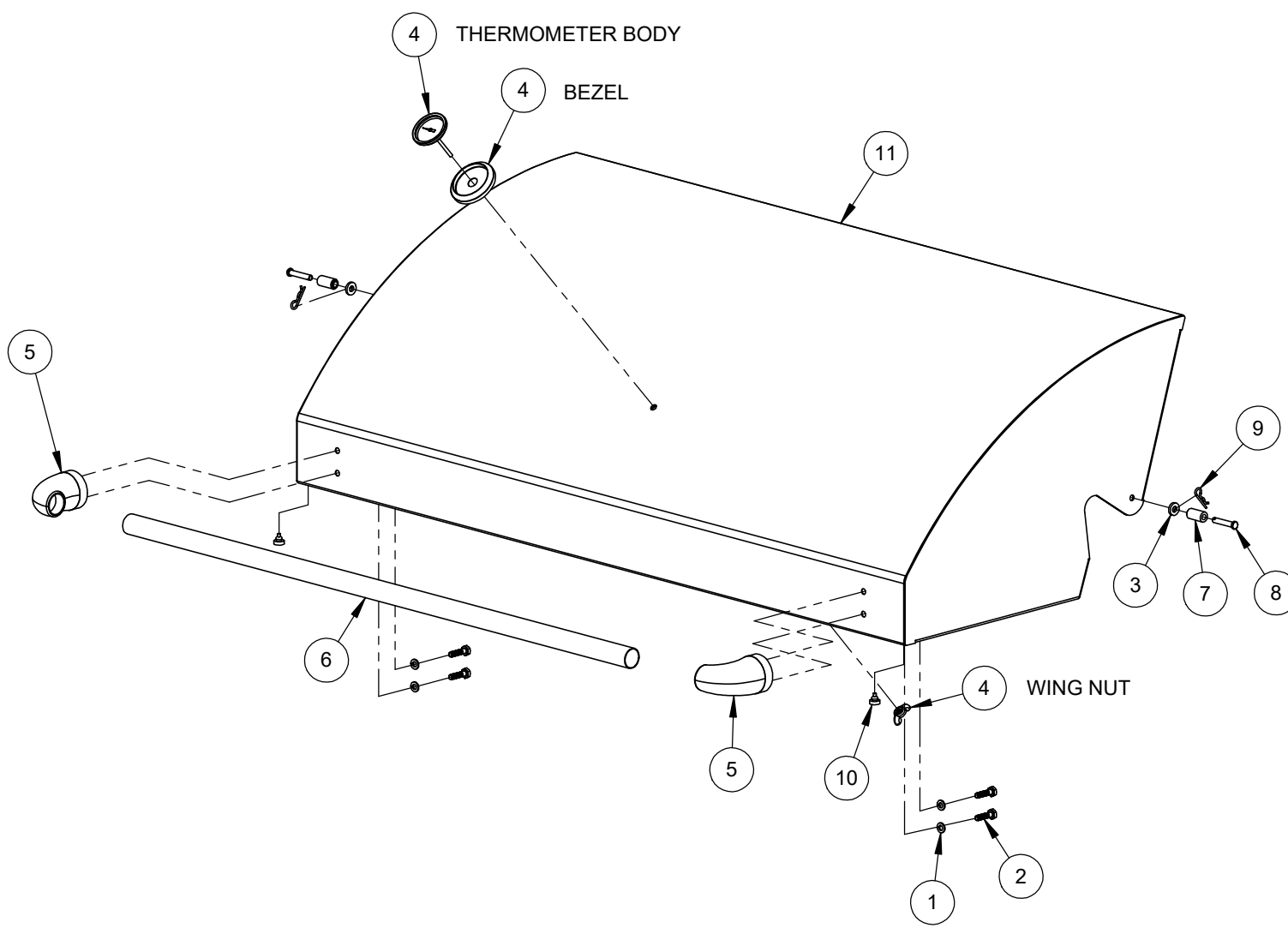
**PROJECT TITLE:**  
**ARTP-42**  
**DRAWING TITLE:**  
**ROTISSERIE KIT**

**DRAWING NO.:**  
**510-12**  
**SHEET 1 C**

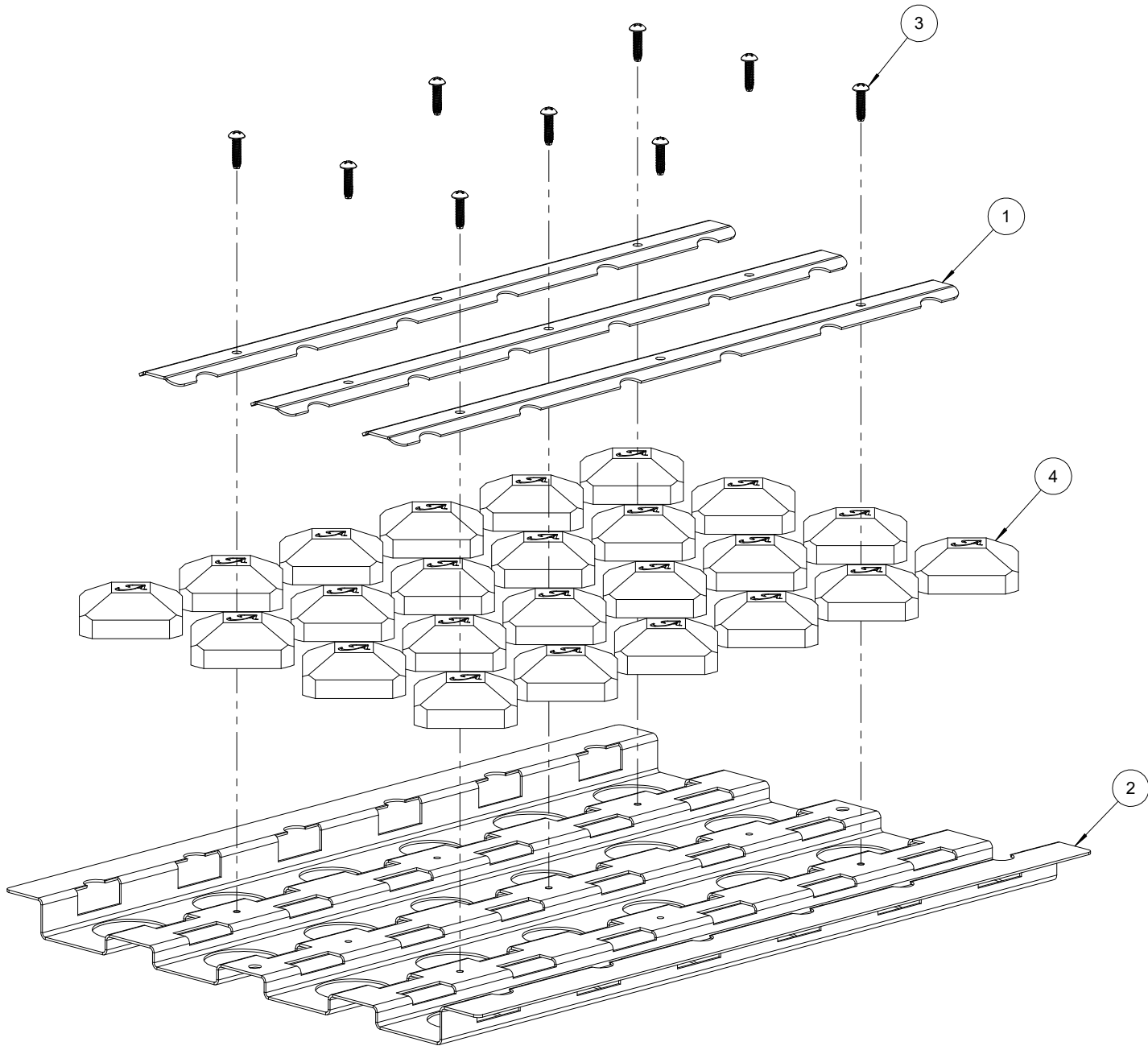
ITEM	PART NUMBER	DESCRIPTION	QTY
1	100-2363	ROTISSERIE ELECTRODE COVER	1
2	200-0111	SCREW 8-18 X 1/2 - SELF TAP - 410 SS	1
3	200-0267	10-32 X 1/2 - PAN HEAD - PHILLIPS SCREW	1
4	210-0240	ELECTRODE - DUAL TIP "L" SHAPE- ROTISSERIE	1
5	210-0488	LAMP FIXTURE ASSEMBLY - G9/120V/40W	1
6	210-0660	LAMP FIXTURE ASSEMBLY - G9/120V/40W	1
7	510-1301	ROTISSERIE PANEL - WELDED PARTS	1



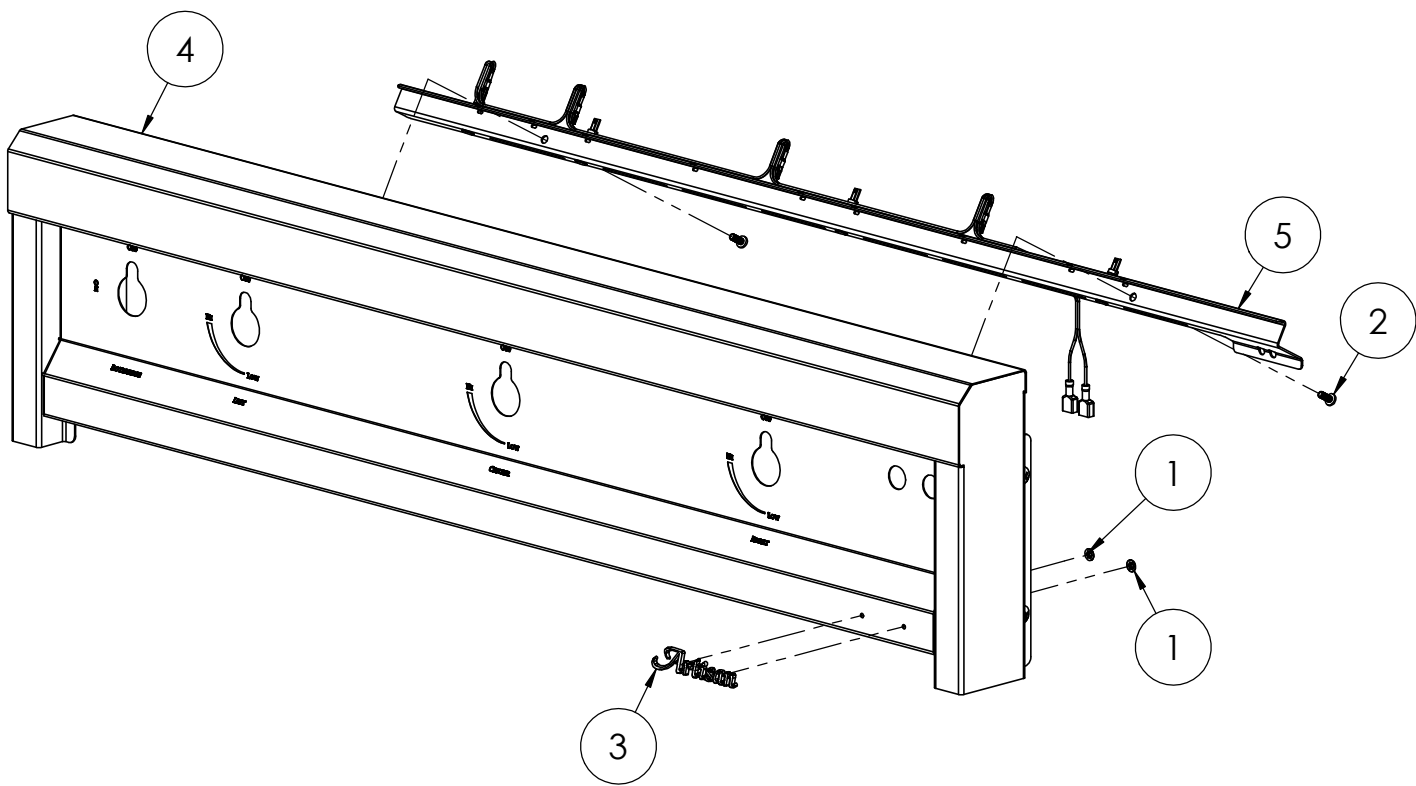
BILL OF MATERIAL			
NO.	PART #	DESCRIPTION	QTY
1	200-0087	WASHER - 1/4" SPRING LOCK- REGULAR - SS	4
2	200-0091	HH- HD - 1/4-20 x 1 x .75 THREAD	4
3	200-0092	1/4 X 1/8 X 5/8 FLAT WASHER - SPACER	2
4	210-0490	THERMOMETER ASSEMBLY	1
5	290-0063	HANDLE - END CAP ASSEMBLY	2
6	290-0510	42" BBQ - FRONT HOOD HANDLE BAR	1
7	290-0444	SPACER - 1/2" OD x 1/4" ID	2
8	290-0445	CLEVIS PIN - 1/4"Ø x 1-3/8	2
9	290-0448	COTTER PIN - HAIRPIN 1/4" ~ 3/8" Pin Ø x 1-1/4" L x 5/64" WIRE	2
10	290-0465	BUMPER 600°F 1/2" DIA x 5/32" HEAD	2
11	510-1290	FRONT HOOD - WELDED PARTS - W/BUMPER	1



ITEM	MODEL	DESCRIPTION	QTY.
1	100-1895	BRIQUETTE LOCK BAR	3
2	100-3194	BRIQUETTE TRAY BASE - 13" WIDE	1
3	200-0314	SCREW 8-32 x 5/8", PAN HEAD, PHILLIPS THREAD CUTTER TYPE F	9
4	265-0005	CERAMIC BRIQUETTE W/ LOGO	24



ITEM	PART NUMBER	DESCRIPTION	QTY
1	200-0093	WASHER - PUSH LOCK 1/8" ID X 3/8" OD (LOGO)	2
2	200-0267	10-32 X 1/2 - PAN HEAD - PHILLIPS SCREW	2
3	290-0356	ARTISAN LOGO	1
4	510-1287	FRONT PANEL - WELDED PARTS	1
5	510-1302	FRONT PANEL - LIGHT ASSEMBLY	1



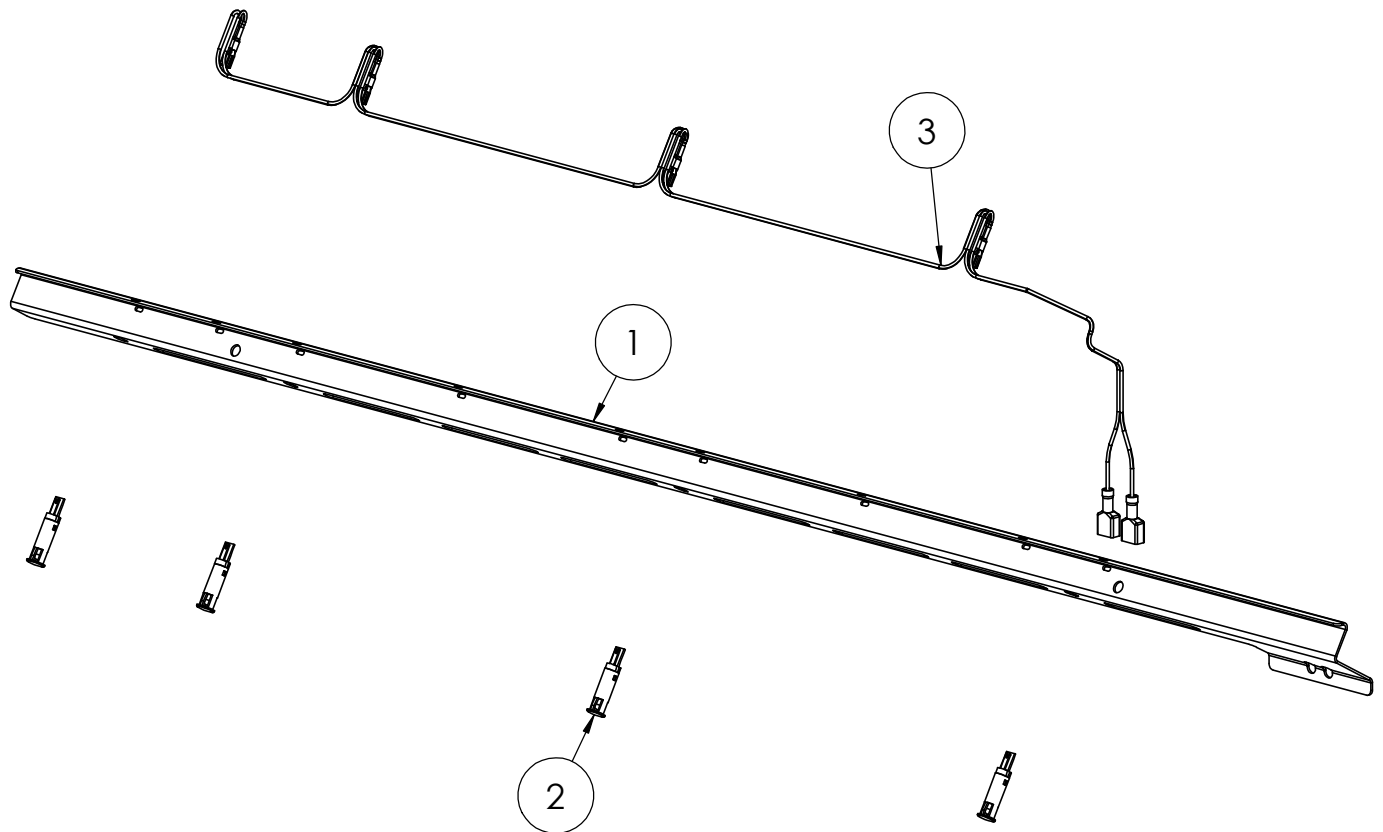
**Artisan**  
 SUPERIOR EQUIPMENT SOLUTIONS  
 7039 EAST SLAUSON AVENUE  
 COMMERCE, CA. 90040

THE INFORMATION CONTAINED IN THIS DRAWING IS THE SOLE PROPERTY OF SUPERIOR EQUIPMENT SOLUTIONS INC. ANY REPRODUCTION IN PART OR AS A WHOLE WITHOUT WRITTEN PERMISSION FROM SUPERIOR EQUIPMENT SOLUTIONS, INC. IS PROHIBITED.  
**DRAWN BY:** Jpelayo  
**CREATED:** 5/11/2018 9:18:43 AM

**PROJECT TITLE:**  
 ARTP-42  
**DRAWING TITLE:**  
 FRONT PANEL

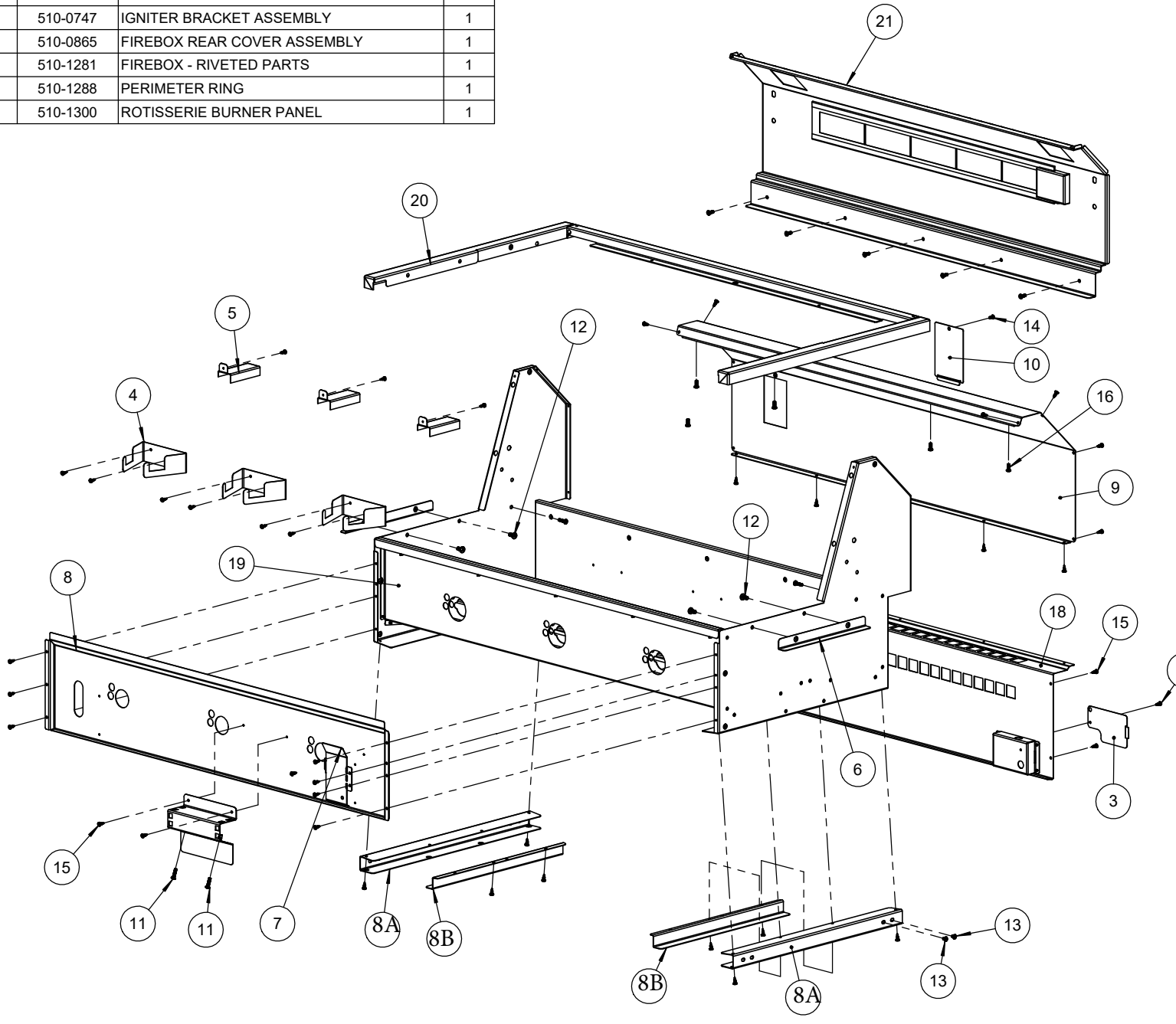
**DRAWING NO.:**  
 510-128  
**SHEET 1 C**

ITEM	PART NUMBER	DESCRIPTION	QTY
1	100-3177	FRONT PANEL LIGHT BRACKET	1
2	210-0624	LIGHT - BLUE LED - 8mm Ø - 110 VAC	4
3	210-0629	FRONT PANEL - LIGHT ASSEMBLY	1



**BILL OF MATERIAL**

NO.	PART #	DESCRIPTION	QTY
1	100-2024	FIREBOX TRAY SLIDE PART-A	2
2	100-2025	FIREBOX TRAY SLIDE PART-B	2
3	100-2370	ELECTRICAL BOX COVER	1
4	100-2373	BURNER BRACKET	3
5	100-2374	IGNITER COVER - STANDARD	3
6	100-2378	PERIMETER RING BRACKET	2
7	100-2666	BUTTONS SHIELD - BRACKET	1
8	100-3167	FIREWALL	1
9	100-3173	BACK HOOD - REAR COVER	1
10	150-2335	IR ORIFICE ACCESS COVER	1
11	200-0057	SCREW 1/4-20 X 1/2 - TRUSS HEAD PHILLIPS	6
12	200-0064	1/4-20 X 1/2 - PAN HEAD - PHILIPS SCREW	4
13	200-0082	10-32 X 1/4 - PAN HEAD - PHILIPS SCREW	2
14	200-0100	SCREW 8-32 X 3/8" - PAN HEAD - PHILIPS - SS	1
15	200-0111	SCREW 8-18 X 1/2 - SELF TAP - 410 SS	48
16	200-0267	10-32 X 1/2 - PAN HEAD - PHILLIPS SCREW	10
17	510-0747	IGNITER BRACKET ASSEMBLY	1
18	510-0865	FIREBOX REAR COVER ASSEMBLY	1
19	510-1281	FIREBOX - RIVETED PARTS	1
20	510-1288	PERIMETER RING	1
21	510-1300	ROTISSERIE BURNER PANEL	1



**Artisan™**  
 SUPERIOR EQUIPMENT SOLUTIONS  
 1085 BIXBY DRIVE  
 CITY OF INDUSTRY, CA. 91745

THE INFORMATION CONTAINED IN THIS DRAWING IS THE SOLE PROPERTY OF SUPERIOR EQUIPMENT SOLUTIONS INC. ANY REPRODUCTION IN PART OR AS A WHOLE WITHOUT WRITTEN PERMISSION FROM SUPERIOR EQUIPMENT SOLUTIONS, INC. IS PROHIBITED.  
**DRAWN BY:** jplayo  
**LAST SAVED:** 4/7/2020 1:52:53 PM

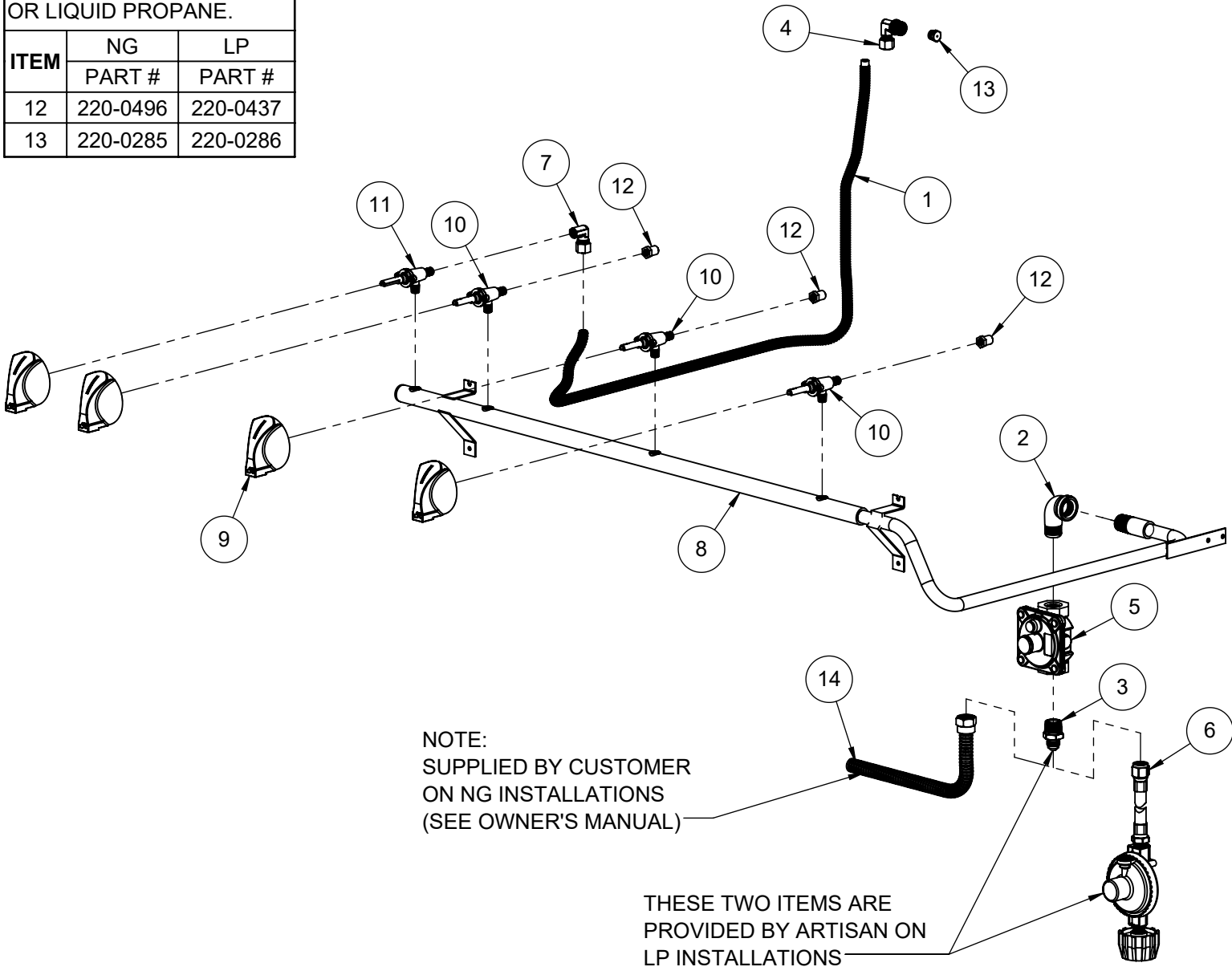
**PROJECT TITLE:**  
**ARTP-42**  
**DRAWING TITLE:**  
**MAIN BODY**

**DRAWING NO.:**  
**510-128**  
**SHEET 1 OF 3**

ITEM	PART NUMBER	DESCRIPTION	QTY
1	100-1949	ROTISSERIE LINE - 36" L x 3/8" ID	1
2	200-0274	ELBOW 90° - CAST IRON - 1/2" FPT x 1/2" MPT	1
3	220-0275	NIPPLE - 1/2" MPT X 3/8" OD FL	1
4	220-0276	ELBOW .375 MPT x .375 COMP	1
5	220-0280	REGULATOR GAS - MAXITROL RV48CL440002	1
6	220-0301	REGULATOR - LP GAS W/36" HOSE - CONN. GREEN	1
7	220-0399	ELBOW 1/8-27 FPT x 3/8" Ø COMPRESSION	1
8	220-0495	GAS MANIFOLD	1
9	290-0030	KNOB BBQ - ALFRESCO "A" LETTER	4
10	290-0320	GAS VALVE - 1/8-27 MPT X 1/8-27 NPTS	3
11	290-0321	VALVE - GAS - [ON/OFF] FLOW - 1/8-27 MPT X 1/8-27 NPTS	1
12	SEE NOTE	ORIFICE - MAIN BURNER - (SEE NOTE FOR SIZING)	3
13	SEE NOTE	ORIFICE - IR ROTISSERIE UNIT (SEE NOTE FOR SIZING)	1
14	SEE NOTE	1/2" ODF - FLEX SS GAS LINE (BY CUSTOMER)	1

**NOTE:** ORIFICE OR VALVE ASSEMBLY TO CHANGE ACCORDING TO FUEL SUPPLY: NATURAL GAS OR LIQUID PROPANE.

ITEM	NG	LP
	PART #	PART #
12	220-0496	220-0437
13	220-0285	220-0286



ITEM	MODEL	DESCRIPTION	QTY.
1	200-0009	HEYCO STRESS RELIEF BUSHING # 1200 SR 6N3-4	1
2	210-0240	ELECTRODE - DUAL TIP "L" SHAPE- ROTISSERIE	1
3	210-0287	BLACK POWER SUPPLY CORD 125V 15A 14/3 X 8FT LONG	1
4	210-0465	IGNITER MODULE (4 POINTS)	1
5	210-0488	LAMP FIXTURE ASSEMBLY - G9/120V/40W	1
6	210-0491	U-BURNER ELECTRODE TIP	3
7	210-0660	LAMP FIXTURE ASSEMBLY - G9/120V/40W	1
8	210-0541	IGNITER WIRE KIT	1
9	210-0640	HARNESS	1

