

This Owner's Manual is provided and hosted by [Appliance Factory Parts](#).



Alfresco AAE-32 Owner's Manual

[Shop genuine replacement parts for Alfresco AAE-32](#)



[Find Your Alfresco Grill Parts - Select From 126 Models](#)

----- Manual continues below -----

Artisan

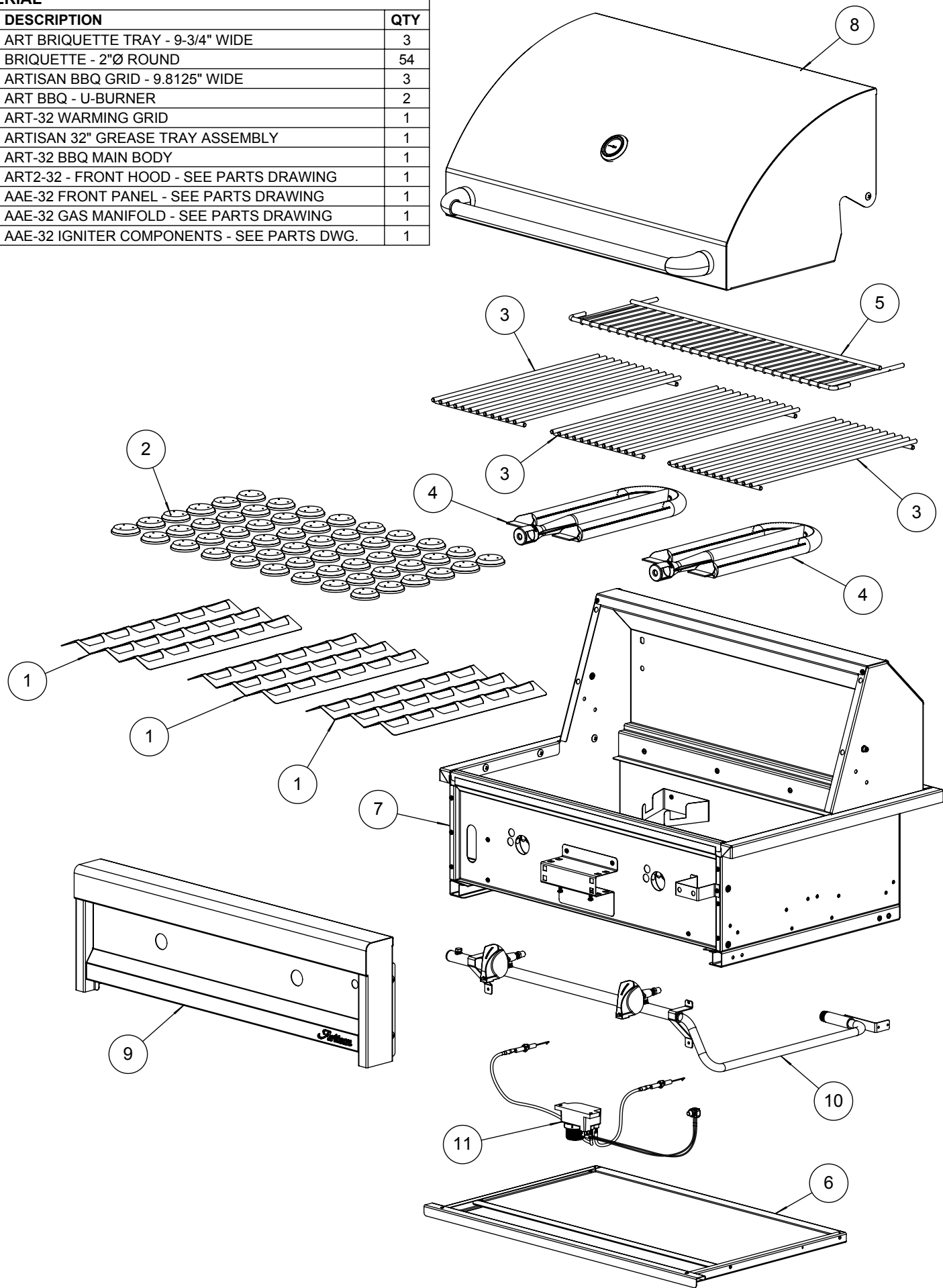


AMERICAN EAGLE: AAE-32

**BUILT-IN 32" BBQ GRILL WITH
DUAL BURNERS**

BILL OF MATERIAL

NO.	PART #	DESCRIPTION	QTY
1	100-2376	ART BRIQUETTE TRAY - 9-3/4" WIDE	3
2	265-0030	BRIQUETTE - 2"Ø ROUND	54
3	290-0323	ARTISAN BBQ GRID - 9.8125" WIDE	3
4	290-0355	ART BBQ - U-BURNER	2
5	290-0360	ART-32 WARMING GRID	1
6	510-0566	ARTISAN 32" GREASE TRAY ASSEMBLY	1
7	510-0750	ART-32 BBQ MAIN BODY	1
8	510-0756	ART2-32 - FRONT HOOD - SEE PARTS DRAWING	1
9	510-0780	AAE-32 FRONT PANEL - SEE PARTS DRAWING	1
10	510-0843	AAE-32 GAS MANIFOLD - SEE PARTS DRAWING	1
11	510-0844	AAE-32 IGNITER COMPONENTS - SEE PARTS DWG.	1



Artisan
 SUPERIOR EQUIPMENT SOLUTIONS
 7039 EAST SLAUSON AVENUE
 COMMERCE, CA. 90040

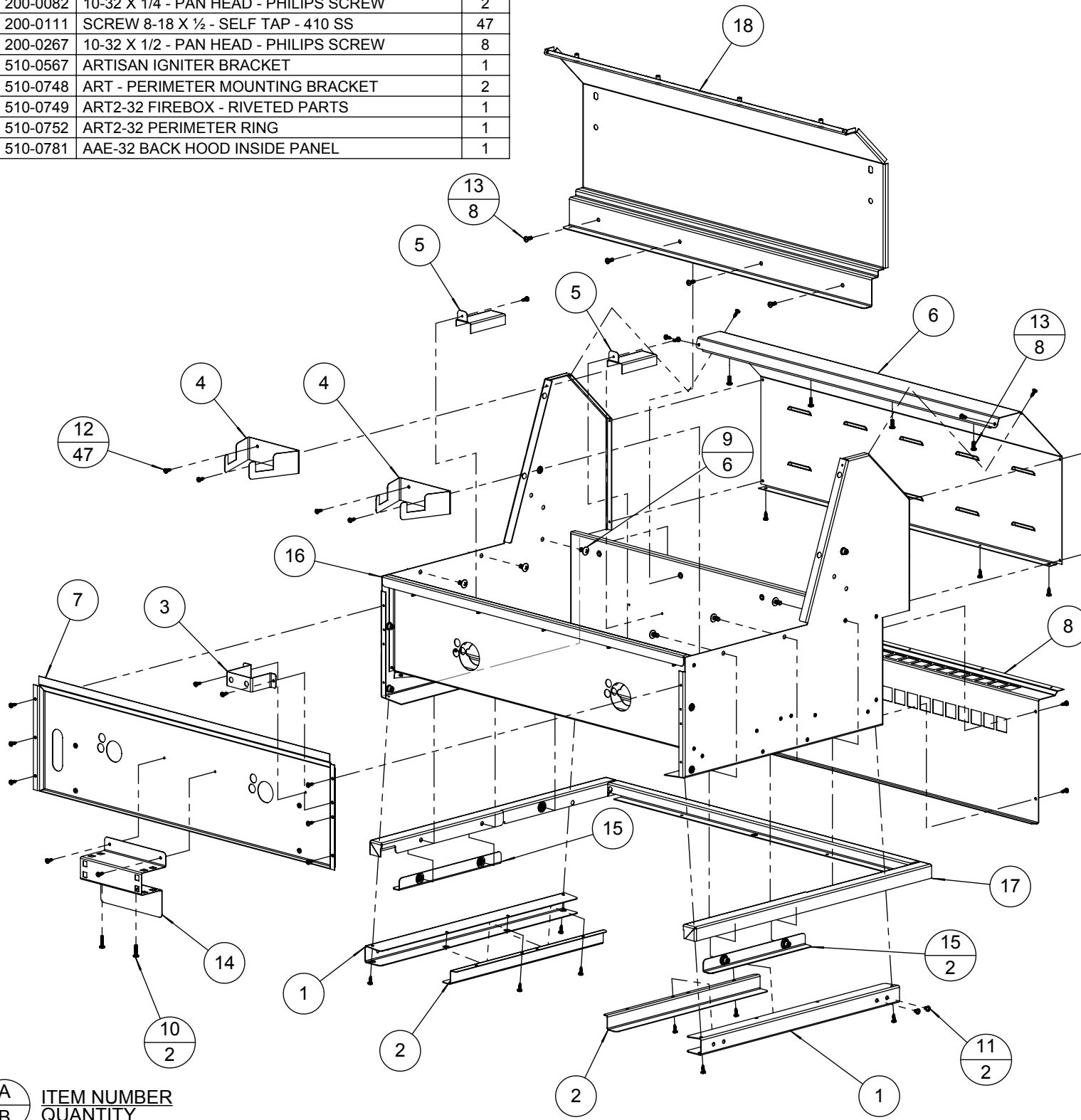
THE INFORMATION CONTAINED IN THIS DRAWING IS THE SOLE PROPERTY OF SUPERIOR EQUIPMENT SOLUTIONS INC. ANY REPRODUCTION IN PART OR AS A WHOLE WITHOUT WRITTEN PERMISSION FROM SUPERIOR EQUIPMENT SOLUTIONS, INC. IS PROHIBITED.
DRAWN BY: ADRIAN CRISCI
CREATED: 3/6/2014 5:01:29 PM

PROJECT TITLE:
AAE GRILLS
 DRAWING TITLE:
AAE-32 BBQ MAIN ASSEMBLY

DRAWING NO.:
500-013
 SHEET 1 C

BILL OF MATERIAL

NO.	PART #	DESCRIPTION	QTY
1	100-2024	FIREBOX TRAY SLIDE PART-A	2
2	100-2025	FIREBOX TRAY SLIDE PART-B	2
3	100-2038	ARTISAN IGNITER & LIGHT SWITCH BRACKET	1
4	100-2373	ART - BURNER BRACKET	2
5	100-2374	ART - IGNITER COVER - STANDARD	2
6	100-2398	ART2-32 BACK HOOD - REAR COVER	1
7	100-2401	ART2-32 FIREWALL	1
8	100-2421	AAE-32 FIREBOX REAR COVER	1
9	200-0057	SCREW 1/4-20 X 1/2 - TRUSS HEAD - PHILIPS	6
10	200-0062	10-32 X 3/4 - PAN HEAD - PHILIPS SCREW	2
11	200-0082	10-32 X 1/4 - PAN HEAD - PHILIPS SCREW	2
12	200-0111	SCREW 8-18 X 1/2 - SELF TAP - 410 SS	47
13	200-0267	10-32 X 1/2 - PAN HEAD - PHILIPS SCREW	8
14	510-0567	ARTISAN IGNITER BRACKET	1
15	510-0748	ART - PERIMETER MOUNTING BRACKET	2
16	510-0749	ART2-32 FIREBOX - RIVETED PARTS	1
17	510-0752	ART2-32 PERIMETER RING	1
18	510-0781	AAE-32 BACK HOOD INSIDE PANEL	1



A	ITEM NUMBER
B	QUANTITY

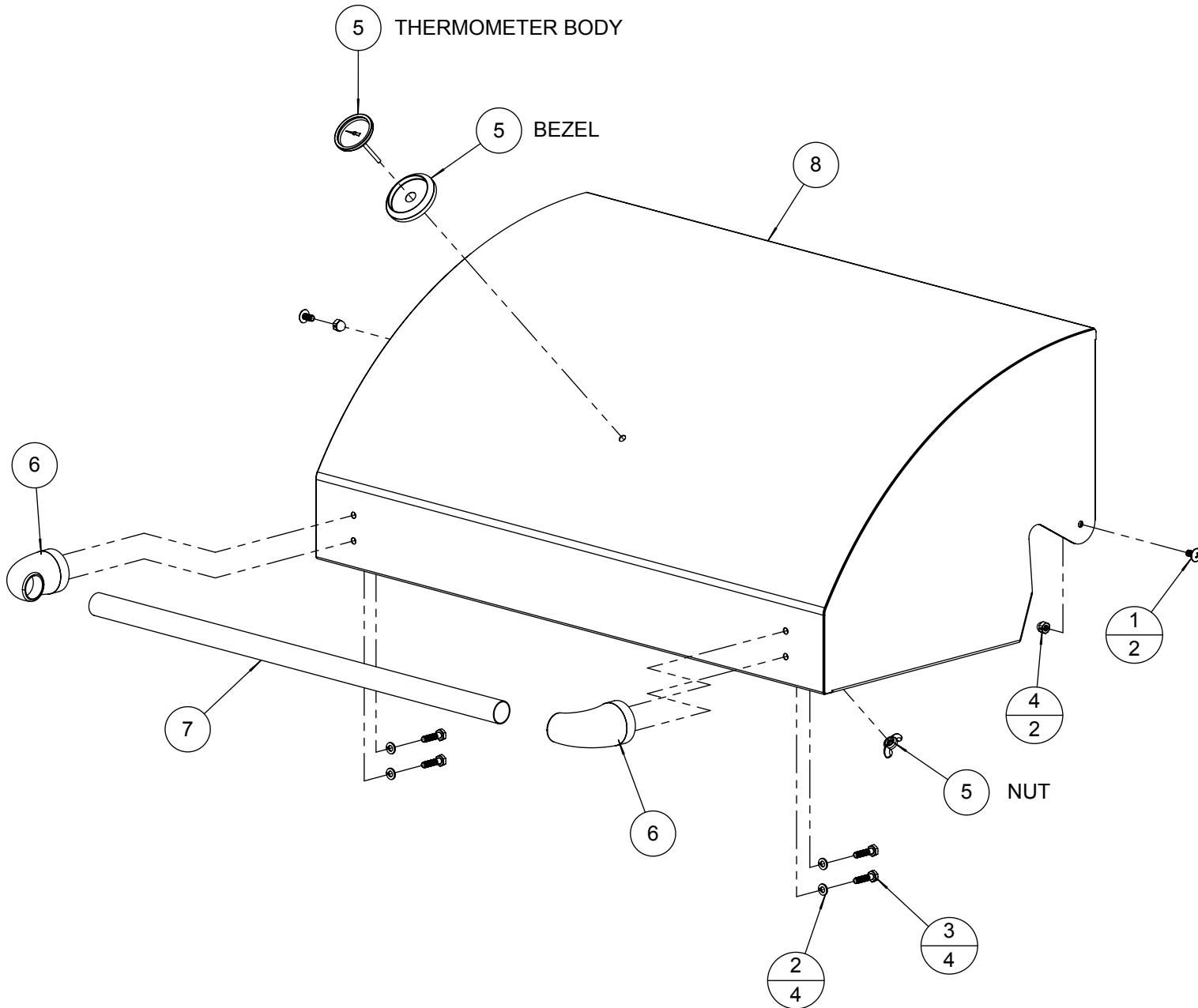
Artisan
 SUPERIOR EQUIPMENT SOLUTIONS
 7039 EAST SLAUSON AVENUE
 COMMERCE, CA. 90040

THE INFORMATION CONTAINED IN THIS DRAWING IS THE SOLE PROPERTY OF SUPERIOR EQUIPMENT SOLUTIONS INC. ANY REPRODUCTION IN PART OR AS A WHOLE WITHOUT WRITTEN PERMISSION FROM SUPERIOR EQUIPMENT SOLUTIONS, INC. IS PROHIBITED.
DRAWN BY: ADRIAN CRISCI
CREATED: 3/7/2014 1:51:45 PM

PROJECT TITLE:
AAE GRILLS
DRAWING TITLE:
ART-32 BBQ MAIN BODY

DRAWING NO.:
510-075
SHEET 1 C

BILL OF MATERIAL			
NO.	PART #	DESCRIPTION	QTY
1	200-0057	SCREW 1/4-20 X 1/2 - TRUSS HEAD - PHILPS	2
2	200-0087	WASHER - 1/4" SPRING LOCK- REGULAR - SS	4
3	200-0091	HH- HD - 1/4-20 x 1 x .75 THREAD	4
4	200-0313	NUT 1/4 x 20 - ACORN - SELF LOCKING	2
5	210-0490	ARTISAN THERMOMETER ASSEMBLY	1
6	290-0063	HANDLE - END CAP ASSEMBLY	2
7	290-0316	ARTISAN 32" BBQ - FRONT HOOD HANDLE BAR	1
8	510-0755	ART2-32 FRONT HOOD - WELDED PARTS	1



A	ITEM NUMBER
B	QUANTITY

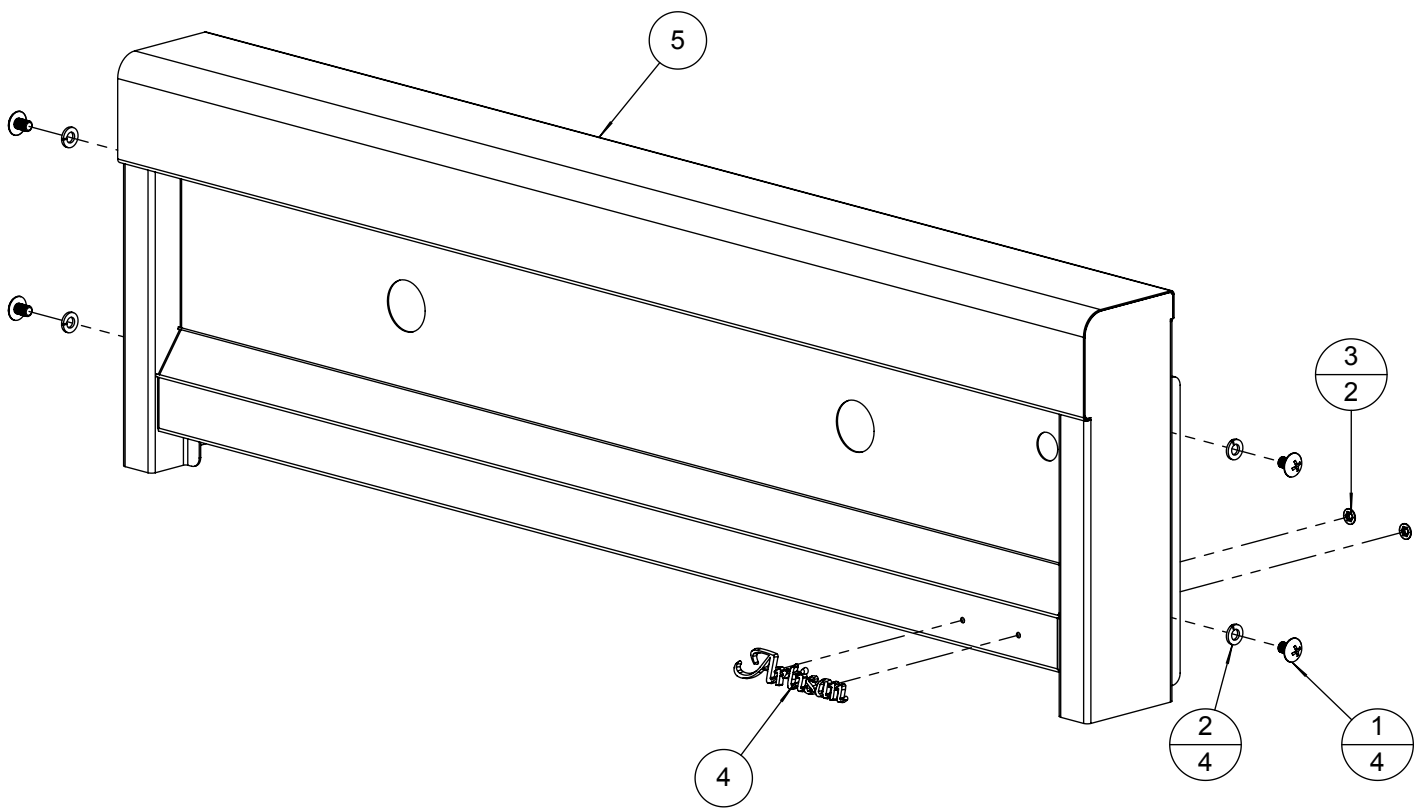
Artisan
 SUPERIOR EQUIPMENT SOLUTIONS
 7039 EAST SLAUSON AVENUE
 COMMERCE, CA. 90040

THE INFORMATION CONTAINED IN THIS DRAWING IS THE SOLE PROPERTY OF SUPERIOR EQUIPMENT SOLUTIONS INC. ANY REPRODUCTION IN PART OR AS A WHOLE WITHOUT WRITTEN PERMISSION FROM SUPERIOR EQUIPMENT SOLUTIONS, INC. IS PROHIBITED.
DRAWN BY: ADRIAN CRISCI
CREATED: 3/5/2014 5:09:16 PM

PROJECT TITLE:
AAE GRILLS
DRAWING TITLE:
ART2-32 - FRONT HOOD ASSEMBLY

DRAWING NO.:
510-075
SHEET 1 OF 1

BILL OF MATERIAL			
NO.	PART #	DESCRIPTION	QTY
1	200-0086	1/4-20 X 3/8 - TRUSS HEAD - PHILIPS SCREW	4
2	200-0087	WASHER - 1/4" SPRING LOCK- REGULAR - SS	4
3	200-0093	WASHER - PUSH LOCK 1/8" ID X 3/8" OD (LOGO)	2
4	290-0356	ARTISAN LOGO	1
5	510-0839	AAE-32 FRONT PANEL - WELDED PARTS	1



A	ITEM NUMBER
B	QUANTITY

Artisan
 SUPERIOR EQUIPMENT SOLUTIONS
 7039 EAST SLAUSON AVENUE
 COMMERCE, CA. 90040

THE INFORMATION CONTAINED IN THIS DRAWING IS THE SOLE PROPERTY OF SUPERIOR EQUIPMENT SOLUTIONS INC. ANY REPRODUCTION IN PART OR AS A WHOLE WITHOUT WRITTEN PERMISSION FROM SUPERIOR EQUIPMENT SOLUTIONS, INC. IS PROHIBITED.
DRAWN BY: ADRIAN CRISCI
CREATED: 3/5/2014 4:18:02 PM

PROJECT TITLE:
AAE GRILLS
DRAWING TITLE:
AAE-32 FRONT PANEL ASSEMBLY

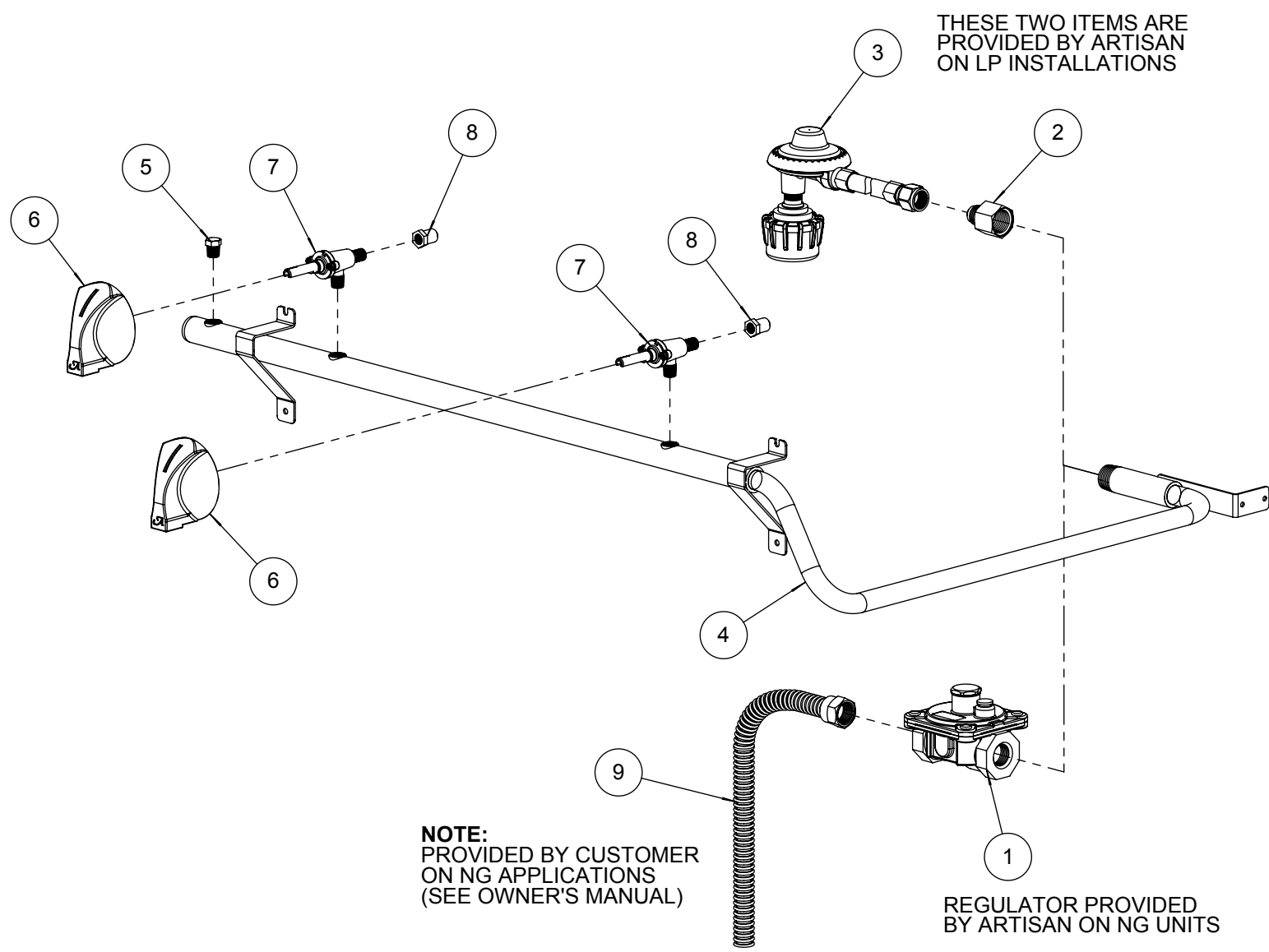
DRAWING NO.:
510-078
SHEET 1 C

BILL OF MATERIAL

NO.	PART #	DESCRIPTION	QTY
1	220-0280	REGULATOR GAS - MAXITROL RV48CL440002	1
2	220-0403	NIPPLE 3/8" OD FL x 1/2" FPT (FOR LP HOOK-UP)	1
3	220-0430	REGULATOR - LP GAS - W/ 36" Hose - 90° TYPE 1 CONN.BLACK	1
4	220-0432	GAS MANIFOLD - ART2-32 / AAE-32	1
5	220-0434	PLUG 1/8"x27 NPT - BRASS - HEX HEAD HOLLOW	1
6	290-0030	ARTISAN GAS KNOB WITH "A" LOGO	2
7	290-0320	VALVE - GAS - VARIABLE FLOW - 1/8-27 MPT X 1/8-27 NPTS	2
8	SEE NOTE	ORIFICE - MAIN BURNER - (SEE NOTE FOR SIZING)	2
9	SEE NOTE	1/2" ODF - FLEX SS GAS LINE (BY CUSTOMER)	1

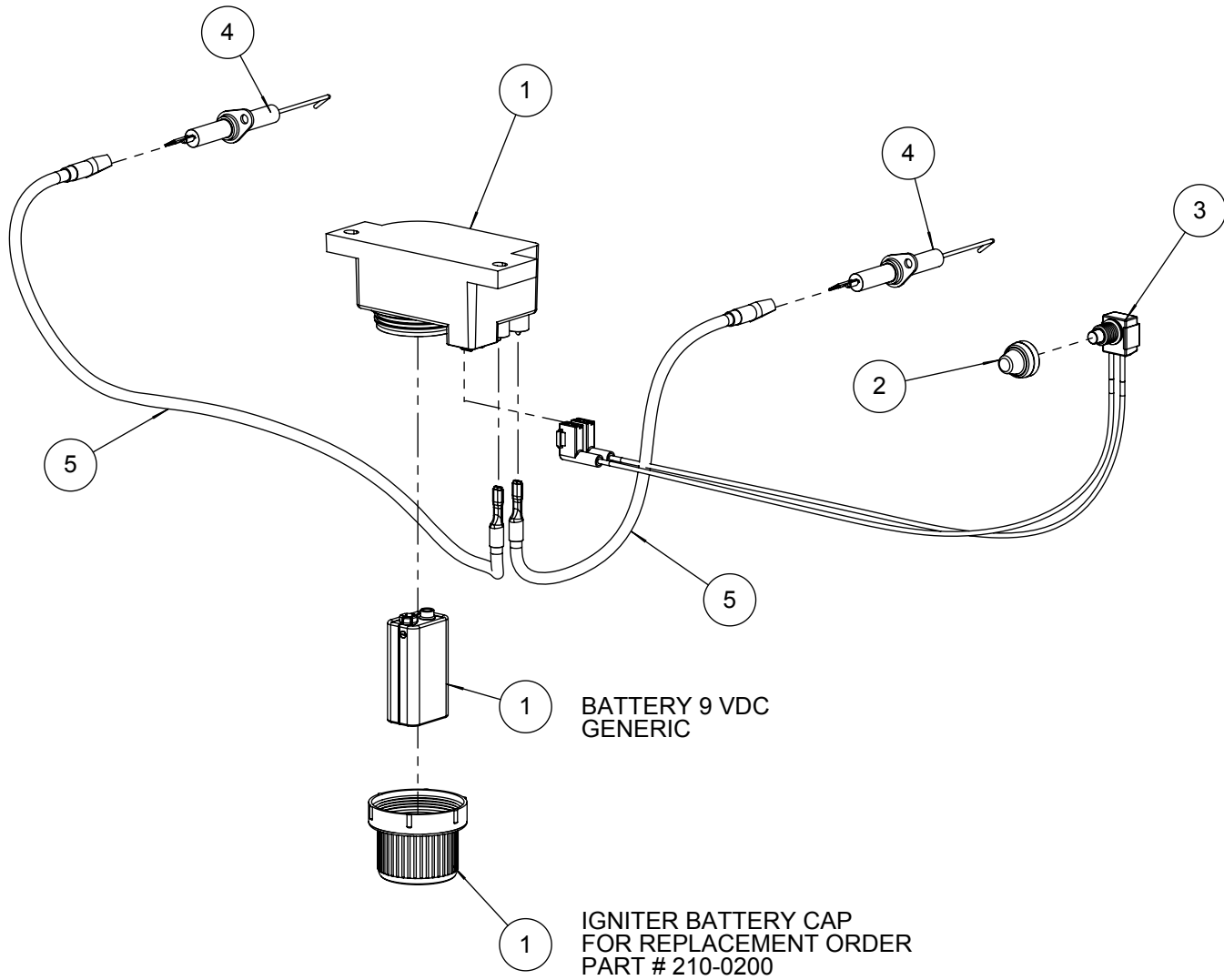
NOTE: ORIFICE OR VALVE ASSEMBLY TO CHANGE ACCORDING TO FUEL SUPPLY: NATURAL GAS OR LIQUID PROPANE

ITEM	NG GAS	LP GAS
	PART #	PART #
8	220-0436	220-0437



BILL OF MATERIAL

NO.	PART #	DESCRIPTION	QTY
1	210-0195	IGNITER MODULE - 2 POINTS (WITH CAP)	1
2	210-0198	SWITCH - WEATHER BOOT & CAP	1
3	210-0443	IGNITION POWER WIRE	1
4	210-0491	ARTISAN U-BURNER ELECTRODE TIP	2
5	210-0540	AAE-32 IGNITER WIRE KIT	1



Artisan
SUPERIOR EQUIPMENT SOLUTIONS
7039 EAST SLAUSON AVENUE
COMMERCE, CA. 90040

THE INFORMATION CONTAINED IN THIS DRAWING IS THE
SOLE PROPERTY OF SUPERIOR EQUIPMENT SOLUTIONS
INC. ANY REPRODUCTION IN PART OR AS A WHOLE
WITHOUT WRITTEN PERMISSION FROM SUPERIOR
EQUIPMENT SOLUTIONS, INC. IS PROHIBITED.

DRAWN BY: ADRIAN CRISCI
CREATED: 3/6/2014 2:47:04 PM

PROJECT TITLE:
AEE GRILLS

DRAWING TITLE:
AAE-32 IGNITER COMPONENTS

DRAWING NO.:

510-084

SHEET 1 C