

Artisan



ART-26

BUILT-IN 26" BBQ GRILL WITH DUAL BURNERS

Artisan

SUPERIOR EQUIPMENT SOLUTIONS
7039 EAST SLAUSON AVENUE
COMMERCE, CA. 90040

THE INFORMATION CONTAINED IN THIS DRAWING IS THE SOLE PROPERTY OF SUPERIOR EQUIPMENT SOLUTIONS INC. ANY REPRODUCTION IN PART OR AS A WHOLE WITHOUT WRITTEN PERMISSION FROM SUPERIOR EQUIPMENT SOLUTIONS, INC. IS PROHIBITED.

DRAWN BY: ADRIAN CRISCI
CREATED: 6/22/2011 9:43:51 AM

PROJECT TITLE:
ARTISAN GRILLS

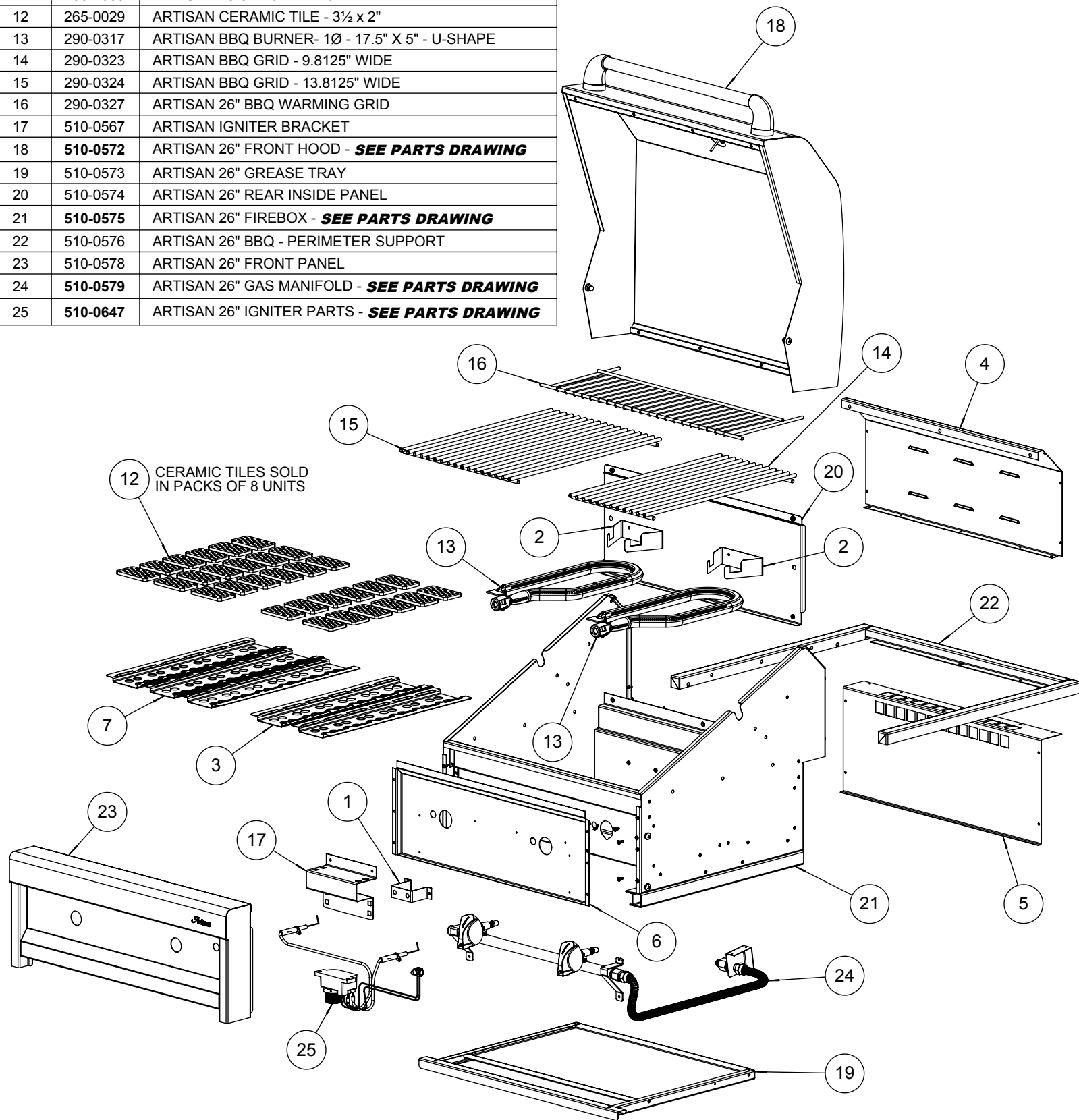
DRAWING TITLE:
PARTS AND COMPONENTS MANUAL

DRAWING NO.:
500-0093 MANUAL

SHEET 1 OF 1

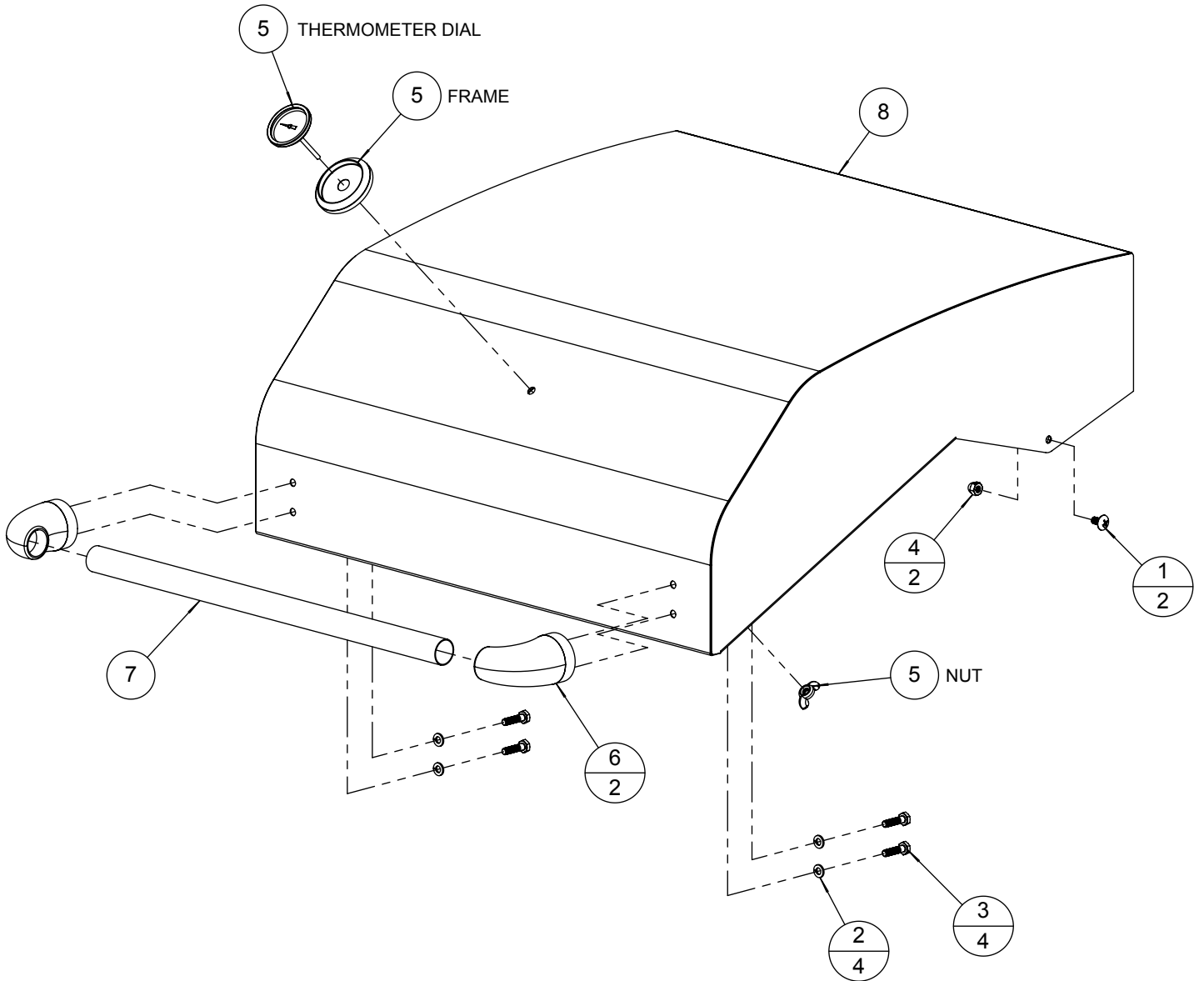
BILL OF MATERIALS

ITEM	PART N°	DESCRIPTION
1	100-2038	ARTISAN IGNITER & LIGHT SWITCH BRACKET
2	100-2048	ARTISAN BURNER BRACKET
3	100-2070	ARTISAN 9-3/4" CERAMIC TILE TRAY
4	100-2076	ARTISAN 26" REAR OUTSIDE PANEL
5	100-2079	ARTISAN 26" FIREBOX REAR COVER
6	100-2081	ARTISAN 26" FIREWALL
7	100-2089	ARTISAN 13-3/4" CERAMIC TILE TRAY
12	265-0029	ARTISAN CERAMIC TILE - 3½ x 2"
13	290-0317	ARTISAN BBQ BURNER- 1Ø - 17.5" X 5" - U-SHAPE
14	290-0323	ARTISAN BBQ GRID - 9.8125" WIDE
15	290-0324	ARTISAN BBQ GRID - 13.8125" WIDE
16	290-0327	ARTISAN 26" BBQ WARMING GRID
17	510-0567	ARTISAN IGNITER BRACKET
18	510-0572	ARTISAN 26" FRONT HOOD - SEE PARTS DRAWING
19	510-0573	ARTISAN 26" GREASE TRAY
20	510-0574	ARTISAN 26" REAR INSIDE PANEL
21	510-0575	ARTISAN 26" FIREBOX - SEE PARTS DRAWING
22	510-0576	ARTISAN 26" BBQ - PERIMETER SUPPORT
23	510-0578	ARTISAN 26" FRONT PANEL
24	510-0579	ARTISAN 26" GAS MANIFOLD - SEE PARTS DRAWING
25	510-0647	ARTISAN 26" IGNITER PARTS - SEE PARTS DRAWING



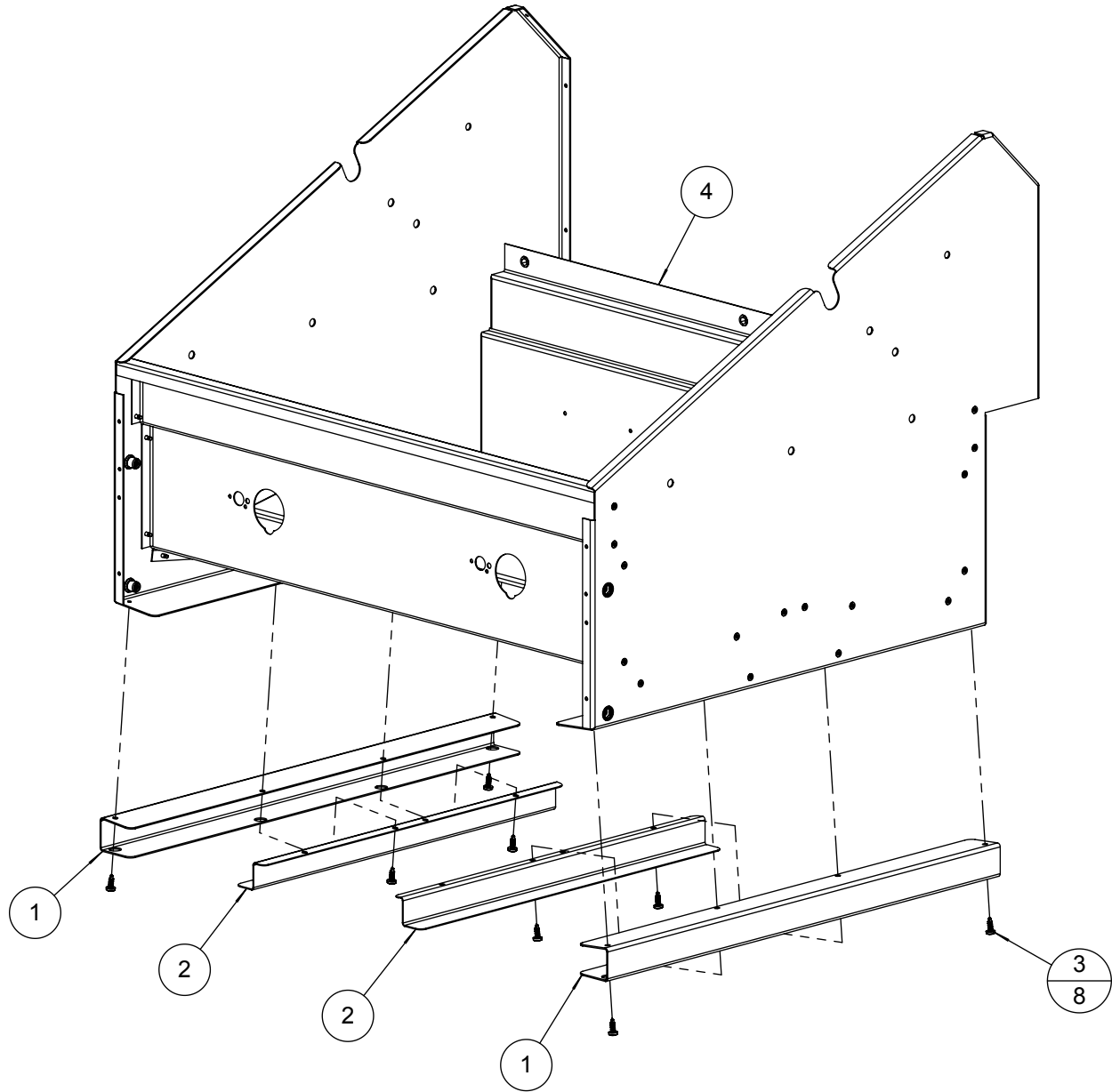
BILL OF MATERIALS

ITEM	PART N°	DESCRIPTION	QTY.
1	200-0057	SCREW 1/4-20 X 1/2 - TRUSS HEAD - PHILIPS	2
2	200-0087	WASHER - 1/4" SPRING LOCK- REGULAR - SS	4
3	200-0091	HH- HD - 1/4-20 x 1 x .75 THREAD	4
4	200-0313	NUT 1/4 x 20 - ACORN - SELF LOCKING	2
5	210-0490	ARTISAN THERMOMETER ASSEMBLY	1
6	290-0063	HANDLE - END CAP ASSEMBLY	2
7	290-0326	ARTISAN 26" BBQ - FRONT HOOD HANDLE BAR	1
8	510-0571	ARTISAN 26" BBQ - FRONT HOOD WELDED / ASSEMBLED PARTS	1



BILL OF MATERIALS

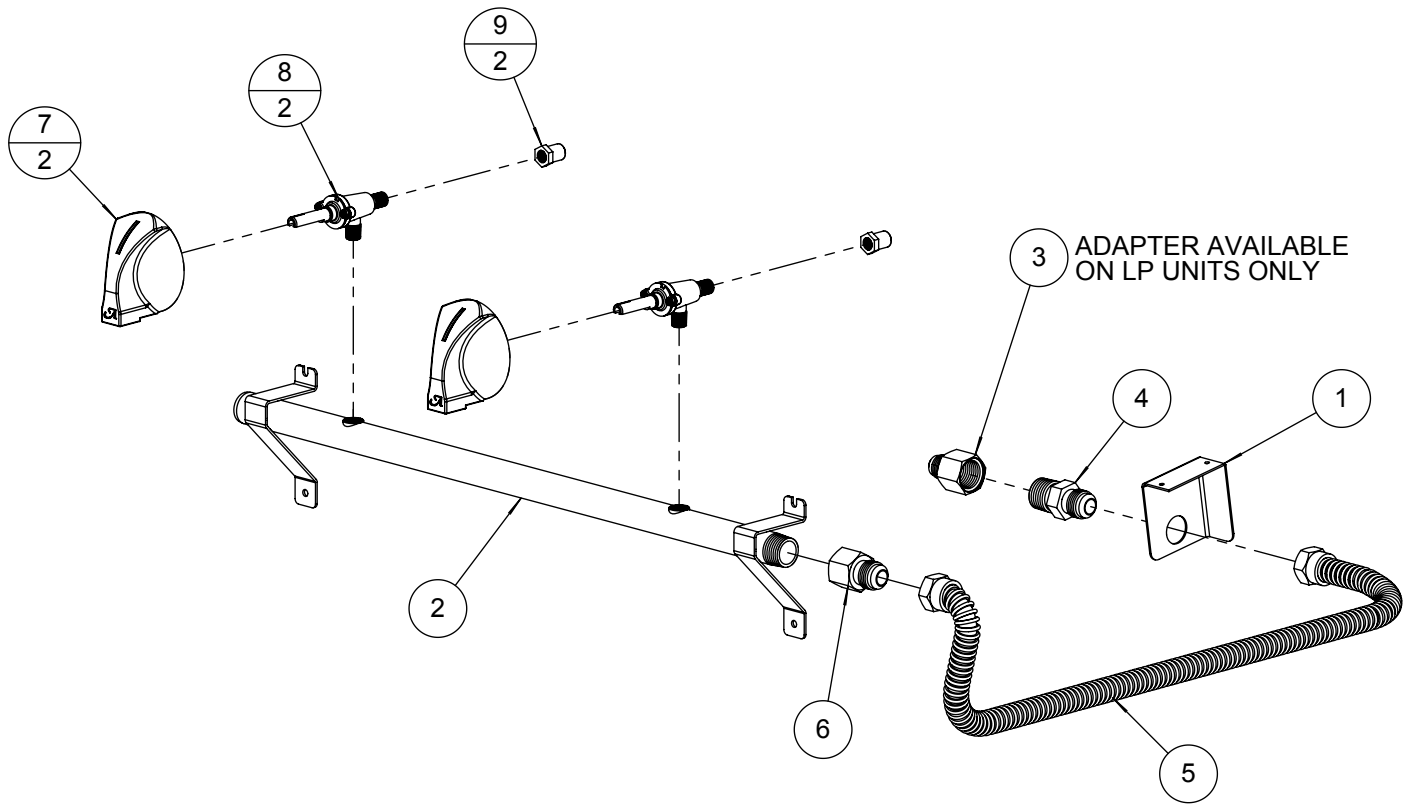
ITEM	PART N°	DESCRIPTION	QTY
1	100-2024	FIREBOX TRAY SLIDE PART-A	2
2	100-2025	FIREBOX TRAY SLIDE PART-B	2
3	200-0111	SCREW 8-18 X ½ - SELF TAP - 410 SS	8
4	510-0557	ART-26 FIREBOX - RIVETED PARTS	1



BILL OF MATERIALS

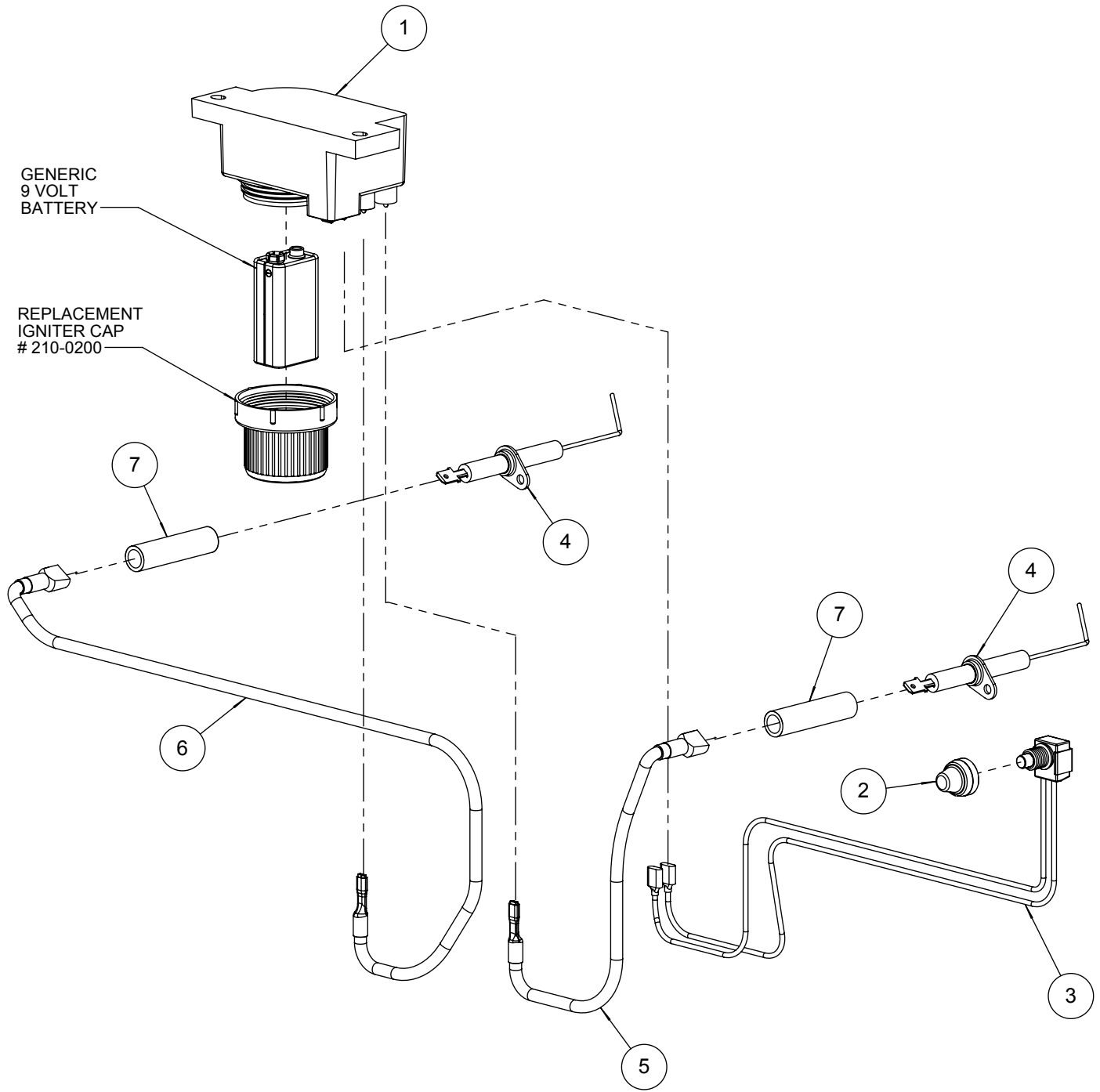
ITEM	PART N°	DESCRIPTION	QTY
1	100-2124	ARTISAN GAS PIPELINE CONNECTION BRACKET	1
2	220-0400	GAS MANIFOLD - ARTISAN 26" BBQ	1
3	220-0403	NIPPLE 3/8" OD FL x 1/2" FPT (FOR LP HOOK-UP)	1
4	220-0406	NIPPLE 1/2" OD FL x 1/2" MPT x 3/8" FPT	1
5	220-0407	ARTISAN - 1/2" ODF x 26"L- FLEX SS GAS LINE	1
6	220-0408	NIPPLE 1/2" OD FL x 1/2" FPT	1
7	290-0030	ARTISAN GAS KNOB WITH "A" LOGO	2
8	290-0320	VALVE - GAS - VARIABLE FLOW - 1/8-27 MPT X 1/8-27 NPTS	2
9	SEE NOTE	ORIFICE - MAIN BURNER - (SEE NOTE FOR SIZING)	2

ITEM 9 ORIFICE / FUEL USAGE		
FUEL	PART #	SIZE
NG	220-0397	50
LP	220-0398	57



BILL OF MATERIALS

ITEM	PART N°	DESCRIPTION	QTY.
1	210-0195	IGNITER MODULE - 2 POINTS (WITH CAP)	1
2	210-0198	SWITCH - WEATHER BOOT & CAP	1
3	210-0340	SWITCH BBQ - IGNITER - OFF/[ON] MOMENTARY - W/ 10½" LEADS 1/4"QT	1
4	210-0491	ARTISAN U-BURNER ELECTRODE TIP	2
5	SEE NOTE	ARTISAN IGNITER WIRE - 10" LONG - RIGHT BURNER	1
6	SEE NOTE	ARTISAN IGNITER WIRE - 16" LONG - LEFT BURNER	1
7	SEE NOTE	INSULATION SLEEVE - SILICONE 7/16" OD x 5/16" ID x 1-3/4" L	2



NOTE:

ITEM (5) , (6) AND (7) ARE AVAILABLE UNDER KIT #: 210-0540

ITEMS ARE NOT SOLD SEPARATELY.