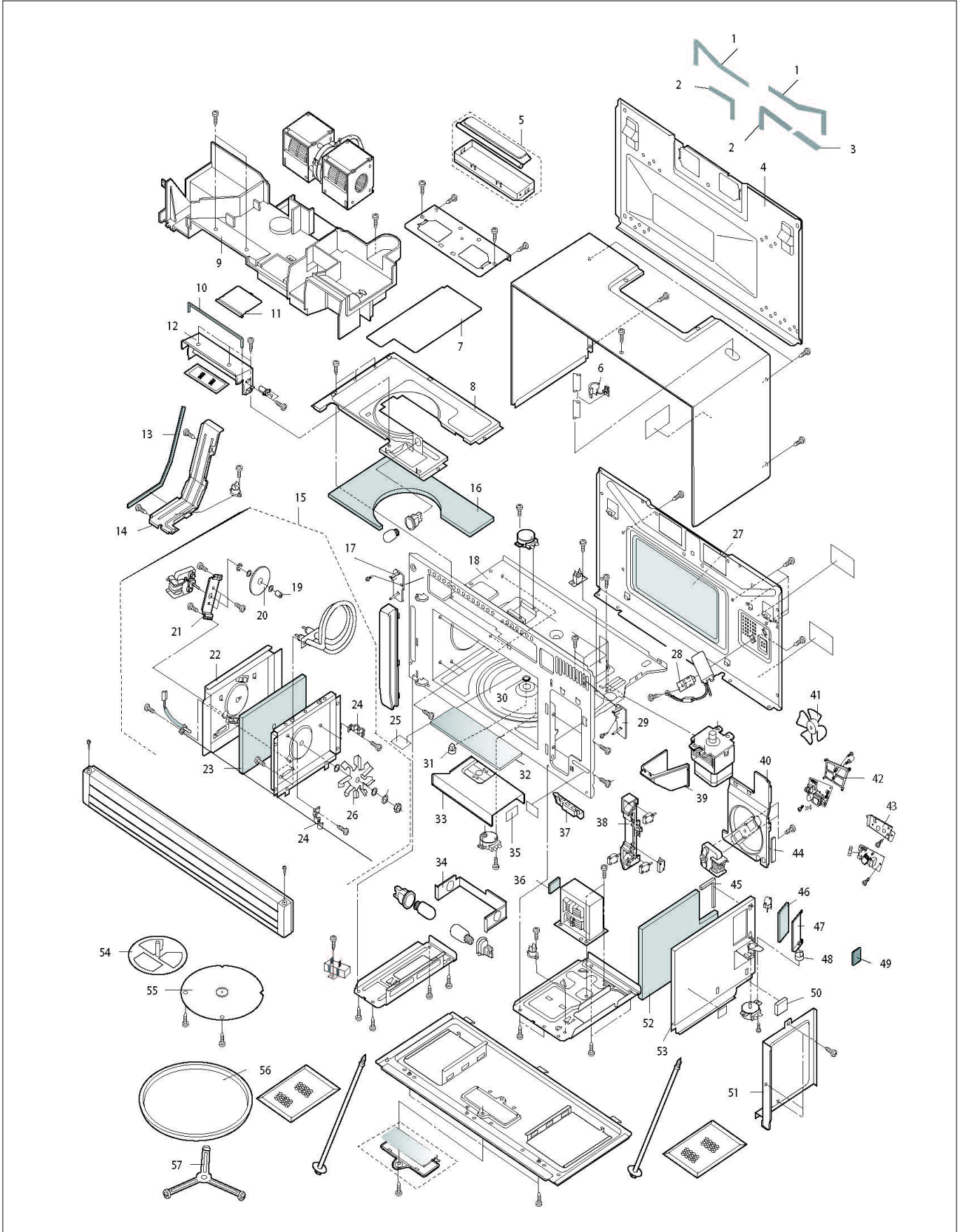


VMOR506SS

| | |
|-------------------------------|---|
| VMOR506SS Oven | 1 |
| VMOR506SS Miscellaneous | 2 |
| VMOR506SS Electrical | 3 |
| VMOR506SS Door | 4 |
| VMOR506SS Control Panel | 5 |
| VMOR506SS Cabinet Parts | 6 |
| Appendix A:Pages Index | A |
| Appendix B:Parts Index | B |

VMOR506SS Oven

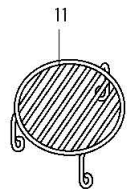
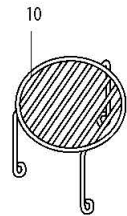
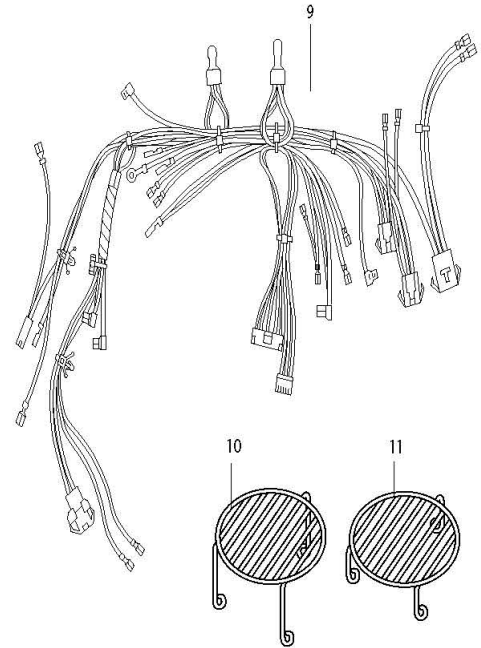
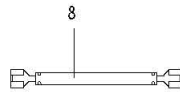
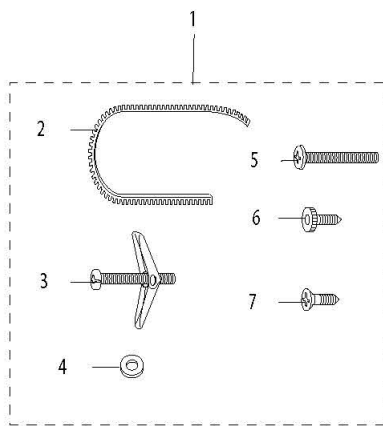




| Item | Part No. | Name | Qty | Uom | NOTES |
|------|------------|--|-----|-----|---|
| 1 | 063817-000 | CUSHION | 1 | EA | |
| 2 | 063815-000 | CUSHION | 1 | EA | |
| 3 | 063816-000 | CUSHION | 1 | EA | |
| 4 | 063788-000 | UNIT MOUNTING PLATE | 1 | EA | |
| 5 | PM120106 | Exhaust Damper Assembly (FFTA-B004MRK0) | 1 | EA | |
| 6 | 062589-000 | SIDE ANGLE R | 1 | EA | |
| 7 | 063803-000 | HEAT PROTECT TOP SHEET | 1 | EA | |
| 8 | 063806-000 | TOP DUCT | 1 | EA | |
| 9 | 070288-000 | Hood exhaust duct | 1 | EA | |
| 10 | 065014-000 | CUSHION | 1 | EA | |
| 11 | 063802-000 | OVEN LAMP COVER | 1 | EA | |
| 12 | 070287-000 | Exhaust duct | 1 | EA | |
| 13 | 063804-000 | CUSHION | 1 | EA | |
| 14 | 063789-000 | HOOD INTAKE DUCT L | 1 | EA | |
| 15 | 063787-000 | CONVECTION HEATER UNIT | 1 | EA | |
| 16 | 063809-000 | HEAT PROTECT TOP | 1 | EA | |
| 17 | 022477-000 | End cap holder L | 1 | EA | |
| 18 | N/A | Oven cavity (not replaceable) | 1 | EA | |
| 19 | PM110081 | COLLER | 1 | EA | |
| 20 | PM100093 | CONVECTION MOTOR FAN | 1 | EA | |
| 21 | PM100094 | CONVECTION MOTOR ANGLE | 1 | EA | NO LONGER AVAILABLE, Not available online / Call for pricing and availability |
| 22 | PM110082 | Heater Cover - Left | 1 | EA | |
| 23 | PM110080 | Heat Protector - Left | 1 | EA | NO LONGER AVAILABLE, Not available online / Call for pricing and availability |
| 24 | 022467-000 | HEATER MOUNTING HOLDER | 2 | EA | |
| 25 | PM110089 | Oven Light Screen | 1 | EA | |
| 26 | PM100096 | Convection Fan | 1 | EA | |
| 27 | 063819-000 | HEATER PROTECT REAR | 1 | EA | |
| 28 | 063785-000 | CAPACITOR HOLDER | 1 | EA | |

| Item | Part No. | Name | Qty | Uom | NOTES |
|------|------------|----------------------------|-----|-----|-------|
| 29 | PM110086 | End Cap Holder - Right | 1 | EA | |
| 30 | 022306-000 | SILCON PACKING | 1 | EA | |
| 31 | PM100092 | COUPLING | 1 | EA | |
| 32 | 063818-000 | HEAT PROTECT BOTTOM | 1 | EA | |
| 33 | 063801-000 | THERMAL COVER BOTTOM | 1 | EA | |
| 34 | 063821-000 | HOOD LAMP ANGLE | 1 | EA | |
| 35 | 063820-000 | CAVITY CUSHION | 2 | EA | |
| 36 | 063794-000 | CUSHION | 1 | EA | |
| 37 | PM120006 | SWITCH LEVER | 1 | EA | |
| 38 | 057735-000 | LATCH HOOK | 1 | EA | |
| 39 | 063807-000 | MAGNETRON DUCT | 1 | EA | |
| 40 | 063791-000 | FAN DUCT | 1 | EA | |
| 41 | 063790-000 | FAN BLADE | 1 | EA | |
| 42 | 063822-000 | PWB HOLDER | 1 | EA | |
| 43 | 063810-000 | NOISE FILTER ANGLE | 1 | EA | |
| 44 | 063815-000 | CUSHION | 1 | EA | |
| 45 | 063813-000 | CUSHION | 1 | EA | |
| 46 | 063796-000 | DAMPER CUSHION | 1 | EA | |
| 47 | 063798-000 | DAMPER PLATE | 1 | EA | |
| 48 | 063795-000 | DAMPER CAM | 1 | EA | |
| 49 | 063814-000 | CUSHION | 1 | EA | |
| 50 | 063812-000 | CUSHION | 1 | EA | |
| 51 | 063808-000 | HOOD INTAKE DUCT R | 1 | EA | |
| 52 | 063797-000 | HEAT PROTECT R | 1 | EA | |
| 53 | 063799-000 | THERMAL COVER R | 1 | EA | |
| 54 | PM110078 | Stirrer Fan Assembly | 1 | EA | |
| 55 | 063786-000 | STIRRER COVER ASSEMBLY | 1 | EA | |
| 56 | PM110076 | Turntable Tray | 1 | EA | |
| 57 | PM110075 | Turntable Support Assembly | 1 | EA | |

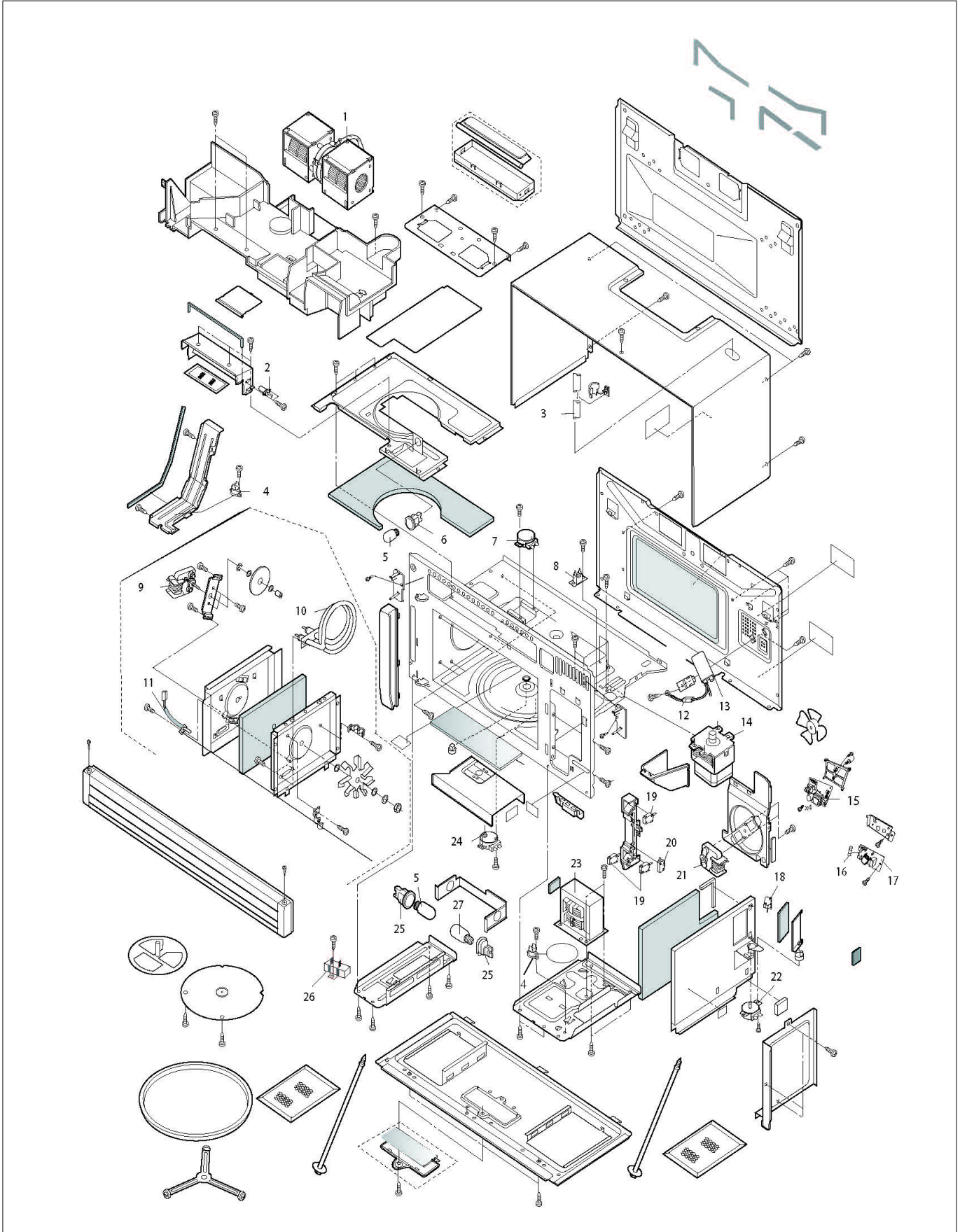
VMOR506SS Miscellaneous





| Item | Part No. | Name | Qty | Uom | NOTES |
|------|------------|--------------------------------|-----|-----|---|
| 1 | 063837-000 | INSTALLATION MATERIAL ASSEMBLY | 1 | EA | |
| 2 | PM120136 | GROMMET (LBSHC0040MRE0) | 1 | EA | |
| 3 | PM120137 | Toggle Screw (LX-BZ0195WRE0) | 4 | EA | NO LONGER AVAILABLE |
| 4 | 022277-000 | WASHER | 1 | EA | |
| 5 | PM120139 | SCREW : 4MM X 8MM | 2 | EA | |
| 6 | PM120030 | SCREW, XOTSD40P12000 | 1 | EA | |
| 7 | 022219-000 | SCREW : 5MM X 35MM | 6 | EA | |
| 8 | PM100098 | High Voltage Wire - A | 1 | EA | NO LONGER AVAILABLE, Not available online / Call for pricing and availability |
| 9 | 070294-000 | Main harness | 1 | EA | |
| 10 | PM110094 | High Rack | 1 | EA | |
| 11 | PM110095 | Low Rack | 1 | EA | |
| 12 | 050588-000 | HEAT DEFLECTOR | 1 | EA | |

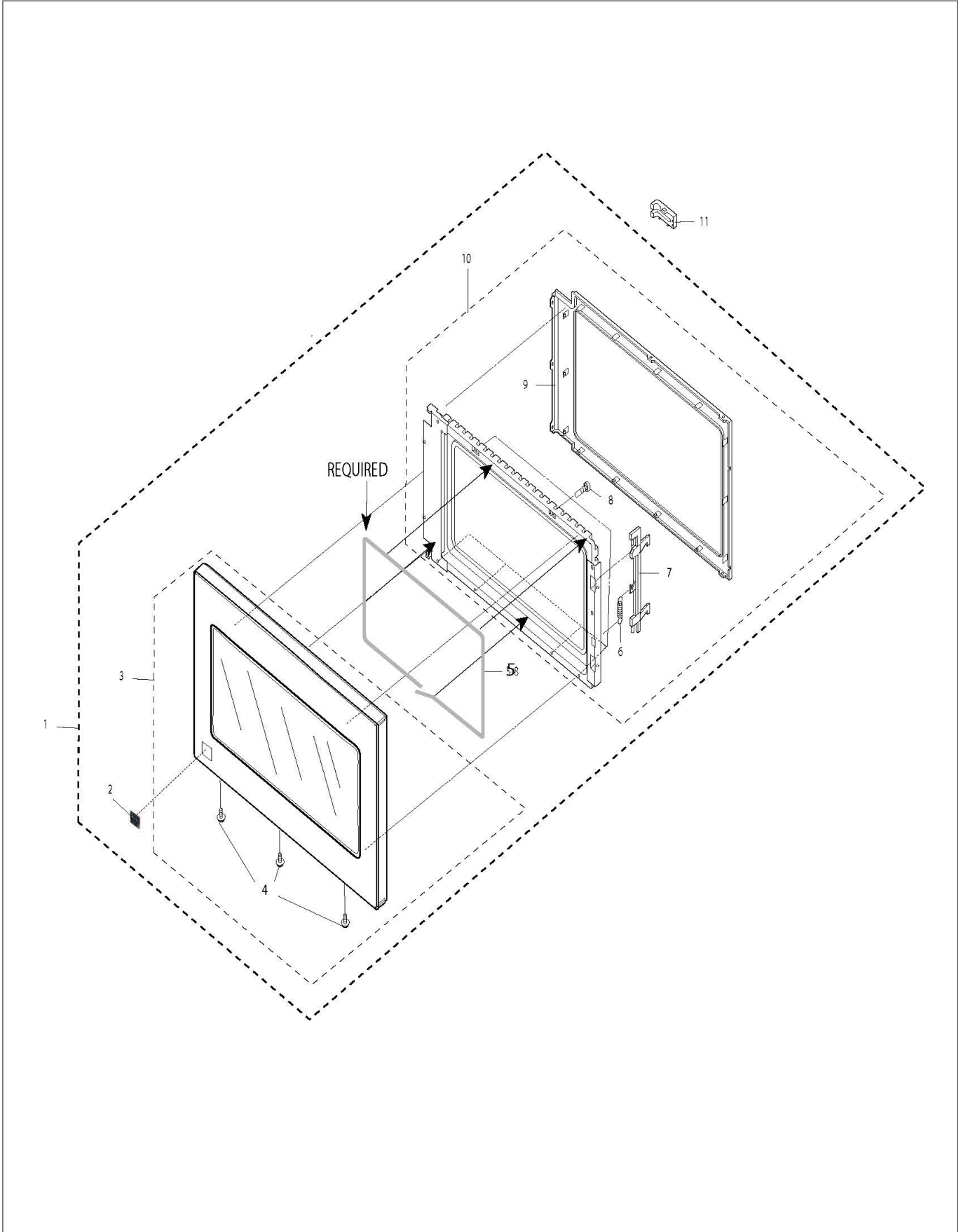
VMOR506SS Electrical





| Item | Part No. | Name | Qty | Uom | NOTES |
|------|------------|-------------------------------------|-----|-----|-------|
| 1 | 070284-000 | Hood fan motor | 1 | EA | |
| 2 | 066273-000 | AH SENSOR | 1 | EA | |
| 3 | 066272-000 | POWER SUPPLY CORD | 1 | EA | |
| 4 | PM100071 | THERMAL CUTOOUT N.O. 60o C | 2 | EA | |
| 5 | PM100081 | Hood / Oven Lamp | 2 | EA | |
| 6 | PM100039 | OVEN LAMP SOCKET | 1 | EA | |
| 7 | 022386-000 | STIRRER MOTOR | 1 | EA | |
| 8 | PM100016 | OVEN TEMP FUSE | 1 | EA | |
| 9 | PM100079 | CONVECTION MOTOR | 1 | EA | |
| 10 | 022394-000 | CONVECTION HEATER | 1 | EA | |
| 11 | PM100077 | THERMISTOR | 1 | EA | |
| 12 | PM100066 | High Voltage Rectifier Assembly | 1 | EA | |
| 13 | PM100044 | H.V. CAPACITOR (INTERCHANGEABLE) | 1 | EA | |
| 14 | 063768-000 | MAGNETRON | 1 | EA | |
| 15 | 063772-000 | SWITCHING POWER SUPPLY | 1 | EA | |
| 16 | 063769-000 | FUSE 20A | 1 | EA | |
| 17 | 063771-000 | NOISE FILTER | 1 | EA | |
| 18 | 062583-000 | SECONDARY/THIRD/STOP SWITCH | 1 | EA | |
| 19 | 062583-000 | SECONDARY/THIRD/STOP SWITCH | 3 | EA | |
| 20 | 063005-000 | SWITCH | 1 | EA | |
| 21 | PM100080 | Fan Motor | 1 | EA | |
| 22 | 022389-000 | DAMPER MOTOR | 1 | EA | |
| 23 | 049248-000 | HV TRANSFORMER REPLACEMENT KIT | 1 | EA | |
| 24 | PM100069 | TURNTABLE MOTOR | 1 | EA | |
| 25 | 063234-000 | HOOD LAMP SOCKET | 2 | EA | |
| 26 | PM100084 | Noise Resistor | 1 | EA | |
| 27 | PM100086 | Hood Lamp | 1 | EA | |

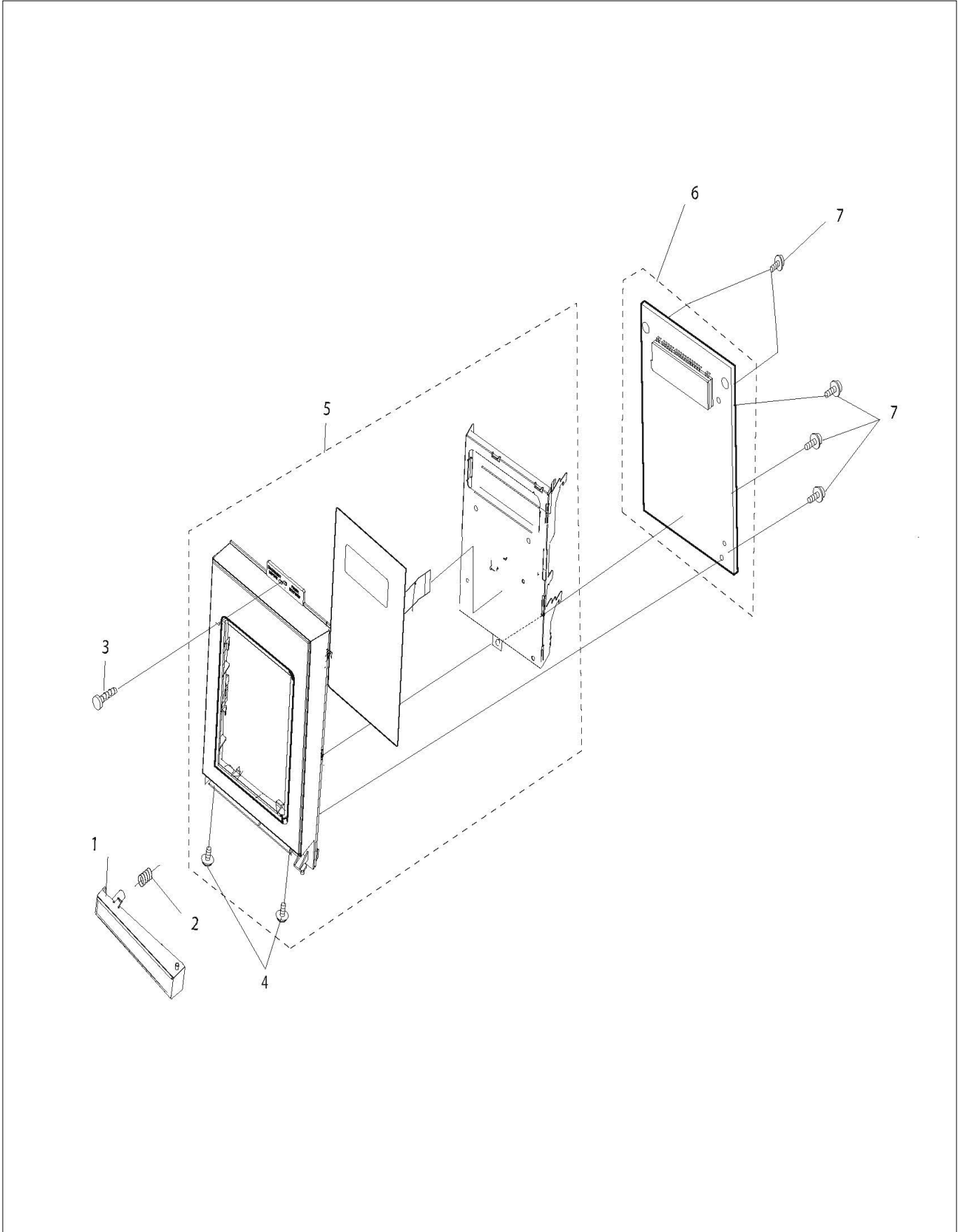
VMOR506SS Door





| Item | Part No. | Name | Qty | Uom | NOTES |
|------|------------|---------------------------------|-----|-----|---|
| 1 | 070290-000 | Door assembly | 1 | EA | |
| 2 | 070291-000 | Viking prof. badge | 1 | EA | |
| 3 | 070289-000 | Door frame | 1 | EA | |
| 4 | PM120033 | SCREW ; CONTROL PANEL MTG. | 3 | EA | |
| 5 | PM120134 | Door Cushion (PCUSUB073MRP0) | 1 | EA | |
| 6 | PM120007 | LATCH SPRING | 1 | EA | |
| 7 | PM120133 | Latch Head (LSTPPB025MRF0) | 1 | EA | |
| 8 | 028823-000 | SCREW; 4MM X 8MM | 6 | EA | Not available online / Call for pricing and availability |
| 9 | PM110093 | Choke Cover | 1 | EA | |
| 10 | PM110090 | Door Panel Assembly | 1 | EA | |
| 11 | PM120116 | Door Stopper (LSTPPB024MRF0) | 1 | EA | |

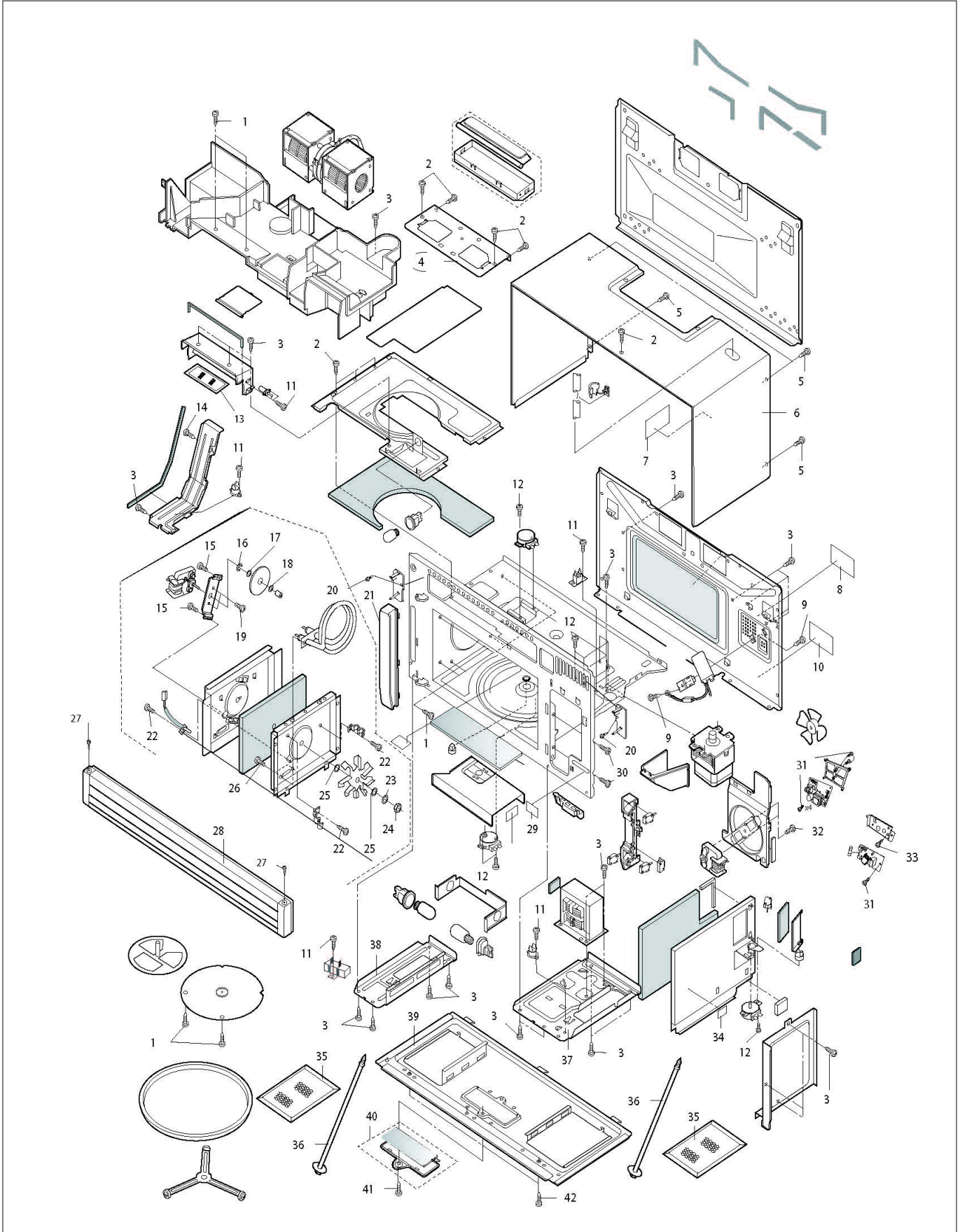
VMOR506SS Control Panel





| Item | Part No. | Name | Qty | Uom | NOTES |
|------|------------|-------------------------------|-----|-----|-------|
| 1 | 063783-000 | OPEN BUTTON ASSEMBLY | 1 | EA | |
| 2 | PM120044 | OPEN BUTTON SPRING | 1 | EA | |
| 3 | PM120030 | SCREW, XOTSD40P12000 | 1 | EA | |
| 4 | PM120033 | SCREW ; CONTROL PANEL MTG. | 2 | EA | |
| 5 | 070285-000 | Control panel sub. assembly | 1 | EA | |
| 6 | 066274-000 | CONTROL UNIT | 1 | EA | |
| 7 | 022383-000 | SCREW | 3 | EA | |

VMOR506SS Cabinet Parts





| Item | Part No. | Name | Qty | Uom | NOTES |
|------|------------|----------------------------|-----|-----|---|
| 1 | PM120076 | SCREW; 4MM X 10MM | 10 | EA | NO LONGER AVAILABLE |
| 2 | PM120159 | SCREW | 9 | EA | |
| 3 | PM120030 | SCREW, XOTSD40P12000 | 32 | EA | |
| 4 | 063780-000 | REAR STAY | 1 | EA | |
| 5 | PM120030 | SCREW, XOTSD40P12000 | 4 | EA | |
| 6 | 063776-000 | OUTER CASE CABINET | 1 | EA | |
| 7 | 063777-000 | SCHEMATIC DIAGRAM | 1 | EA | |
| 8 | 022237-000 | NHW CAUTION LABEL | 1 | EA | Not available online / Call for pricing and availability |
| 9 | 022271-000 | SCREW : 4MM X 8MM | 1 | EA | |
| 10 | 063828-000 | DHHS SERVICE CAUTION LABEL | 1 | EA | |
| 11 | PM120143 | Screw, 3mm X 8mm | 4 | EA | NO LONGER AVAILABLE, Not available online / Call for pricing and availability |
| 12 | PM120002 | SPECIAL SCREW | 9 | EA | |
| 13 | 022440-000 | CHARCOAL FILTER | 1 | EA | |
| 14 | 022451-000 | SCREW : 4MM X 8MM | 1 | EA | |
| 15 | 022456-000 | SCREW : 4MM X 8MM | 2 | EA | |
| 16 | PM120152 | E-Ring | 1 | EA | NO LONGER AVAILABLE, Not available online / Call for pricing and availability |
| 17 | 063833-000 | WASHER | 1 | EA | |
| 18 | PM120158 | Washer, 5mm X 0.8mm | 1 | EA | NO LONGER AVAILABLE, Not available online / Call for pricing and availability |
| 19 | PM120144 | Screw, 3mm X 6mm | 2 | EA | NO LONGER AVAILABLE |
| 20 | PM120147 | SCREW (LX-CZB020MRE0) | 2 | EA | |
| 21 | 063779-000 | Left Sash assy | 1 | EA | |
| 22 | PM120092 | SCREW: 3MM X 6MM | 5 | EA | |



| Item | Part No. | Name | Qty | Uom | NOTES |
|------|------------|---------------------------------|-----|-----|---|
| 23 | PM120157 | Washer, 4mm X 0.8mm | 1 | EA | NO LONGER AVAILABLE, Not available online / Call for pricing and availability |
| 24 | PM120154 | Nut, 4mm X 3.2mm | 1 | EA | NO LONGER AVAILABLE |
| 25 | PM120156 | Washer, 5mm X 2mm | 2 | EA | NO LONGER AVAILABLE, Not available online / Call for pricing and availability |
| 26 | 022474-000 | SCREW : 4MM X 6MM | 2 | EA | |
| 27 | PM120033 | SCREW ; CONTROL PANEL MTG. | 2 | EA | |
| 28 | PM110065 | Hood Exhaust Louver (VMOR205SS) | 1 | EA | |
| 29 | 005196-000 | GND CAUTION LABEL | 1 | EA | NO LONGER AVAILABLE, Not available online / Call for pricing and availability |
| 30 | PM120003 | SCREW | 2 | EA | NO LONGER AVAILABLE |
| 31 | 022262-000 | SCREW; 3MM X 10MM | | EA | |
| 32 | PM120148 | SCREW : 3MM X 14MM | 2 | EA | NO LONGER AVAILABLE, Not available online / Call for pricing and availability |
| 33 | 028721-000 | SCREW | 1 | EA | |
| 34 | 063829-000 | MONITOR CAUTION LABEL | 1 | EA | |
| 35 | PM110064 | Grease Filter | 2 | EA | |
| 36 | PM120149 | Unit Mounting Screw | 2 | EA | |
| 37 | 063774-000 | BASE PLATE RIGHT | 1 | EA | |
| 38 | 063775-000 | BASE PLATE LEFT | 1 | EA | |
| 39 | 063778-000 | BASE COVER | 1 | EA | |
| 40 | PM110070 | Hood Lamp Glass Assembly | 1 | EA | |
| 41 | PM120159 | SCREW | 1 | EA | |
| 42 | PM120153 | Screw, 4mm X 12mm | 3 | EA | |



Appendix A:Pages Index

VMOR506SS Cabinet Parts 6
VMOR506SS Control Panel 5
VMOR506SS Door 4
VMOR506SS Electrical 3
VMOR506SS Miscellaneous 2
VMOR506SS Oven 1



Appendix B:Parts Index

| | | | |
|------------|------|------------|------|
| 005196-000 | 6 | 063787-000 | 1 |
| 022219-000 | 2 | 063788-000 | 1 |
| 022237-000 | 6 | 063789-000 | 1 |
| 022262-000 | 6 | 063790-000 | 1 |
| 022271-000 | 6 | 063791-000 | 1 |
| 022277-000 | 2 | 063794-000 | 1 |
| 022306-000 | 1 | 063795-000 | 1 |
| 022383-000 | 5 | 063796-000 | 1 |
| 022386-000 | 3 | 063797-000 | 1 |
| 022389-000 | 3 | 063798-000 | 1 |
| 022394-000 | 3 | 063799-000 | 1 |
| 022440-000 | 6 | 063801-000 | 1 |
| 022451-000 | 6 | 063802-000 | 1 |
| 022456-000 | 6 | 063803-000 | 1 |
| 022467-000 | 1 | 063804-000 | 1 |
| 022474-000 | 6 | 063806-000 | 1 |
| 022477-000 | 1 | 063807-000 | 1 |
| 028721-000 | 6 | 063808-000 | 1 |
| 028823-000 | 4 | 063809-000 | 1 |
| 049248-000 | 3 | 063810-000 | 1 |
| 050588-000 | 2 | 063812-000 | 1 |
| 057735-000 | 1 | 063813-000 | 1 |
| 062583-000 | 3, 3 | 063814-000 | 1 |
| 062589-000 | 1 | 063815-000 | 1, 1 |
| 063005-000 | 3 | 063816-000 | 1 |
| 063234-000 | 3 | 063817-000 | 1 |
| 063768-000 | 3 | 063818-000 | 1 |
| 063769-000 | 3 | 063819-000 | 1 |
| 063771-000 | 3 | 063820-000 | 1 |
| 063772-000 | 3 | 063821-000 | 1 |
| 063774-000 | 6 | 063822-000 | 1 |
| 063775-000 | 6 | 063828-000 | 6 |
| 063776-000 | 6 | 063829-000 | 6 |
| 063777-000 | 6 | 063833-000 | 6 |
| 063778-000 | 6 | 063837-000 | 2 |
| 063779-000 | 6 | 065014-000 | 1 |
| 063780-000 | 6 | 066272-000 | 3 |
| 063783-000 | 5 | 066273-000 | 3 |
| 063785-000 | 1 | 066274-000 | 5 |
| 063786-000 | 1 | 070284-000 | 3 |
| | | 070285-000 | 5 |



| | | | |
|------------|---|----------|------------|
| 070287-000 | 1 | PM120007 | 4 |
| 070288-000 | 1 | PM120030 | 2, 5, 6, 6 |
| 070289-000 | 4 | PM120033 | 4, 5, 6 |
| 070290-000 | 4 | PM120044 | 5 |
| 070291-000 | 4 | PM120076 | 6 |
| 070294-000 | 2 | PM120092 | 6 |
| PM100016 | 3 | PM120106 | 1 |
| PM100039 | 3 | PM120116 | 4 |
| PM100044 | 3 | PM120133 | 4 |
| PM100066 | 3 | PM120134 | 4 |
| PM100069 | 3 | PM120136 | 2 |
| PM100071 | 3 | PM120137 | 2 |
| PM100077 | 3 | PM120139 | 2 |
| PM100079 | 3 | PM120143 | 6 |
| PM100080 | 3 | PM120144 | 6 |
| PM100081 | 3 | PM120147 | 6 |
| PM100084 | 3 | PM120148 | 6 |
| PM100086 | 3 | PM120149 | 6 |
| PM100092 | 1 | PM120152 | 6 |
| PM100093 | 1 | PM120153 | 6 |
| PM100094 | 1 | PM120154 | 6 |
| PM100096 | 1 | PM120156 | 6 |
| PM100098 | 2 | PM120157 | 6 |
| PM110064 | 6 | PM120158 | 6 |
| PM110065 | 6 | PM120159 | 6, 6 |
| PM110070 | 6 | | |
| PM110075 | 1 | | |
| PM110076 | 1 | | |
| PM110078 | 1 | | |
| PM110080 | 1 | | |
| PM110081 | 1 | | |
| PM110082 | 1 | | |
| PM110086 | 1 | | |
| PM110089 | 1 | | |
| PM110090 | 4 | | |
| PM110093 | 4 | | |
| PM110094 | 2 | | |
| PM110095 | 2 | | |
| PM120002 | 6 | | |
| PM120003 | 6 | | |
| PM120006 | 1 | | |