

This Owner's Manual is provided and hosted by [Appliance Factory Parts](#).



Alfresco ART2-32 Owner's Manual

[Shop genuine replacement parts for Alfresco ART2-32](#)



[Find Your Alfresco Grill Parts - Select From 126 Models](#)

----- Manual continues below -----

Artisan

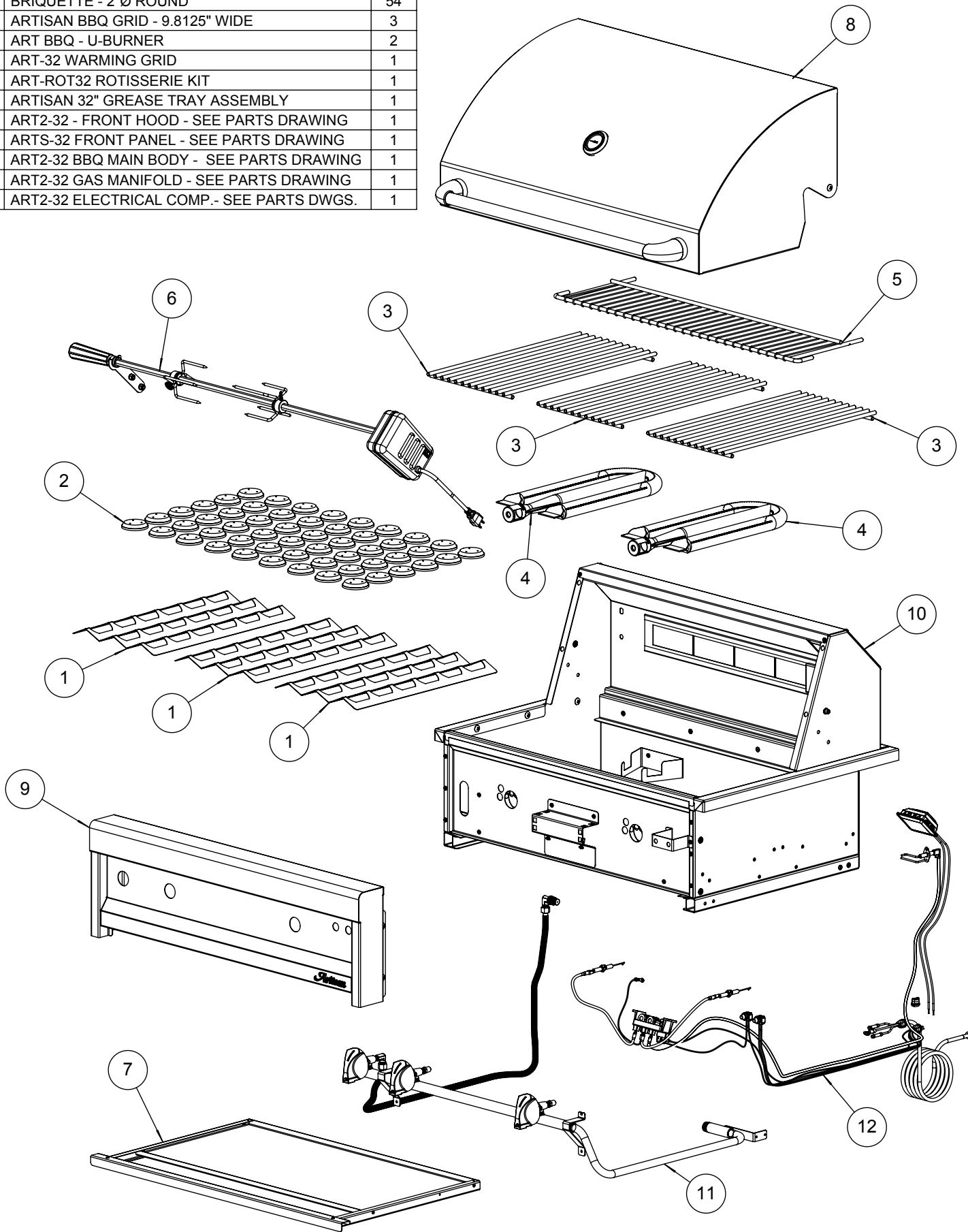


ARTISAN MODEL: ART2-32

**BUILT-IN 32" BBQ GRILL WITH
DUAL BURNERS & ROTISSERIE**

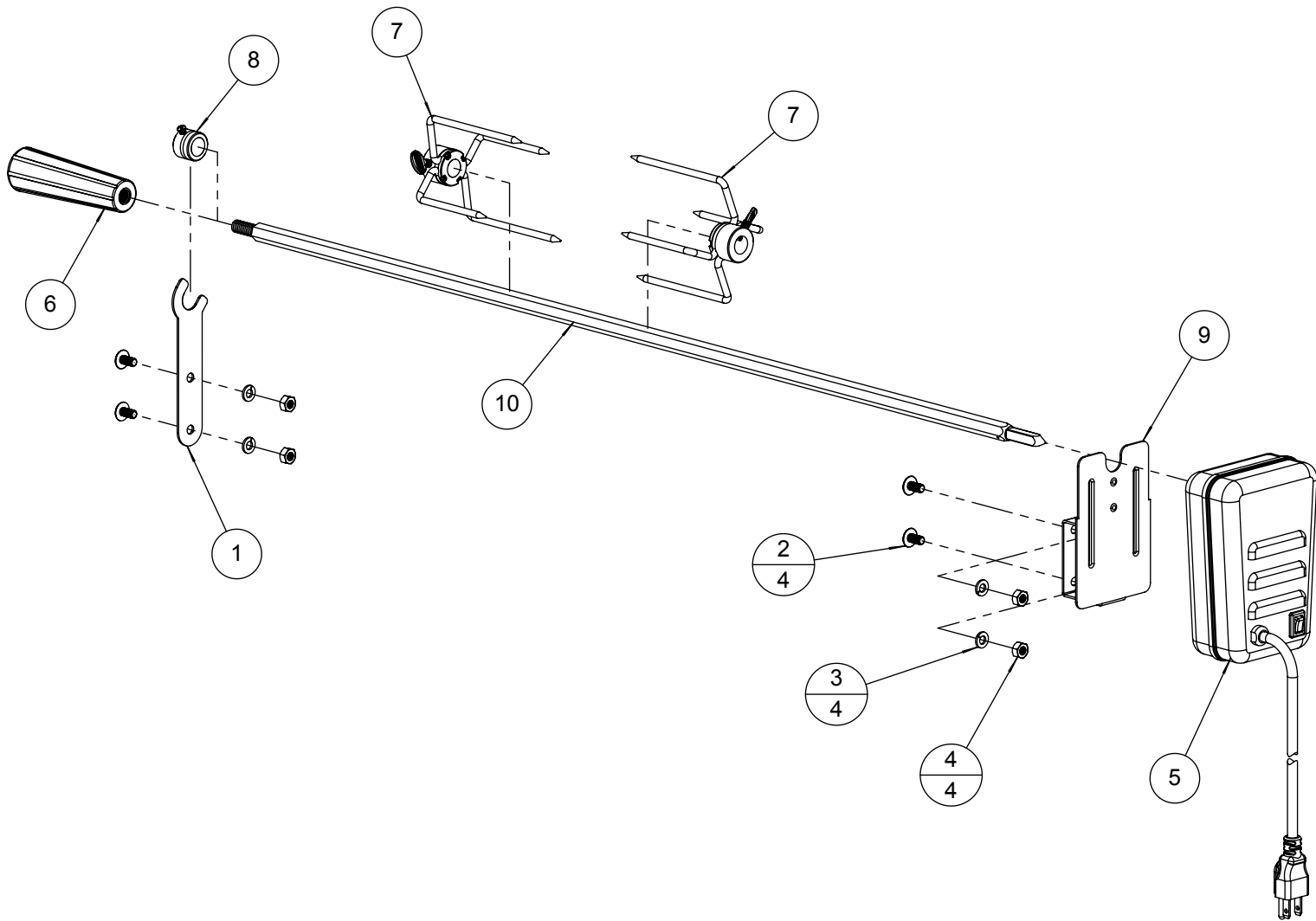
BILL OF MATERIAL

NO.	PART #	DESCRIPTION	QTY
1	100-2376	ART BRIQUETTE TRAY - 9-3/4" WIDE	3
2	265-0030	BRIQUETTE - 2"Ø ROUND	54
3	290-0323	ARTISAN BBQ GRID - 9.8125" WIDE	3
4	290-0355	ART BBQ - U-BURNER	2
5	290-0360	ART-32 WARMING GRID	1
6	510-0551	ART-ROT32 ROTISSERIE KIT	1
7	510-0566	ARTISAN 32" GREASE TRAY ASSEMBLY	1
8	510-0756	ART2-32 - FRONT HOOD - SEE PARTS DRAWING	1
9	510-0831	ARTS-32 FRONT PANEL - SEE PARTS DRAWING	1
10	510-0832	ART2-32 BBQ MAIN BODY - SEE PARTS DRAWING	1
11	510-0840	ART2-32 GAS MANIFOLD - SEE PARTS DRAWING	1
12	510-0841	ART2-32 ELECTRICAL COMP.- SEE PARTS DWGS.	1



BILL OF MATERIAL

NO.	PART #	DESCRIPTION	QTY
1	100-2366	ART ROTISSERIE HOLDER BRACKET	1
2	200-0057	SCREW 1/4-20 X 1/2 - TRUSS HEAD - PHILPS	4
3	200-0087	WASHER - 1/4" SPRING LOCK- REGULAR - SS	4
4	200-0090	1/4-20 - DOUBLE CHAMFER - HEX NUT	4
5	210-0493	ARTISAN ROTISSERIE MOTOR	1
6	290-0330	HANDLE - ROTISSERIE SPEAR - ARTISAN	1
7	290-0331	FORK - ARTISAN ROTISSERIE ASSEMBLY (FORK + THUMB SCREW)	2
8	290-0332	BUSHING- ARTISAN ROTISSERIE BUSHING ASSEMBLY	1
9	290-0333	BRACKET - ARTISAN ROTISSERIE MOTOR MOUNT	1
10	290-0335	SPEAR ROTISSERIE - ARTISAN 32" BBQ	1



A	ITEM NUMBER
B	QUANTITY

Artisan
 SUPERIOR EQUIPMENT SOLUTIONS
 7039 EAST SLAUSON AVENUE
 COMMERCE, CA. 90040

THE INFORMATION CONTAINED IN THIS DRAWING IS THE
 SOLE PROPERTY OF SUPERIOR EQUIPMENT SOLUTIONS
 INC. ANY REPRODUCTION IN PART OR AS A WHOLE
 WITHOUT WRITTEN PERMISSION FROM SUPERIOR
 EQUIPMENT SOLUTIONS, INC. IS PROHIBITED.

DRAWN BY: ADRIAN CRISCI
CREATED: 6/30/2011 10:54:15 AM

PROJECT TITLE:
ART2 GRILLS

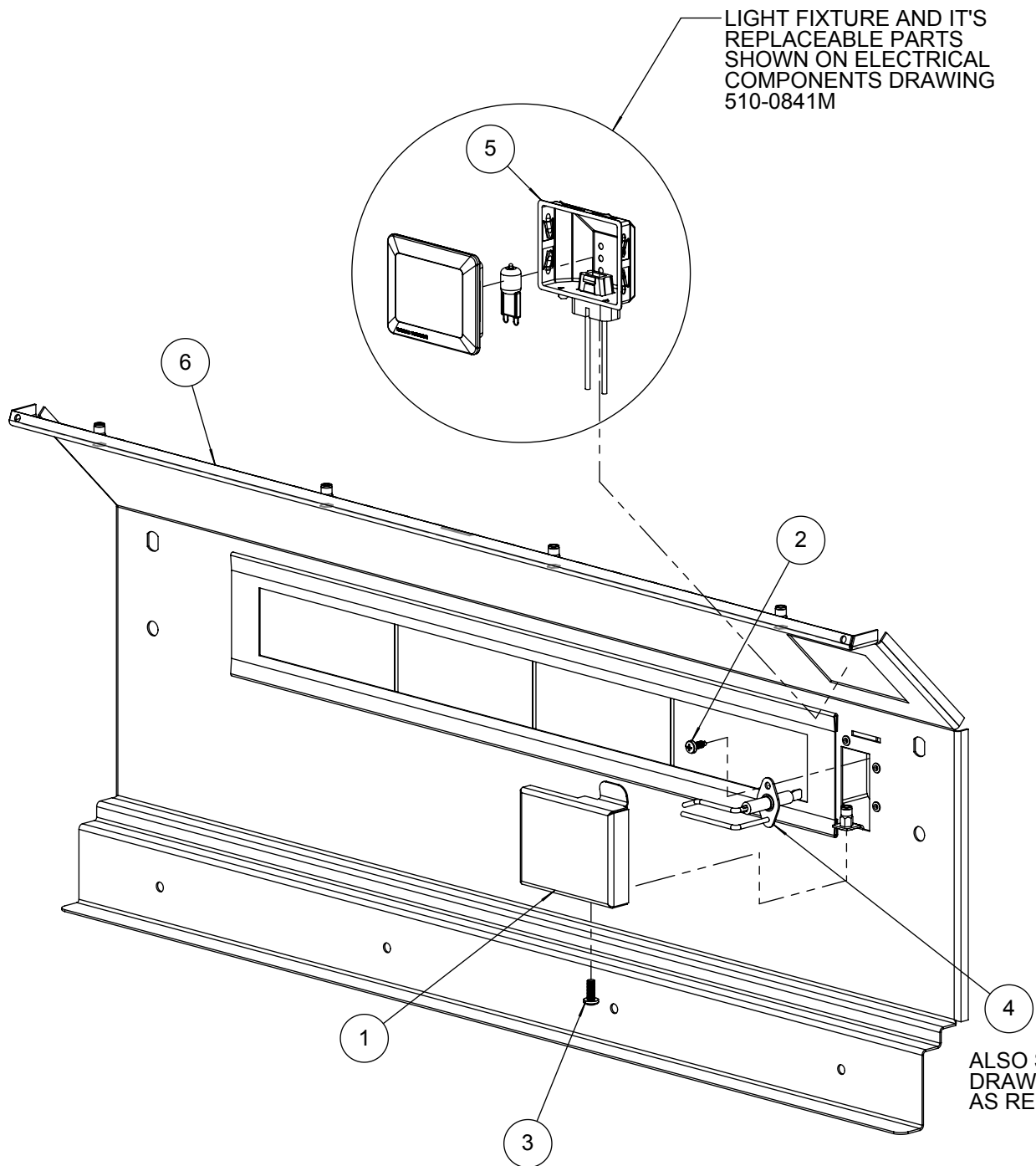
DRAWING TITLE:
ART-ROT32 ROTISSERIE KIT

DRAWING NO.:
510-055

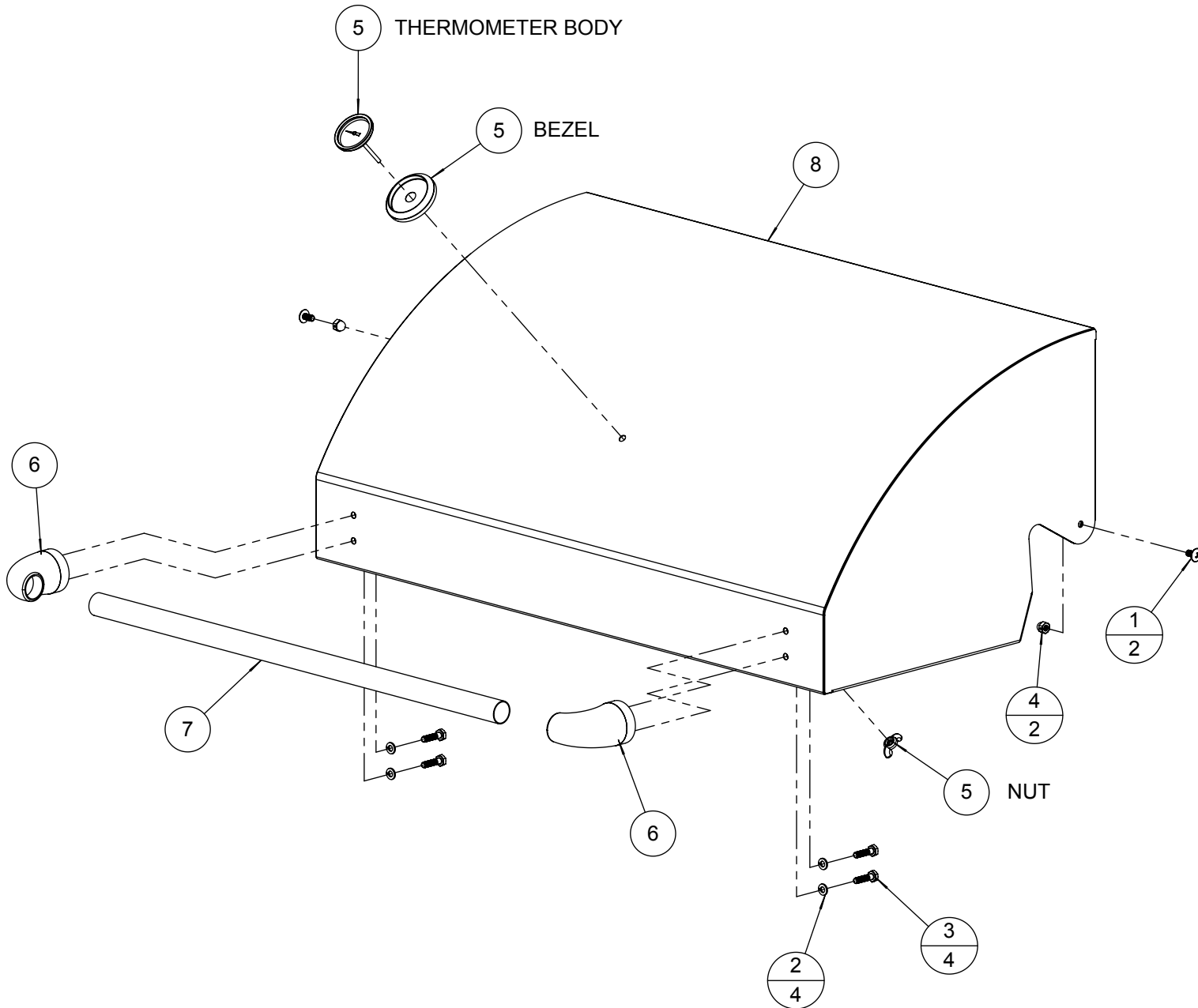
SHEET 1 C

BILL OF MATERIAL

NO.	PART #	DESCRIPTION	QTY
1	100-2363	ART ROTISSERIE ELECTRODE COVER	1
2	200-0111	SCREW 8-18 X 1/2 - SELF TAP - 410 SS	1
3	200-0267	10-32 X 1/2 - PAN HEAD - PHILIPS SCREW	1
4	210-0240	ELECTRODE - DUAL TIP "L" SHAPE- ROTISSERIE	1
5	210-0488	LAMP FIXTURE ASSEMBLY - G9/120V/40W	1
6	510-0754	ART2-32 ROTISSERIE BURNER PANEL - WELDED PARTS	1



BILL OF MATERIAL			
NO.	PART #	DESCRIPTION	QTY
1	200-0057	SCREW 1/4-20 X 1/2 - TRUSS HEAD - PHILPS	2
2	200-0087	WASHER - 1/4" SPRING LOCK- REGULAR - SS	4
3	200-0091	HH- HD - 1/4-20 x 1 x .75 THREAD	4
4	200-0313	NUT 1/4 x 20 - ACORN - SELF LOCKING	2
5	210-0490	ARTISAN THERMOMETER ASSEMBLY	1
6	290-0063	HANDLE - END CAP ASSEMBLY	2
7	290-0316	ARTISAN 32" BBQ - FRONT HOOD HANDLE BAR	1
8	510-0755	ART2-32 FRONT HOOD - WELDED PARTS	1



A	ITEM NUMBER
B	QUANTITY

Artisan
 SUPERIOR EQUIPMENT SOLUTIONS
 7039 EAST SLAUSON AVENUE
 COMMERCE, CA. 90040

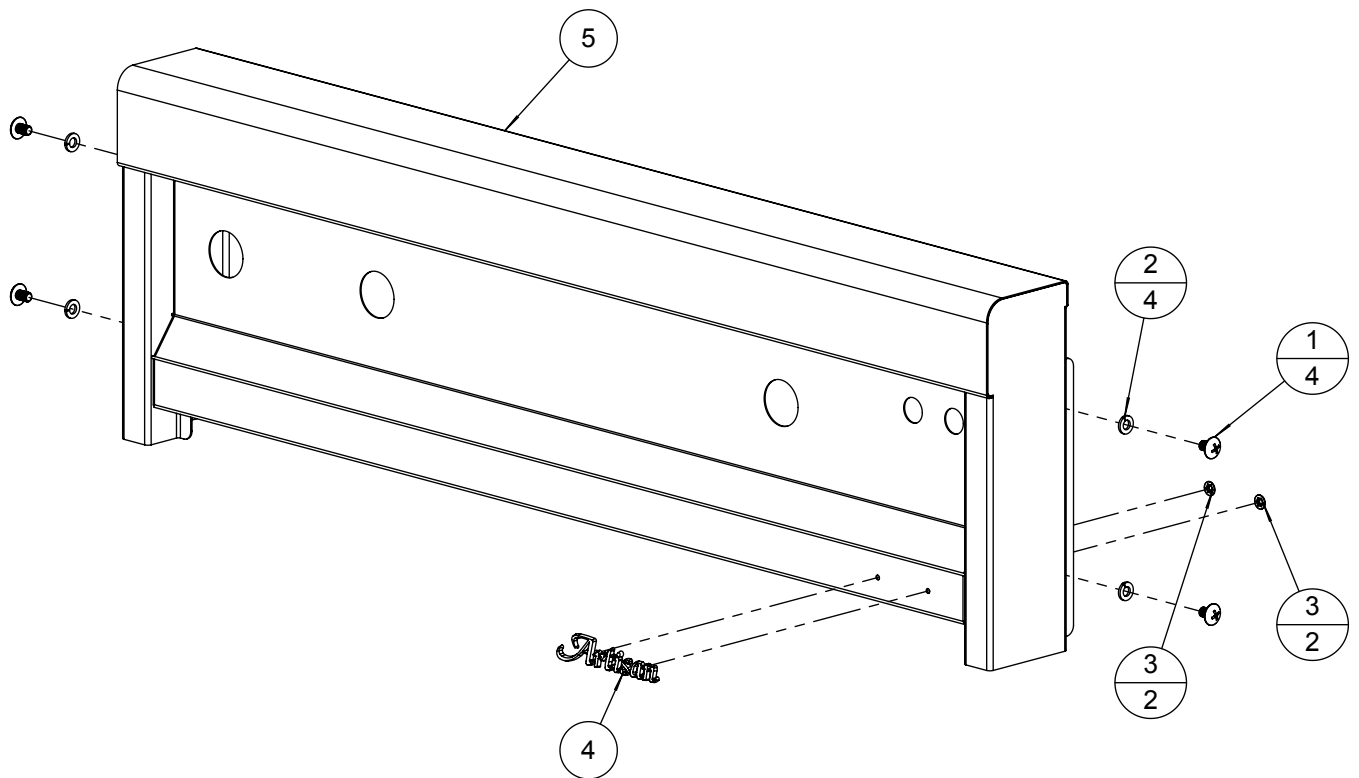
THE INFORMATION CONTAINED IN THIS DRAWING IS THE SOLE PROPERTY OF SUPERIOR EQUIPMENT SOLUTIONS INC. ANY REPRODUCTION IN PART OR AS A WHOLE WITHOUT WRITTEN PERMISSION FROM SUPERIOR EQUIPMENT SOLUTIONS, INC. IS PROHIBITED.
DRAWN BY: ADRIAN CRISCI
CREATED: 3/5/2014 5:09:16 PM

PROJECT TITLE:
ART2 GRILLS
DRAWING TITLE:
ART2-32 - FRONT HOOD ASSEMBLY

DRAWING NO.:
510-075
SHEET 1 OF 1

BILL OF MATERIAL

NO.	PART #	DESCRIPTION	QTY
1	200-0086	1/4-20 X 3/8 - TRUSS HEAD - PHILIPS SCREW	4
2	200-0087	WASHER - 1/4" SPRING LOCK- REGULAR - SS	4
3	200-0093	WASHER - PUSH LOCK 1/8" ID X 3/8" OD (LOGO)	2
4	290-0356	ARTISAN LOGO	1
5	510-0751	ART2-32 FRONT PANEL - WELDED PARTS	1



1
?

Artisan
 SUPERIOR EQUIPMENT SOLUTIONS
 7039 EAST SLAUSON AVENUE
 COMMERCE, CA. 90040

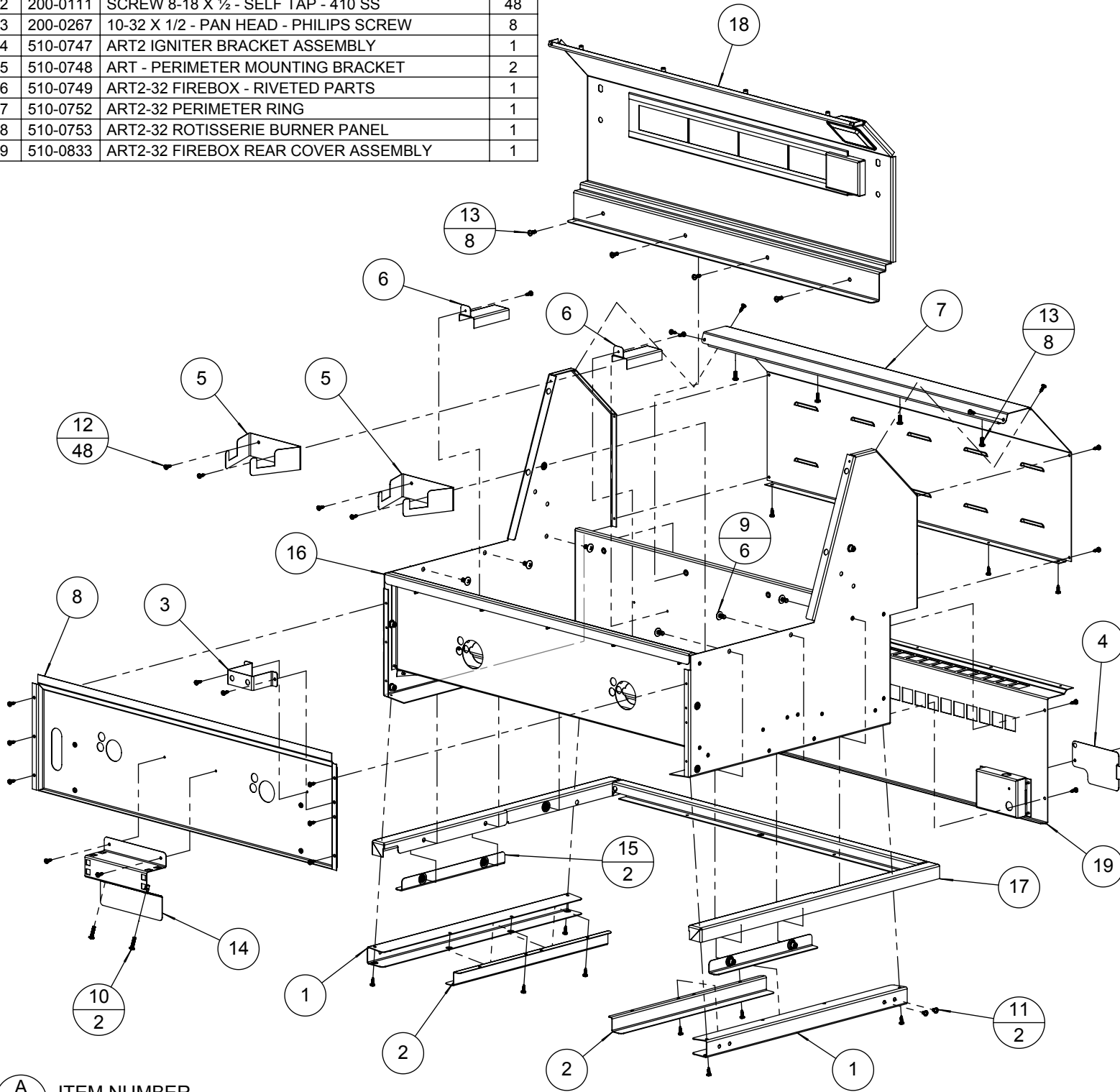
THE INFORMATION CONTAINED IN THIS DRAWING IS THE SOLE PROPERTY OF SUPERIOR EQUIPMENT SOLUTIONS INC. ANY REPRODUCTION IN PART OR AS A WHOLE WITHOUT WRITTEN PERMISSION FROM SUPERIOR EQUIPMENT SOLUTIONS, INC. IS PROHIBITED.
DRAWN BY: ADRIAN CRISCI
CREATED: 3/13/2014 4:26:52 PM

PROJECT TITLE:
ART2 GRILLS
DRAWING TITLE:
ARTS-32 FRONT PANEL ASSEMBLY

DRAWING NO.:
510-083
SHEET 1 C

BILL OF MATERIAL

NO.	PART #	DESCRIPTION	QTY
1	100-2024	FIREBOX TRAY SLIDE PART-A	2
2	100-2025	FIREBOX TRAY SLIDE PART-B	2
3	100-2038	ARTISAN IGNITER & LIGHT SWITCH BRACKET	1
4	100-2370	ART2 - ELECTRICAL BOX COVER	1
5	100-2373	ART - BURNER BRACKET	2
6	100-2374	ART - IGNITER COVER - STANDARD	2
7	100-2398	ART2-32 BACK HOOD - REAR COVER	1
8	100-2401	ART2-32 FIREWALL	1
9	200-0057	SCREW 1/4-20 X 1/2 - TRUSS HEAD - PHILIPS	6
10	200-0062	10-32 X 3/4 - PAN HEAD - PHILIPS SCREW	2
11	200-0082	10-32 X 1/4 - PAN HEAD - PHILIPS SCREW	2
12	200-0111	SCREW 8-18 X 1/2 - SELF TAP - 410 SS	48
13	200-0267	10-32 X 1/2 - PAN HEAD - PHILIPS SCREW	8
14	510-0747	ART2 IGNITER BRACKET ASSEMBLY	1
15	510-0748	ART - PERIMETER MOUNTING BRACKET	2
16	510-0749	ART2-32 FIREBOX - RIVETED PARTS	1
17	510-0752	ART2-32 PERIMETER RING	1
18	510-0753	ART2-32 ROTISSERIE BURNER PANEL	1
19	510-0833	ART2-32 FIREBOX REAR COVER ASSEMBLY	1



A ITEM NUMBER
B QUANTITY

Artisan
SUPERIOR EQUIPMENT SOLUTIONS
7039 EAST SLAUSON AVENUE
COMMERCE, CA. 90040

THE INFORMATION CONTAINED IN THIS DRAWING IS THE SOLE PROPERTY OF SUPERIOR EQUIPMENT SOLUTIONS INC. ANY REPRODUCTION IN PART OR AS A WHOLE WITHOUT WRITTEN PERMISSION FROM SUPERIOR EQUIPMENT SOLUTIONS, INC. IS PROHIBITED.
DRAWN BY: ADRIAN CRISCI
CREATED: 3/7/2014 2:51:45 PM

PROJECT TITLE:
ART2 GRILLS
DRAWING TITLE:
ART2-32 BBQ MAIN BODY ASSEMBLY

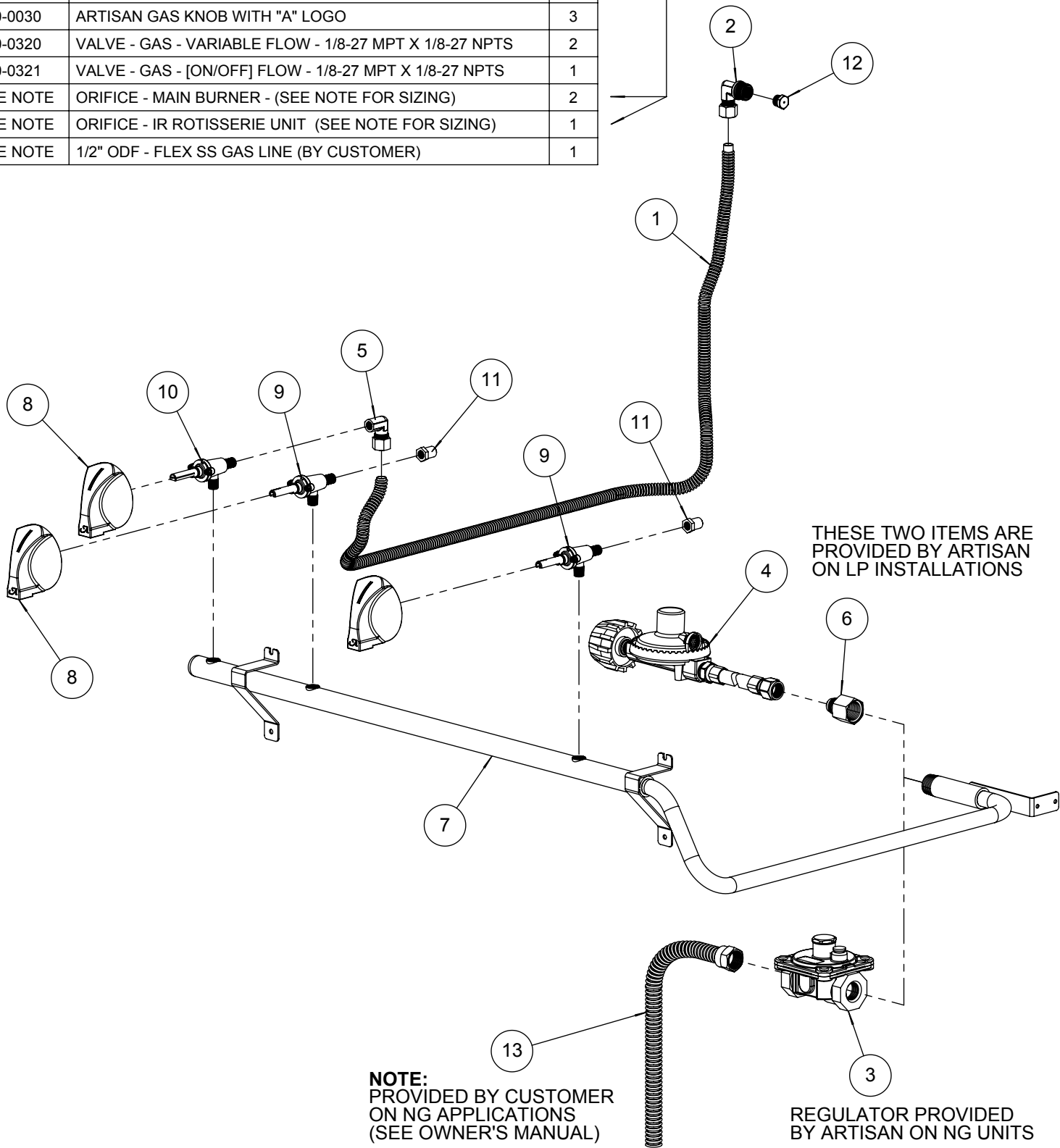
DRAWING NO.:
510-083
SHEET 1 C

BILL OF MATERIAL

NO.	PART #	DESCRIPTION	QTY
1	100-1949	ARTISAN ROTISSERIE LINE - 36" L x 3/8" ID	1
2	220-0276	ELBOW .375 MPT x .375 COMP	1
3	220-0280	REGULATOR GAS - MAXITROL RV48CL440002	1
4	220-0301	REGULATOR - LP GAS W/36" HOSE - CONN. GREEN	1
5	220-0399	ELBOW 1/8-27 FPT x 3/8" Ø COMPRESSION	1
6	220-0403	NIPPLE 3/8" OD FL x 1/2" FPT (FOR LP HOOK-UP)	1
7	220-0432	GAS MANIFOLD - ART2-32 / AAE-32	1
8	290-0030	ARTISAN GAS KNOB WITH "A" LOGO	3
9	290-0320	VALVE - GAS - VARIABLE FLOW - 1/8-27 MPT X 1/8-27 NPTS	2
10	290-0321	VALVE - GAS - [ON/OFF] FLOW - 1/8-27 MPT X 1/8-27 NPTS	1
11	SEE NOTE	ORIFICE - MAIN BURNER - (SEE NOTE FOR SIZING)	2
12	SEE NOTE	ORIFICE - IR ROTISSERIE UNIT (SEE NOTE FOR SIZING)	1
13	SEE NOTE	1/2" ODF - FLEX SS GAS LINE (BY CUSTOMER)	1

NOTE: ORIFICE OR VALVE ASSEMBLY TO CHANGE ACCORDING TO FUEL SUPPLY: NATURAL GAS OR LIQUID PROPANE

ITEM	NG GAS	LP GAS
	PART #	PART #
11	220-0436	220-0437
12	220-0283	220-0284



THESE TWO ITEMS ARE PROVIDED BY ARTISAN ON LP INSTALLATIONS

NOTE:
PROVIDED BY CUSTOMER ON NG APPLICATIONS (SEE OWNER'S MANUAL)

REGULATOR PROVIDED BY ARTISAN ON NG UNITS



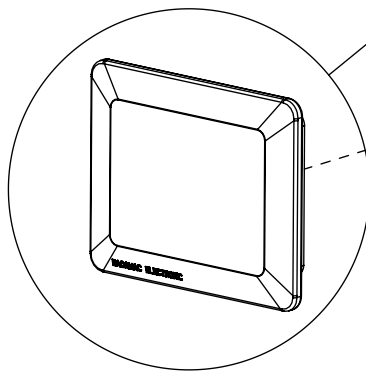
THE INFORMATION CONTAINED IN THIS DRAWING IS THE SOLE PROPERTY OF SUPERIOR EQUIPMENT SOLUTIONS INC. ANY REPRODUCTION IN PART OR AS A WHOLE WITHOUT WRITTEN PERMISSION FROM SUPERIOR EQUIPMENT SOLUTIONS, INC. IS PROHIBITED.
DRAWN BY: ADRIAN CRISCI
CREATED: 3/13/2014 2:08:11 PM

PROJECT TITLE:
ART2 GRILLS
DRAWING TITLE:
ART2-32 GAS MANIFOLD - SEE PARTS DRAWING

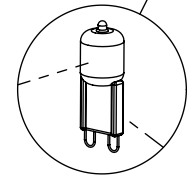
DRAWING NO.: 510-084
SHEET 1 OF 1

BILL OF MATERIAL

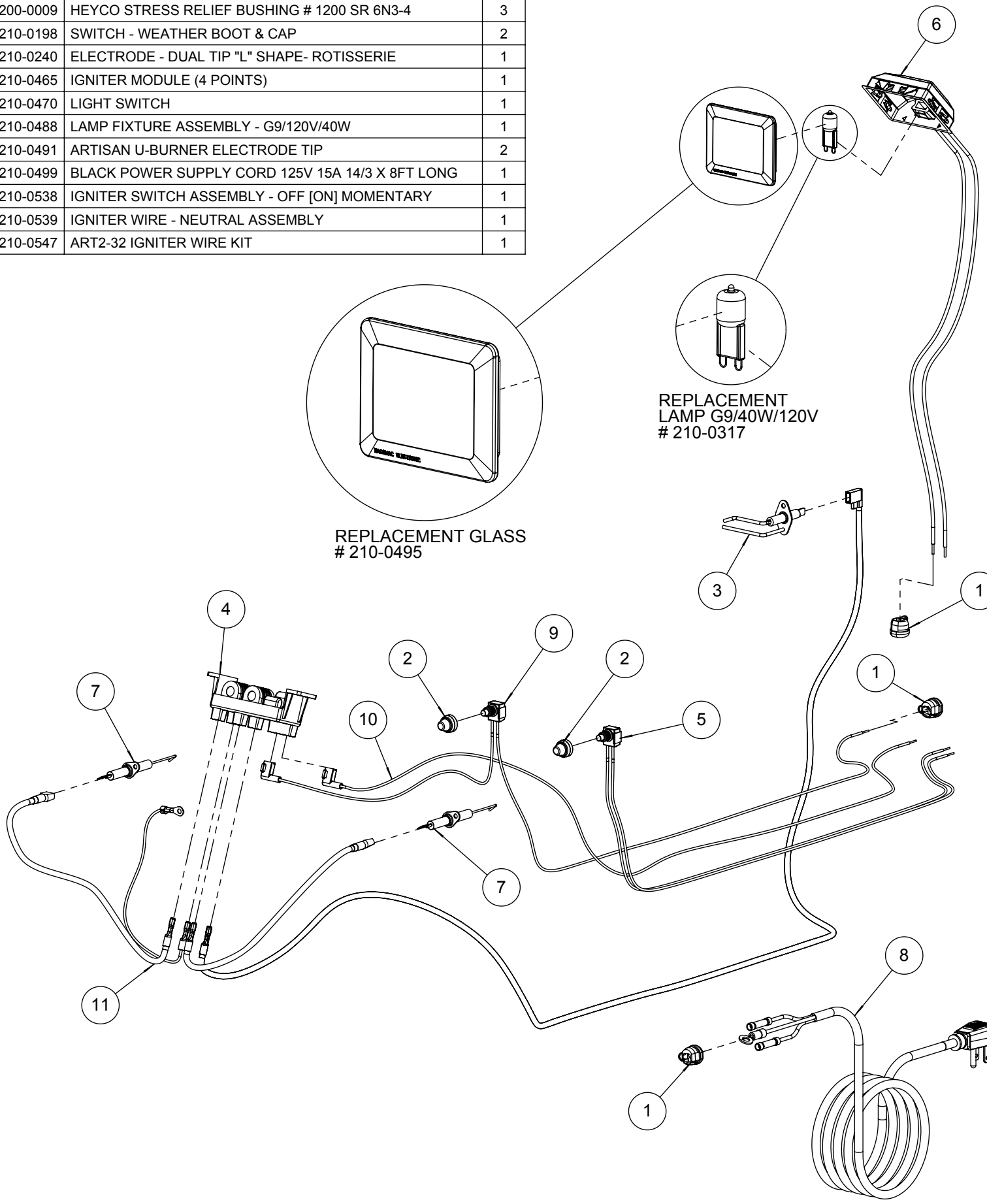
NO.	PART #	DESCRIPTION	QTY
1	200-0009	HEYCO STRESS RELIEF BUSHING # 1200 SR 6N3-4	3
2	210-0198	SWITCH - WEATHER BOOT & CAP	2
3	210-0240	ELECTRODE - DUAL TIP "L" SHAPE- ROTISSERIE	1
4	210-0465	IGNITER MODULE (4 POINTS)	1
5	210-0470	LIGHT SWITCH	1
6	210-0488	LAMP FIXTURE ASSEMBLY - G9/120V/40W	1
7	210-0491	ARTISAN U-BURNER ELECTRODE TIP	2
8	210-0499	BLACK POWER SUPPLY CORD 125V 15A 14/3 X 8FT LONG	1
9	210-0538	IGNITER SWITCH ASSEMBLY - OFF [ON] MOMENTARY	1
10	210-0539	IGNITER WIRE - NEUTRAL ASSEMBLY	1
11	210-0547	ART2-32 IGNITER WIRE KIT	1



REPLACEMENT GLASS # 210-0495



REPLACEMENT LAMP G9/40W/120V # 210-0317



Artisan
 SUPERIOR EQUIPMENT SOLUTIONS
 7039 EAST SLAUSON AVENUE
 COMMERCE, CA. 90040

THE INFORMATION CONTAINED IN THIS DRAWING IS THE SOLE PROPERTY OF SUPERIOR EQUIPMENT SOLUTIONS INC. ANY REPRODUCTION IN PART OR AS A WHOLE WITHOUT WRITTEN PERMISSION FROM SUPERIOR EQUIPMENT SOLUTIONS, INC. IS PROHIBITED.
DRAWN BY: ADRIAN CRISCI
CREATED: 3/12/2014 1:51:11 PM

PROJECT TITLE:
ART2 GRILLS
DRAWING TITLE:
ART2-32 ELECTRICAL COMPONENTS

DRAWING NO.:
510-084
SHEET 1 C