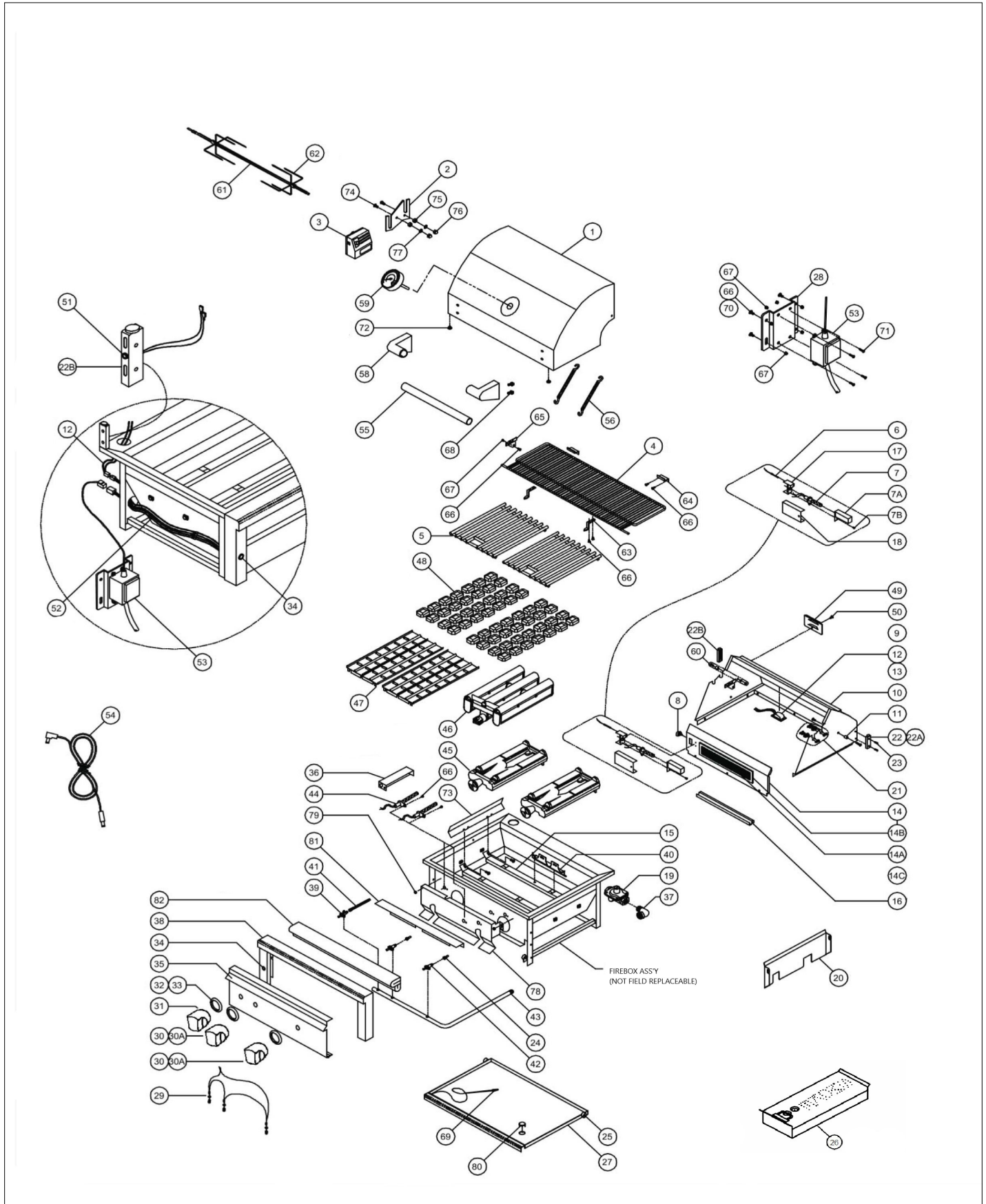


VQGI5361

36" Built-In Grill W/Prosear Burner & Rotisserie

VQGI5361 Part Breakdown	1
Appendix A:Pages Index	A
Appendix B:Parts Index	B

VQGI5361 Part Breakdown





Item	Part No.	Name	Qty	Uom	NOTES
1	061954-000	FRONT HOOD ASSY, 36"	1	EA	
2	061996-000	MOTOR MOUNTING BRACKET KIT, ALL PRO	1	EA	
3	061992-000	MOTOR ASSY, HEAVY DUTY 3 SPEED	1	EA	
4	061812-000	WARMING SHELF, PRO 36"	1	EA	
5	061774-000	GRATE- 16 1/2" X 18 1/2"	2	EA	
6	061778-000	IR THERMOCOUPLE	1	EA	
7	061867-000	IR ELECTRODE, HOT SURFACE (SEE ALSO #73)	1	EA	
7A	061871-000	GAS COLLECTOR BOX, IR ROTIS	1	EA	
7B	061769-000	SCREW, #6-32 x 1/4 PH. PAN HD	3	EA	
8	061805-000	IR BRASS ELBOW, 7/16-20 MALE THREAD	1	EA	
9	061832-000	LIGHT PANEL FOR DUAL LIGHTS, 36"	1	EA	
10	061946-000	REAR HOOD ASSY, PRO 36"	1	EA	
11	062428-000	HOOD SPACER, UNIVERSAL	2	EA	
12	061965-000	HOOD LIGHT ASSY, DUAL W/10W BULB	1	EA	
13	061810-000	BULB, REPLACEMENT, 10W HALOGEN	1	EA	
Not Shown	061827-000	GLASS REPLACEMENT COVER W/CLIP	1	EA	
14	061950-000	IR PANEL ASSY, 36" (INCLUDES BURNER)	1	EA	
14A	061861-000	IR ROTIS. BURNER ONLY (MEDIUM-21 IN.)	1	EA	
14B	061863-000	IR BURNER FRAME ONLY (MEDIUM-21 IN.)	1	EA	
14C	061853-000	SCREW, #8-32 X 5/16 PH. FLAT HD	2	EA	
15	061826-000	BURNER HANGER, PRO 36"	1	EA	
16	061749-000	WOODCHIP TRAY (36", 42")	1	EA	
17	061869-000	IR IGNITER BRACKET, PRO	1	EA	
18	061877-000	IR IGNITER COVER (36", 42", 54")	1	EA	

Item	Part No.	Name	Qty	Uom	NOTES
19	061789-000	REGULATOR 4/11 N/G ONLY (CAN CONVERT TO LP FOR BULK PROPANE USE)	1	EA	
Not Shown	061759-000	REGULATOR W/30" HOSE DOUBLE STAGE-LP	1	EA	
20	061901-000	FIRBOX PARTITION, PROSEAR 36"	1	EA	
21	061994-000	ROLLER BEARING KIT- ROTISSERIE (2 PARTS EA)	1	EA	
22	061834-000	HOOD STOP, RIGHT, ALL PRO	1	EA	
22A	061836-000	BUMPER FOR HOOD STOP, .750 DIA	2	EA	
22B	061883-000	HOOD STOP, LEFT, ALL PRO	1	EA	
23	061835-000	SCREW/HOOD STOP- #8-32 x 1" PH TRUSS HD	4	EA	
24	062010-000	COMPLETE ORIFICE FIELD KIT- LP TO NG	1	EA	
Not Shown	062009-000	COMPLETE ORIFICE FIELD KIT- NG TO LP	1	EA	
Not Shown	061753-000	ORIFICE, BURNER, NG (#41 SHORT)	2	EA	
Not Shown	061756-000	ORIFICE, BURNER, LP (#53 SHORT)	2	EA	
Not Shown	061754-000	ORIFICE, BURNER, NG (#44 SHORT) PROSEAR	1	EA	
Not Shown	061757-000	ORIFICE, BURNER, LP (#54 SHORT) PROSEAR	1	EA	
Not Shown	061755-000	ORIFICE, IR ROTIS., NG (#50 SHORT)	1	EA	
Not Shown	061758-000	ORIFICE, IR ROTIS., LP (#57 SHORT)	1	EA	
25	061995-000	ROLLER BEARING KIT- DRIP PAN (2 PARTS EA)	1	EA	
26	065717-000	SMOKER BOX	1	EA	
27	062024-000	DRIP PAN, PRO 36"	1	EA	
28	061875-000	TRANSFORMER MOUNTING BRKT B/I & F/S	1	EA	
29	061961-000	LED HARNESS ASSY, 36"/42"	1	EA	
Not Shown	061841-000	LED HOLDER	3	EA	
30	061916-000	KNOB, BURNER, STAINLESS	1	EA	
30A	061918-000	KNOB, PROSEAR, STAINLESS	1	EA	

Item	Part No.	Name	Qty	Uom	NOTES
31	061917-000	KNOB, ROTIS, STAINLESS	1	EA	
32	050172-000	BEZEL, KNOB	3	EA	
33	061904-000	BEZEL SCREW, #6-32 x 1/8 PH PAN	6	EA	
34	061878-000	LIGHT SWITCH + HARNESS, BLUE LIGHTED	1	EA	
35	061974-000	FRONT PANEL, PRO 36"	1	EA	
36	061868-000	GAS COLLECTOR BOX, H-BURNER	1	EA	
37	061752-000	ELBOW, STREET, 1/2" 90 DEGREE-NG ONLY	1	EA	
Not Shown	061760-000	ELBOW, 3/8" FLARE TO 1/2" FIP-LP ONLY	1	EA	
38	061966-000	BULLNOSE ASSY, PRO 36"	1	EA	
39	061802-000	IR BURNER VALVE W/ MICROSWITCH	1	EA	
40	061903-000	BURNER SUPPORT, PROSEAR-2 36	1	EA	
41	061804-000	FLEX HOSE, 9MM X 38" W/ 7/16 FITTINGS	1	EA	
42	061881-000	MAIN BURNER VALVE W/MICROSWITCH	2	EA	
Not Shown	061859-000	MICROSWITCH REPLACEMENT FOR VALVE (MAIN VALVE AND IR BURNER VALVE)	2	EA	
43	061940-000	MANIFOLD ASSY W/VALVES, 36" LP PROSEAR		EA	
Not Shown	061942-000	MANIFOLD ASSY W/VALVES, 36" NG PROSEAR	1	EA	
44	062002-000	COMPLETE ELECTRODE KIT, 36"/42"	1	EA	
NI	062446-000	IGNITION WIRE HARNESS, 36 & 42	1	EA	
NI	061866-000	IGNITER, LPB, LPGSE-1	1	EA	
NI	062427-000	IGNITER, ALL SEAR	2	EA	
45	061751-000	H-BURNER (BRASS)	2	EA	
46	061887-000	PROSEAR-2 BURNER, SHORT, 36"		EA	
Not Shown	061997-000	SCREEN REPLACEMENT, PROSEAR 2 BURNER, 36	1	EA	
47	061986-000	BRIQUETTE TRAY, 36"	1	EA	



Item	Part No.	Name	Qty	Uom	NOTES
Not Shown	062004-000	COMPLETE TRAY W/BRIQUETTIES & CHIPS	2	EA	
48	061993-000	BRIQUETTIES, 35 PER BOX	2	EA	
49	061785-000	IR ACCESS COVER	1	EA	
50	061763-000	SCREW, 1/4-20 X 3/8 PH TRUSS HD, S/S	12	EA	
51	061963-000	ROTISERIE JACK + INTERNAL HARNES	1	EA	
Not Shown	061874-000	JAKC ONLY, DC PANEL MOUNT	1	EA	
52	061972-000	MAIN POWER HARNES (30, 36, 42, 54)	1	EA	
53	061872-000	TRANSFORMER, 5 AMP, ALL PRO	1	EA	
54	061886-000	ROTISERIE EXTERNAL CORD	1	EA	
55	061911-000	HOOD HANDLE, 36"	1	EA	
56	061803-000	EXTENSION SPRING, 36"	2	EA	
NI	069213-000	SCREW, SHOULDER #8-32 X 3/16	2	EA	
Not Shown	NOTE	(TO SECURE SPRING TO UNIT)		EA	
NI	061771-000	LOCK NUT, #8-32, S/S	2	EA	
Not Shown	NOTE	(TO SECURE SPRING TO UNIT)		EA	
58	026965-000	END CAP, ASM, DOOR HANDLE	2	EA	
59	061889-000	HOOD THERMOMETER, SEALED	1	EA	
Not Shown	061890-000	WASHER FOR HOOD THERMOMETER	1	EA	
60	061764-000	PIVOT SCREW, 1/4-20 X 1" HEX DRIVE	2	EA	
Not Shown	061762-000	PIVOT SCREW NUT, HEX, 1/4- 20 S/S	2	EA	
Not Shown	061772-000	PIVOT WASHER, SPLIT LOCK, 1/4 S/S	6	EA	
61	061816-000	SPIT ROD, PRO 36"	1	EA	
62	061799-000	SPIT FORK, HEAVY DUTY, ALL SIZES	2	EA	
63	061865-000	FRONT RETAINING BKT., WARMING RACK	2	EA	



Item	Part No.	Name	Qty	Uom	NOTES
64	061819-000	REAR RETAINING BRACKET, WARMING RACK	2	EA	
65	061891-000	LEFT RETAINING BRACKET, WARMING RACK	1	EA	
66	061765-000	SCREW #8-32 X 3/8 PH TRUSS HEAD S/S	4	EA	
67	061771-000	LOCK NUT, #8-32, S/S	4	EA	
68	061808-000	BOLT, HEX HEAD, 1/4-20 X 3/8", S/S	18	EA	
69	061791-000	ALTERNATE LIGHTING DEVICE, MATCH HOLDER	1	EA	
70	061790-000	SCREW, #8 X 1/2 PH TRUSS HD TYPE 'A'	1	EA	
71	061800-000	SCREW, #8-32 X 5/8 PH. PAN HD, S/S	4	EA	
72	061837-000	HOOD BUMPER, .500 DIA	2	EA	
73	061902-000	BRIQUETTE DIVIDER, 36"	1	EA	
74	061773-000	SCREW, #10-24 X 3/4 PH FLAT HD S/S	6	EA	
75	061860-000	ROTIS. SPACER	2	EA	
76	061822-000	NUT, ACORN, #10-24, S/S	2	EA	
77	061823-000	WASHER, #10 SPLIT LOCK, S/S	2	EA	
78	061893-000	HEAT SHIELD, PROSEAR 36"	1	EA	
79	061770-000	NUT, COMBINATION (FOR HEAT SHIELD)	2	EA	
80	061858-000	DRAIN PLUG, DRIP PAN	1	EA	
81	061907-000	RETAINER, INSULATION	1	EA	
82	062821-000	INSULATION, 36"	1	EA	
NI	064804-000	WINDSCREEN 36"	1	EA	
NI	064807-000	WIND BAFFLE 36"	1	EA	
NI	VIJ5361	36" INSULATED JACKET	1	EA	



Appendix A:Pages Index

VQGI5361 Part Breakdown 1



Appendix B:Parts Index

026965-000	1	061823-000	1
050172-000	1	061826-000	1
061749-000	1	061827-000	1
061751-000	1	061832-000	1
061752-000	1	061834-000	1
061753-000	1	061835-000	1
061754-000	1	061836-000	1
061755-000	1	061837-000	1
061756-000	1	061841-000	1
061757-000	1	061853-000	1
061758-000	1	061858-000	1
061759-000	1	061859-000	1
061760-000	1	061860-000	1
061762-000	1	061861-000	1
061763-000	1	061863-000	1
061764-000	1	061865-000	1
061765-000	1	061866-000	1
061769-000	1	061867-000	1
061770-000	1	061868-000	1
061771-000	1, 1	061869-000	1
061772-000	1	061871-000	1
061773-000	1	061872-000	1
061774-000	1	061874-000	1
061778-000	1	061875-000	1
061785-000	1	061877-000	1
061789-000	1	061878-000	1
061790-000	1	061881-000	1
061791-000	1	061883-000	1
061799-000	1	061886-000	1
061800-000	1	061887-000	1
061802-000	1	061889-000	1
061803-000	1	061890-000	1
061804-000	1	061891-000	1
061805-000	1	061893-000	1
061808-000	1	061901-000	1
061810-000	1	061902-000	1
061812-000	1	061903-000	1
061816-000	1	061904-000	1
061819-000	1	061907-000	1
061822-000	1	061911-000	1
		061916-000	1



061917-000	1
061918-000	1
061940-000	1
061942-000	1
061946-000	1
061950-000	1
061954-000	1
061961-000	1
061963-000	1
061965-000	1
061966-000	1
061972-000	1
061974-000	1
061986-000	1
061992-000	1
061993-000	1
061994-000	1
061995-000	1
061996-000	1
061997-000	1
062002-000	1
062004-000	1
062009-000	1
062010-000	1
062024-000	1
062427-000	1
062428-000	1
062446-000	1
062821-000	1
064804-000	1
064807-000	1
065717-000	1
069213-000	1
VIJ5361	1