

This Owner's Manual is provided and hosted by [Appliance Factory Parts](http://www.appliancefactoryparts.com).



Alfresco AXESB-2 Owner's Manual

[Shop genuine replacement parts for Alfresco AXESB-2](#)



[Find Your Alfresco Grill Parts - Select From 126 Models](#)

----- Manual continues below -----

Alfresco™



AXESB-2 SIDE BURNER PARTS MANUAL (SN° 18-00000 & FORWARD)

Alfresco
SUPERIOR EQUIPMENT SOLUTIONS
1085 BIXBY DRIVE
CITY OF INDUSTRY, CA. 91745

THE INFORMATION CONTAINED IN THIS DRAWING IS THE SOLE PROPERTY OF SUPERIOR EQUIPMENT SOLUTIONS INC. ANY REPRODUCTION IN PART OR AS A WHOLE WITHOUT WRITTEN PERMISSION FROM SUPERIOR EQUIPMENT SOLUTIONS, INC. IS PROHIBITED.

DRAWN BY: ADRIAN CRISCI
CREATED: 9/13/2018 3:09:22 PM

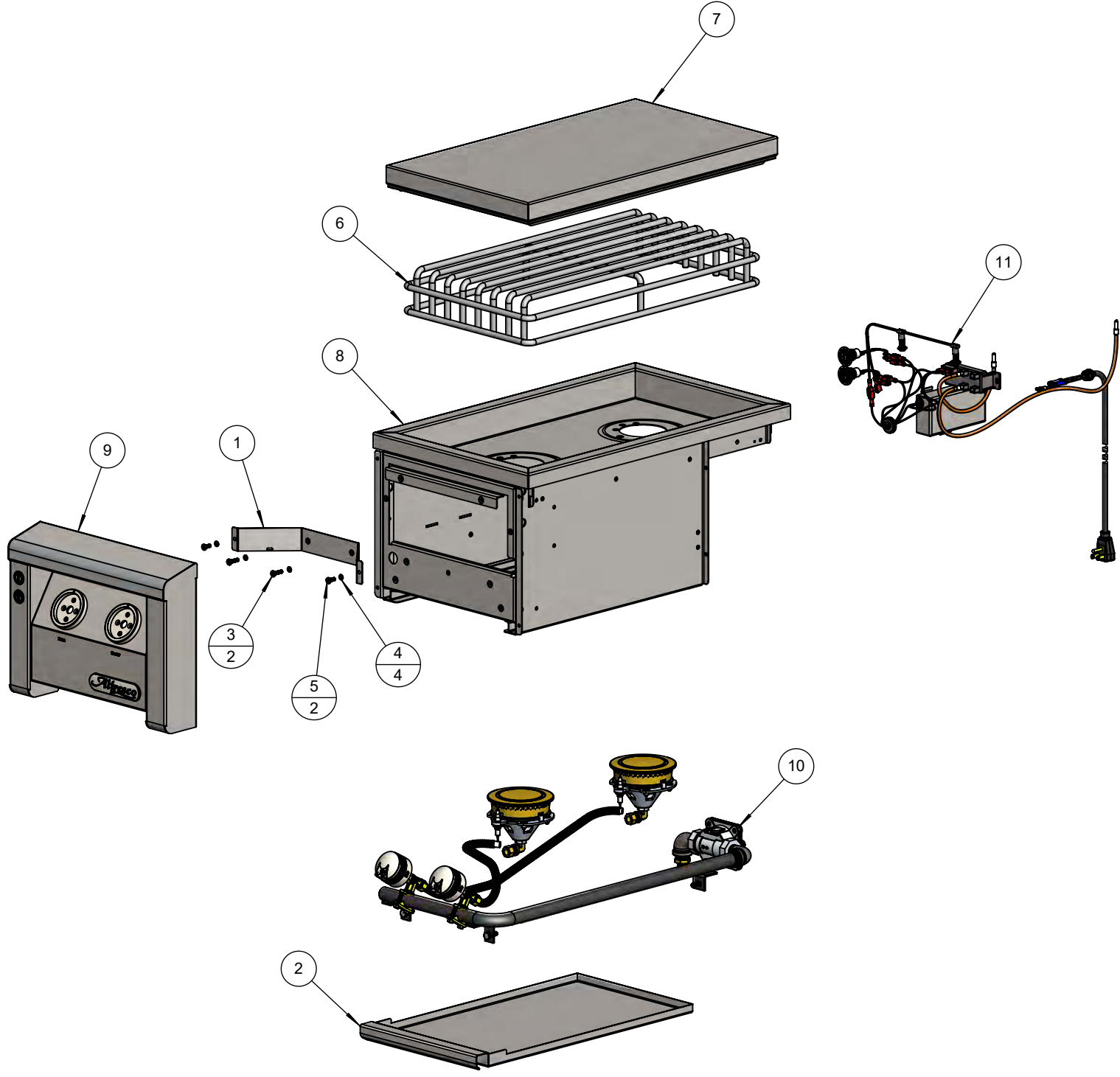
PROJECT TITLE:
PART MANUALS

DRAWING TITLE:
AXESB-2 SIDE BURNER PARTS MANUAL

DRAWING NO.: 500-0214 MANU
SHEET 1 OF 1

BILL OF MATERIAL

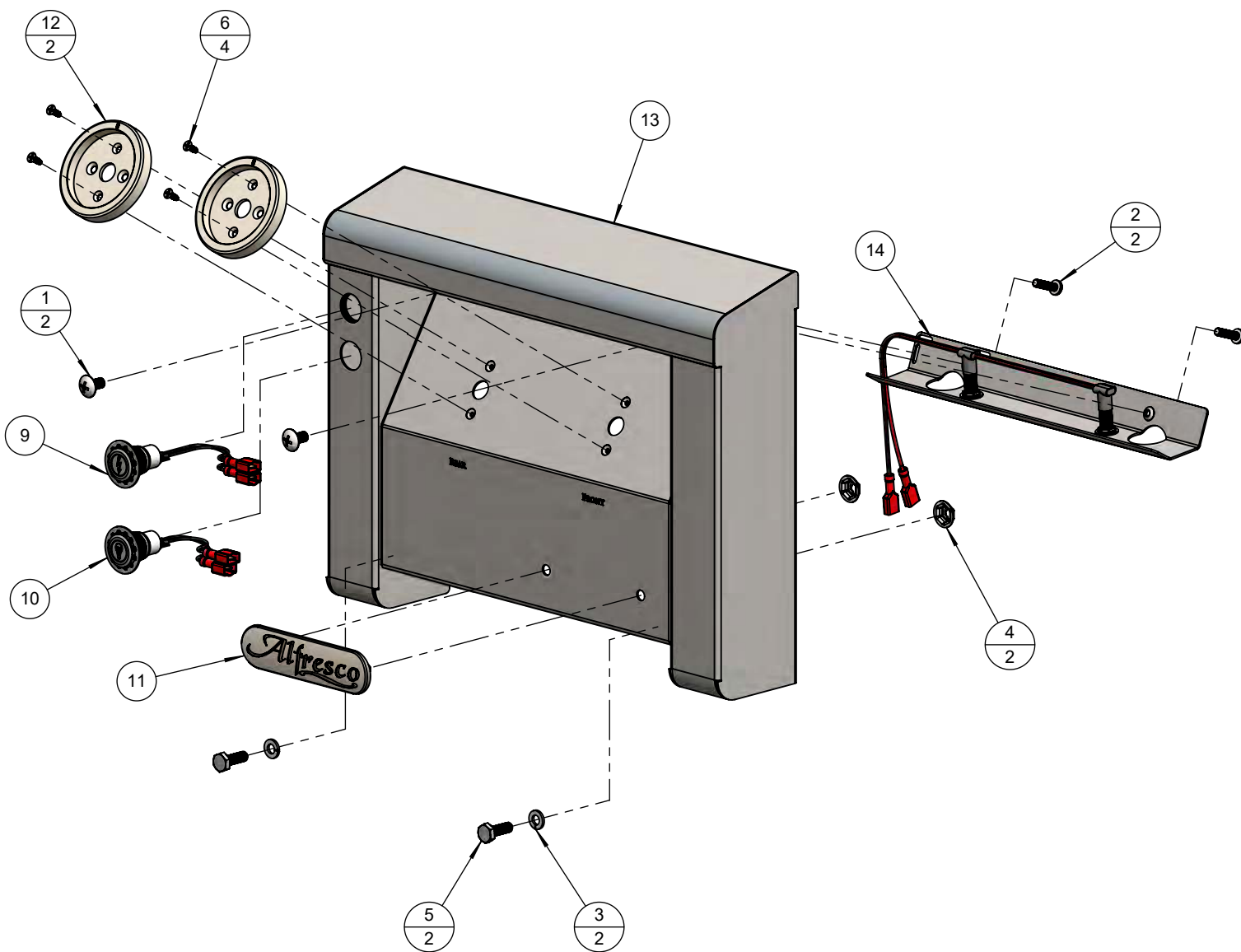
NO.	PART #	DESCRIPTION	QTY
1	100-2970	IGNITER MODULE BRACKET	1
2	100-2972	GREASE TRAY	1
3	200-0062	10-32 X 3/4 - PAN HEAD - PHILLIPS SCREW	2
4	200-0075	# 10 LOCK WASHER	4
5	200-0267	10-32 X 1/2 - PAN HEAD - PHILLIPS SCREW	2
6	290-0069	GRATE - DUAL SIDE BURNER	1
7	510-0532	COVER ASSEMBLY	1
8	510-1138	MAIN BODY ASSEMBLY - WELDED	1
9	510-1140	FRONT PANEL MAIN ASSEMBLY	1
10	510-1248	PIPING ASSEMBLY	1
11	510-1249	ELECTRICAL ASSEMBLY	1



BILL OF MATERIAL

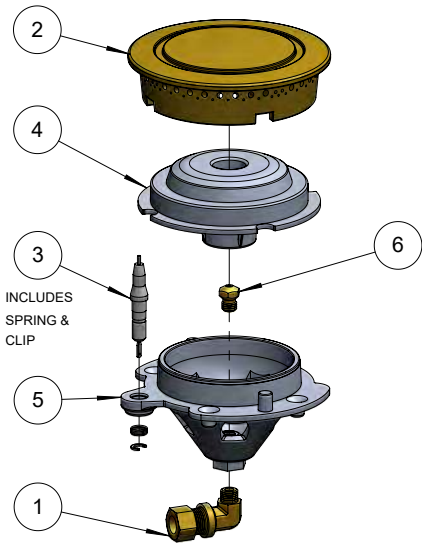
NO.	PART #	DESCRIPTION	QTY
1	200-0057	SCREW 1/4-20 X 1/2 - TRUSS HEAD - PHILLIPS	2
2	200-0062	10-32 X 3/4 - PAN HEAD - PHILLIPS SCREW	2
3	200-0087	WASHER - 1/4" SPRING LOCK- REGULAR - SS	2
4	200-0125	NUT THREAD CUTTER FOR 1/4" Ø STUD -SPEED NUT	2
5	200-0242	BOLT 1/4-20 UNC x 3/4 - HEX HEAD - SS	2
6	200-0348	SCREW 6-32 x 3/8 - THREAD CUTTER - FLAT HEAD PHILIPS	4
7	210-0581	WASHER - LOCK - Ø 19 mm - INTERNAL TEETH	1
8	210-0582	NUT - Ø 19 mm X 1	1
9	210-0583	SWITCH - IGNITION - MOMENTARY [ON]/OFF	1
10	210-0584	SWITCH - LIGHT - LATCHING [ON/OFF]	1
11	290-0377	ALFRESCO RANGE LOGO	1
12	290-0388	ALFRESCO RANGE KNOB - BEZEL RING	2
13	510-1141	FRONT PANEL WELDED / RIVETED PARTS	1
14	510-1142	LIGHT ASSEMBLY	1

NOTE: SWITCHES (9) AND (10) AS WELL AS LIGHT ASSEMBLY (14) SHOWN AS REFERENCE. FOR ELECTRICAL COMPONENTS SEE DRAWING 510-1249 M1



BILL OF MATERIAL

NO.	PART #	DESCRIPTION	QTY
1	220-0293	ELBOW .125 FPT x .375 COMP (SIDE BURNER)	1
2	290-0072	SIDE BURNER - EXTERIOR CAP	1
3	290-0074	ELECTRODE ASSEMBLY	1
4	290-0222	SIDE BURNER - INNER CAP	1
5	290-0344	SIDE BURNER BODY	1
6	SEE NOTE	SIDE BURNER ORIFICE ► SEE NOTE	1

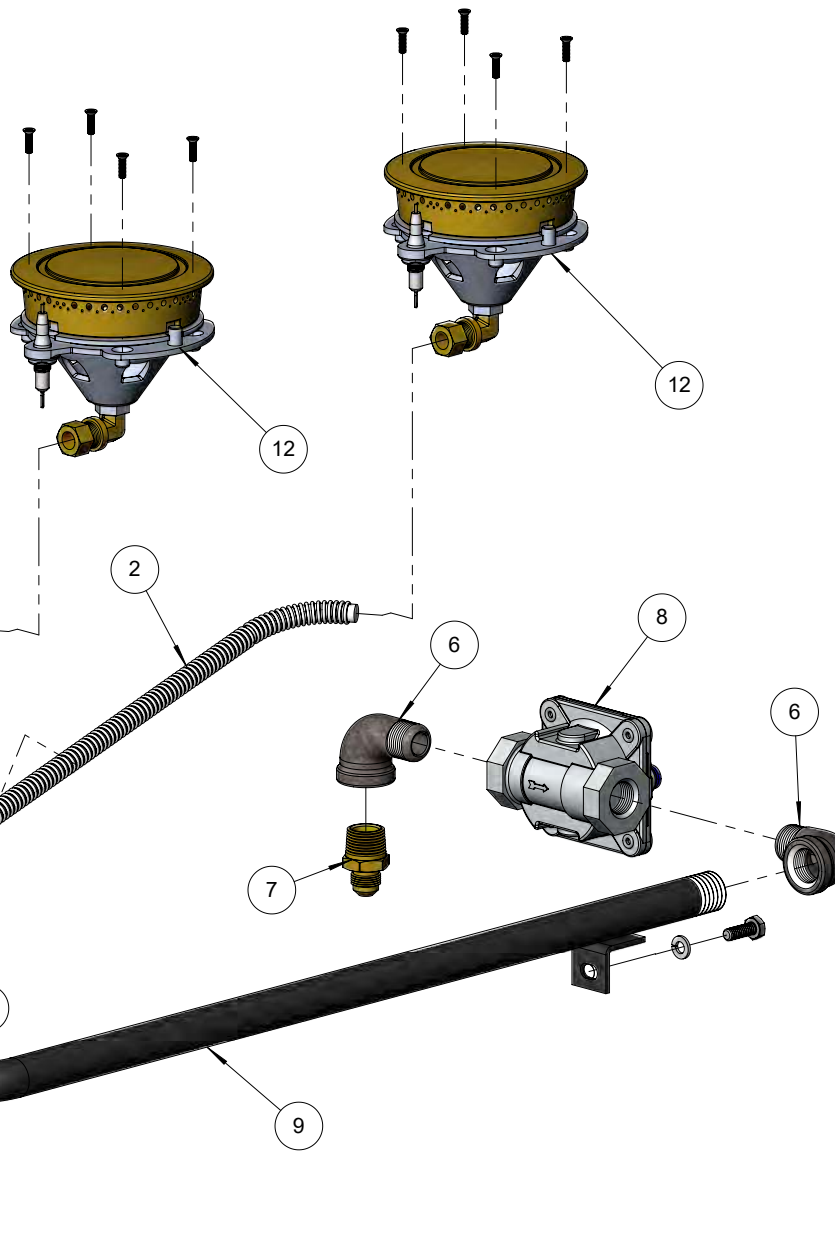


NOTE: ORIFICES

NG	220-0368
LP	220-0369

BILL OF MATERIAL

NO.	PART #	DESCRIPTION	QTY
1	100-0917	GAS LINE - 8"L X 3/8"Ø FLEX TUBE	
2	100-0941	GAS LINE - 24"L x 3/8" Ø - SS. FLEX TUBE	
3	200-0087	WASHER - 1/4" SPRING LOCK- REGULAR - SS	
4	200-0098	SCREW 6-32 X 1/2" - FLAT HEAD 82° - PHILIPS	
5	200-0242	BOLT 1/4-20 UNC x 3/4 - HEX HEAD - SS	
6	200-0274	ELBOW 90°- CAST IRON - 1/2" FPT x 1/2" MPT	
7	220-0275	NIPPLE - 1/2" MPT X 3/8" OD FL	
8	220-0280	REGULATOR GAS - MAXITROL RV48CL440002	
9	220-0298	MANIFOLD - SIDE BURNER - DUAL VALVE	
10	290-0042	GAS VALVE - SIDE BURNER - WITH INTERNAL ORIFICE	
11	290-0451	KNOB - BBQ VALVE - ASSEMBLY	
12	SEE BOM	SIDE BURNER ASSEMBLY ► SEE PARTS	



THE INFORMATION CONTAINED IN THIS DRAWING IS THE SOLE PROPERTY OF SUPERIOR EQUIPMENT SOLUTIONS INC. ANY REPRODUCTION IN PART OR AS A WHOLE WITHOUT WRITTEN PERMISSION FROM SUPERIOR EQUIPMENT SOLUTIONS, INC. IS PROHIBITED.

DRAWN BY: ADRIAN CRISCI
CREATED: 9/17/2018 6:01:59 AM

PROJECT TITLE:
AXESB-2

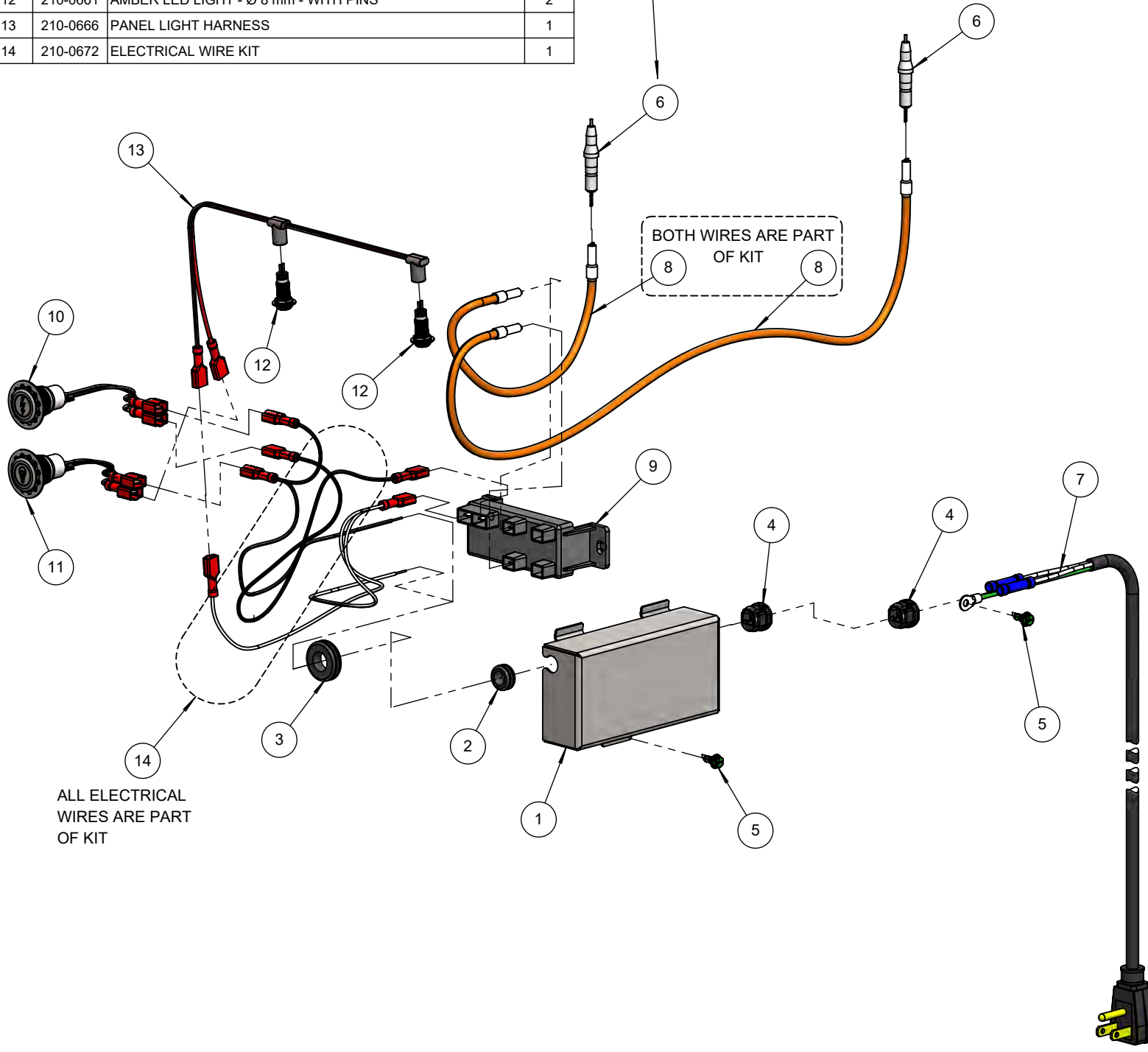
DRAWING TITLE:
PIPING ASSEMBLY

DRAWING NO.: 510-1248
SHEET 1 OF 1

BILL OF MATERIAL

NO.	PART #	DESCRIPTION	QTY
1	100-2961	ELECTRICAL J-BOX	1
2	200-0003	GROMMET 3/8" Ø - MMC# 9600K33	1
3	200-0005	GROMMET 1/2" Ø - MMC# 9600K22	1
4	200-0009	HEYCO STRESS RELIEF BUSHING # 1200 SR 6N3-4	2
5	200-0320	SCREW 8-32 x 3/8 - GROUNDING SCREW	2
6	210-0248	SIDE BURNER ELECTRODE A1202-E	2
7	210-0287	NEMA 5-15 - 90° PLUG 18/3 EXTENSION CORD	1
8	210-0309	IGNITER WIRE KIT	1
9	210-0464	IGNITER MODULE (2 POINTS)	1
10	210-0583	SWITCH - IGNITION - MOMENTARY [ON]/OFF	1
11	210-0584	SWITCH - LIGHT - LATCHING [ON/OFF]	1
12	210-0661	AMBER LED LIGHT - Ø 8 mm - WITH PINS	2
13	210-0666	PANEL LIGHT HARNESS	1
14	210-0672	ELECTRICAL WIRE KIT	1

ELECTRODES SHOWN AS REFERENCE ONLY
(PART OF PIPING DIAGRAM 510-1248 M1)



ALL ELECTRICAL WIRES ARE PART OF KIT

BOTH WIRES ARE PART OF KIT